



Country / City Spain / Valencia

University / School UPC / Escola Tècnica Superior d'Arquitectura del

Academic year Title Valles 2017-2018

of the project The territory of Horta Nord

Authors Víctor Maitino, Eneritz Egiluz Moreno, Antonia Prohammer, Anna Christina Rudolph, Amirah Sophie Tröthandl



# PERFORMATIVE NATURE

Barcelona International Landscape Architecture Biennial

September 2018 **Barcelona**

SCHOOL PRIZE

X International Landscape Architecture Biennial

Máster d'Arquitectura del Paisatge -DUOT - UPC  
ETSAB- Escola Tècnica Superior  
d'Arquitectura de Barcelona  
Avenida Diagonal, 649 piso 5  
08028 Barcelona-Spain

## TECHNICAL DOSSIER

Title of the project The territory of Horta Nord  
Authors Víctor Maitino, Eneritz Egiluz Moreno, Antonia Prohammer, Anna Chirstina Rudolph, Amirah Sophie Tröthandl  
Title of the course Cultural Landscapes  
Academic year 2018-2018  
Teaching Staff Carles Llop, Josep Maldonado, Gemma Milà, Artur Tudela  
Department/Section/Program of belonging Departament d'Urbanisme i Ordenació del Territori a l'ETSAB  
University/School UPC / Escola Tècnica Superior d'Arquitectura del Vallès

Written statement, short description of the project in English, no more than 250 words

Cultural landscapes are territories (urban and rural) with plenty of history and content that express the human action of nature transformation and unique landscape construction. When renewing territorial projects, the aim is to further the cultural value possibilities, assigning the knowledge of the landscape using local sciences. This kind of multidisciplinary approach is intended to help understand the site complexity. The landscape is a great reminder of the historical heritage while at the same time the contemporary situation of the region. These old territories, with their large heritage, lead us to explore their cultural landscape condition.

The Horta Nord of Valencia is an area filled with history and heritage shaped by the work of its society. Its irrigation system started at 8th century. These days, cultural landscapes still live on thanks to their land production and habitability. Cultural landscape has to be approached with the collaboration of people who preserve its heritage alongside concerned institutions, local citizens and those who want to sustainably develop. Also, we focus on the analysis of projects that promote the local development of territories and cities in an holistic perspective without trivializing the territory.

Accordingly, we reveal cultural landscapes through the elaboration of an Atlas with multidisciplinary knowledge. Each group explore and give a vision of the area through the analyze of a territory's layer.

The rural territories constitute socio-landscape heritage in contrast to urban transformation. This landscape heritage doesn't refer only to the past but also the future, to feed territories with food sovereignty.

For further information

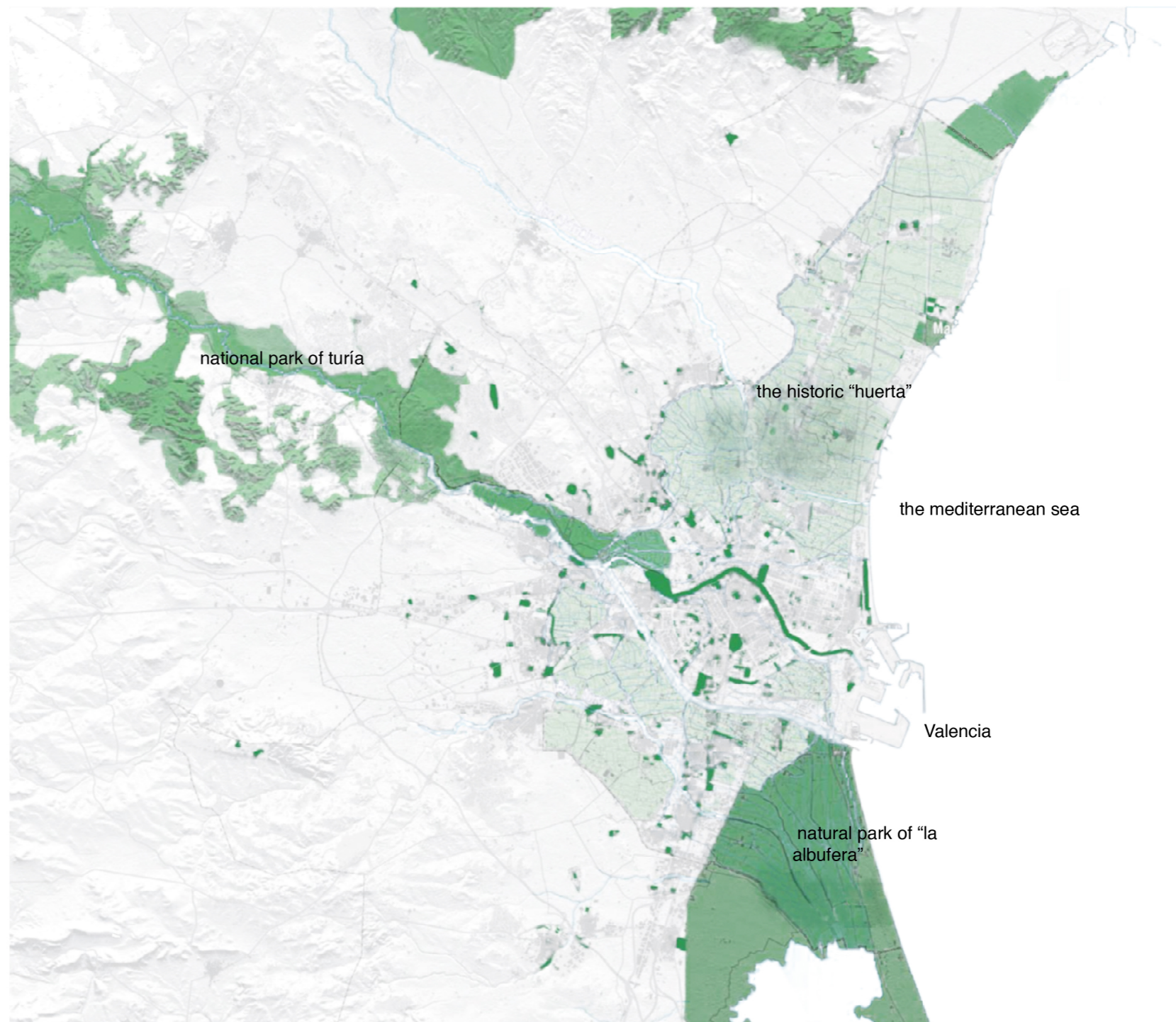
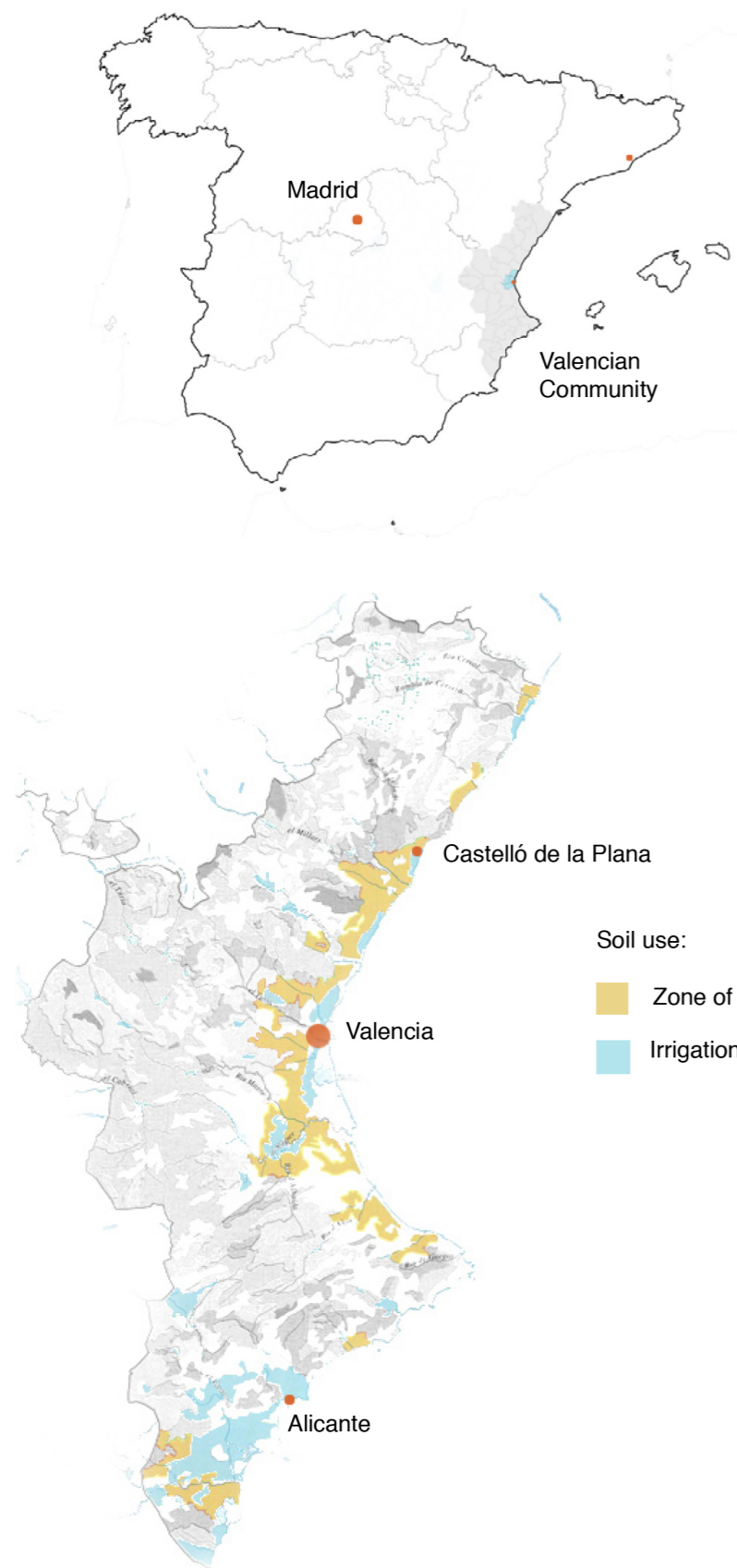
**Máster d'Arquitectura del Paisatge -DUOT - UPC**

T: + 34 93 401 64 11 / +34 93 552 0842

Contact via email at: [biennial.paisatge@upc.edu](mailto:biennial.paisatge@upc.edu)

Consult the web page <http://landscape.coac.net/>

# THE TERRITORY OF L'HORTA



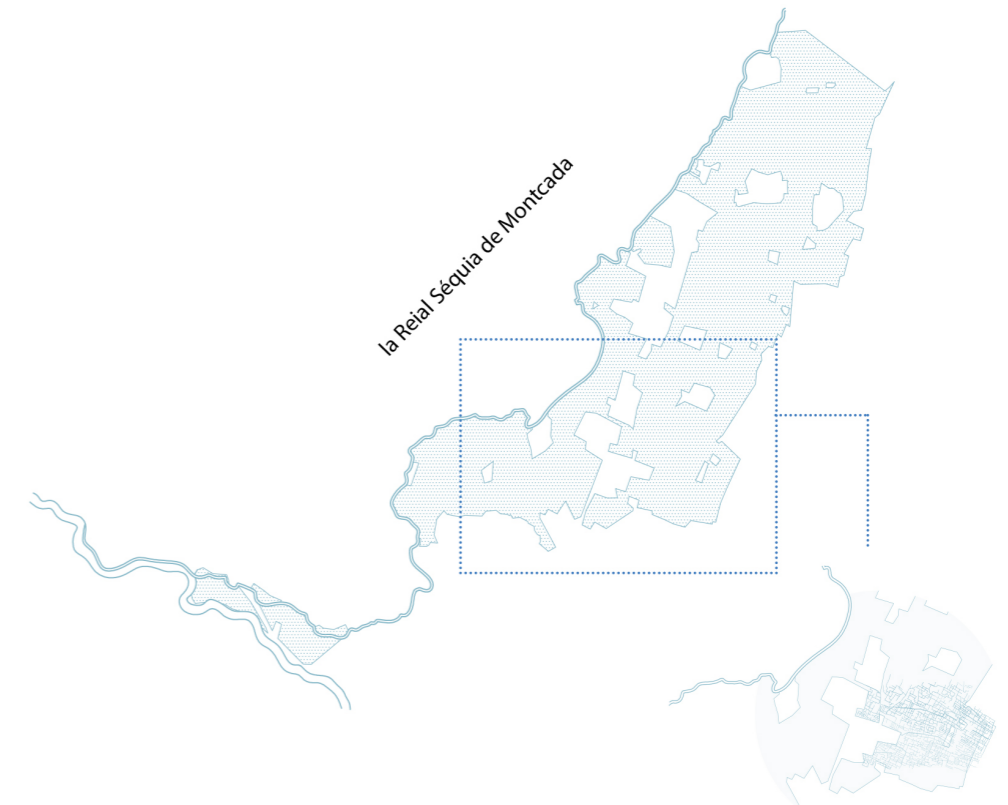
The "Horta" of Valencia is located in the surroundings of the city of Valencia, in the center of the Valencian Community.



Ecological corridors in Valencia



To control the water level and create stable conditions for an agricultural use in the land, the first "acequia" was built approximately in the X-XI century. To do this, the tributaries were accumulated and the water flow and drainage were managed. Human intervention took care of the needs of crop plants to complete their life cycles.



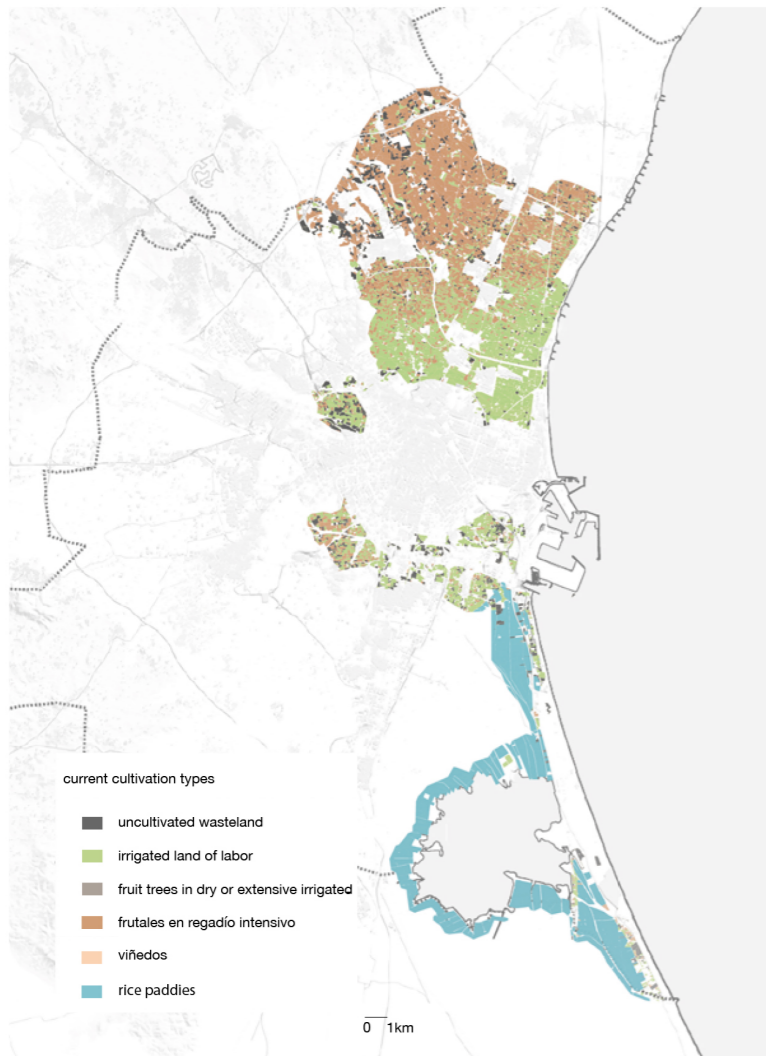
La Reial Séquia de Montcada

medium flow: 5 m<sup>3</sup>/s

Túrria river

medium flow: 14,75 m<sup>3</sup>/s

System of irrigation around Meliana town



Social value

Water always had a big influence in the all day life of the "Horta"s inhabitants.



Historical trace

Because it has maintained its original trace for many centuries, the "acequia" has a great historical value.



Ecological value

The eel moves in the ecosystem of the land "acequias" as a representative of an intact ecological corridor.



The structure of the landscape

With the shape and the courses of the water the plot of the place has been formed, creating a landscape mosaic with a singular character.

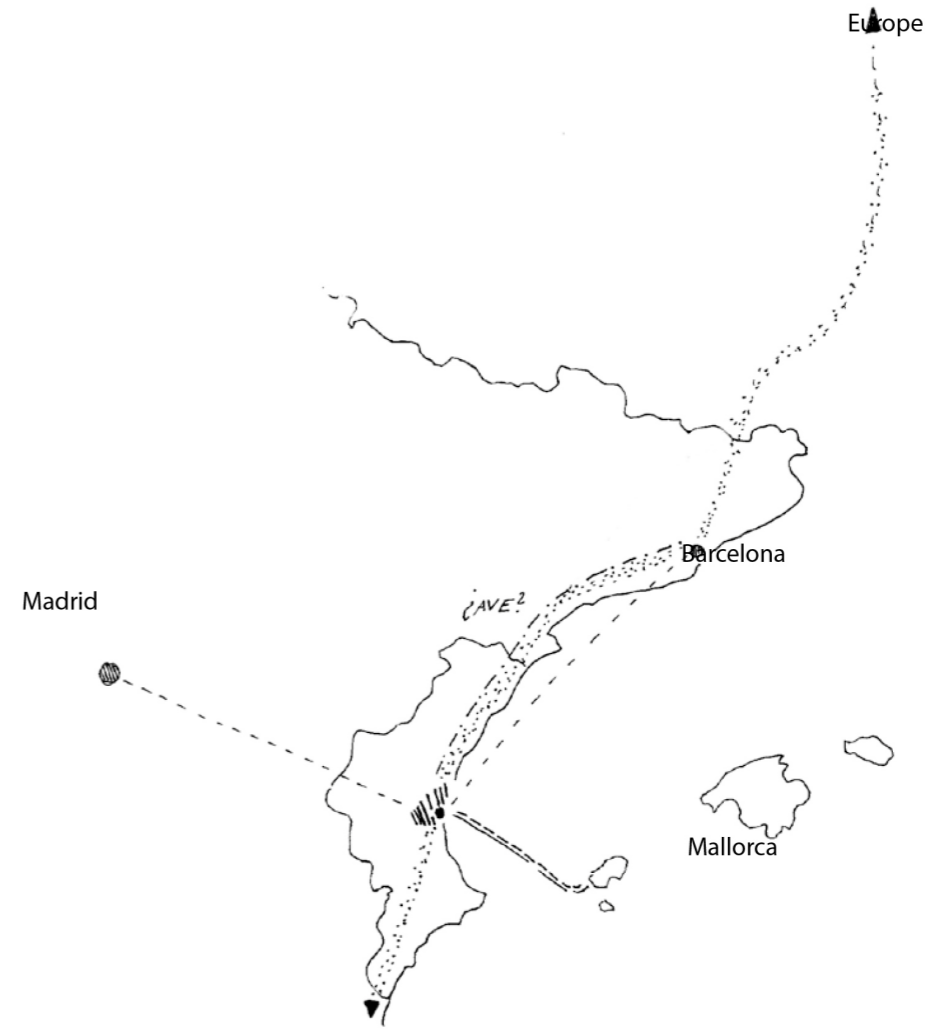


Economical value

With the "acequia", a big production of alimentacion products grow.



Human settlement, constructed area of Valencia's region



Most important spatial connections within the zone



Schematic section of "la Horta"