

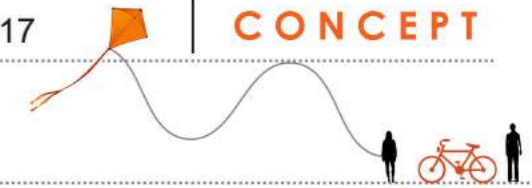
Bernburg Loop

Recreational Development at the Rural Fringe of Bernburg North

Atelier Landscape Design SS 2017

CONCEPT

Wunderkammer



Low Population gives an opportunity
to connect

Natural Surrounding + Human being

by Staging the unseen With a different perspective...



Why 'Wunderkammer' ?

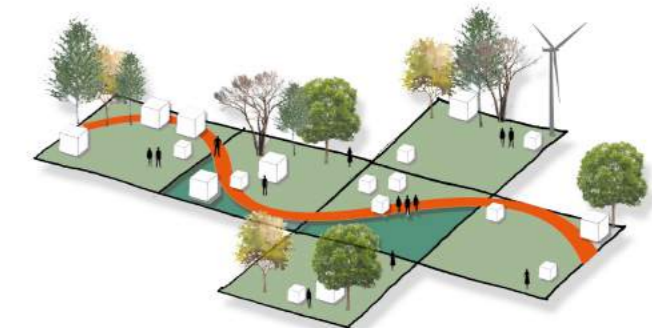
'Wunderkammer' is a place where a collection of curiosities and rarities are exhibited. We relate this project to a 'Wunderkammer' as the bicycle track travels through many hidden elements which are unknown, unseen and unexperienced. We would like to stage these element with our minimal design intervention.



A closed Wunderkammer



Opening the Wunderkammer



Wunderkammer = People + Bicycle Track + Elements

Finding Solutions for Issues

ISSUES

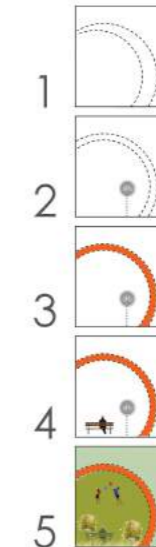
- Readable signage and homogeneous graphic language
- Pathway direction
- Clear indications
- Quality and readability of the road
- Uniformity of the pathway
- Connection between landmarks
- Safety measures
- Highlight of historical elements
- Highlight of inherent qualities of the landscape
- Suitable parking for bicycles
- Design structures increasing sense of place
- Special track joining the landscape characteristics
- Signalling activities that can be done in the area

- 1 Where do we go? What do we do?
- 2 How to get there?
- 3 What does this mean?
- 4 Where do I take a pause?
- 5 What are our options?



5 Strategies for Implementation-

1. Clear indications of the Routes
2. Consistent Character of the Route
3. Emphasizing the inherent qualities
4. Design Inputs: General Structures
5. Special Track Integrating all the user groups:
Children, Students, Seniors, Handicapped people



Priority Chart

	Do Now	Do Later
Not Crucial	1 & 2	5
Crucial	3	4

Country / City Germany/Bernburg

University / School Hochschule Anhalt University of Applied Sciences

Academic year 2016-2018

Title of the project Bernburg Loop- Wunderkammer

Authors Serena Baquero, Sharvey Salkar, Pranati Chaphekar





PERFORMATIVE NATURE

Barcelona International Landscape Architecture Biennial

September 2018 **Barcelona**

SCHOOL PRIZE

X International Landscape Architecture Biennial

Máster d'Arquitectura del Paisatge -DUOT - UPC
ETSAB- Escola Tècnica Superior
d'Arquitectura de Barcelona
Avenida Diagonal, 649 piso 5
08028 Barcelona-Spain

TECHNICAL DOSSIER

Title of the project Bernburg Loop - Wunderkammer
Authors Serena Baquero, Sharvey Salkar, Pranati Chaphekar
Title of the course Hochschule Anhalt University of Applied Sciences
Academic year 2016-2018
Teaching Staff Prof.Dr.Nicole Uhrig
Department/Section/Programofbelonging Department Agriculture, Ecotrophology and Landscape Development
University/School Hochschule Anhalt, University of Applied Sciences

Written statement, short description of the project in English, no more than 250 words

After analyzing the issues in terms of bicycle track users, it is also important to highlight the special privileges that Bernburg has; the opportunities to develop attractions.

Low Population gives an opportunity to connect Natural Surrounding + Human being by Staging the unseen With a different perspective ...

What is our goal?

Opening the soul of Bernburg through a new set of eyes is the idea behind the concept. Showing what is not normally seen and allowing the users to discover new spaces. As seen in fig. 8 a shrinking city can also be attractive, framing the inherent qualities of the area.

A place where a collection of rarities and curiosities are exhibited is named a WUNDERKAMMER. In relation to this project, the bicycle track travels through many hidden elements which are unknown, unseen and unexperienced. Staging these elements with minimal design intervention was the goal of this concept.

For further information

Máster d'Arquitectura del Paisatge -DUOT - UPC

T: + 34 93 401 64 11 / +34 93 552 0842

Contact via email at: biennial.paisatge@upc.edu

Consult the web page <http://landscape.coac.net/>

Exploring the Elements of Wunderkammer...

1 6 Minutes
1. Hohenxleben
The forest near the village entrance

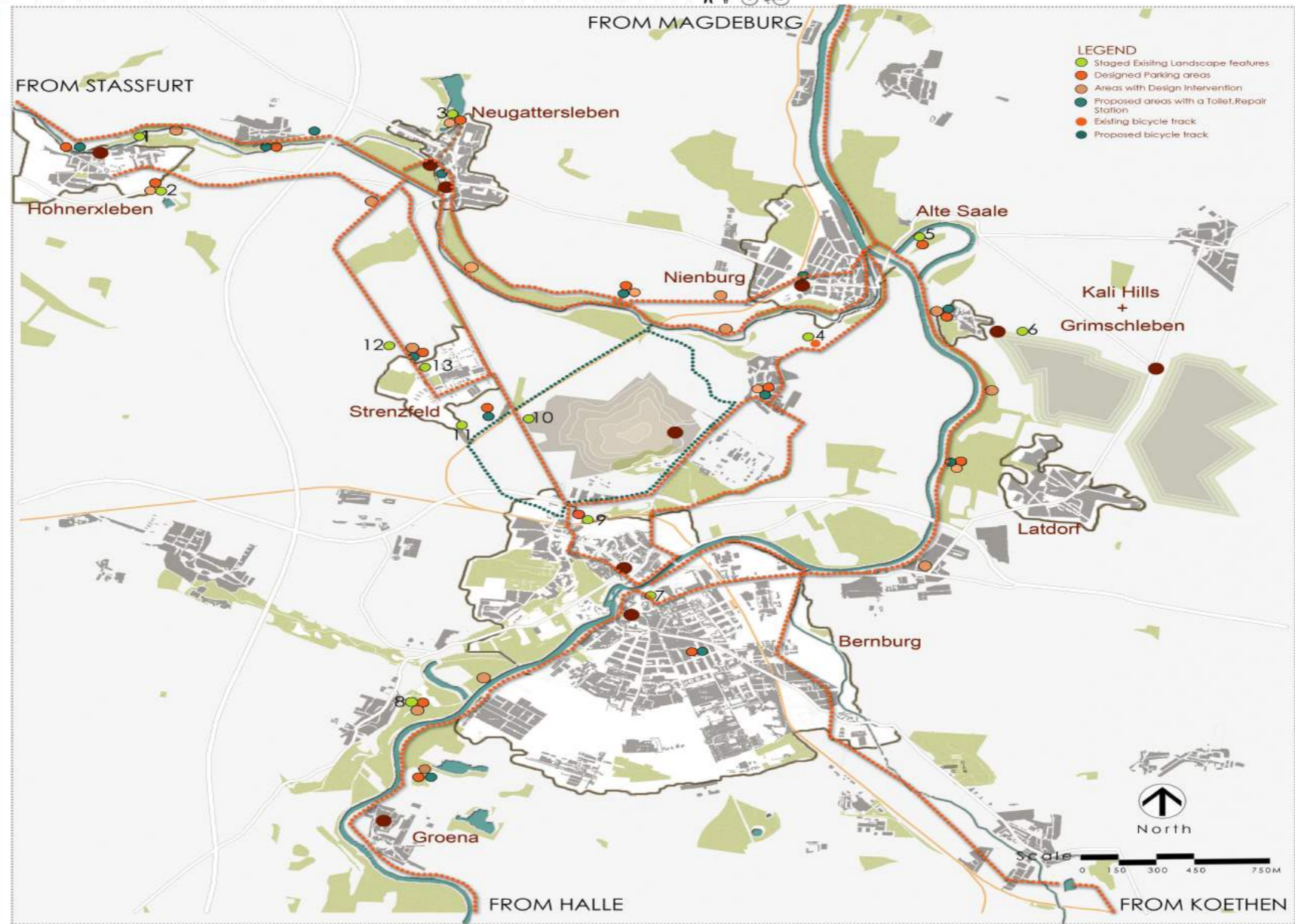
2 20 Minutes
2. Hohenxleben
The quarry area in the landscape

3 22 Minutes
3. Neugattersleben
The forest with a panoramic view

4 6 Minutes
4. Nienburg
The road over steep hills

5 10 Minutes
5. Alte Saale
The strong facility as a viewing site

6 FROM 4 TO 7 25 Minutes
6. Grimschleben, Kali Hill
This area is a great ground with a unique atmosphere



7 15 Minutes
7. Bernburg
Exterior view of the city along the river bank

8 15 Minutes
8. Bernburg
Experiencing the green landscape nearby

9 15 Minutes
9. Bernburg
The view with a panoramic view of the skyline of the city

10 5 Minutes
10. Bernburg, Mining Areas
The abandoned landscape, with the background of the industrial structure

11, 12 3 Min
11, 12. Bernburg, Strenzfeld
Wheat harvest in a field

13 5 Minutes
13. Animal & Bird Watch
Presence of animals and birds in open fields

Overall Ride-time 2.5 to 3Hrs

Master Plan : Bicycle Route

Mud RANGE

Why? **Where?**

Legend Variation in the Track

- Bicycle track in the Open Fields
- Bicycle track in Forest Area
- Bicycle Track in the Settlement

How?

City - Line Forest - Poles City - Seating

Open Grounds- Thick Line City - Amphitheatre

Staging the Unseen For the People, By the People: Smart phone Application

Existing Pins in the Application

User based Pins in the Application

Date

Time

Photo/Video

We wish to develop a Smart phone based Application - 'Wunderkammer'. This Application will help Bicycle-users to understand the Natural and Newly developed Landmarks. In and around Bernburg City. User of this application will be able to 'Pin' or 'Locate' his own landmark which he feels others should experience. Mentioning the date and time of the 'Pin' is also a crucial aspect. The user will be able to upload an image and video of the self-explored landmark. Eventually a 'Library of self-explored landmarks' will be created. These pins can suggest activities that are suitable for the specific location.

Step 1 **Step 2** **Step 3**

Plenic Bird watching Outdoor cinema Meditation Killing Open air party Concerts Boating/Fishing Fishing Camping BMX/air jump biking

presented by Serena Baquero

Pranati Chaphekar

Sharvey Salkar

directed by Prof. Dr.-Ing Nicole Uhrig
Dipl.-Ing. Meinhard Kuntz
M.A. Daeyong Kim

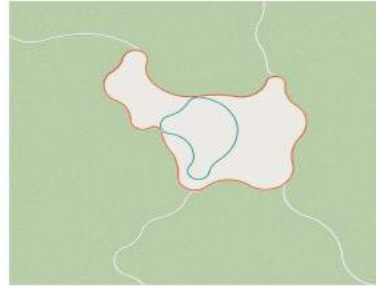
Bernburg Loop

Recreational Development at the Rural Fringe of Bernburg North

Atelier Landscape Design SS 2017

DESIGN

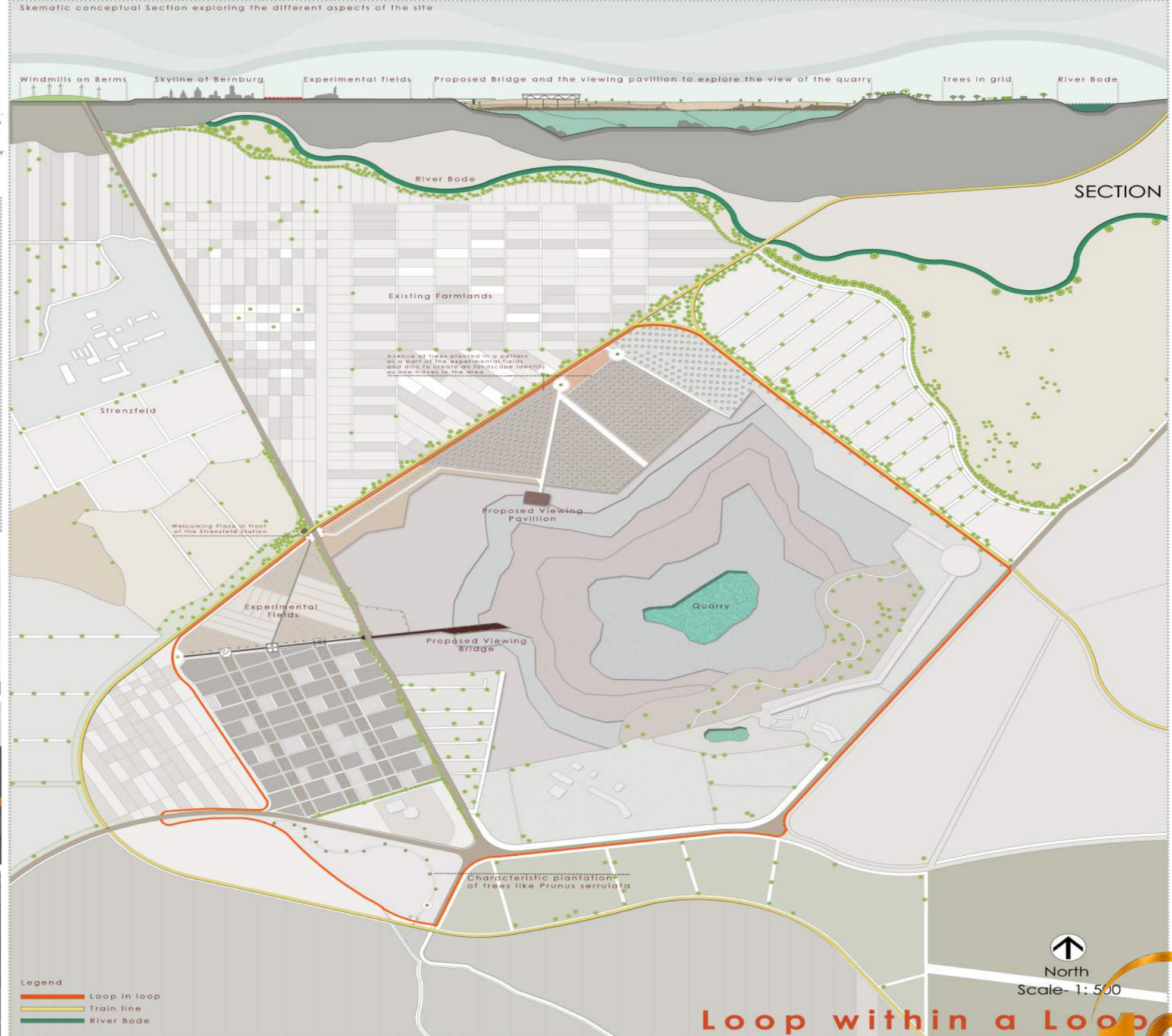
Wunderkammer



Concept of Loop within a loop

'Loop within a loop' has a strategic location between Bernburg city and Strenzfeld campus. It aims to involve the people living in Bernburg city along with tourists. This route highlights all possible features related to Bernburg city such as - Farmlands, Quarry, Railway line, skyline of Bernburg City, Windmills, tall vegetation. This loop connects to the main bicycle loop & acts as a link between Nienburg & Strenzfeld. The loop is 7KM long and takes approximately 35 Minutes to complete a bicycle ride.

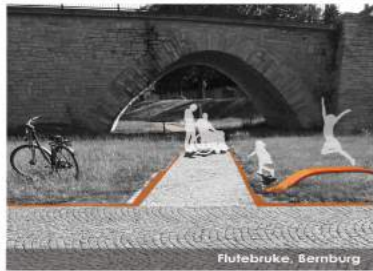
KEY PLAN



Loop within a Loop

DETAIL PLAN

CITY



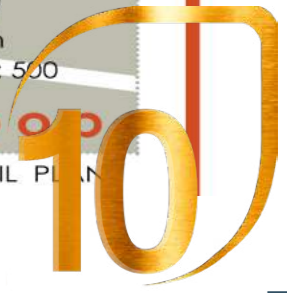
OPEN FIELD



FOREST

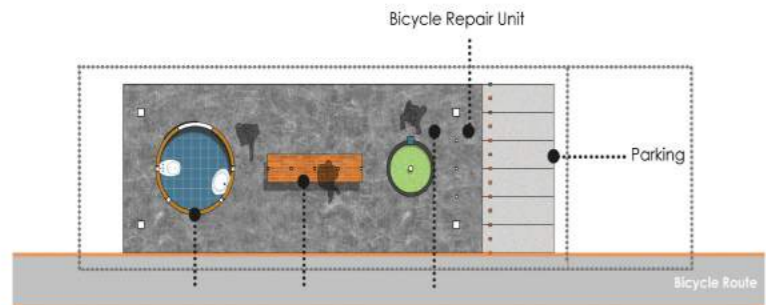


VISUALIZATIONS



Gear-Up Module

'Park + Rest + Repair + Refresh'



Plan



Elevation

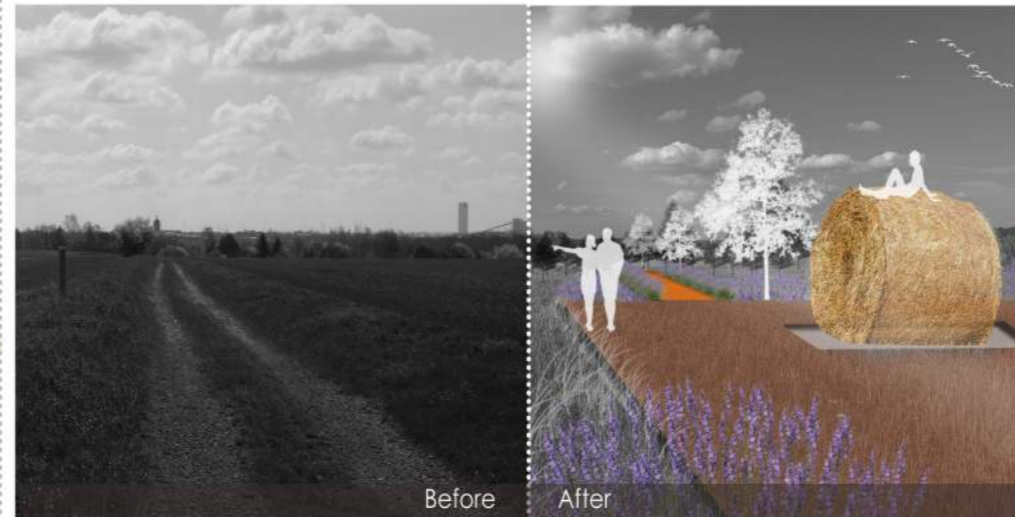


Visualization

MODULE DESIGN 1

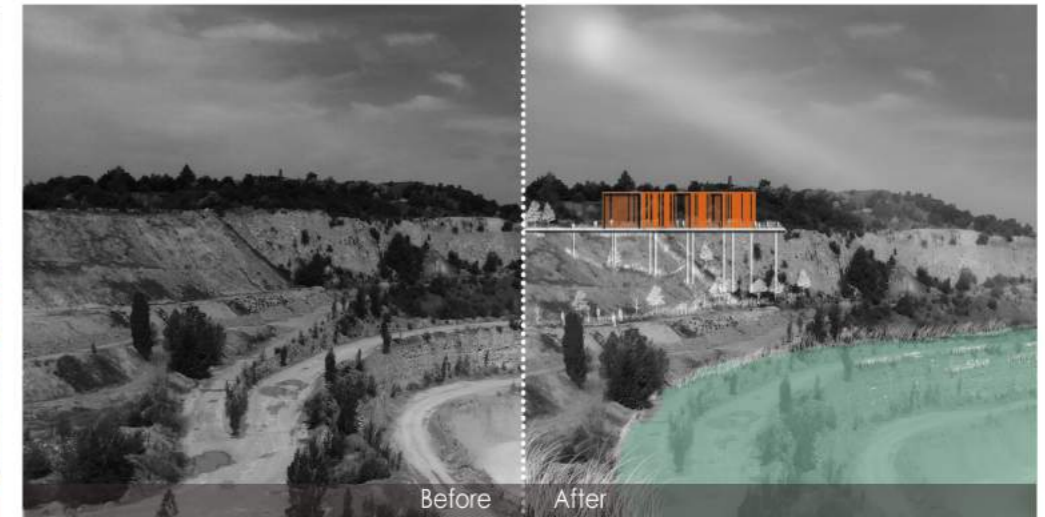


DETAIL OF 'The Three courts of Bernburg'



Before

After



Before

After

BEFORE | AFTER

presented by



Serena Baquero



Pranati Chaphekar



Sharvey Salkar

directed by

Prof. Dr.-Ing Nicole Uhrig
Dipl.-Ing. Meinhard Kuntz
M.A. Daeyong Kim

