

Country / City United States of America; Pomona, CA

University / School California Polytechnic University, Pomona

Academic year 2017-2018

Title of the project llllllll (Strips)

Authors Gustavo Coronilla, Bin Nakatani, Ryan Han, Tyler Liang, Gustavo Trochez



PERFORMATIVE NATURE

Barcelona International Landscape Architecture Biennial

September 2018 **Barcelona**

SCHOOL PRIZE

X International Landscape Architecture Biennial

Máster d'Arquitectura del Paisatge -DUOT - UPC

ETSAB- Escola Tècnica Superior

d'Arquitectura de Barcelona

Avenida Diagonal, 649 piso 5

08028 Barcelona-Spain

TECHNICAL DOSSIER

Title of the project |IIIIIII (Strips)
Authors |Gustavo Coronilla, Bin Nakatani, Ryan Han, Tyler Liang, Gustavo Trochez
Title of the course |LA 403 Landscape Design
Academic year |2017-2018
Teaching Staff |Rennie Tang
Department/Section/Program of belonging |
Department of Landscape Architecture, College of Environmental Design
University/School |California Polytechnic University, Pomona

Written statement, short description of the project in English, no more than 250 words

Jane Jacobs once said, "There is no logic that can be superimposed on the city; people make it, and it is to them, not buildings, that we must fit our plans." Based on this theory, a non-conventional design approach was taken to develop the city that offers the flexibility and variety to the experiences. In order to break away from the conventional approach, the project provided a framework of the city, which was derived from the adjacent context of the Tustin Airship Hangar site in the form of strips. Each of the strips will alternate between architectural use and the landscape strips. The landscape strips are categorized into four health categories; which are Physical Health, Mental Health, Social Health, and Environmental Health, and the design of the strips are influenced by the categories that are assigned. The strip framework resulted in a radical network that are different from the conventional approach to a city scale designing. The proposed typologies of design elements may be applied to the framework to promote social connectivity and integration that will develop a stronger community.

For further information

Máster d'Arquitectura del Paisatge -DUOT - UPC

T: + 34 93 401 64 11 / +34 93 552 0842

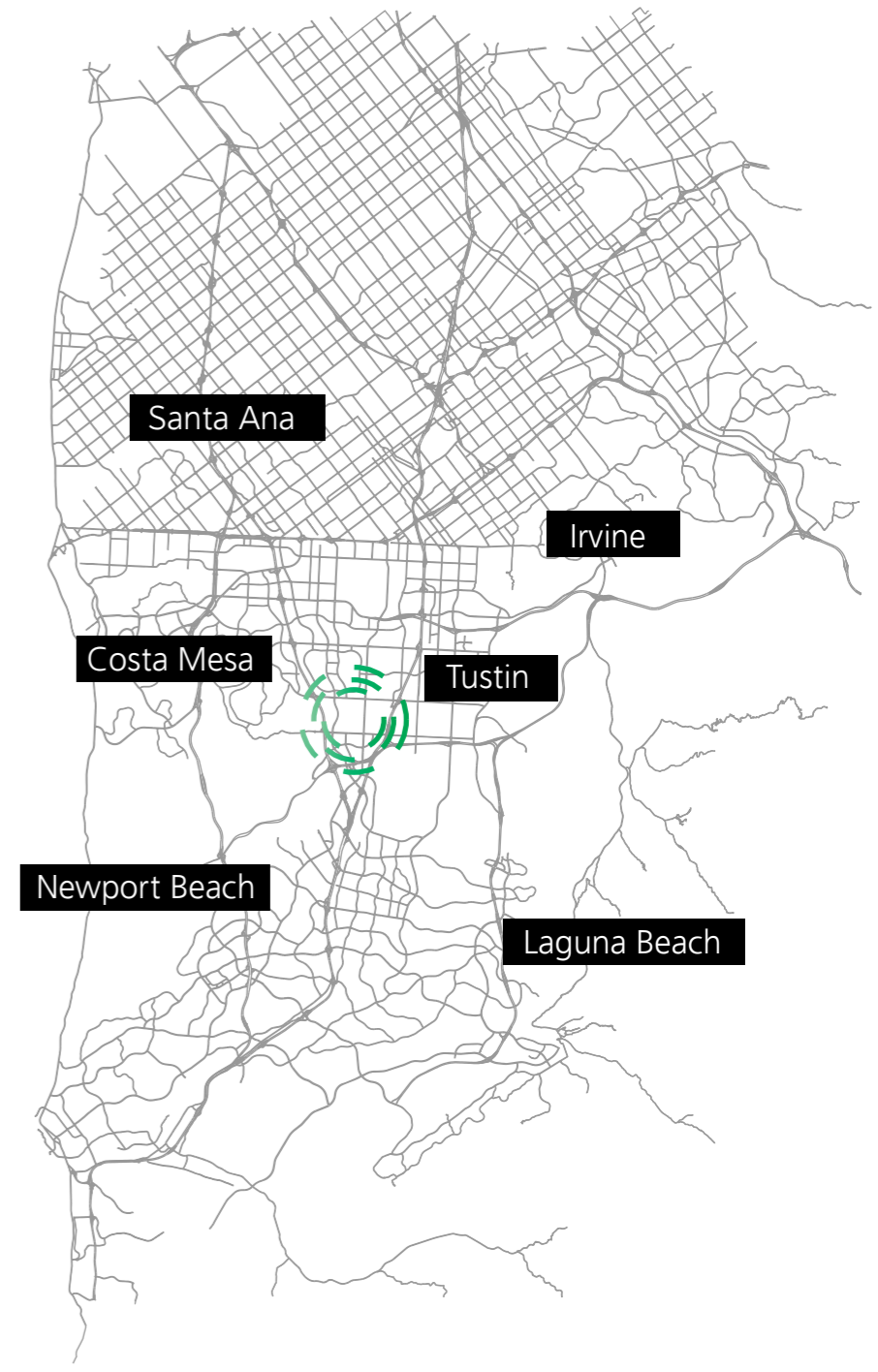
Contact via email at: biennial.paisatge@upc.edu

Consult the web page <http://landscape.coac.net/>

M
a
s
t
e
r
p
l
a
n



S
i
t
e
C
o
n
t
e
x
t



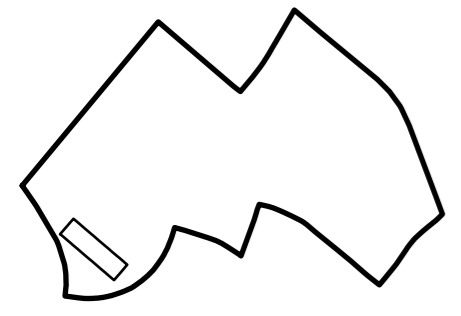
Site

Open vs. Built

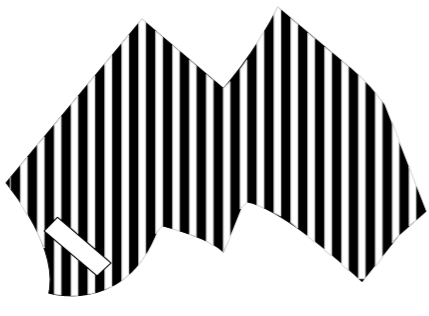
Program Strips

Streets

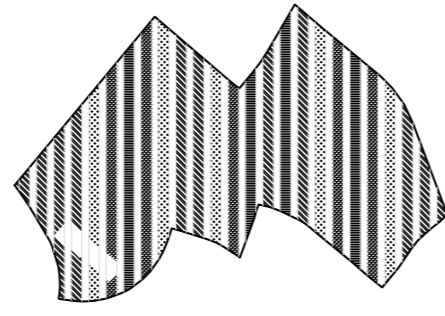
Strip Concept



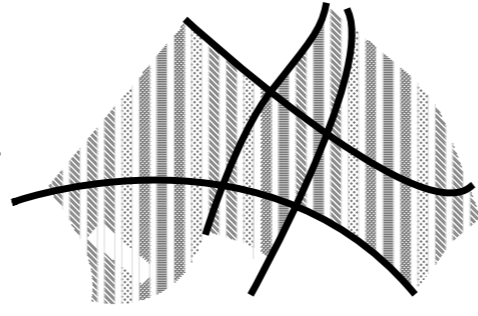
+



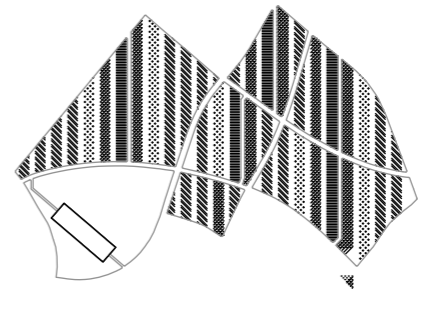
+



+



=



LANDSCAPE TYPOLOGY

PHYSICAL HEALTH

- Sports Field
- Open Space (multi-use)
- Dog Park

MENTAL HEALTH

- Therapeutic Garden
- Intimate Spaces
- Walkable Pathways
- Community Gardens

SOCIAL HEALTH

- Gathering Space
- Interactive Spaces
- Community Garden

ENVIRONMENTAL HEALTH

- Sustainable Planting Grove
- Storm Water Management
- Ecological Habitat

PHYSICAL HEALTH
+
social & env

SOCIAL HEALTH
+
env

MENTAL HEALTH
+
social & env

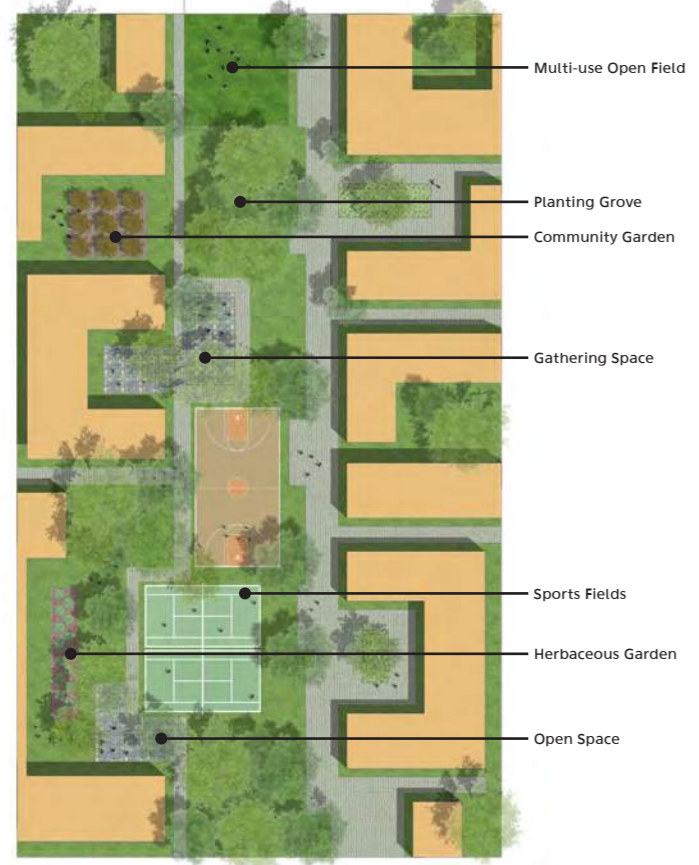
ENVIRONMENTAL HEALTH
+
social



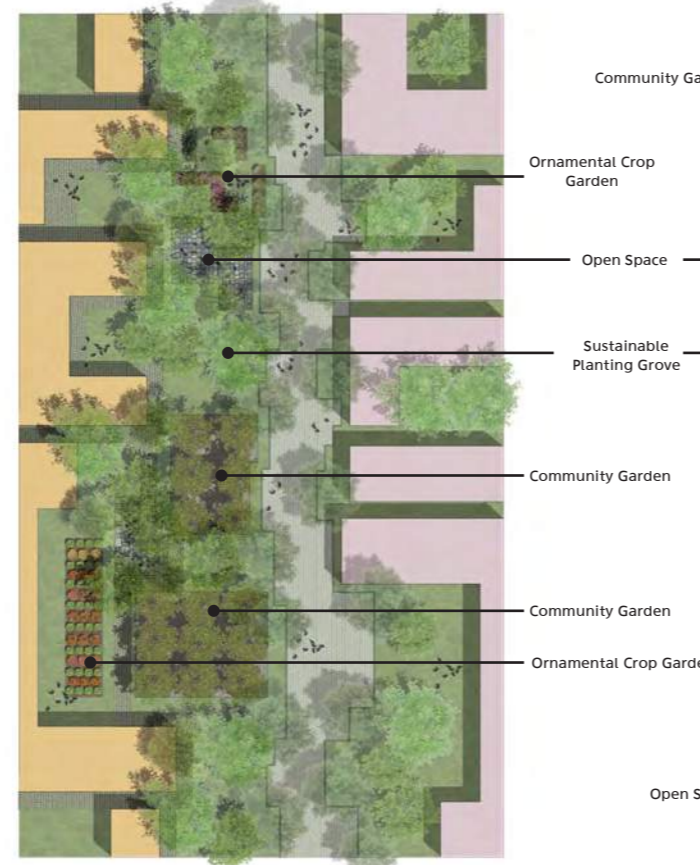
LEGEND

- Residential
- Office
- Commercial
- Parking Structure
- Physical Health Strip
- Mental Health Strip
- Social Health Strip
- Environmental Health Strip

Physical Health Strip



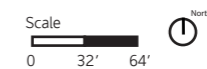
Social Health Strip

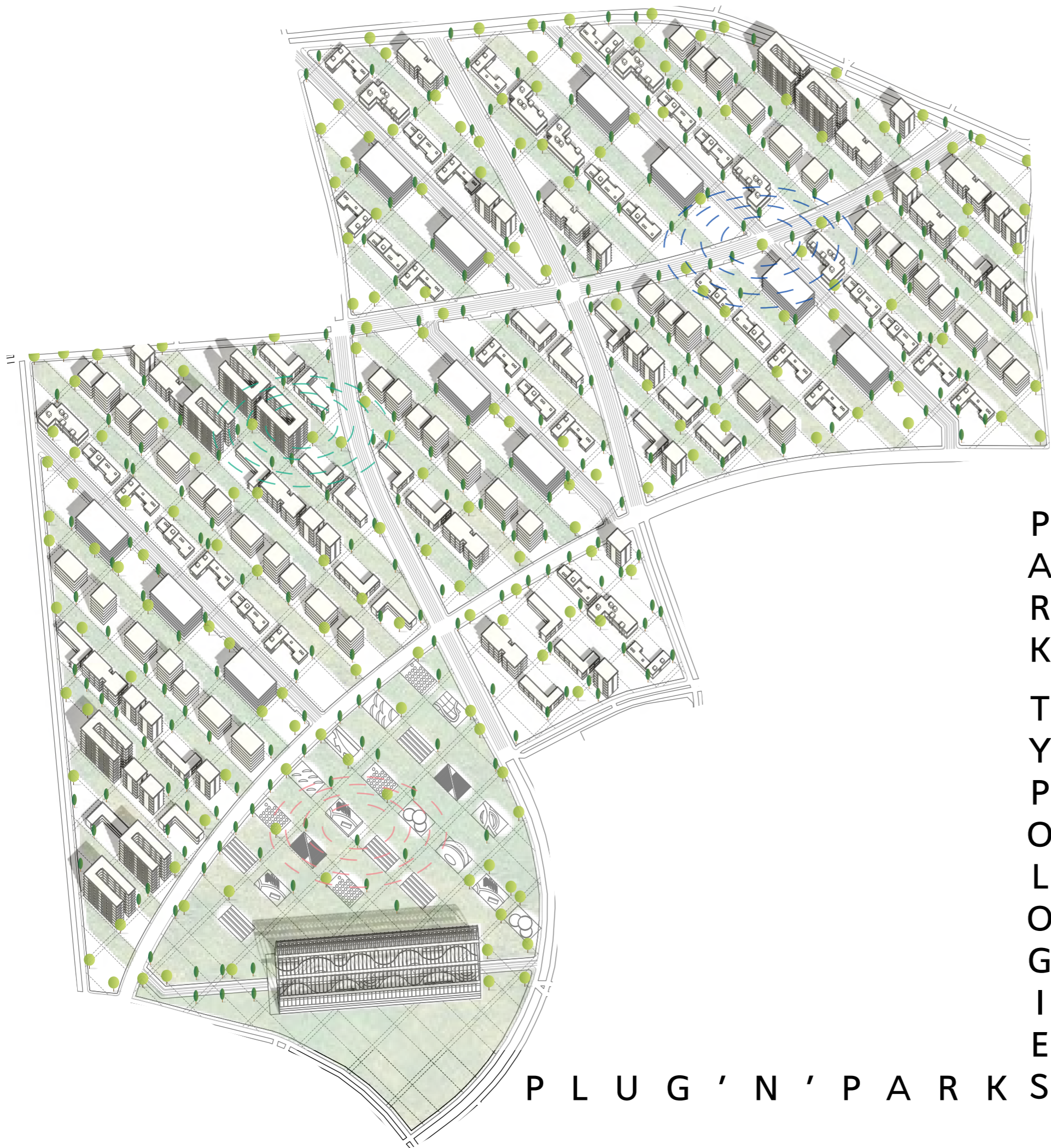


Mental Health Strip



Environmental strip



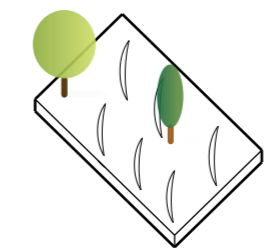


PLUG 'N' PARKS

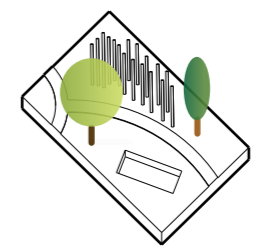


Strip Organization

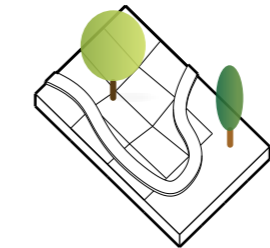
PARK TYPOLOGIES



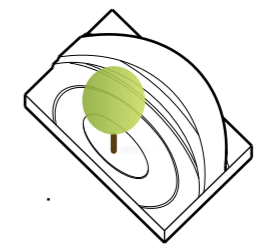
Mound



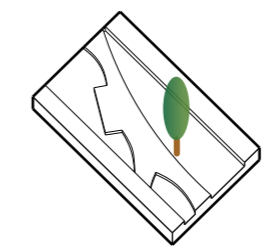
Capture & Grow



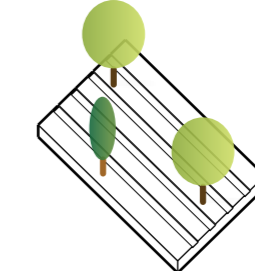
Collect



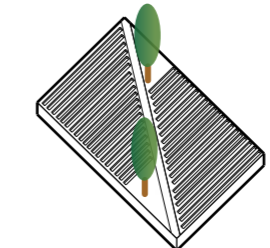
Terrace



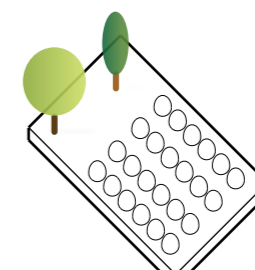
Canal



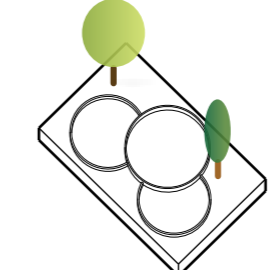
Agricultural Strip



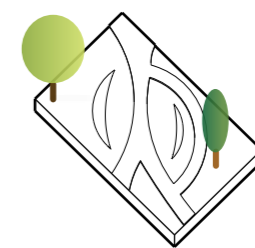
Aroma



Flora Restoration



Water Filtration



Berm Walkway

