



PERFORMATIVE NATURE

Barcelona International Landscape Architecture Biennial

September 2018 **Barcelona**

SCHOOL PRIZE

X International Landscape Architecture Biennial

Máster d'Arquitectura del Paisatge -DUOT - UPC

ETSAB- Escola Tècnica Superior

d'Arquitectura de Barcelona

Avenida Diagonal, 649 piso 5

08028 Barcelona-Spain

TECHNICAL DOSSIER

Title of the project Contemporary Natures
Authors Aristokratis Charatsaris
Title of the course Diploma Project
Academic year 2017
Teaching Staff Nikolaos Skoutelis
Department/Section/Program of belonging School of Architecture
University/School Technical University of Crete

The diploma thesis deals with the redefinition of the urban park in the contemporary era of the urban life of Athenians. A natural fragment in the city of Athens is chosen in order to redefine the relationship with the urban ensemble. The modern park, aims to answer crucial demands regarding the contact, symbiosis and integration with nature into everyday life. The central concept of design is the creation of a three levels system, aiming at the smooth integration of the natural, to the solid urban overall and the gradual transition from the intensity of the city to the tranquility nature can offer us. The park's structure is made up of three domains that accommodate uses such as: land cultivation, education and landscape, recreation and sports uses in natural spaces, walks, gatherings in nature and ultimately isolation and tranquility for the user.

The element of greenery and its varieties is organizing the gradual transition from urban life to rural life and is directly related to the triple system of the park structure. At its borders, we find low plantations, which offer transparency, urban and educational crops, and gradually, moving to the center of the park, we develop the dense forest.

Asphalt routes are removed and compressed earth paths are proposed (corresponding to the triple structure of the park). Also new sites and structures are planned to accommodate the new uses.

For further information

Máster d'Arquitectura del Paisatge -DUOT - UPC

T: + 34 93 401 64 11 / +34 93 552 0842

Contact via email at: biennial.paisatge@upc.edu

Consult the web page <http://landscape.coac.net/>



Country / City Greece/ Chania

University / School Technical University of Crete / School of Architecture

Academic year 2017

Title of the project Contemporary Natures

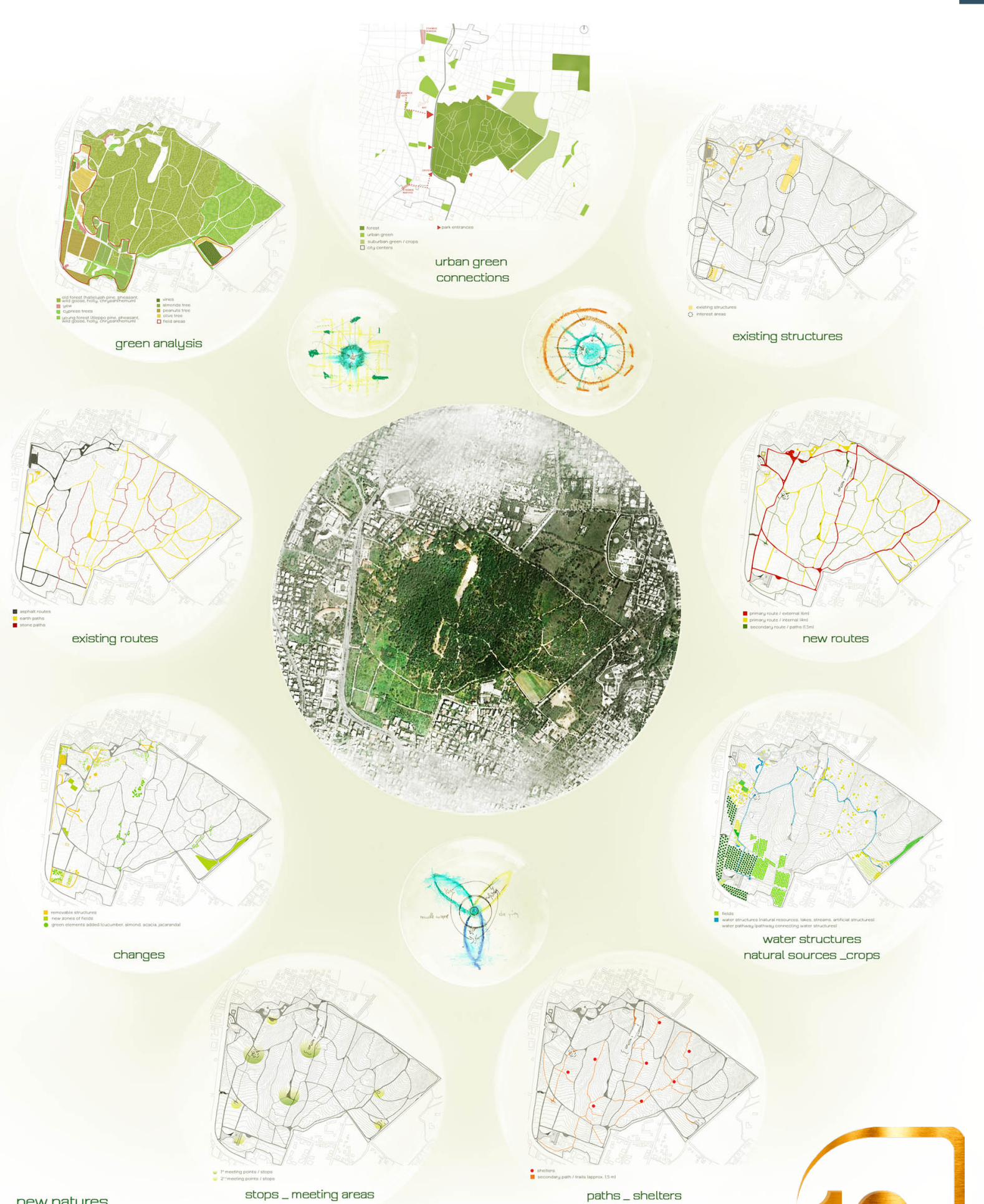
Authors Aristokratis Charatsaris



Attica basin

The observation of the Attica basin proves that nuggets of natural landscapes within the urban structure exist, vary in size and remain remnants of a lifetime struggle. Modern everyday life treats these nuggets as the limits of an unknown, inaccessible nature.

The choice of one of these urban natural landscapes is made, the Estate of Syngrou is selected at the borders of Kifissia and Maroussi and welcomes the new natures.



new natures

• **meditation with landscape** _ breakage of landscape partition and architecture. • **dematerialization** _ of disturbance of natural and perceived boundaries for the creation of spaces in association with Nature. • **space** _ creation of sequential and cinematic space, edited in a single way. • **system** _ to understand all the features proposed by the work and to rebuild a system. • **public and social functioning** _ a combination of the existential and community character of the sites with their functions. • **presence of time** _ recording and enjoyment of the presence of time in space, through the interaction caused between light and the materials selected, as well as through the material itself. • **structure and materiality** _ creation of spaces, with the essence of matter and materials.



- primary route / external (6m)
- primary route / internal (4m)
- secondary route / paths (1.5m)

masterplan



The entrance to the natural is done. The design of small structures - shelters - provides the experience of living in nature. Experience primitive, archetypal and totally personal. In order to isolate, calm and fuel the person with energy that stems from the elements of nature.



shelter 1



shelter 2



shelters



shelter 3



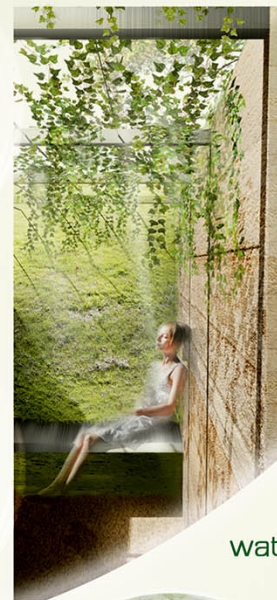
shelter 4



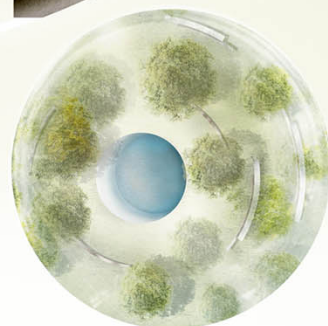
contemporary natures



green structures



water elements



metal/fire

serenity

symbiosis



pavilion _ shelter _ rest

contact with nature

Smooth reintegration into the natural virgin landscape - gradual removal from the urban space (image and sound) have a prime role. The elements of nature - earth, water, sky, fire - organize the space by providing transient places that then lead to places of contact with these elements. Public places that can accommodate groups of people and provide communication and contact.

communication

transition from urban to nature



lake_glade



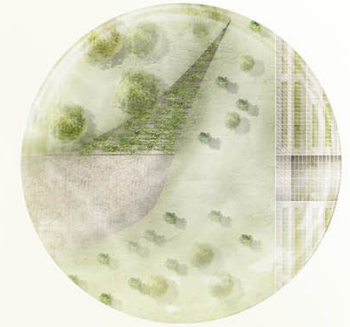
urban crops

lab of nature _ square of nature



land

agricultural training sites



1st domain

Contact, coexistence and restoration of the civil-physical relationship. Urban daily life and land production coexist via urban crops, agricultural training sites, experiential spaces - a "new-nature lab" - and recreation and cessation areas.

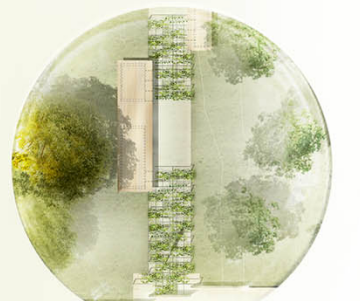


gates to urban paradises

2nd entrance_gate



experiential spaces



1st entrance_transparency

