



PERFORMATIVE NATURE

Barcelona International Landscape Architecture Biennial

September 2018 **Barcelona**

SCHOOL PRIZE

X International Landscape Architecture Biennial

Máster d'Arquitectura del Paisatge -DUOT - UPC

ETSAB- Escola Tècnica Superior

d'Arquitectura de Barcelona

Avenida Diagonal, 649 piso 5

08028 Barcelona-Spain

TECHNICAL DOSSIER

Title of the project Quarries Park of Bormida River
Authors Angela Aloi, Maria Noemi Aurilio, Giuseppe Bottone
Title of the course Landscape and regional planning
Academic year 2016-2017
Teaching Staff Proff. C. Cassatella, B. Seardo, R. Monaco - Tutor.E. Gottero
Department/Section/Program of belonging DIST Interuniversity Department of Urban and Regional
Studies and Planning / MSc in Territorial, Urban, Environmental and Landscape Planning
University/School Politecnico di Torino / School of Planning and Design

Written statement, short description of the project in English, no more than 250 words

The case study involves the Municipalities of Sezzadio, Castelnuovo Bormida and Cassine, located in the province of Alessandria, in Piedmont. After a careful analysis and interpretation of the values of the landscape and the instruments of the Plan, we have defined a strategic framework composed of 6 objectives, mainly focused on the promotion of the quality of the landscape and on the strengthening and improvement of access to the territory. The project focus was on the Bormida River, whose banks are extremely compromised by the presence of extractive areas. Hence the decision to create the "Parco delle Cave del Bormida", where the recovery of abandoned quarries is an important opportunity from an environmental, landscape and social point of view. The modalities of intervention focused more on the environmental recovery aimed at the reintegration of these areas in a naturalistic context and the reconstitution of ecological characters. These elements of disfigurement of the landscape have been reintegrated into a landscape system of great value aesthetic-perceptively, ecologically and culturally. Another important element is the conservation of the agricultural vocation and the integration of farming areas within the park. This operation aims to highlight itself as a sewing element with the surrounding productive landscape and in terms of enhancing the socio-economic and historical-cultural fabric of the local communities. The result is a park of supra-municipal interest, conceived within a broader ecological network, conceived as an opportunity to rediscover the identity of places and spaces for people to enjoy.

For further information

Máster d'Arquitectura del Paisatge -DUOT - UPC

T: + 34 93 401 64 11 / +34 93 552 0842

Contact via email at: biennal.paisatge@upc.edu

Consult the web page <http://landscape.coac.net/>



Country / City Italy, Torino

University / School Politecnico di Torino / School of Planning and Design

Academic year 2016/2017

Title of the project QUARRIES PARK OF BORMIDA RIVER

Authors Angela Aloj, Maria Noemi Aurilio, Giuseppe Bottone





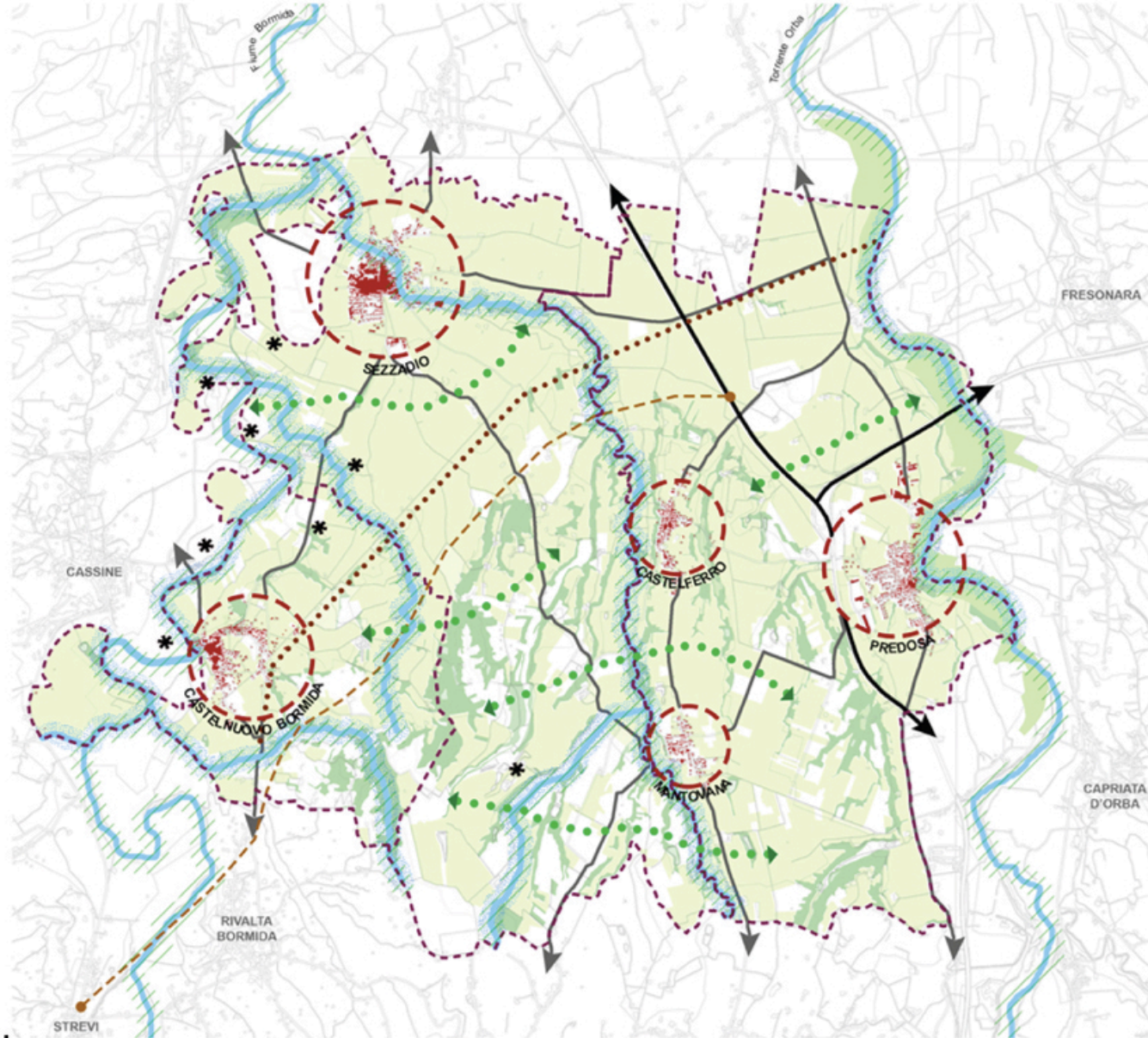
Geographical Location



Country: Italy
 Region: Piedmont
 Province: Alessandria (AL)
 Municipalities: Sezzadio, Castelnuovo Bormida, Cassine



Strategic Framework



Legend

Management and Enhancement of water resources

- Rivers
- River Banks
- Nature Reserve of Orba's creek (SIC and ZPS)

Enhancement of the Ecological Network

- Ecological Corridors of river banks
- Cross-cutting Ecological Corridors to anthropic barriers
- Wooded Areas

Improvement of the landscape quality along the banks

- Recovery of Extractive Areas

Enhancement of agricultural soils through financial incentives

- Farming Areas
- Accessibility Improvement
 - Enhancement of the main road system
 - Strengthening of the minor road system
 - Project viability Predosa-Strevi (PTR)

Protection of the historical urban system

- Urban fabric
- Via Aemilia Scauri - Archaeological way
- Perimeter of the study area

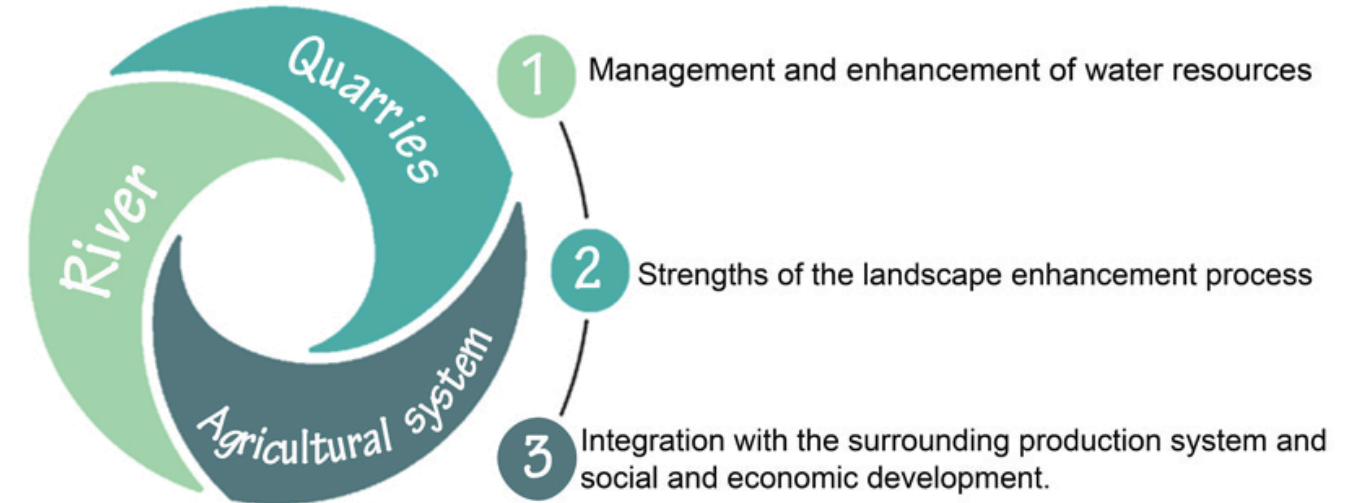


Project Idea

QUARRIES PARK OF BORMIDA RIVER

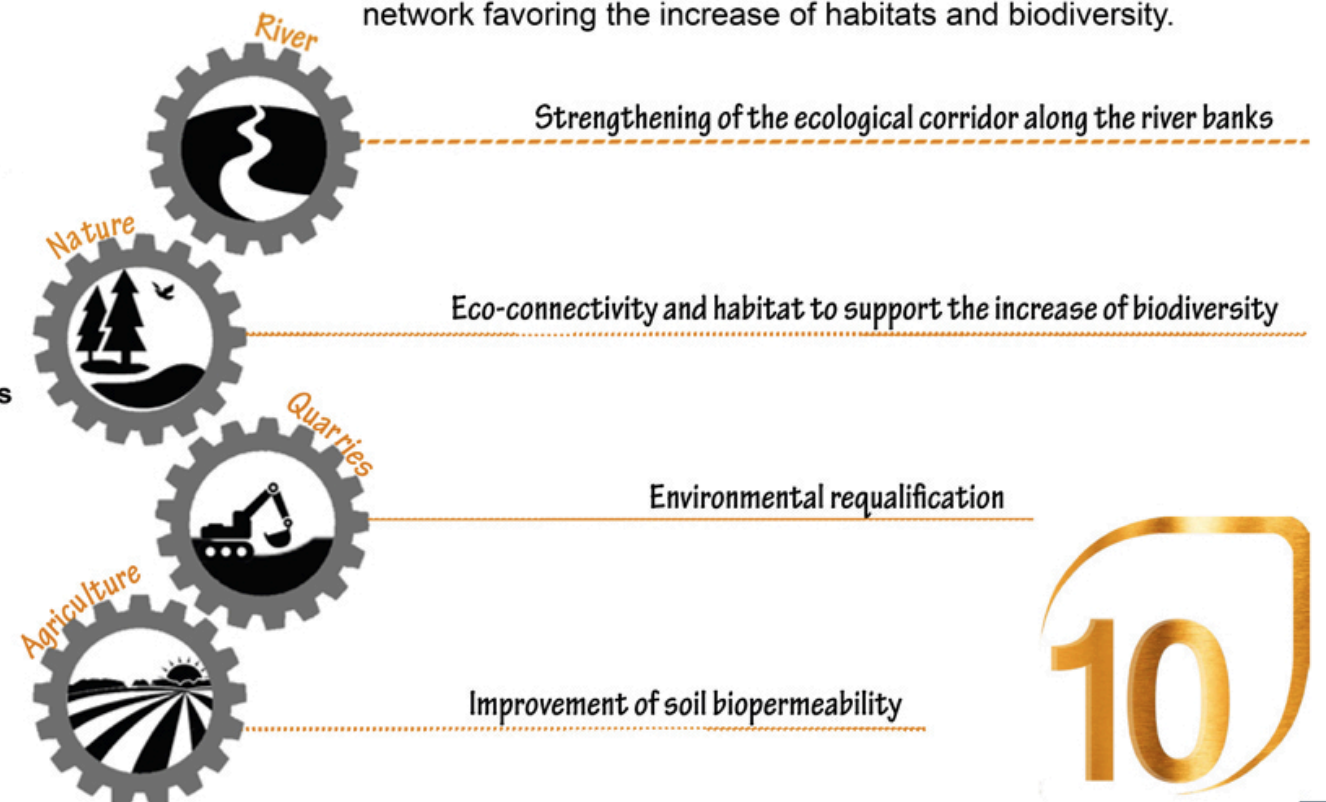
The extractive areas, transformation from territorial wound to landscape seam!

Recovering the current landscape derelict by the presence of quarries and giving back to the local communities a natural river landscape.
 An area of connection between territory and landscape, nature and local identities.



Ecological Framework

One of the most important objectives is the creation of an efficient ecological network favoring the increase of habitats and biodiversity.



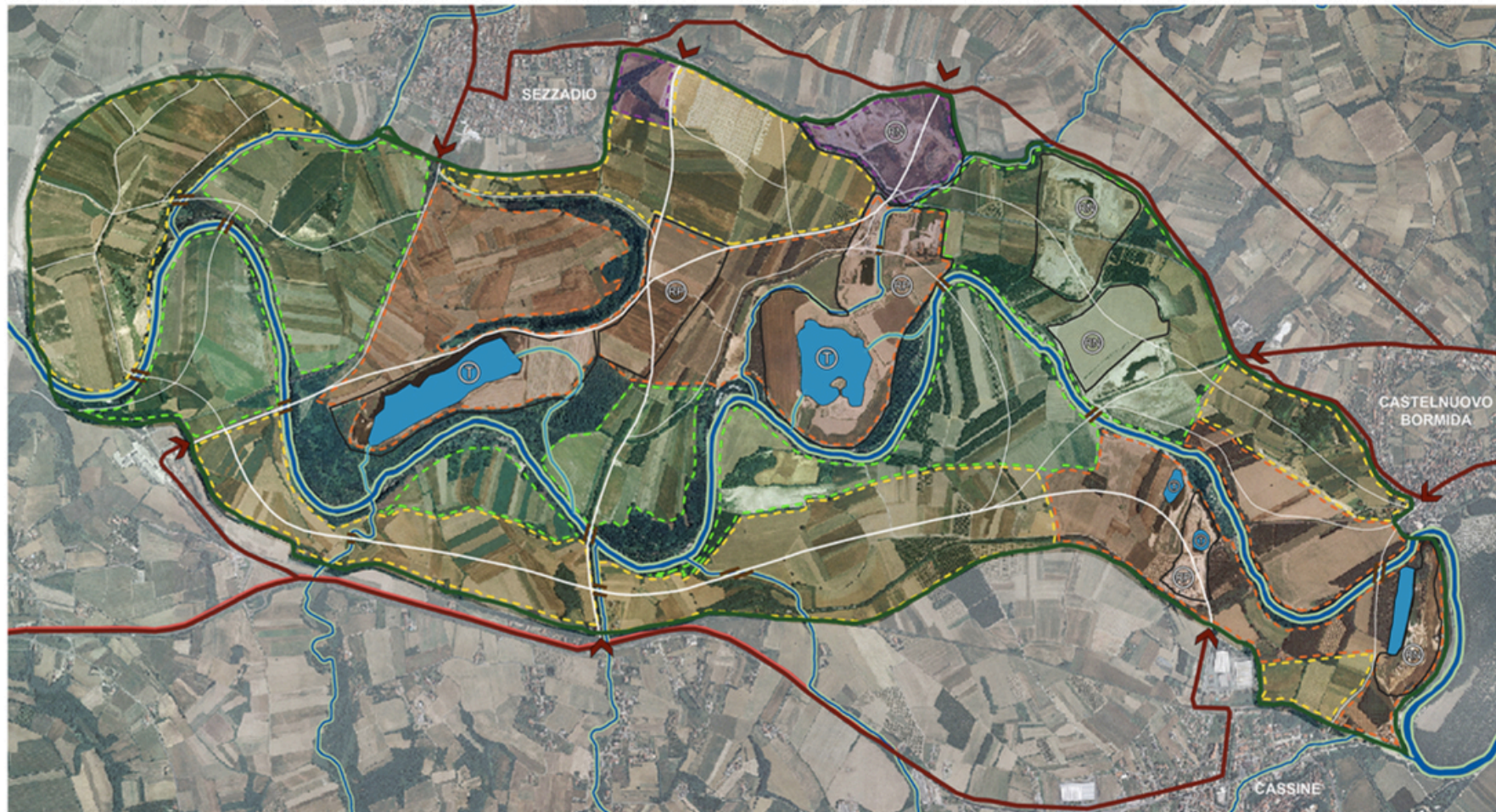
Ecological System

Legend

- **Bormida River- Main ecological river corridor**
Improvement of the quality and protection of water
- **River banks - Longitudinal ecological corridor**
Improvement of the same with the planting of willow and poplar groves
- **Tributary river- Transversal ecological corridors**
Improvement and qualitative protection of water
- **Banks of tributary river- Transversal ecological corridors**
Improvement with the planting of willow and poplar groves
- Agricultural areas- Semipermeable matrix of an agricultural nature**
Polyculture and insertion of rows and hedges
- Fruitive area- Semipermeable matrix**
Insertion of clearings and native plants
- Woodland- Buffer area**
Increase of the existing with native trees (poplars)
- Overwaters- Buffer area**
Wetland to further the evolution of biocenosis
- Quarry areas - Critical elements of non-permeable matrix**
Environmental recovery and restoration of ecological balances
- **Water directives of ecological connectivity towards the outside**
- **Directives of ecological connectivity towards the neighboring territories**
- Railway - linear anthropic barrier**
Mitigation works of the impacts deriving from linear infrastructures
- Urbanized area - Non-permeable matrix**
- Gates- Contain urban fragmentation**



Measures System



Legend

Actions

- Increase of riparian vegetation for the protection of river banks
- Mitigation works about the railway
- Increase of riparian vegetation for the protection of river banks
- Integration of the agricultural land with more crops, hedges and tree rows
- Creation of areas for relaxation and fun and realization of shaded areas with trees
- Implementation of educational and scientific areas

Actions to regenerate and conversion to other uses upon the end of mining

- Quarries areas subject to recovery
- Water collection basins of alluvial deposits
- RN Natural recovery through the inclusion of native tree species
- RP Environmental recovery through pedological operation and inclusion of the turf settle
- T Trasformation of water collection basins into overwaters
- Hydrogeological engineering techniques through the diversion of the river

Accessibility

- ↙ Access points to Park
- External roads system
- Vehicular roads
- Cycle and pedestrian roads
- Crossover-bridges of waterways

Natural elements

- Bormida River
- Bormida tributaries



Masterplan

Quarries Park of Bormida River

Legend

Accessibility

- Vehicular roads
- Cycle and pedestrian roads
- Access Points to Park

Park Areas

- Equipped Area
- Scientific and Educational Area
- Parking Area

Points of Interest

- 1 Santa Giustina Abbey (Sezzadio)
- 2 Castle (Castelnuovo Bormida)
- 3 Castle's ruins (Sezzadio)
- 4 Monumental Complex of San Francesco (Cassine)

- Hydrographic Network

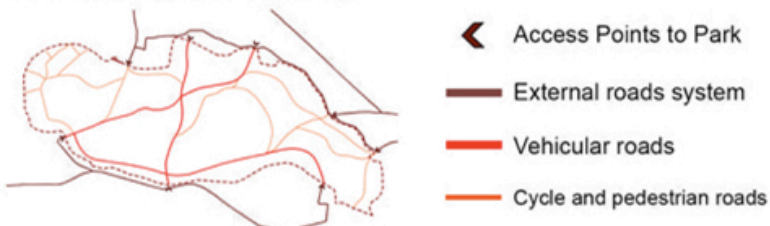


Layers

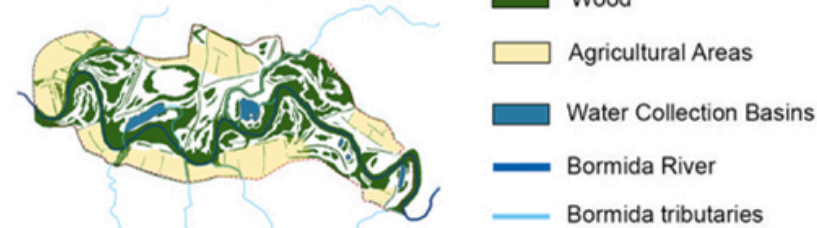
Hydrographic Network



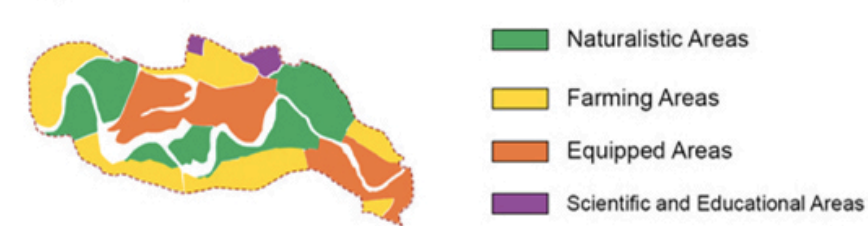
Viability and Accessibility



Ecological Network



Projected Uses



Organization of the Park

- Fruitive areas** - Equipped areas for people to enjoy and relax.
- Naturalistic areas** - Shaded area with large wooded areas.
- Farming areas** - Enhancement of the agricultural vocation of territory, integrated into the park system.
- Educational-scientific areas** - Cultivation and culture: multi-sensory theme gardens, urban gardens and workshops.
- Network of soft mobility routes.**
- Access points at city centers.**

A Landscape for Everyone!

