



PERFORMATIVE NATURE

Barcelona International Landscape Architecture Biennial

September 2018 **Barcelona**

SCHOOL PRIZE

X International Landscape Architecture Biennial

Máster d'Arquitectura del Paisatge -DUOT - UPC

ETSAB- Escola Tècnica Superior

d'Arquitectura de Barcelona

Avenida Diagonal, 649 piso 5

08028 Barcelona-Spain

TECHNICAL DOSSIER

Title of the project	REDISCOVERY LIBARNA: STRATEGIC PROMOTION BETWEEN ARCHEOLOGY AND LANDSCAPE
Authors	M. Bua, C. Gabrielli, F. Leonardo, V. Sabella
Title of the course	Landscape and regional planning
Academic year	2016/2017
Teaching Staff	C. Cassatella, R. Monaco, B. Seardo. Tutor: E. Gottero
Department/Section/Program of belonging	DIST Interuniversity Department of Urban and Regional Studies and Planning / MSc in Territorial, Urban, Environmental and Landscape Planning
University/School	Politecnico di Torino / School of Planning and Design

Written statement, short description of the project in English, no more than 250 words

The project idea is to improve the visual perception of the archaeological area of Libarna. The site under study is located between the towns of Serravalle Scrivia and Arquata Scrivia, south of Piedmont. The current archeological area represents a small part of the ancient city: now the amphitheater, the theater, two districts and some urban streets are visible, while the thermal baths, the urban gates and the forum have been reinterred, recognizable by 3D reconstructions. The interest for the archaeological area comes from the intention to increase the value of the whole area from both points of view, perceptive and a fruitive. The site is less visible due to the presence of two railway lines that completely cut off the area and make it unattractive.

The elaborated analyzes reveal the problems and the critical points the visual sensitivity cartography, obtained thanks to the viewsheed analysis tool, research of perceptual scenic elements, reveal the presence of visual detriment elements. The proposed interventions concern the rethinking of access points and infrastructure upgrades. Furthermore, is considered appropriate to set in the creation of mitigation barriers, which solve the problem related to the cumbersome presence of the two railway lines. A fundamental initiative regard the creation of a territorial brand, with the aim of re-launching the landscape-environmental and historical-cultural heritage, giving rise to a multi-purpose itinerary that puts the peculiarities of the territory into a network.

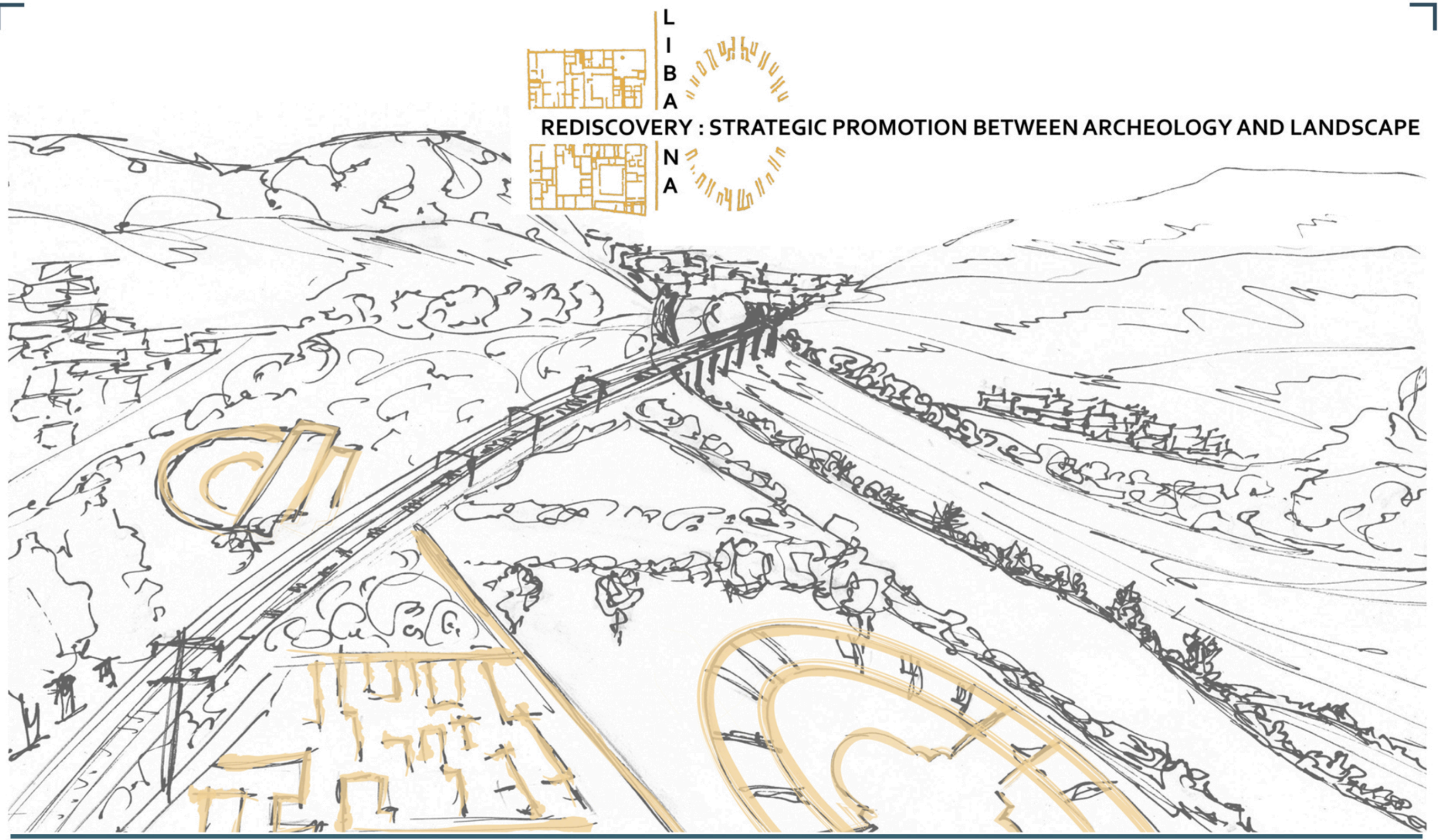
For further information

Máster d'Arquitectura del Paisatge -DUOT - UPC

T: + 34 93 401 64 11 / +34 93 552 0842

Contact via email at: biennial.paisatge@upc.edu

Consult the web page <http://landscape.coac.net/>



Country / City Italy, Torino

University / School Politecnico di Torino / School of Planning and Design

Academic year 2016/2017

Title of the project REDISCOVERY LIBARNA: STRATEGIC PROMOTION BETWEEN ARCHEOLOGY AND LANDSCAPE

Authors Martina Bua, Chiara Gabrielli, Floriana Leonardo, Vanessa Sabella

1- ANALYSIS OF THE EXISTING CONDITION

VISUAL EXPERIENCE



- Legend**
- Paths to discover the landscape**
- Connection and crossing paths
 - Internal paths
 - Scenic routes
 - || Route characterize by visual openings
 - || Route characterize by closed areas(closed areas)
- Orientation points of landscape**
- ✕ Stops point
 - ↗ Visual fulcrum of building enviroment
 - ↗ Visual fulcrum of natural enviroment
 - ... Critical factors and visual detracting

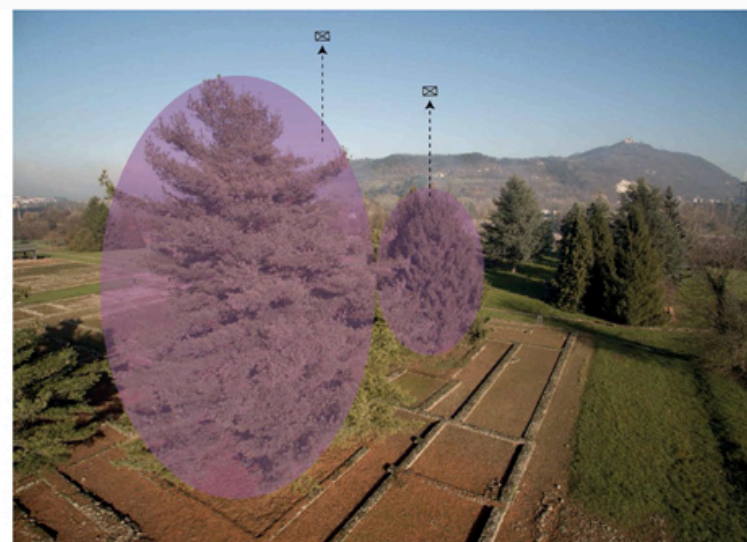
From the analysis of the existing condition is possible to observe the systems of relations between the various components and scenic situations. The visual experience shows those the recognizable landscape components, including these dominate the points of orientation and exploration paths.

Through the in-depth study of the area the scenic-perceptive elements that characterize the place are highlighted. The most obvious problems are related to the presence of visual deduction and closing elements with respect to the natural context.

SCENIC - PERCEPTIVE ELEMENTS

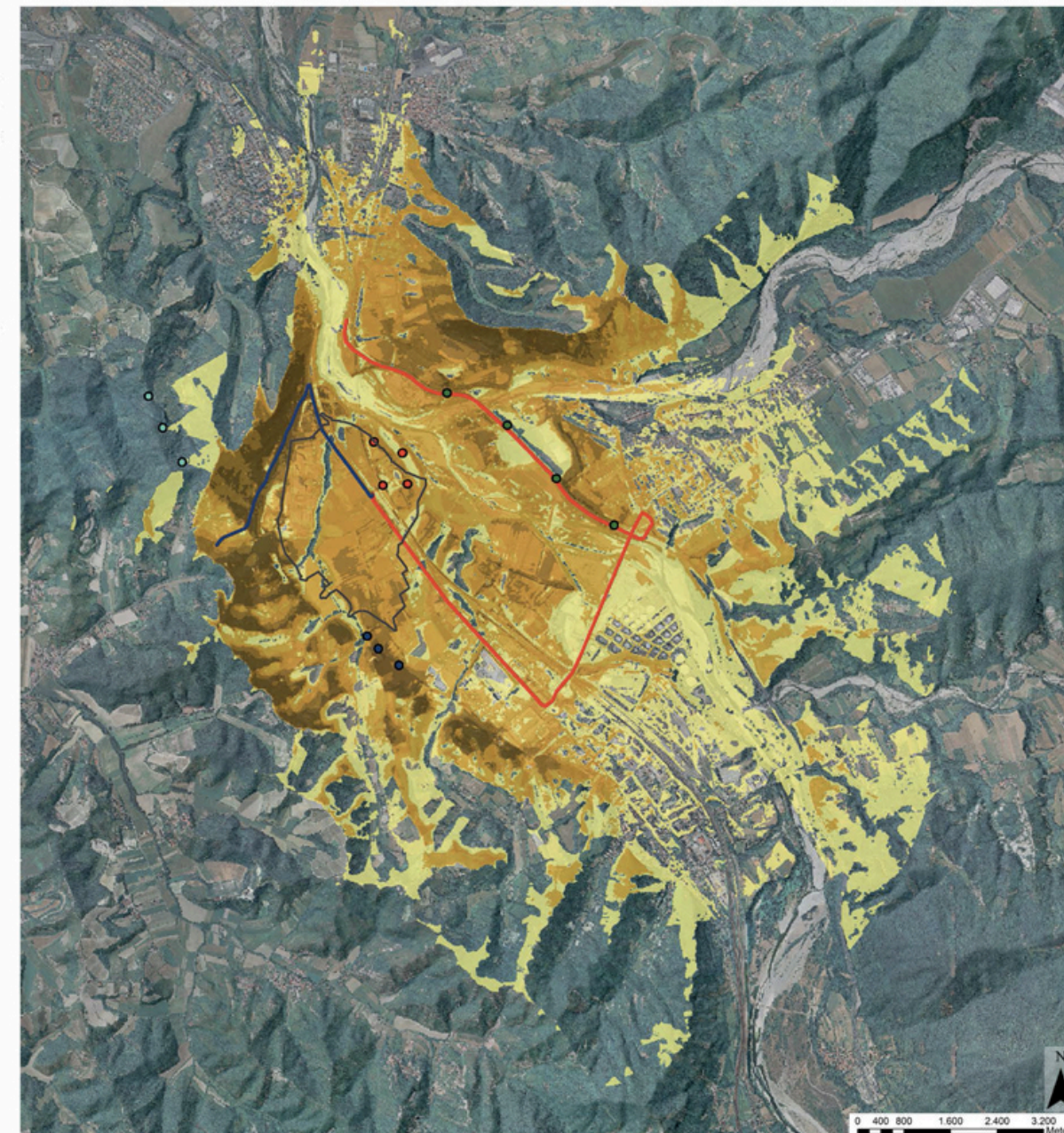


- Visual fulcrum of built environment
- Natural border
- Fragmented rural landscape
- Panoramic spot
- ⊠ Critical factors and visual detracting



VISUAL SENSIBILITY MAP

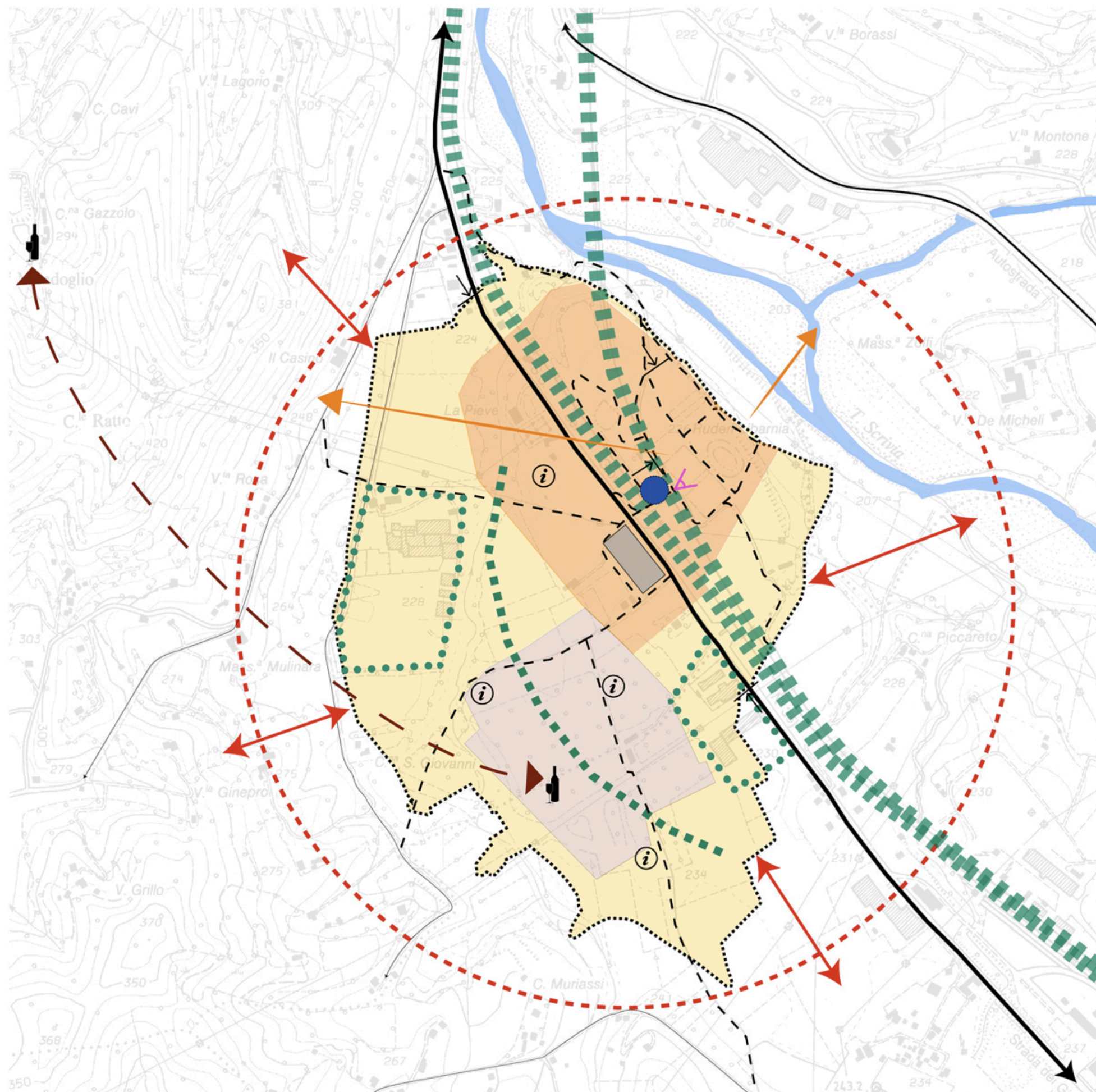
The production of the visual sensibility map, obtained thanks to an elaboration in ArcGis software, allows to restore the degree of visibility of the territory from the set of landscape observation sites, based on the digital terrain model.



Reference system: WGS84/UTM zone 32



- Viewpoint
 - Viewpoint
 - Viewpoint
 - Viewpoint
 - Path 1, from A7 to Libarna
 - Path 2, from SP161 to Libarna
- Visual sensibility**
- 1- Low sensibility
 - 2-
 - 3- Medium sensibility
 - 4-
 - 5- High sensibility



GOAL

Redevelopment of Libarna's archaeological area.

STRATEGIES

- Rethink and reorganize the archaeological site, through strengthening of the cultural offer.
- Rethink to the type of scenic landscape to be returned to the territory.

ACTIONS

- Redevelopment of access point
- Adjustment of the Giovi's provincial road
- Strengthening of existing panoramic path
- - - Creation of pathway and pedestrian
- Strengthening of existing car parking
- Redevelopment of info point and insert of meeting area
- Site reconnection with the structural elements (Scrivia's creek and the hill)
- Integration of archaeological area with external context
- Greenwall for infrastructure's mitigation
- Greenwall for existing industry's mitigation
- Enhancement of panoramic spot
- Enhancement of fragmented rural landscape
- Enhancement of scenic landscape
- Development of territorial brand
- Informative signs for the enhancement of archaeological site

Border of the archaeological area (D.lgs. 42/2004, art. 142 comma 1, lett. m)

Areas beside direct link (D.lgs. 42/2004, art. 10)

Archaeological area of Libarna

Prevision of new digs

Areas beside indirect link (D.lgs. 42/2004, art. 45)



EXISTING CONDITION



PROPOSALS



Adjustment and definition of the actual pedestrian paths inside the archaeological site, through the arrangement of the paving and the insertion of signs for tourist promotion.

Creation of greenwalls for the visual mitigation of the Suissa's industrial area on the archaeological site.
Adjustment of the Giovi's provincial road section, through the insertion of sidewalks.

COMPARISON WITH BEST PRATICES OF ARCHEOLOGICAL AREAS IN ITALY



Redevelopment of access point to the site



Adaptation of pedestrian paths



Redevelopment of the overpass



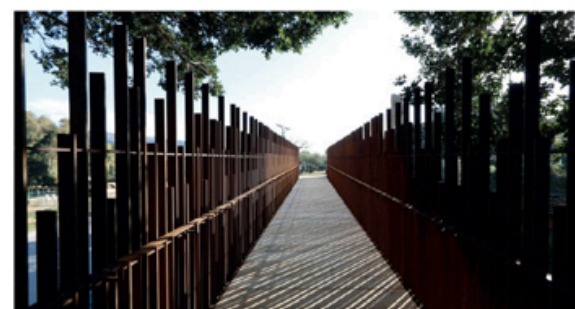
Enhancement of information



Archaeological Park - Selinunte (TP)



Imperial Fora - Rome (RM)



Valley of the Temples - Agrigento (AG)



Archeological area - Pompei (NA)