



# PERFORMATIVE NATURE

Barcelona International Landscape Architecture Biennial

September 2018 **Barcelona**

SCHOOL PRIZE

X International Landscape Architecture Biennial

Máster d'Arquitectura del Paisatge -DUOT - UPC

ETSAB- Escola Tècnica Superior

d'Arquitectura de Barcelona

Avenida Diagonal, 649 piso 5

08028 Barcelona-Spain

## TECHNICAL DOSSIER

Title of the project	SACRA'SCENICPERCEPTION, Action Plan for the Valorization of Scenic Resources
Authors	Bing Ai, Monia Buongiorno, Pier Giacomo Mortarotti, Gabriele Salvatore Principe
Title of the course	Landscape and regional planning
Academic year	2017/2018
Teaching Staff	Proff. C. Cassatella, B. Seardo, F. Larcher, M. Bottero - Tutor: E. Gottero
Department/Section/Program of belonging	DIST Interuniversity Department of Urban and Regional Studies and Planning
MSc in Territorial, Urban, Environmental and Landscape Planning	
University/School	Politecnico di Torino / School of Planning and Design

Written statement, short description of the project in English, no more than 250 words

The Sacra di San Michele is an identity mark, it is a visual fulcrum recognized for its castling on Pichiriano Mount, visible from most of the territories around and from the Turin plain. The Action Plan for the Valorization of Scenic Resources is inserted, as an operational tool, in this laborious path of Unesco application, and it is going to analyze and indicate concrete improvement proposals in order to mitigate and resolve the elements of perceptive degradation present in the territory. It was possible to create a Strategic Masterplan from which it has emerged how the scenic-perceptive component played a predominant role within the system of visual relations between the Sacra di San Michele and the landscape. From the "Privileged spot to observe the landscape", the visual relationships between these and the scenic beauties were observed, taking into consideration the critical factors and visual detractor.

The design phase focuses on mitigating the visual impact caused by such factors: the renaturalization of the quarry slope of Sant'Ambrogio, thanks to morphological modeling; or even the installation of green roofs, or green bituminous sheaths on industrial buildings in order to mitigate the visual impact from the viewpoints; or the enhancement of the intervisibility, even of historical nature, between the Sacra di San Michele and the alpine village of Celle on the opposite mountain. This work lays the foundations for the development of the scenic resources present in a territory, which needs a landscape sensitivity in order to preserve and enhance its valuable components.

For further information

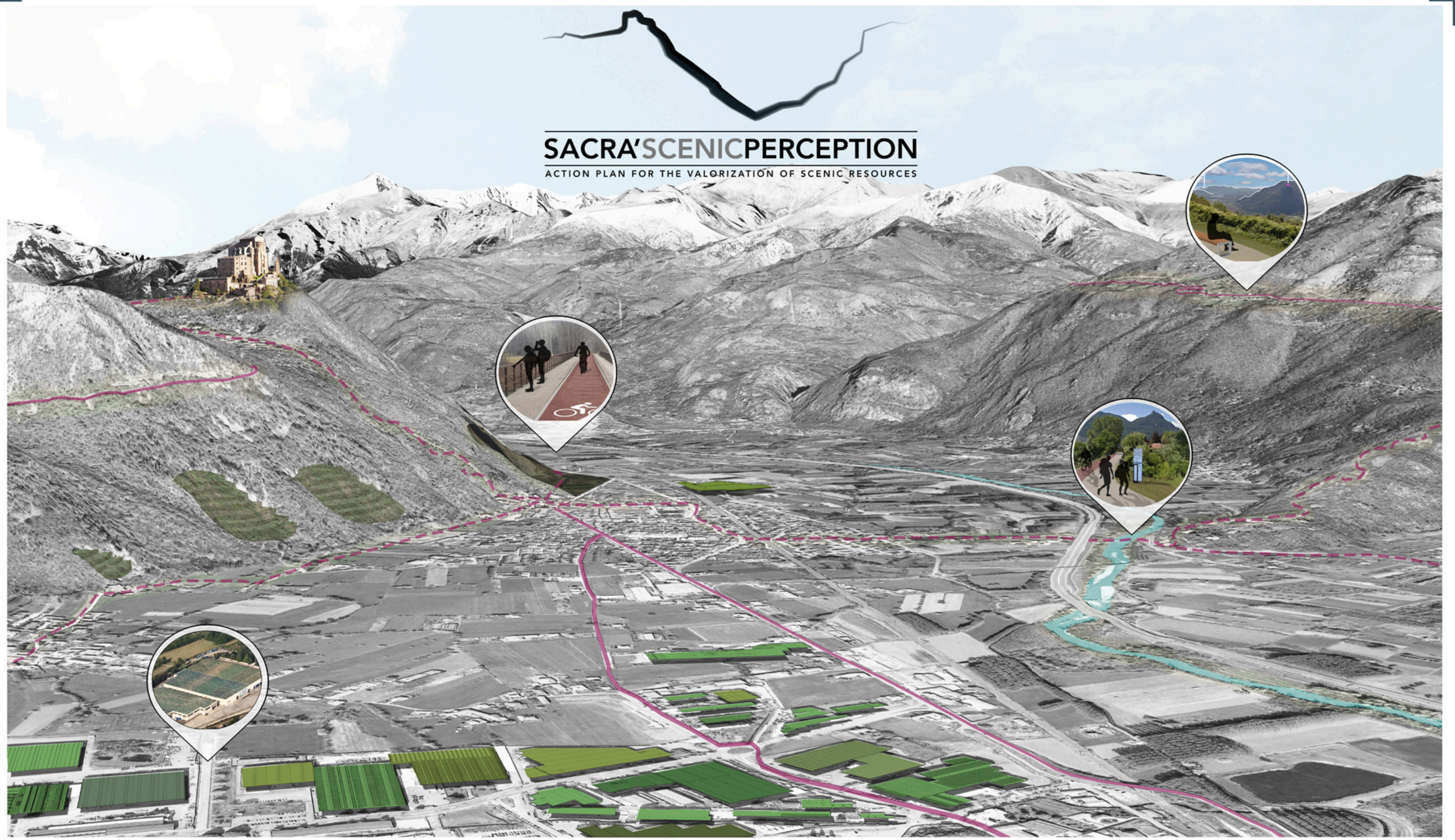
**Máster d'Arquitectura del Paisatge -DUOT - UPC**

T: + 34 93 401 64 11 / +34 93 552 0842

Contact via email at: [biennial.paisatge@upc.edu](mailto:biennial.paisatge@upc.edu)

Consult the web page <http://landscape.coac.net/>

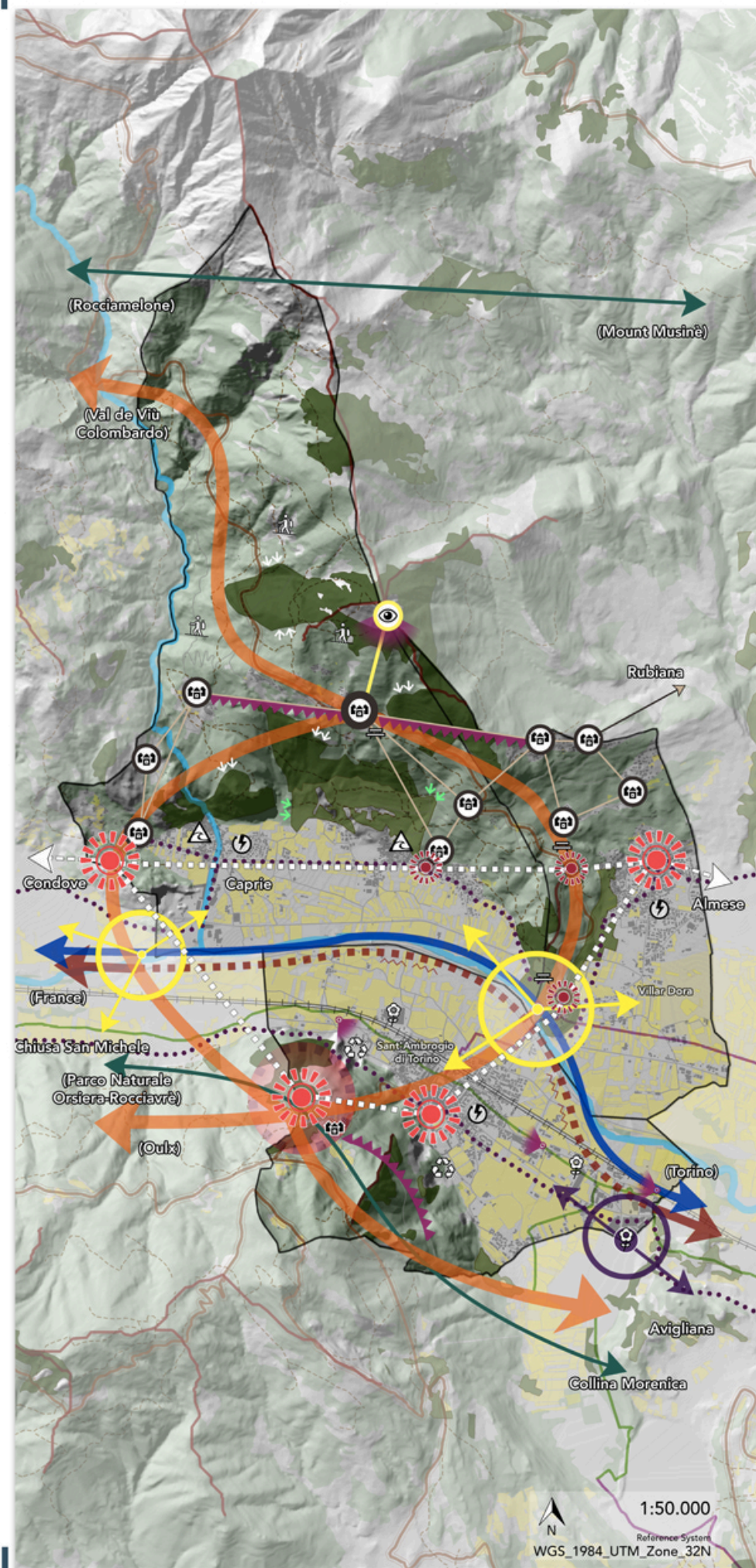




Country / City Italy, Torino  
University / School Politecnico di Torino / School of Planning and Design  
Academic year 2017/2018  
Title of the project SACRA'S SCENIC PERCEPTION, Action Plan for the Valorization of Scenic Resources  
Authors Bing Ai, Monia Buongiorno, Pier Giacomo Mortarotti, Gabriele Salvatore Principe



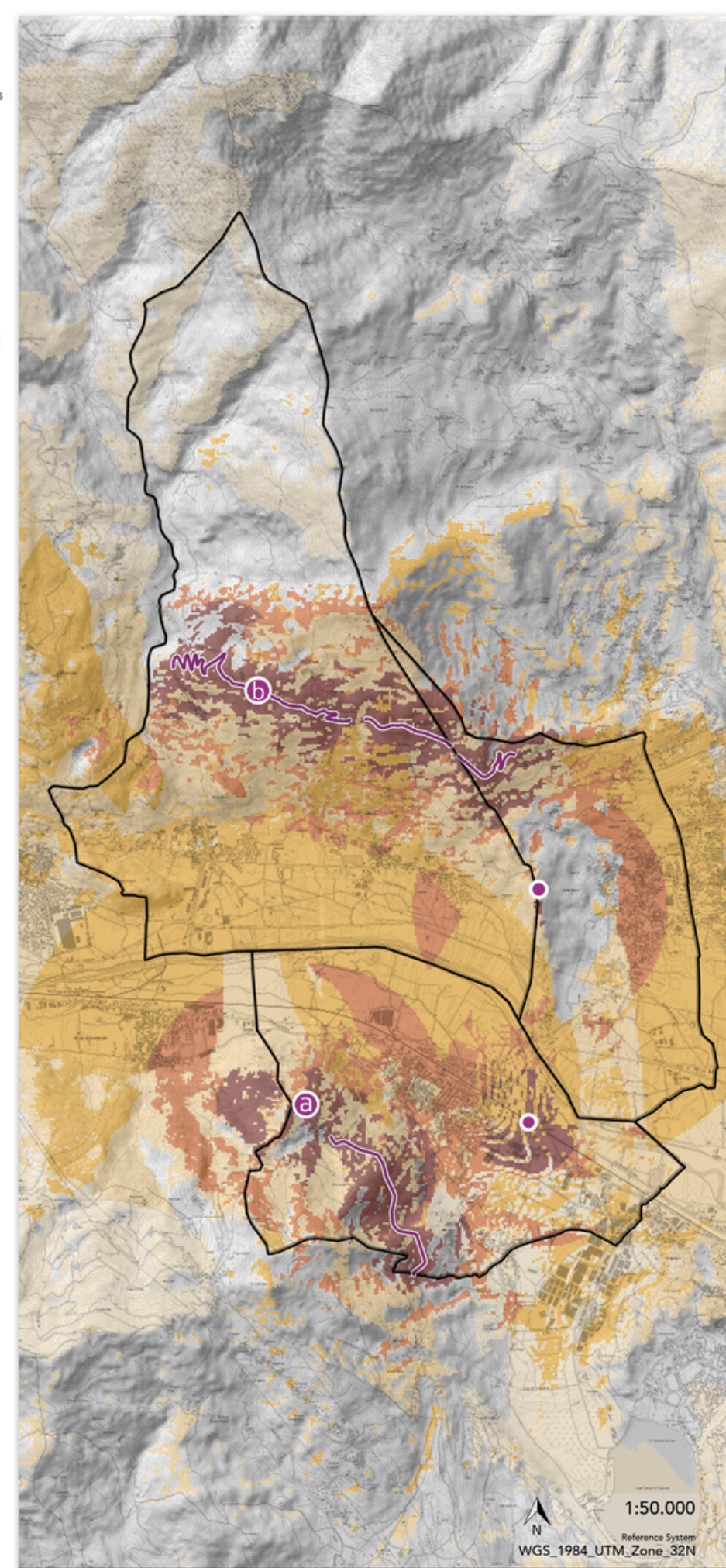
## STRATEGIC MASTERPLAN



### Legend

- Strengthening and development of the fruitive network**
    - Interconnection of the pathways network between the mountains
    - Highway connecting Torino and France
    - Improvement of existing cycleways
    - Realization of cycleways in project
    - Pathways network and relative maintenance intervention
    - Historical pathway: Via Francigena
    - Promotion of sporting activities along the Sessi torrent
    - Networking of the cultural and historical heritage
    - Networking of the alpine villages
    - Improvement of mountain fruitive networks and related activities
  - Enhancement of the scenic perceptual component**
    - Safeguarding of panoramic points and their visual basin
    - Panoramic spot with filtered access
    - Protection of scenic routes
    - Visual mitigation interventions on the highway
    - Protect the scenic integrity of landscape profiles and skyline
    - Mitigation of visual distraction elements (industrial areas)
    - Equipped areas
  - Enhancement of historical cultural components**
    - Points of historical and cultural interest (Castles network)
    - Candidate UNESCO area: Sacra di San Michele
    - Cultural-Historical assets
    - Alpine villages
  - Safeguarding and enhancing of biodiversity and naturalistic and environmental heritage**
    - Maintenance of agricultural areas that characterize the valley
    - Maintenance, prevention of wooded restoration
    - Exotic species
    - Invasion pioneer woods to be managed
    - Corridor on the hydrographic network to be strengthened
    - Ecological network
    - Forestry in forest areas
    - Containment of exotic species
  - Strengthening of institutional capacities and social policies**
    - Integrated supra-municipal planning:
      - Reactivation of the North-South connection route
      - Inter-municipal visual mitigation interventions
  - Sustainable urban development and improvement of the quality of life**
    - Reduction of energy consumption in buildings and in public and private facilities with integration of renewable sources
    - Interventions to make the inhabited areas at risk of flooding safe
    - Retraining of the quarries of Sant'Ambrogio di Torino
- Basic themes**
- Municipalities border (Caprie, Villar Dora, Sant'Ambrogio di Torino)
  - Railway
  - Main road system (BDTRE, 2017)
  - Hydrographic network
  - Urbanized areas (Corine Land Cover, 2012)
- Scale: 1:50.000  
Reference System: WGS\_1984\_UTM\_Zone\_32N

## VISUAL SENSITIVITY MAP

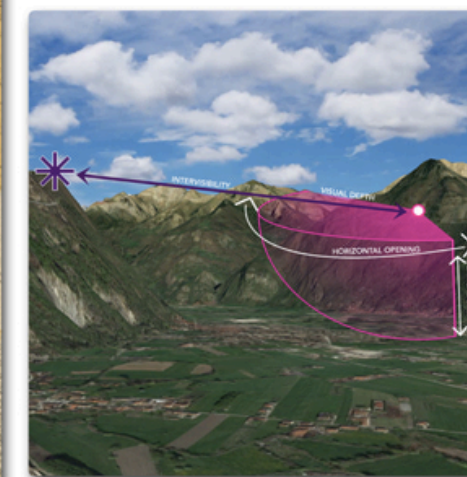


### Legend

- Municipalities border (Caprie, Sant'Ambrogio di Torino, Villar Dora)
  - Panoramic Spot
  - Panoramic Route
- Visual Sensitivity (radius 10.000 m)**
- Low
  - Medium
  - High

### DEGREE OF VISIBILITY OF THE TERRITORY FROM THE SET OF LANDSCAPE OBSERVATION SITES, BASED ON THE DIGITAL TERRAIN MODEL.

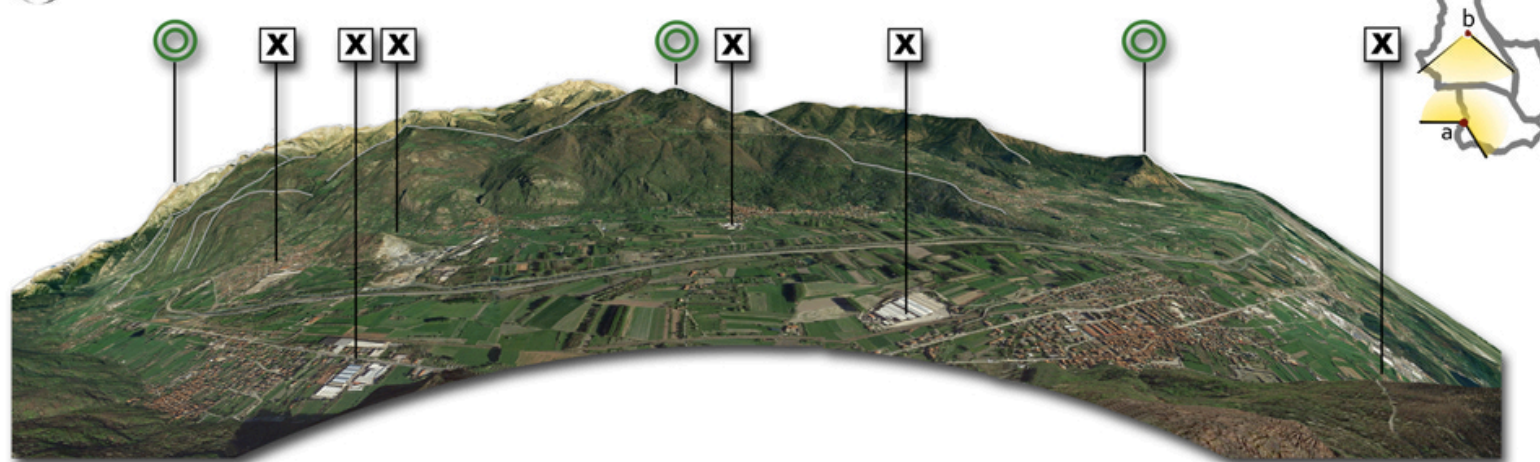
The analysis showed that some elements present in the territory and constituting **critical elements** of visual deduction, such as the **industrial plant** in the Bertassi district, or the former Sales and Cis **quarries**, are included within the areas with greater visual sensitivity, in those included in a visual range from **0 -1200m** (first level and in-intermediate level) from the **observation point** of the landscape.



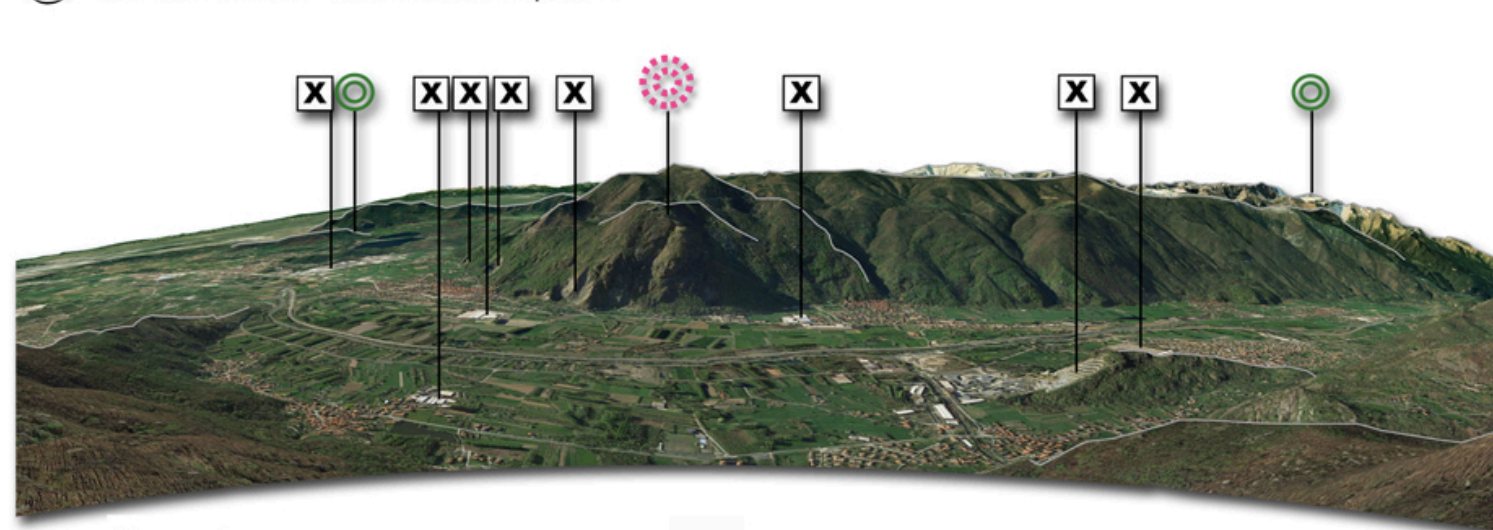


## VIEW FROM THE PANORAMIC SPOTS

a) Panoramic view from Sacra di San Michele



b) Panoramic view from Mount Caprasio



### Legend

Visual fulcrums of the built environment  
(art. 30 [1] b.i, PPR, 2017)

At sovrilocal scale isolated

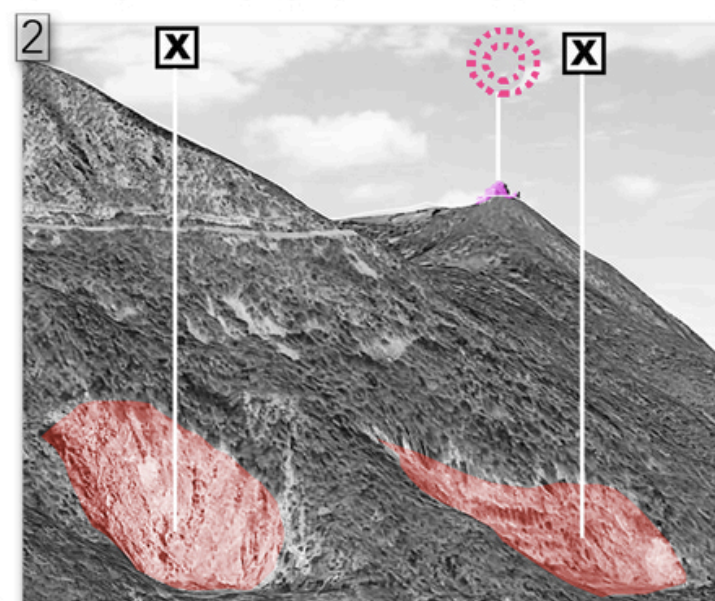
Critical factors and visual detraction  
(art. 41 [2], PPR, 2017)

Punctual Intrusion

Visual fulcrums of the natural environment  
(art. 30 [1] b.i, PPR, 2017)

At sovrilocal scale

## CRITICAL FACTORS AND VISUAL DETRACTION

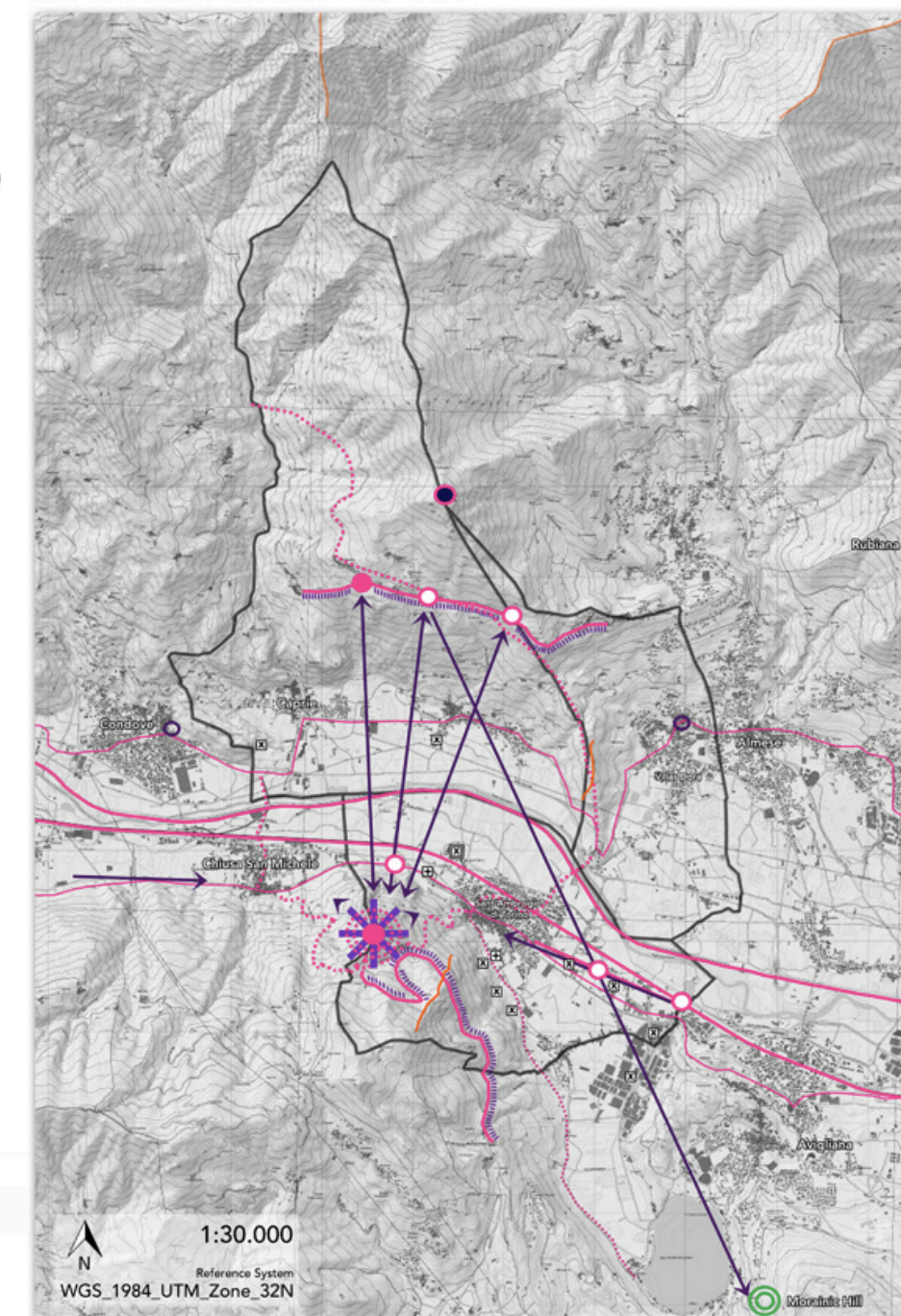


Sant'Ambrogio di Torino's Quarries



Factory

## SCENIC CHARACTERS MAP



### Legend

Points of landscape observation  
(art. 30 [1] a.i, PPR, 2017)

Scenic Spots

Equipped scenic spots

Scenic spots with filtered access

Paths of landscape and environmental interest  
(art. 30 [1] a.i, PPR, 2017)

Connection and crossing paths

Internal paths

Paths of slow fruition

Scenic routes  
(art. 30 [1] a.ii, PPR, 2017)

Good panoramcity

High panoramcity

Visual fulcrums of the built environment  
(art. 30 [1] a.i, PPR, 2017)

At sovrilocal scale isolated

At local scale

Visual fulcrums of the natural environment  
(art. 30 [1] a.i, PPR, 2017)

At sovrilocal scale

Visual connections  
(art. 30 [3] e, PPR, 2017)

Intervisibility

Focal views

Focal views on off-map elements

Wide panorama

Critical factors and visual detraction  
(art. 41 [2], PPR, 2017)

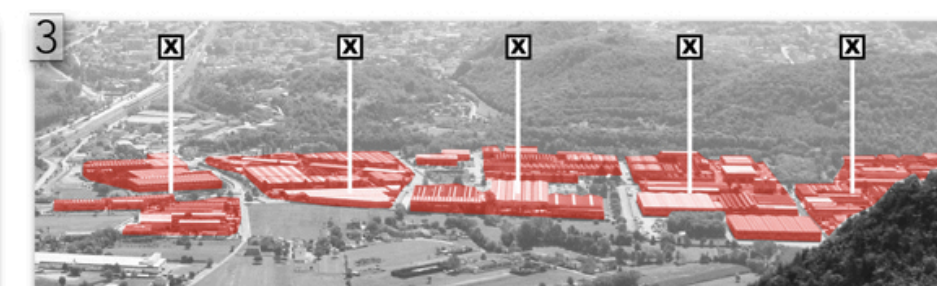
Punctual intrusion

Punctual intrusion with high visibility

Punctual degradation

Others components

Landscape profiles: Skyline and crests  
(art.30 [1] b.ii, PPR, 2017)



Bertassi plant



Visual shielding



# PROJECT ACTIONS

**1** Retraining of the consecutive area of the former Valle quarry maintaining its identity character

**2** Restoration of the former Sales-Cis quarry located in the eastern part of the Pырchirian mountain

**3** Mitigation of industrial plants resulting as visual dedraction elements

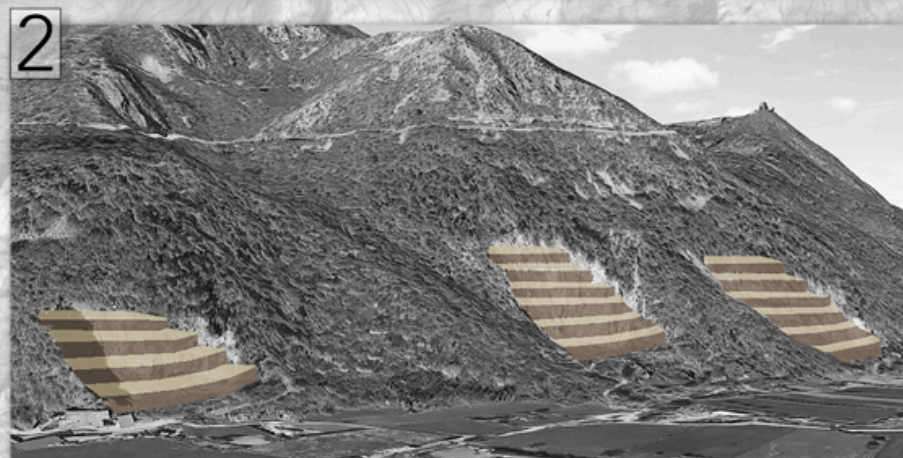
**4** Intervisibility enhancement between Sacra di San Michele and the village of Celle

**5** Ensure a direct connection of slow mobility between the two sides putting historical emergencies and panoramic points into the system

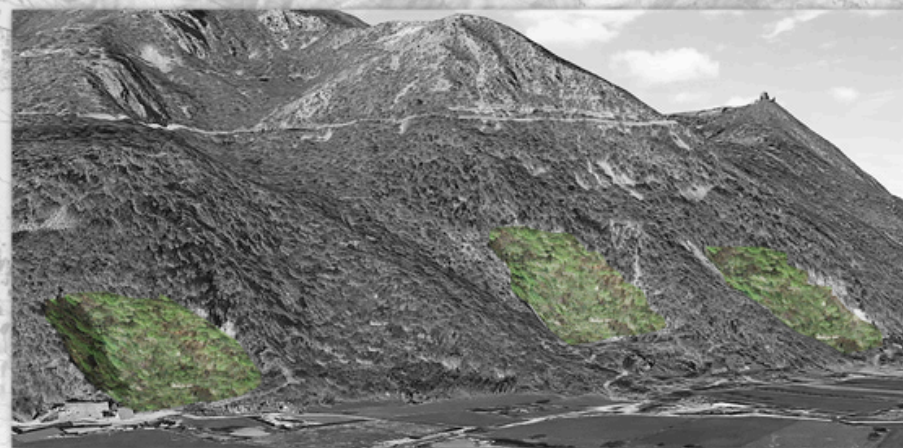
**6** Mitigation of hydraulic risk and prevention of forest fires



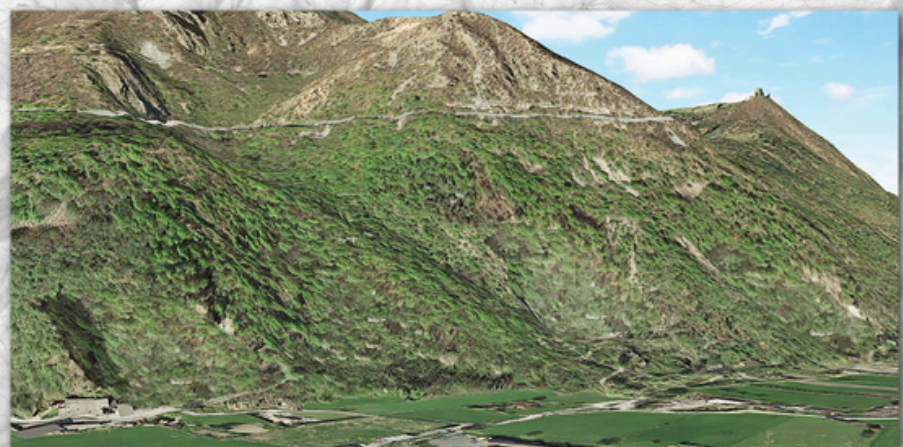
Greenway on a disused railway bridge



Morphological modelling



Naturalization



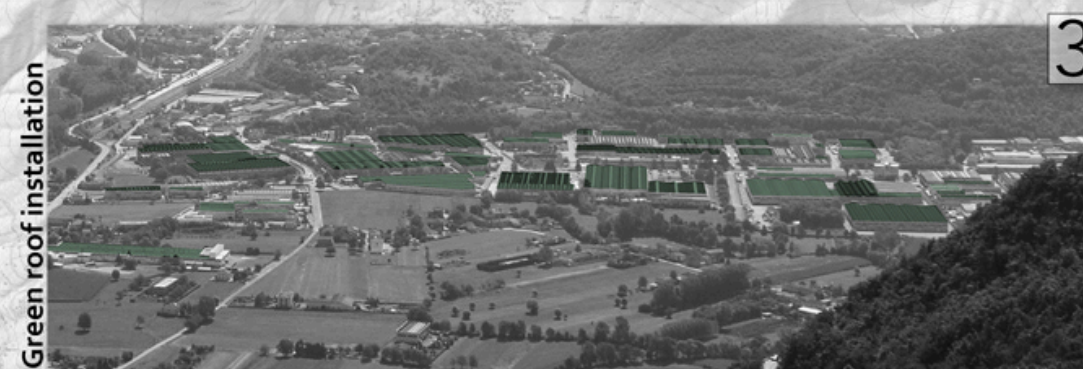
Landscape insertion



Green roof installation



Landscape insertion



Green roof installation



Landscape insertion



Visual Opening



Equipped scenic spot

10