

Country / City

University / School

Academic year

Title of the project

Authors

SPAIN

POLYTECHNICAL UNIVERSITY OF CATALONIA

2016

IF I COULD CHOOSE MY LANDSCAPE....

LIDIA CARRILLO PARRA





PERFORMATIVE NATURE

Barcelona International Landscape Architecture Biennial

September 2018 **Barcelona**

SCHOOL PRIZE

X International Landscape Architecture Biennial

Máster d'Arquitectura del Paisatge -DUOT - UPC

ETSAB- Escola Tècnica Superior

d'Arquitectura de Barcelona

Avenida Diagonal, 649 piso 5

08028 Barcelona-Spain

TECHNICAL DOSSIER

Title of the project	IF I COULD CHOOSE MY LANDSCAPE....
Authors	LIDIA CARRILLO PARRA.
Title of the course	LANDSCAPE DESIGN STUDIO FINAL .
Academic year	2016
Teaching Staff	ANNA ZAHONERO · IOANNA SPANOU
Department/Section/Program of belonging	MBLANDARCH. MASTER BARCELONA IN LANDSCAPE ARCHITECTURE. DEPARTMENT OF URBANISM AND REGIONAL PLANNING
University/School	POLYTECHNICAL UNIVERSITY OF CATALONIA

Written statement, short description of the project in English, no more than 250 words

This proposal was developed in Viladecans' municipality, Barcelona. The main challenge was to be able to adjust a turistic resort into an agricultural and deltaic landscape of great ecological value. The first strategie persued the connection of Barcelona with the new resort; the second seeks to promote tourism, creating different focus of attraction. The last strategy consists on generating a dispersion system of the touristic activity in the Delta increasing the supply of activities and itineraries. The masterplan proposes an extension of the pine forest within the tourist resort as protection against infrastructures, continuing the exisiting Delta pattern and guiding the access to the beach. The Agricultural system is maintained inside the new complex as a productive and leisure landscape. The two existing wetlands surrounding the complex are connected through the central space of the resort which is a dry wetland fostering active tourism. What would the resort be like if I could choose the landscape to look out the window? The pine tree reproduces the existing pattern along the entire edge of the Delta and disintegrates once it enters the resort. The riverside vegetation marks the visual limits and closes each unit as a room. The dispersion between the modules invites visitors to enjoy each landscape unit without interference from another nearby block. The proposal would finally be built up over time. Depending on the turistical success, the resort can grow as a living organism following the pattern of the landscape it belongs.

For further information

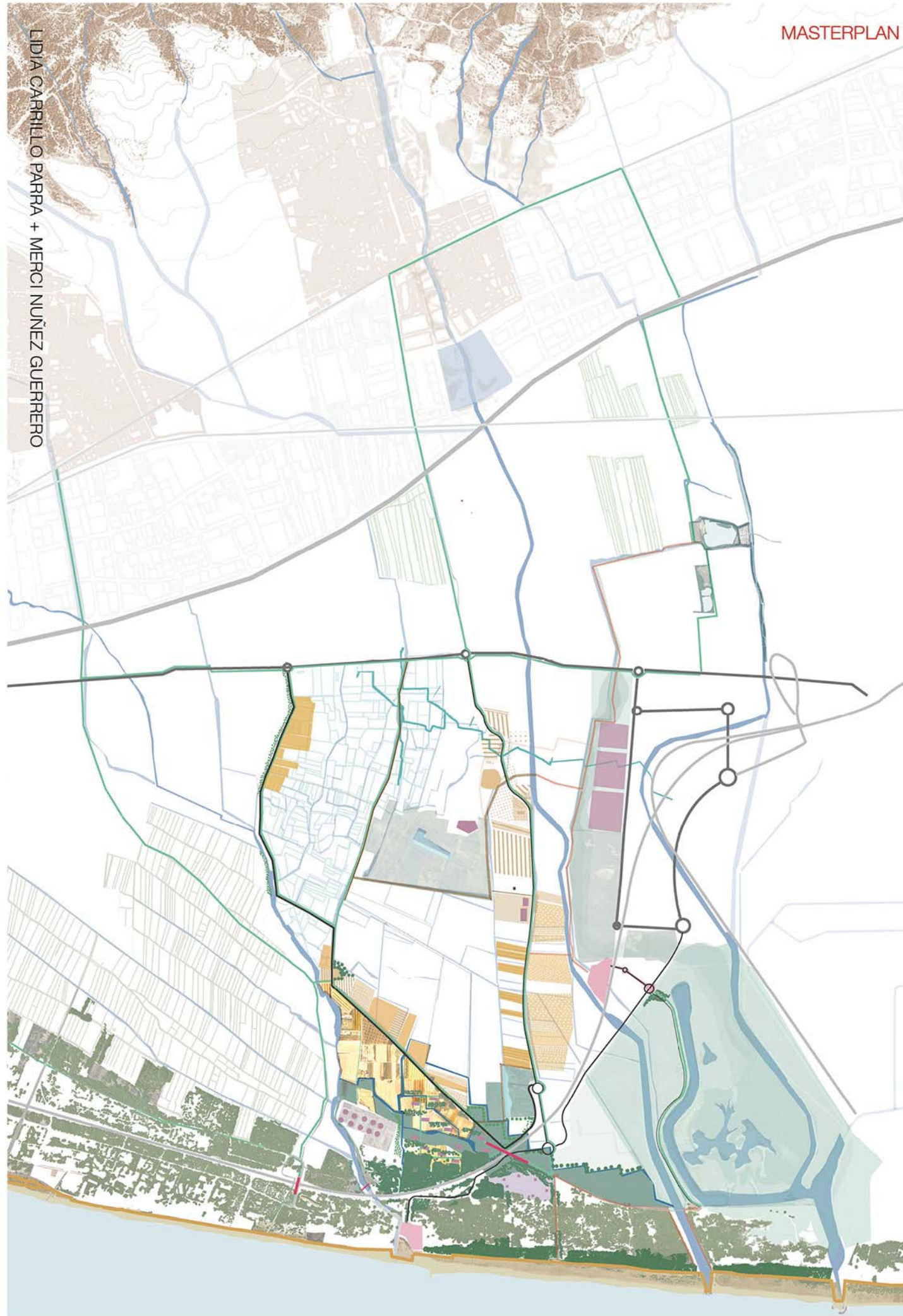
Máster d'Arquitectura del Paisatge -DUOT - UPC

T: + 34 93 401 64 11 / +34 93 552 0842

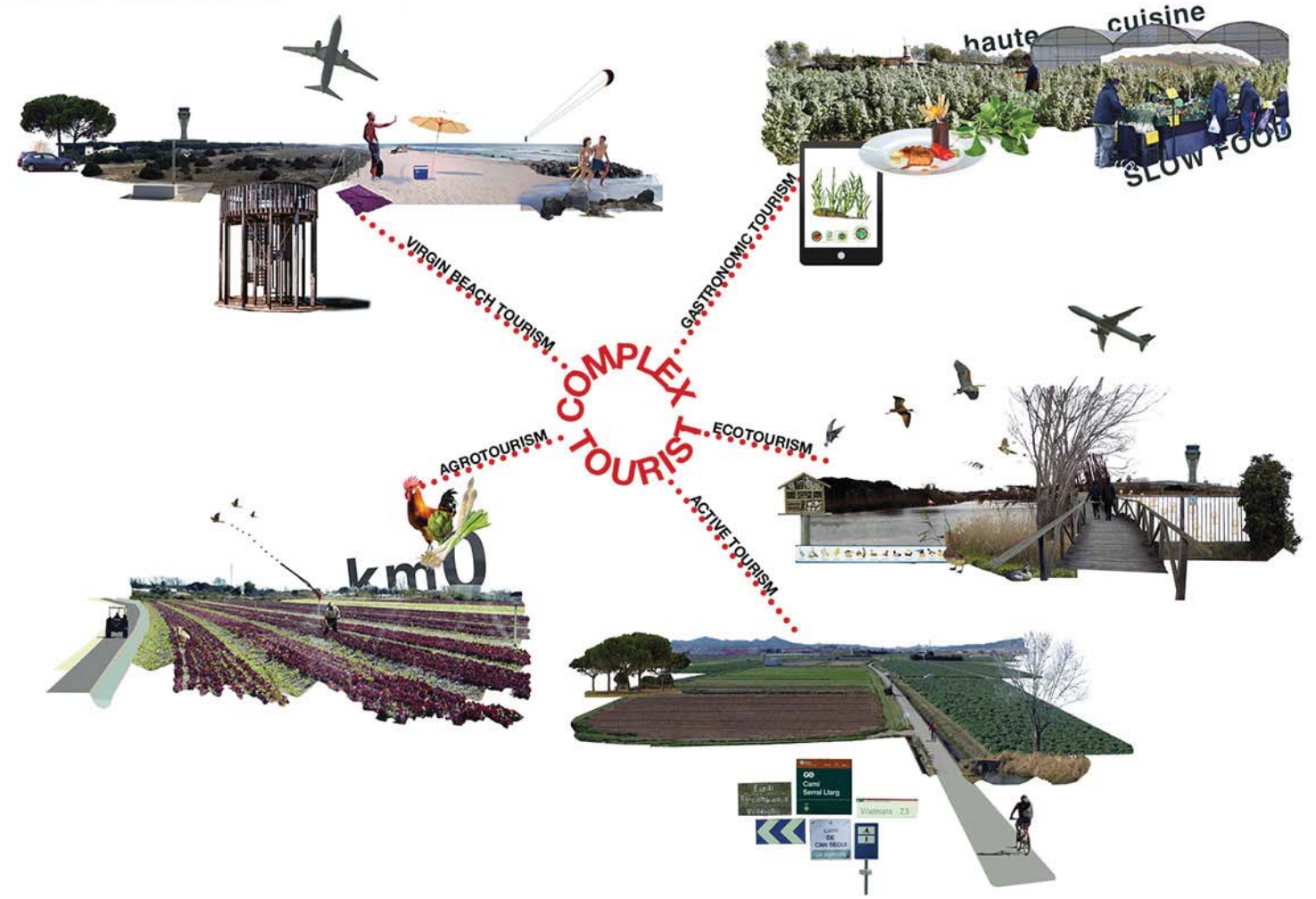
Contact via email at: biennial.paisatge@upc.edu

Consult the web page <http://landscape.coac.net/>

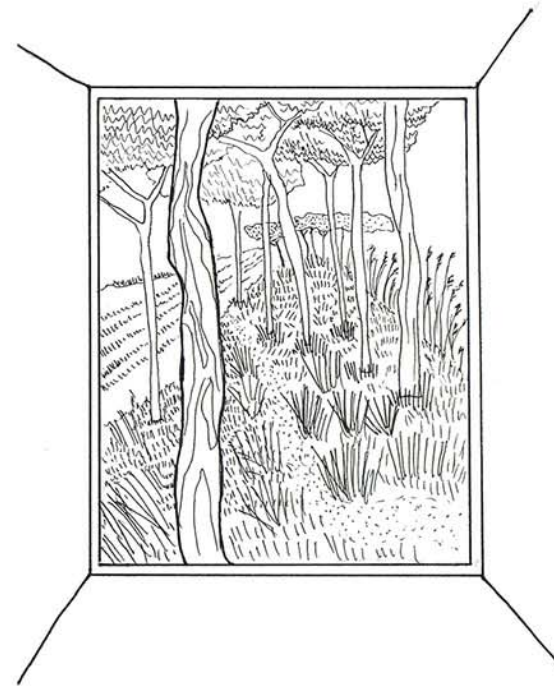
MASTERPLAN



CONCEPTUAL DIAGRAMS



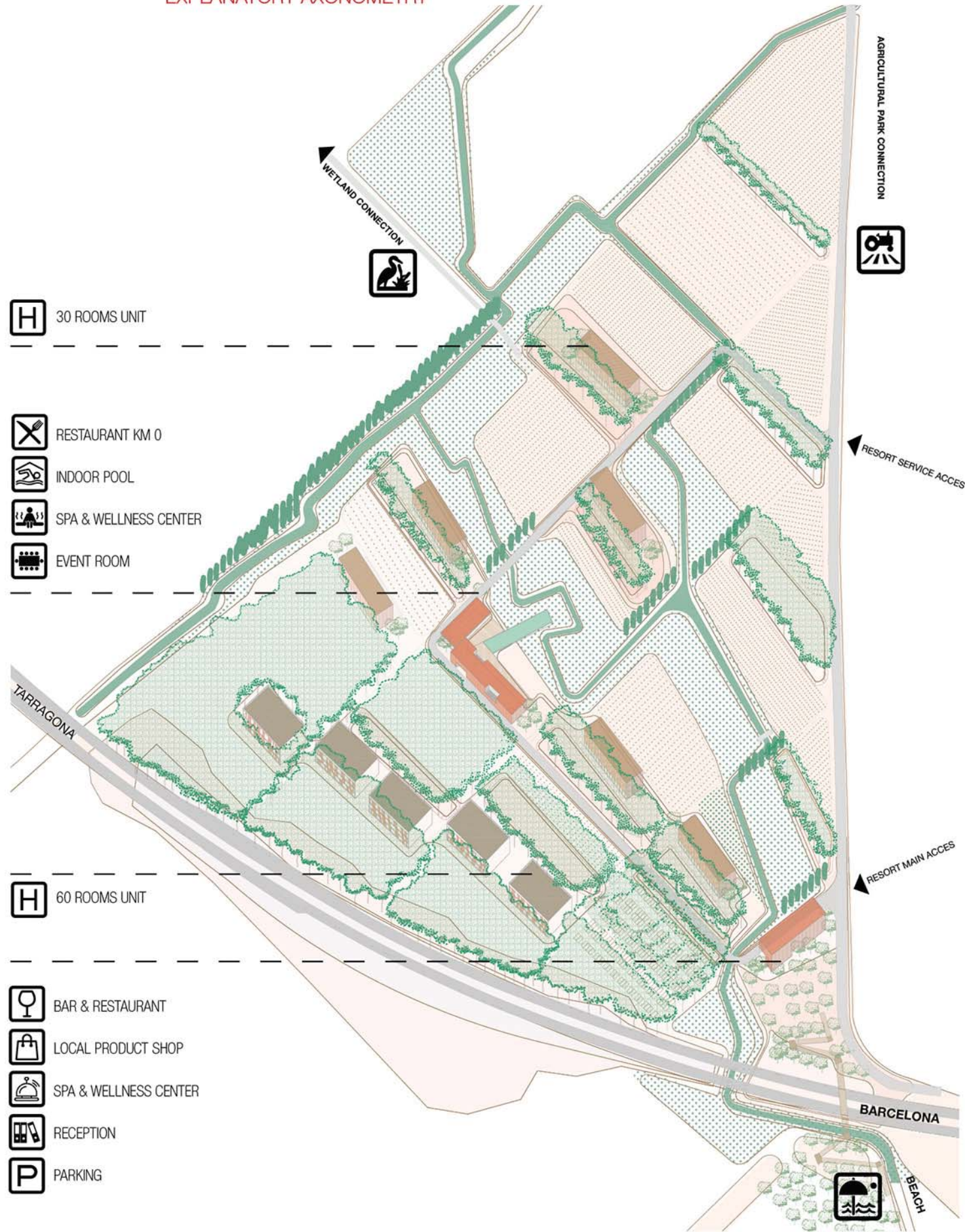
VIEW TO THE PINE TREE FOREST



VIEW TO THE DRY WETLAND



EXPLANATORY AXONOMETRY



TIME EVOLUTION



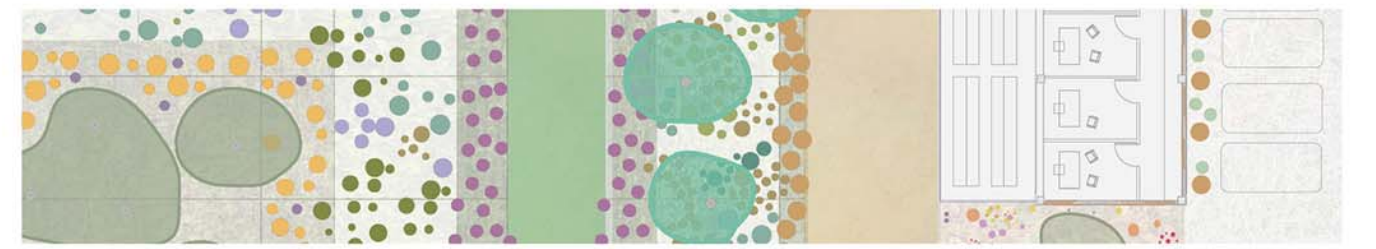
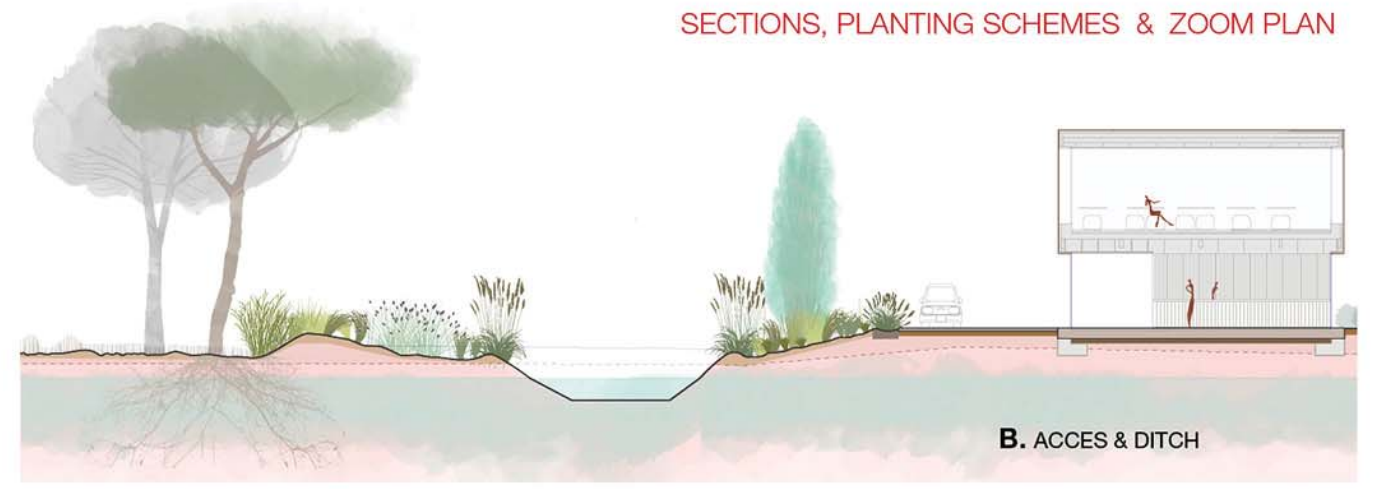
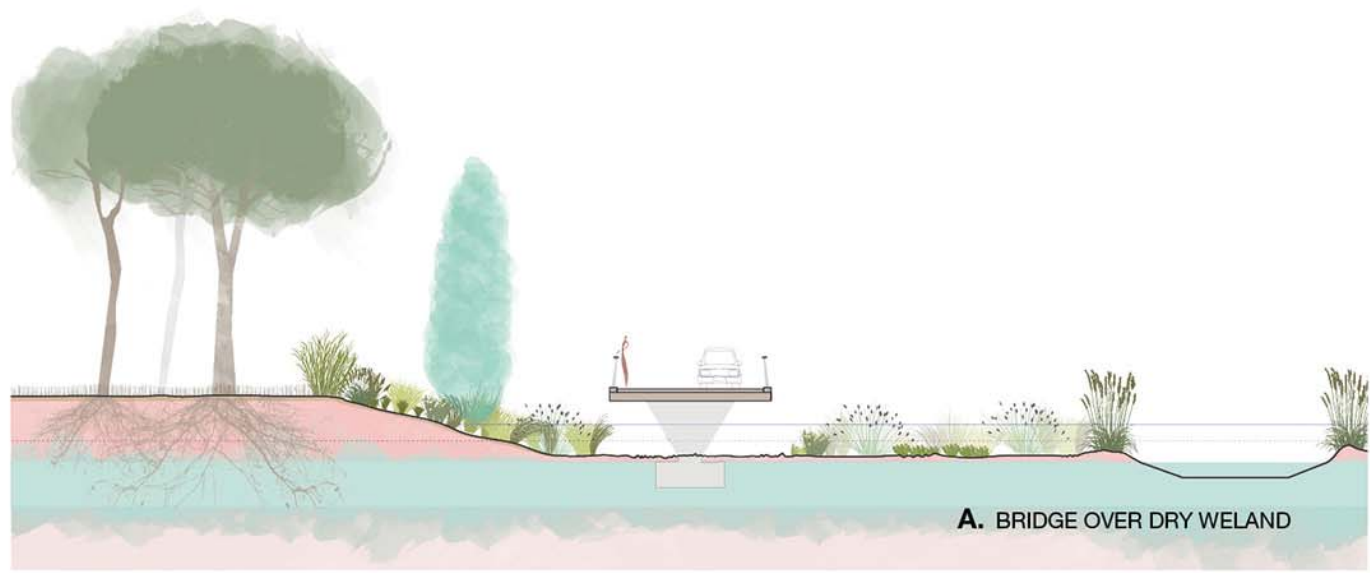
PHASE 3
15 YEARS
RENOVATION MULCH
THINNING DENSE PINE FOREST
SHRUBS REPLACEMENT
REPLANTATION

PHASE 2
5 YEARS
THINNING
BUILDING & INSTALATIONS
FINAL PLANTATION
SEEDING
PAVIMENTATION

PHASE 1
2 YEARS
WETLAND EXCAVATION
DITCH AMPLIATION
DRAINAGE
SOIL SUPPLY
SOIL AMENDMENTS
LEVELLING & SETTLING
SEEDING & NURSERY PLANTING

PHASE 0
BUILDING DEMOLITION
FLOORING REMOVAL
GRABBING SCRUBS
INVASIVE PLANTS REMOVAL
HEALTHY PINE TREE MAINTENANCE





VIEW OVER THE DRY WETLAND

