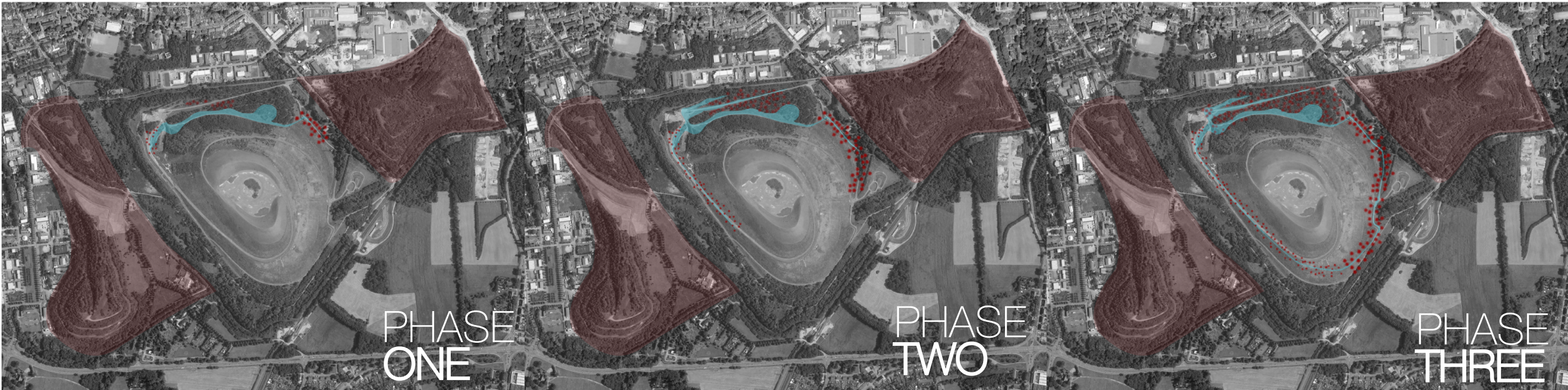
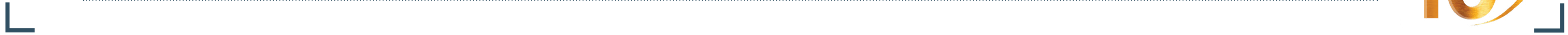




Landscape *in motion*



Country / City	Argentina / Santa Fe
University / School	Universidad Nacional del Litoral / Facultad de Arquitectura, Diseño y Urbanismo
Academic year	2017
Title of the project	Landscape in motion
Authors	Giménez, Anyelén - Pirola, Lourdes - Prehn, Ines - Senn, Dana - Sherafat, Daniyal





PERFORMATIVE NATURE

Barcelona International Landscape Architecture Biennial

September 2018 **Barcelona**

SCHOOL PRIZE

X International Landscape Architecture Biennial

Máster d'Arquitectura del Paisatge -DUOT - UPC

ETSAB- Escola Tècnica Superior

d'Arquitectura de Barcelona

Avenida Diagonal, 649 piso 5

08028 Barcelona-Spain

TECHNICAL DOSSIER

Title of the project	Landscape in motion
Authors	Giménez Anyelén, Pirola Lourdes, Prehn Ines, Senn Dana, Sherafat Daniyal
Title of the course	International Workshop Osnabrück 2017 - "Gladbeck _ Mottbruchhalde II"
Academic year	2017
Teaching Staff	Professors Miguel Vitale, Mónica Castillo, Alicia Follonier, Carlos Kakisu.
Department/Section/Program of belonging	Taller Proyectual en Morfología Urbana -TPMU
University/School	Universidad Nacional del Litoral / Facultad de Arquitectura, Diseño y Urbanismo

Description of the project

The approach to the project was based on a memoir of re-imagination of Mottbruchhalde. Which consist in a series of ecosystem addressing the question of time not only as a factor for landscape transformation but also as a living organism that leads the nature to grow, move, and feel.

After considering the Mottbruchhalde as place of sacred inmesity, it was decided to the develop the project in the "base camp". Firstly, the area is divided in three phases, consisting in a series of "small landscapes", interconnected through a path that allows the visitors to encounter different scenarios where vegetation is the main character.

In the wetland phase, the aim is to emphasize the importance of recycling the existent water and the climate regulation using a path that go through natural pools. For the woodland phase it is proposed its forestation with native species, generating a forest as a biological corridor that, through the exploration and experimentation of the nature, promotes the exchange of flora and fauna. Finally, in the pionner plant phase, its show the importance of the evolution of the vegetation through time around the coal waste mountain.

The main components of the landscape landmark and the industrial heritage lead the process of "landscape shape" into "timescape concept".

For further information

Máster d'Arquitectura del Paisatge -DUOT - UPC

T: + 34 93 401 64 11 / +34 93 552 0842

Contact via email at: biennial.paisatge@upc.edu

Consult the web page <http://landscape.coac.net/>

LOCATION

Gladbeck city is located in the northern Ruhr area, has a surface area of approximately 36 km², 76000 inhabitants distributed among 10 city districts.



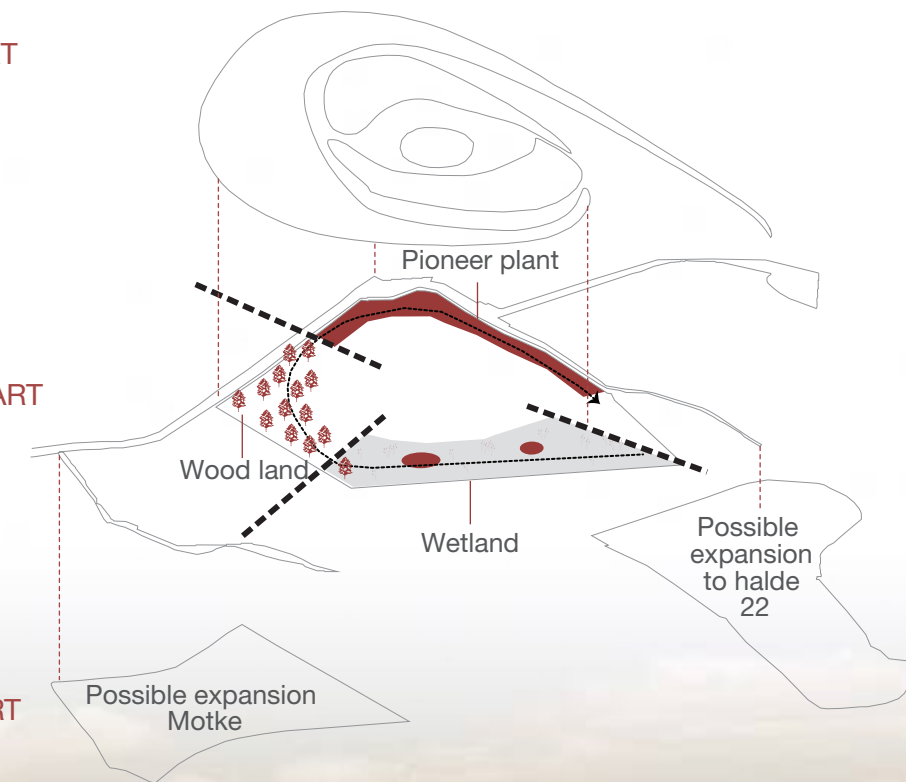
With industrialization at the end of 19th century a fundamental change began to occur in the landscape, changing the natural scenery.

GENERAL PROPOSAL LAYER SCHEME

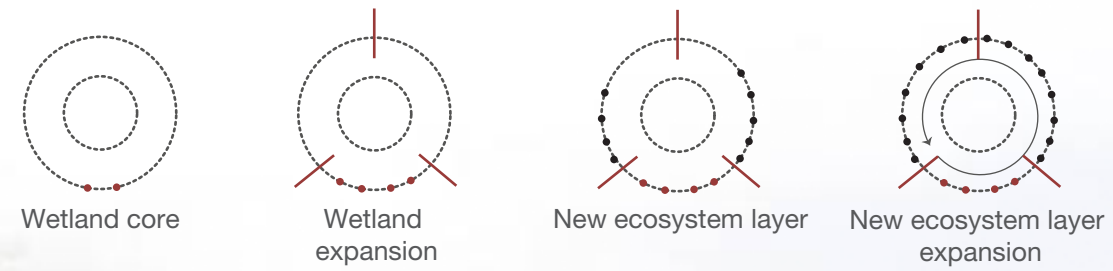
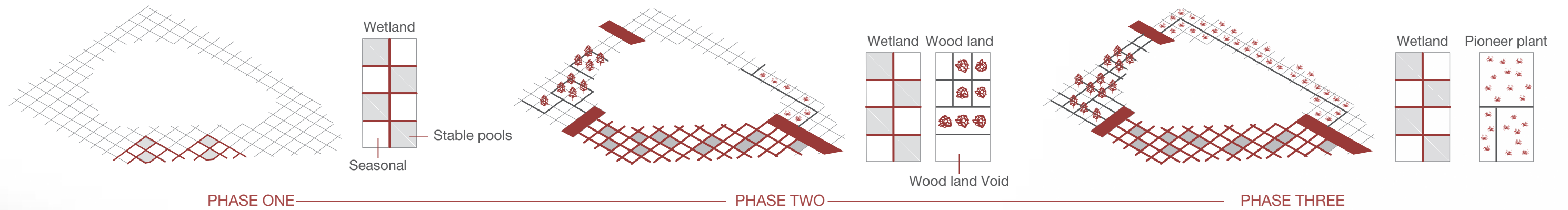
TOP PART

MIDDEL PART

SIDE PART

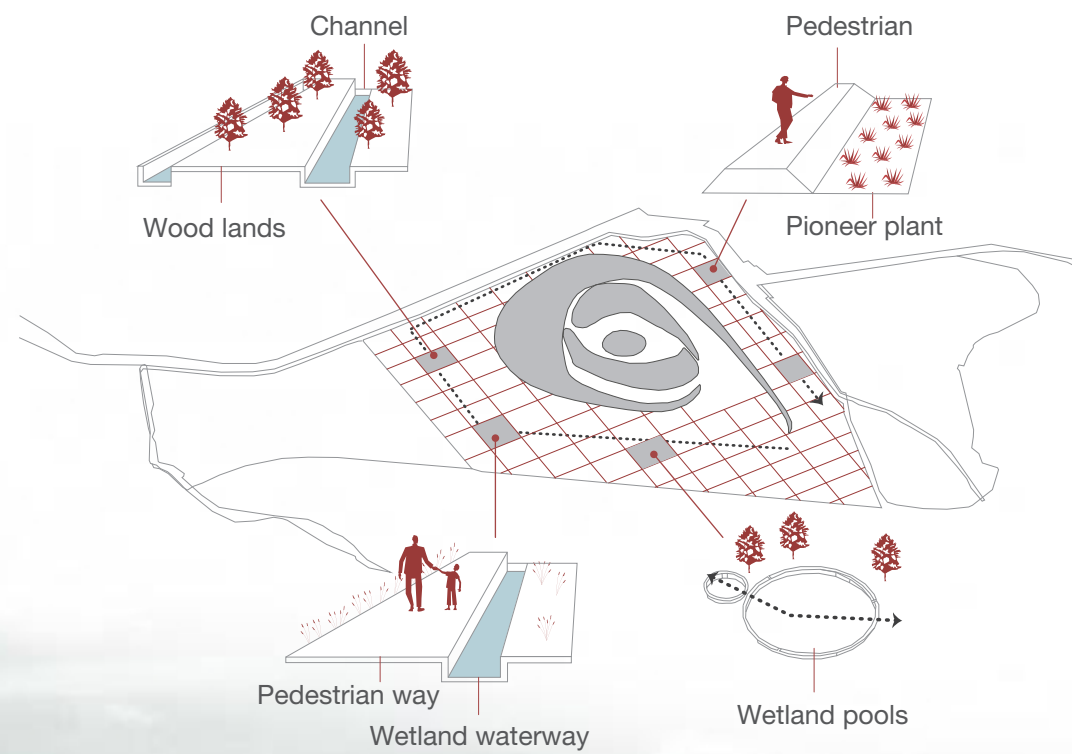


EXPANTION SCHEME

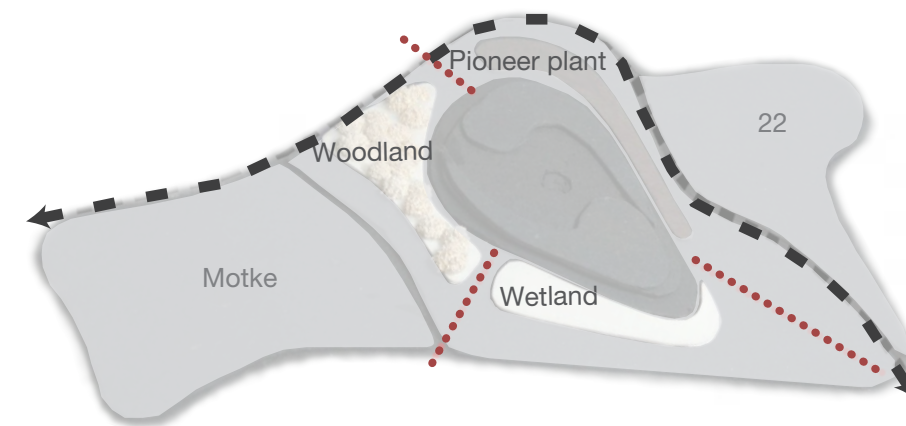


PHASE TWO / Wood land

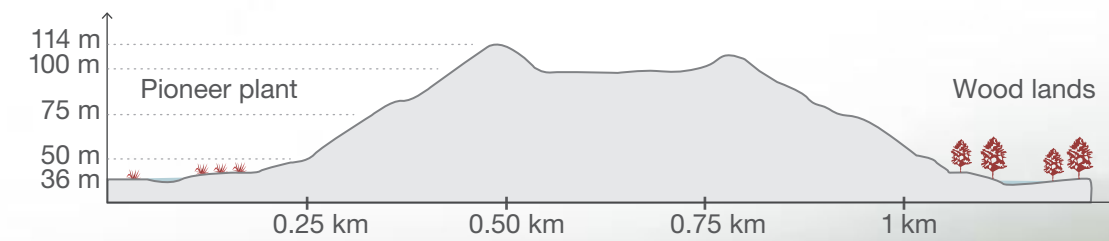
INTERVENTIONS



CONCEPTUAL MODEL



MOTTBRUCHHALDE ELEVATION



PHASE THREE / Pioneer plant