



Country / City Italy, Faenza (Ravenna)  
University / School Alma Mater Studiorum University of Bologna / "Ornamental plants and landscape protection" Degree programme  
Academic year 2016-2017  
Title of the project The cloister of the Municipal Library Manfrediana of Faenza. A redevelopment proposal  
Authors Leonardo Ercolani





# PERFORMATIVE NATURE

Barcelona International Landscape Architecture Biennial

September 2018 **Barcelona**

SCHOOL PRIZE

X International Landscape Architecture Biennial

**Máster d'Arquitectura del Paisatge -DUOT - UPC**

ETSAB- Escola Tècnica Superior

d'Arquitectura de Barcelona

Avenida Diagonal, 649 piso 5

08028 Barcelona-Spain

## TECHNICAL DOSSIER

Title of the project	The cloister of the Municipal Library Manfrediana of Faenza. A redevelopment proposal
Authors	Leonardo Ercolani
Title of the course	Three-year thesis
Academic year	2016-2017
Teaching Staff	Anna Costa, Moreno Daini
Department/Section/Program of belonging	'Ornamental plants and landscape protection' Degree programme
University/School	Alma Mater Studiorum University of Bologna

Written statement, short description of the project in English, no more than 250 words

The project proposes the redevelopment of the cloister of the Manfrediana Municipal Library in Faenza; this will and necessity arise from the total state of abandonment in which space is located today, which prevents the use of one of the city's most beautiful cloisters.

The design idea arises from the study of the characteristics of the medieval cloister and reinterprets them in a modern key, combining inert materials and perennial herbaceous and designing a space that is totally usable and pleasant to live. The design of the ground is inspired by the geometry and rhythm of the existing side galleries, designing a checkered floor highlighted by the use of Luserna stone in two different shades of grey. This regular structure is interrupted by the insertion of a new curvilinear figure that draws five flower beds each of which has different dimensions to allow the total usability of the space on all sides of the galleries. In the flower beds are planted perennial herbaceous from shade: *Iris japonica*, *Liriope muscari* 'Manroe White' and *Heuchera* 'Peach Crisp' respectively in the flower beds 2 and 5, 4, 3; in the flower bed 1, which has larger dimensions, will be planted *Dryopteris erythrosora*, *Hakonekloa macra* 'Aureola' and *Heachera* 'Havana' creating a play of different heights, colours and textures.

The LED lighting will be inserted inside the flowerbeds, to underline the curvilinear design. The same design is also taken from the furniture elements, of circular form in cement, positioned in different points of the cloister space.

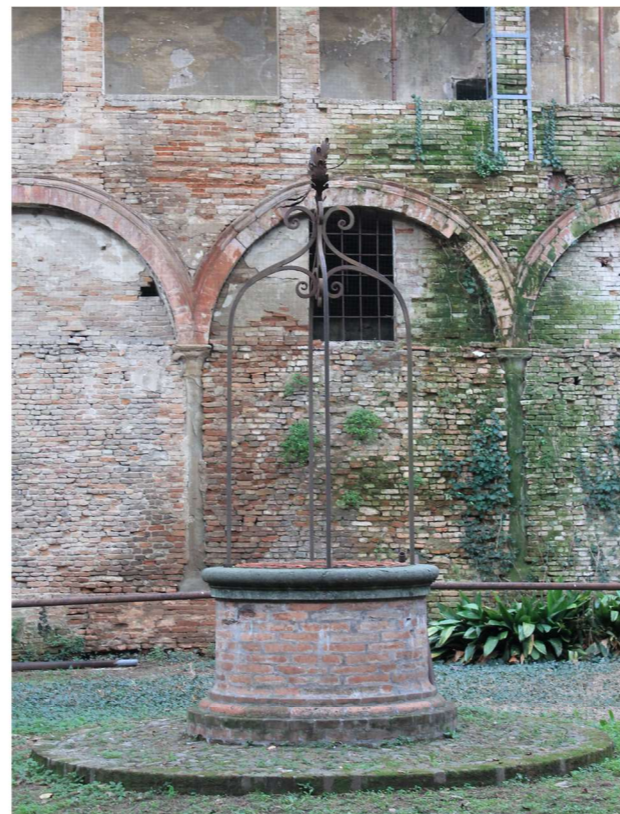
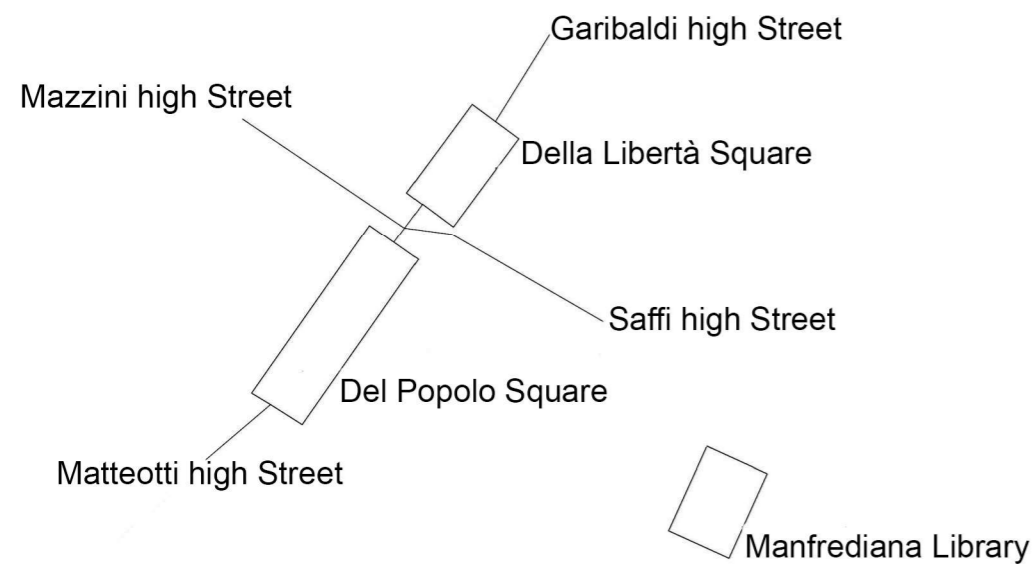
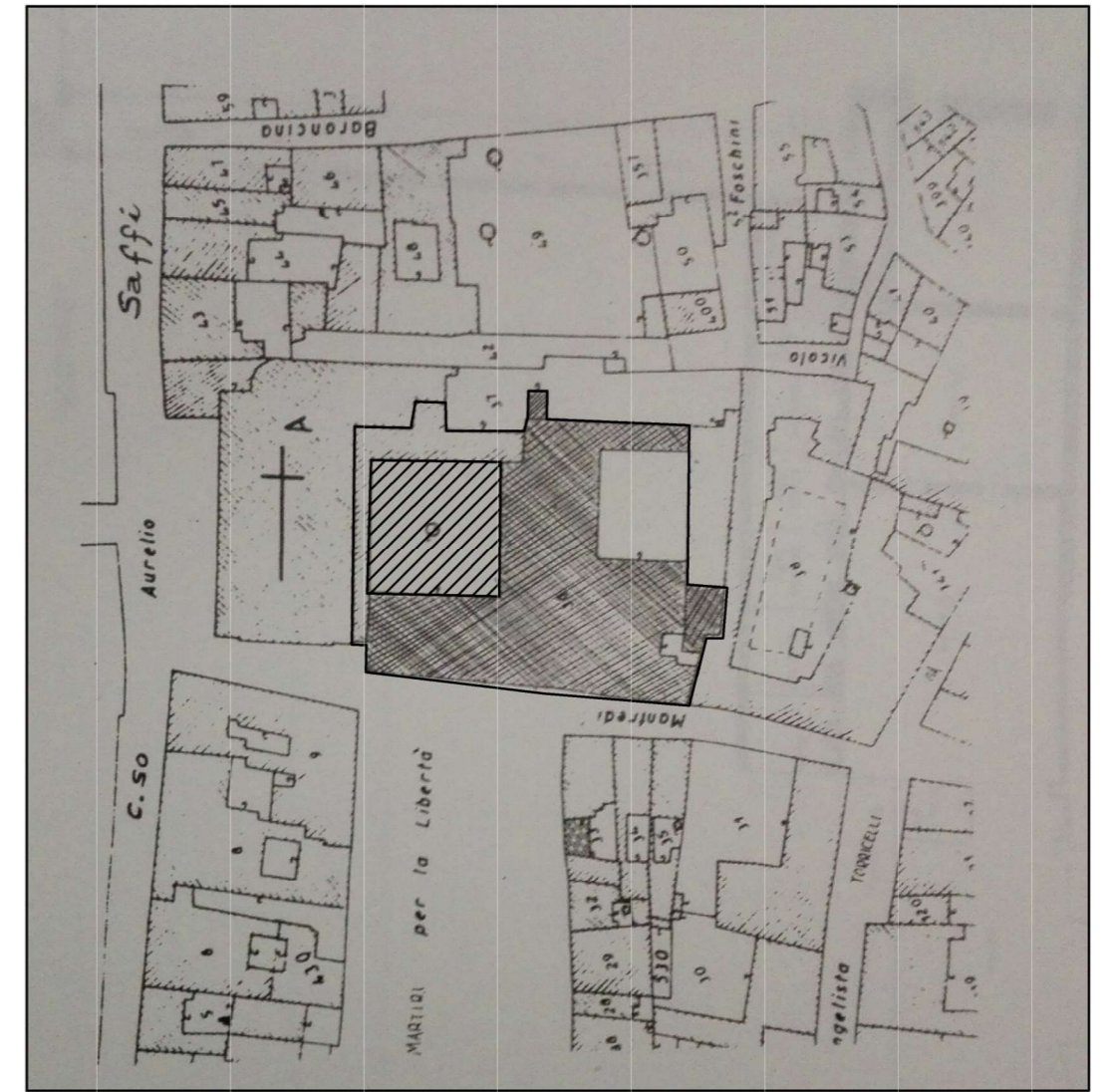
For further information

**Máster d'Arquitectura del Paisatge -DUOT - UPC**

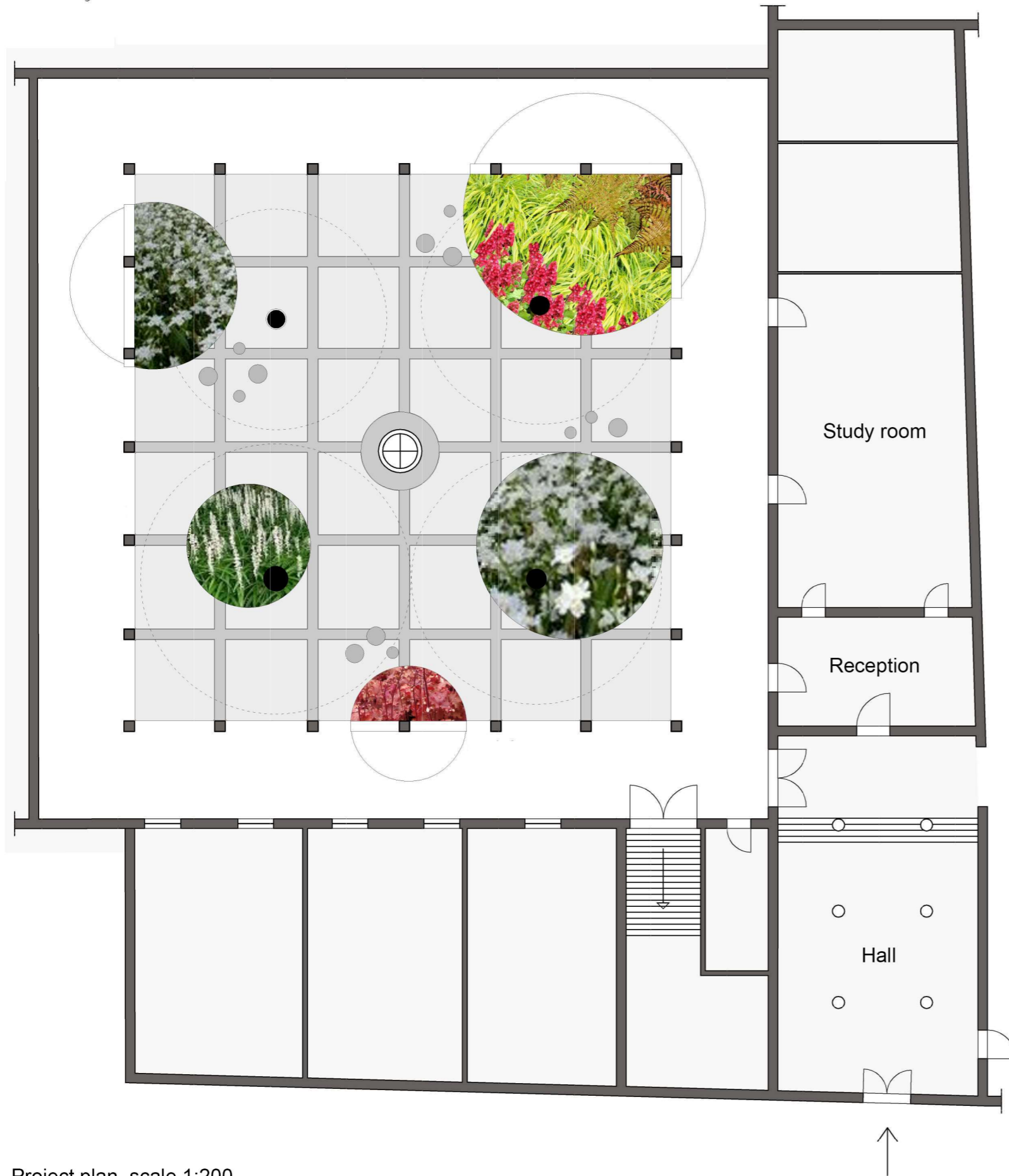
T: + 34 93 401 64 11 / +34 93 552 0842

Contact via email at: [biennial.paisatge@upc.edu](mailto:biennial.paisatge@upc.edu)

Consult the web page <http://landscape.coac.net/>

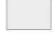






The Manfrediana library is located in the center of the city of Faenza, in Manfredi Street. The cloister is part of the convent complex that dates back to the fourteenth century and is characterized by a geometric layout with a central well.



Project plan, scale 1:200

## Materials legend

-  Light Luserna stone
-  Dark Luserna stone
-  Cement seats of Lovacement; diameter 50 and 78 cm
-  diameter 50 and 78 cm
-  Corten steel profile

## Vegetation legend

Flower bed with *Dryopteris erythrosora*;  
*Hakonechloa macra* 'Aureola';  
*Heuchera* 'Havana'



Flower bed with *Iris japonica*



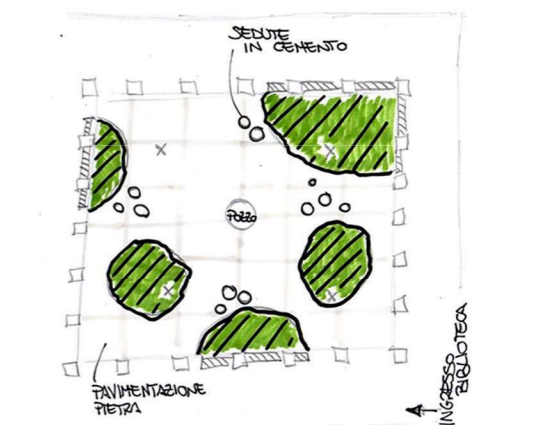
Flower bed with *Heuchera* 'Peach Crisp'

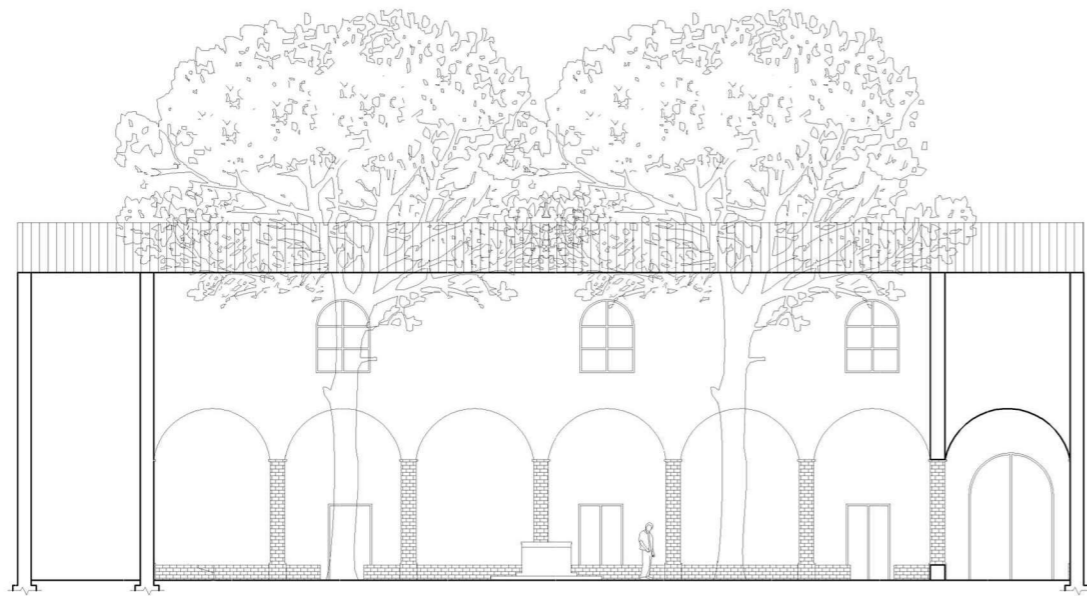


Flower bed with *Liriope muscari* 'Manroe Whyte'

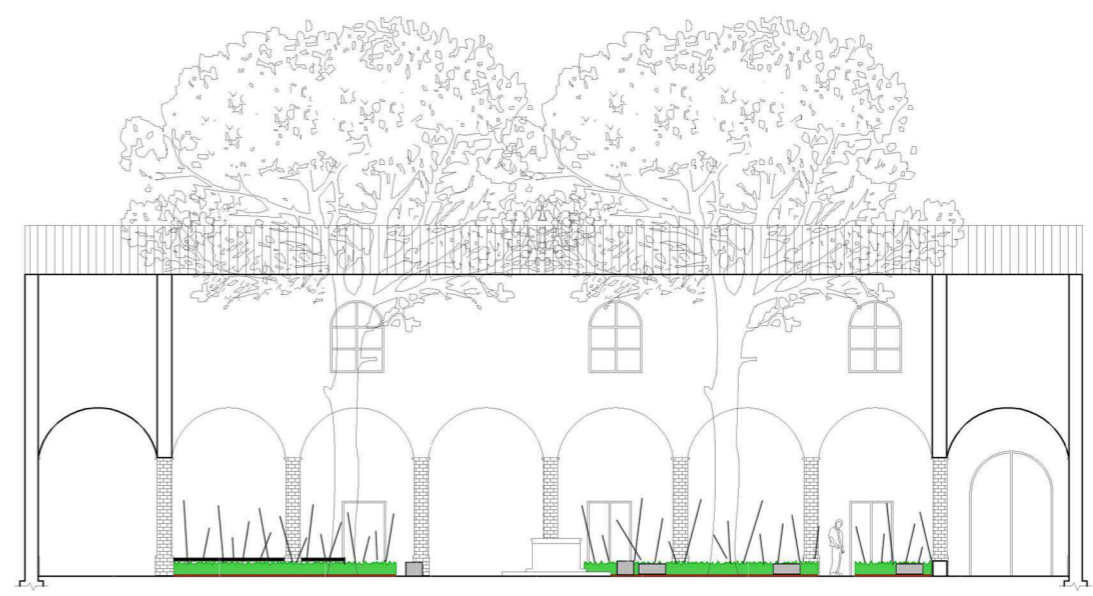


## Project diagrams





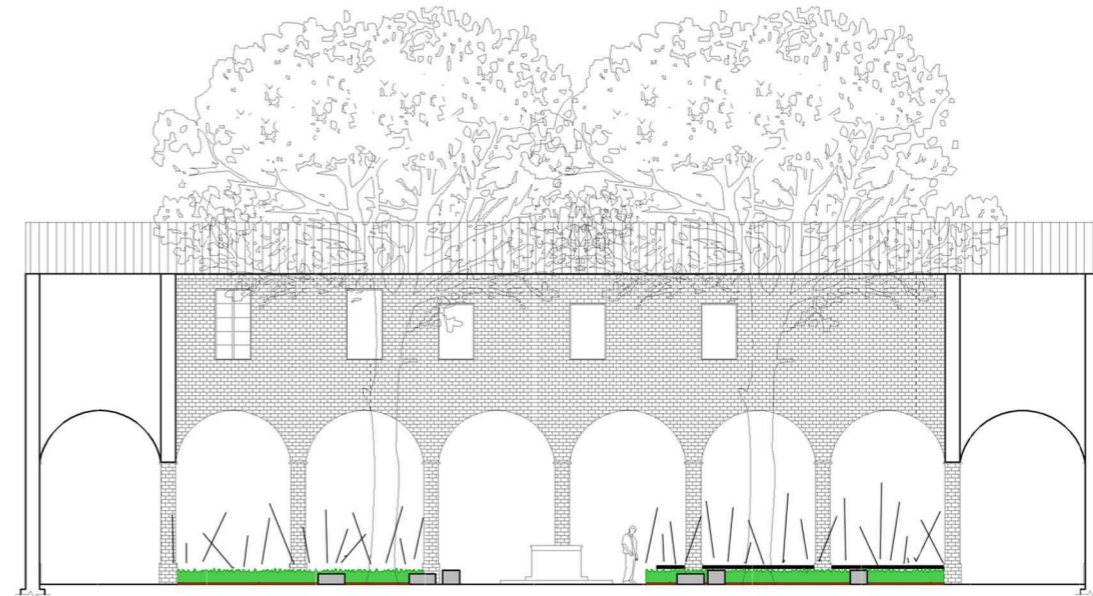
Section South, current situation, scale 1:200



Section South, project, scale 1:200



Section North, current situation, scale 1:200



Section North, project, scale 1:200



Current situation



Project sketch