



Country / City

University / School

Academic year

Title of the project

Authors

Italy

"Sapienza" University of Rome / School of Architecture

2016 / 2017

From the coast to the inland, Landscape Devices for the Nebrodi

Francesca Ciuppa





PERFORMATIVE NATURE

Barcelona International Landscape Architecture Biennial

September 2018 **Barcelona**

SCHOOL PRIZE

X International Landscape Architecture Biennial

Máster d'Arquitectura del Paisatge -DUOT - UPC

ETSAB- Escola Tècnica Superior

d'Arquitectura de Barcelona

Avenida Diagonal, 649 piso 5

08028 Barcelona-Spain

TECHNICAL DOSSIER

Title of the project From the coast to the inland, Landscape Devices for the Nebrodi
Authors Francesca Ciuppa
Title of the course Master's degree thesis on landscape architecture
Academic year 2016 / 2017
Teaching Staff Prof. Gianni Celestini
Department/Section/Program of belonging Department of Architecture and Project
University/School "Sapienza" University of Rome / School of Architecture

Written statement, short description of the project in English, no more than 250 words

The project aim is to experiment with landscape devices the reactivation of minor historic centers. The specific objective for Naso is the creation of a travel system and space infrastructure, which introduces new meaningful relationships through an updated reading of the territorial identity characters, defining a fruitful rhythm that accompanies perception. The route combines the historical, cultural, artistic, architectural heritage as well as the beautiful landscape perceptible by its morphology and geographical location. The pedestrian area is enhanced by repaving actions that emphasize the spatiality of the medieval road network. Infrastructural interventions like the design of Piazza Roma that defines Mather church public space, the design of minor squares and small open spaces along the route and the enhancement of the Porta Convento that testify the ancient city wall. Mobility strategies are identified with the creation of a parking garden that represents the exchange node and the beginning of the pedestrian system. A new redistribution of parking and transit restrictions in the historic center promote sustainable mobility with buses and electric bike inside. Strategies for slopes consolidation through reforestation and canalization of rainwater with collection points and natural runoff. Topographic modeling strategies in the southern slope characterized by active landslide processes, involves buildings demolition and the design of limits allowing contemplation and openness to the landscape.

For further information

Máster d'Arquitectura del Paisatge -DUOT - UPC

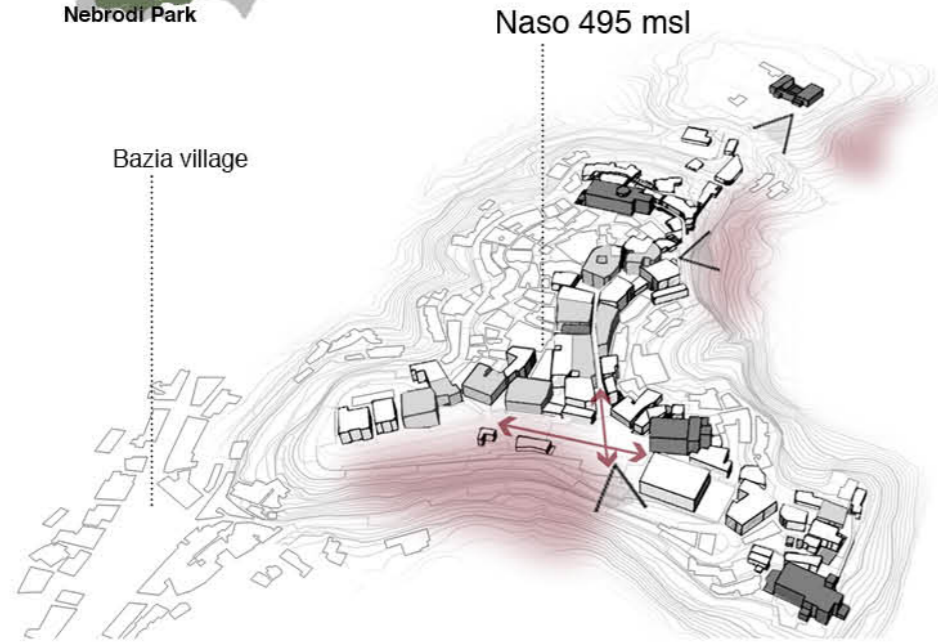
T: + 34 93 401 64 11 / +34 93 552 0842

Contact via email at: biennial.paisatge@upc.edu

Consult the web page <http://landscape.coac.net/>



Creation of a **tourist axis** linking the **Aeolian islands** and the **Nebrodi territory**, promoting the city of **Naso** for a **cultural and experiential tourism** through the **Albergo diffuso** model.



- Urban development
- Religious buildings
- Private buildings
- Landslide movements

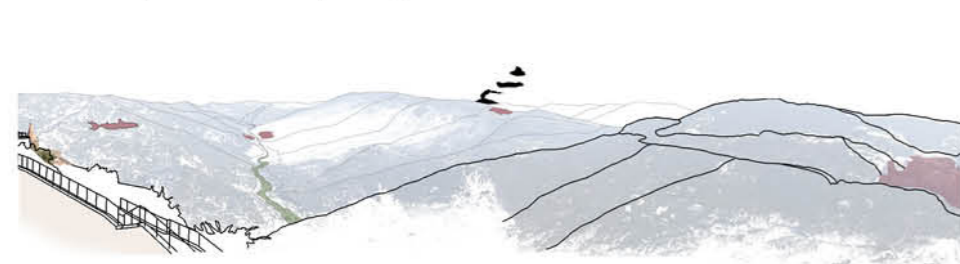
1 / Convento - Naso north view



2 / Belvedere - Aeolian islands

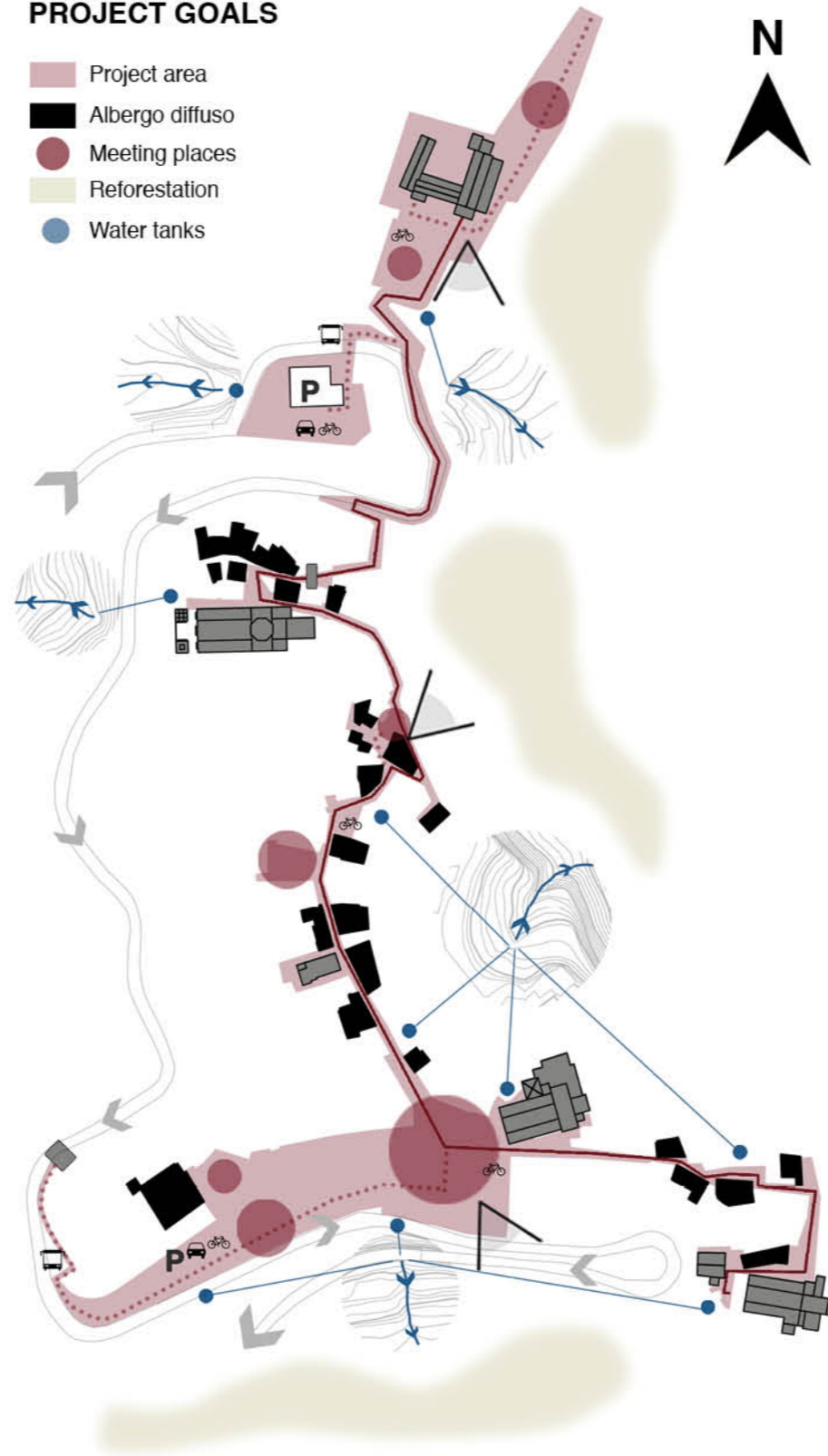


3 / Roma square - Nebrody valley and Etna



PROJECT GOALS

- Project area
- Albergo diffuso
- Meeting places
- Reforestation
- Water tanks

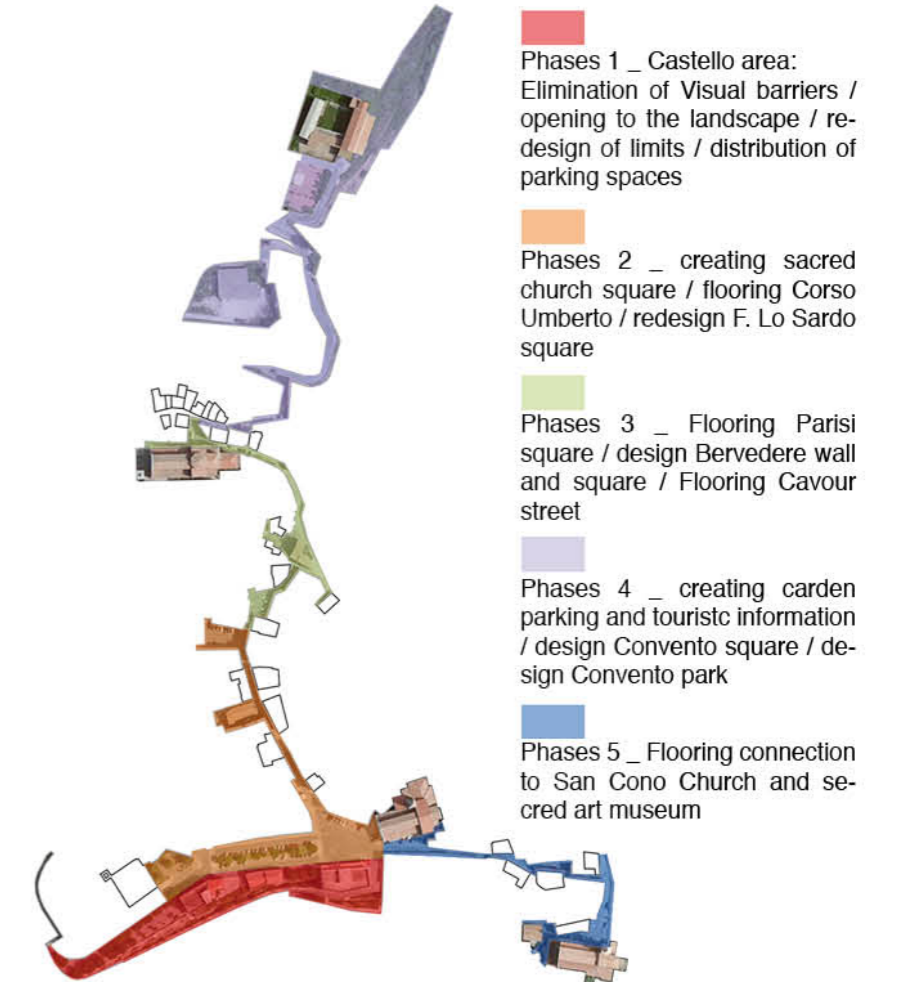


CONCEPT



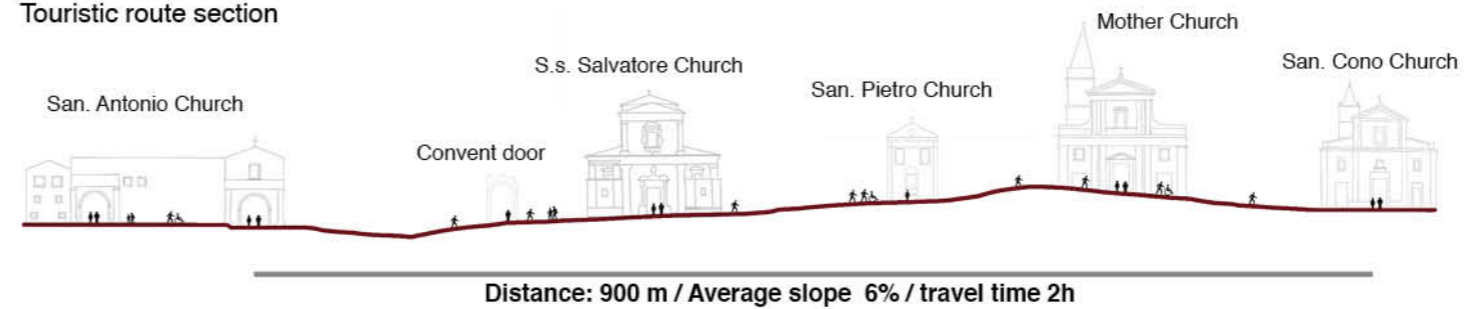
The physiognomy of the nose as an identity element that unites the historical, cultural, architectural and landscape heritage. The main goal is the creation of a system path and space infrastructure that introduces new meaning relations through a modernized reading of the identifying characteristics of the place, defining a fruition rhythm that accompanies the perception.

PROJECT PHASES



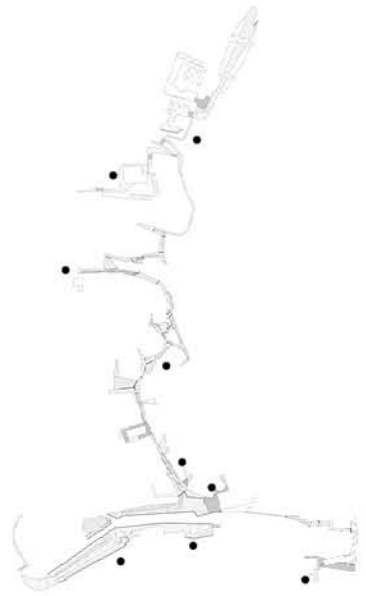
- Phases 1 _ Castello area: Elimination of Visual barriers / opening to the landscape / redesign of limits / distribution of parking spaces
- Phases 2 _ creating sacred church square / flooring Corso Umberto / redesign F. Lo Sardo square
- Phases 3 _ Flooring Parisi square / design Bervedere wall and square / Flooring Cavour street
- Phases 4 _ creating carden parking and touristic information / design Convento square / design Convento park
- Phases 5 _ Flooring connection to San Cono Church and sacred art museum

Touristic route section





- Sicily gray sandstone paving (30x60cm / 40x80cm) sp. 3cm
- Paving in quartz-arenitic ocher-colored stone (15x30cm / 30x60cm / 30x90cm / 50x100cm / 60x120cm) sp. 3cm
- Paving in San Marco Gray marble with medium gray and dark gray color sometimes characterized by white veins (30x60cm) sp 3cm
- Flooring in cement gray / light gray sp. 5cm with bush-hammered finish and resin treatment.



A system of drainage and accumulation of rainwater that connects to the project proposal drainage system.



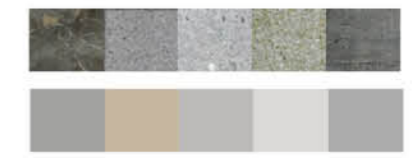
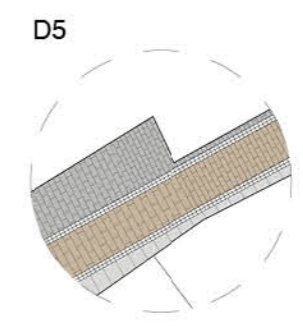
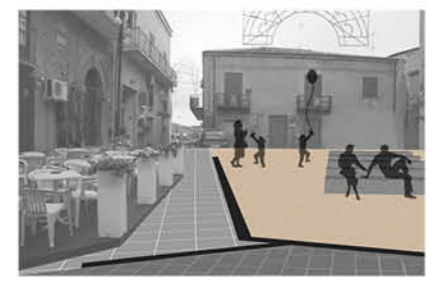
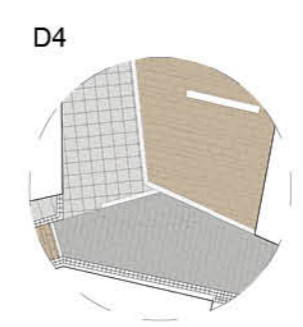
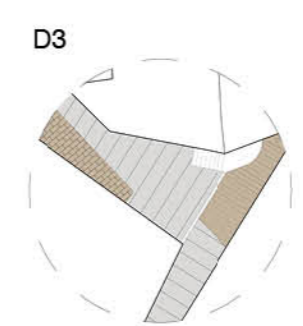
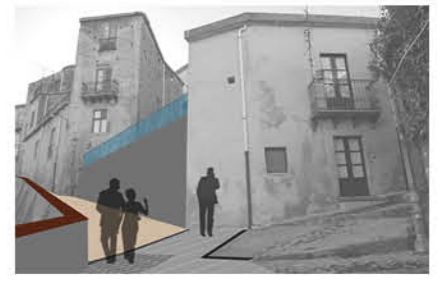
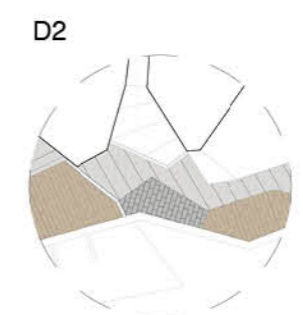
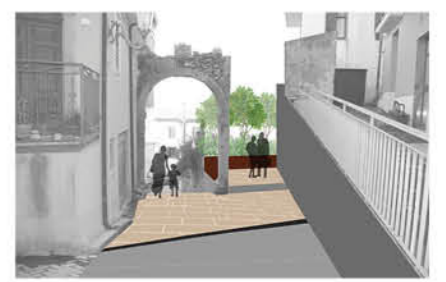
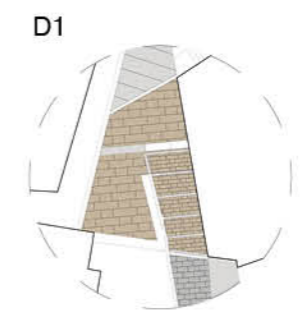
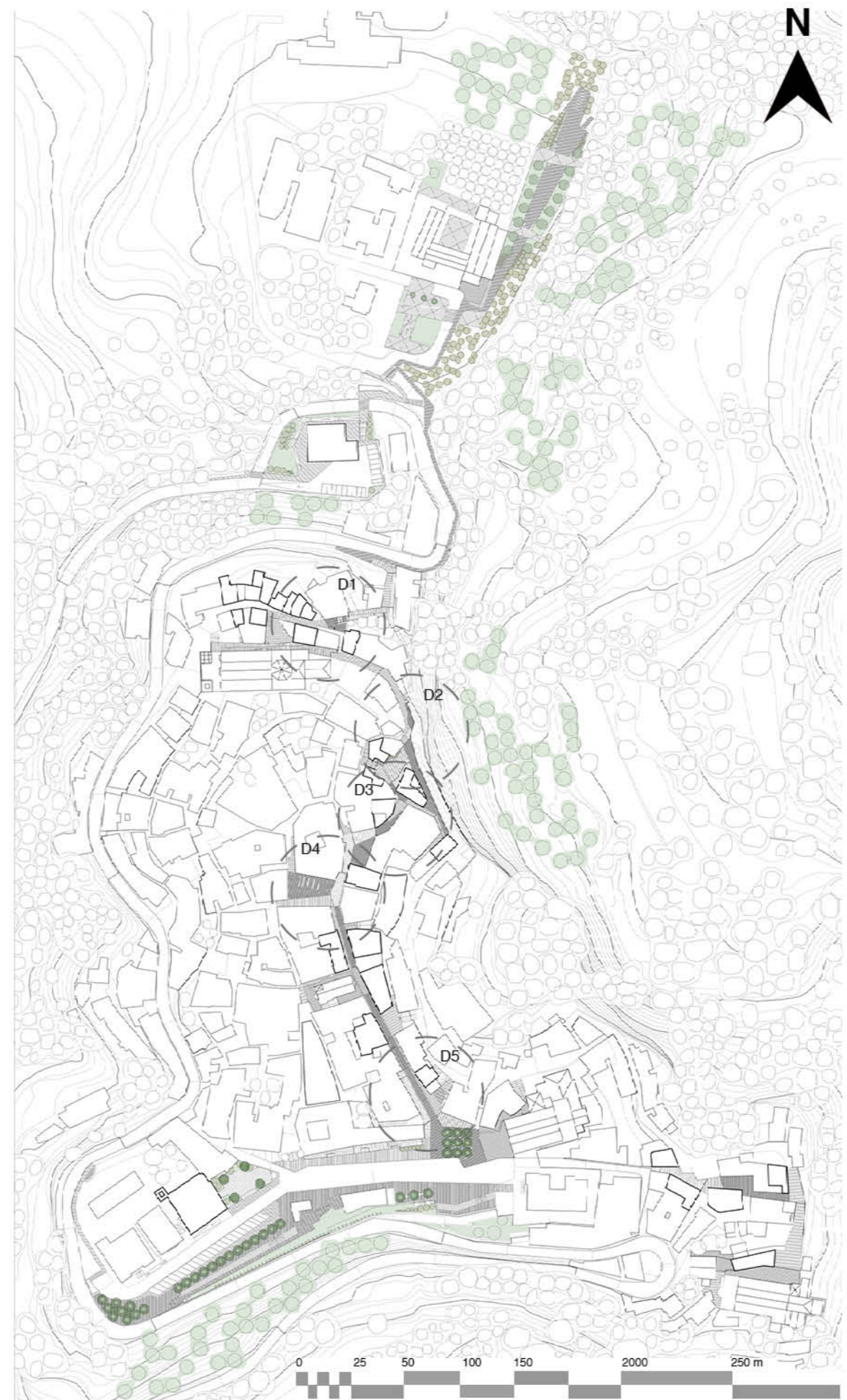
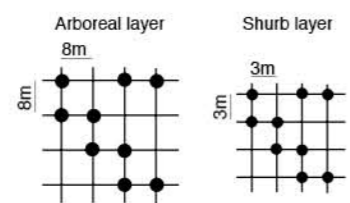
- Water tanks
- Rainwater drainage grids



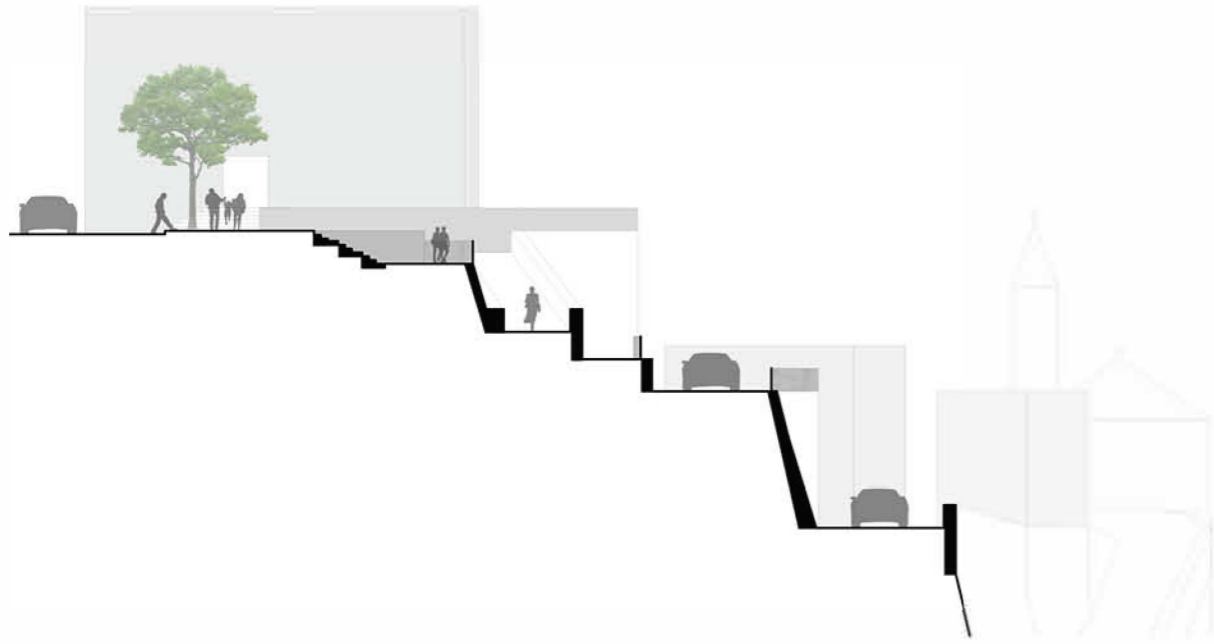
● Reforestation of the slopes
Downy oak fores (Quercus pubescens)

Roso sempervirentis - Quercetum pubescentis
 Veg. arborea: Quercus pubescens
 Veg. arbustiva: Spartium junceum
 Veg. erbacea: Bromus erectus e Osyris alba

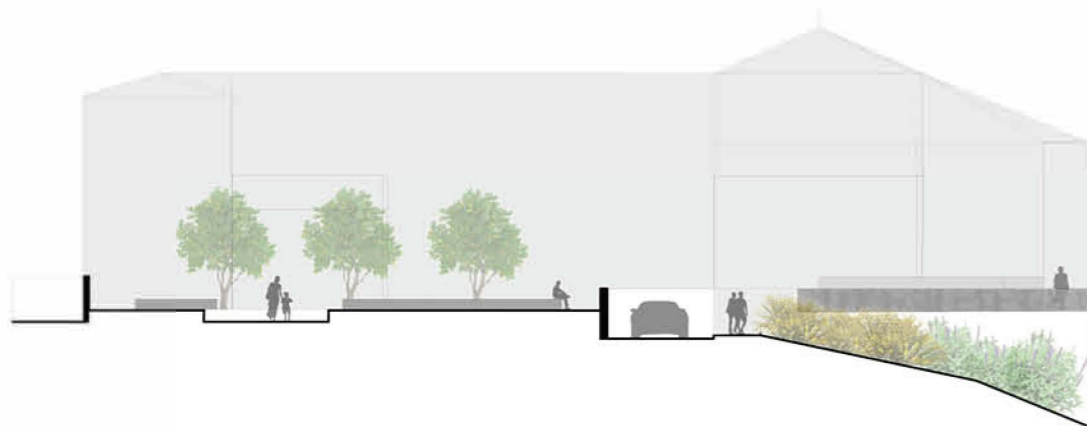
● Reforestation of the slopes
Mediterranean scrub and shrubland
 Macchia e gariga a oleastro (Olea europea L. var. Sylvestris) e Erica arborea.



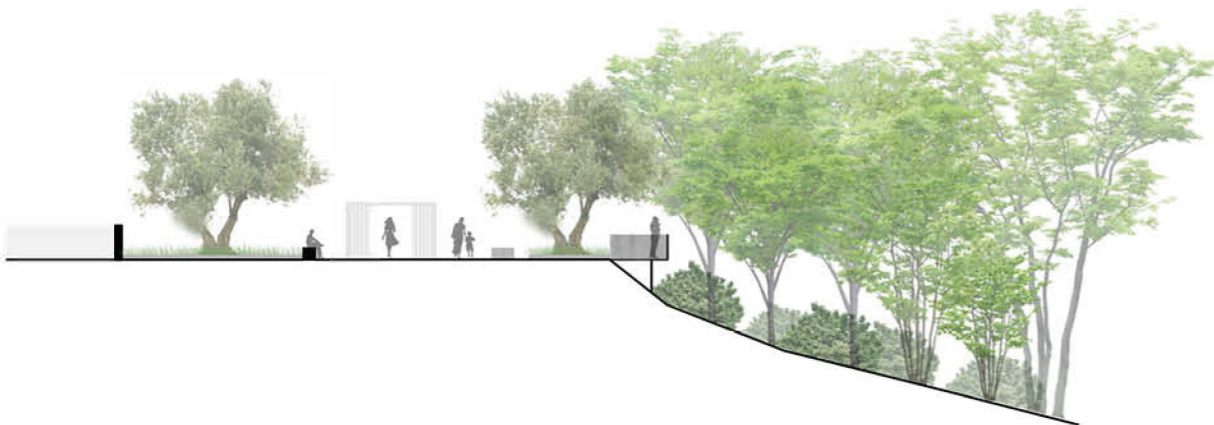
Section A - A' rap. 1:300



Section B - B' rap. 1:300



Section C - C' rap. 1:300



Navigator

