



MOUNT WEAWE WATER

algorithm construction of natural material in native context

Country / City	China
University / School	Beijing Forestry University
Academic year	2017-2018
Title of the project	Mount Weave Water: Algorithm Construction of Natural Material in Native context
Authors	Li Wen, Liu Zhe, Wang Zhaodi





PERFORMATIVE NATURE

Barcelona International Landscape Architecture Biennial

September 2018 **Barcelona**

SCHOOL PRIZE

X International Landscape Architecture Biennial

Máster d'Arquitectura del Paisatge -DUOT - UPC

ETSAB- Escola Tècnica Superior

d'Arquitectura de Barcelona

Avenida Diagonal, 649 piso 5

08028 Barcelona-Spain

TECHNICAL DOSSIER

Title of the project	Mount Weave Water
Authors	Li Wen, Liu Zhe, Wang Zhaodi
Title of the course	Landscape Architecture Design Studio
Academic year	2016-2017
Teaching Staff	Wang Xiangrong, Zheng Xi
Department/Section/Program of belonging	School of Landscape Architecture
University/School	Beijing Forestry University

Written statement, short description of the project in English, no more than 250 words

The site is located in Nanning, China, where is famous for the beautiful picturesque natural landscape. The project, 'Weaving Mount and Water', intends to create a tight connection with the surrounding hills and water systems, as well as integrate the unique spiritual symbols and local identity.

The spatial experience of surrounded by mountains and water is the primary intention of the project. The inspiration is from traditional Chinese drawing techniques of interpreting the landscape and mountains at a distance. Applying 'Weaving' as the medium and 'Bamboo steel' as the materials as the skeleton. While the texture of mountain is woven with plam hemp rope, and interlinked with ropes to create various spatial experience. Various local plant species interact with the weaving structures, causing a strong contrast between the soft plants texture and hard steel structure. The interpretation of "mountain" and "water" is extended from two levels. The view extending from the garden integrates the mountain shape structure in the distance. And a lower perspective of the water will create a vague connection with the natural waterway.

For further information

Máster d'Arquitectura del Paisatge -DUOT - UPC

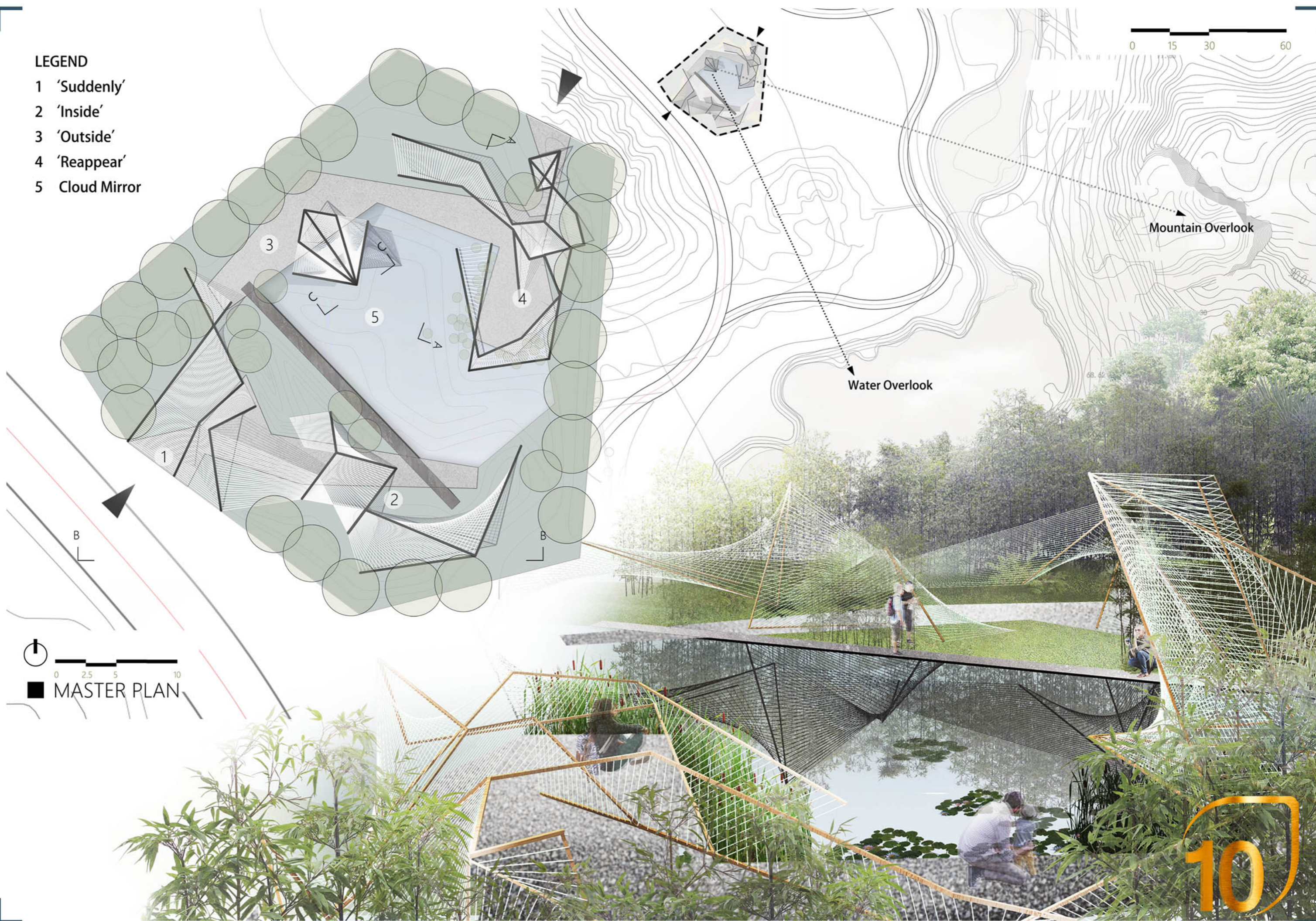
T: + 34 93 401 64 11 / +34 93 552 0842

Contact via email at: biennial.paisatge@upc.edu

Consult the web page <http://landscape.coac.net/>

LEGEND

- 1 'Suddenly'
- 2 'Inside'
- 3 'Outside'
- 4 'Reappear'
- 5 Cloud Mirror



B



MASTER PLAN

10

DESIGN STATEMENT

The site is located in Nanning, China, where is famous for the beautiful picturesque natural landscape. The project, 'Weaving Mount and Water', intends to create a tight connection with the surrounding hills and water systems, as well as integrate the unique spiritual symbols and local identity.

The spatial experience of surrounded by mountains and water is the primary intention of the project. The inspiration is from traditional Chinese drawing techniques of interpreting the landscape and mountains at a distance. Applying 'Weaving' as the medium and 'Bamboo steel' as the materials as the skeleton. While the texture of mountain is woven with plam hemp rope, and interlinked with ropes to create various spatial experience. Various local plant species interact with the weaving structures, causing a strong contrast between the soft plants texture and hard steel structure. The interpretation of "mountain" and "water" is extended from two levels. The view extending from the garden integrates the mountain shape structure in the distance. And a lower perspective of the water will create a vague connection with the natural waterway.

Inspiration: Traditional Drawing and Weaving Handcraft



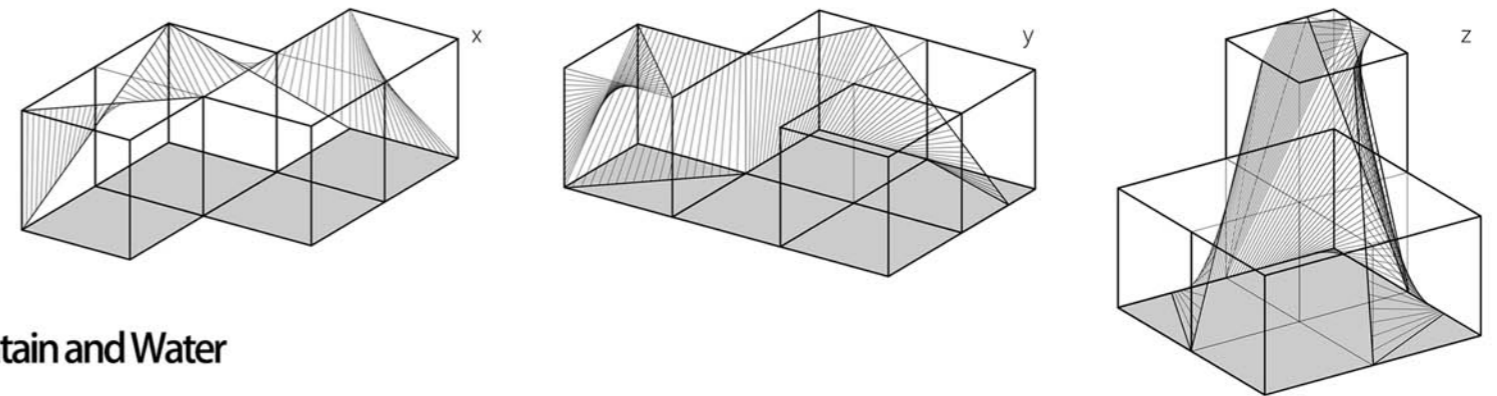
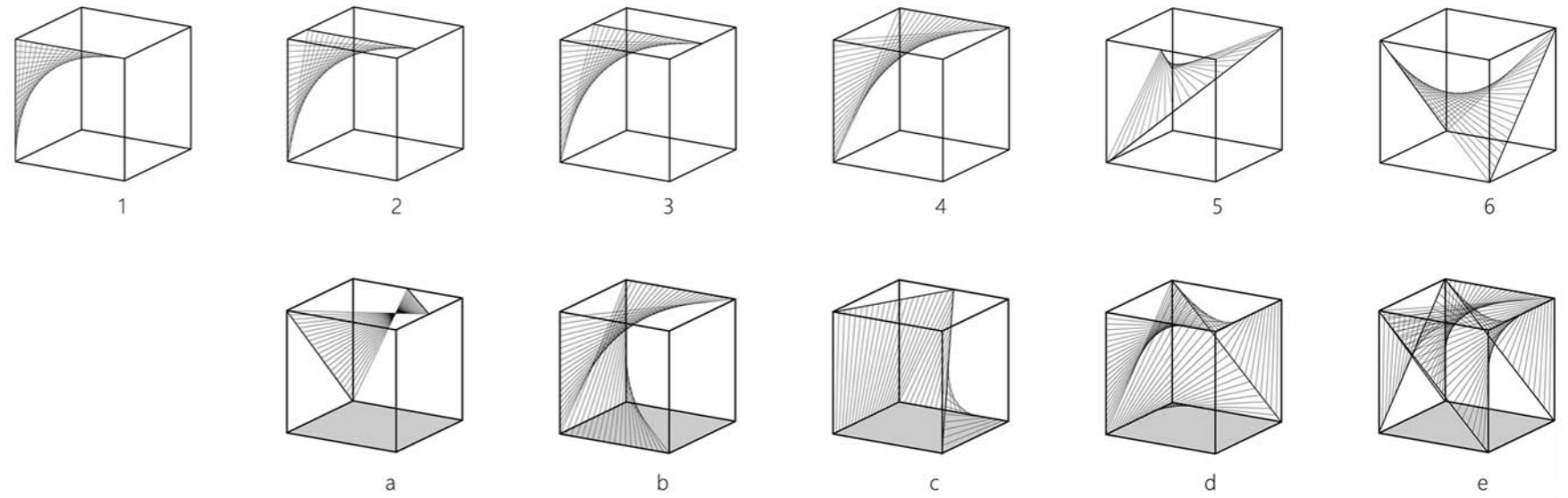
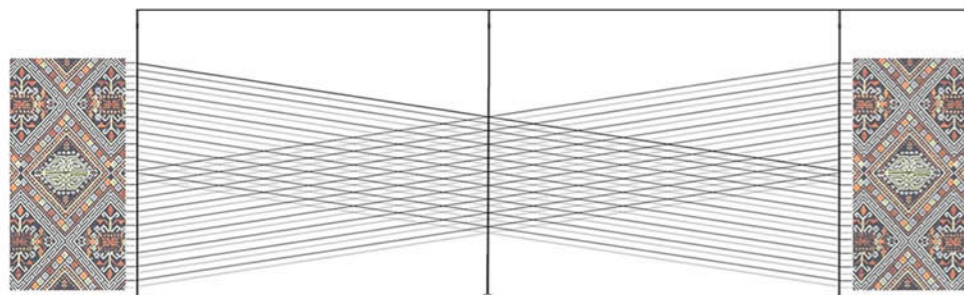
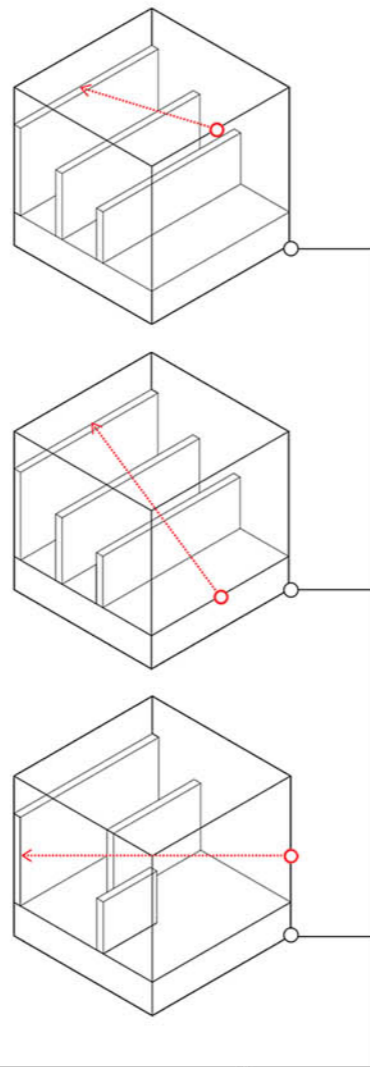
'Flat Far' : View the mountains in a distance from a close point, which is a overlook perspective.



'High Far' : View the hilltop from the bottom of the mountain, which is a look-up perspective and reflects the magnificence of the mountains.



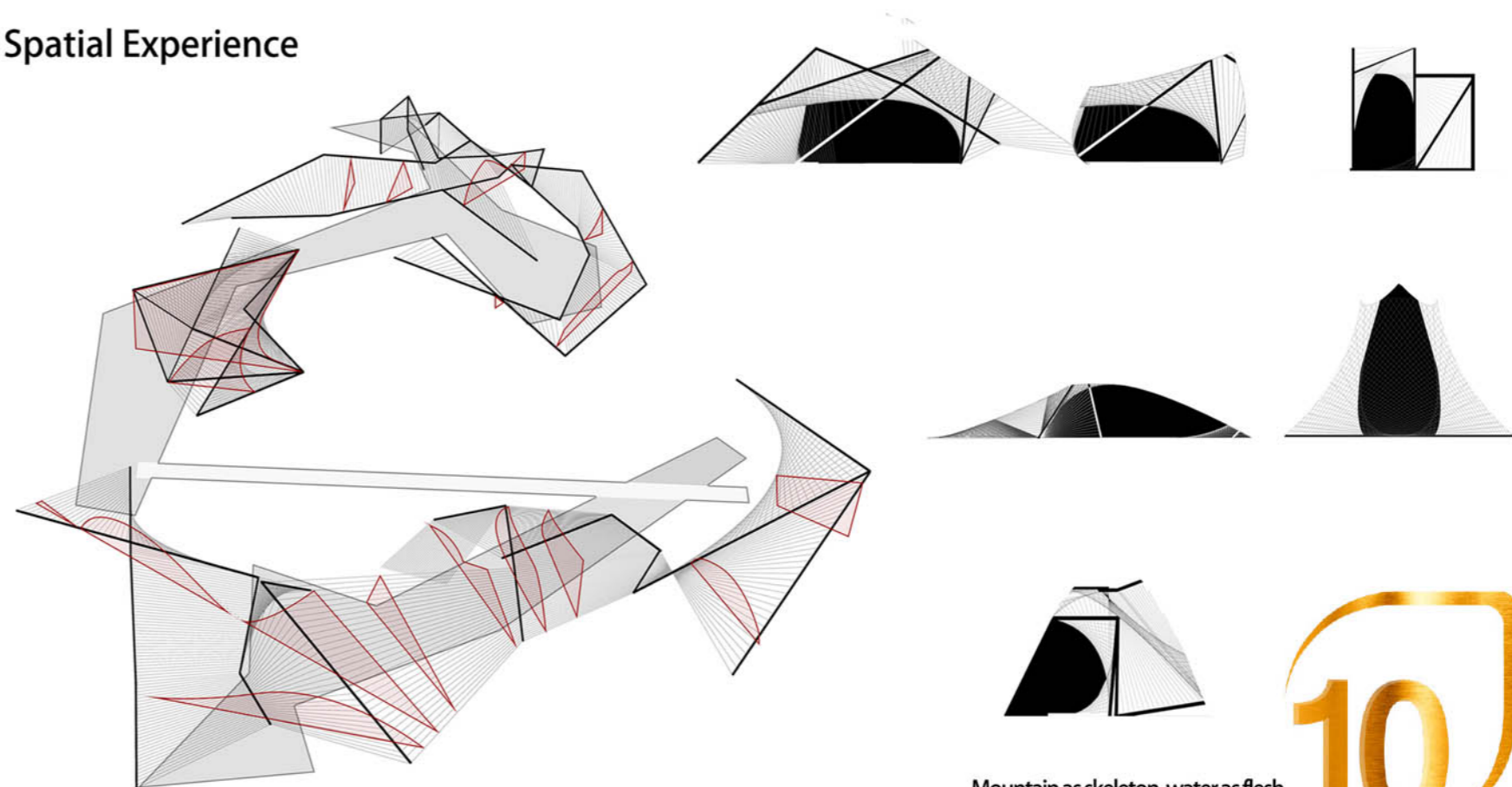
'Deep Far' : View the mountain from the back, which intends to create a playful deep perspective and space.



Weaving Mountain and Water

The basic element [1] as the body plan, combines and rotate in different angles and various spaces (a-e) and actual form in the site (x,y,z) are generated.

Spatial Experience



The consecutive spaces extend along the structure. The sections above explain the spatial experience along the main visiting route.

Mountain as skeleton, water as flesh.



Concept Development

Material

- White hemp rope
- Bamboo Steel (Compound made with bamboo)



Hardscape

A pathway with stone pavement is constructed as surrounding the waterscape in the middle. The gravel guarantees the permeability.

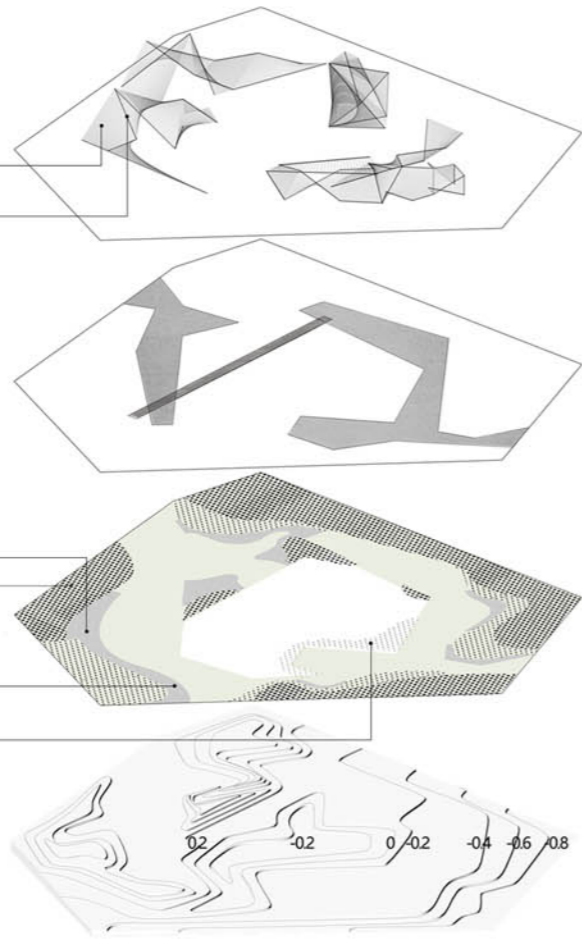
Plant Species

- Nandina domestica*
- Phyllostachys Viridis*
- Eragrostis pilosa*
- Nephrolepis auriculata*
- Festuca glauca*
- Typha angustifolia*
- Imperata cylindrical*
- O. japonicus*
- Nymphaea tetragona*
- Nymphaea lotus*



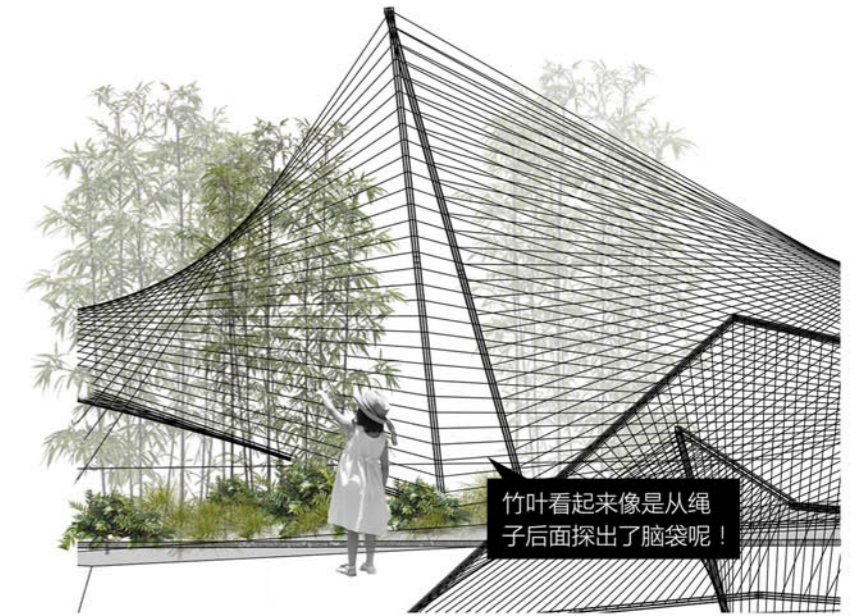
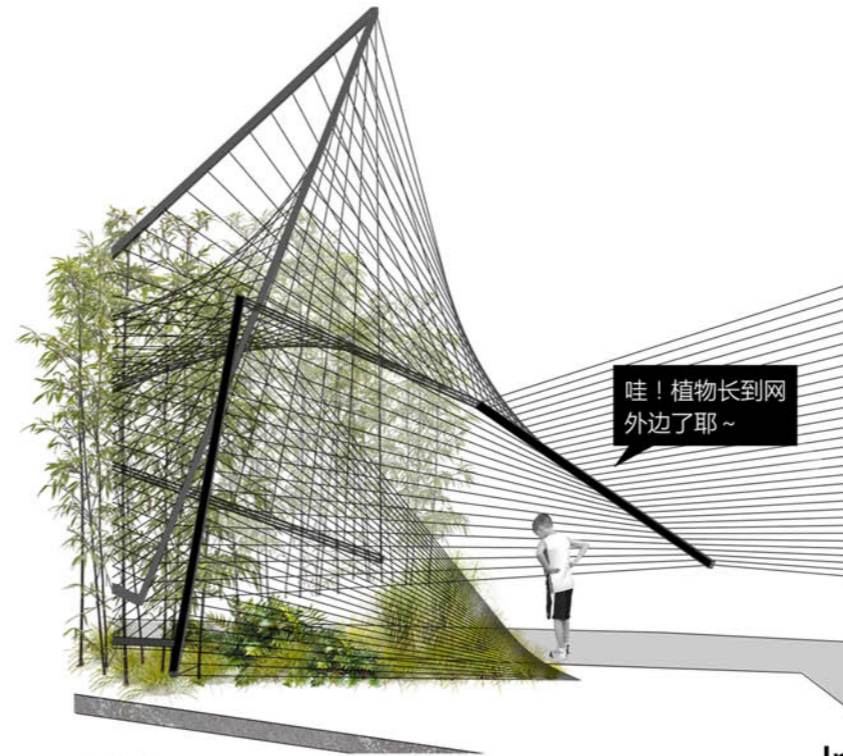
Site Condition

The grading is carefully designed based on the original topography. The rainwater is drained from the southern side and re-charge the waterscape seasonally during the rain season.



Relationship between Human and Nature

The interesting connection is drawn by the web structures and plants. People could experience the beauty of plants and season in the interior space.



Inspiration from Traditional Chinese Drawing Techniques

