

STONEHILL HEART



Country / City Enfield, London UK

University / School University of Gloucestershire

Academic year 2017/2018

Title of the project Stonehill Heart

Authors Marta Gooch Radice





PERFORMATIVE NATURE

Barcelona International Landscape Architecture Biennial

September 2018 **Barcelona**

SCHOOL PRIZE

X International Landscape Architecture Biennial

Màster d'Arquitectura del Paisatge -DUOT - UPC
ETSAB- Escola Tècnica Superior
d'Arquitectura de Barcelona
Avenida Diagonal, 649 piso 5
08028 Barcelona-Spain

TECHNICAL DOSSIER

Title of the project Stonehill Heart
Authors Marta Gooch Radice
Title of the course LandscapeArchitecture (Undergraduate)
Academic year 2017/2018
Teaching Staff Allan Mitchell
Department/Section/Program of belonging Faculty of Landscape Architecture, School of Art and Design
University/School University of Gloucestershire, Cheltenham UK

Written statement, short description of the project in English, no more than 250 words

The Stonehill Heart redevelopment takes place in the southern eastern part of the north London Borough of Enfield. The aim of the scheme is the creation of a new Hub in the periphery of the town, replacing the derelict industrial estate that currently occupies the site. This mixed use scheme will include housing, leisure and retail facilities and opportunities for economic growth that aim to benefit the new and existing communities of this deprived area of London. The strategic location of the site creates great opportunities for connectivity, with the enhancement of links with the wider context, encouraging the creation of more engaging and supportive neighbourhoods. The integration and enhancement of the existing green and blue networks is a key element of Stonehill Heart, where a focus is given to sustainability, the environment and healthy living. This project aims to demonstrate how a sustainable and innovative approach, and most importantly, a landscape led approach ensures a successful outcome. The redevelopment project focuses around the social, economic and environmental aspects of planning, ensuring the creation of a self-sustaining, inclusive and healthy community, bringing new opportunities for a sustainable future. It is an example of the contribution professionals in landscape architecture can bring to developments, emphasising the importance of space creation, sustainable elements and the integration of green and blue infrastructure.

For further information
Màster d'Arquitectura del Paisatge -DUOT - UPC

T: + 34 93 401 64 11 / +34 93 552 0842
Contact via email at: biennial.paisatge@upc.edu
Consult the web page <http://landscape.coac.net/>



THE SITE

The character of the site and its surroundings is defined by the area's heavily industrial heritage. The strategic road infrastructure has played an important part in the success of these industrial and retail land uses, but unfortunately have also reduced connectivity between the surroundings. There are portions of land which are inaccessible, and alongside the poor public realm, increase the division between this area and what is around it. There is little provision for pedestrians and cyclists; a surprising element given the position of this site within the Lee Valley Regional Park. The view in the site is largely dominated by the electricity pylons and by the elevated part of the North Circular Road to the north of the site. Canals and rivers also characterise this area, as the River Lee, River Lee Navigation and Pymmes Brook all run across the site. The big body of water, Bamberly Reservoir part of the Walthamstow Reservoir Network, to the south of the site is not visible because of the embankment to the sides of it.



A WELL CONNECTED SITE

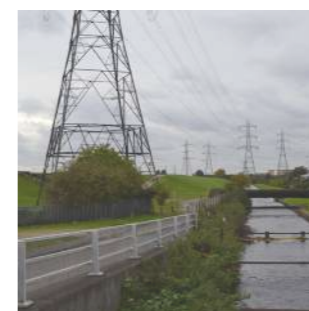
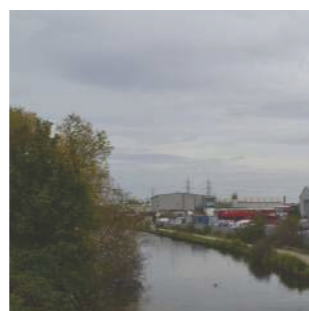
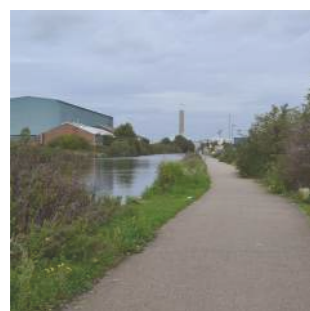
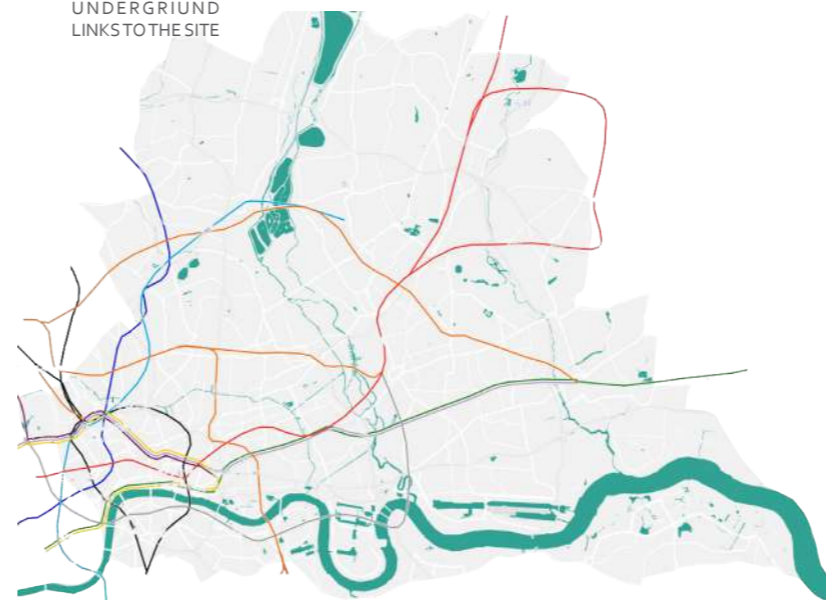
The surrounding areas are very well linked with the Capital and the wider context both via the road networks and the public transport. Unfortunately the site itself does not have this level of accessibility. With the addition of transport services and combined with the enhancement of existing facilities and access, the site can be fully connected and integrated with the surrounding local communities and connected with the wider context. More efficient connections can have great positive impacts on the economy of the new development, making the area a comfortable and desirable place to live and work. The Road network around the site offers great links but there



currently is a lack of accessibility from the south or the west of the site making traffic circulation at times inconvenient. There is the possibility of providing access from both these directions strengthening vehicular access. There is a great opportunity to improve and enhance the pedestrian and cycle routes through the Lee Valley but also leading to the surrounding communities. This makes sure the neighbouring areas are well linked with the new scheme so that the already existing residents can also benefit from the regeneration of this land benefit. The design of safe and useable pedestrian and cycle routes also encourages movement throughout Stonehill, promoting healthy lifestyles.

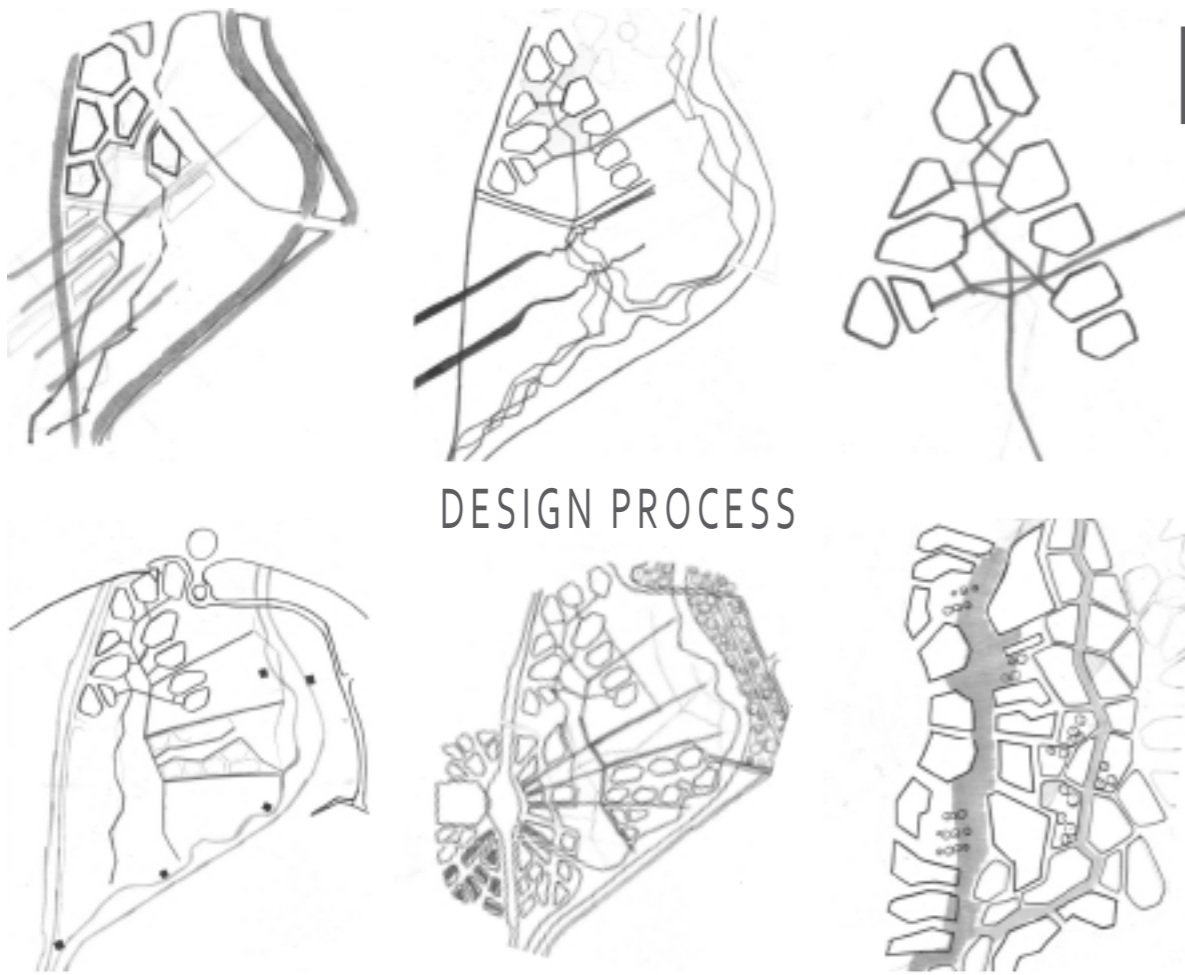


UNDERGROUND LINKS TO THE SITE



MASTERPLAN

DESIGN PROCESS



The design for Stonehill Heart was a result of the process involving the ideas of connectivity and the close relationship to nature. The building shapes have been

created with a clear rationale in maximising the outdoor space available for the public, as well as making sure these spaces are most exposed to natural sunlight.



CYCLE ROUTES

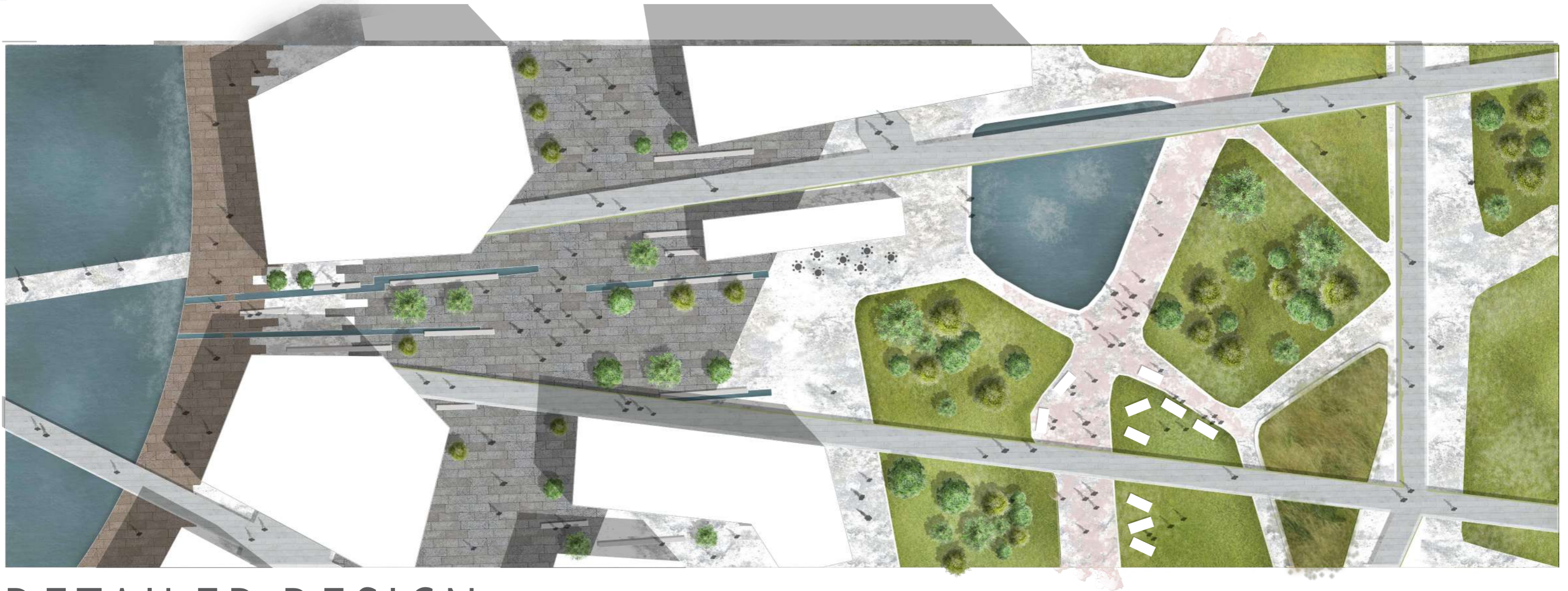
VEHICLE ROUTES

GREEN INFRASTRUCTURE

The new Stonehill scheme creates a vibrant new mixed use development. It regenerates an area that is currently redundant and creates barriers between the surrounding communities, and where the natural areas are not used to their full potential. The masterplan sets out a development that aims to connect the east and the west areas through Green infrastructure, pedestrian and cycle links. This will strengthen links with the surrounding context, making

Stonehill Heart a place for everyone. The masterplan shapes the new community around the links with the surrounding communities and neighbourhoods, creating a vibrant mix of uses and a distinctive place that people will call home. Stonehill will be a place where people have a sense of permanence and belonging; a unique space strengthened by the Green routes and Lee Valley Waterways, with a hint to the industrial heritage of the area.





DETAILED DESIGN

