

# EXPERIENCING MATERIALITY



Country / City	England, Cheltenham
University / School	University of Gloucestershire
Academic year	Postgraduate Diploma 2018
Title of the project	Cumberland Basin, Bristol
Authors	Paul McGoldrick





# PERFORMATIVE NATURE

Barcelona International Landscape Architecture Biennial

September 2018 **Barcelona**

SCHOOL PRIZE

X International Landscape Architecture Biennial

Máster d'Arquitectura del Paisatge -DUOT - UPC  
ETSAB- Escola Tècnica Superior  
d'Arquitectura de Barcelona  
Avenida Diagonal, 649 piso 5  
08028 Barcelona-Spain

## TECHNICAL DOSSIER

Title of the project Experiencing Materiality  
Authors Paul McGoldrick  
Title of the course Postgraduate Diploma Landscape Architecture  
Academic year 2018  
Teaching Staff Dr David Buck  
Department/Section/Program of belonging Art and Design  
University/School University of Gloucestershire

Written statement, short description of the project in English, no more than 250 words

The concept of this project is to investigate the ecological cycles of objects in the built environment to highlight how they were produced and where they came from.

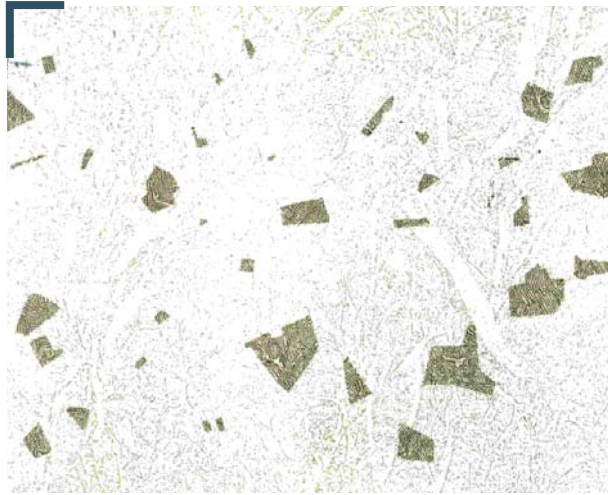
The industrial process of extraction of minerals, manufacturing and transportation is something that isn't usually seen in our everyday lives. My project is based on cities being constructed where materials are more familiar to us and where possible they are extracted and manufactured nearby. By seeing and becoming more aware of materials and their process of construction will bring greater knowledge of these resources.

For this project I have been experimenting with materials in order to try and understand how they are made and could be used for projects. The experience of using and exploring the possibilities of materials provides us with a better understanding of what can be achieved through the process of making.

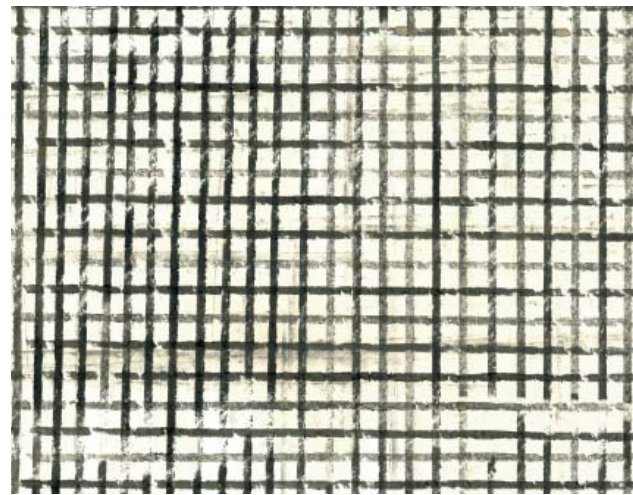
For further information  
Máster d'Arquitectura del Paisatge -DUOT - UPC

T: + 34 93 401 64 11 / +34 93 552 0842  
Contact via email at: [biennal.paisatge@upc.edu](mailto:biennal.paisatge@upc.edu)  
Consult the web page <http://landscape.coac.net/>

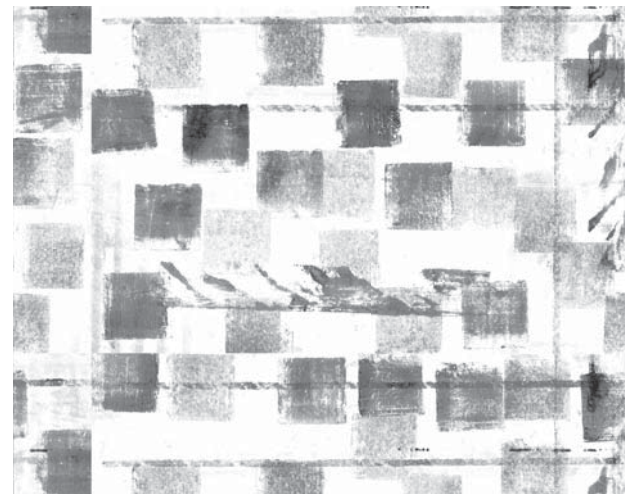




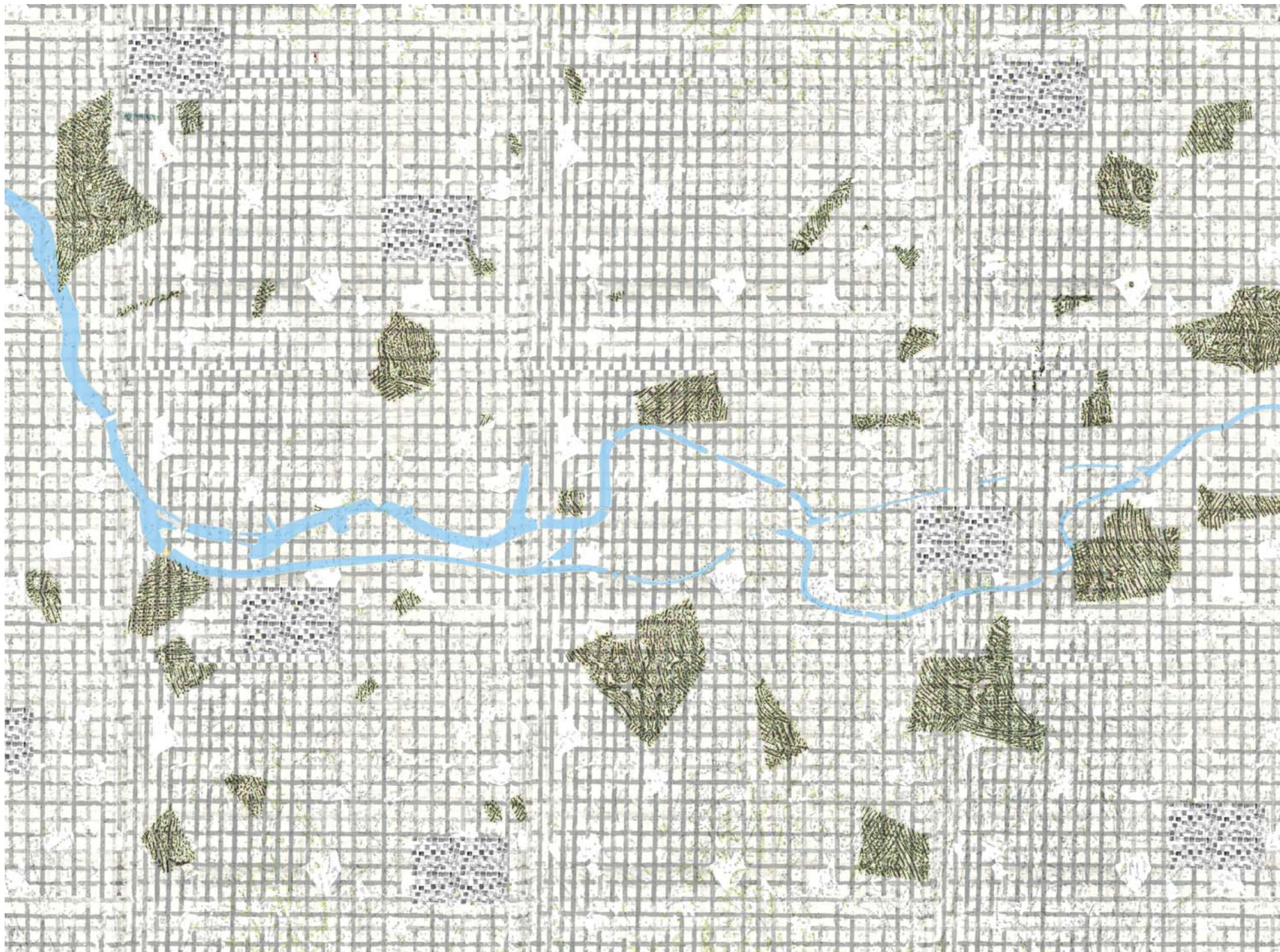
Topography and Parks



Existing Built Environment



Proposed Developments



Concept Masterplan



A model that highlights the process of production. The concrete model is divided into the material ratios to produce concrete and the components are measured to equal the volume of the outer concrete structure.  
Materials: Water, cement, aggregate, sand, concrete, plaster, vinamould, wood.



Model, 1:100, Concrete



Model, 1:500, Concrete







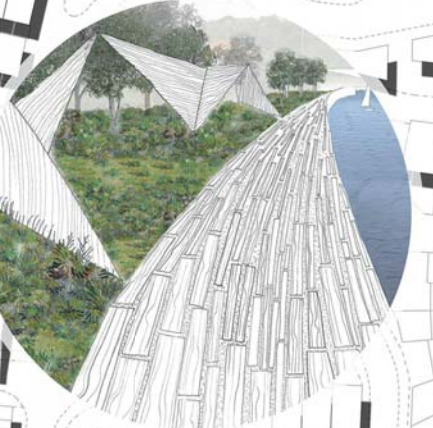
- Pedestrian Access
- Vehicle Access
- Wildflower Planting
- River
- Tree Planting
- Existing Rear Garden



**1** The floor of the park in this area is inspired by sand dunes. This area of the site receives strong winds travelling from the mouth of the River Avon. The planting has been chosen to create movement in the space when there is wind.



**2** The curved design of this tunnel is inspired by the flow of wind travelling along this narrow enclosed space in the site. The steel sculpture is detailed and shaped to capture the sound of the wind to create an experience for the public.



**3** Given the location next to the entrance of the docklands and inspired by Bristol's history of boats, I created an installation of boat sails along the river for people to experience the movement and sounds created by the wind.

The concept for Cumberland Basin was to use the wind found on site as a catalyst for the design and enhance the wind's presence in the landscape. Throughout the site there are sculptures, architecture, materials and planting that have been selected with wind in mind. My goal was to create a place where people could reconnect with this natural resource through experiencing its sounds and visual qualities.

# CUMBERLAND BASIN

N  
Scale 1:500

