



# PERFORMATIVE NATURE

Barcelona International Landscape Architecture Biennial

September 2018 **Barcelona**

SCHOOL PRIZE

X International Landscape Architecture Biennial

Máster d'Arquitectura del Paisatge -DUOT - UPC

ETSAB- Escola Tècnica Superior

d'Arquitectura de Barcelona

Avenida Diagonal, 649 piso 5

08028 Barcelona-Spain

## TECHNICAL DOSSIER

Title of the project ..... Redefining the boundaries : Landscaping the area of Allatini Mills in Thessaloniki  
Authors ..... Markozani Elissavet, Zouganelis Spyridon  
Title of the course ..... Diploma Thesis Project  
Academic year ..... 2016 - 2017  
Teaching Staff ..... Karamanea Panita, Vazakas Alexandros  
Department/Section/Program of belonging ..... School of Architecture  
University/School ..... Technical University of Crete

### Written statement, short description of the project in English, no more than 250 words

This diploma thesis attempts to design the landscape of the abandoned industrial flour Allatini complex, in Thessaloniki. The old flour mill is located in the southeastern part of the city, at the municipal boundaries and in a short distance from the sea. The study area is adjacent to urban locations, such as the New Waterfront of Thessaloniki, the Concert Hall, the Poseidon swimming complex and the sailing club. The industrial residues are the reference point of the design, which aims at the integration of the two most important elements that surround them: the city and the sea. The site is organized longitudinally into three different zones. The city zone is directly connected with the urban environment, the sea zone, and the green zone that works as a vegetated link between the first two. The interconnection between the zones is reinforced by the use of transverse lines taken directly from the urban context. The green element is part of the design's structural component forming a special disintegration system from the city to the beach and creating different scenarios. The new materiality of the proposal complements the idea of the gradual parallel to the waterfront zones. The city zone is covered mostly by harder materials like concrete, while softer more natural ones, such as rammed earth and wood, are used in the green and sea zone, respectively. Regarding the vegetation system, large evergreen trees are placed at the edge of the urban frame as a direct continuation of the large apartment buildings. Smaller evergreen trees are placed in the green and sea zone in order to highlight this disintegration. All of this vegetated system of various trees, shrubs flowers and natural materials create an ecological core which aims to improve the microclimate of the area and to create a multifunctional urban space-park.

For further information

**Máster d'Arquitectura del Paisatge -DUOT - UPC**

T: + 34 93 401 64 11 / +34 93 552 0842

Contact via email at: [biennial.paisatge@upc.edu](mailto:biennial.paisatge@upc.edu)

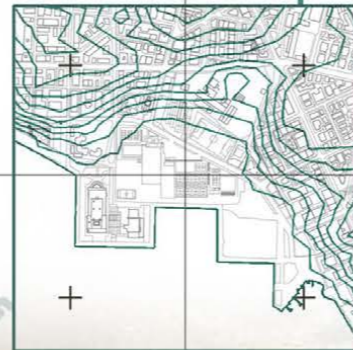
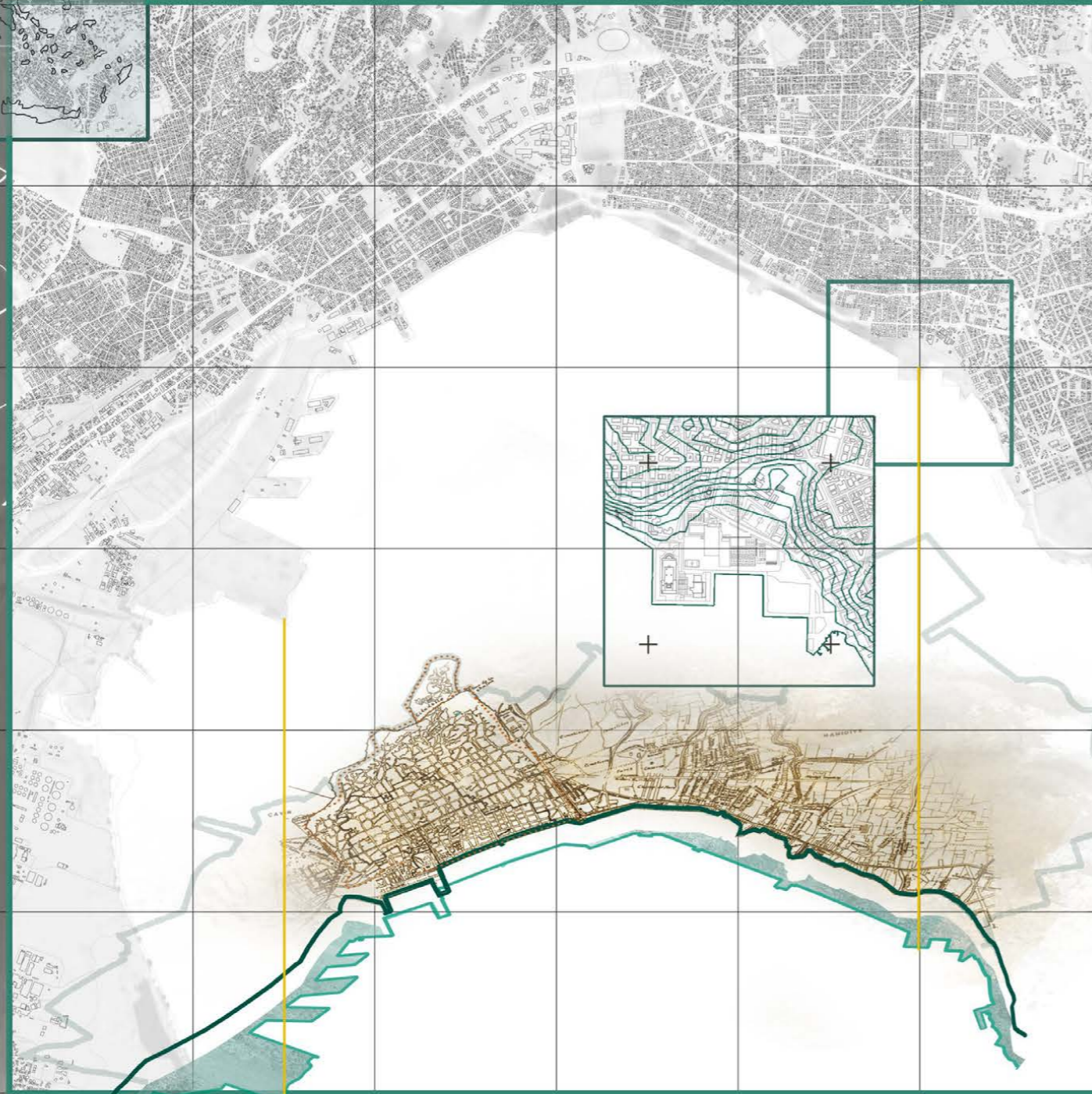
Consult the web page <http://landscape.coac.net/>



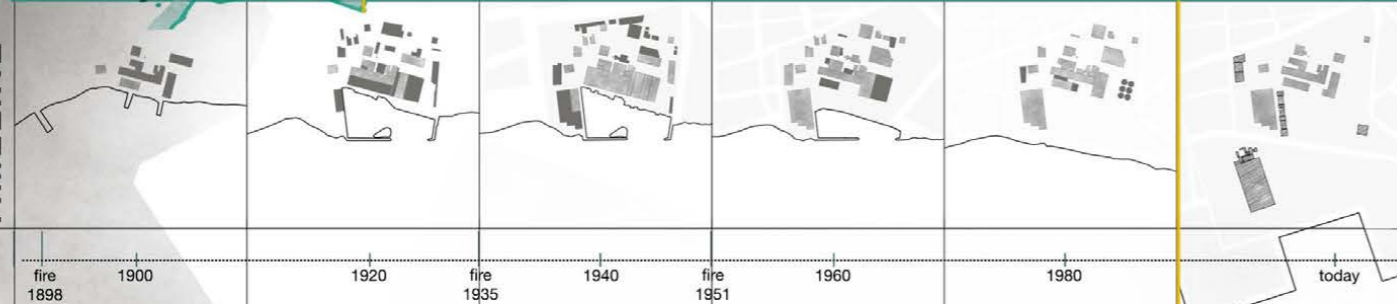
Country / City	Greece / Chania - Crete
University / School	Technical University of Crete
Academic year	2016 - 2017
Title of the project	Redefining the boundaries : Landscaping the area of Allatini Mills in Thessaloniki
Authors	Markozani Elissavet, Zouganelis Spyridon

# Redefining the boundaries :

- Organize the landscape and reintegrate the study area into the wider urban environment,
- Transform the area into a Cultural and Recreational center so as to attract more visitors,
- Create a multifunctional landscape, emphasizing on the local identity while highlighting the historical importance and the values of the area,
- Regenerate the area, in order to transform it into an ecological core.

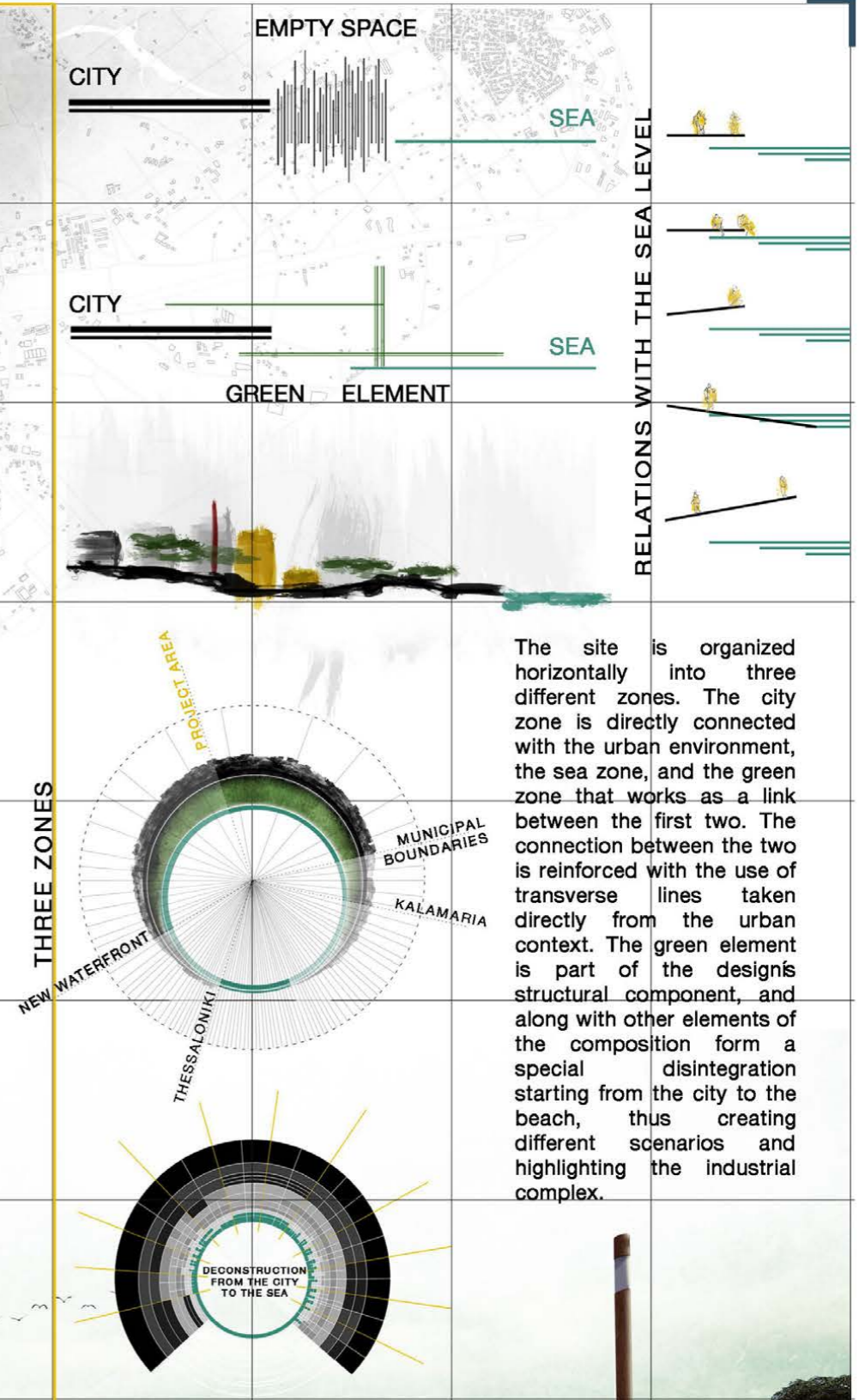
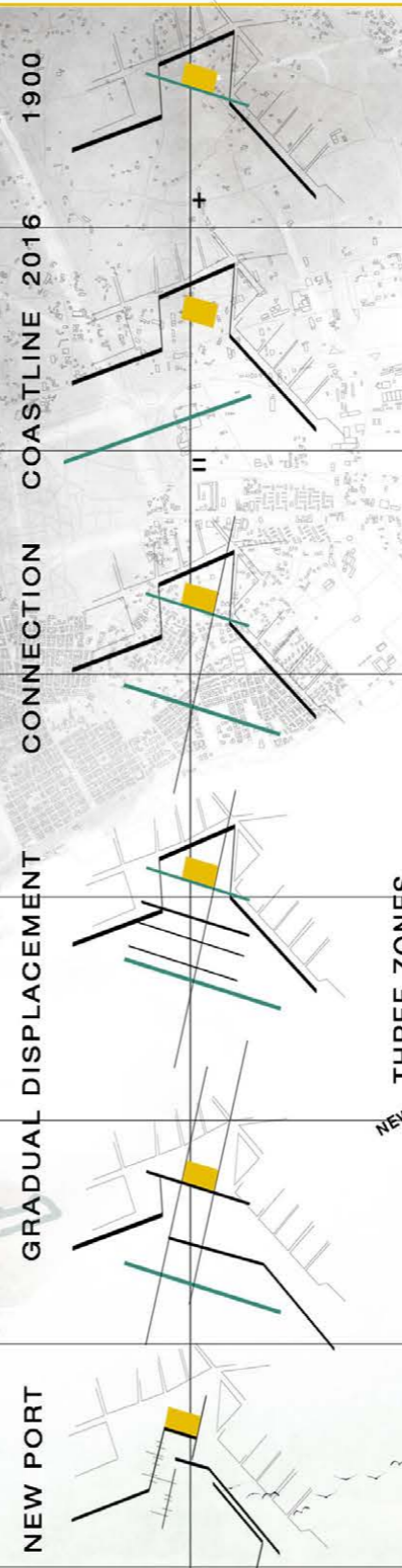


## TIMELINE



The area's first and last coastlines are brought into the design, with the intention of connecting them, using geometry taken by the industrial complex and the various parallel displacements that are formed, and therefore create a symbolic 'hug', a 'port' that signifies the beginning or the end of the city's marina, respectively. The new port, which is the main idea of the design, aims to reinforce the sense of memory of the area.

## CONCEPT



The site is organized horizontally into three different zones. The city zone is directly connected with the urban environment, the sea zone, and the green zone that works as a link between the first two. The connection between the two is reinforced with the use of transverse lines taken directly from the urban context. The green element is part of the design's structural component, and along with other elements of the composition form a special disintegration starting from the city to the beach, thus creating different scenarios and highlighting the industrial complex.



While approaching the study area from the north side, where the New Water- front is located, one can find the main pathway of the park which is directly related to the three new sites that are created. The Concert Hall, on the west side, is associated with the rest of the proposal by creating various exterior terraces. On the east side, a large slope connects the main pathway with the 'Industrial Heritage Square' (1st site), located at the end of the city's main arteries. Piers and sitting areas are placed on the green slope and smaller paths cross the main pathway end and up at the sea level on an inclined surface that is either immersed in the water or forms small pools. The main path of the park leads to the central square in front of the old industrial complex, which is transformed into an "Art Centre" (2nd site).

The cityscape on the east side is associated with higher vegetation that either leads to a metal square or to the central square and the exterior terraces near the sea level. The Poseidon Swimming Complex is repositioned within the city zone, and on its sides various sports fields are placed while the "Gardens" (3rd site) are located in the green zone. At the edge of the city zone, there is a square and a pathway that indicate the potential connection with the area of Kalamaria on the south. The water at sea level creates different scenarios and along with the green zone lead to the new Sailing Club and a tower that marks the area and is paralleled to the "lighthouse" of the port.



## Trees

Brachychiton populneus  
Citrus aurantium  
Citrus limonum  
Citrus sinensis  
Ficus nitida  
Laurus nobilis  
Magnolia grandiflora  
Olea europaea  
Pinus halepensis  
Pinus pinea  
Quercus ilex

Acer pseudoplatanus  
Amygdalus communis  
Cercis siliquastrum  
Crataegus laevigata  
Jacaranda  
Platanus orientalis  
Prunus cerasifera  
Robinia pseudoacacia  
Tamarix gallica

## Shrubs

Aloysia citrodora  
Buxus sempervirens  
Callistemon citrinus  
Coronilla glauca  
Lavandula  
Origanum vulgare  
Rosmarinus officinalis  
Salvia officinalis  
Stipa  
Thymus vulgaris  
Verbascum thapsus

## Flowers

Osteospermum  
Papaver rhoeas  
Viola odorata

J F M A M J J A S O N D

## VEGETATION DIAGRAMS

Regarding the vegetation system, large evergreen trees are placed at the edge of the urban frame as a direct continuation of the large apartment buildings. Deciduous trees are planted on the sides of the passageways so as to signify the movements and changes throughout the year.

Smaller evergreen trees work as boundaries of the sitting areas and a small citrus grove is formed right before the location of the Tower. All of the above along with various shrubs flowers and natural materials create an ecological core which aims to improve the microclimate of the area

evergreen  
deciduous

blossoming  
non - blossoming

## ARCHITECTURAL FEATURES

LOW  
MEDIUM  
HIGH

## MATERIALS

concrete slabs  
rammed earth  
wooden surface  
gravel  
metal surface  
rocks  
basket field  
football field  
tennis field

## TERRAIN

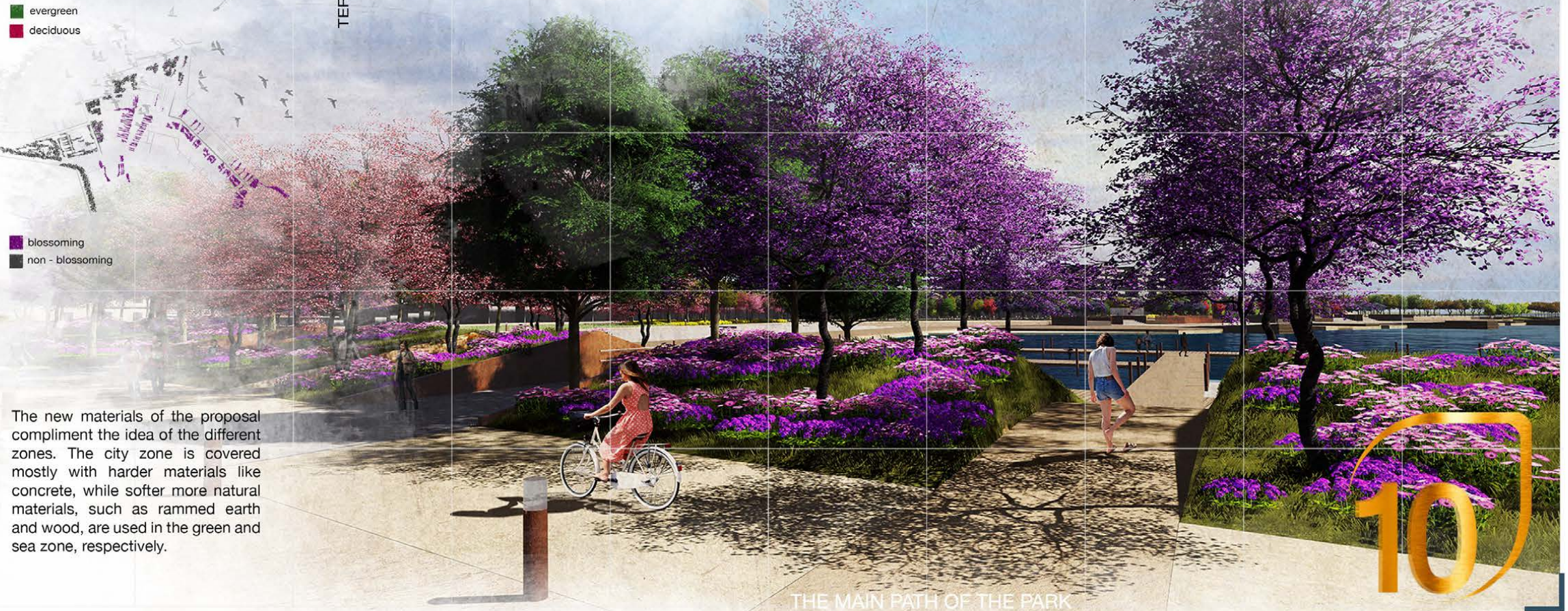
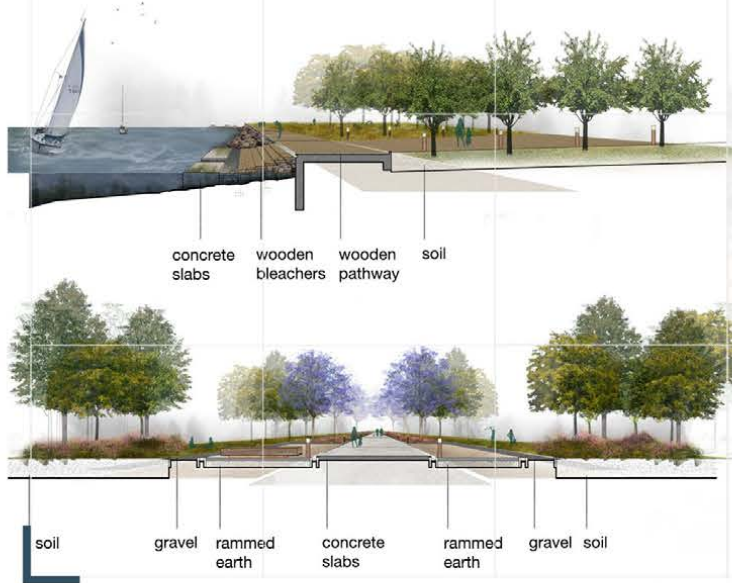


The new materials of the proposal compliment the idea of the different zones. The city zone is covered mostly with harder materials like concrete, while softer more natural materials, such as rammed earth and wood, are used in the green and sea zone, respectively.

## THE "GARDENS"

## THE "INDUSTRIAL HERITAGE SQUARE"

## THE MAIN PATH OF THE PARK



10