



MOBILITY AND QUALITY OF LIFE: AN INSEPARABLE BINOMY

Country / City  
University / School  
Academic year Title  
of the project  
Authors

**Catalonia / Barcelona**  
**UPC - ETSAB - Escola Tècnica Superior d'Arquitectura de Barcelona**  
**2017**  
**MOBILITY AND QUALITY OF LIFE: AN INSEPARABLE BINOMY**  
**Carla Bonfill Cerveró**





# PERFORMATIVE NATURE

Barcelona International Landscape Architecture Biennial

September 2018 **Barcelona**

SCHOOL PRIZE

X International Landscape Architecture Biennial

**Máster d'Arquitectura del Paisatge -DUOT - UPC**

ETSAB- Escola Tècnica Superior

d'Arquitectura de Barcelona

Avenida Diagonal, 649 piso 5

08028 Barcelona-Spain

## TECHNICAL DOSSIER

Title of the project	<b>MOBILITY AND QUALITY OF LIFE: AN INSEPARABLE BINOMY</b>
Authors	<b>Carla Bonfill Cerveró</b>
Title of the course	<b>Master's degree in Landscape Architecture-Barcelona (MBLandArch)</b>
Academic year	<b>2017</b>
Teaching Staff	<b>Anna Zahonero &amp; Ioanna Spanou</b>
Department/Section/Program of belonging	<b>Departament d'Urbanisme i Ordenació del Territori</b>
University/School	<b>UPC - ETSAB - Escola Tècnica Superior d'Arquitectura de Barcelona</b>

The project is located in the municipality of Mollet de Vallès, specifically in a peri-urban area that works as a boundary between the urban space and the natural space Gallecs.

The main objective is to improve the relationship between the urban nucleus and its surroundings, increasing both the life quality of the citizens and the environmental sustainability of the space.

In this sense we have two mobility schemes: The one that is drawn by those that the inhabitants of Mollet use, and those that use, or could use the other living beings of the territory.

On one hand, a methodology has been developed based on indicators that allow us to calculate the quality of the current pedestrian space. With the results we can establish a series of strategies and also detect needs and offer "pedestrian" solutions.

In the second case, the ecological mobility scheme is much more complex, and does not just depend on the connecting capacity it has, but on its own functional structure. In fact, the connectivity depends on the organization and structure that the different habitats create within them to form the whole system.....

There are two sectors differentiated by intensity of use: nature's space for nature, and nature's space for people.

Finally, studying the measures of the free space of Mollet, and taking into account the distances between these green systems and their relationship with the type of urban texture and its metabolism, a green new urban area has been designed that provides complementary ecological values to the city.

For further information

**Máster d'Arquitectura del Paisatge -DUOT - UPC**

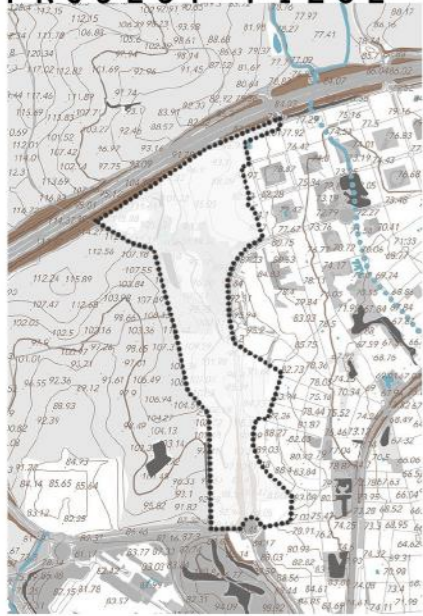
T: + 34 93 401 64 11 / +34 93 552 0842

Contact via email at: [biennial.paisatge@upc.edu](mailto:biennial.paisatge@upc.edu)

Consult the web page <http://landscape.coac.net/>



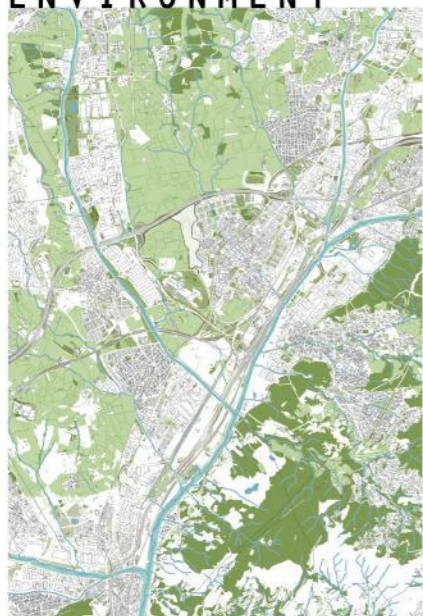
# PROJECT PIECE



# URBAN LIMIT



# AGROFORESTRY ENVIRONMENT



**INDEX WALKABILITY** The identification of mobility environments is considered a step forward for an effective integration between urban structure and travel patterns. The "pedestrianity" as the mode of transport that maintains a direct and intense relationship between the urban citizen and the city through the senses.

## ACCESSIBILITY

■ + quality  
■ -



PAVEMENTS



SLOPES



PEDESTRIAN SECTION



## ATTRACTION

■ + quality  
■ -



PROXIMITY TO GREEN SPACES



COMMERCIAL COMPLEXITY

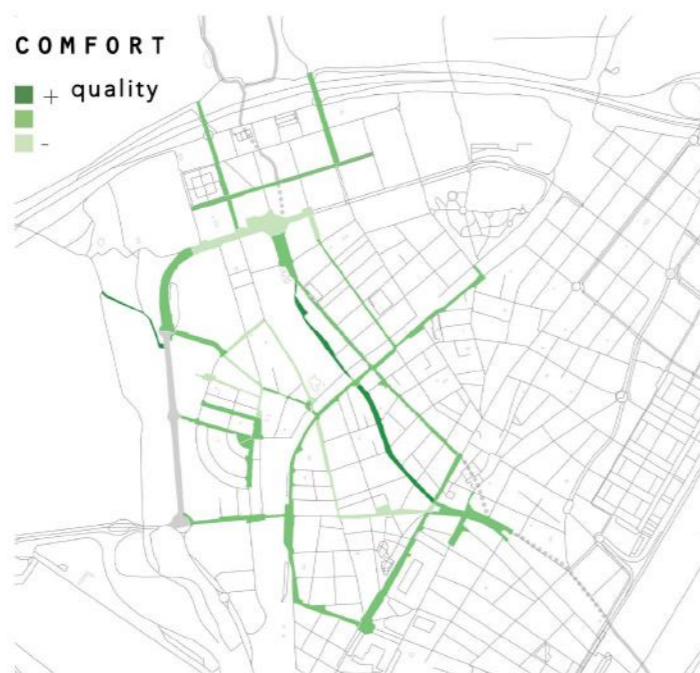


EQUIPMENT DENSITY



## COMFORT

■ + quality  
■ -



WOODLAND DENSITY



NOISE

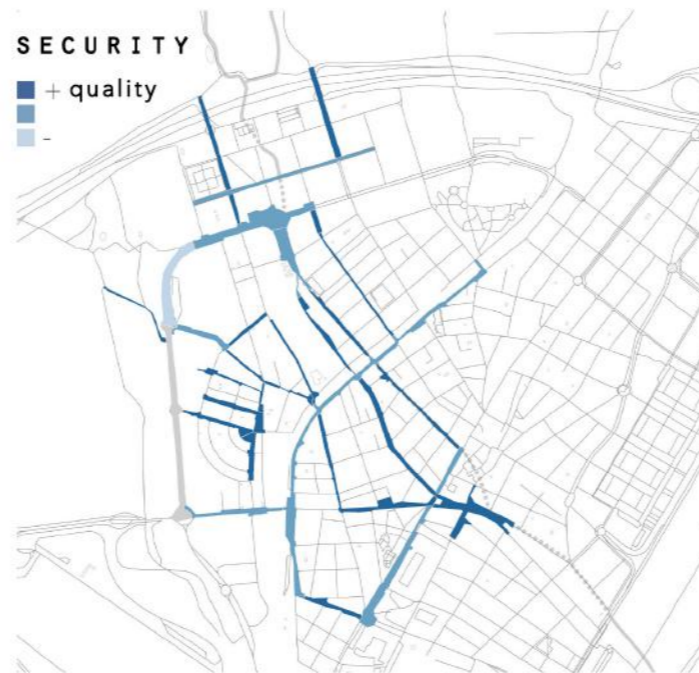


X/Y RATIO



## SECURITY

■ + quality  
■ -



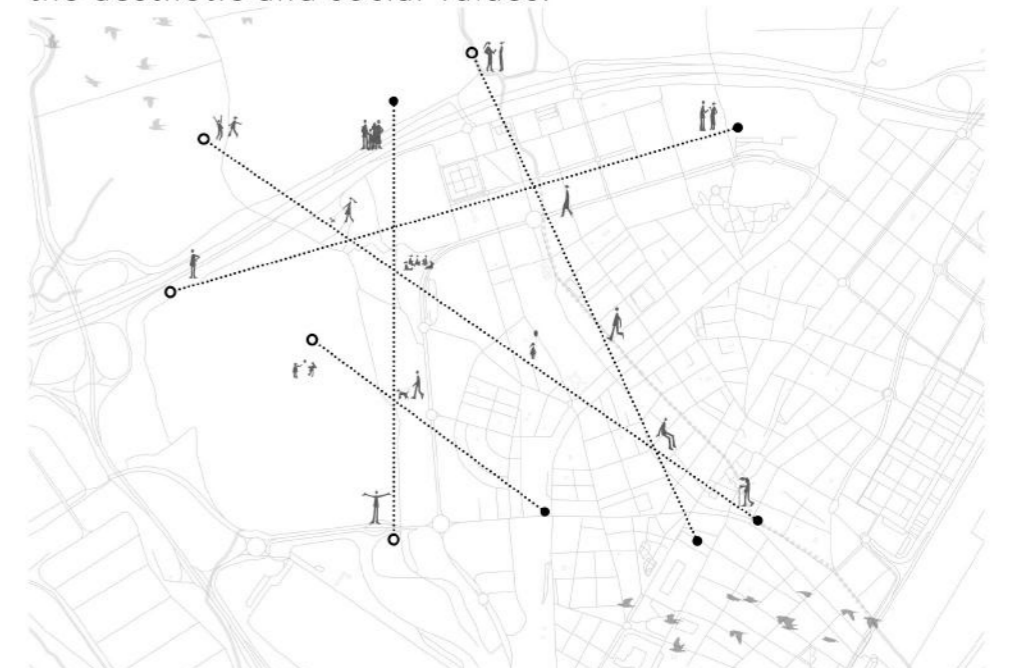
FURNITURE



MODAL FRICTION



**OBJECTIVE** To improve the relationship that Mollet del Vallès has with its surroundings, increasing the quality of life of citizens and sustainability with the environment. Recover the quality of their habitats. Emphasize the aesthetic and social values.



## GENERAL STRATEGIES

LONGITUDINAL CONNECTIVITY



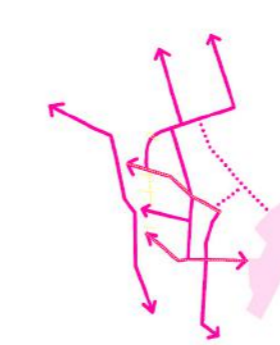
DRAINS



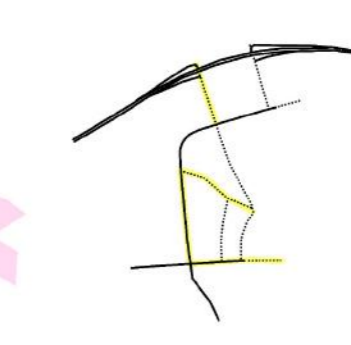
EXTENSION OF THE VEGETATION



TRANSVERSAL ACCESSIBILITY



LIMITATION OF THE FLOW OF TRAFFIC



EQUIPMENT



10



# PLANT ZOOM

## EXTENSION OF THE FOREST



## CENTRAL NEXUS



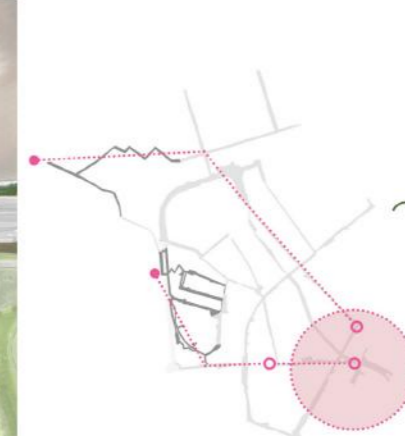
## VIEWPOINT



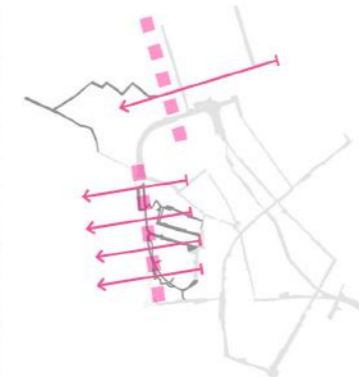
# MASTERPLANT



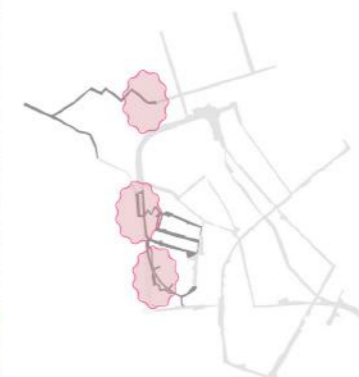
## MOBILITY STRATEGIES



DIRECT CONNECTION TO CENTER - STATION - RAMBLA



TRANSVERSE PERMEABILITY

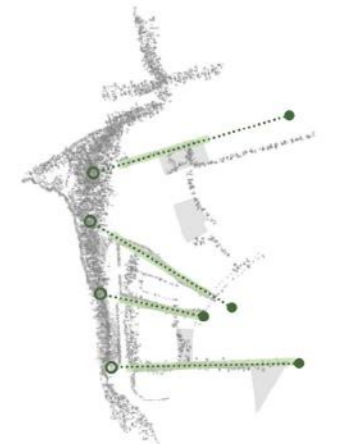


CREATION OF SPACES OF PERMANENCE

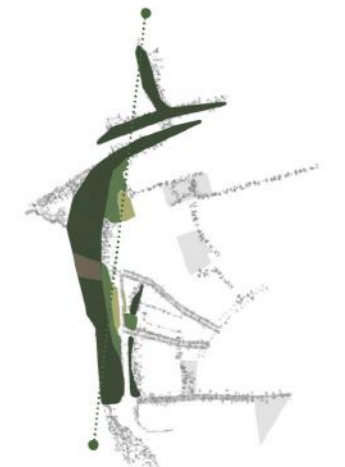
## VEGETATION STRATEGIES



DAMPING STRIP



EXTENSION OF THE VEGETATION TO THE URBAN NUCLEUS



CONSTRUCTION OF THE FOREST: HOLM OAK, PINE FOREST, HIGH MEADOW AND LOW MEADOW





CROSS SECTIONS OF THE CENTRAL NEXUS

