

# Re-Imagine Lower Tory Street



Country / City Wellington, New Zealand  
University / School Victoria University of Wellington  
Academic year 2017  
Title of the project Re-Imagine Tory Street  
Authors LAND 321 class: students, tutors and teacher



# PERFORMATIVE NATURE

Barcelona International Landscape Architecture Biennial

September 2018 **Barcelona**

SCHOOL PRIZE

X International Landscape Architecture Biennial

**Máster d'Arquitectura del Paisatge -DUOT - UPC**

ETSAB- Escola Tècnica Superior

d'Arquitectura de Barcelona

Avenida Diagonal, 649 piso 5

08028 Barcelona-Spain

## TECHNICAL DOSSIER

Title of the project	Re-Imagine Tory Street
Authors	LAND 321 class: students, tutors and teacher
Title of the course	LAND 321 - Landscape architecture construction
Academic year	2017
Teaching Staff	Carles Martinez-Almoyna
Department/Section/Program of belonging	Landscape Architecture
University/School	School of Architecture - Victoria University of Wellington

### Written statement, short description of the project in English, no more than 250 words

This project is the result of a partnership between LAND321-SoA-VUW and Wellington City council (WCC). WCC proposed to develop an interim street design project on lower Tory Street. Following principles of tactical urbanism, the project aimed to utilise the expertise of university staff and students to run a participatory project which was then implemented.

Following different workshops with local community and wider public, eleven teams of students developed concept designs that were presented and exhibited. The public voted for their favourite design. The winning proposal was developed by a team of seven students coordinated by teaching staff and supervised by WCC officers. The design was implemented by WCC with assistance from the University.

The design prioritizes pedestrian space, reducing traffic flow to one way and removing on street parking except for three loading zones. The driving lane draws a chicane for reducing speed while creating three different areas for pedestrians, with paint strips and planters providing continuity. The central area was thought as a flexible space, while the other two areas were focused to hospitality and education. The platforms of the central area and the planters were built using sustainable materials and thought to be reutilized in future projects.

The planting was seen as an opportunity for education of native flora. Many of the selected plants are rare, threatened and endangered species. The planting design is as an abstraction of NZ landscapes, symbolizing a journey from inland to coast, including low-lying plants that are low maintenance and adapted to dry and windy environments.

For further information

**Máster d'Arquitectura del Paisatge -DUOT - UPC**

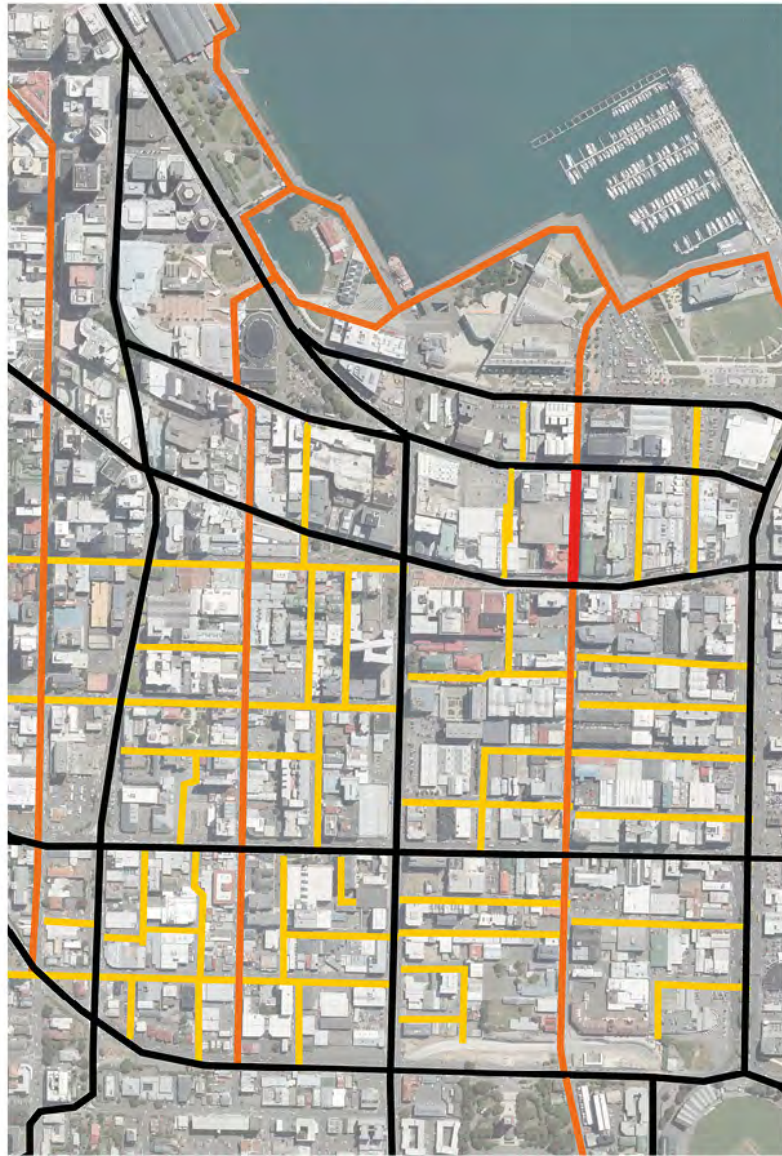
T: + 34 93 401 64 11 / +34 93 552 0842

Contact via email at: [biennial.paisatge@upc.edu](mailto:biennial.paisatge@upc.edu)

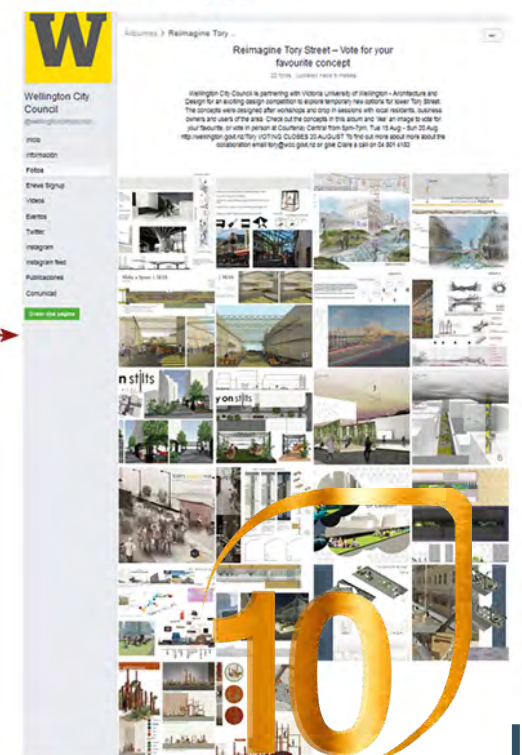
Consult the web page <http://landscape.coac.net/>



# Engagement

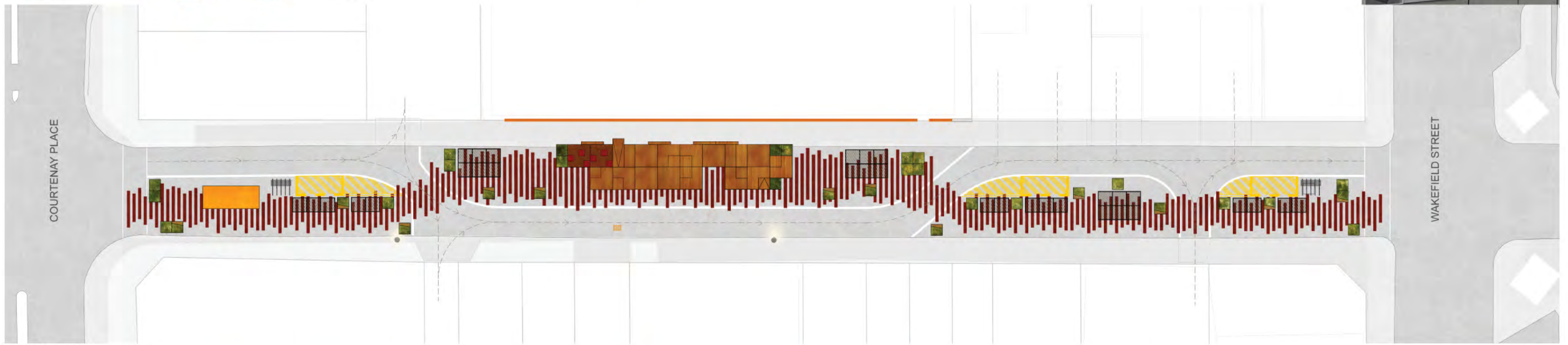
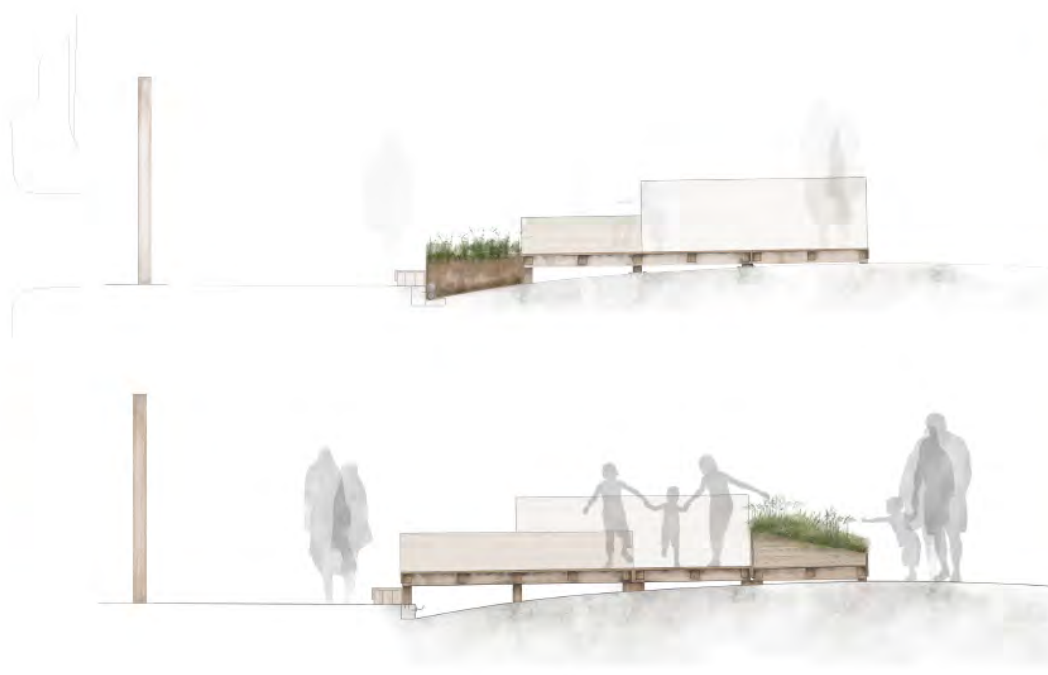
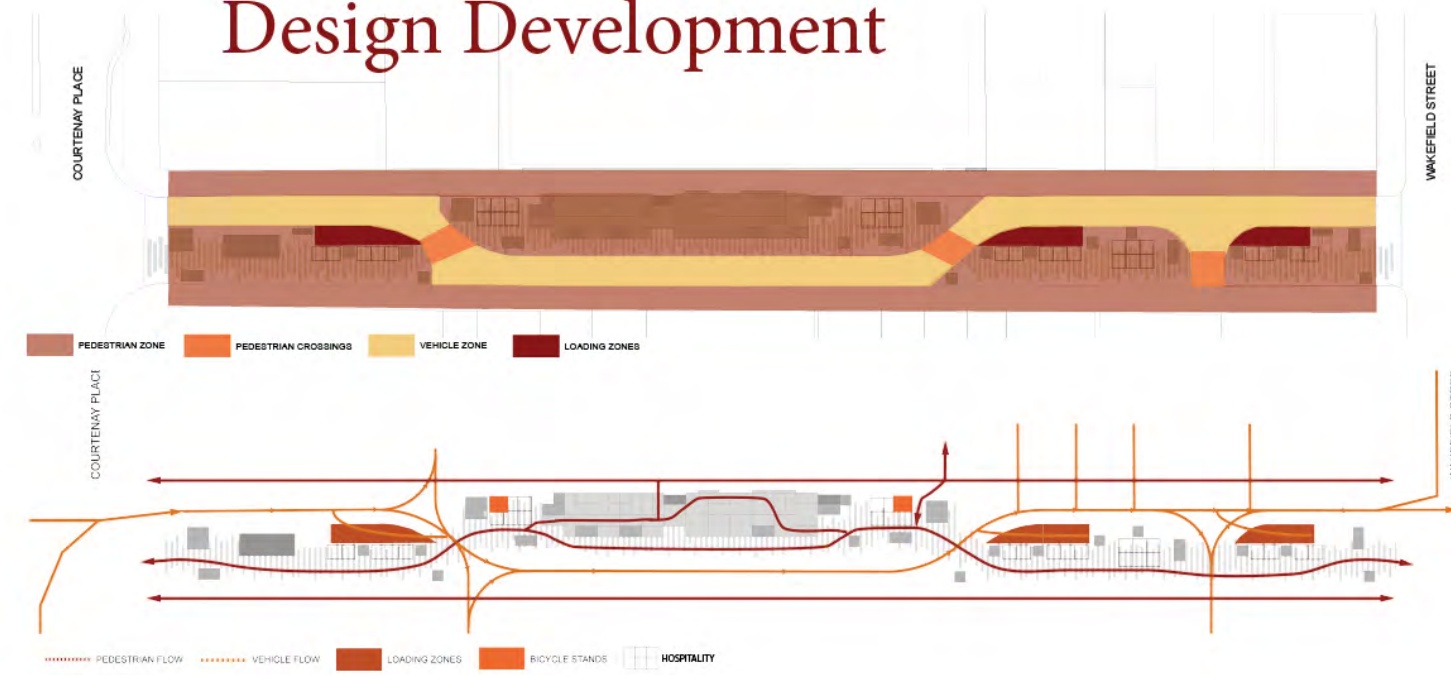


## Online Vote



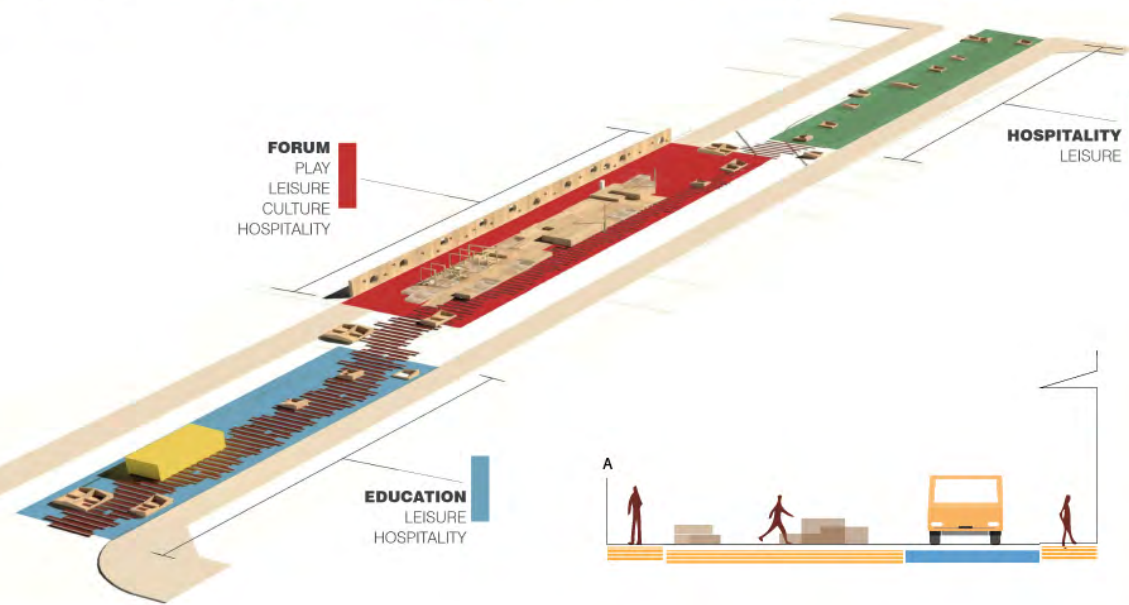


# Design Development



OVERALL PLAN / 1:200 @ A1

- CAR LANE
- CAR DIRECTION
- PLATFORMS
- PLAY SPACES
- PLANTERS
- STREET PAINT
- INFORMATION CONTAINER
- EXISTING ARTIST FENCE
- LOADING ZONES
- FIRE HYDRANT
- OUTDOOR SPACES FOR BUSINESSES TO OCCUPY
- CYCLE RACK

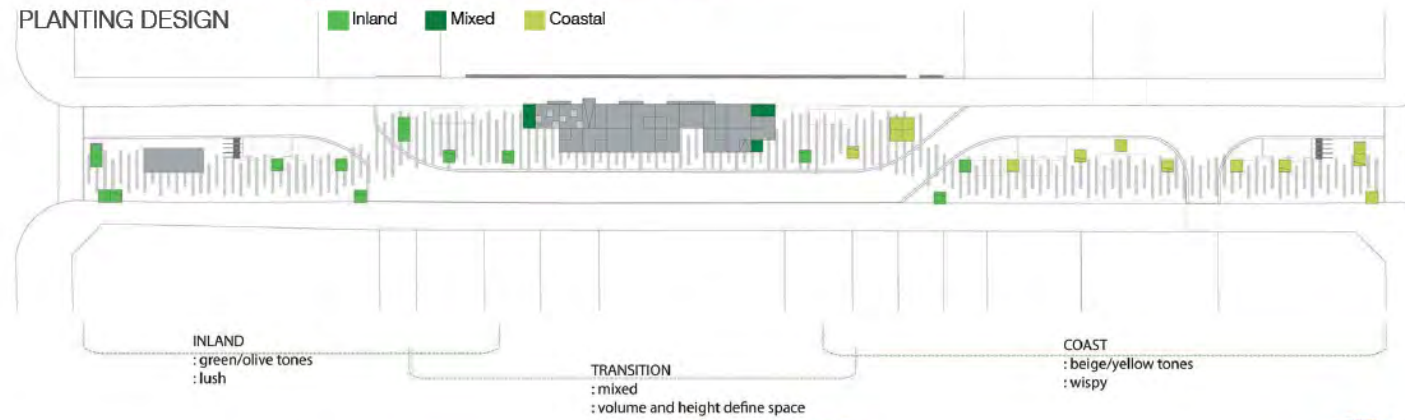




# Implementation

## PLANTING DESIGN

Inland Mixed Coastal



The planting concept symbolises a journey from inland to coast. It progresses from inland plants (near the Courtenay Place end) through mixed planting to coastal plants (at the Wakefield Street end).

The plants we've used for Re-imagine Tory Street are all native - some of which are rare, threatened or endangered. The selected plants can be found in a wide range of New Zealand landscapes.

The 33 planters are abstractions of different New Zealand landscapes, with plants placed on the top of micro topographies partially covered by gravels.

The plants have been carefully chosen and grouped in low lying compositions that range from inland to coast. Plants are suitable for low-maintenance planting and able to manage dry and windy environments.



Planter #4. Inland. Ground covers. Grasses. Sub shrubs.

Planter #20. Inland/Coast. Grasses. Sedges.

Planter #26. Coast. Ground covers. Grasses. Subshrubs.

