

STATIONAL ARCHITECTURE ON THE WAY TO VILA VIÇOSA:  
THE NEW PEDESTRIAN AND CYCLING LANE OF THE ESTREMOZ ANTICLINE



Country / City  
University / School  
Academic year  
Title of the project  
Authors

Italy, Milan  
Politecnico di Milano  
2017 - 2018  
Stational Architecture on the way to Vila Viçosa: the new pedestrian and cycling lane of the Estremoz Anticline  
Bracchetti Chiara, Piva Francesca, Spinelli Serena







# PERFORMATIVE NATURE

Barcelona International Landscape Architecture Biennial

September 2018 **Barcelona**

SCHOOL PRIZE

X International Landscape Architecture Biennial

Máster d'Arquitectura del Paisatge -DUOT - UPC

ETSAB- Escola Tècnica Superior

d'Arquitectura de Barcelona

Avenida Diagonal, 649 piso 5

08028 Barcelona-Spain

## TECHNICAL DOSSIER

Title of the project . Stational Architecture on the way to Vila Viçosa: the new pedestrian and cycling lane of the Estremoz Anticline .....

Authors . Bracchetti Chiara, Piva Francesca, Spinelli Serena .....

Title of the course . Master thesis .....

Academic year . 2017-2018 .....

Teaching Staff . Professor: Cristina Pallini; Correlators: Aleksa Korolija, Silvia Boca .....

Department/Section/Program of belonging . School of Architecture, urban planning, construction engineering .....

University/School . Politecnico di Milano .....

### Written statement, short description of the project in English, no more than 250 words

The project concerns a process of territorial and landscape re-evaluation in Portugal, in the region of Central Alentejo, in particular on the Estremoz Anticline, involving the towns of Estremoz, Borba and Vila Viçosa.

Due to a situation of abandonment of the quarries and the decline of the field of the marble extraction, today, the landscape is characterized by a wide presence of inactive industries coexisting with the colourful panorama of the agricultural landscape. In the last decade the municipalities have tried to re-enhance these spaces to the population with theatre and music events.

Starting from these considerations we have designed a strategy for the Anticlinal de Estremoz. The designed pedestrian and cycling path is a spatial tool capable of rediscover the rural, mining and urban landscape of the villages.

In the second planning phase we focused on Vila Viçosa, a small town in the region. The project we propose is a museum- theatre in the quarry of Gradinha, which is set in an area that represents the synthesis of historical and natural features of this landscape.

The building has been conceived as a ramp-shaped linking element that creates spaces like the museum and the theatre.

With this project we intend to reconnect the landscape of the Estremoz Anticline by reactivating and implementing elements that could boost the tourism economy on a territorial scale and reconnect the disrupted units of the landscape through the museum-theatre, also seeing the project as a potential example of architecture reproducible in other quarries of the Alentejo.

For further information

**Máster d'Arquitectura del Paisatge -DUOT - UPC**

T: + 34 93 401 64 11 / +34 93 552 0842

Contact via email at: [biennial.paisatge@upc.edu](mailto:biennial.paisatge@upc.edu)

Consult the web page <http://landscape.coac.net/>



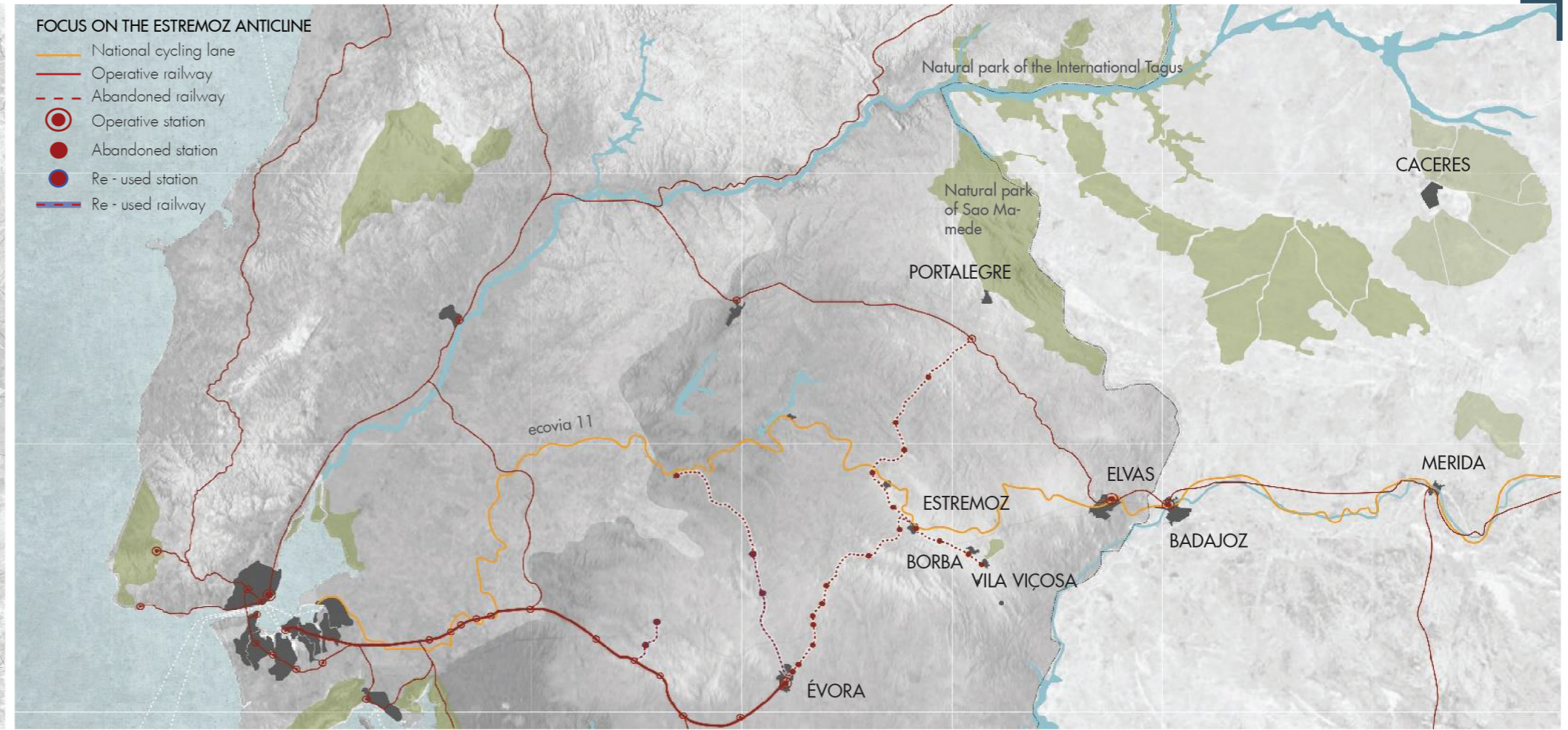
### PORTUGAL RAILWAY ANALYSIS

Analysis of the railway and road network on the area of Central Alentejo and the corridor linking Lisbon and Madrid.



### FOCUS ON THE ESTREMOZ ANTICLINE

- National cycling lane
- Operative railway
- - - Abandoned railway
- Operative station
- Abandoned station
- Re - used station
- Re - used railway



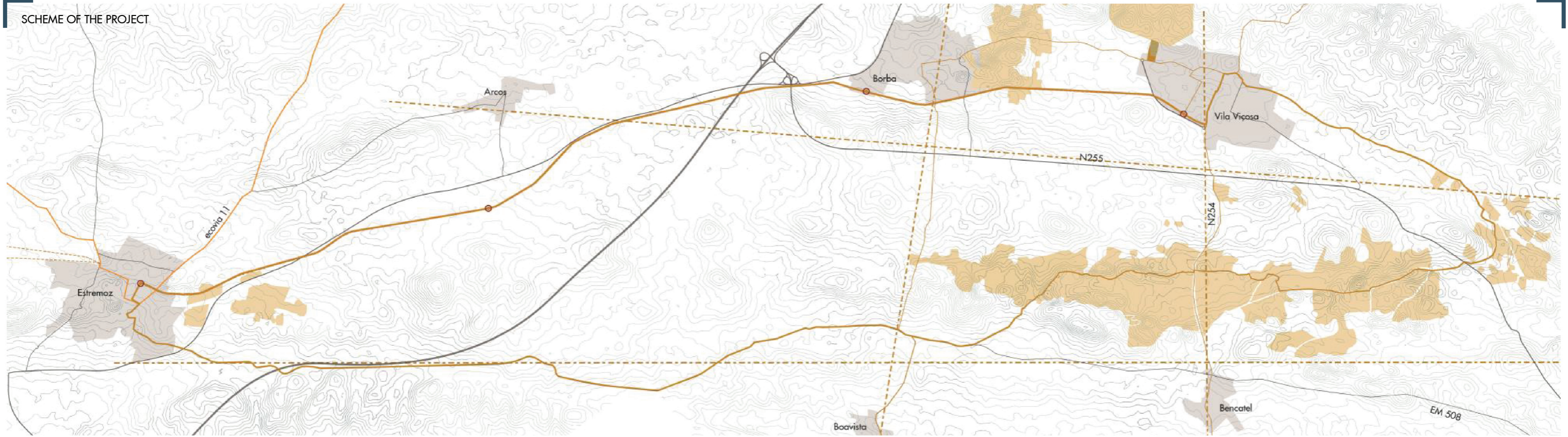
### LANDSCAPE ANALYSIS ON THE ABANDONED VILA VIÇOSA RAILWAY TRACK

The compresence on the area of peculiar elements such as quarries, a mainly agricultural landscape and the presence of an abandoned railway track brought us to develop a project on a territorial scale reusing the abandoned permanent way. We designed a cycling and pedestrian lane that connects all the urban centers passing through the former railway track. Moreover, the path proceeds into the extractive and agricultural landscape.





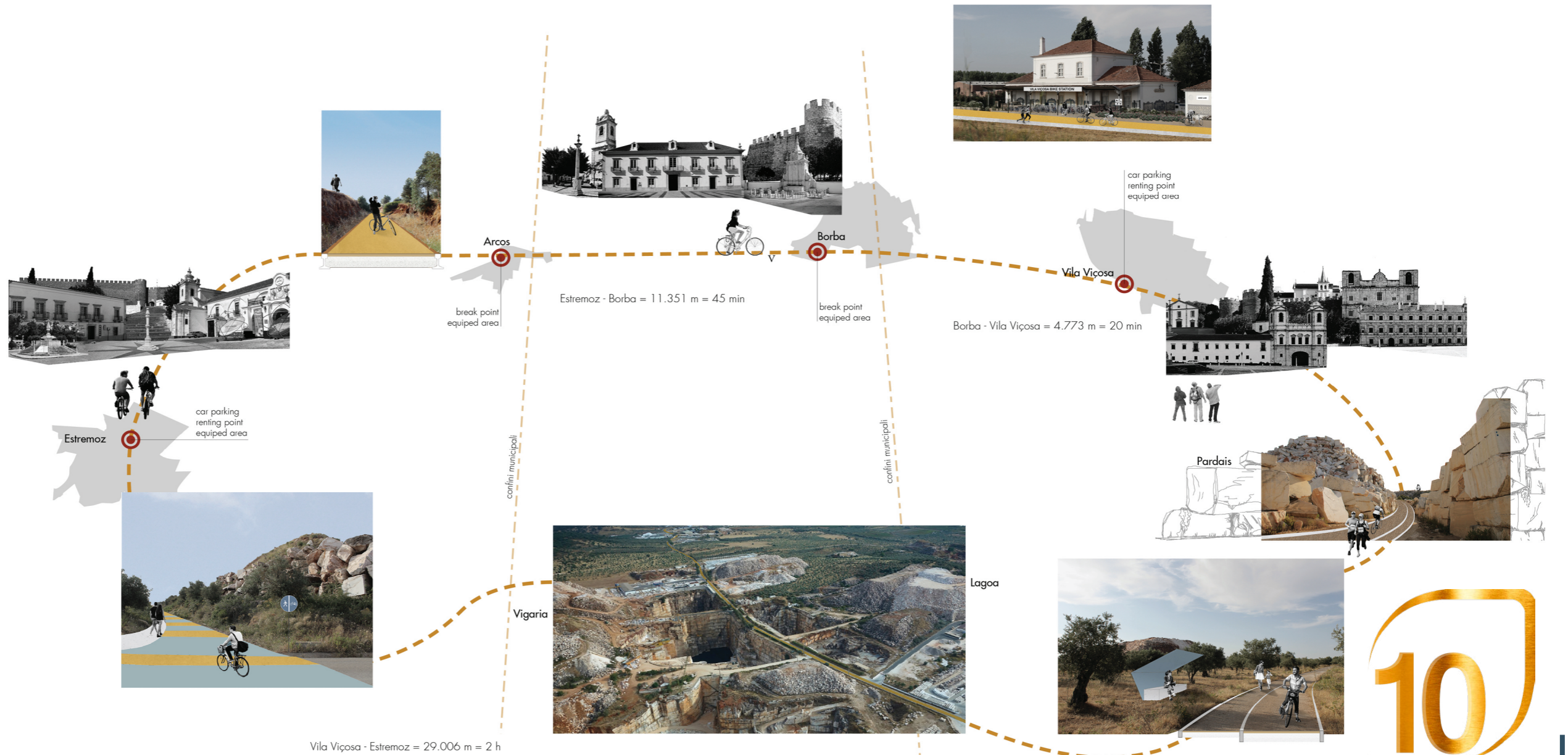
SCHEME OF THE PROJECT



In the scheme are enlightened the main areas of landscape value, such as the Tapada Real, the former hunting park of the Portuguese royal family, the extractive areas and the urban centers linked by the former railway track.  
Four axes have been selected in order to include all those elements into the pedestrian and cycling lane project.

On the north side, starting from Estremoz the path follows the railway track towards Vila Viçosa, passing through Arcos and Borba. Instead, in the southern side it passes through the extraction areas of Lagoa and Vigaria, again into the agricultural fields, closing the loop in Estremoz.

The **stations** on the path are considered as "gates" to each town providing renting points for bikes, **restoration areas**, and among all certain **break points** on the way conceived as miradouro which are areas to admire the landscape.





# THE STATIONAL PROJECT: THE THEATER-MUSEUM

