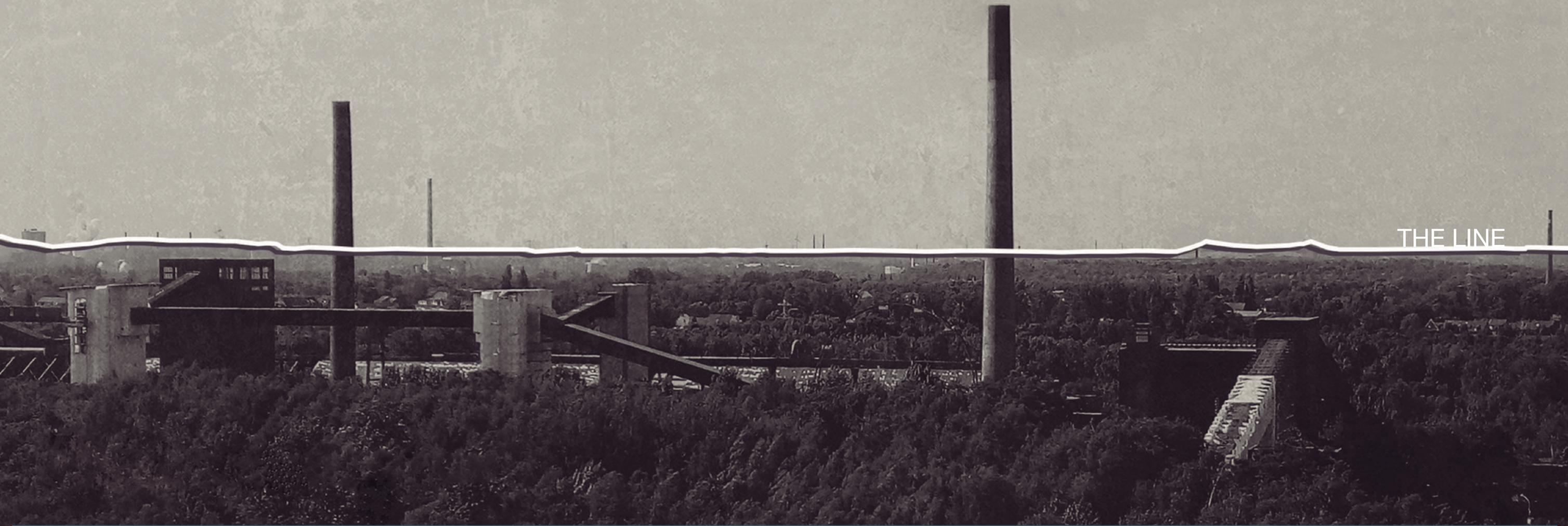
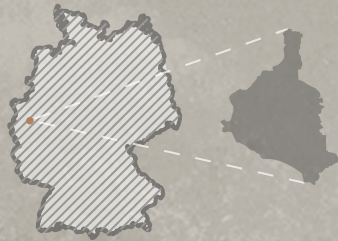
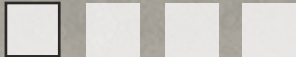


LOCATION: GERMANY - GLADBECK



Country / City ..... Argentina.....  
University / School..... Universidad Nacional del Litoral.....  
Academic year ..... 2017.....  
Title of the project..... THE LINE.....  
Authors ..... BARTOLONI Gisela, BRUNDAITE Carolina, CARDOZO Joaquín, HERMANOVICH Nazaret, SCHMIDT Maria Jose.....







# PERFORMATIVE NATURE

Barcelona International Landscape Architecture Biennial

September 2018 **Barcelona**

## SCHOOL PRIZE

X International Landscape Architecture Biennial

Máster d'Arquitectura del Paisatge -DUOT - UPC  
ETSAB - Escola Tècnica Superior  
d'Arquitectura de Barcelona  
Avenida Diagonal, 649 piso 5  
08028 Barcelona-Spain

## TECHNICAL DOSSIER

Title of the project	THE LINE
Authors	BARTOLONI Gisela, BRUNDAITE Carolina, CARDOZO Joaquín, HERMANOVICH Nazaret, SCHMIDT Maria Jose
Title of the course	International Workshop Osnabrück 2017 - "Gladbeck _ Mottbruchhalde II"
Academic year	2017
Teaching Staff	Professors Miguel Vitale, Mónica Castillo, Alicia Follonier, Carlos Kakisu.
Department/Section/Program of belonging	Taller Proyectoal en Morfología Urbana -TPMU
University/School	Universidad Nacional del Litoral

### Description:

The project is related with identifying, revealing and enhancing, to adapt to what is already there, the "real" landscape and its specific qualities.

The site reconnaissance unveiled the Mottbruchhalde imprint from the reading of it as a line in the landscape, perceived from the distance, from near and from different points of view.

This morphologic abstraction carried the idea of the project like a subtle intervention that make reference to The Line, whose goal is conceive the conditions to live different experiences on the landscape, recognizing and remembering the identity of the site as a mining industry.

Technologically we took a minimalist approach, reducing materials to corten steel -for its landscape integration- and the use of different elements strategically placed along the path who reevaluate and enhance the landscape. Each one of this elements is connected along The Line join the path on a dynamic way depending the atmosphere that we want to create.

The top of the Mottbruchhalde turned into an unexpected space, materialized through a plate shaped element that enhances that feeling on the user. This object is insinuated along the path with the purpose of generating intrigue on the subject, giving it rise to finish the trail.

For further information

Máster d'Arquitectura del Paisatge -DUOT - UPC

T: + 34 93 401 64 11 / +34 93 552 0842

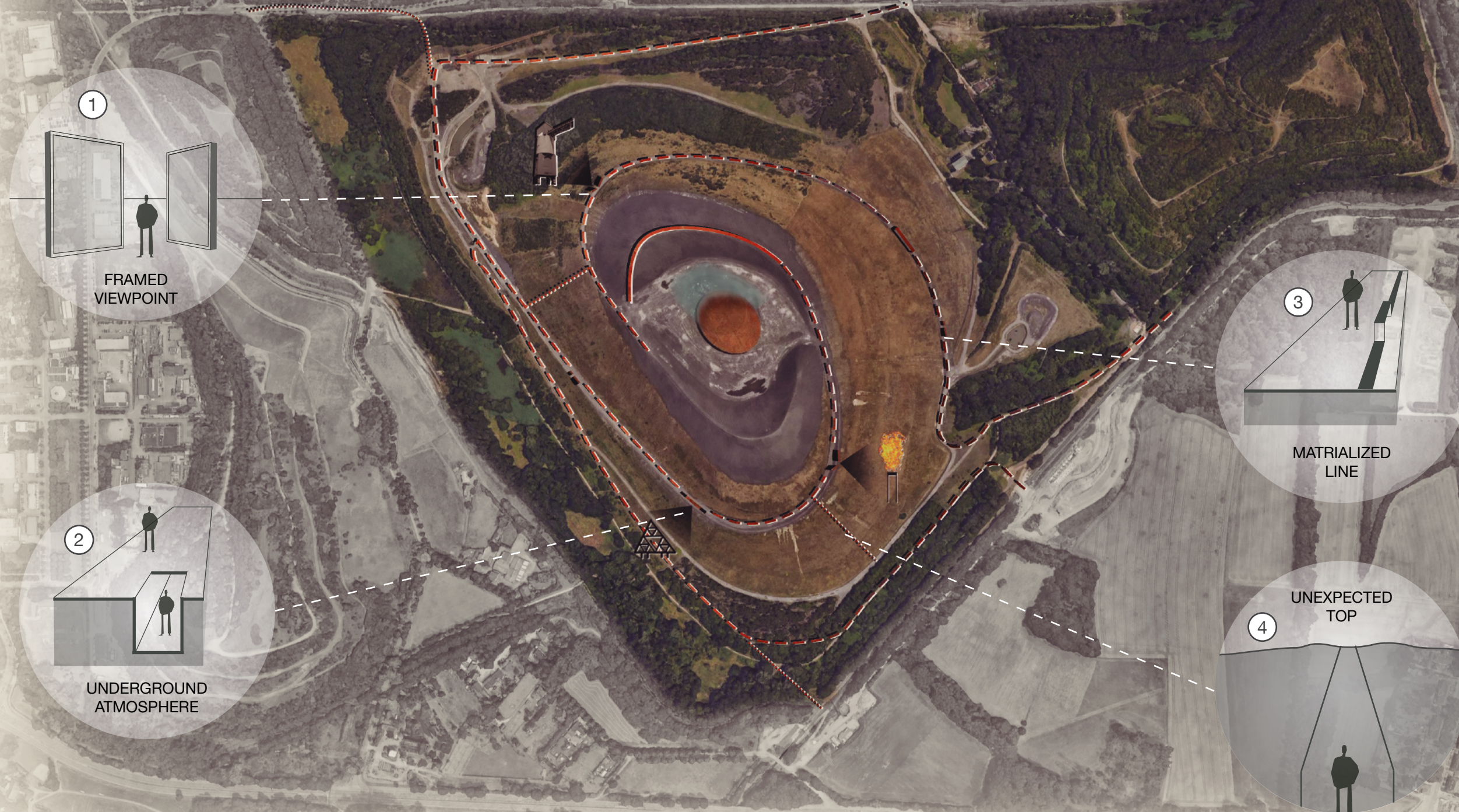
Contact via email at: [biennial.paisatge@upc.edu](mailto:biennial.paisatge@upc.edu)

Consult the web page <http://landscape.coac.net/>



# THE LINE

## MOTTBRUCHHALDE'S MASTER PLAN





# THE LINE

## INTERVENTIONS ALONG THE MOTTBRUCHHALDE





# THE LINE

## THE TOP OF MOTTBRUCHHALDE

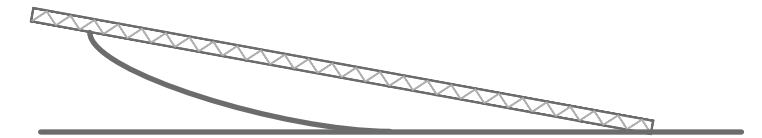
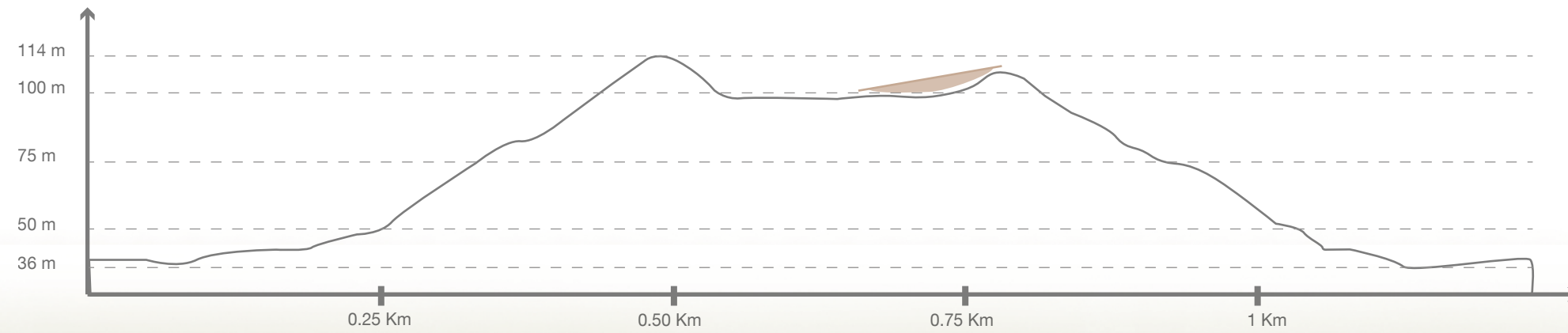


PLATE STEEL STRUCTURE

The idea is hide the support structure to generate the feeling of an ingravitale element.

