



Country / City **ARGENTINA / Santa Fe / La Capital**

University / School **UNIVERSIDAD NACIONAL DEL LITORAL / FACULTAD DE ARQUITECTURA DISEÑO Y URBANISMO**

Academic year **2017**

Title of the project **THE WATER CYCLE**

Authors **CAROLLO, Nicolás Francisco; DAYUB, Juan Manuel; MATTEODA, Florencia**





PERFORMATIVE NATURE

Barcelona International Landscape Architecture Biennial

September 2018 **Barcelona**

SCHOOL PRIZE

X International Landscape Architecture Biennial

Máster d'Arquitectura del Paisatge -DUOT - UPC
ETSAB- Escola Tècnica Superior
d'Arquitectura de Barcelona
Avenida Diagonal, 649 piso 5
08028 Barcelona-Spain

TECHNICAL DOSSIER

Title of the project	THE WATER CYCLE
Authors	CAROLLO, NICOLÁS FRANCISCO; DAYUB, JUAN MANUEL; MATTEODA, FLORENCIA
Title of the course	TALLER PROYECTUAL DE MORFOLOGÍA URBANA
Academic year	2017
Teaching Staff	VITALE, MIGUEL; KAKISU CARLOS; CASTILLO, MÓNICA; FOLLONIER, MARÍA ALICIA
Department/Section/Program of belonging	ÁREA DE DISEÑO - PLAN ACADÉMICO 2001
University/School	UNIVERSIDAD NACIONAL DEL LITORAL - FACULTAD DE ARQUITECTURA DISEÑO Y URBANISMO

Located in **Santa Fe** city (**Argentina**) it's "**The Federal Park**", which consist on a 270.000m² yard right at the city's core. During the XX century, it served as support infrastructure for the railroad machinery's repair and maintenance, while the train was still in service. It was recovered for public use in 2009, after almost 20 years of abandon, now it's the city's largest green lung. With the added value of the remains of technical buildings, such as train depot, water tanks, distribution platform, all of them have no longer use.

Understand **Time** itself as an ingredient. By twisting **Time**, a blend between Past-Present can be made. Looking backwards in **time-space**, recovering the old infrastructure, and ambience. The cycle displays itself as educational school/family oriented complex. With Past and Present as departure ideas. There's the proposal to generate consciousness about the usage of water, home crop, green electrical power, with **water**, as the main character in the stage.

The Water Cycle consist on a **semi-open full-cycle** where water experience different transformations in order the fulfill the so called Cycle. With chemical and state transformations, produced in station **self-supplied** by sunrays, collected with parabolic mirrors to overheat water flowing in a straight pipe, in order to drive the power turbines. Releasing just Steam, and a mechanic noise, retrieving the old train times, where steam and train noise were all day long raging on the yard.

For further information

Máster d'Arquitectura del Paisatge -DUOT - UPC

T: + 34 93 401 64 11 / +34 93 552 0842

Contact via email at: biennial.paisatge@upc.edu

Consult the web page <http://landscape.coac.net/>

SANTA FE'S FEDERAL PARK

Location



Argentina

Santa Fe



City of Santa Fe

City's Core: a 270.000m² park



Entry to the park



Abandoned train's infrastructure (1989)



Recovered for people in 2009



SURROUNDED BY WATER
SANTA FE'S MOST FEARED THREAT

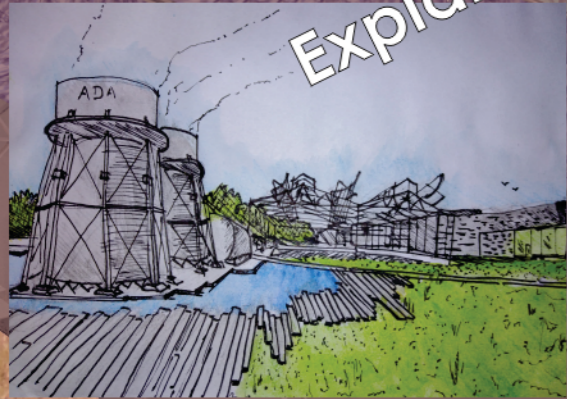


The largest green lung in town

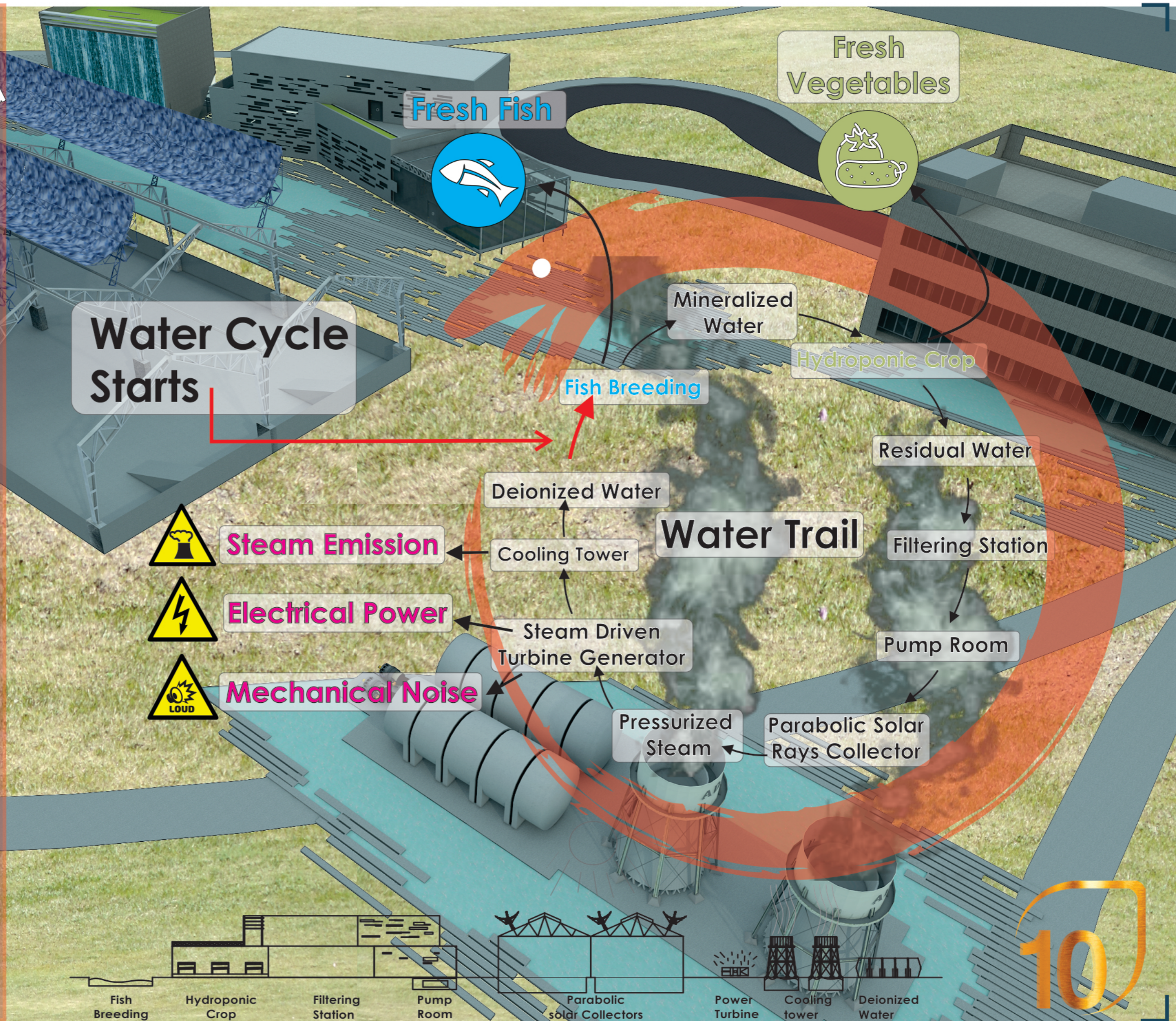


THE WATER CYCLE

Explained



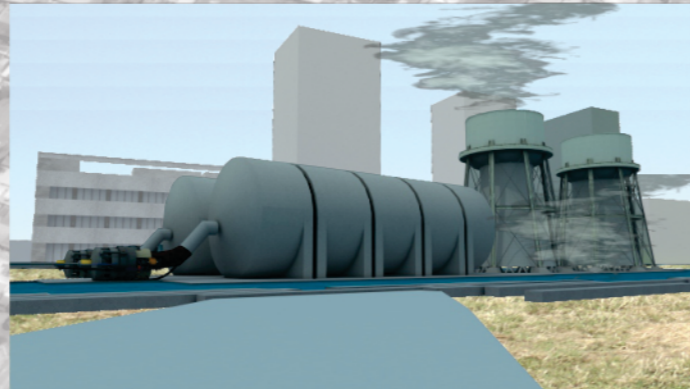
The **Uroboros** is an ancient symbol depicting a serpent eating its own tail. Originating in ancient Egyptian iconography, represents the infinite cycle of nature's endless creation and destruction, life and death. Is the way that **The Water Cycle** is described.



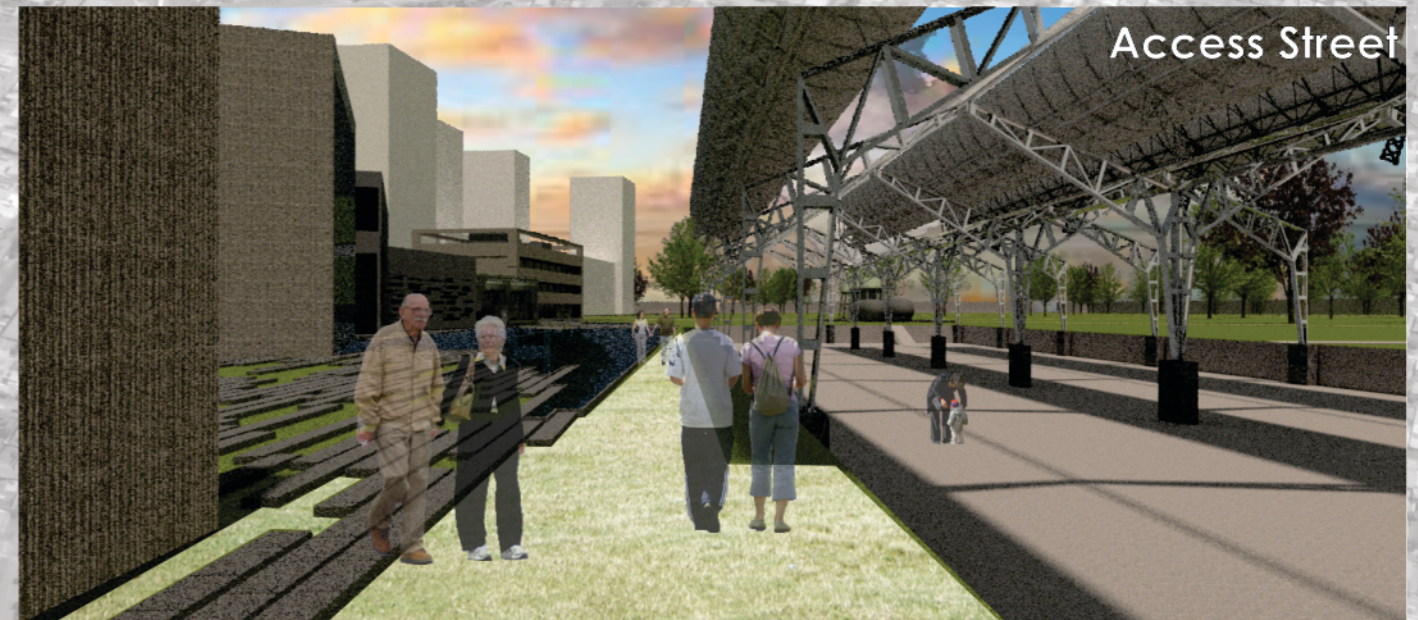
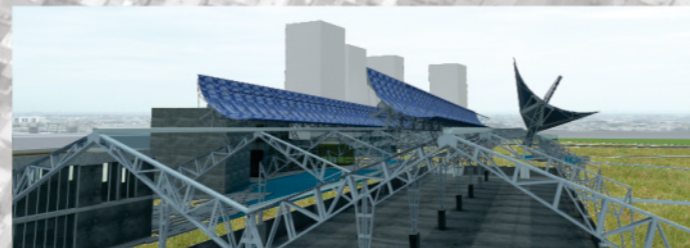
THE WATER CYCLE

Existing Element's Recovery:

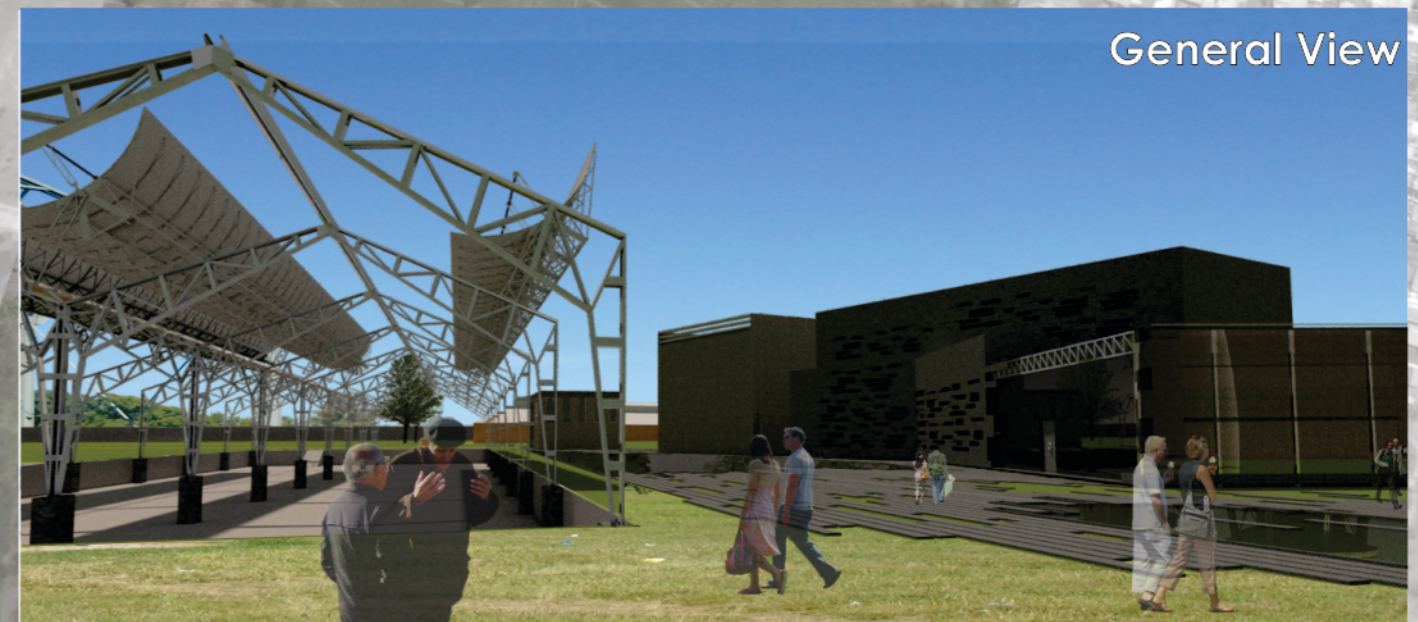
Existing Element's Recovery:
from water tanks to cooling towers



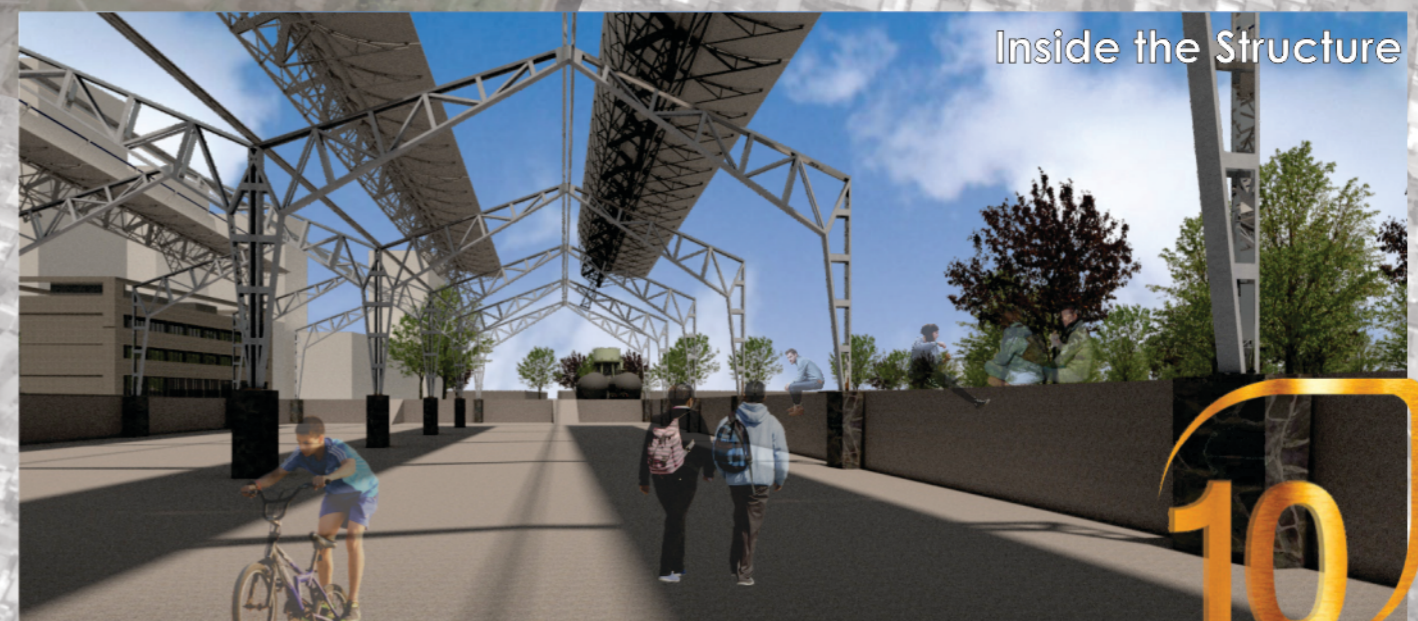
Parabolic solar collectors on the roof



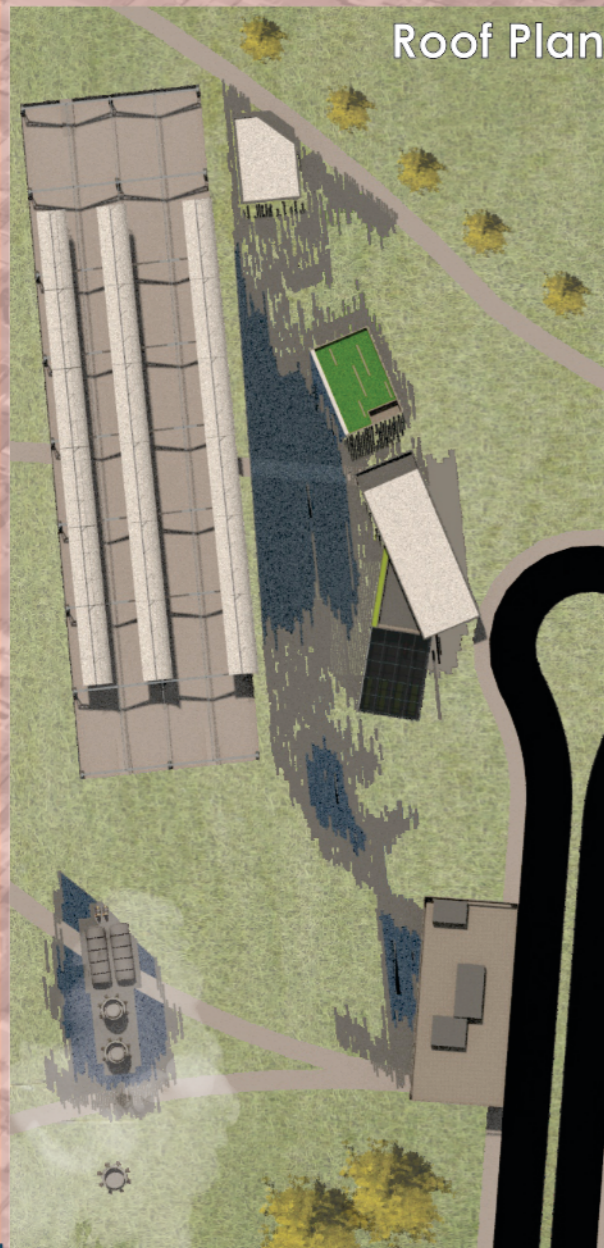
Access Street



General View



Inside the Structure



Roof Plan