

流水穿梭

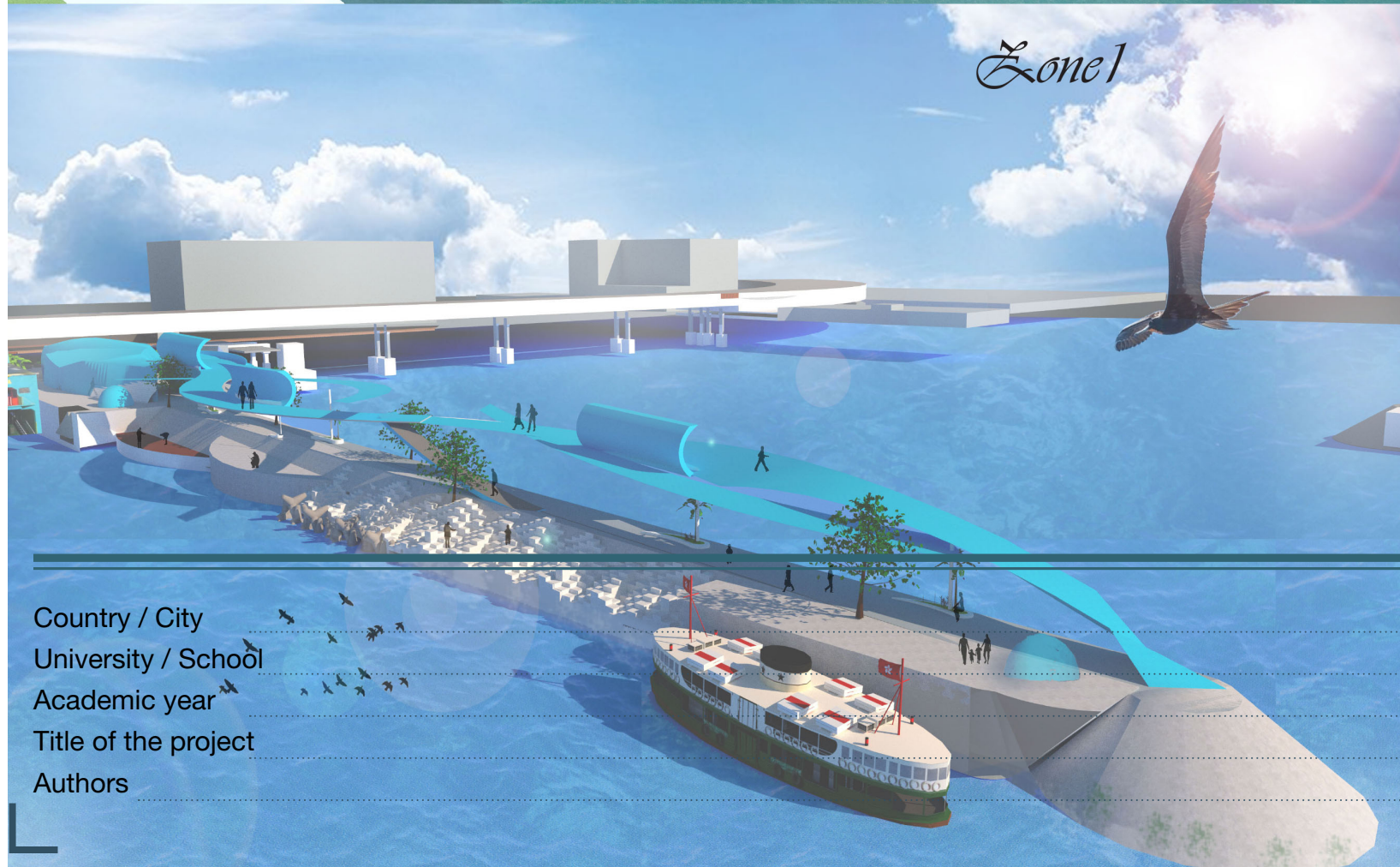
Strait Land

避風塘抵擋了滔滔巨浪，留下緩緩流水，使船隻安全停泊。流水帶來更新，令生物得以生存。

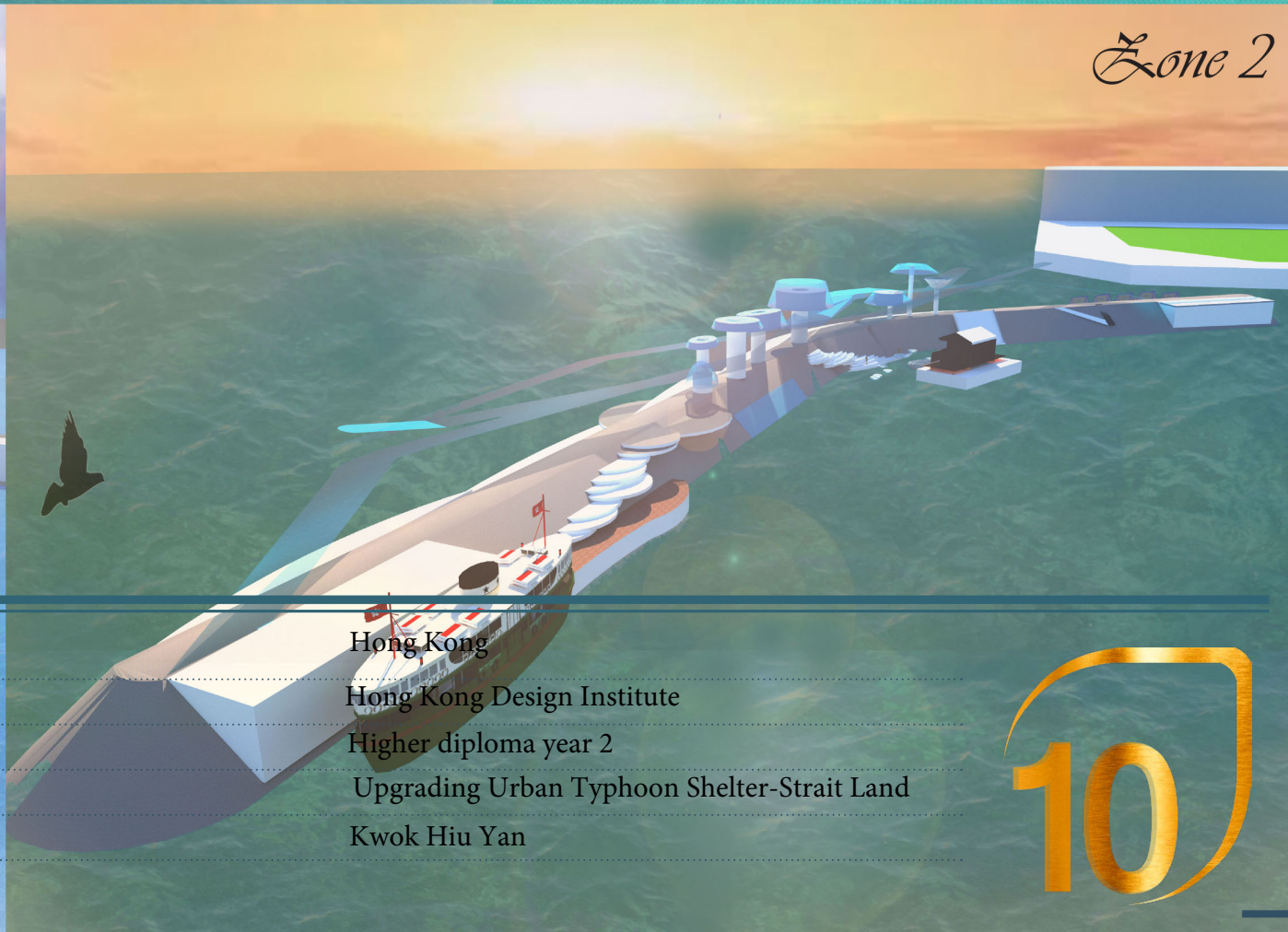
The typhoon shelter resisted the surging waves, leaving a slow flow of water to make the ships safe to park. Water brings renewal to make survive.



Isometric



Zone 1



Zone 2

Country / City
University / School
Academic year
Title of the project
Authors

Hong Kong
Hong Kong Design Institute
Higher diploma year 2
Upgrading Urban Typhoon Shelter-Strait Land
Kwok Hiu Yan



PERFORMATIVE NATURE

Barcelona International Landscape Architecture Biennial

September 2018 **Barcelona**

SCHOOL PRIZE

X International Landscape Architecture Biennial

Máster d'Arquitectura del Paisatge -DUOT - UPC

ETSAB- Escola Tècnica Superior

d'Arquitectura de Barcelona

Avenida Diagonal, 649 piso 5

08028 Barcelona-Spain

TECHNICAL DOSSIER

Title of the project	Upgrading Urban Typhoon Shelter -Strait Land
Authors	Kwok Hiu Yan
Title of the course	Higher diploma of landscape architecture
Academic year	2017/2018
Teaching Staff	
Department/Section/Program of belonging	Department of Architecture, Interior and Product Design/ Higher diploma of landscape architecture
University/School	Hong Kong Design Institute

Written statement, short description of the project in English, no more than 250 words

Hong Kong have many typhoon shelters but only have a few of it have developed, and it also just a simple design promenade. I choose Kwun Tong to be my site because it is very high-Density development place and need open space. It is also in a convenient transportation place. My design divide to two zone and includes different attractions for different target users.

Zone 1 's target user is worker so that the activity is gentler like skywalk, cube stairs, under water tunnel. It mainly use for strolling and know about biology relationship between typhoon shelter operations at the same time.

Zone 2 's target users is family and teenager, so the activity is more exciting. It included play water zone ' playground and stage. It also has sightseeing tower and skywalk for catch the view and consistent the zone1.

For further information

Máster d'Arquitectura del Paisatge -DUOT - UPC

T: + 34 93 401 64 11 / +34 93 552 0842

Contact via email at: biennial.paisatge@upc.edu

Consult the web page <http://landscape.coac.net/>

流水穿梭 Strait Land

The typhoon shelter resisted the surging waves, leaving a slow flow of water to make the ships safe to park. Water brings renewal to make survive.

Concept statement

For the above problem ,design will theme to water and divided into two parts are touch water zone and green space. It provide more open space for everyone and connect human and amazing urban wild life at the same time.

Upgrading Urban Typhoon Shelter

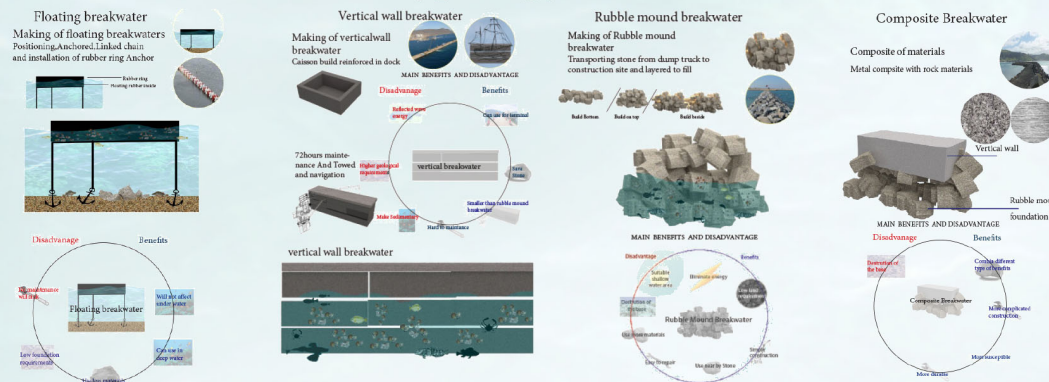
-Kwun Tong Typhoon Shelter breakwater only have a funtion but it is a gare place have well scenery and location.

Definition:

Typhoon Shelter: A sheltered space for the protection of local vessels and river trade vessels during typhoons and inclement weather conditions

Breakwater: Breakwater may be construted to form a harbour or typhoon shelter and create sufficiently calm water,thereby providing protection for safe navigation,berthing and mooring of vessels , and other activities.

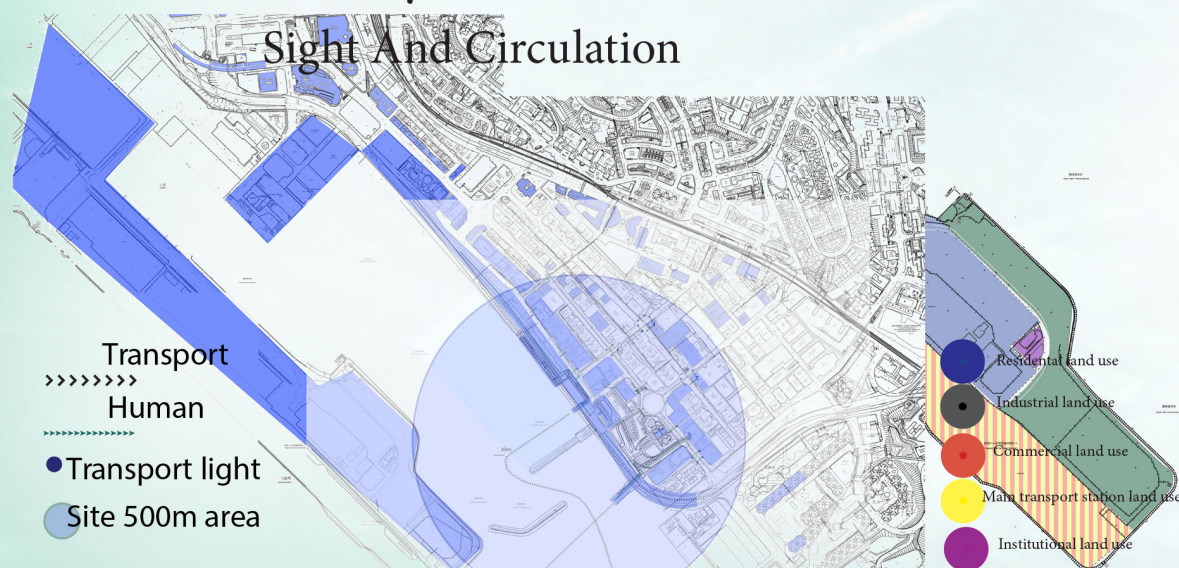
Typology



Hong Kong Typhoon Shelter Analysis Amount



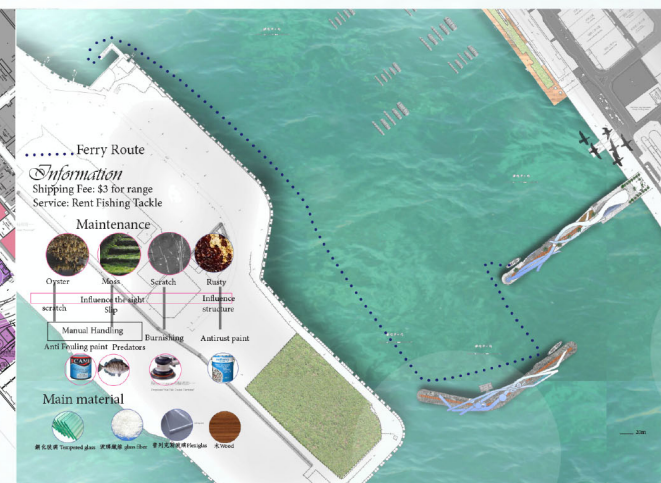
Site Study(Distributional)



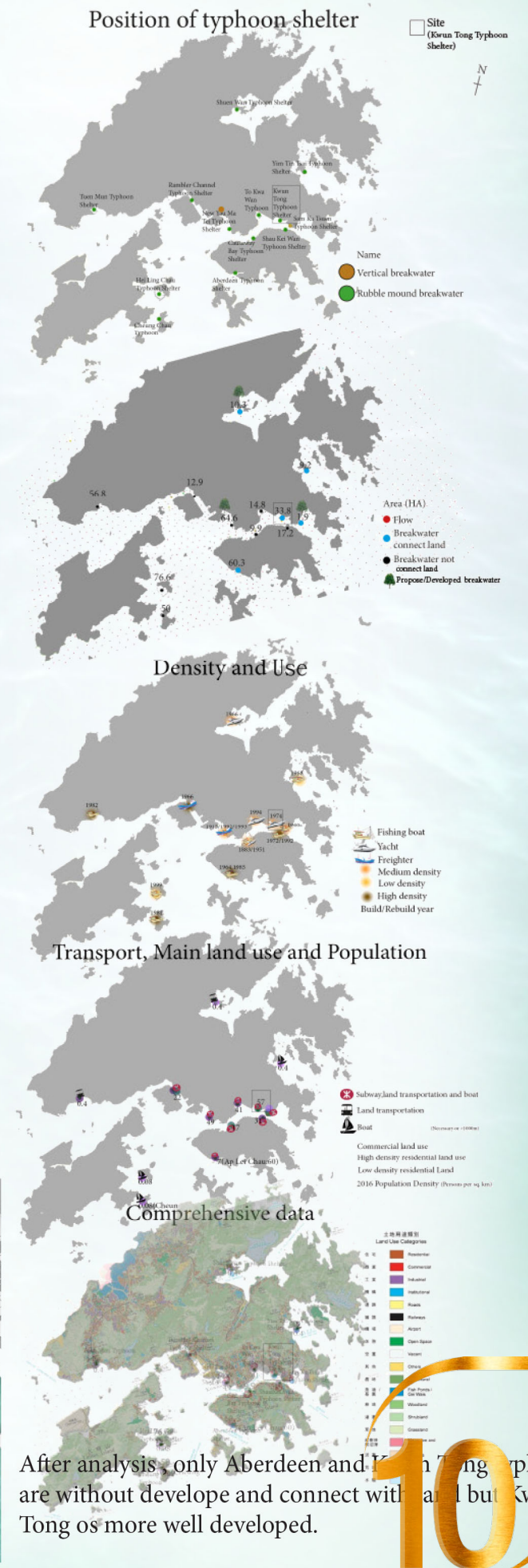
Land Use



Design Plan



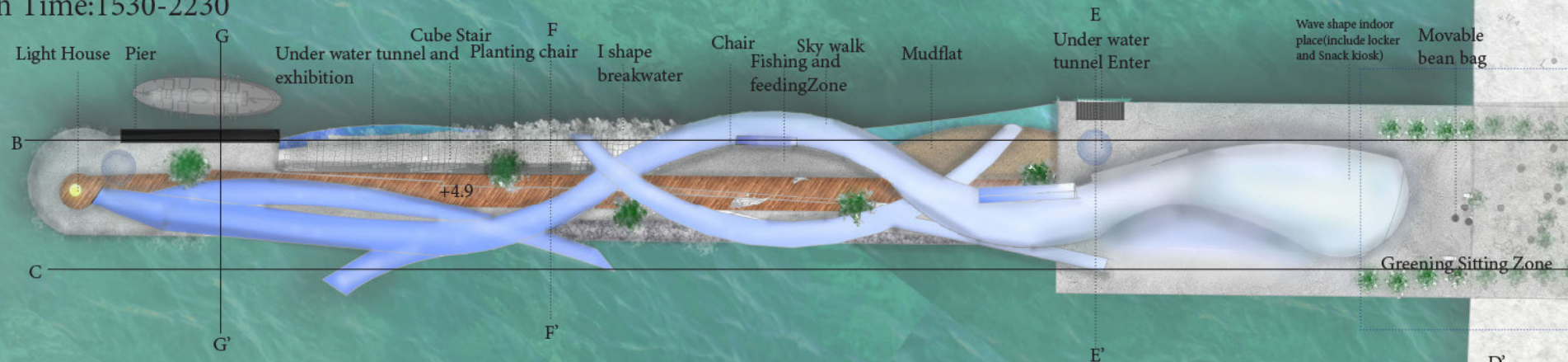
Hong Kong Typhoon Shelter Analysis



Zone1-flow Land

Stay in water flow, feel the sea animals

Open Time:1530-2230

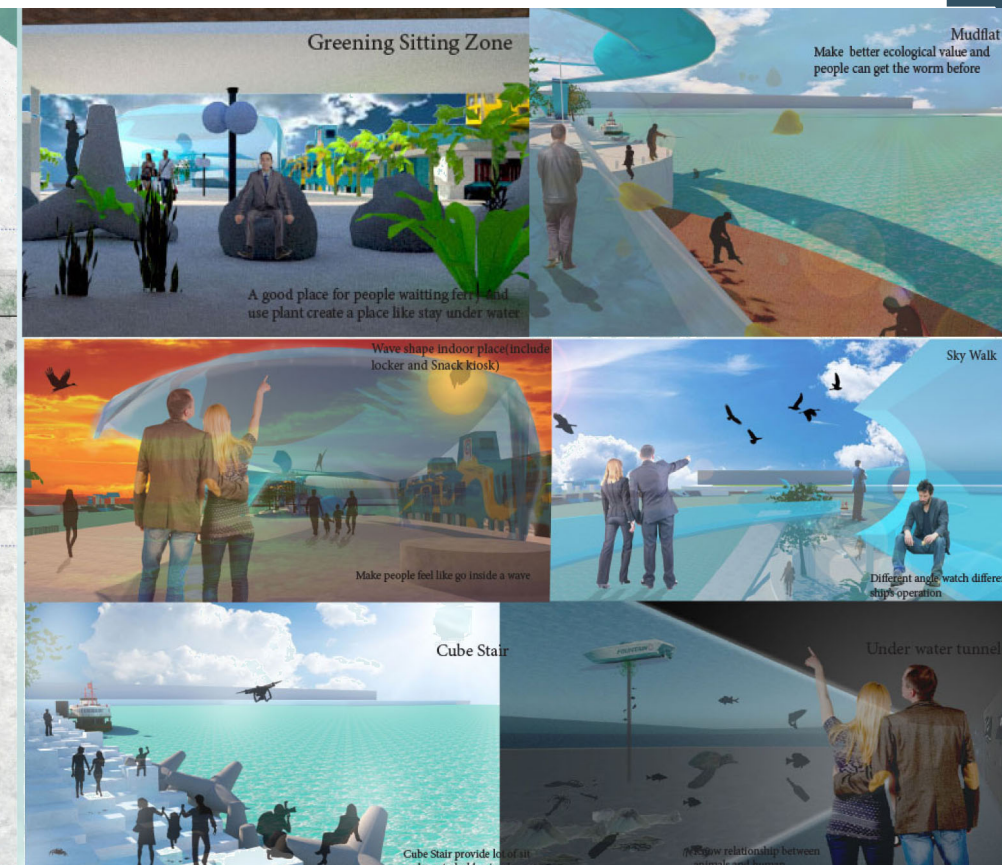
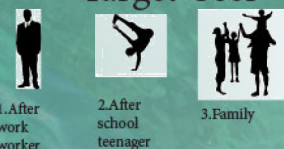


Atmosphere:

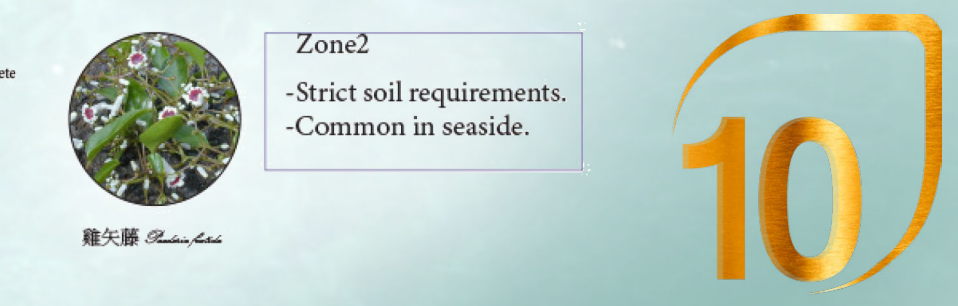
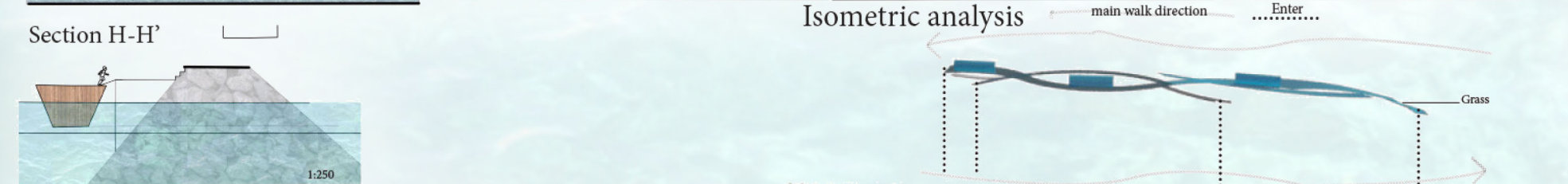
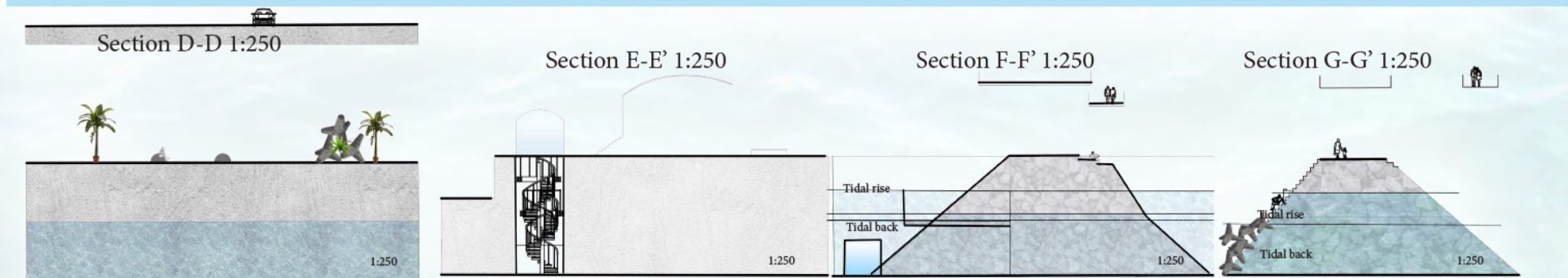
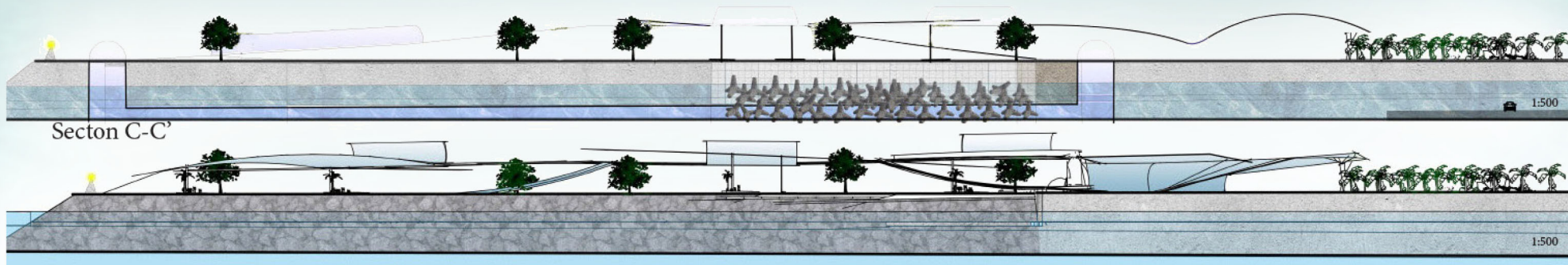
Exciting
Warm Romantic Quiet
Comfortable Relax

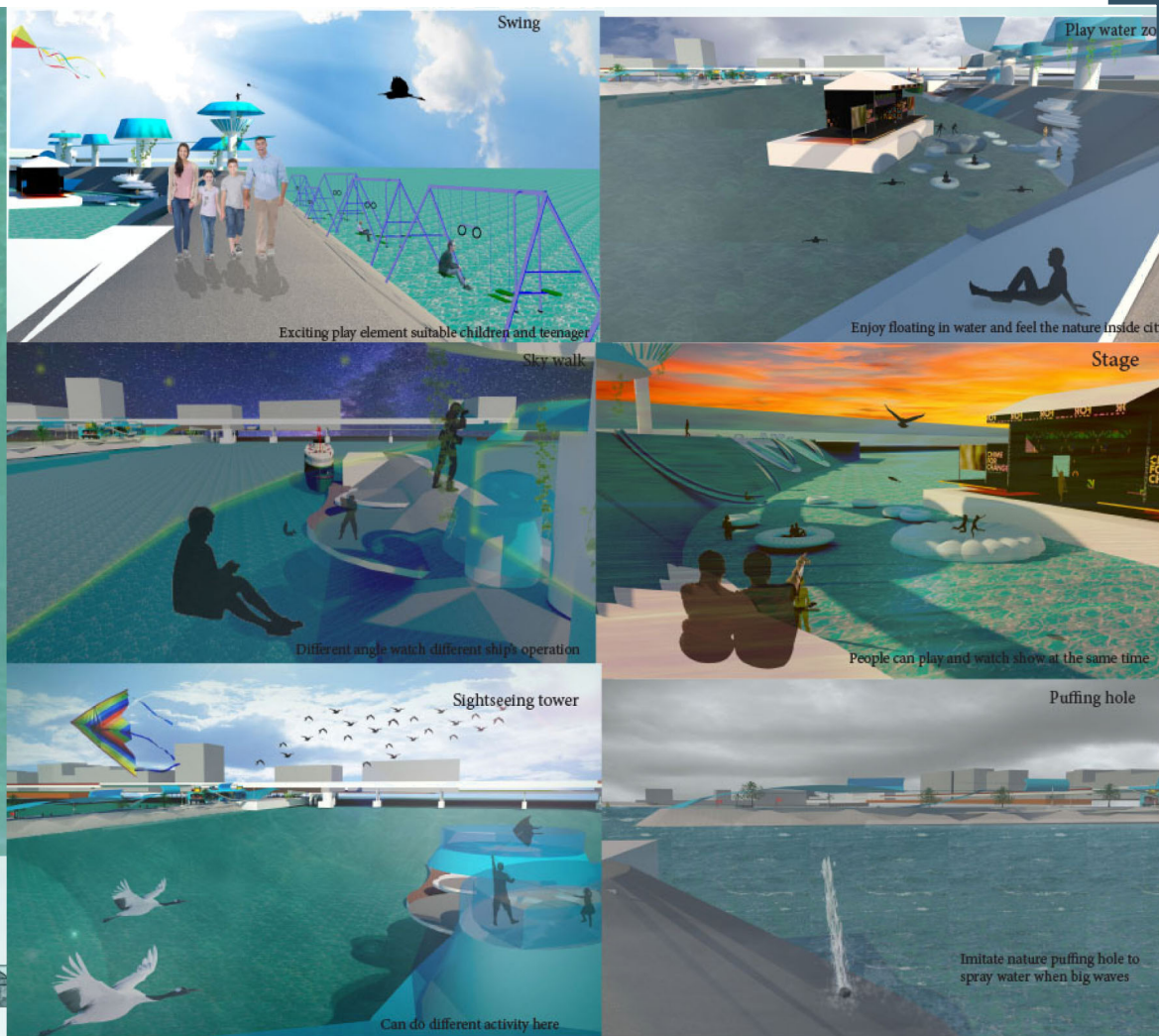
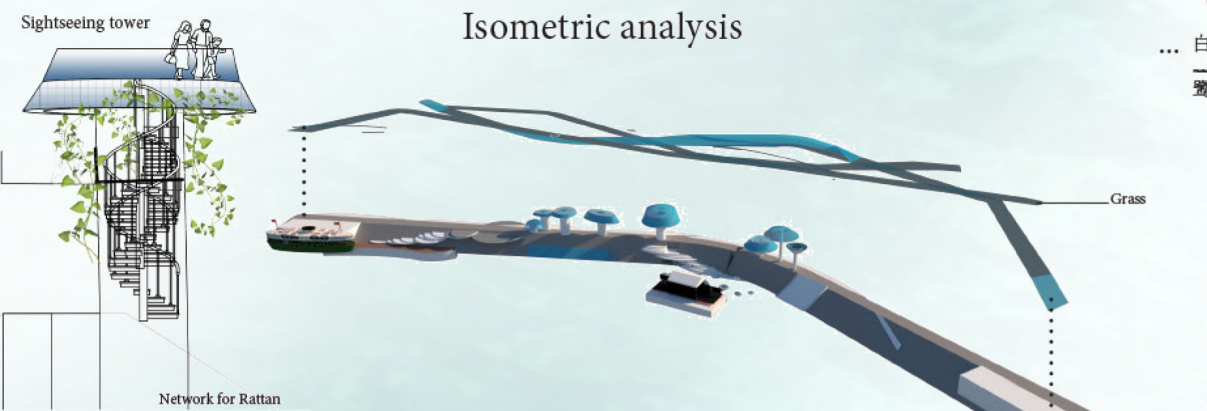
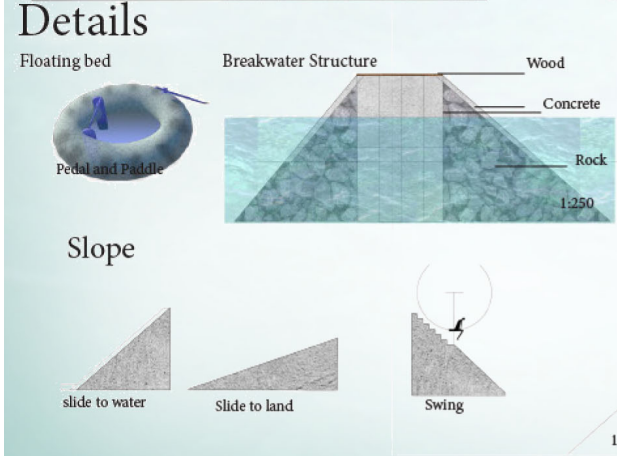
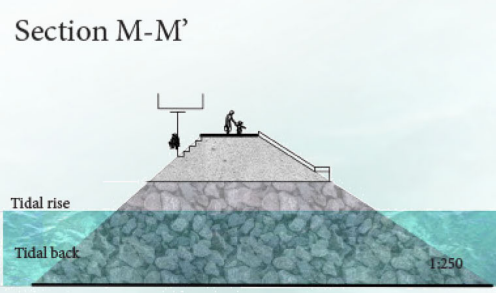
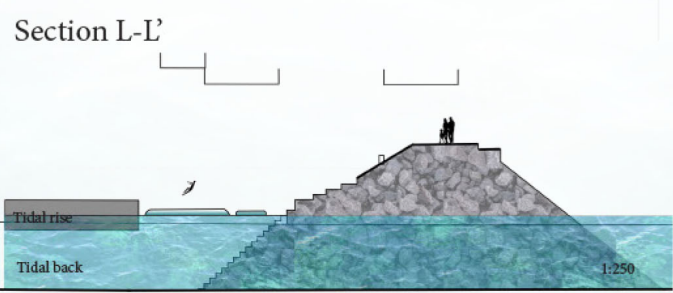
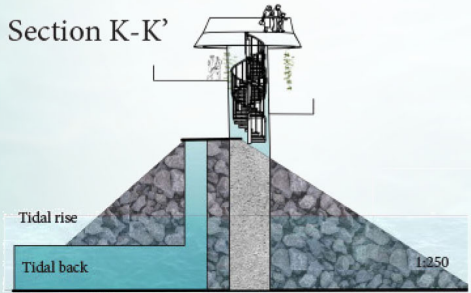
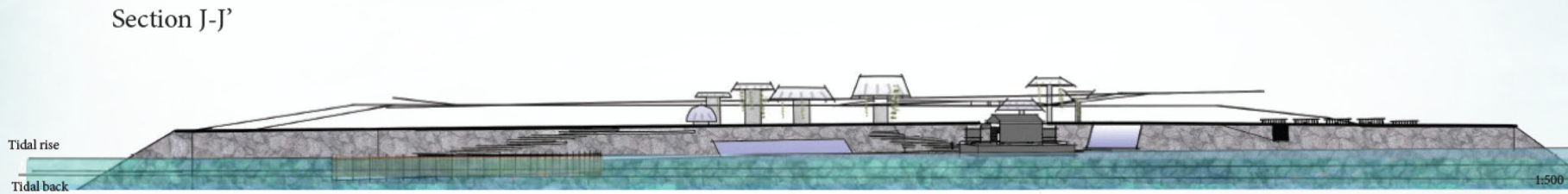
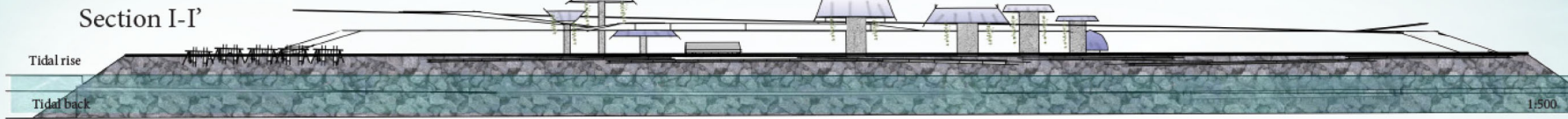
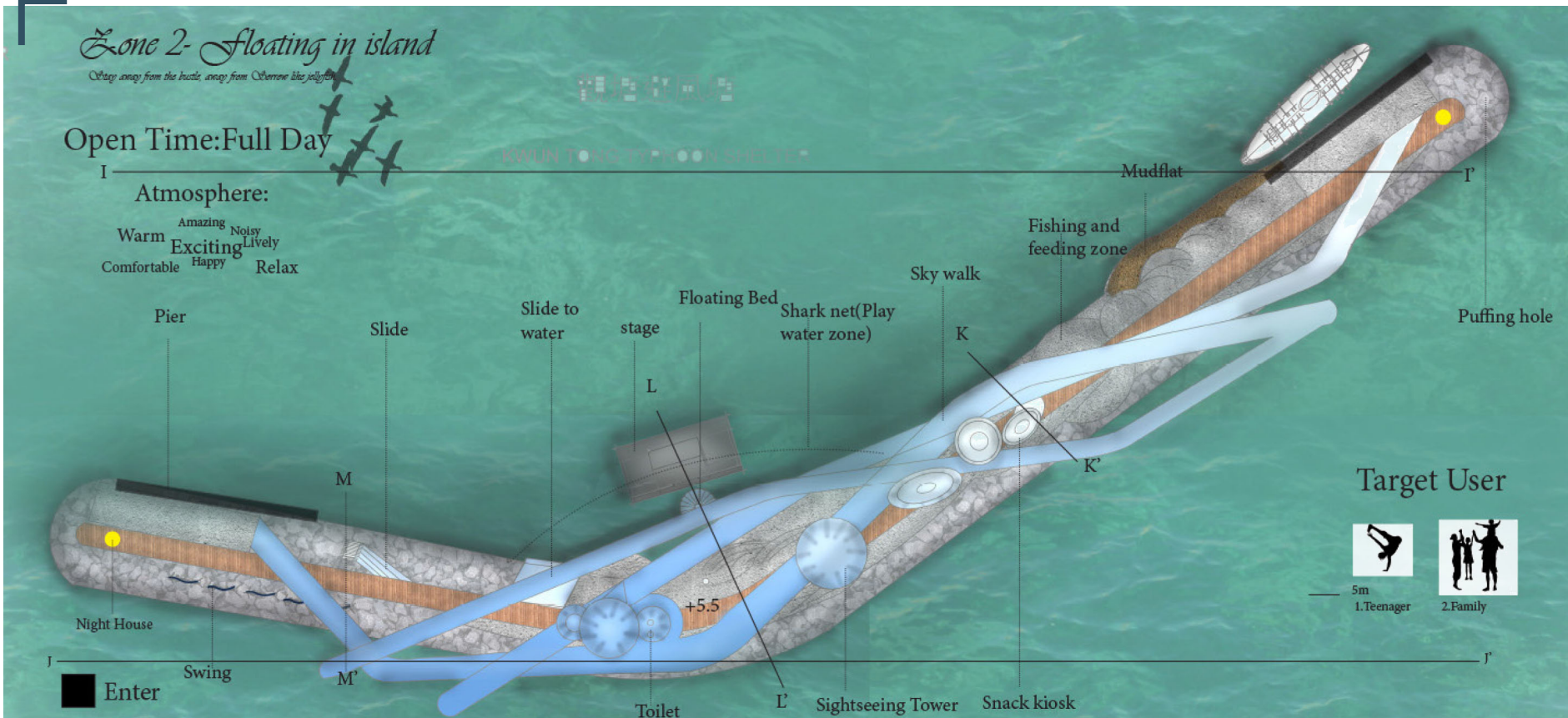
Enter

Target User



Plant list :





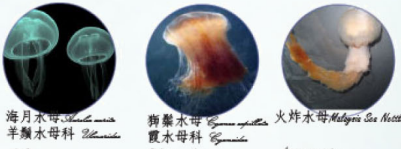
Water Biology(Common)



Land Biology



Water Biology(Seasonal)



Night Biology (With light)



Water Biology(Rare)

