



# PERFORMATIVE NATURE

Barcelona International Landscape Architecture Biennial

September 2018 **Barcelona**

## SCHOOL PRIZE

X International Landscape Architecture Biennial

Máster d'Arquitectura del Paisatge -DUOT - UPC

ETSAB- Escola Tècnica Superior

d'Arquitectura de Barcelona

Avenida Diagonal, 649 piso 5

08028 Barcelona-Spain

## TECHNICAL DOSSIER

Title of the project	A new colour of Le Albere
Authors	Panziera Riccardo-Postinghel Davide-Setti Andrea-Toninelli Giacomo
Title of the course	Urbanistica with workshop
Academic year	IV
Teaching Staff	Arch. G.Pino.Scaglione - Arch. Paolo Picchi
Department/Section/Program of belonging	D.I.C.A.M. - Departement of Civil, Enviromental and Mechanic
Degree course of Building Engineering and architecture	
University/School	University of Trento

### Written statement, short description of the project in English, no more than 250 words

The project concerns the redevelopment of district "Le Albere" in Trient. Investigations were carried out to clarify the problems and advantages of the ward. We have divided the fabric into full and empty spaces, this has allowed us to understand the architectural arrangement on the area. Then was measured the sound intensity in the different zones and its effects on people. Mobility turns out to be the first cause of the noise. Itineraries have been divided into driveways, cycle-pedestrians and railways. The green zone of the district has been divided into several categories: educational, sports, historical, private and simple tree-lined avenue or urban park. One of the problems is the lack neighborhood identity. Another theme that can bring about important social developments is the water course that flows between buildings. The target is to re-evaluate it by making it the protagonist of everyday life, becoming a living, dynamic and changeable place able to make the architectural spaces interact with each other. It was possible to reach the goal through simple operations like compression-extraction-subtraction. Currently, one of the obstacles that prevents us from interacting with the water course turns out to be the edge, or more simply how the water relates to the architectural space and to the people. We have, therefore, decided to work on this aspect, too, taking the concept of the edge to the extreme and overturning it. During the development of the project the vegetation has assumed even more importance. The water course, the trees and the simple green area can become a reason for meeting and relationship. It will take different values, from the historical, to the ecological or to the didactic.

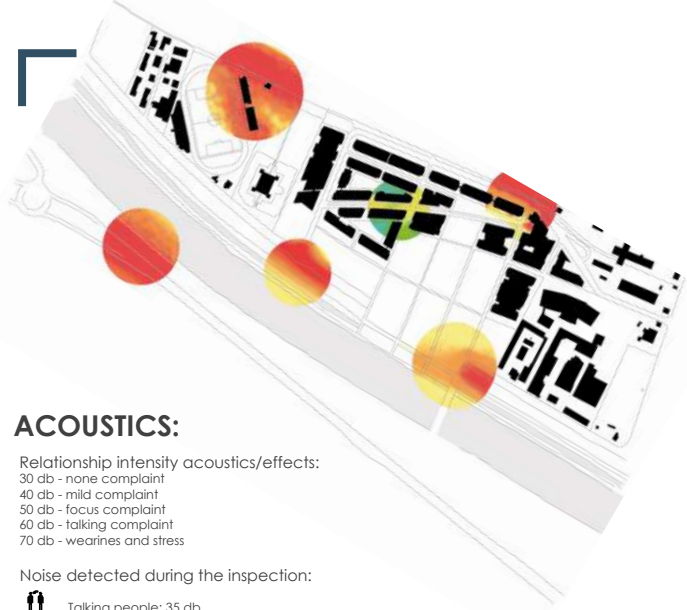
### For further information

Máster d'Arquitectura del Paisatge -DUOT - UPC

T: + 34 93 401 64 11 / +34 93 552 0842

Contact via email at: [biennal.paisatge@upc.edu](mailto:biennal.paisatge@upc.edu)

Consult the web page <http://landscape.coac.net/>



## ACOUSTICS:

Relationship intensity acoustics/effects:  
 30 db - none complaint  
 40 db - mild complaint  
 50 db - focus complaint  
 60 db - talking complaint  
 70 db - weariness and stress

Noise detected during the inspection:

Talking people: 35 db

Intense traffic: 60 db

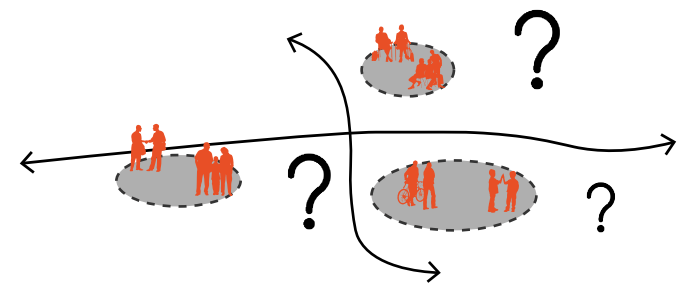
Train noise: 75 db

Acoustics intensity  
 25 db 75 db

## FRAGMENTATION

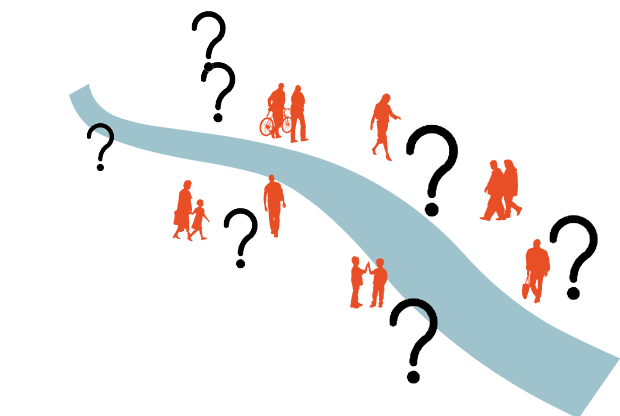
### Problems:

After surveys and polls we identified that the people doesn't identify themselves in the district. One of the reasons is that there is no connections between local activities.



### ONLY A BARRIER:

Another matter that became important not only in an architectural viewpoint and that can brings us in social developments, is the artificial stream. This small river is a bad come out of Adige and result free from every common benefit.



## MOBILITY:

Driveway:

x25/h x300/h  
 MIN MAX

Pycle path:

x50/h x400/h

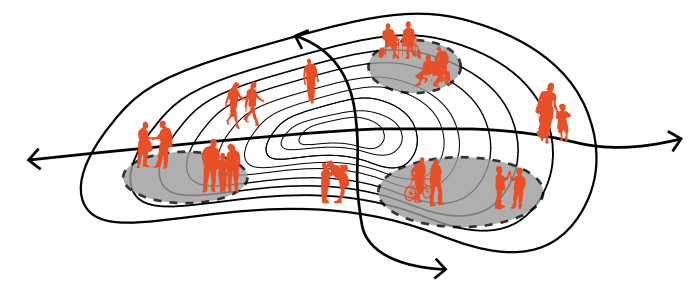
Railway:

x008/h

## COMMUNICATIONS

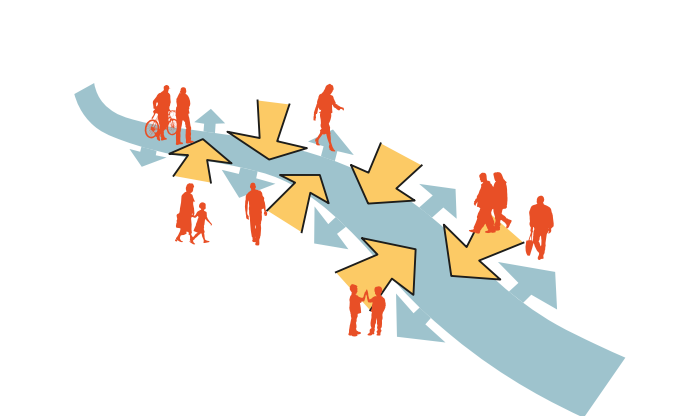
### STEP1:

Working on links and communications, between differents groups of people that carry out activities, let us to create an identy that is inhate and unconnected with the place of belonging.



### A NEW BRIDGE FOR ALBERE:

Now the stream is a silent and dead space; appreciating it and converting it in the protagonist of people daily life it can changes his nature the water can be a dynamic and alive place.



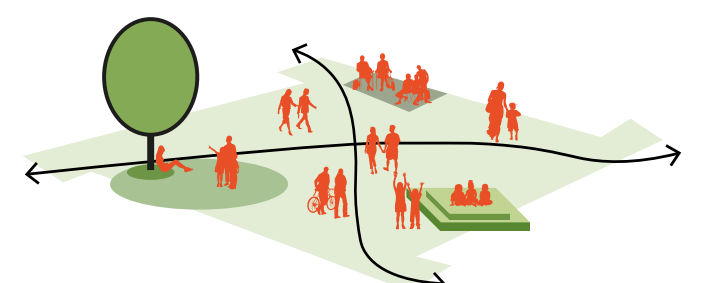
## VEGETATION:

PARCO URBANO VALE ALBERATO GIARDINO STORICO VERDE EDUCATIVO VERDE SPORTIVO VERDE PRIVATO

## NATURAL SPACE

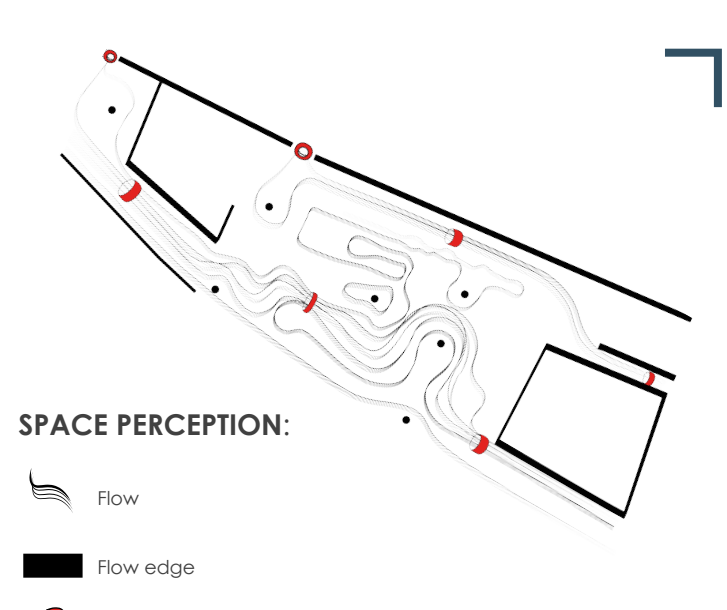
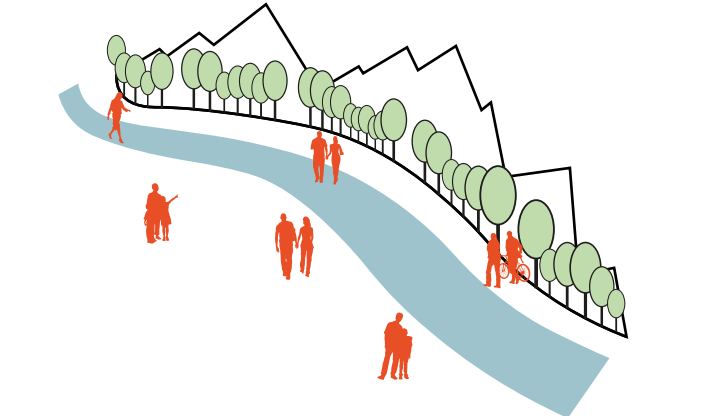
### STEP2:

Natural architectural space, thanks to elements such as sittings, shadow spots, trees, becomes an opportunity of interaction and relationship between different groups therefore to link images with a real place.



### NATURE, A CONTINUITY ELEMENT:

Natural elements are the only continuity elements that are still here nowadays; big historical trees, the river and mountains are the unchanged elements that create that searched connesctions.



## SPACE PERCEPTION:

Flow

Flow edge

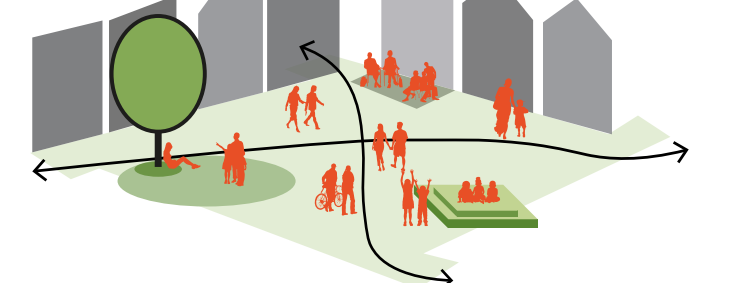
Limited flow

Open Flow

## URBAN SPACE

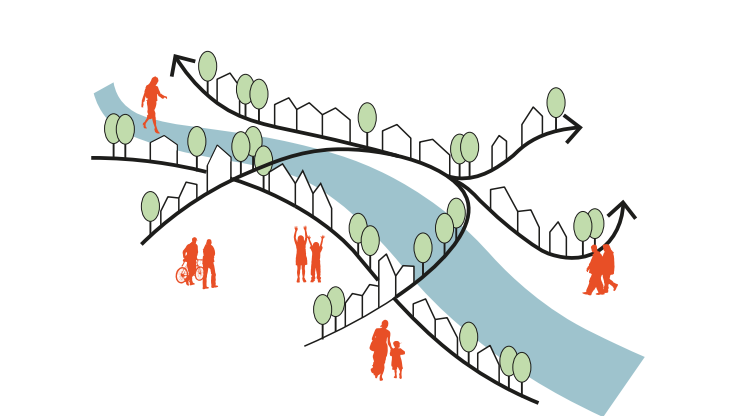
### STEP3:

People identify themselves in an architectural space characterized by clear shapes and layouts. Thanks to interaction people and space, natural and urban, is possible to create experienceses that define a complete identity in the people.



### PERMEABILITY:

Our purpose is to connecte the different architectural spaces with nature and the stream trough the creation of changeable spaces with different functions as teaching, playful or simply past connection function.



Country / City Italy - Trento

University / School University of Trento

Academic year IV

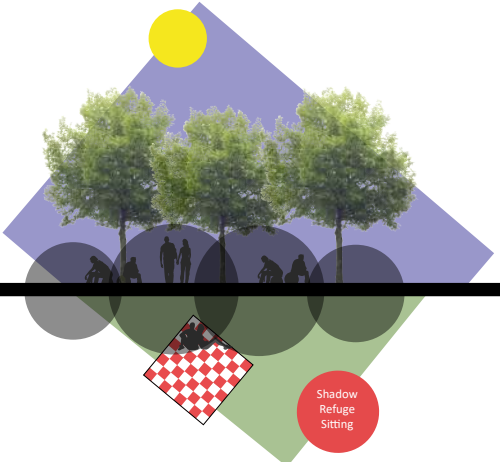
Title of the project A new colour of Le Albera

Authors Panziera Riccardo-Postinghel Davide-Setti Andrea-Toninelli Giacomo

# HOW INCREASE THE FREQUENTATION OF LE ALBERE?

## SHADOW OF LE ALBERE

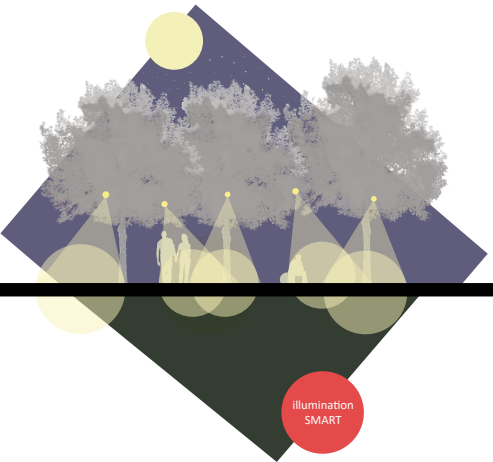
**PROBLEMS:**  
low number of trees in the park.



**STRATEGY:**  
Increase the number of trees in order to create shadow spots during the day time.

## UNDER A NEW LIGHT

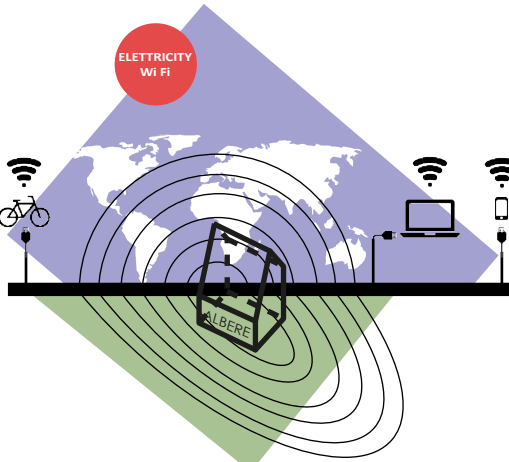
**PROBLEMS:**  
Lock of a versatile lighting system during the evening.



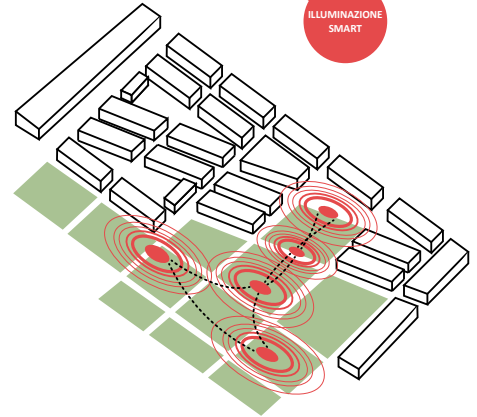
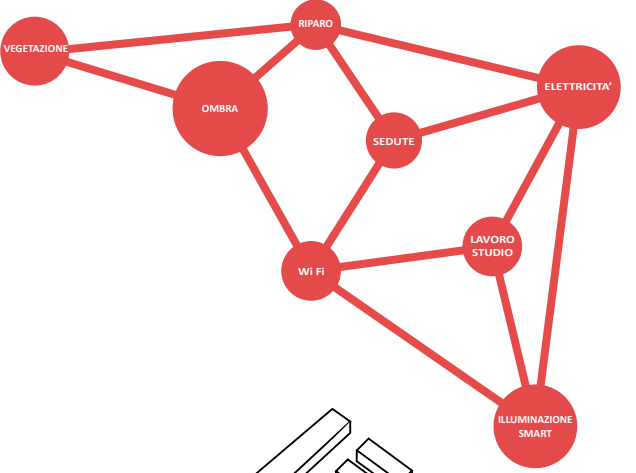
**STRATEGIA:**  
Installation of smart lighting systems able to satisfy different activities.

## CONNECTION FOR ALL

**PROBLEM:**  
No public WiFi in the park that could be used for working or study.

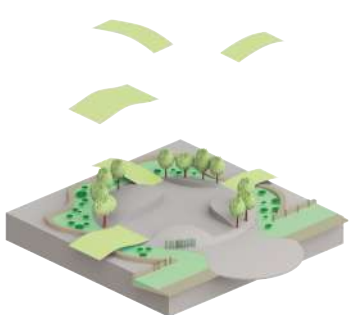
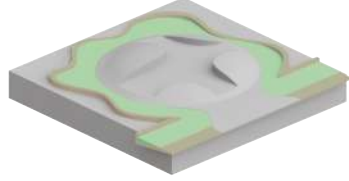
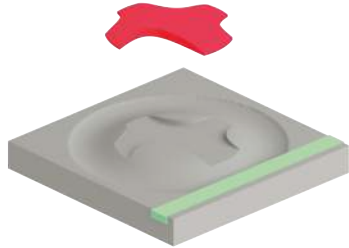
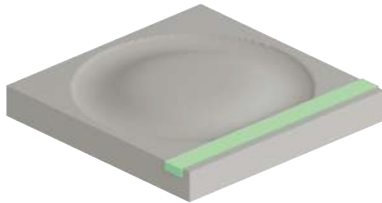


**STRATEGY:**  
Free WiFi and Charging. Creation of educational space usable by school, museum and work activities.



**FOCUS:**  
The goal is to redefine the conception of classic park, creating something new, innovative and smart able to adapt and updating to the different necessity.

**OPERATION:**  
Thanks to elementary operation such as compression, removing and addition the starting surface have been shaped due to create a dynamic and lively space.



## THE FLOW OF NATURE

Reference color    Reference color    Reference color    Reference color    Spring florescence    Summer florescence    Autumn florescence    Winter florescence

### PHYTODEPURATION

The phytodepuration is a natural depuration process for domestic, agricultural and industry water. The system recreates the natural condition of depuration typical of water ambient.

**O2 Plants:**  
Plants which principally grow under water with the aim ensuring optimal oxygen level.

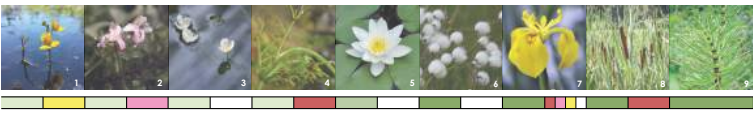
1) <i>Utricularia australis</i>	Spring florescence	Summer florescence
2) <i>Elodea canadensis</i>	Spring florescence	Summer florescence
3) <i>Egeria densa</i>	Spring florescence	Summer florescence
4) <i>Chara vulgaris</i>	Spring florescence	Summer florescence

**Shady Plants:**  
Plants which used to live under water with floating leaves. They solve task of reducing water temperature.

5) <i>Nymphaea alba</i>	Spring florescence	Summer florescence
-------------------------	--------------------	--------------------

**Filtering Plants**  
Better known as marshy plants. Their function is filtering water.

6) <i>Eriophorum angustifolium</i>	Spring florescence	Summer florescence
7) <i>Iris pseudacorus</i>	Spring florescence	Summer florescence
8) <i>Typha latifolia</i>	Spring florescence	Summer florescence
9) <i>Equiseto palustre</i>	no flower	



### TREES

We chose different types of trees that create a small forest as flowering, river forest and decorative trees.

**Flowering trees**  
We chose fruit trees like apple trees because they are related to the historical heritage of the district. The apple trees are divided according to the colour.

1) <i>Malus "Floribunda"</i>	Spring florescence	Summer florescence
2) <i>Malus "Golden Hornet"</i>	Spring florescence	Summer florescence
3) <i>Malus "Evereste"</i>	Spring florescence	Summer florescence
4) <i>Malus "Red Sentinel"</i>	Spring florescence	Summer florescence

**River forest trees**  
These trees live in water places as river edges. We chose three types of tree that show the colour variation.

5) <i>Alnus glutinosa</i>	Spring florescence	Summer florescence
6) <i>Salix babylonica</i>	Spring florescence	Summer florescence

**Decorative trees**  
These trees are used for parks and garden decorations due to the colours of their leaves and flowers.

7) <i>Nyssa sylvatica</i>	Spring florescence	Summer florescence
8) <i>Magnolia grandiflora</i>	Spring florescence	Summer florescence
9) <i>Betula pendula</i>	Spring florescence	Summer florescence



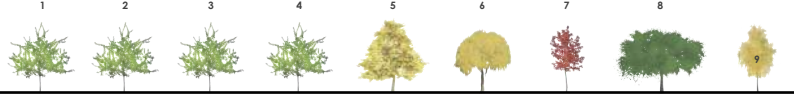
### SPRING PERCEPTION



### SUMMER PERCEPTION



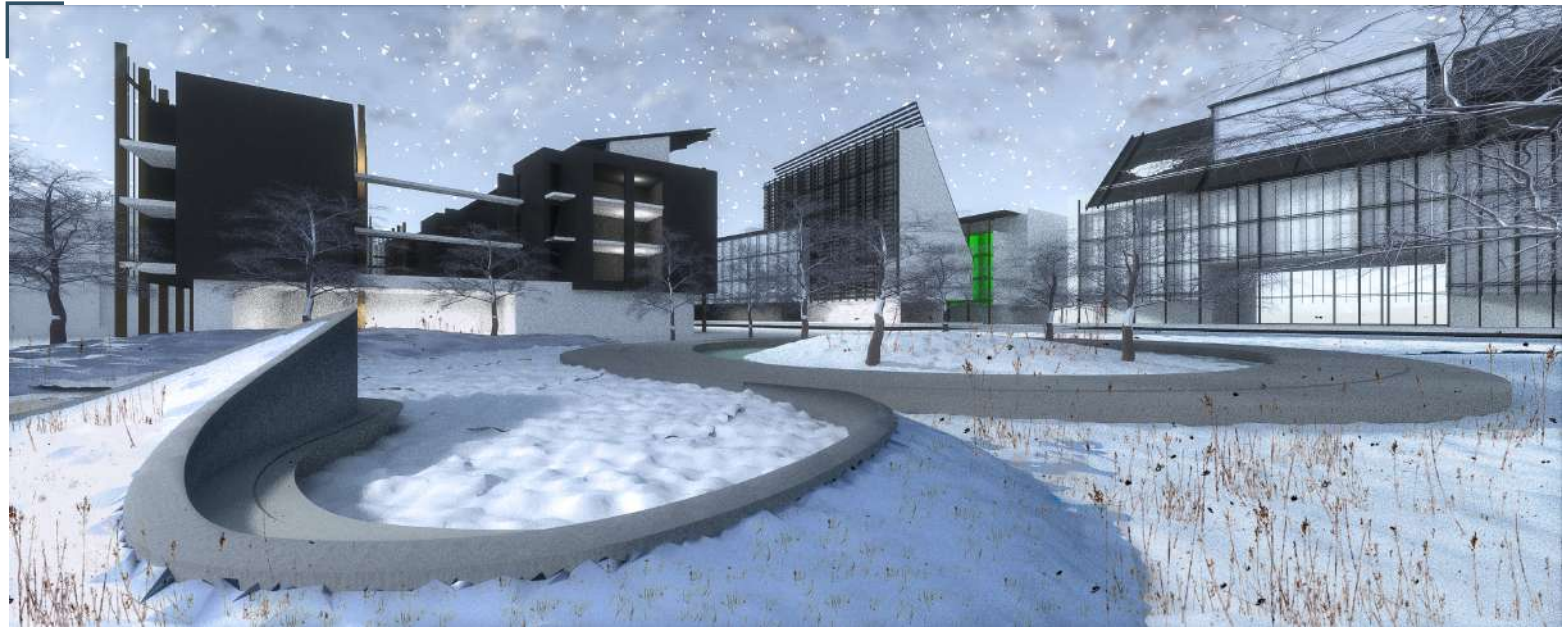
### AUTUMN PERCEPTION



### WINTER PERCEPTION



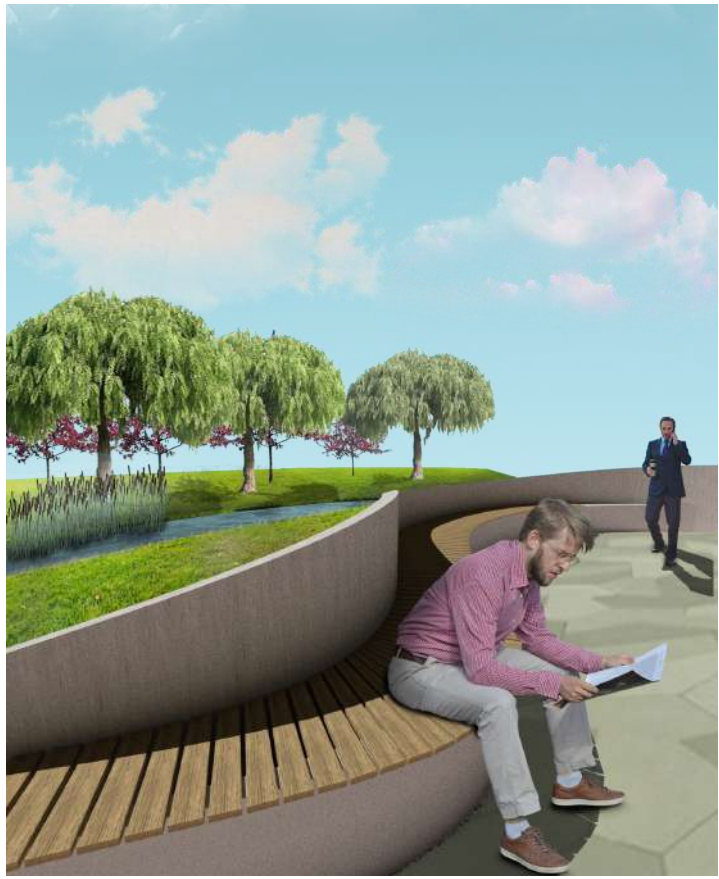




WINTER VISION



NIGHT VISION



DAY VISION

# THE COLOURS OF LE ALBERE

