

Country / City China

University / School Sichuan Normal University

Academic year 2017-2018

Title of the project Finding the missing innocence

Authors Deng Shuman, Chen Yuyuan, Zhao Yaqi



PERFORMATIVE NATURE

Barcelona International Landscape Architecture Biennial

September 2018 **Barcelona**

SCHOOL PRIZE

X International Landscape Architecture Biennial

Máster d'Arquitectura del Paisatge -DUOT - UPC
ETSAB- Escola Tècnica Superior
d'Arquitectura de Barcelona
Avenida Diagonal, 649 piso 5
08028 Barcelona-Spain

TECHNICAL DOSSIER

Title of the project Finding the missing innocence
Authors Deng Shuman, Chen Yuyuan, Zhao Yaqi
Title of the course Community Planning Practice and Graphic Design
Academic year 2017-2018
Teaching Staff Gan Na
Department/Section/Program of belonging The Faculty of Geography Resource Sciences
University/School Sichuan Normal University

Written statement, short description of the project in English, no more than 250 words

The theme of this project is "finding the missing innocence", which aims to make the dwellers under the great pressure of life find the losing innocence, as well as the beauty of life.

The design relies on the two characteristics of children—curiosity and vigour. The curiosity of kids is displayed by elements in the landscape, such as book room and popular science plaza. In addition, the energy of children is demonstrated by sunny lawn and jungle adventure.

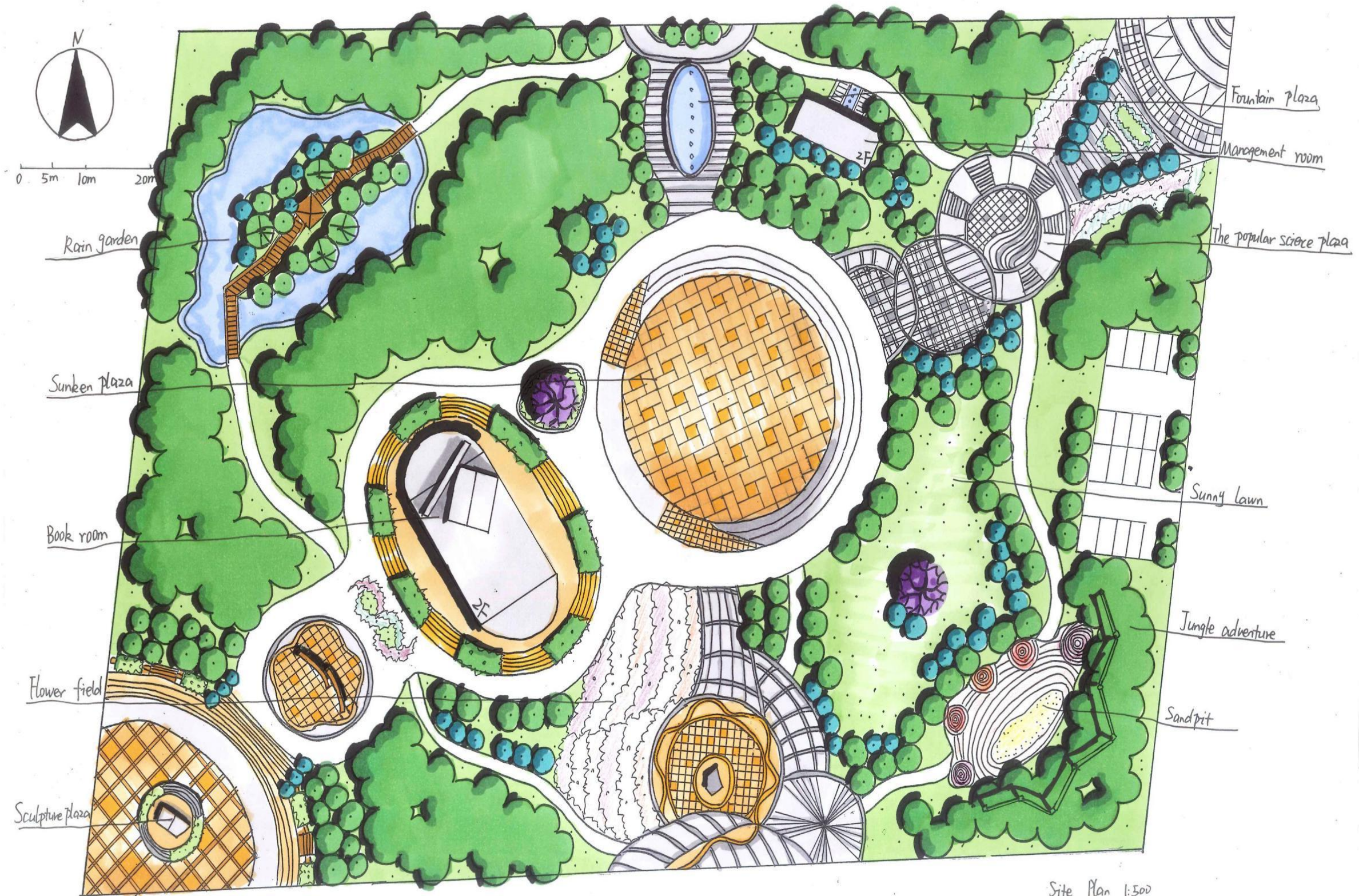
The project chooses the images of both bamboo sheet in ancient China and the contemporary book. What's more, it uses the images of book to illustrate the concepts of knowledge. Besides, the rain garden, which can realize the circulation of rain, is rather economical and environmental-friendly. The plants in the garden can beautify our surroundings, and release more oxygen.

This year is the decennial of "5.12 earthquake". It reminds us that the city has to arrange some places to avoid disaster, thus the project adds some functions about that. The coffee bar under the sunken plaza can be the emergency shelter and wells which are covered by sculptures can provide water for residents.

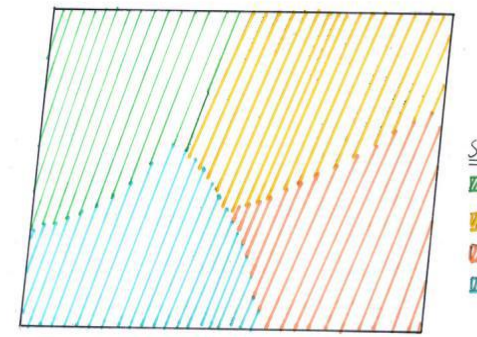
For further information
Máster d'Arquitectura del Paisatge -DUOT - UPC

T: + 34 93 401 64 11 / +34 93 552 0842
Contact via email at: biennial.paisatge@upc.edu
Consult the web page <http://landscape.coac.net/>

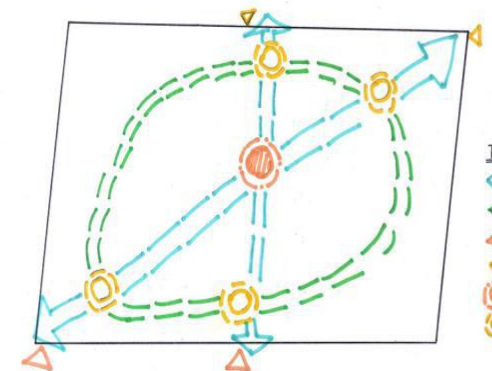
MASTERPLAN



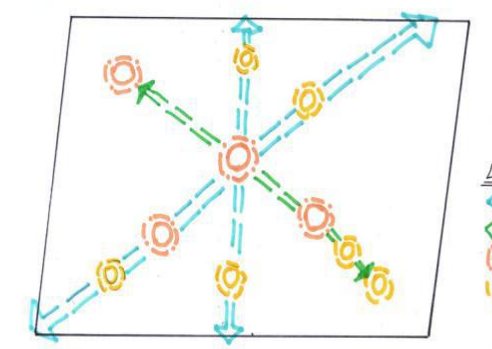
Site Plan 1:500



- Sectorization**
- ▨ Ecological sightseeing area
 - ▨ Emergency shelter area
 - ▨ Children playground area
 - ▨ Popular science education area

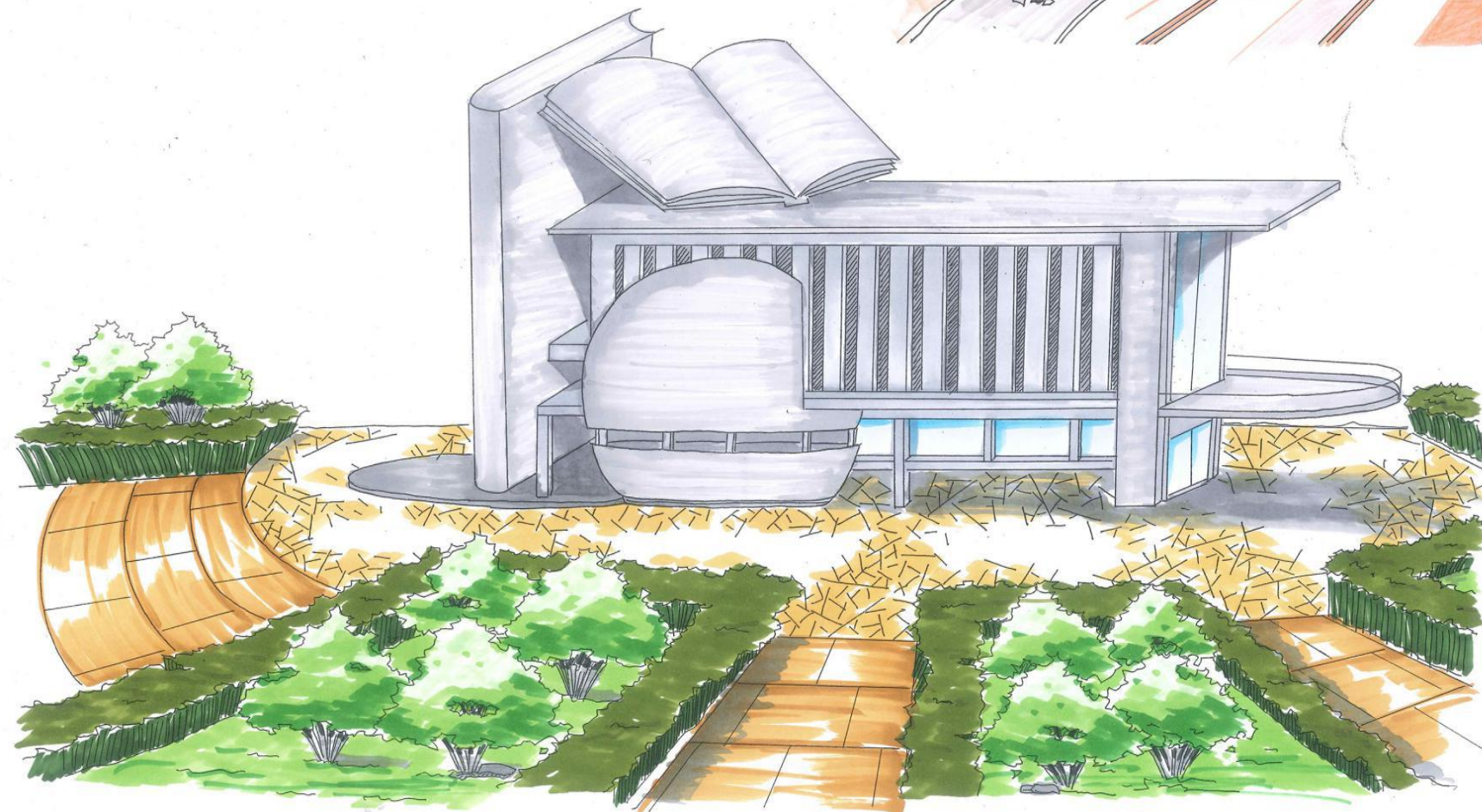
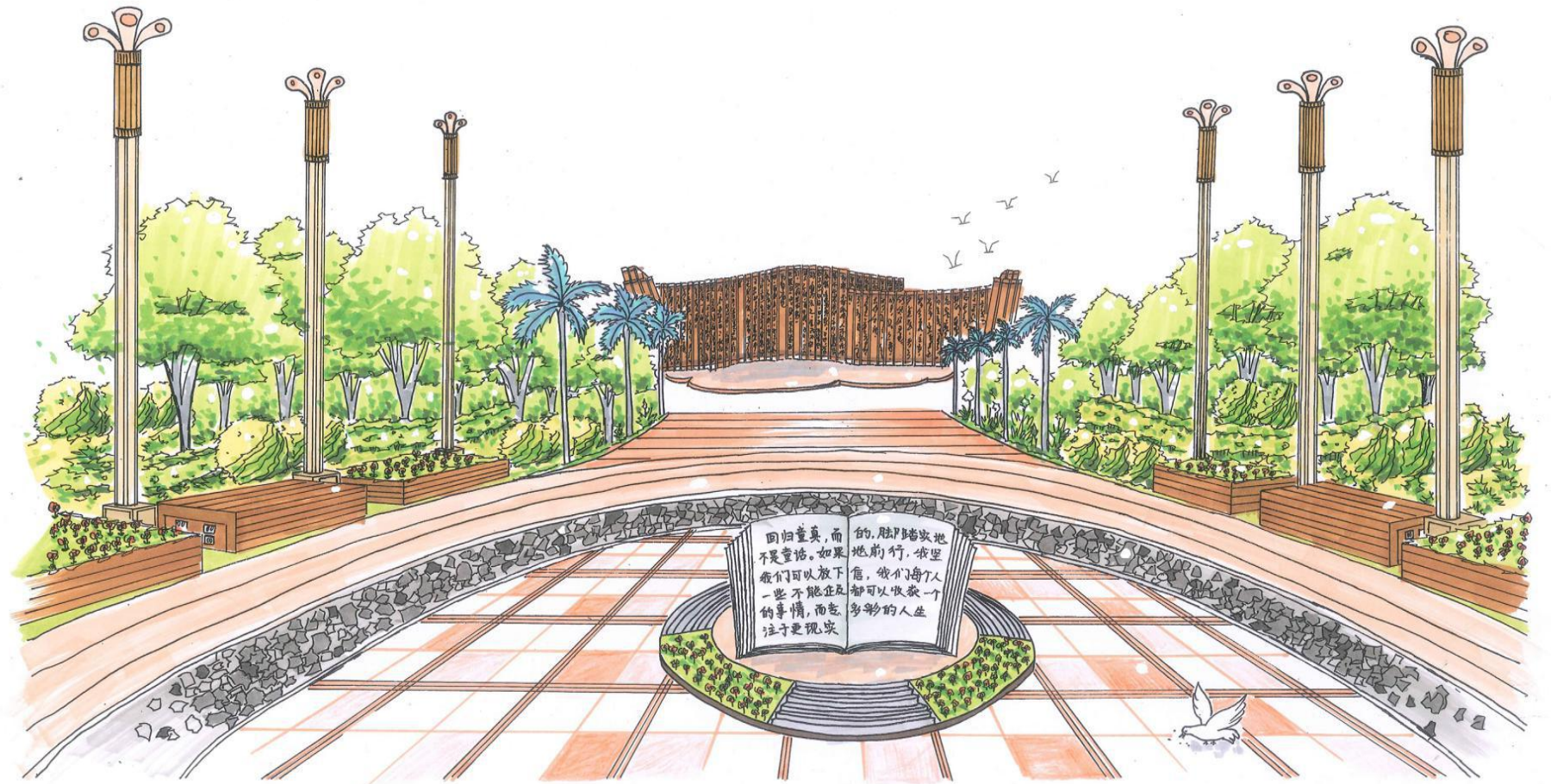


- Traffic analysis**
- Main road
 - - - Secondary road
 - ▲ Main entrance
 - ▲ Secondary entrance
 - Main traffic nodes
 - Secondary traffic nodes

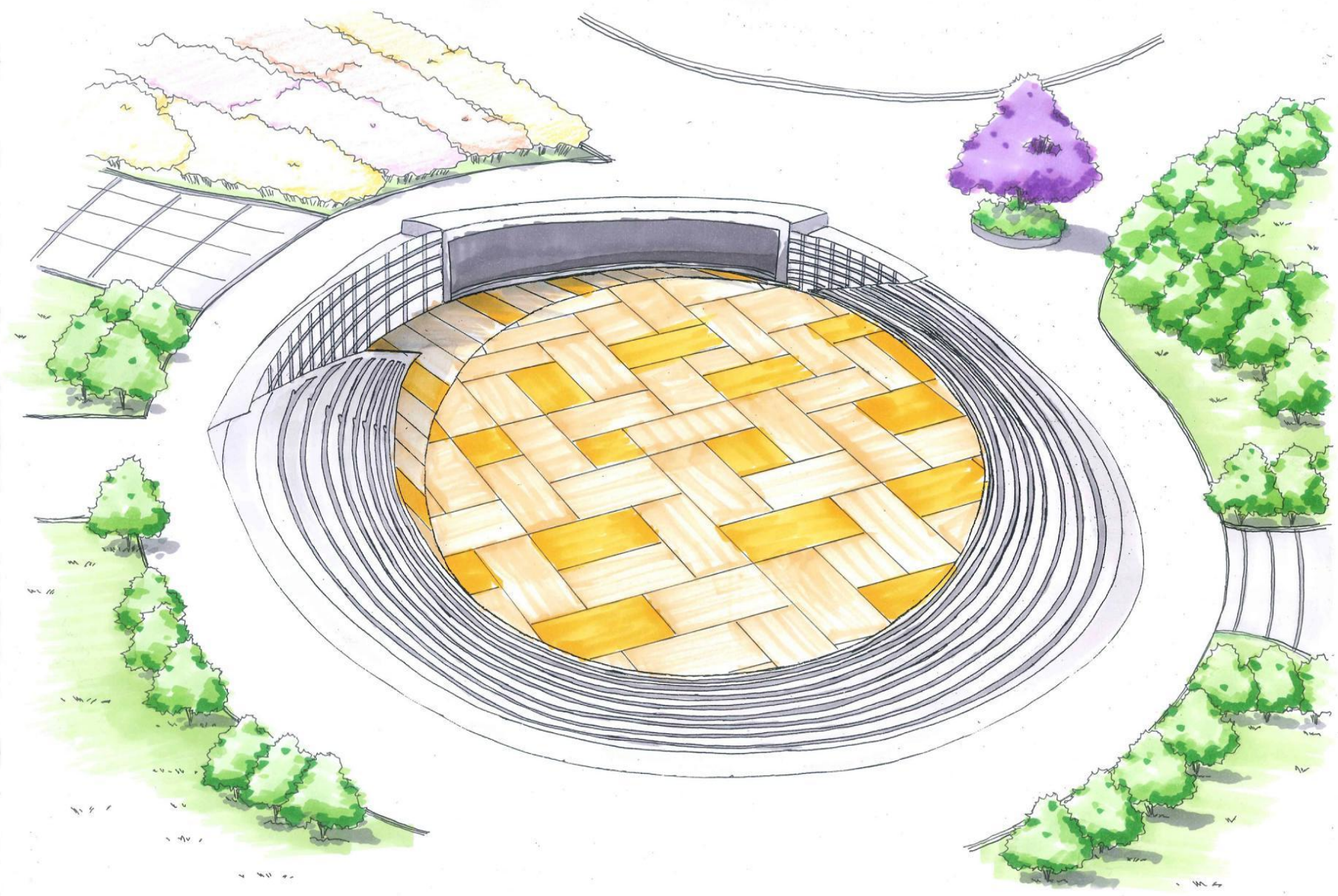


- Landscape analysis**
- Main landscape axis
 - - - Secondary landscape axis
 - Main landscape nodes
 - Secondary landscape nodes

SCULPTURE PLAZA
EFFECT PICTURE



BOOK ROOM
EFFECT PICTURE



SUNKEN PLAZA
EFFECT PICTURE

UNDERGROUND COFFEE BAR
EFFECT PICTURE

