

---

Country / City ..... Germany / Hanover  
University / School ..... Leibniz Universität Hanover  
Academic year ..... winter semester 2017/18  
Title of the project ..... Concrete Borders - Terrorism and its Effects on Public Space  
Authors ..... Nicole Schüler





# PERFORMATIVE NATURE

Barcelona International Landscape Architecture Biennial

September 2018 **Barcelona**

SCHOOL PRIZE

X International Landscape Architecture Biennial

**Máster d'Arquitectura del Paisatge -DUOT - UPC**

ETSAB- Escola Tècnica Superior

d'Arquitectura de Barcelona

Avenida Diagonal, 649 piso 5

08028 Barcelona-Spain

## TECHNICAL DOSSIER

Title of the project	Concrete Borders - Terrorism and its Effects on Public Space
Authors	Nicole Schüler
Title of the course	master thesis
Academic year	winter semester 2017/18
Teaching Staff	Prof. Dipl.-Ing. Katja Benfer & M. Sc. Kendra Busche
Department/Section/Program of belonging	Department of Landscape Architecture & Department of Open Space Development
University/School	Leibniz Universität Hanover

Written statement, short description of the project in English, no more than 250 words

Terrorism turned into a recurring topic in the western civilization. Particularly the attacks on the World Trade Center in New York City contributed to that change. In a series of attacks with growing density the safety issue gets higher priority. After the assassination on Breitscheidplatz, Berlin in 2016, where a truck was driven into the crowd on a Christmas market, Europe is also affected. Since then Germany increased safety precautions especially for events. This happens through reinforced police presence but also with misappropriated elements that are used as collision protection and became a regular feature in safety concepts for most events. Media reports and the hysteria caused by them take a substantial role in the safety discussion. Councils are prone to act rashly by placing huge numbers of mentioned elements in public space. These elements may create a feeling of safety, but at the same time they indicate threats. Their protection qualities are insufficient and they entail additional risk for the usage of public spaces. This master thesis examines the effects of terrorism on public space. A theoretical analysis and expert talks took place. Recently used safety precautions and elements were investigated and assessed in a catalogue of measures with different criteria. Test designs get developed based on lacks the elements contain and resulting requirements. Additionally the empirical work provides input. The aim of the work is the integration of collision protection measures in public space in consideration of landscape architectural and designing aspects.

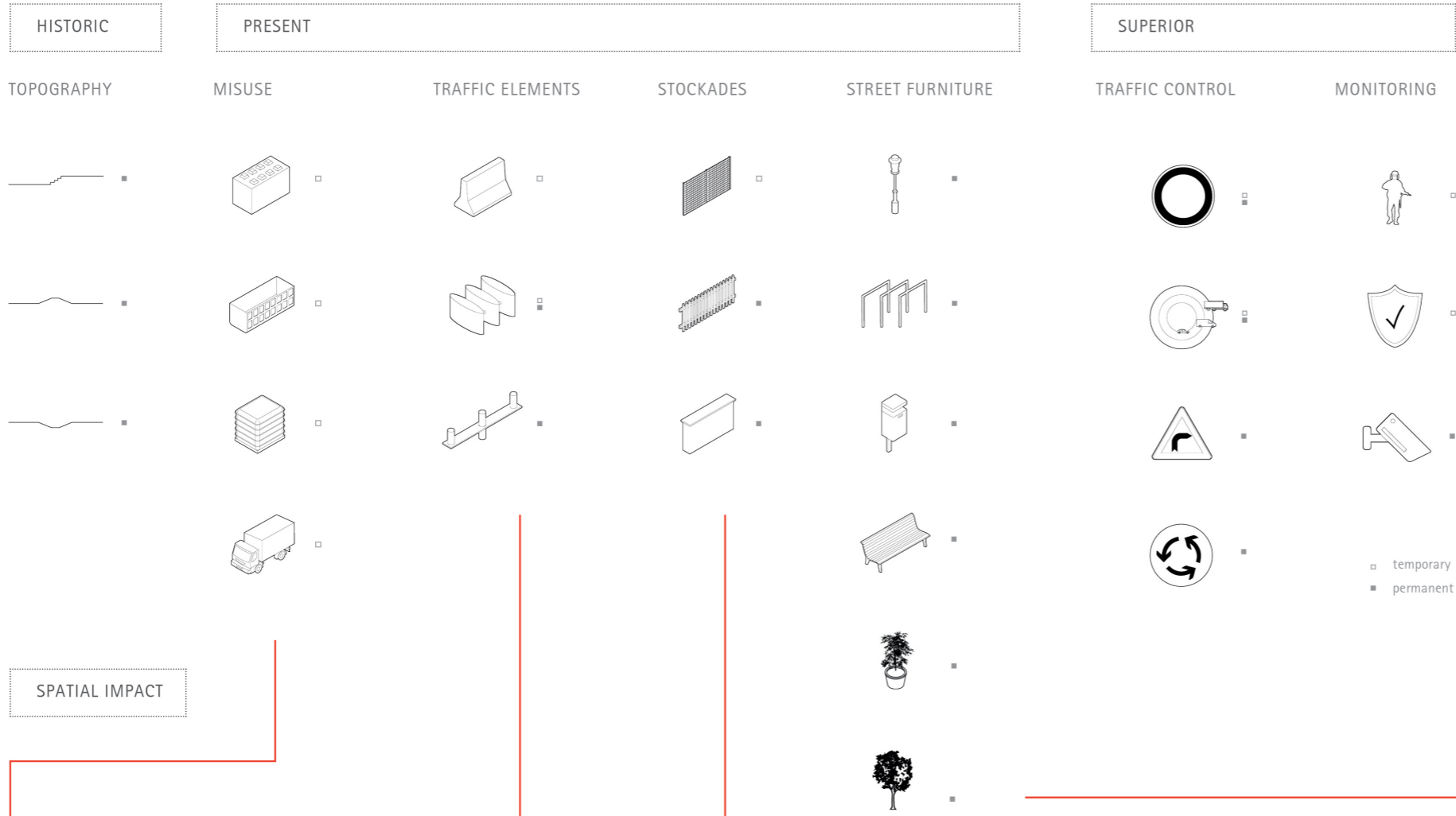
For further information

**Máster d'Arquitectura del Paisatge -DUOT - UPC**

T: + 34 93 401 64 11 / +34 93 552 0842

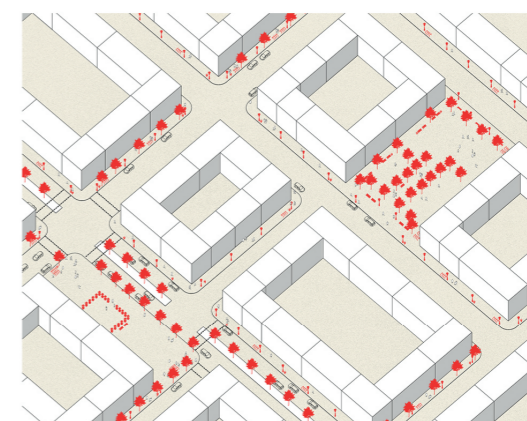
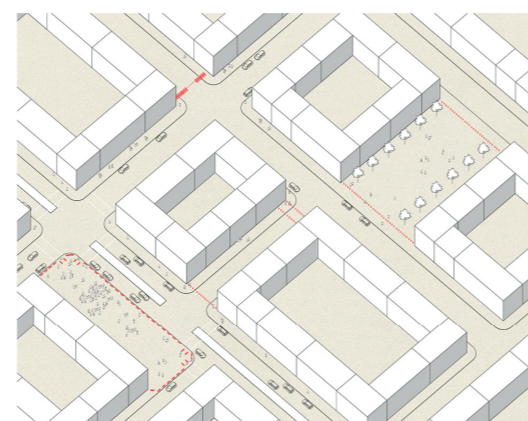
Contact via email at: [biennial.paisatge@upc.edu](mailto:biennial.paisatge@upc.edu)

Consult the web page <http://landscape.coac.net/>

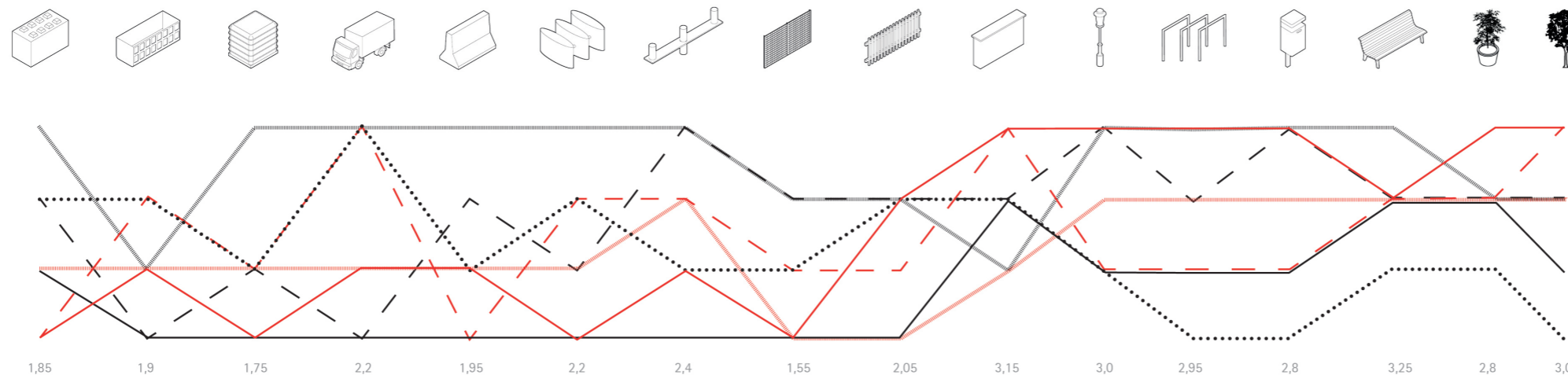


### PACKAGE OF MEASURES

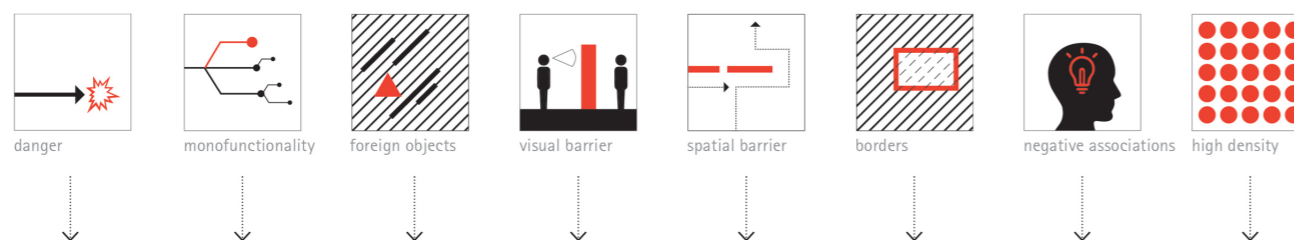
The catalogue provides an overview of security measures that are used in public open spaces. For this purpose, a division into the categories „historical“, „present“ and „superior“ was made. The context of the historical components is described in more detail in an excursion. The sub-categories of misuse, traffic elements, fencing and street furniture are part of current safety methods. Overriding are traffic planning measures relating to the environment of the site to be protected and methods for monitoring that are additionally integrated. The choice of the use of a certain object primarily depends on the purpose and duration of the respective application. Therefore, the objects were divided into temporary and permanent. Both parameters can be assigned to some objects. A spatial analysis in the form of axonometries, photos and schematic sectional views illustrates the use of the elements, shows the effect in free space and clarifies proportions and arrangement principles. This is followed by an evaluation according to various criteria. For comparability, the focus is on the vertical objects, i.e. the category „present“.



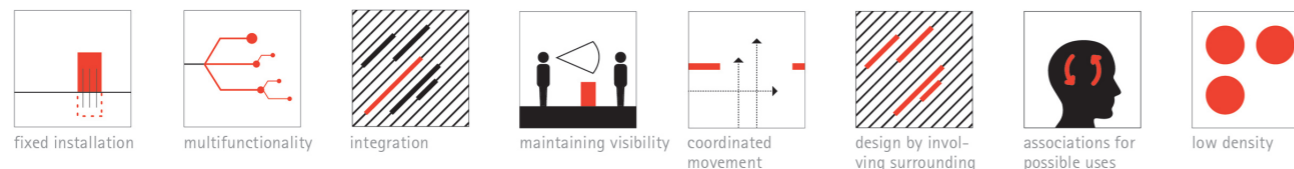
VALUE BENEFIT ANALYSIS



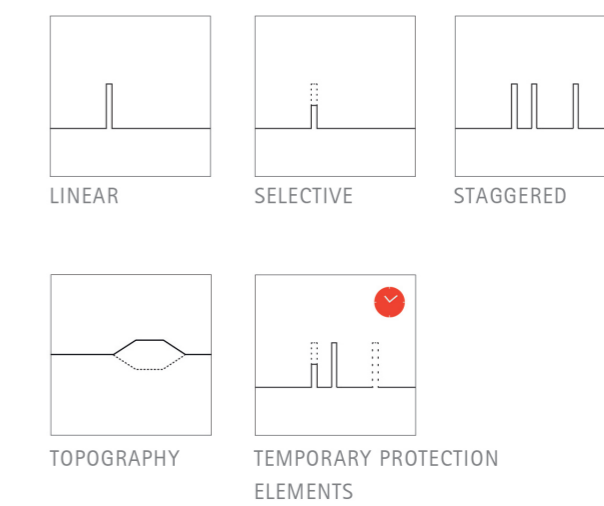
DEFICITS OF CURRENT PROTECTION MEASURES



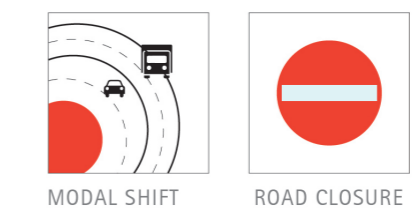
REQUIREMENTS COLLIDE PROTECTION



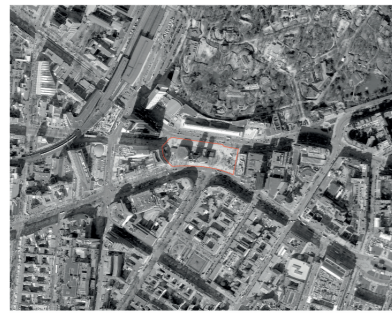
A | CONTACT ZONE STREET



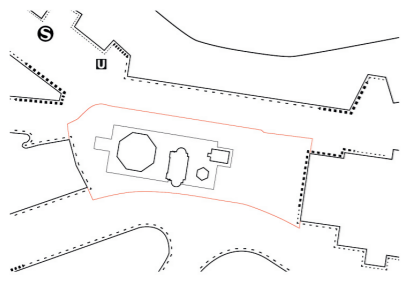
B | SOURROUNDING



BERLIN | BREITSCHIEDPLATZ



aerial view



spatial structure

In this design the focus for collision protection is on space expansion. The developed concept is based on the previous use of the peripheral traffic areas. Furthermore, the popular „Bikini Berlin“ building stands on its own due to its adjacent narrow pedestrian path. Its importance is strengthened by a generous forecourt, so that the Breitscheidplatz profits a car-free connection for different directions.

In the „Bikini Plaza“ design linear elements are used for sitting, lying and skating and have a space-dividing function for events such as galleries that emerge from the use of the Bikini building. The elements are staggered in the northern edge areas one behind the other and alternate in their function due to their different design in length and width. Plant elements also have a protective function and further contribute to shielding against traffic. The new interior of the square as a counterpart is kept free and brings with it a spaciousness for free appropriation. The protective effect on the square is reinforced by trees which are aligned orthogonally to the elements and dissolve towards the centre of the square. In the southern area adjacent to the traffic, the elements resemble the northern part, but are aligned with the flow of movement and are strengthened by a single or double staggered row of trees.

