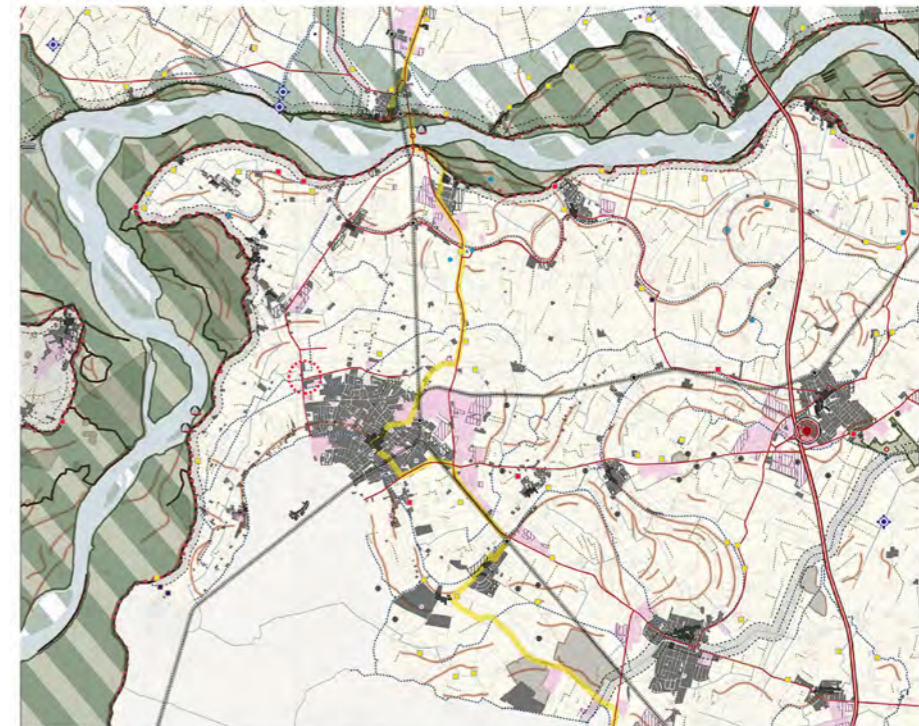


TABLE OF PERMANENCE



FRAMEWORK OF THE KNOWLEDGE



THE SLOW TRAIN THROUGH THE IDENTITY OF THE TERRITORY

Country / City	Italy / Mantova
University / School	Politecnico di Milano, Polo Territoriale di Mantova, Master of Science in Architectural design and history
Academic year	2017-2018
Title of the project	The Slow Train through the Identity of the Territory
Authors	Segala Irene - Tamelli Sara





PERFORMATIVE NATURE

Barcelona International Landscape Architecture Biennial

September 2018 **Barcelona**

SCHOOL PRIZE

X International Landscape Architecture Biennial

Máster d'Arquitectura del Paisatge -DUOT - UPC
ETSAB- Escola Tècnica Superior
d'Arquitectura de Barcelona
Avenida Diagonal, 649 piso 5
08028 Barcelona-Spain

TECHNICAL DOSSIER

Title of the project The Slow Train through the Identity of the Territory
Authors Segala Irene - Tamelli Sara
Title of the course Planning in historical context studio
Academic year 2017-2018
Teaching Staff Carlo Peraboni, Chiara Lanzoni, Chiara Giacomelli, Setareh Baniasadi
Department/Section/Program of belonging Dastu - Dipartimento di architettura e studi urbani
University/School Politecnico di Milano, Polo territoriale di Mantova, Master of Science in Architectural design and history

Written statement, short description of the project in English, no more than 250 words

The project proposes a sensibilization of the characteristics of the territory in the south of Po river, with a theme path that focuses mainly on aspects related to agriculture and the relationship that this has with the river Po and other elements of water, minor canals and agriculture. This focal element of the history and the culture of the territory has a strong relationship with the railway station, element of great historical-cultural heritage; this link is the first starting point to convey local supra-realities in the local area, thus highlighting its cultural richness.

Whit this project we want to reintroduce the typical activities of the past in the po islands as the apiculture to educate and involve people about the identity of the territory through a bikeline around the fields articulated in secondary thematic paths to show works of land art through the fields and the typical food and wine of the territory. We reuse abandoned buildings for the conservation of the rural courts to protect and implement also the cultivation of fields through the introduction of typical colture as melon, tomatoe, wheat, pumpkin, fruit.

For further information

Máster d'Arquitectura del Paisatge -DUOT - UPC

T: + 34 93 401 64 11 / +34 93 552 0842

Contact via email at: biennial.paisatge@upc.edu

Consult the web page <http://landscape.coac.net/>



Po river



Laghi Margonara, Gonzaga



Harbour, Riva di Suzzara



Suzzara station



Borgoforte station



Pegognaga station

LANDSCAPE AND ECOLOGICAL SYSTEM

TO INVOLVE

the population with activities in the landscape, such as:

- Didactic points for the knowledge and the enjoyment of the area, with the location of a didactic farm and a multifunctional center
- Individualization of particular panoramic views with the introduction of equipments like chairs and bikestopping

to let the people know the origin of their land, from the past to the present.

TO ADD

value to the landscape and to the ecological system, through the:

- identification of ecological link between the two parts divided by the highway

to preserve and reinforce the important places in the landscape and agricultural spaces and to conserve the ecological diversity.

TO IMPROVE

the enjoyment and fruition of the fields, through the:

- individualization of a protection area for the preservation of the permanence of the fields

to better enjoy the promenade arounds the fields. This choice came from the analysis of the pre-existence.

INFRASTRUCTURE

TO IMPROVE

the infrastructural transportation (roads, waterways, bikelines...), through the:

- Upgrading of the existing harbours and the identification of a new harbour near Portiolo; the aim is to promote the navigation of Po river
- Enlargement and restoration of the railstations of Suzzara, Gonzaga, Borgoforte and Pegognaga
- Principal focal node as a starting point for the connection of Suzzara station with Suzzara harbour, the Carolingia way and with the other cities
- Individualization of focal nodes, fundamental for the fruition of the territory
- Involvement of the Carolingia way in the enhancement and reactivation of the historical buildings and abandoned places

to implement the entire infrastructural system for a faster access to the areas, for the creation of new focal nodes and for the increasing of the tourism.

TO PROTECT

and preserve the agricultural, landscape and historical value of the channels, through the:

- mitigation through the using of low vegetation

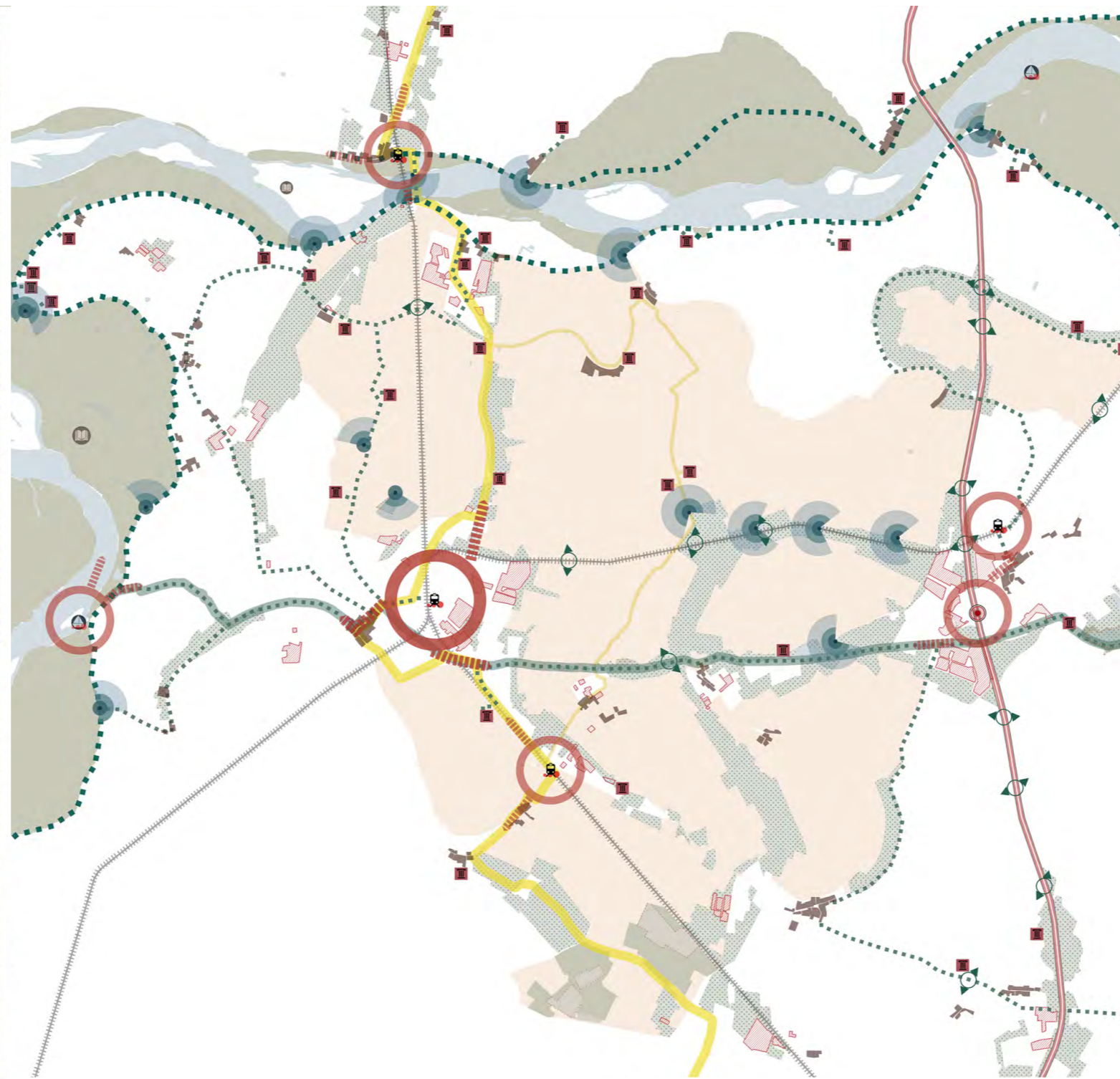
to increase protection along and beside the water channels.

TO COMPLETE

the bikelines, through the:

- completion of the missing parts of the existing bikelines through the cities
- enhancing and improvement of the existing bikelines on the embankments

to promote the ecological way of transportation and to provide security to the bike users.



SETTLEMENT

TO RESTORE

and preserve the abandoned places and structures in decay, through the:

- restoration and reusing of the historical buildings and rural courts (in a compatible way)

to increase the quality of the urban and public spaces, avoiding and stopping the decay.

TO CONTROL

the urban limits and the industrial areas spreaded in the territory, through the:

- individualization and definition of the expansion areas to complete the existing settlement and to introduce activities linked to the tradition of the territory

introduction of mitigation areas in order to protect from the pollution of the industrial areas all the fields of the landscape around these areas. The mitigation areas could help in the creation of the ecologic green system

to avoid the undefined and uncontrolled expansion in the countryside landscape.

TO PROTECT

the areas and the punctual elements that characterize the historical development of the territory and the landscape, through the:

- Preservation and conservation of the historical urban centres

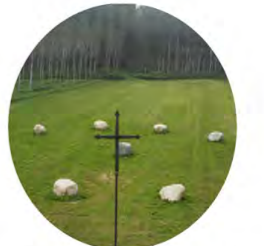
to maintain the historical traces of the passing time.

EXISTING ELEMENTS

- Water areas
- Protected areas
- Idraulic artefacts
- Toolbooth
- Train railway
- Highway



Typical rural court, Torricella



San Colombano Park, Riva di Suzzara



Toolbooth, Pegognaga



Countryside view



Piazza Castello, Suzzara



Typical historical channel

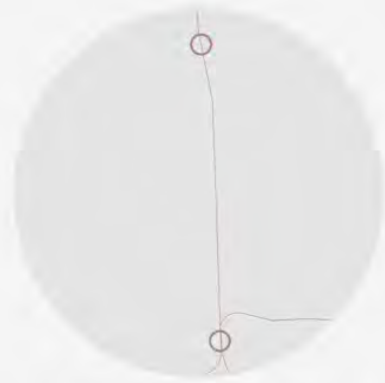


San Lorenzo Church, Pegognaga

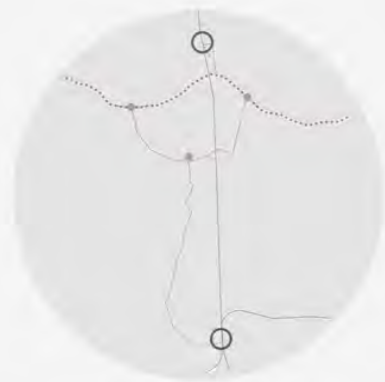


Laghi di San Lorenzo, Pegognaga





CONNECTION BETWEEN THE STATIONS OF SUZZARA AND BORGOFORTE



ALTERNATIVE PATH: THE SLOW TRAIN



ALTERNATIVE THEMATIC PATHS: ART, TASTE, HEALTH AND WATER



GREEN CONNECTION FROM THE COUNTRYSIDE TO THE CITY



TO REINTRODUCE
THE TYPICAL ACTIVITIES OF THE PAST IN THE PO ISLANDS

As the apiculture



TO CONNECT
THE NEW BIKELINE WITH THE SOVRACOMUNAL PROJECT EUROVELO

Through the design of equipped point of view: a suspended volume on the embankment



TO EDUCATE AND INVOLVE
PEOPLE ABOUT THE IDENTITY OF THE TERRITORY

Through a bikeline around the fields articulated in secondary thematic paths: to show works of land art through the fields, to try the typical food and wine of the territory, to run and do physical activities, to try typical activities of the place as fishing



TO PROTECT AND IMPROVE
THE WATER SYSTEM

Through the mitigation of the channels

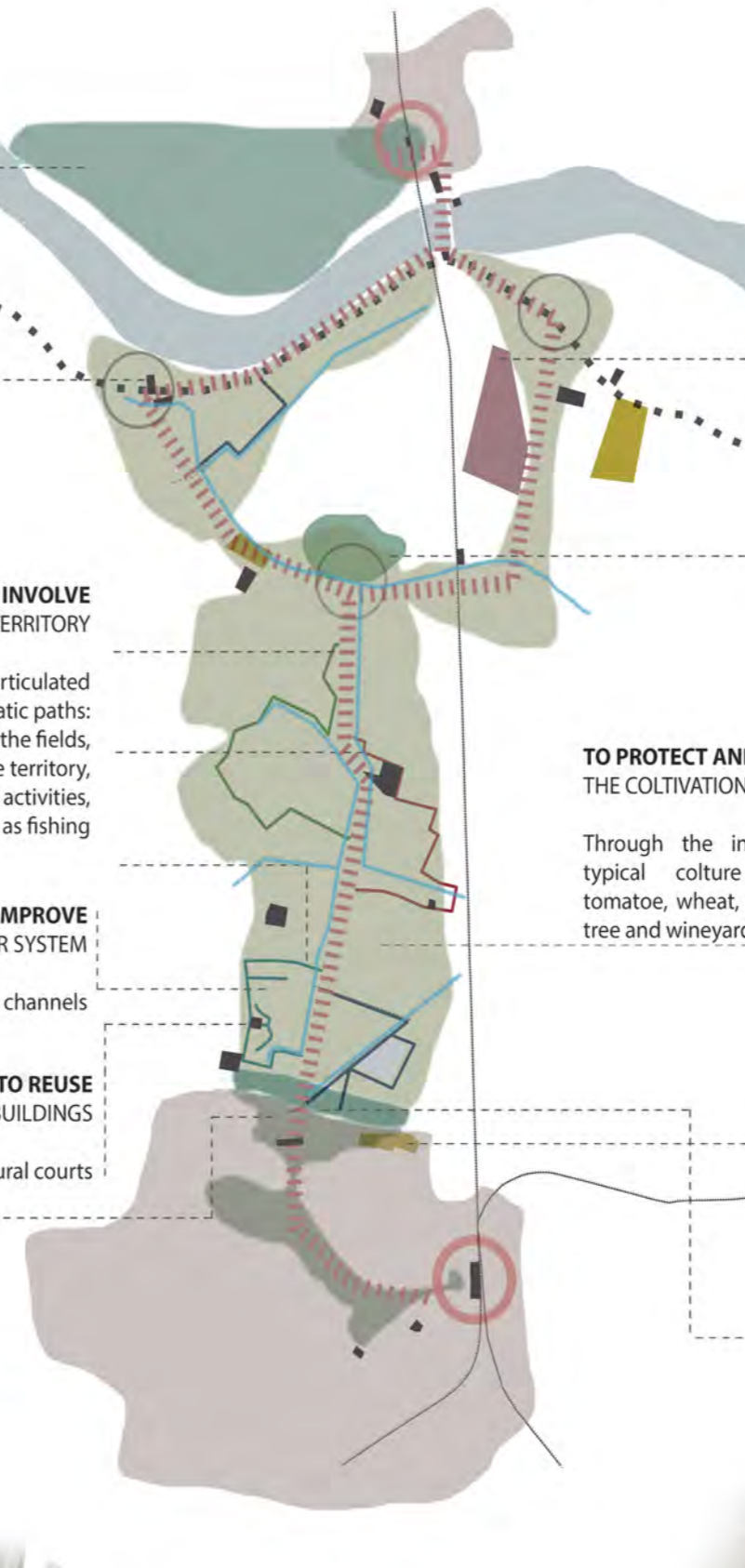


TO REUSE
ABANDONED BUILDINGS

for the conservation of the rural courts

TO LIVE
THE UNUSED AND ABANDONED SPACE ON THE BOUNDARY OF THE CITY

through the design of a sperimental garden composed by a skygarden, a landgarden, watergarden, a labirint, some work spaces and places for sport and play



TO COMPLETE
THE EXPANSION INDUSTRIAL AREAS

Through the design of sustainable industrial buildings interconnected with the green system

TO EDUCATE
PEOPLE TO THE DIFFERENT SPECIES OF TREES AND VEGETATION OF THE TERRITORY

Through the design of a "trees library"

TO PROTECT AND IMPLEMENT
THE COLTIVATION OF FIELDS

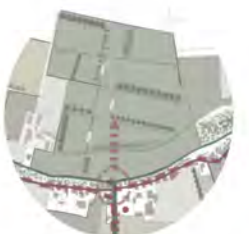
Through the introduction of typical colture as melon, tomatoe, wheat, pumpkin, fruit tree and wineyard

TO COMPLETE
THE EXPANSION OF RESIDENCIAL AREAS

Through the design of sustainable houses with green roof and solar panel on the roof

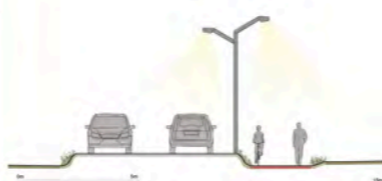
TO CONNECT
THE CITY AND THE LANDSCAPE

Through the design of urban garden both public and private connected to the countryside by some pavimented path





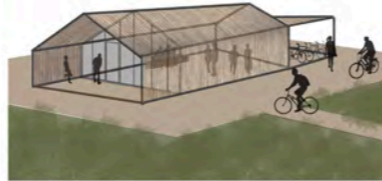
THE AGRICULTURAL PARK



THE BIKELINE
The new bikeline "The slow train" will be at more or less 50cm under the level of the street, taking advantage of the existing difference of level



THE PORTALS
The beginning of a thematic path will be signed by wooden portals and information panels



RESTING POINTS
During the path there will be temporary wood pavilions equipped with benches and tables to have the possibility to eat or simply to stay together



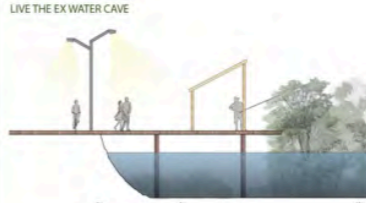
DIFFERENT POINTS OF VIEW
The passage to the land art path is signed by two bridges that permit to join the fields from the high



SKY GARDEN
A new way to work together about natural and environmental themes with the possibility to show the result of each activity in an unconventional exposition gallery



EQUIPPED FRAME
This element has been thought as a symbolic division from a more private green: the residence to a public area. It is not a barrier but a line that change and become a bench, a portal or a container for activities



LIVE THE EX WATER CAVE



LIVE THE AGRICULTURE

FISH AND REST
The aim is to propose a function that permit to enjoy the abandoned water can. Little shelters could host fishermen and people who want to admire the spontaneous vegetation

VEGETABLE GARDENS
This part is a link between the urban conception of the green and the rural world. It is paved and equipped but it is possible to rent a piece of land or work in the common gardens to enjoy the rural life

