

CAPTION
PUNCTUAL ELEMENTS
 punctual constant elements

LINEAR ELEMENTS
 linear constant elements
 linear elements with the same traces but different function
 linear elements that have changed but still have a light memory of the original trace

AREAL ELEMENTS
 areal constant elements in time
 areal elements with the same traces but different function
 areal elements that have changed but still have a light memory of the original trace

MAIN ELEMENTS
 Po river bay
 1806-1869
 today
 Borgoforte
 1806-1869
 today
 Suzzara
 1806-1869
 today
 Gonzaga
 1806-1869
 today

Country / City Italy / Mantova
 University / School Politecnico di Milano, Polo Territoriale di Mantova, Master of Science in Architectural design and history
 Academic year 2016-2017
 Title of the project The Carolingian itinerary enanche by : among crops and industries
 Authors Francesca Bnà - Sara Ceschi - Maria Fernanda Lobo Plata





PERFORMATIVE NATURE

Barcelona International Landscape Architecture Biennial

September 2018 **Barcelona**

SCHOOL PRIZE

X International Landscape Architecture Biennial

Máster d'Arquitectura del Paisatge -DUOT - UPC

ETSAB- Escola Tècnica Superior

d'Arquitectura de Barcelona

Avenida Diagonal, 649 piso 5

08028 Barcelona-Spain

TECHNICAL DOSSIER

Title of the project	The Carolingian itinerary enanche by : among crops and industries
Authors	Francesca Bnà - Sara Ceschi - Maria Fernanda Lobo Plata
Title of the course	Planning in historical context studio
Academic year	2016/2017
Teaching Staff	Carlo Peraboni, Chiara Lanzoni, Chiara Giacomelli, Lucia Guaitioli
Department/Section/Program of belonging	Dastu - Dipartimento di architettura e studi urbani
University/School	Politecnico di Milano, Polo territoriale di Mantova, Master of Science in Architectural design and history

Written statement, short description of the project in English, no more than 250 words

The project starts with the enhancement of the Carolingian's way an historical road that crosses the Pianura Padana's landscape.

After the urban analysis, it was highlighted the lack of environmental and sustainable strategies from the main industries and of green connections and spaces. This situation was directly affecting the rural landscape, that is considered an important heritage for the territory.

The idea of agopuntura urbana was proposed to add value to this segment of the Carolingian's itinerary whit small and punctual interventions that will have a reflection also on a big scale. Analysing the activities, green roofs, solar panels and recycle techniques are introduced to improve the area. Another important aspect, it's the meeting between the industrial world with the countryside landscape and the containment of the first one, avoiding its expansion. To control these problems; some buffer zones are projected on the margins of the industrial area, that end with the addition of new rows of trees to complete the existing ones. Green areas for the resting area and open air activities, are also projected where abandoned industries are dismissed.

Another point of the project, it's the highlighting of the entrances in the area where a dismissed industry is rebuilt in a more ecological way. Its activity will be linked to the rural landscape and the local traditions.

The update and the integration of the historical roads to the nowadays planning of the cities; it's an important process. It's necessary to manage the heritage and to safeguard history in balance with innovation.

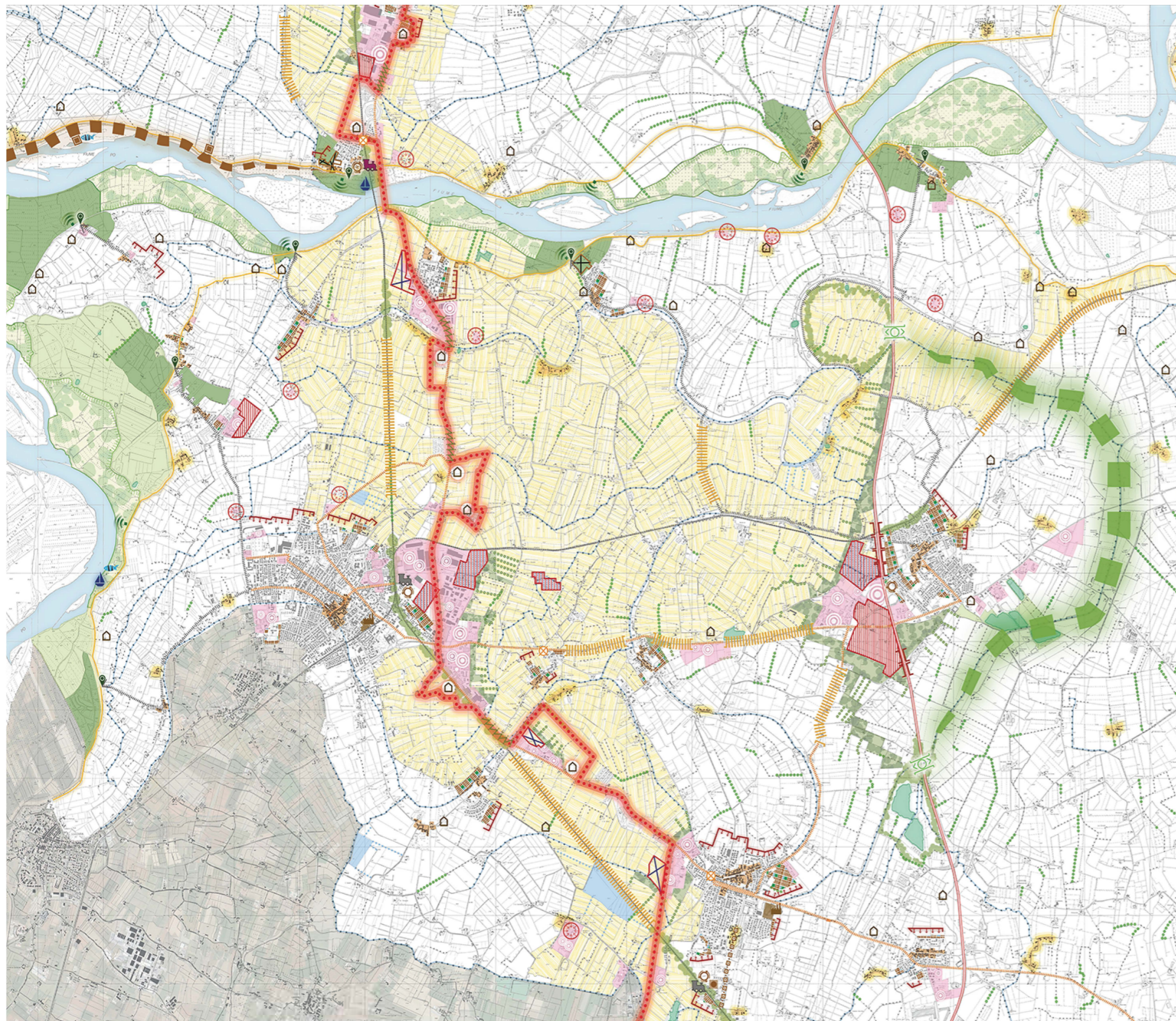
For further information

Máster d'Arquitectura del Paisatge -DUOT - UPC

T: + 34 93 401 64 11 / +34 93 552 0842

Contact via email at: biennial.paisatge@upc.edu

Consult the web page <http://landscape.coac.net/>



PROJECT TOPICS

EXISTING ELEMENTS

- mass of trees
- historic waterways
- railway
- highway
- PUS | san odoibano and san lorenzo parks

MAIN THEME

The value of the territory through the study of the European Cultural Routes. Via Carolingia the connection between Borgoforte and Gonzaga.

LANDSCAPE AND ECOLOGICAL SYSTEM

value and see tools that allow the appreciation of particular features with important values for the landscape and ecological system.

TO ADD

TO REINFORCE

TO STRENGTHEN

TO INVOLVE

TO RESTORE

TO INTRODUCE

TO COMPLETE

TO REDUCE

TO DEFINE

TO CONTROL

TO PROTECT

TO REINFORCE

TO COMPLETE

TO REDUCE

TO DEFINE

TO CONTROL

TO PROTECT

TO REINFORCE

TO COMPLETE

TO REDUCE

TO DEFINE

TO CONTROL

TO PROTECT

TO REINFORCE

TO COMPLETE

TO REDUCE

TO DEFINE

TO CONTROL

TO PROTECT

TO REINFORCE

TO COMPLETE

TO REDUCE

TO DEFINE

TO CONTROL

TO PROTECT

TO REINFORCE

TO COMPLETE

TO REDUCE

TO DEFINE

TO CONTROL

TO PROTECT

TO REINFORCE

TO COMPLETE

TO REDUCE

TO DEFINE

TO CONTROL

TO PROTECT

TO REINFORCE

TO COMPLETE

TO REDUCE

TO DEFINE

TO CONTROL

TO PROTECT

TO REINFORCE

TO COMPLETE

TO REDUCE

TO DEFINE

TO CONTROL

TO PROTECT

TO REINFORCE

TO COMPLETE

TO REDUCE

all the interferences between the residential areas and the infrastructures

TO

limit the acoustic and atmospheric pollution close the residential areas

THROUGH

- the use of insulation panels along the local roads, national roads and the highway
- the addition of rows of trees sideways of the railway and as a limit in the residential areas

TO DEFINE

the urban limits

TO

avoid undefined and uncontrolled expansion

THROUGH

- the control of the construction toward the historic city centre, in order to preserve the rural and ecological landscape. Thus to give value to the historic, cultural and social identity of the places
- the definition of expansion areas to complete the existing settlement and avoid the fragmentation of the urban area
- the elimination of the settlement expansion areas that interfere with the aims and the main themes of the project

TO CONTROL

the industrial areas dispersed in the territory (consolidated and projected)

TO

avoid the extension of the industries and the appropriation of all the countryside landscape

THROUGH

- the containment and the individuation of the isolated industries, placed along the countryside connectors (roads and water channels)
- the definition of the projected area for the industry. So where, there are isolated industries the expansions should be reason while the existing industrial parks must be maintained and planned
- the elimination of the projected industrial areas that interfere with the aims and the main themes of the project
- the definition of the projected industrial areas that are destined to activities linked to the tradition and the countryside landscape
- the rearrangement of the existing industrial areas, by the involvement of new vegetation between these areas and the residential areas
- the completion of the green belt by linking natural and urbanized areas along with the infrastructure system

TO PROTECT

the areas and the punctual elements that are characterized as important for the historical landscape and its evolution

TO

preserve the essence of the countryside evolution

THROUGH

- the preservation of the historical urban centre
- the conservation of the lecture of each individual element that has remained during time
- the preservation of the lecture of each area element that has remained during time
- the sign with of boundaries and spaces to safeguard the open field sight along the roads with landscape value

INFRASTRUCTURE SYSTEM

TO COMPLETE

the bike lane in the urban areas and connect such areas between them

TO

promote the passive way of transportation, to create security to bicycle users, to project a pleasant urban profile and finally to favor the tranquillization and reduction of the atmospheric pollution. Contributing in this way with the mitigation of pollution, since in this urban area the presence of industrial areas is significant

THROUGH

- the complement of the missing parts of the bike lanes in the cities and between Borgoforte, Suzzara, Gonzaga and Poggio
- rearrangement of the existing bike lane along the Po River banks

TO REINFORCE

the infrastructure for the transportation system (railway, roads and waterways)

TO

improve the transportation along the territory and to develop interchange nodes. Thus to allow the easy and fast access to the area and increase the tourism

THROUGH

- the upgrading of the existing parts in Borgoforte and Suzzara, and as well the urban renewal of the surrounding areas
- the enlargement of the Suzzara and Gonzaga railway stations
- the restoration and the reuse of Borgoforte railway station
- the introduction of traffic lights, pedestrian crossing, roundabouts and underpass roads, where it is possible and necessary

interchange nodes

- the organization of interchange points to connect the train stations, with bus stops and the bike lanes by introducing a service point
- the introduction of suitable bus stop next to each railway station
- the optimization of the connection between Gonzaga railway station and the fair, through bus and bike-lanes.

The Carolingian itinerary enanche by : among crops and industries





CONCEPTPLAN I the Carolingian itinerary enhanced by its context: among crops and industries

LANDSCAPE AND ECOLOGICAL SYSTEM

the incorporation of signs to the existing urban paths, in order to identify clearly the historic channels and important elements in the landscape

- the change of the flooring, by introducing horizontal and vertical signs along Carolingia's itinerary
- the location of rest stop areas along the itinerary to appropriate and enjoy the historical memory of the place
- the projection of a system for waterways control. An irrigation control system as a solution to control the level of the water and to water the fields and crops of the area**
- the containment of the water bodies, through the addition of low-statured vegetation
- the insertion of rows of trees to project the irrigation system for the countryside and nearby crops

SETTLEMENT SYSTEM

the involvement of the Carolingian itinerary in the reactivation of the historic buildings and abandoned places

- The restoration of the constructions to use them for local activities. In the case of the private buildings, these will be preserve and involve in this itinerary increasing the value of this path and enhancing the rural landscape
- the individuation of buildings with a local value along the Carolingia road. So, regarding the relevance of the building the path view will be open or closed
- the distinction of elements present in the landscape that are considered in the project. So, they will be enhanced and linked with the Carolingia's itinerary
- the distinction of important elements present in the landscape that are not considered in the project because they might interfere with the characterization of the landscape that the urban planning is aimed to
- the introduction of new tree species to direct the view, valorizing or dismissing certain spaces along the itinerary
- The projection of agricultural activities linked to the city. Thus the crops create a transition between the countryside and the city allowing a different lecture of the landscape. But the limit of the area is define by a green buffer zone. Special crops linked to the urban agriculture. This special treatment carries along its own vehicular, pedestrian and green connections

the recovery of the industrial buildings and industrial areas to link them to the needs and the traditions of the actual local production

- the preservation and the reuse of the local factory *F.lli Pinari* through the change of the use to a multifunctional building. The city can use such a structure, for example, to perform art shows and artistic displays since the municipal theatre Guido is not available

the organization of industrial areas by taking advantage and the reuse of the existing, abandoned, underused constructions in a more sustainable way

- the transformation of abandoned and underused industrial areas into sustainable buildings with strategies like reuse, rehabilitation, re-qualification and the adoption of sustainable technologies (green roofs, solar panels...)
- the integration through direct connections of the treated buildings with the Carolingia's itinerary
- the involvement of the buildings, that are linked with the Carolingia's itinerary, in a program of *agappuntura urbana*. These buildings would be used in activities related to the local traditions and to fit the needs of the community. This as an opportunity to link the industries with agriculture and traditional crops
- the projected industrial areas would be linked with productive activities related to the traditions and countryside landscape
- the individuation of the *I/VECO* factory to underline that this industrial area has certain relevance for the city. Besides it is private property, so it's impossible to intervene on it
- the introduction of a new building linked to the *I/VECO* industry, that would be used as a car parking in multiple stores. It is a strategy to control the expansion of the industry and to improve the use of land
- the maintenance of the urban plot in the industrial area

the containment of the existing industrial areas, by the involvement of new vegetation between these areas and the residential areas

- the introduction of buffer zones, including high stature vegetation (pioppeti). The incorporation of the trees is made to reduce the impact between the productive use, residential use and the landscape
- attach to the buffer zones, will be planned rows of trees that would linked the water bodies with landscape system and other green areas
- the elimination of dismissed industries to allow the insertion of green spaces, destined as an extension of the *agappuntura urbana* strategy
- In order to give continuity to the expansion area of the city, there will be introduced a *Urban Forest* complemented with public facilities. This urban section is planned to work also as a limit between the industrial areas and the urban settlement

the addition of rows of trees sideways of the railway and as a limit in the residential areas

- the addition of high stature vegetation (pioppeti) to control and reduce the environmental and acoustic impact produced by the railway

the definition of expansion areas to complete the existing settlement and avoid the fragmentation of the urban area

- the completion of the urban weave by defining the projected areas with, the order, the volumes, the principal spaces, the services, the commercial areas and the green spaces

the control of the construction toward the historic city centre, in order to preserve the rural and ecological landscape. Thus to give value to the historic, cultural and social identity of the places

- the restraintment of the urban areas through the insertion of traditional crops

the preservation of the historical urban centre

- to find a unique language on the building placed around the main square of Suzzara. The maintenance of these constructions has to be made with a certain periodicity (same colour plaster). In this same area it is imperative to preserve in a safety way, some buildings damaged during earthquakes, to reorganize the commercial activity in its original position

the containment and the individuation of the isolated industries, placed along the countryside connections (roads and water channels)

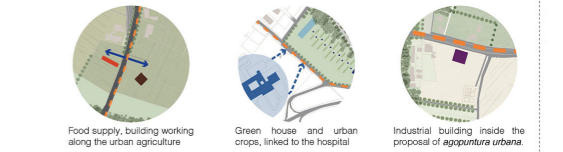
- the control of the industrial expansion of the isolated areas. Thus, is necessary to introduce a normative to preserve the places and the tradition (change the PTCF regarding this issue)

the sign with of boundaries and spaces to safeguard the open field sight along the roads with landscape value

- take care of these areas by introducing traditional crops
- the introduction of lookout structures to enjoy the open landscape
- the introduction of lookout structures to enjoy the historical buildings landscape
- the introduction of lookout structures to enjoy the industries landscape



Set up structures in the nodes where the city has a close relationship with the countryside and the existing infrastructure. Such constructions will work as a bridge between the two environments, like a sort of entrance. There are three entrances in the urban piece this project as focus on, each entrance works in relation with the strategy and treatment that characterize each area of the project.

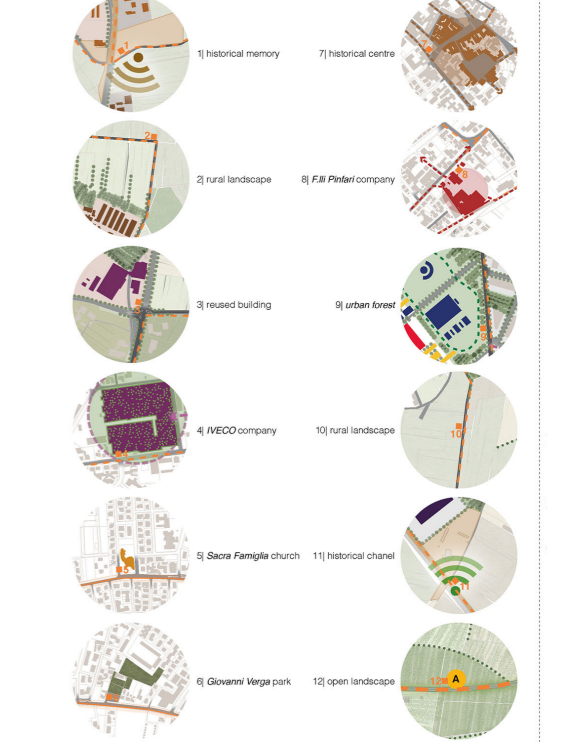


Food supply, building working along the urban agriculture
Green house and urban crops, linked to the hospital
Industrial building inside the proposal of *agappuntura urbana*

INFRASTRUCTURE SYSTEM

the complement of the missing parts of the bike lane inside the cities and between Borgoforte, Suzzara, Gonzaga and Pegognaga

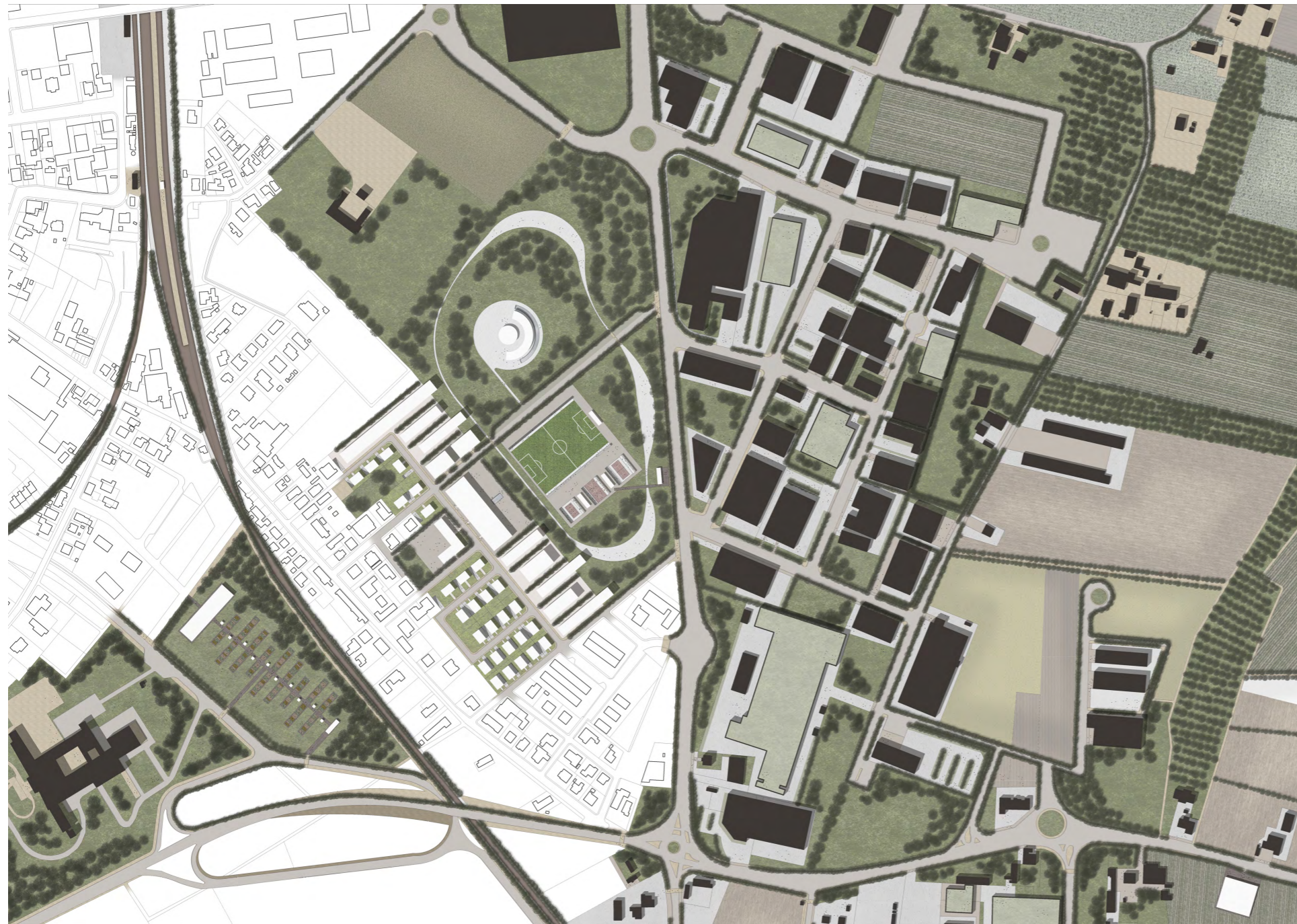
- the completion of the existing bike lanes where are missing. Thus, to connect the nodes of the city and the province
- the upgrade of the existing bike lanes. The change of the urban profile, by introducing and signs a better flooring
- the introduction of rest stops along the bike lanes, where there are some important and local points of the path



the enlargement of the Suzzara and Gonzaga railway stations

- the setting up of an underpass for pedestrian and bikes traffic next to the railway station, to favour and put in safe the access to the platforms
- the setting up of an underpass for automotive traffic next to the railway station, to favour the traffic flow
- the interventions regarding the Suzzara railway station and the nearby areas:
 - the reinstatement of the existing parking lot next to the railway station. This space needs to be pave and signalling
 - the construction of a building for services, such as bike rack, toilets, luggage storage, lockers and bar/restaurant
 - the projection of a covered bus-stop, to look up for a better order inside the railway station





agopuntura urbana

It's a strategy directed to a passive rehabilitation of the industrial sectors, through small insertions directed to increase the sustainability of the buildings and to weave in the countryside with the industrial areas. This intervention is applied through the introduction of new activities, garden roofs, solar panels and reuse systems.

the urban forest

The area is considered a filter between the new expansion district and the industrial sector. In this place, an urban forest is designed. It is also communicating with the Carolingia's way, so facilities for the citizens are projected: sport venues, a library and some poly-functional rooms.



the introduction of a new building

The *agopuntura urbana* plans the demolition of building in a bad conservation state. With these demolitions, a new industry linked to the activity of the countryside and the tradition is rebuilt nearby one of the main entrance of the project area, increasing its importance.



green house and the crops

Another entrance of the area is highlighted with the projection of a green house and some crops. These are placed in a dismissed space between the hospital and the railway station. The structures were thought to introduce pleasure and free time activities for the citizens of Suzzara.



railway station

The improvement of the railway station with the introduction of a pedestrian underpass to reach the platforms in a safe way. The re-qualification of the car parking, the introduction of a services block and a covered bus stop are projected.



1| the agopuntura urbana



2| new urban expansion and the sport area



3| the library in the urban forest



5| the green house and the urban crops

4| new industrial building inside the agopuntura urbana

