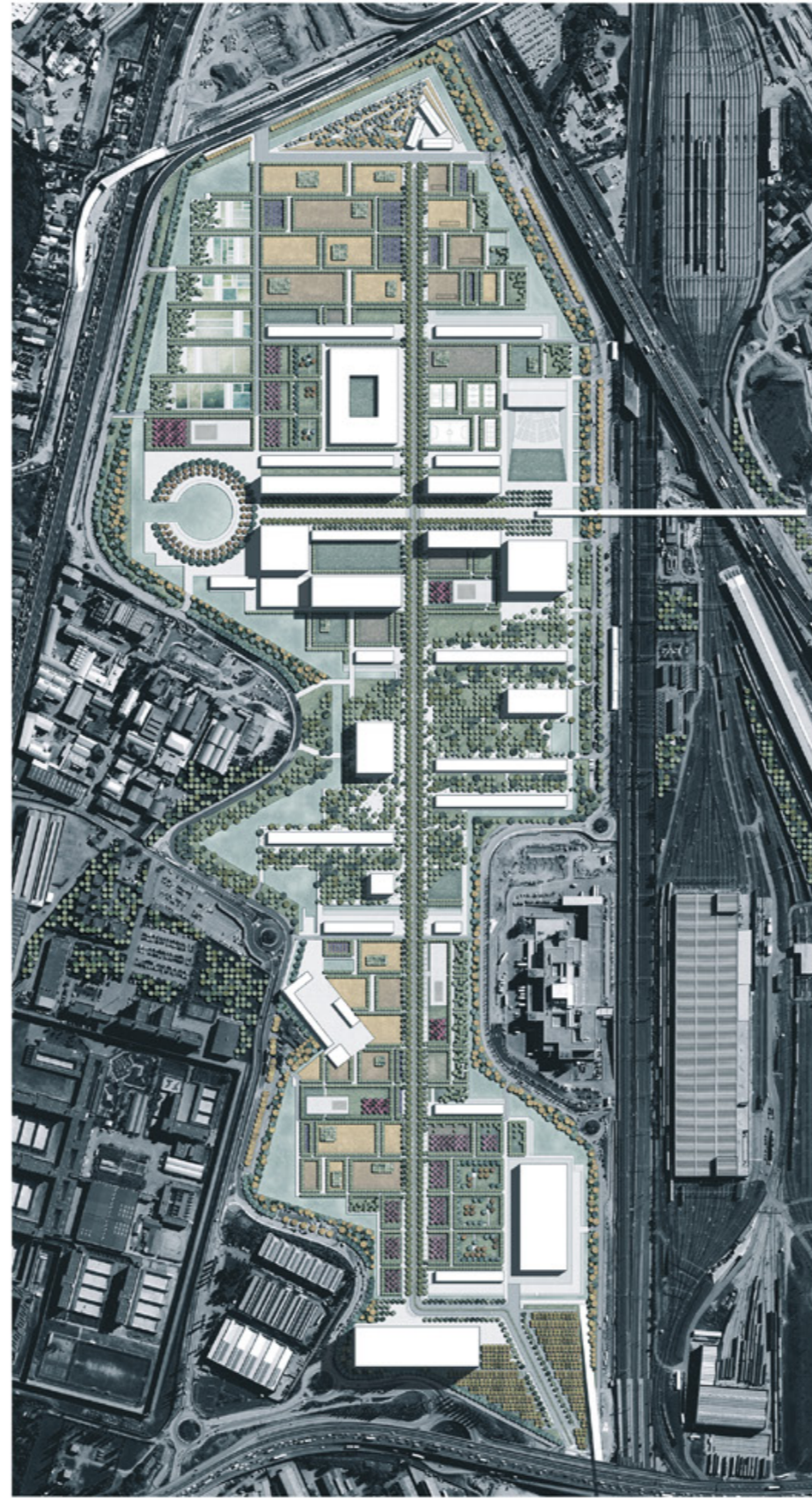
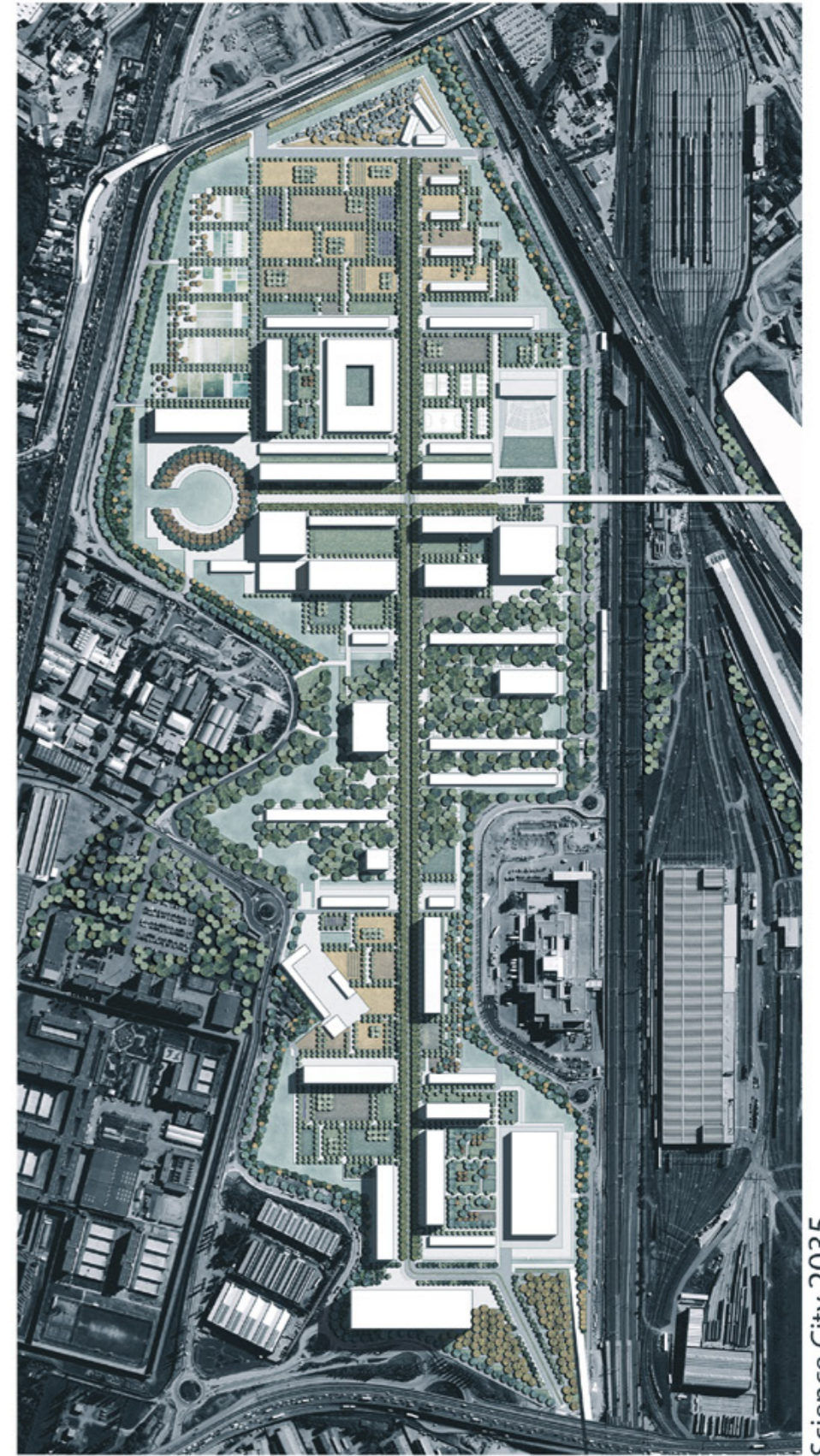


Agricultural Park 2020



Science Park 2025



Science City 2035

Country / City
University / School
Academic year
Title of the project
Authors

Italy / Rome
Università degli Studi di Roma Tre
2016/2017
Intermediate Landscapes. *Projects for Expo Milan 2020-2035*
Eleonora Ambrosio, Alessandro Maria Boschin





PERFORMATIVE NATURE

Barcelona International Landscape Architecture Biennial

September 2018 **Barcelona**

SCHOOL PRIZE

X International Landscape Architecture Biennial

Máster d'Arquitectura del Paisatge -DUOT - UPC

ETSAB- Escola Tècnica Superior

d'Arquitectura de Barcelona

Avenida Diagonal, 649 piso 5

08028 Barcelona-Spain

TECHNICAL DOSSIER

Title of the project Intermediate Landscapes. *Projects for Expo Milan 2020-2035*

Authors Eleonora Ambrosio, Alessandro Maria Boschini

Title of the course Master's Thesis

Academic year 2016 / 2017

Teaching Staff Professor Annalisa Metta

Department/Section/Program of belonging Department of Architecture

University/School Università degli Studi di Roma Tre

Written statement, short description of the project in English, no more than 250 words

The thesis starts from the question posed by the end of Expo on the future of an uncertain and suspended area, situated between two realities: the rapidly increasing city and the countryside that tries to resist it. Rather than predicting the prevalence of one over the other, it was chosen to let them interfere by accepting *time* as part of the project.

The proposal, in fact, unfolds in three moments, three **intermediate landscapes**, accomplished but not concluded, able to accept the space of the eventual. This is made possible by the fact that the project is articulated in *invariants* and *possibilities*. The main invariant is a double structure, a dual-scale landscaping framework, spatial backbone and settlement rule, consisting of rows of poplars that emphasize the existing regulatory layout, and a forest that crosses the boundaries of the area, reconnecting it to the territorial system of the agro-urban parks already present. Possibilities enrolled in it, as solutions for specific places, on the basis of the relationship between plural conditions and subjects over time.

Each intermediate landscape is therefore a hypertext, a recognizable project, functioning and part of a chaining, son of a posture that looks at forms as the result of forces acting on different subjects, in a negotiation of equilibriums to be ridefined within the dynamic field of the city because, as Gilles Deleuze once said:

"The world is neither true nor real, but living".

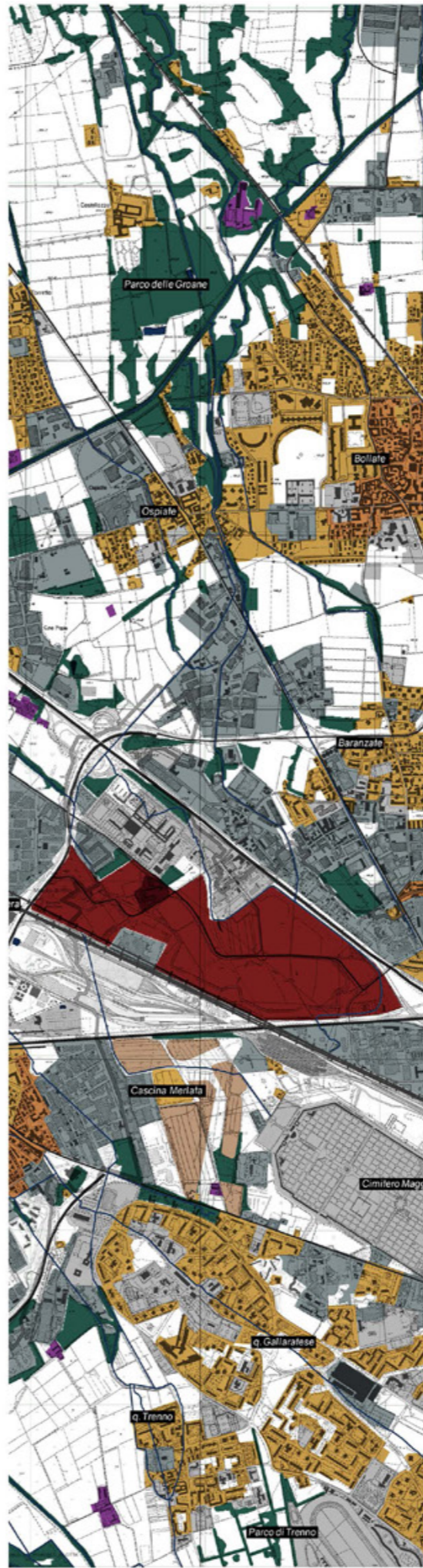
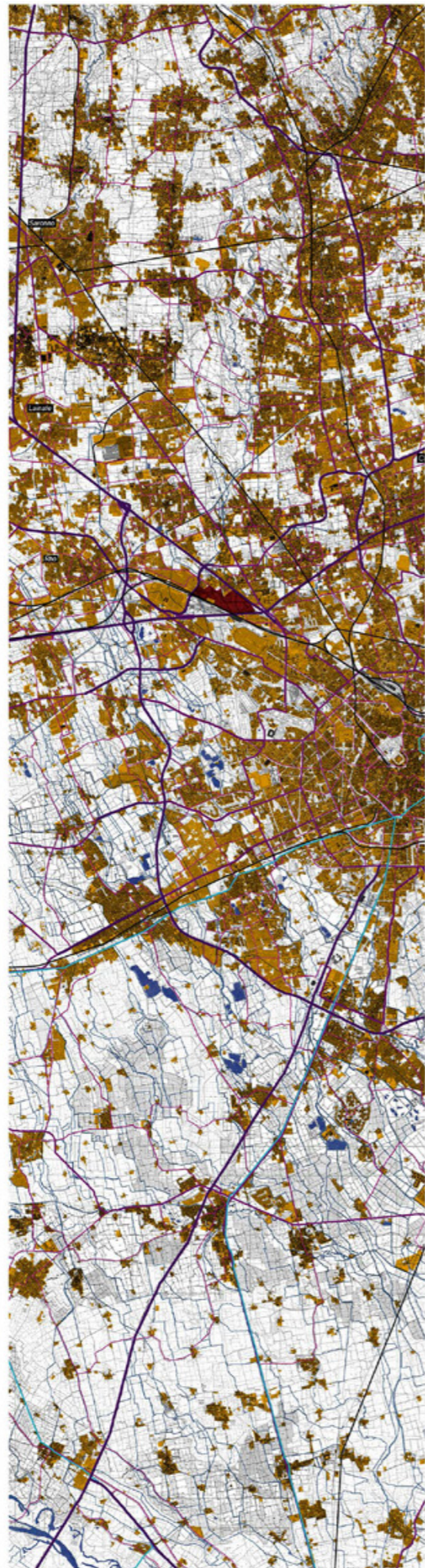
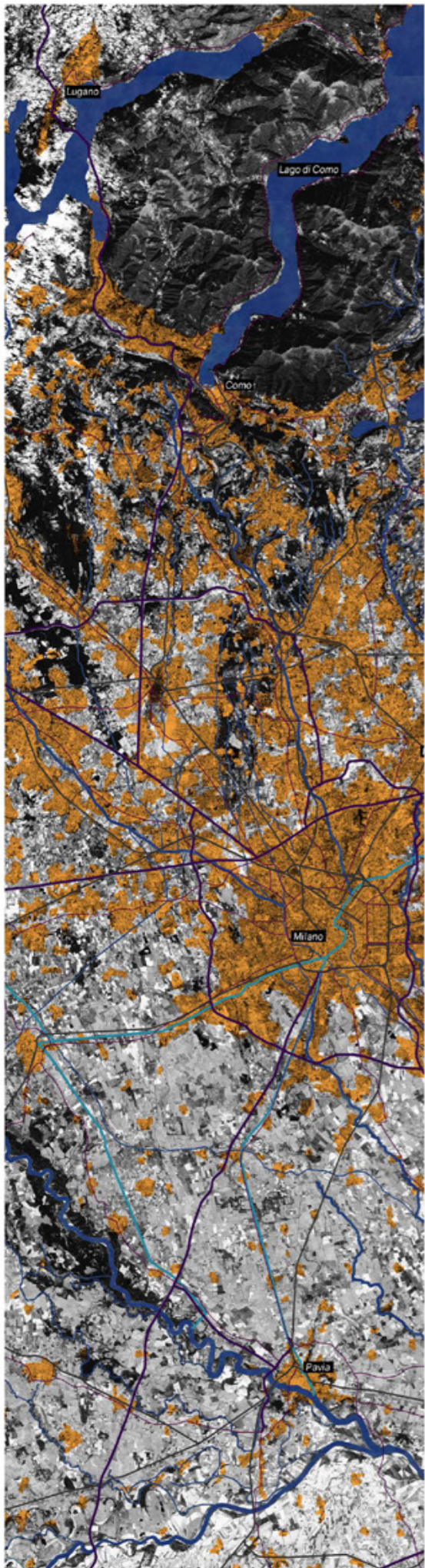
For further information

Máster d'Arquitectura del Paisatge -DUOT - UPC

T: + 34 93 401 64 11 / +34 93 552 0842

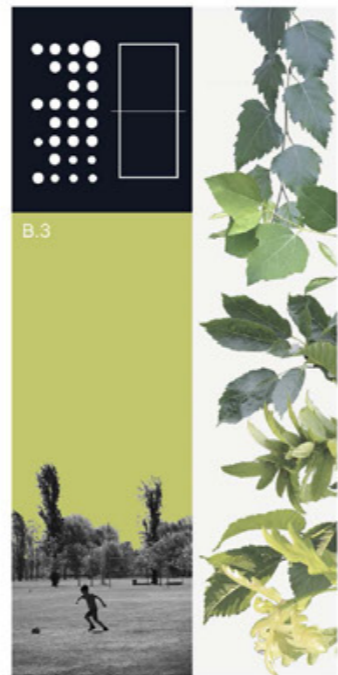
Contact via email at: biennial.paisatge@upc.edu

Consult the web page <http://landscape.coac.net/>



TRANSCALAR SURVEY: the work starts from the study of western Lombardy Territory up to the analysis of the Expo context

STRATEGY: territorial reconnections



2020

Boschetto formale su prato



Boschetto formale su pavimentazione



Campi sportivi



2025

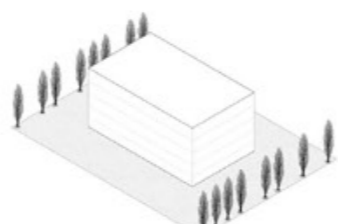
Boschetto formale su prato



Boschetto formale su pavimentazione



Edificio



2035

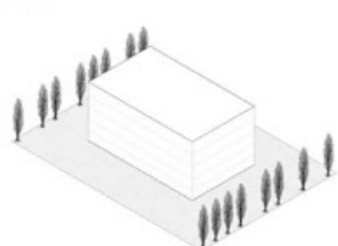
Boschetto informale su prato



Boschetto informale su pavimentazione



Edificio



BOSCO

Luoghi in evoluzione dinamica

BOSCO



Populus tremula

Altezza: 15 - 20m
Larghezza: 10 - 15m
Portamento: colonnare
2020: 3.007
2025: 597
2035: 198
Totale alberi: 3.802



Carpinus betulus

Altezza: 15 - 25m
Larghezza: 15 - 20m
Portamento: espanso
2020: 455
2025: 145
2035: 85
Totale alberi: 685



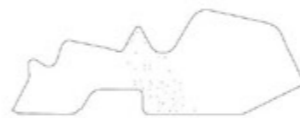
Fraxinus excelsior

Altezza: 25 - 35m
Larghezza: 10 - 15m
Portamento: piramidale
2020: 315
2025: 103
2035: 63
Totale alberi: 487



Betula ulmis

Altezza: 15 - 20m
Larghezza: 8 - 12m
Portamento: piramidale
2020: 228
2025: 81
2035: 42
Totale alberi: 351



Ulmus clusius

Altezza: 15 - 20m
Larghezza: 5 - 6m
Portamento: piramidale
2020: 165
2025: 51
2035: 44
Totale alberi: 260



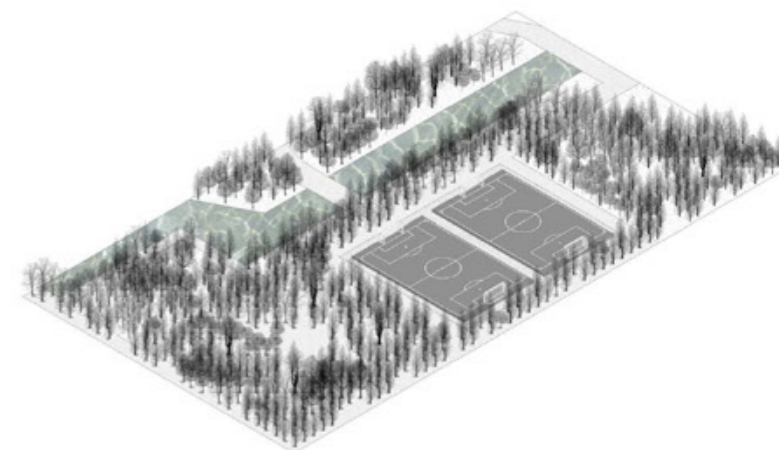
Quercus robur

Altezza: 25 - 35m
Larghezza: 25 - 35m
Portamento: espanso
2020: 48
2025: 46
2035: 42
Totale alberi: 138

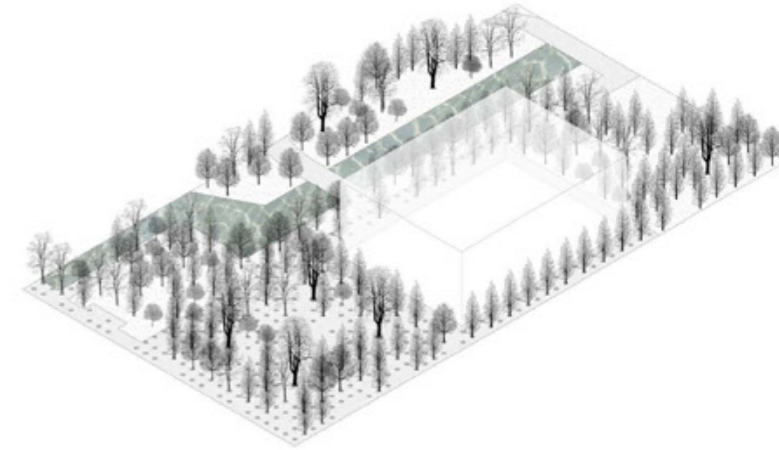
ALBERI

figure e materie

2020 - sport e gioco



2025 - piazza



2035 - piazza



10

