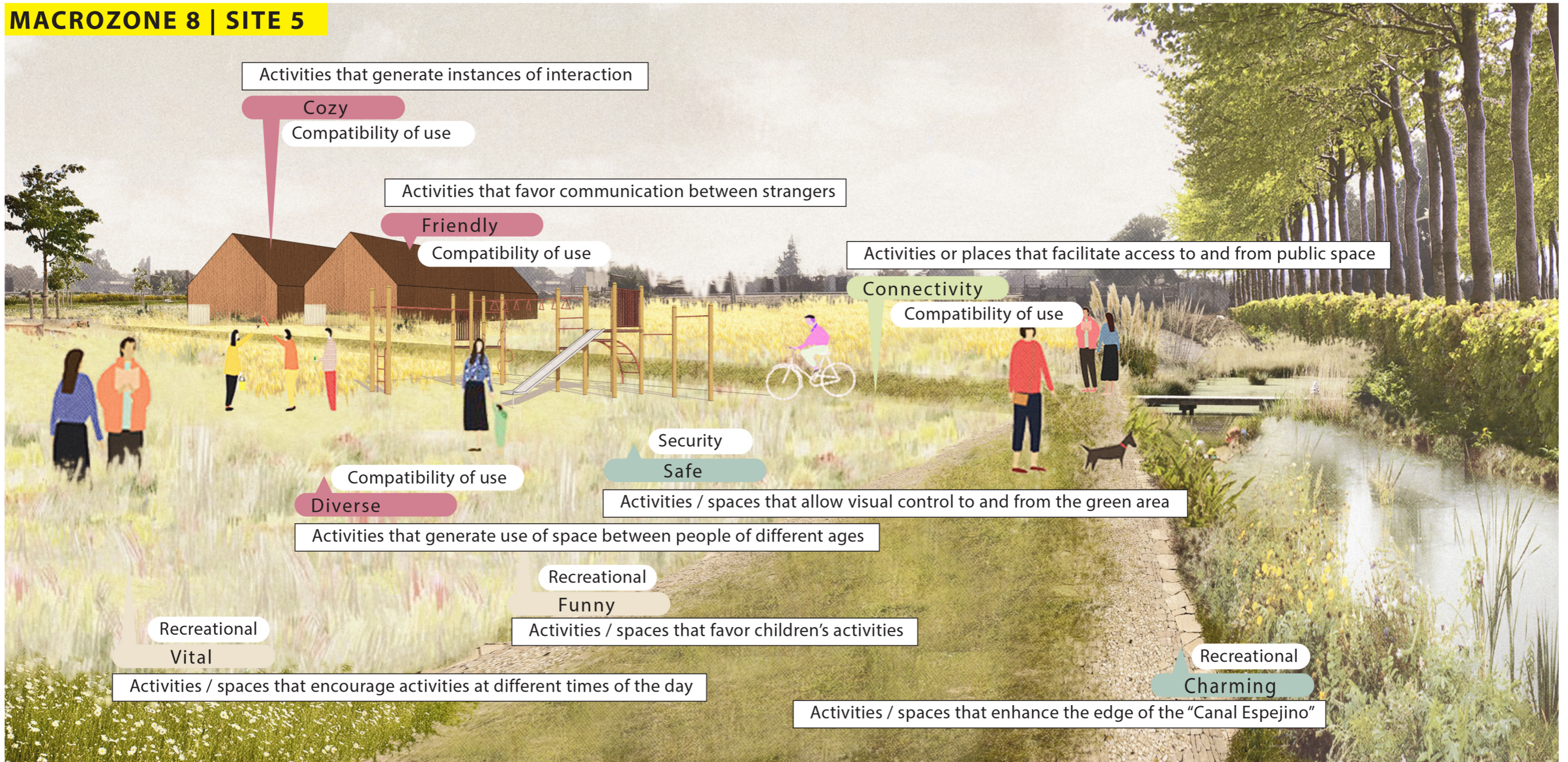


MACROZONE 8 | SITE 5



Proposal
Site 5

Country / City

University / School

Academic year

Title of the project

Authors

Chile, Santiago

Universidad Diego Portales

2018

Landscape measurement tool

José Ignacio Tello Barsocchini





PERFORMATIVE NATURE

Barcelona International Landscape Architecture Biennial

September 2018 **Barcelona**

SCHOOL PRIZE

X International Landscape Architecture Biennial

Máster d'Arquitectura del Paisatge -DUOT - UPC

ETSAB- Escola Tècnica Superior

d'Arquitectura de Barcelona

Avenida Diagonal, 649 piso 5

08028 Barcelona-Spain

TECHNICAL DOSSIER

Title of the project Landscape measurement tool
Authors José Ignacio Telo Barsocchini
Title of the course Thesis
Academic year 2018
Teaching Staff Pedro Pedraza
Department/Section/Program of belonging Magister Territory and Landscape
University/School Universidad Diego Portales

Written statement, short description of the project in English, no more than 250 words

This research tests the qualitative dimension of the landscape as a methodology to obtain indicators which guide the development of green areas under a systemic form referring to the visual (territorial) and emotive (social) dimension of the landscape, thereby obtaining representative and detailed indicators of the place that allow to diagnose the variables of design and management of future green areas with high precision. For this purpose, the research uses a resource that complements the two-dimensional vision often used when designing public space and reinterprets the landscape codes by walking and studying photographs and interviews with the inhabitants. The dimensions that were analyzed are restricted to two dimensions of study (1) Visual landscape analysis by the expert, which will highlight the state of conservation or damage of the existing resources available in the territory and (2) Perception of the subject-inhabitant about the public space, object that will reveal the most significant quality criteria for the interviewees, and along with it, strengthen the identity of the sector. Finally, the developed tool attempts to guide urban and political decisions towards an instrument capable of combining the visual and the emotive dimensions of the landscape as inputs for the management and development of green areas, in addition to specifying a specific diagnosis for the area in question, being an "urban thermometer" that prioritizes the most vulnerable sectors measured under the proposed indicators.

For further information

Máster d'Arquitectura del Paisatge -DUOT - UPC

T: + 34 93 401 64 11 / +34 93 552 0842

Contact via email at: biennial.paisatge@upc.edu

Consult the web page <http://landscape.coac.net/>

HERRAMIENTA DE MEDICIÓN DEL PAISAJE / LANDSCAPE MEASUREMENT TOOL

MEMORIA / ABSTRACT

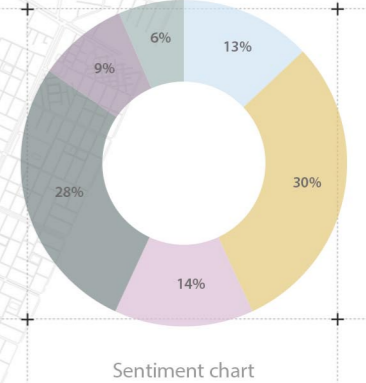
This research tests the qualitative dimension of the landscape as a methodology to obtain indicators which guide the development of green areas under a systemic form referring to the visual (territorial) and emotive (social) dimension of the landscape, thereby obtaining representative and detailed indicators of the place that allow to diagnose the variables of design and management of future green areas with high precision.

For this purpose, the research uses a resource that complements the two-dimensional vision often used when designing public space and reinterprets the landscape codes by walking and studying photographs and interviews with the inhabitants. The dimensions that were analyzed are restricted to two dimensions of study (1) Visual landscape analysis by the expert, which will highlight the state of conservation or damage of the existing resources available in the territory and (2) Perception of the subject-inhabitant about the public space, object that will reveal the most significant quality criteria for the interviewees, and along with it, strengthen the identity of the sector.

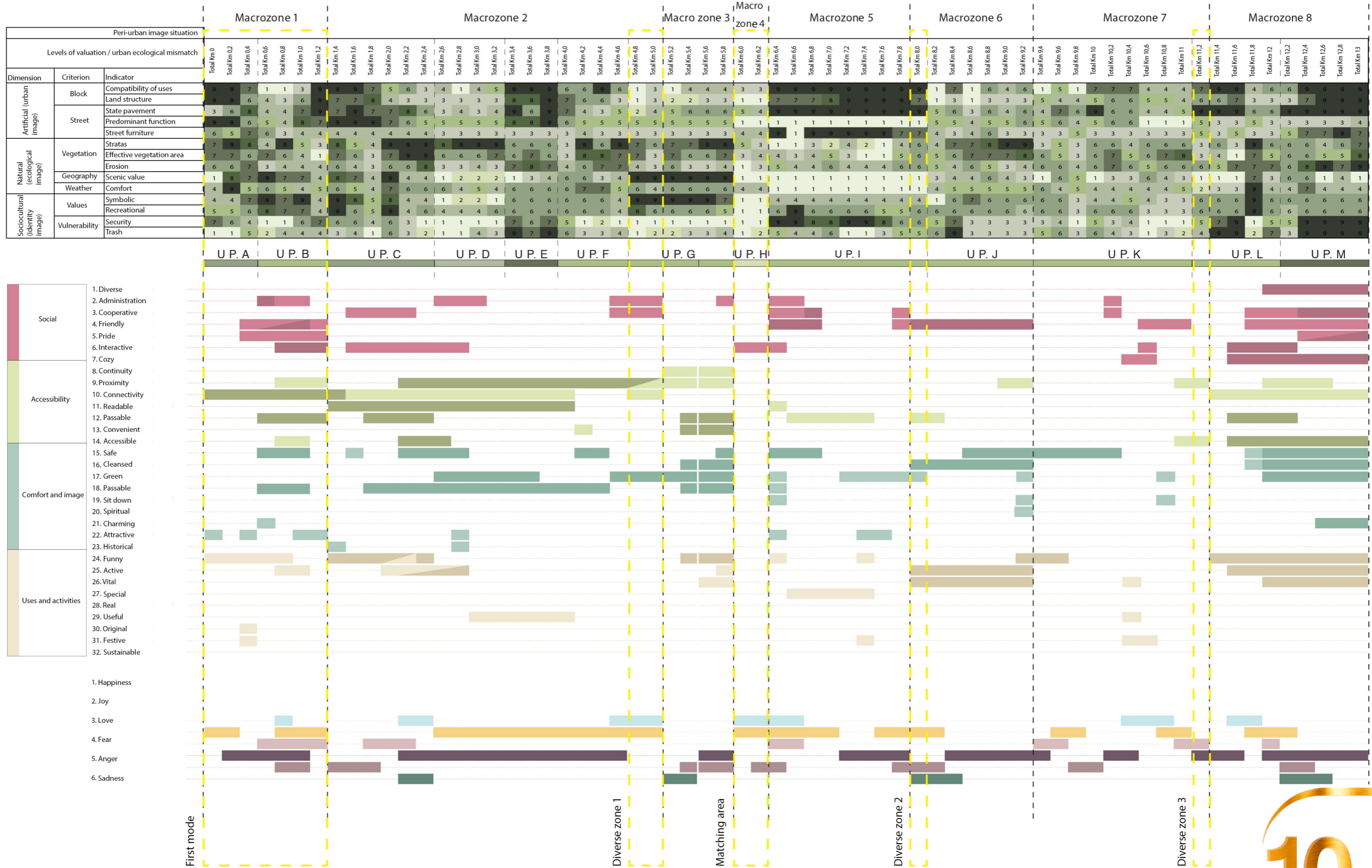
Finally, the developed tool attempts to guide urban and political decisions towards an instrument capable of combining the visual and the emotive dimensions of the landscape as inputs for the management and development of green areas, in addition to specifying a specific diagnosis for the area in question, being an "urban thermometer" that prioritizes the most vulnerable sectors measured under the proposed indicators.

PLAN MAESTRO COMUNAL / TERRITORIAL MASTER PLAN

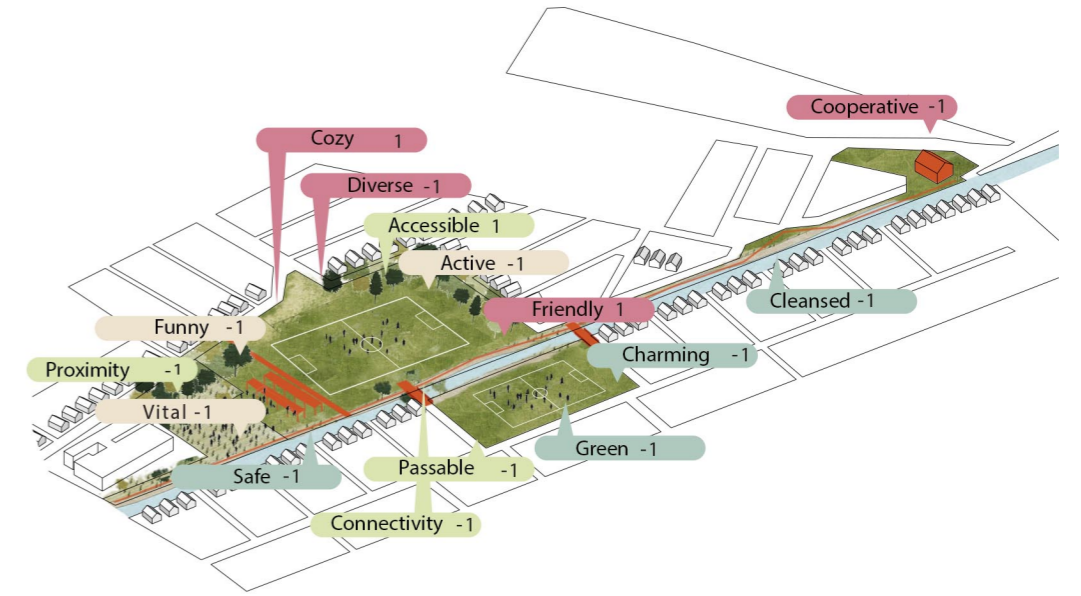
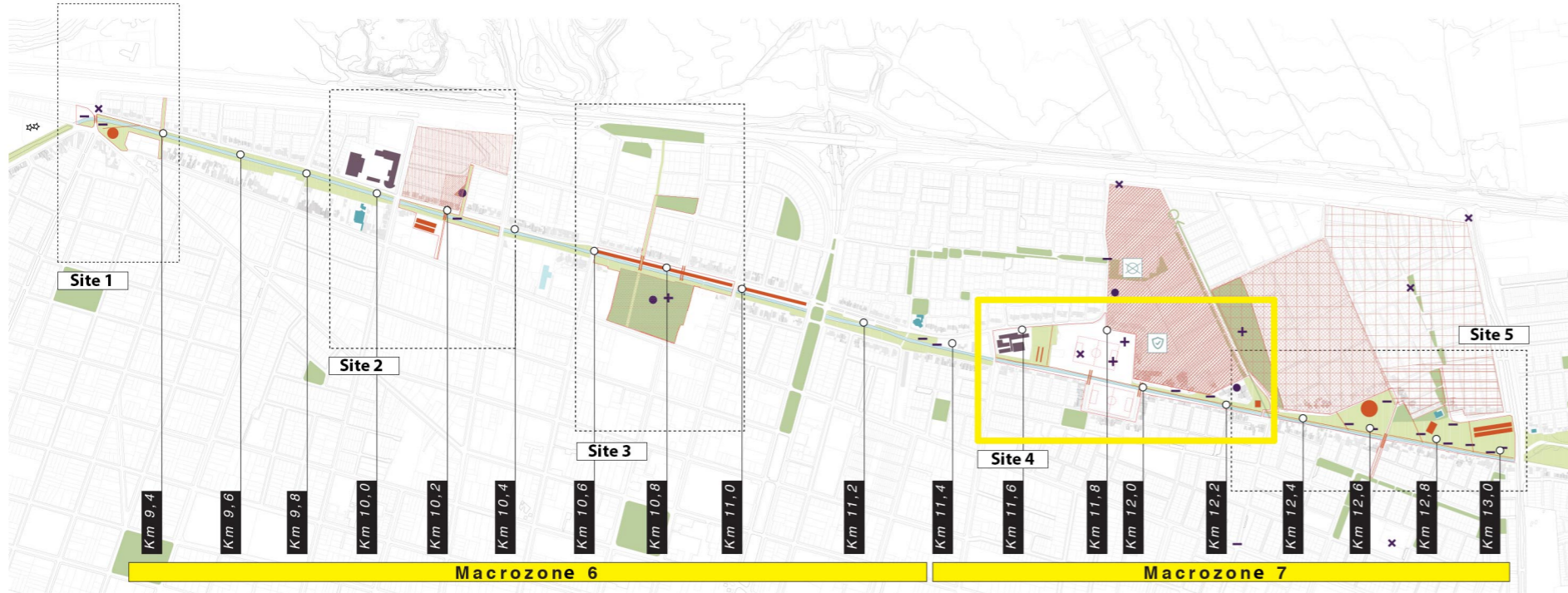
- Comfort & image
- Uses and activities
- Social
- Accessibility
- Influence area
- + Positive
- Negative
- x Reference
- Frequently used place
- Happiness
- Joy
- Love
- Fear
- Anger
- Sadness
- 1 repetition
- 2 repetition
- 3 repetition
- 4 repetition
- 5+ repetition



HERRAMIENTA DE MEDICIÓN DEL PAISAJE / LANDSCAPE MEASUREMENT TOOL



HERRAMIENTA DE MEDICIÓN DEL PAISAJE / LANDSCAPE MEASUREMENT TOOL



Site 1	Site 2	Site 3	Site 4	Site 5
Recreational	Compatibility of uses	Recreational	State pavement	Compatibility of uses
Funny	Cozy	Interactive	Passable	Diverse
Security	Cooperative	Vital	Recreational	Cooperative
Safe	Administration	Useful	Charming	Friendly
	Security	Festive	Funny	Cozy
	Safe	Predominant function	Active	Connectivity
		Proximity	Vital	Security
		Friendly		Safe



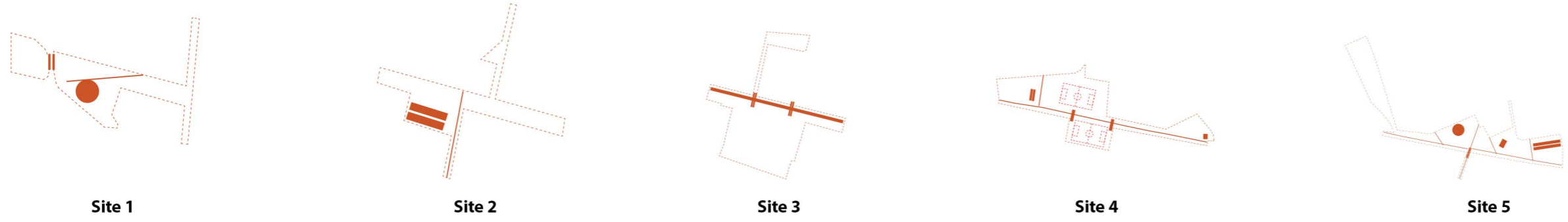
■ ■ ■ ■ ■

■ Social
■ Accessibility
■ Comfort & image
■ Uses and activities

+ Positive
- Negative
x Reference
● Frequently used place

Evaluated proposals

Sports
 Walking trails
 Dance
 Bridges
 Shady



10