

# MYTH AND HISTORICAL CULTURAL LANDSCAPE IN VENUS BIRTHPLACE

Country / City	ITALY
University / School	DEPARTMENT OF ARCHITECTURE "KORE" UNIVERSITY OF ENNA
Academic year	2016/2017
Title of the project	MYTH AND HISTORICAL CULTURAL LANDSCAPE IN VENUS BIRTHPLACE
Authors	STEFANO SALLEMI WORK TEAM





# PERFORMATIVE NATURE

Barcelona International Landscape Architecture Biennial

September 2018 **Barcelona**

SCHOOL PRIZE

**X International Landscape Architecture Biennial**

**Máster d'Arquitectura del Paisatge -DUOT - UPC**

ETSAB- Escola Tècnica Superior

d'Arquitectura de Barcelona

Avenida Diagonal, 649 piso 5

08028 Barcelona-Spain

## TECHNICAL DOSSIER

Title of the project *MYTH AND HISTORICAL CULTURAL LANDSCAPE IN VENUS BIRTHPLACE*

Authors *Stefano Sallemi work team*

Title of the course *Workshop project*

Academic year *2016/2017*

Teaching Staff *Prof.ssa Arch. Carmela Canzonieri*

Department/Section/Program of belonging *Department of Architecture and Engineering*

University/School *"KORE" University of Enna*

Written statement, short description of the project in English, no more than 250 words

*The design looks at an ancient landscape to capture at the different scales its identifying characteristics. We want to address the risks that the sough after tourism might bring with improved roads, sprawling of villages, loss of vegetation and of typical agricultural patterns. Around the upper villages afforestation areas of local pines, oaks are established, to limit expansion, to provide shade and a favorable microclimate. Almond groves mark the separation between the villages. More afforestation areas as ecological corridors and increased riparian vegetation link the hills to the lower lands. Orange groves are expanded in lowland areas near rivers, and mark a separation between coastal villages. Isolated ruins are grouped as archaeological sites and marked by vegetation. We suggest a hierarchy of roads, to obtain better connections at the higher level, and at the lower level keep their rustic character for pedestrian, bicycle and limited traffic. Different thematic routes are emphasized: the "citrus groves route", the "archaeological and scenic route", the "agricultural landscape" route and a "pedestrian seaside route". Along these ecotourism wood cabins or daytime shelters are hidden. The dramatic morphology suggests a largescale approach to the observation of the sky. At the confluence of two creeks, near the mythological Venus birthplace, a center point establishes concentric arcs at different elevation, along which stepped observation areas occupy strategic points. Three major alignments are designed: the Venus Axis pointing to where the planet is during summer, another one pointing to the North Star and another one towards the Milky Way.*

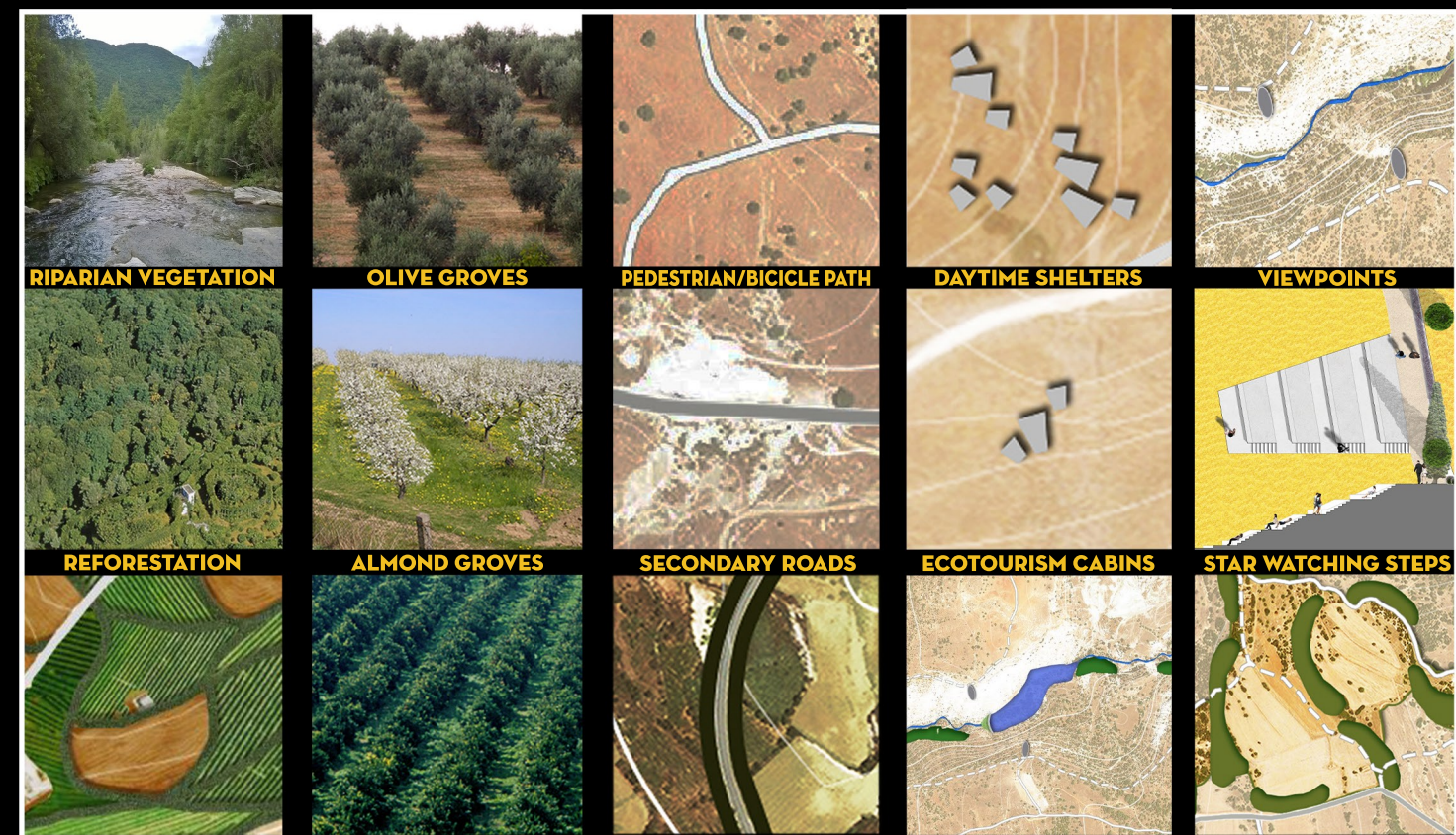
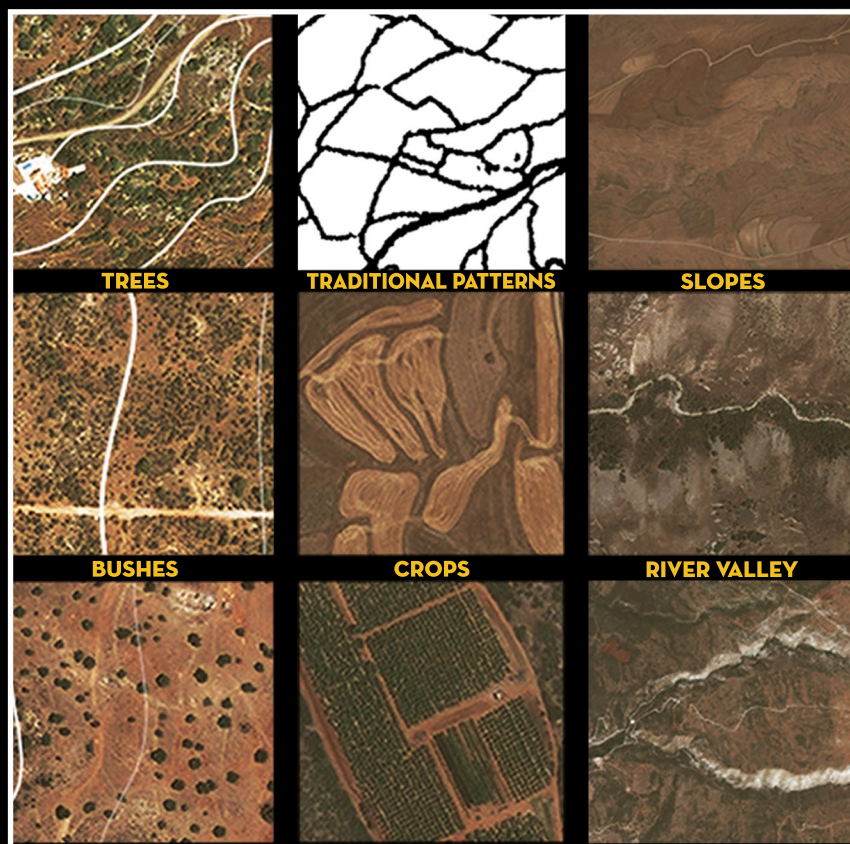
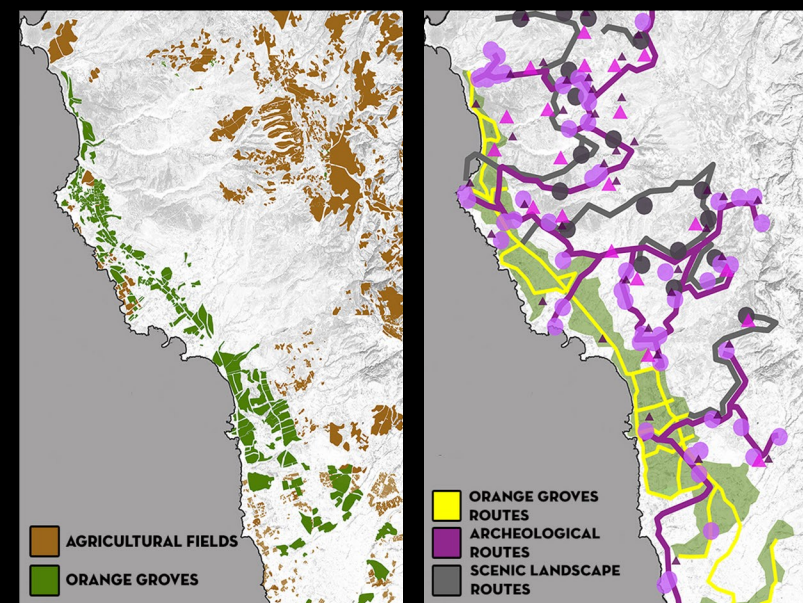
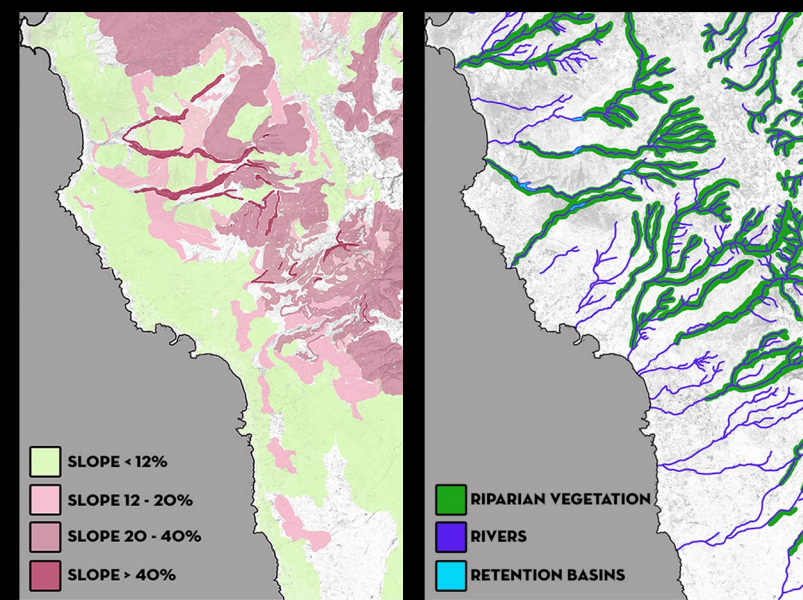
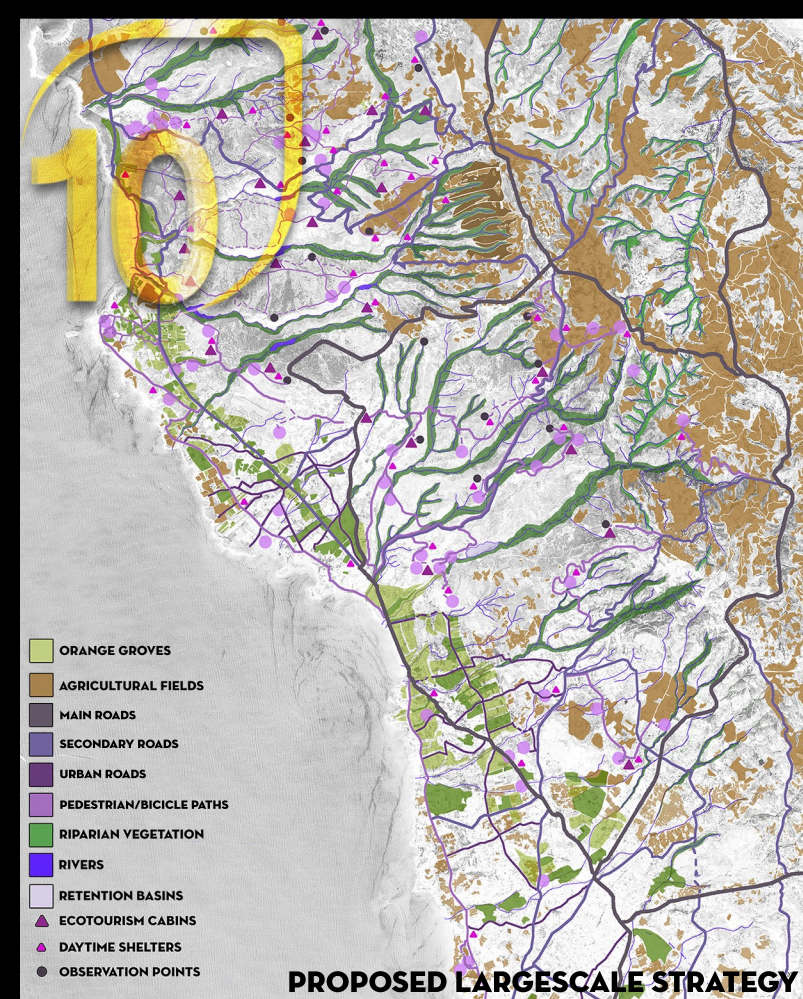
For further information

**Máster d'Arquitectura del Paisatge -DUOT - UPC**

T: + 34 93 401 64 11 / +34 93 552 0842

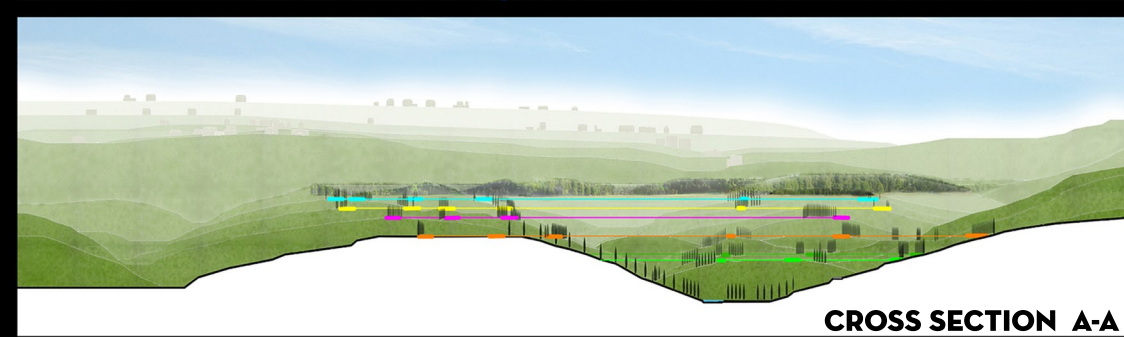
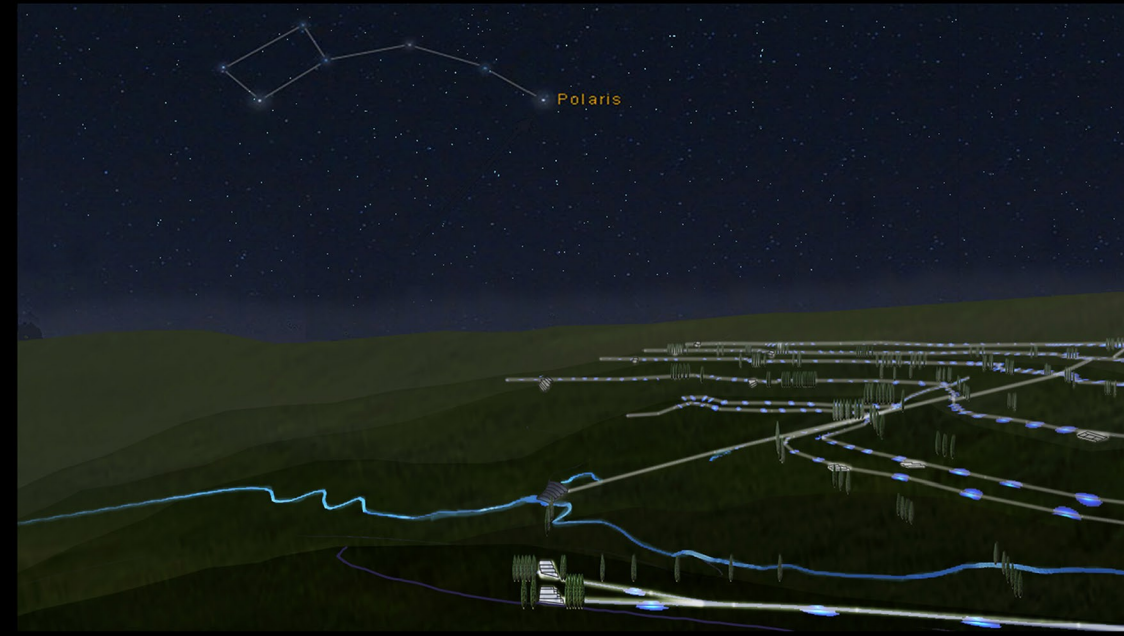
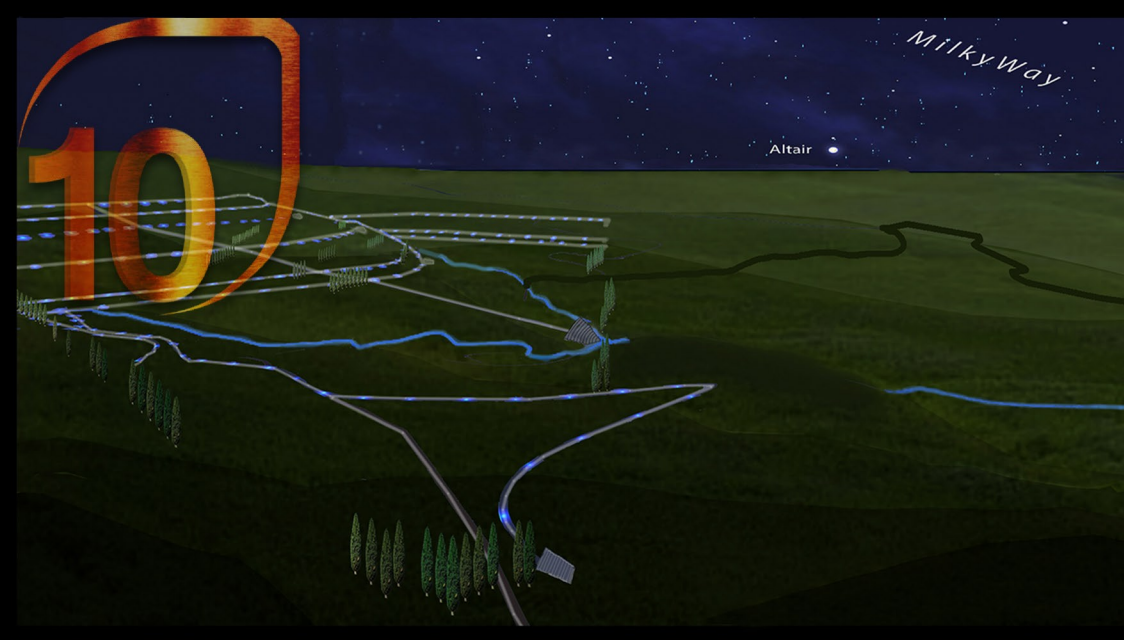
Contact via email at: [biennial.paisatge@upc.edu](mailto:biennial.paisatge@upc.edu)

Consult the web page <http://landscape.coac.net/>

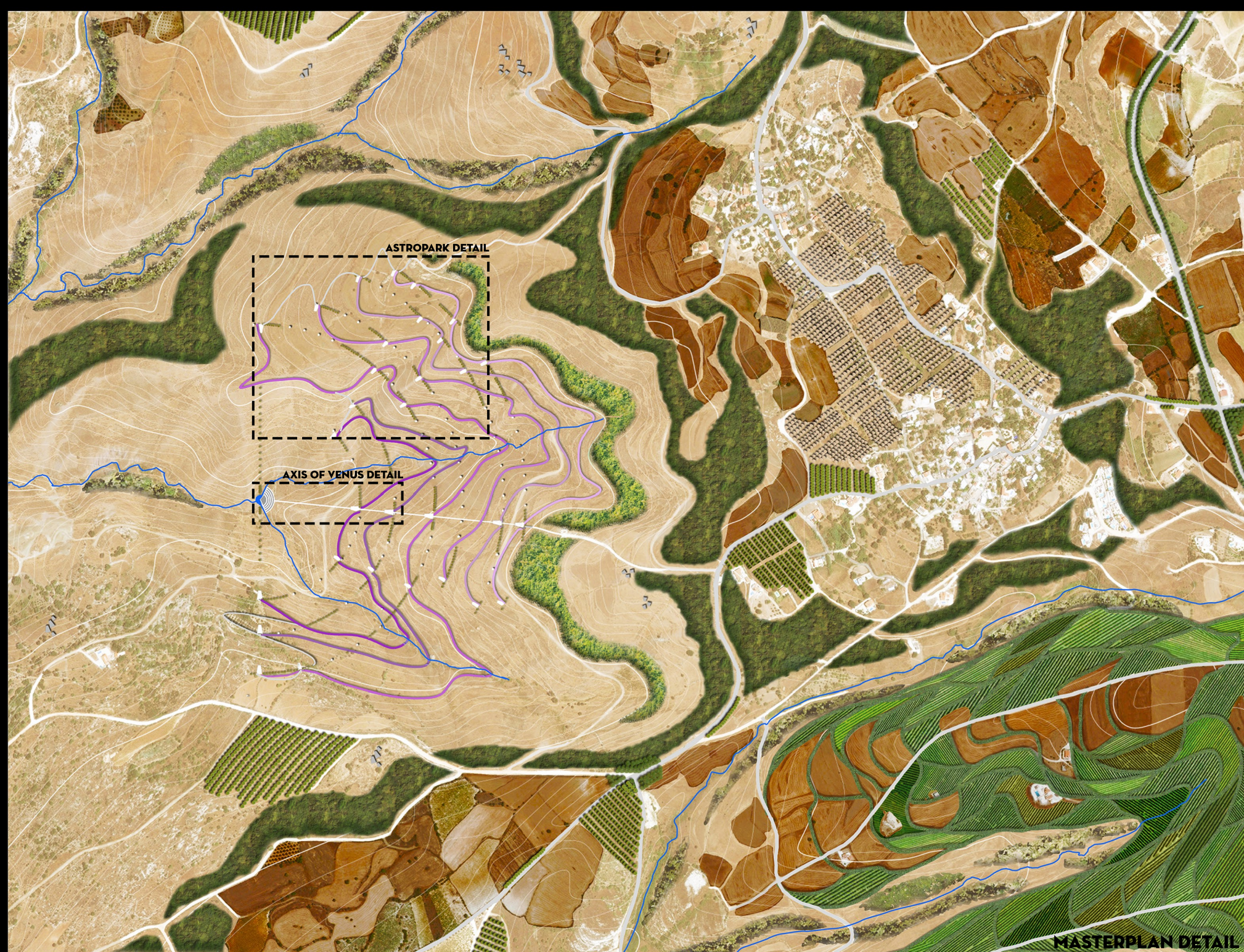


**EXISTING ELEMENTS**

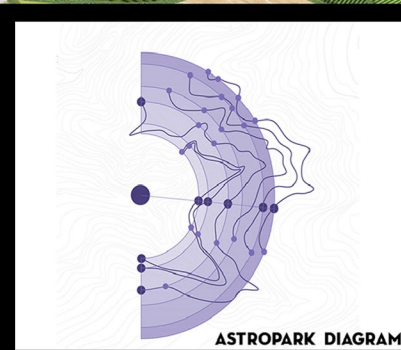
**PROJECT ELEMENTS**



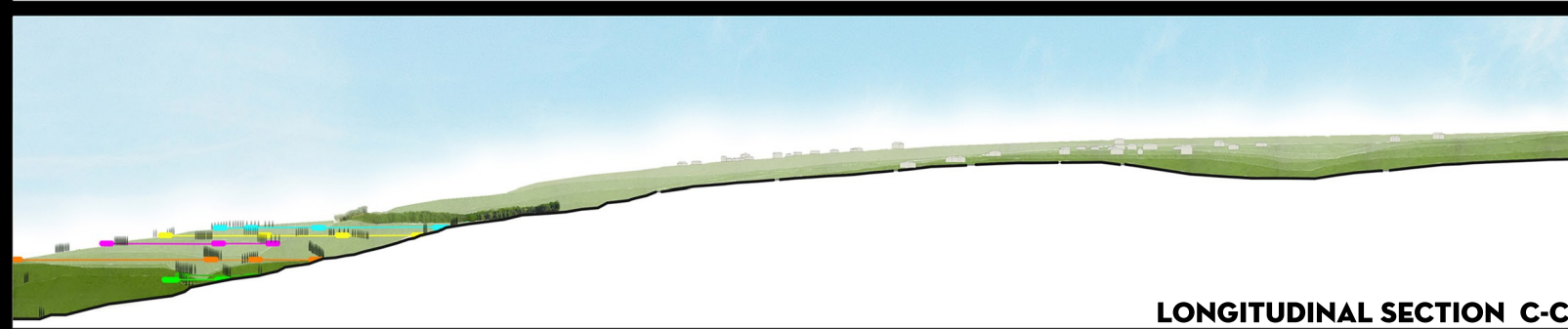
CROSS SECTION A-A



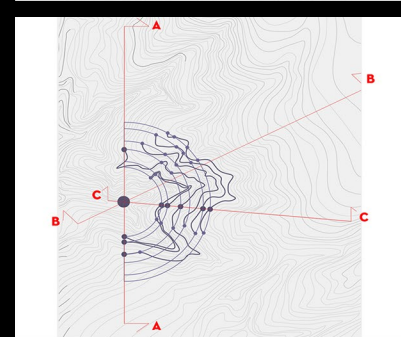
LONGITUDINAL SECTION B-B



ASTROPARK DIAGRAM

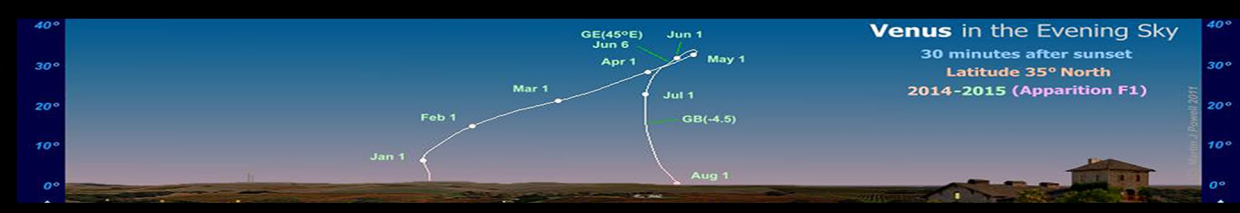


LONGITUDINAL SECTION C-C

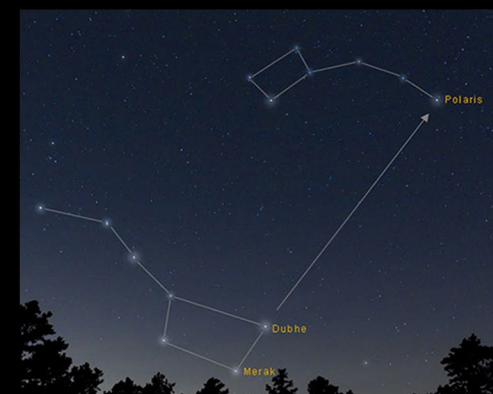




ASTROPARK DETAIL



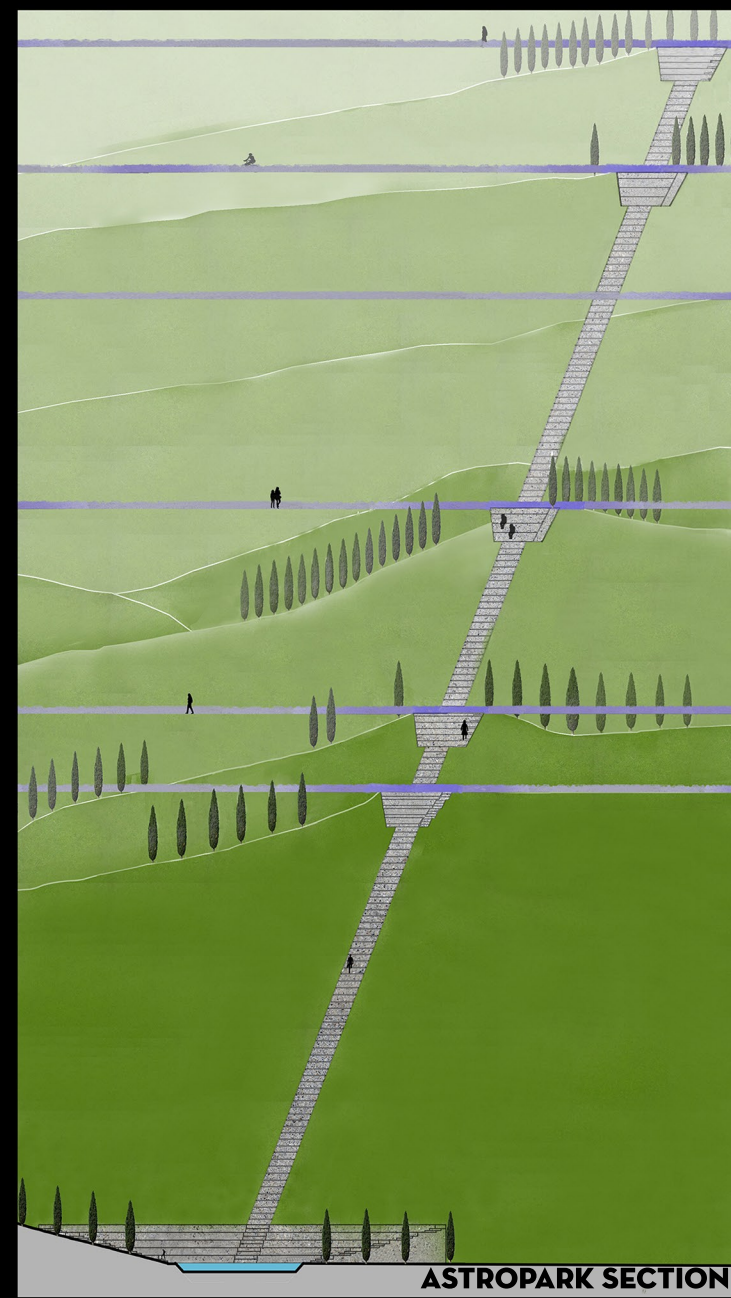
AXIS OF VENUS ORIENTATION



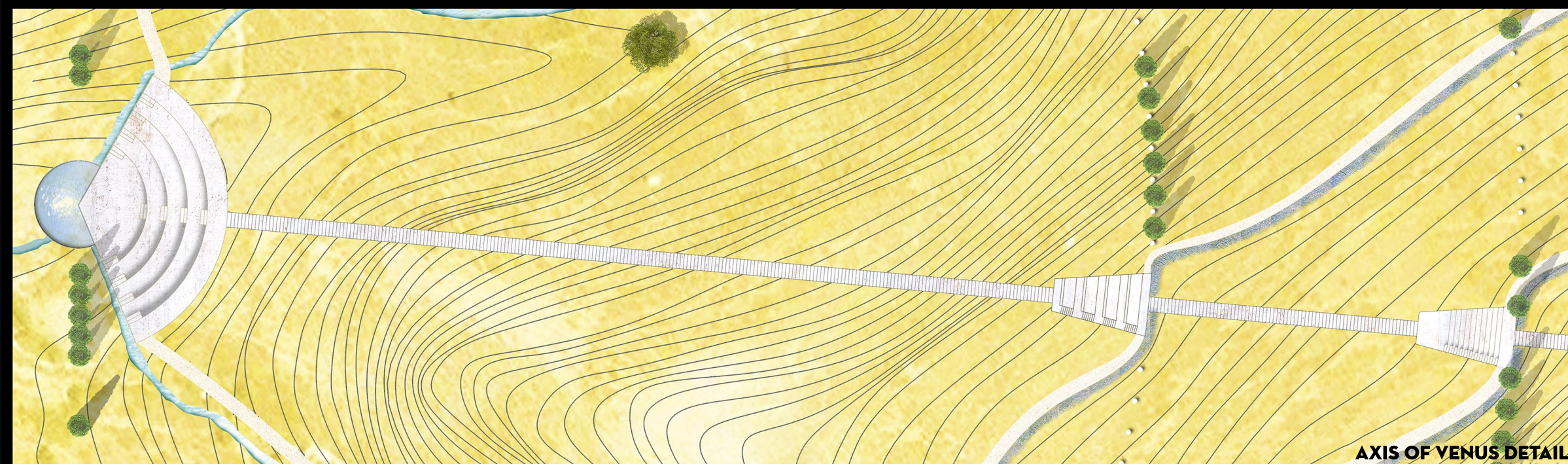
AXIS OF VENUS ORIENTATION



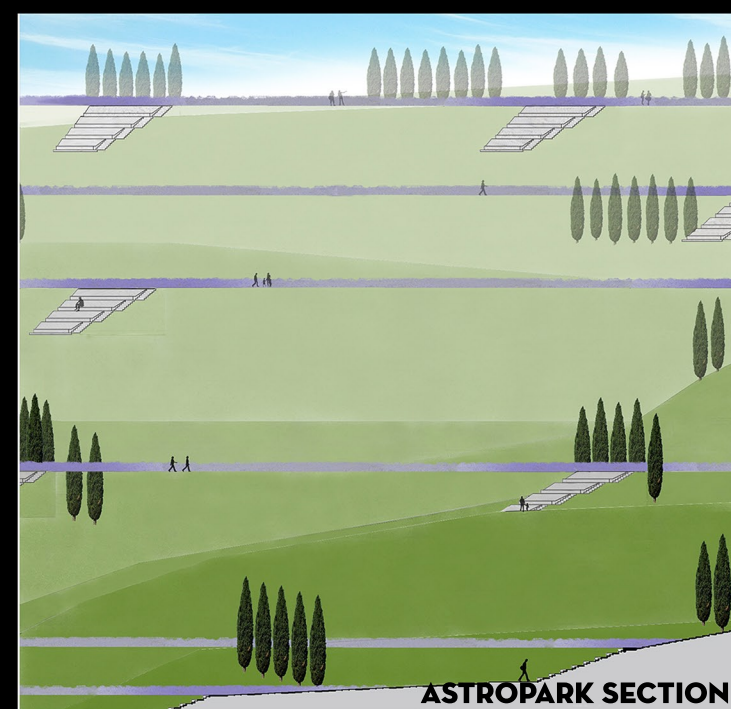
OBSERVATION POINT DETAIL



ASTROPARK SECTION



AXIS OF VENUS DETAIL



ASTROPARK SECTION