

Country / City Italy, Milan

University / School MSc Landscape Architecture _ Land Landscape Heritage, AUIC School

Academic year 2017-18

Title of the project 3 ARCHITECTURE

Authors Cecilia Porta





PERFORMATIVE NATURE

Barcelona International Landscape Architecture Biennial

September 2018 **Barcelona**

SCHOOL PRIZE

X International Landscape Architecture Biennial

Máster d'Arquitectura del Paisatge -DUOT - UPC

ETSAB- Escola Tècnica Superior

d'Arquitectura de Barcelona

Avenida Diagonal, 649 piso 5

08028 Barcelona-Spain

TECHNICAL DOSSIER

Title of the project 3architecture _ A new atmosphere for San Cristoforo
Authors Cecilia Porta
Title of the course Urban and rural open spaces network and parks design studio
Academic year 2017-18
Teaching Staff Paolo Bürgi, Antonio Longo
Department/Section/Program of belonging
MSc Landscape Architecture _ Land Landscape Heritage, AUIC School
University/School Politecnico di Milano

Written statement, short description of the project in English, no more than 250 words

3 ARCHITECTURE is a landscape project placed along the Naviglio Grande in a fragmented local node of large scale infrastructure (canals, rivers, railwais and main roads) near the center of the city of Milano. The layout is a simple architecture of trees, surfaces, pathways and bridges in order to connect different part of the city and generate a new system of open public spaces.

Five different species of threes like Platanus occidentalis; Carpinus betulus; Salix alba; Acer campestre and Corylus avellana, drive and compose different vegetal associations, design shapes and colours which underline the topography of the site. The project considers the exstension of the "movida" area of the Navigli towards a new quite public space, open to different and new populations of the metropolis.

The project is one of the first outcomes of the new international Master in Science in Landscape Architecture _ Land Landscape Heritage by the AUIC School of the Politecnico di Milano. Land Landscape and Heritage puts in a nutshell an original combination of disciplines that are strictly related to the specificity of the Italian and European contexts and contemporary landscape challenges.

For further information

Máster d'Arquitectura del Paisatge -DUOT - UPC

T: + 34 93 401 64 11 / +34 93 552 0842

Contact via email at: biennial.paisatge@upc.edu

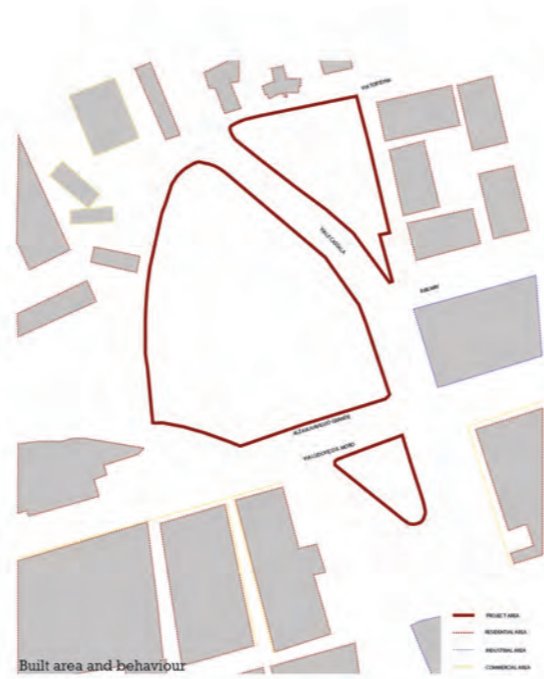
Consult the web page <http://landscape.coac.net/>

3 ARCHITECTURE starts from an analysis of the area and its surrounding, with a particular attention to parks and sport centres around San Cristoforo, in the municipality of Milan and out of it, like in Cesano Boscone, Corsico Milanese and Ronchetto sul Naviglio.

All the analysis of the project area are made with a stress on behaviour, historical preceses, infrastuctures and barriers present in San Cristoforo. These aspects are visible in the images titled: *Built area and behaviour*; *Three line of different uses*; *Historical heirtag*; *Infrastuctures as barriers*.

Moreover, all the project is put in practice with a creative proces, beginning with an anlyisis about how people move toward the site, going on with a study of new geometies for the park and a shadow analysis of the Tree Architecture, the main part of the project. All the aspects are visible in the imges titled: *Connections to be realized*; *Geometry of the park*; *Shadow analysis: morning*; *Shadow analysis: afternoon*.

Finally, the project was put in practice with the plan, last image.



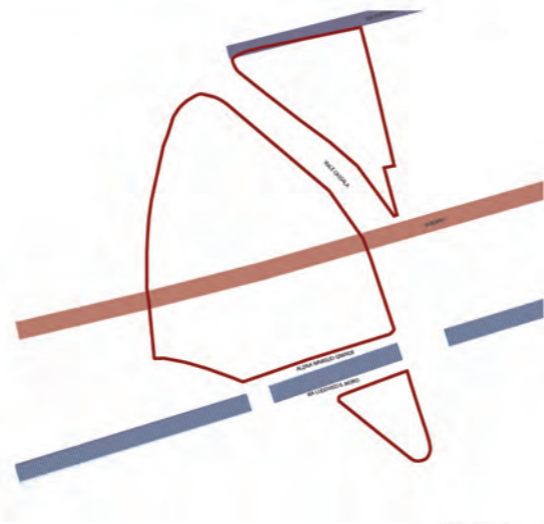
Built area and behaviour



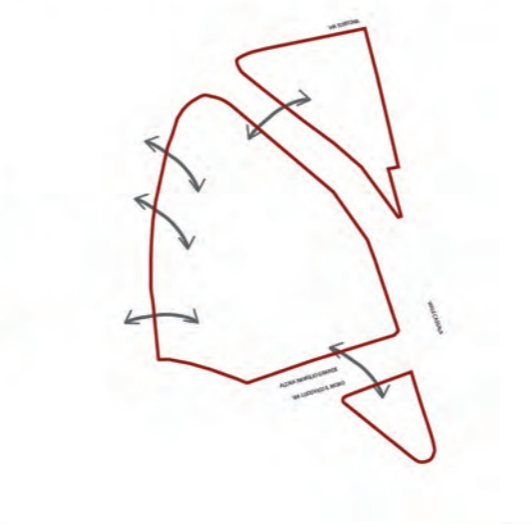
Infrastructures as barriers



Shadow analysis: morning



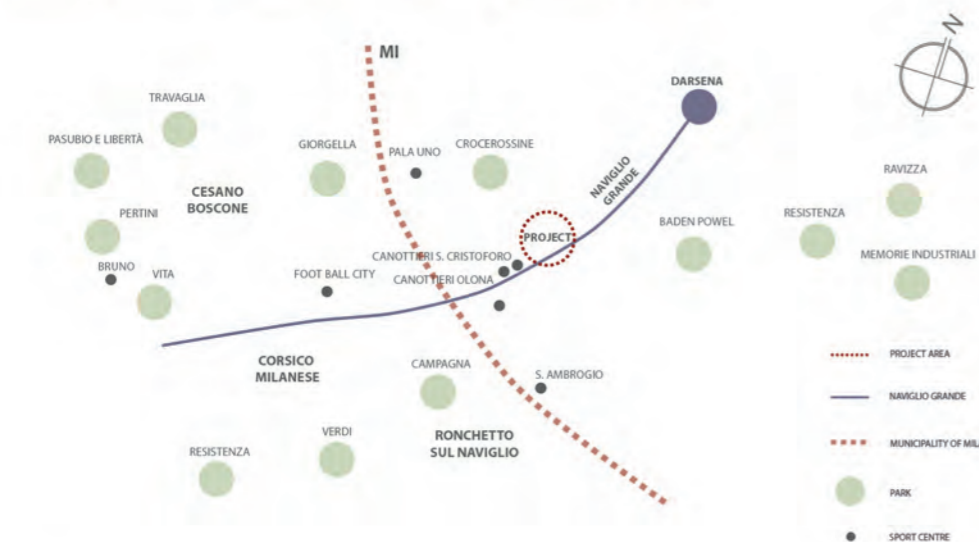
Three line of different uses



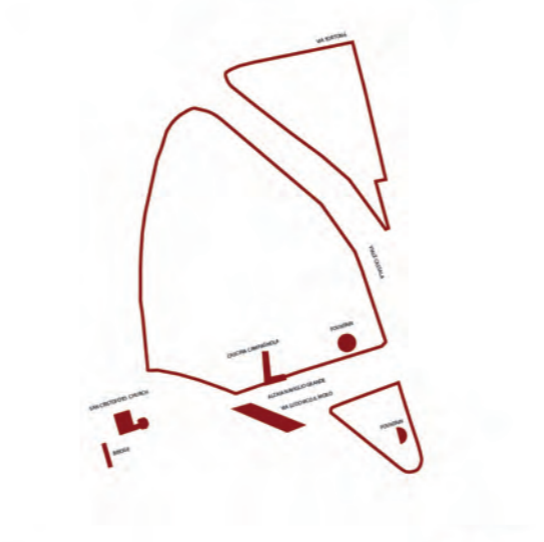
Connections to be realized



Shadow analysis: afternoon



A context analysis: Parks and sport centre around the project area



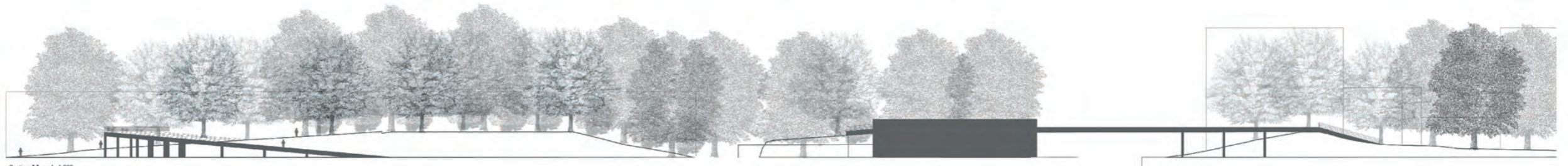
Historical heritage



Geometry of the park



Plan scale: 1/500



Section AA, scale 1:500

Section BB scale 1:500





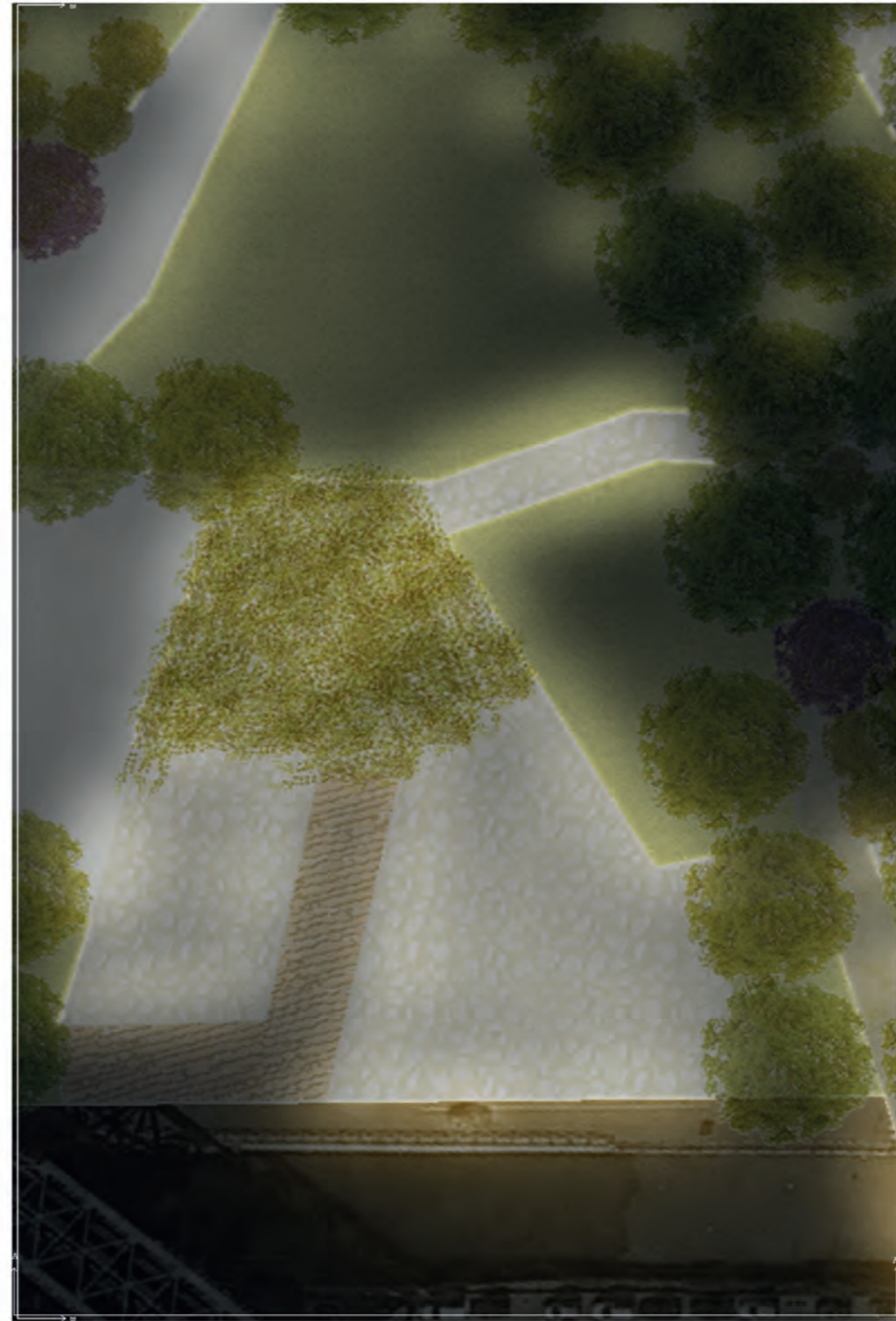
Spring is coming, let's play in the snowy day, some exceptional situation, park



Snowy day, some exceptional situation

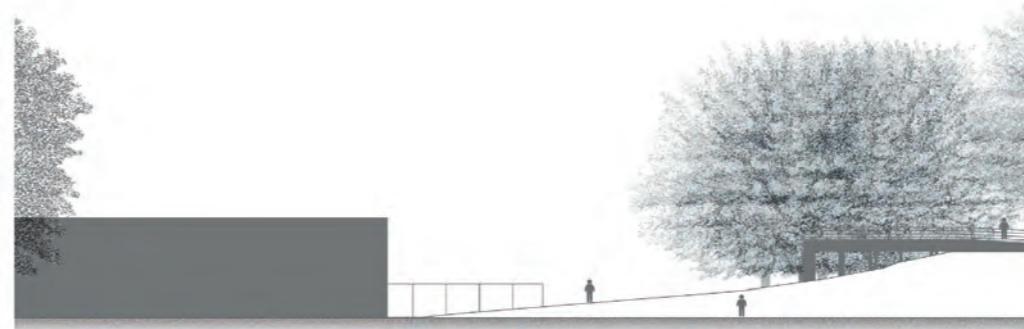


Spring time, back to park



0 25 50

Plan, scale 1:200



Section AA, scale 1:200



Section AA, scale 1:200

