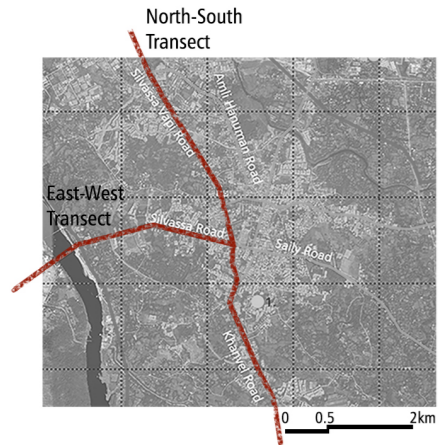


CREATING "PERI- URBAN IDENTITY"



Pictures of Silvassa Town



Country / City	India, Ahmedabad
University / School	CEPT University
Academic year	2017-18
Title of the project	Creating "Peri- Urban Identity", Silvassa
Authors	Saylee P. Shinde





PERFORMATIVE NATURE

Barcelona International Landscape Architecture Biennial

September 2018 **Barcelona**

SCHOOL PRIZE

X International Landscape Architecture Biennial

Máster d'Arquitectura del Paisatge -DUOT - UPC

ETSAB- Escola Tècnica Superior

d'Arquitectura de Barcelona

Avenida Diagonal, 649 piso 5

08028 Barcelona-Spain

TECHNICAL DOSSIER

Title of the project Creating "Peri- Urban Identity", Silvassa
Authors Saylee P. Shinde
Title of the course Landscape Studio 2
Academic year 2017-18
Teaching Staff Prof. Sandip Patil
Department/Section/Program of belonging Masters in Landscape Architecture, Faculty of Architecture
University/School CEPT University

Written statement, short description of the project in English, no more than 250 words

..... **Silvassa** is a town on the Daman Ganga River in western India, bordering the state of Gujarat. Formerly under Portuguese rule, it's known for its varied tribal heritage. The city has a large number of factories and industries providing significant government revenue due to which the landscape of Silvassa and surrounding region has altered dramatically in recent years. Due to rapid industrialization and fast paced development, public image of city Silvassa appears to be less engrossing and doesn't stimulate its rich traditional roots even being formerly known as a tribal village. Besides this the Tribal community is recognised around the world for its art (Warli Art), dance, festivals, however Silvassa, as a city misses to reflect this reality as a notable part of its culture and history.

..... The cultural landscape of Silvassa and the villages at the periphery of the city play a vital role in giving the city its present identity and is thus the evident connection between the rich culture of villages (tribes) and the development of city (migrants). Due to the pace of development, city's open spaces gradually form a character and represent its history. Hence **taking inspiration from the overall setting of Silvassa, the design proposal is developed in two parts (1) Designing character of public spaces and (2) formulating design guidelines with respect to modern street** **scape elements that represent Silvassa and its villages.** Together this shall contribute to create impressions, memories and attention of people, forming an "image of the city"

For further information

Máster d'Arquitectura del Paisatge -DUOT - UPC

T: + 34 93 401 64 11 / +34 93 552 0842

Contact via email at: biennial.paisatge@upc.edu

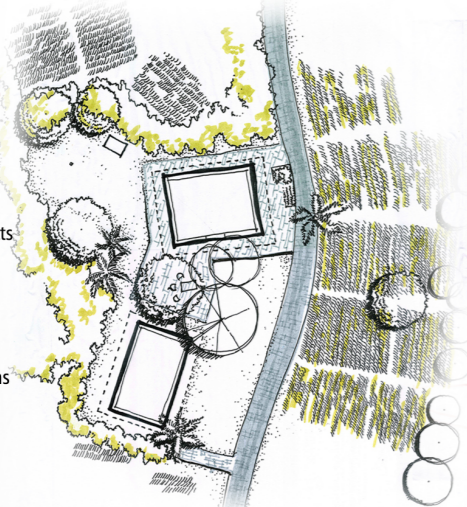
Consult the web page <http://landscape.coac.net/>

DEVELOPING THE CHARACTER OF PUBLIC SPACES

1: TWO HUTS AND SHARED SPACE

Spaces shared and demarcated by trees and plantation. Hierarchy of spaces in relation to a paved road that connects to the vehicular road of the village

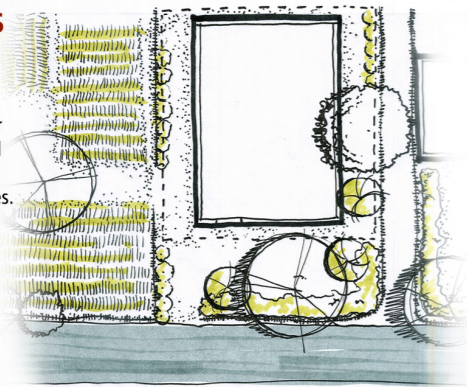
Two Warli tribe huts share a common space between their verandahs as a seating space shaded by trees



2: HUT AND ITS BOUNDARIES

Display of possession or property through partial screening by fences made from tree branches

Hierarchy from road-entrance- foyer-main entry-frontyard-farms



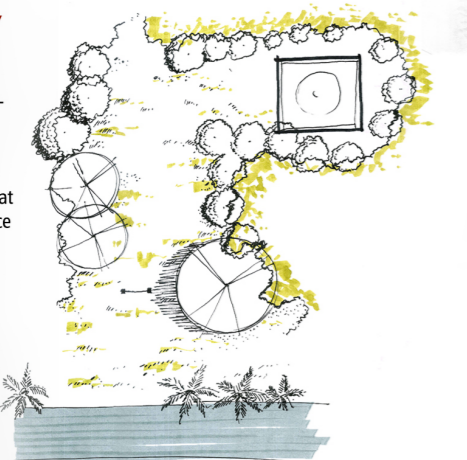
3: FRAME STRUCTURE HOUSE AND SPILL OUT SPACES

A framed structure- concrete building among mud houses showing Verandah of such a house with adjacent houses consisting of plantation property. Chicken Wire mesh fence instead of timber branched fence of traditional mud huts

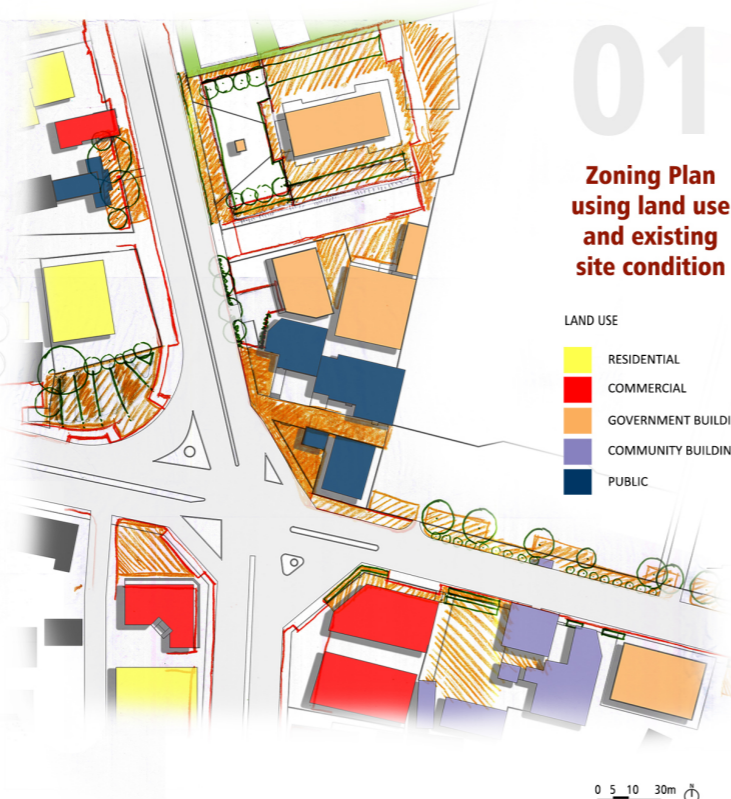


4. COMMUNITY SPACE

A community temple situated in a cove surrounded by farms and trees which is accessed through the gateway that holds cultural importance in the lives of tribal people



Houses and clusters in Tribal Village - Kherdi, Silvassa



Understanding the land use and zoning spaces according to the user groups

01

Zoning Plan using land use and existing site condition

- LAND USE
- RESIDENTIAL
 - COMMERCIAL
 - GOVERNMENT BUILDINGS
 - COMMUNITY BUILDINGS
 - PUBLIC

0 5 10 30m



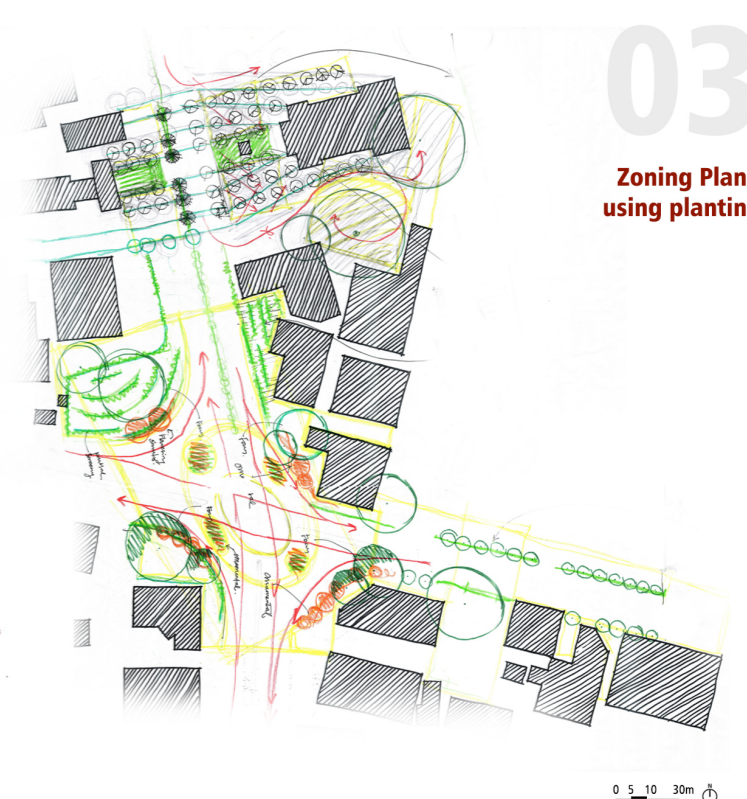
Opening public spaces to streets making the street vanish completely. For streets to act as open spaces they need to merge in with the buildings on the street itself, thus expanding the street area and allowing the building to go beyond compound walls. Spaces with same land use were combined to form a plaza. Traffic islands combine with corner land use building spaces to give an identity to the formally similar looking islands

02

Zoning Plan using land use and user groups

TRAFFIC ISLANDS COMBINED WITH CORNER LAND USE BUILDING SPACES

0 5 10 30m

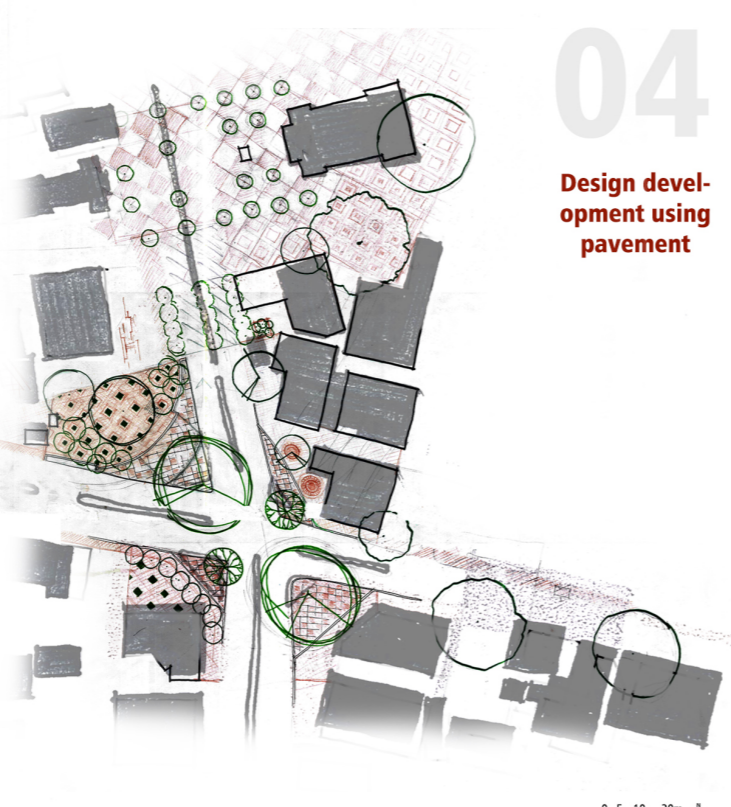


Designing to let plant characteristic define spaces. Existing trees used as focus to form new plazas. Plant with certain character, form, shape and branching pattern selected to give identities to spaces. The spacing and selection of plants determine few guidelines for the city of silvassa

03

Zoning Plan using planting

0 5 10 30m

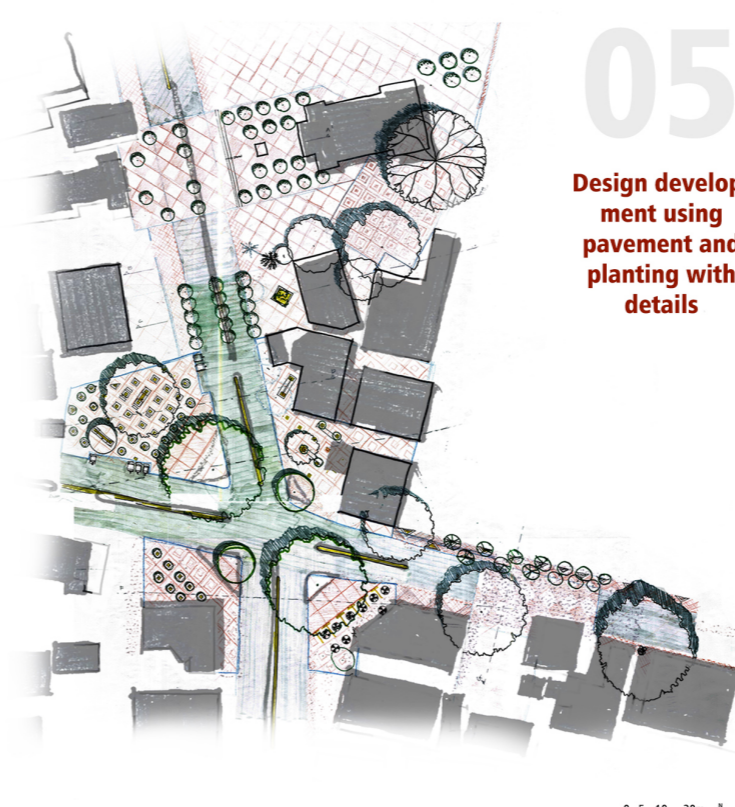


Detailing spaces with pavement with respect to scale of buildings in the vicinity

04

Design development using pavement

0 5 10 30m



Different pavers size and patterns explored to define the space. Details of pavers with motifs, seating and other elements are designed.

05

Design development using pavement and planting with details

0 5 10 30m



Proposed plan with finalised pavement, utility zones and other modern streetscape elements.

06

Proposed Plan

0 5 10 30m



DESIGN DETAILS INSPIRED FROM LARGER SETTING OF SILVASSA

Circle



These shapes are symbolic of elements of Nature. Association of shape circle with Moon and sun

Triangle



These shapes are symbolic of elements of Nature. Association of shape Triangle with mountains and trees

Square



These shapes are symbolic of human intervention. Association of shape square with enclosure or piece of land

Occupations



Toddy Collection

Beliefs



Banyan Tree Worship

Expressions

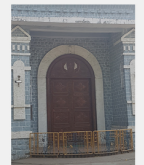


Warli painting

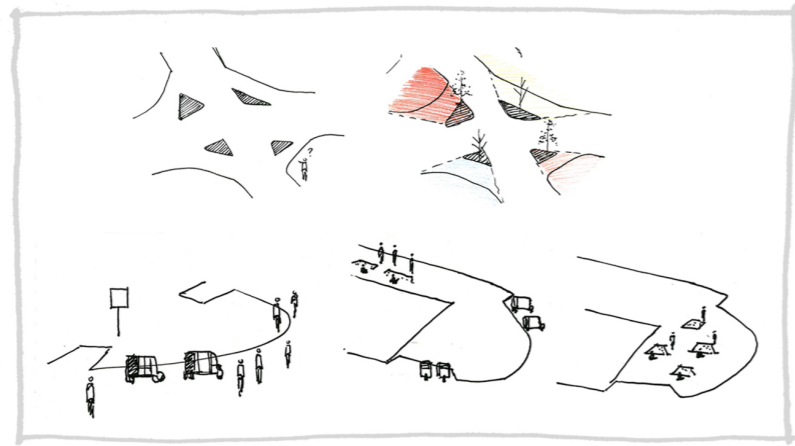
Materials, finishes and construction



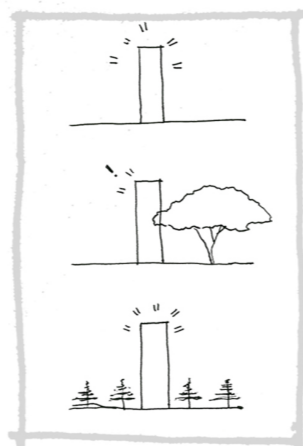
Use of materials, colors and arches from the Portuguese



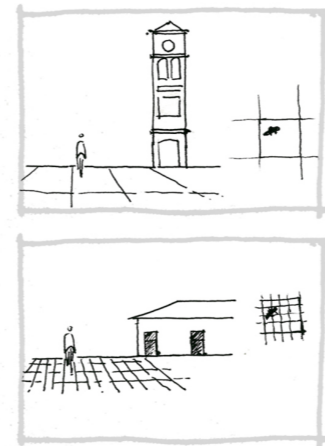
Source: Site Study and Social cultural aspect study by Richa



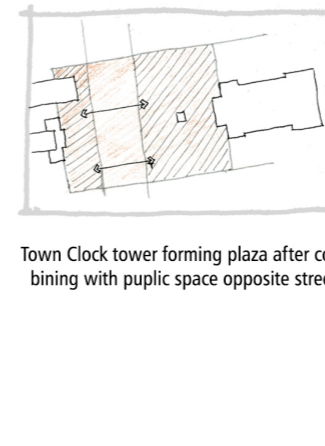
Identifying spaces designated for a function but not used to full potential. Providing better function



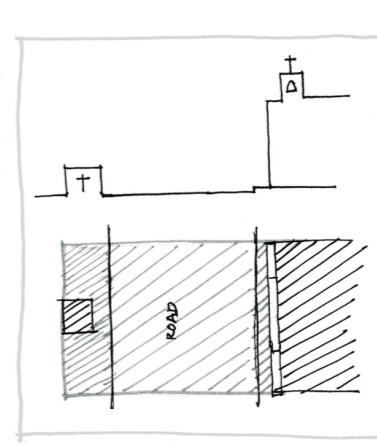
Monument and its combination with planting



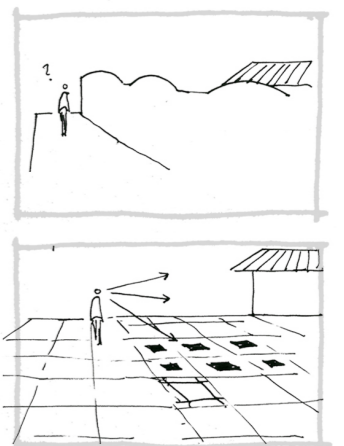
Monument and its combination with size of the pavers (top) and Scale of building influencing the size of paver blocks chosen



Town Clock tower forming plaza after combining with public space opposite street/

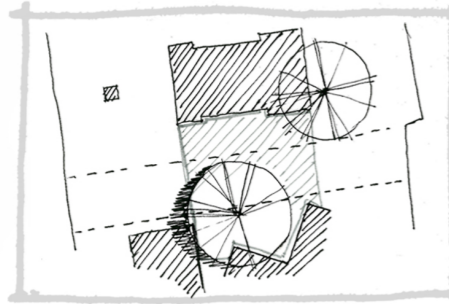


Community spaces joined with the help of existing built space on the opposite street



Motifs in the pavement in Tribal Art Museum Plaza

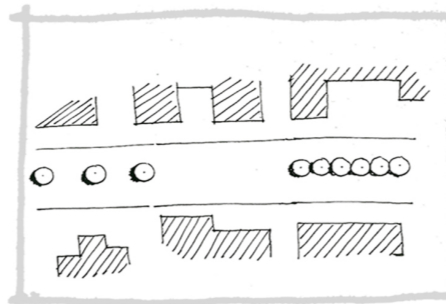
CONNECTIONS OF STREETS AND BUILDINGS



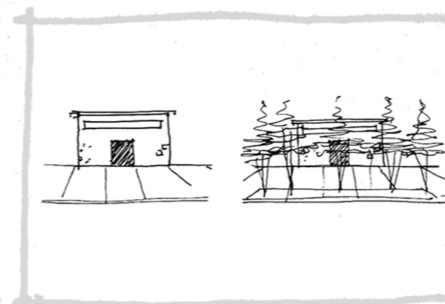
Town Hall Plaza formed with keeping existing tree in focus



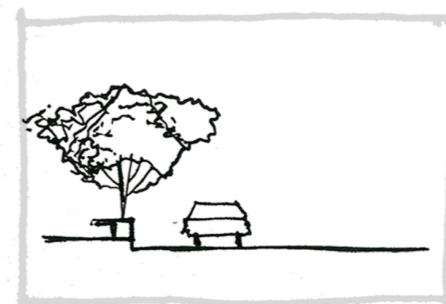
Easy visual and physical access to the Town Hall plaza



Planting used for visual barrier

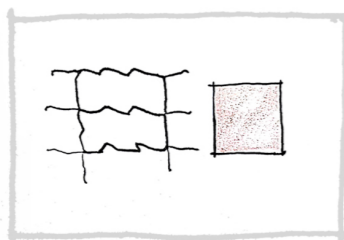


Vase Shaped form trees used in internal cities for car and bus clearance

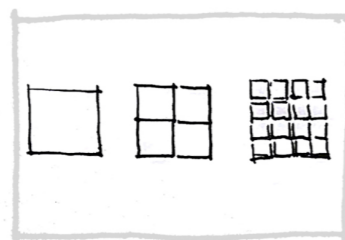


Keeping clearance towards public space at the back from the frontage (left)

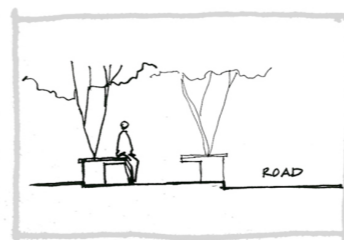
USING PLANTING DESIGN



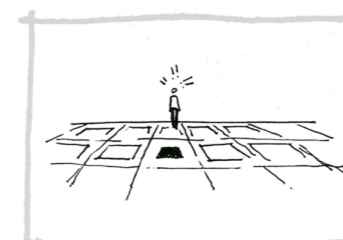
Questioning the element of modern streetscape - a paver block. The shape is alien to the traditional values of Silvassa



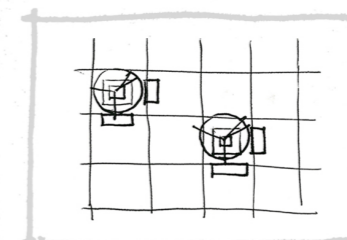
Seating under trees in Commercial spaces



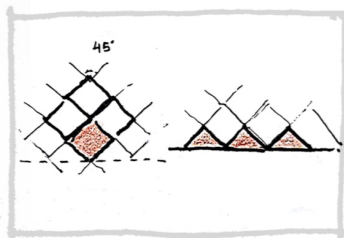
Seating under trees to view both sides



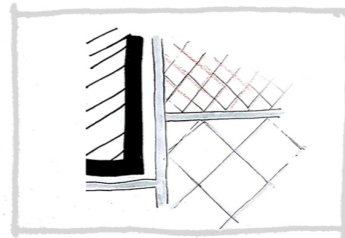
Tribal Art motif embedded in Pavement in Town Hall Plaza



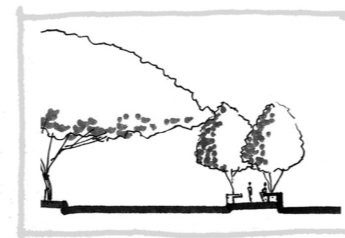
Grid used for seating along with planters in Market plaza, Commercial Courts and plazas



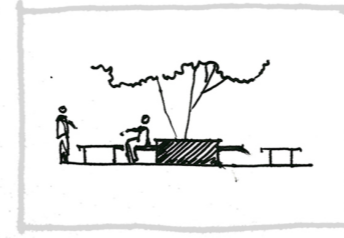
To achieve borders at end in triangles, the pavers can be placed in 45 degree angle



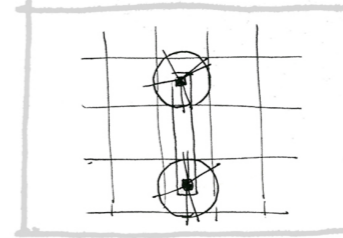
Conceptual diagram showing junction of two different angular pavers



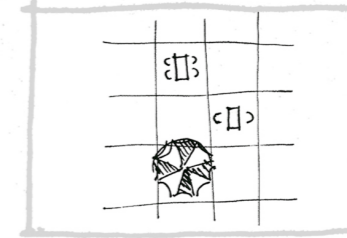
Seating under trees near recreational spaces



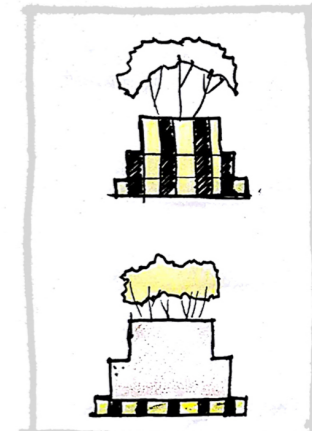
Iron Charpoy to sell goods in market designed with planter beds to accommodate seating space



Grid used for seating along with planters in Commercial Courts and plazas



Grid used for seating along with planters in Food Court and plazas



Medians in Silvassa (top) Medians proposed with a paint color instead of black yellow stripes over the entire median (bottom)

DESIGN DETAILS

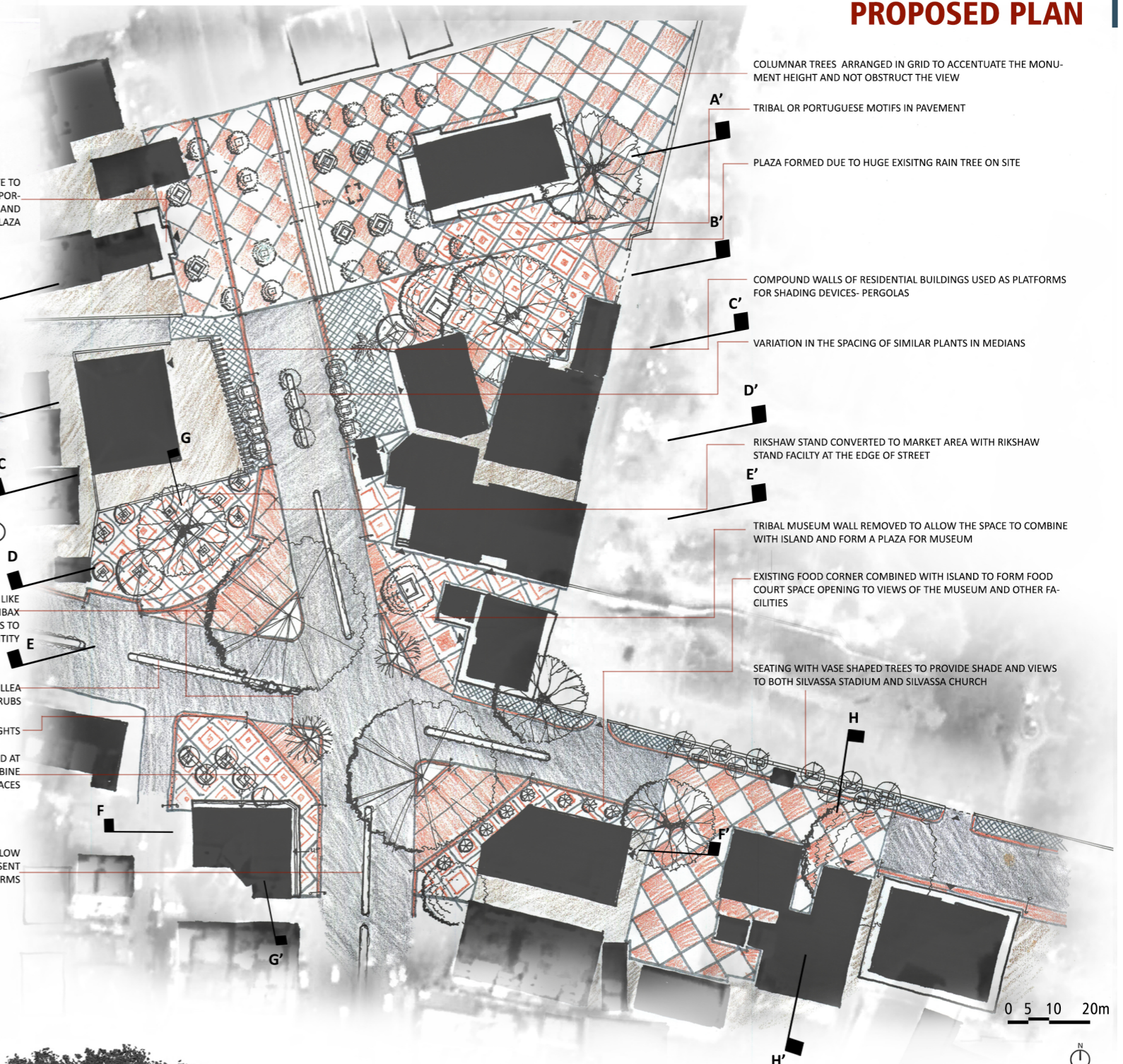
PROPOSED PLAN



Existing Plan



Proposed plan - Top view



KALA KENDRA OPPOSITE TO TOWN HALL GIVING OPPORTUNITY TO COMBINE AND FORM A PUBLIC PLAZA

COLUMNAR TREES ARRANGED IN GRID TO ACCENTUATE THE MONUMENT HEIGHT AND NOT OBSTRUCT THE VIEW
TRIBAL OR PORTUGUESE MOTIFS IN PAVEMENT

PLAZA FORMED DUE TO HUGE EXISTING RAIN TREE ON SITE

COMPOUND WALLS OF RESIDENTIAL BUILDINGS USED AS PLATFORMS FOR SHADING DEVICES- PERGOLAS

VARIATION IN THE SPACING OF SIMILAR PLANTS IN MEDIANS

RIKSHAW STAND CONVERTED TO MARKET AREA WITH RIKSHAW STAND FACILITY AT THE EDGE OF STREET

TRIBAL MUSEUM WALL REMOVED TO ALLOW THE SPACE TO COMBINE WITH ISLAND AND FORM A PLAZA FOR MUSEUM

EXISTING FOOD CORNER COMBINED WITH ISLAND TO FORM FOOD COURT SPACE OPENING TO VIEWS OF THE MUSEUM AND OTHER FACILITIES

SEATING WITH VASE SHAPED TREES TO PROVIDE SHADE AND VIEWS TO BOTH SILVASSA STADIUM AND SILVASSA CHURCH

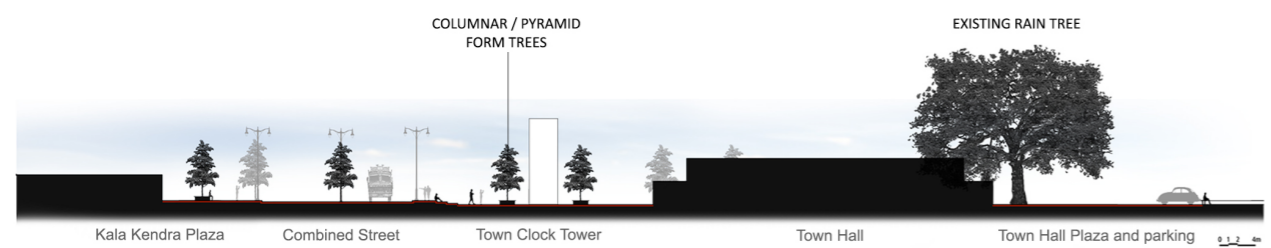
TREES OF ASSOCIATION LIKE RAIN TREE OR BOMBAX CEIBA ON THE ISLANDS TO GIVE IDENTITY

EXISTING BOUGAINVILLEA SHRUBS

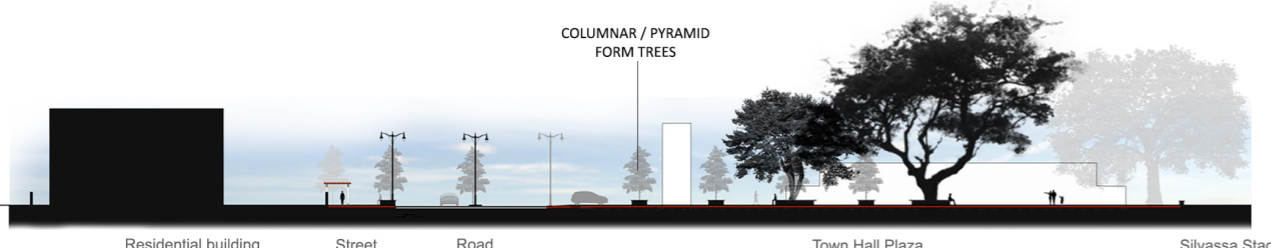
STREET LIGHTS

4 ISLANDS RAISED AT 300MM HT TO COMBINE WITH THE CORNER SPACES

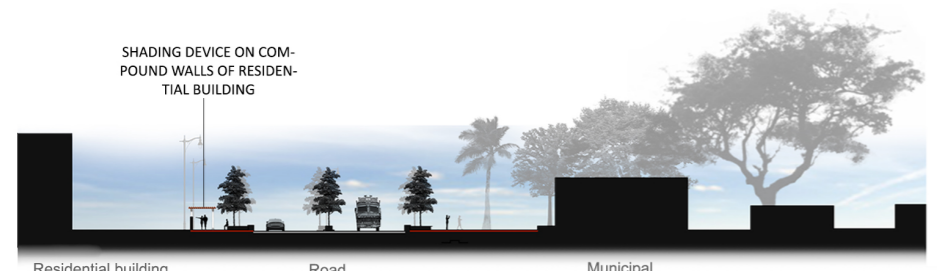
SHRUBS WITH YELLOW FLOWERS TO REPRESENT SANAI FRMS



Section AA'



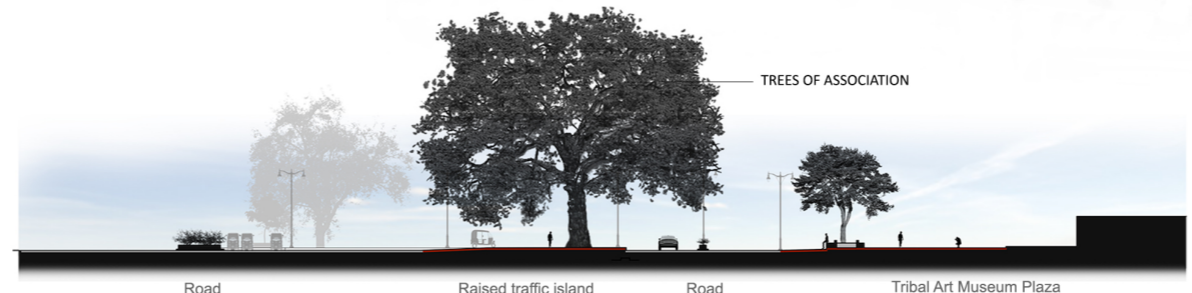
Section BB'



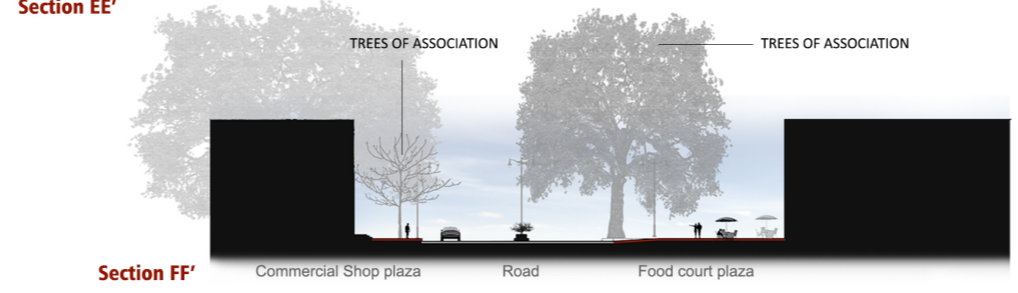
Section CC'



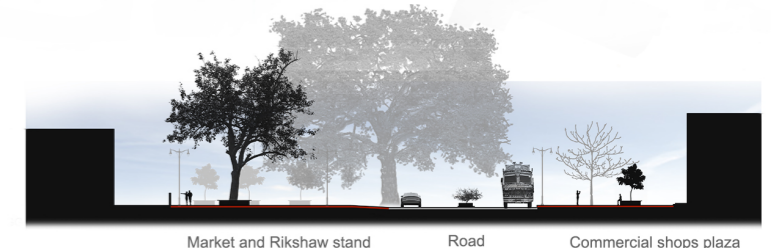
Section DD'



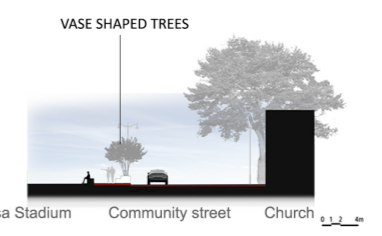
Section EE'



Section FF'



Section GG'



Section HH'

