

Memories of Water

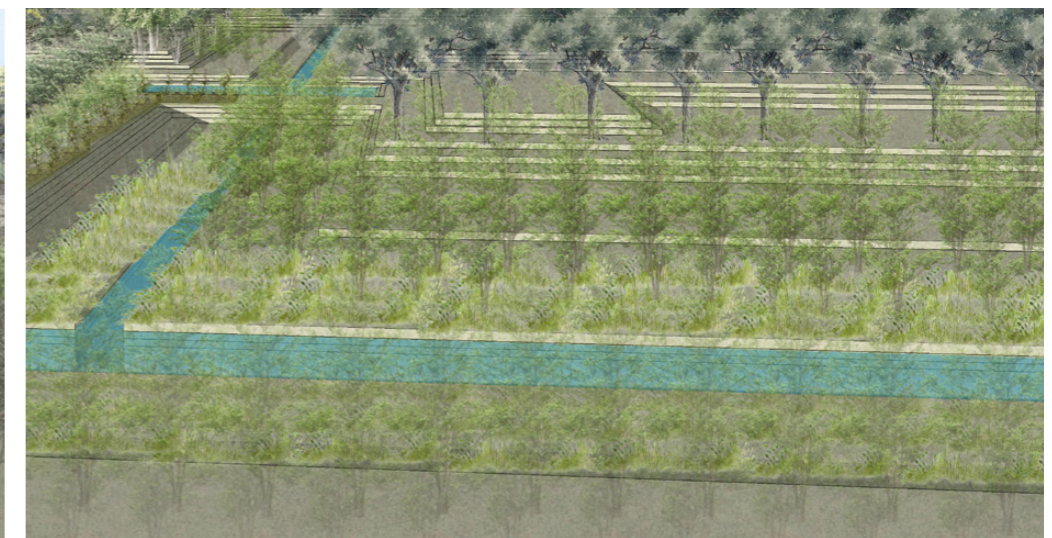
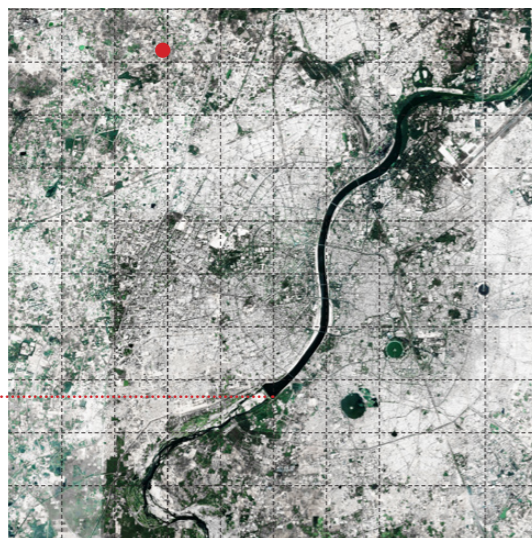
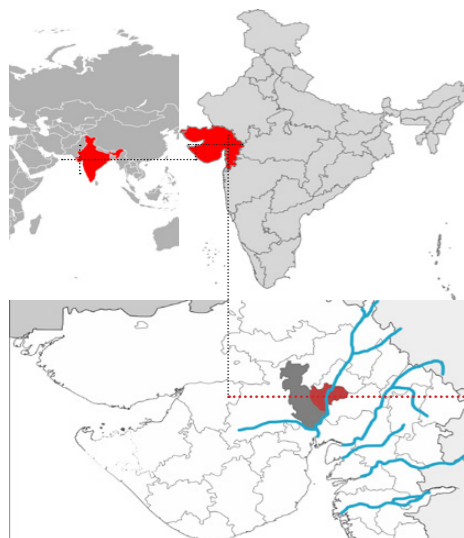
Water
monsoon - filled - saturated



Vegetation
winter - green - ephemeral



Ground
summer - brown - dry



Ahmedabad city - Rainfall 800 mm - Maximum temperature 45° C

Country / City India

University / School CEPT University

Academic year 2016-17

Title of the project Memories of Water

Authors Sneha Ramani





PERFORMATIVE NATURE

Barcelona International Landscape Architecture Biennial

September 2018 **Barcelona**

SCHOOL PRIZE

X International Landscape Architecture Biennial

Máster d'Arquitectura del Paisatge -DUOT - UPC

ETSAB- Escola Tècnica Superior

d'Arquitectura de Barcelona

Avenida Diagonal, 649 piso 5

08028 Barcelona-Spain

TECHNICAL DOSSIER

Title of the project Memories of Water
Authors Sneha Ramani
Title of the course Landscape Studio 1
Academic year 2016-17
Teaching Staff Anjali Jain, Divya Shah, Omkar Shete, Priyal Shah, Beena Tindwani
Department/Section/Program of belonging Masters in Landscape Architecture, Faculty of Architecture
University/School CEPT University

Written statement, short description of the project in English, no more than 250 words

Landscapes can be identified as relationships between landforms and water; each shaping the other. More so, in a semi arid climate, where water is ephemeral - abundant in the monsoon and gradually disappearing, to almost without a trace in peak summer. The water as it fades away also modifies the green (vegetation) – from a deep saturated green in the rains transforming to a brown in summer - this dynamic character gives new meanings and experiences to the place as one starts establishing relationships between the constants and the ever changing. Ahmedabad is one such city in a hot, semi arid climate (max temp 45 deg c, min 8 deg c.) – its setting coming alive with the rains (avg annual rainfall 800 mm over 40 rain days). The site for the project is located on the outskirts of this vast flatland where even a minor depression in the ground can transform the landscape. The projects seeks to reveal this embedded dynamic and performative quality of the setting by bringing out the ever-changing relationship of the land and water, by shaping the ground that retains some memory of the water that has gone, but will also return.

For further information

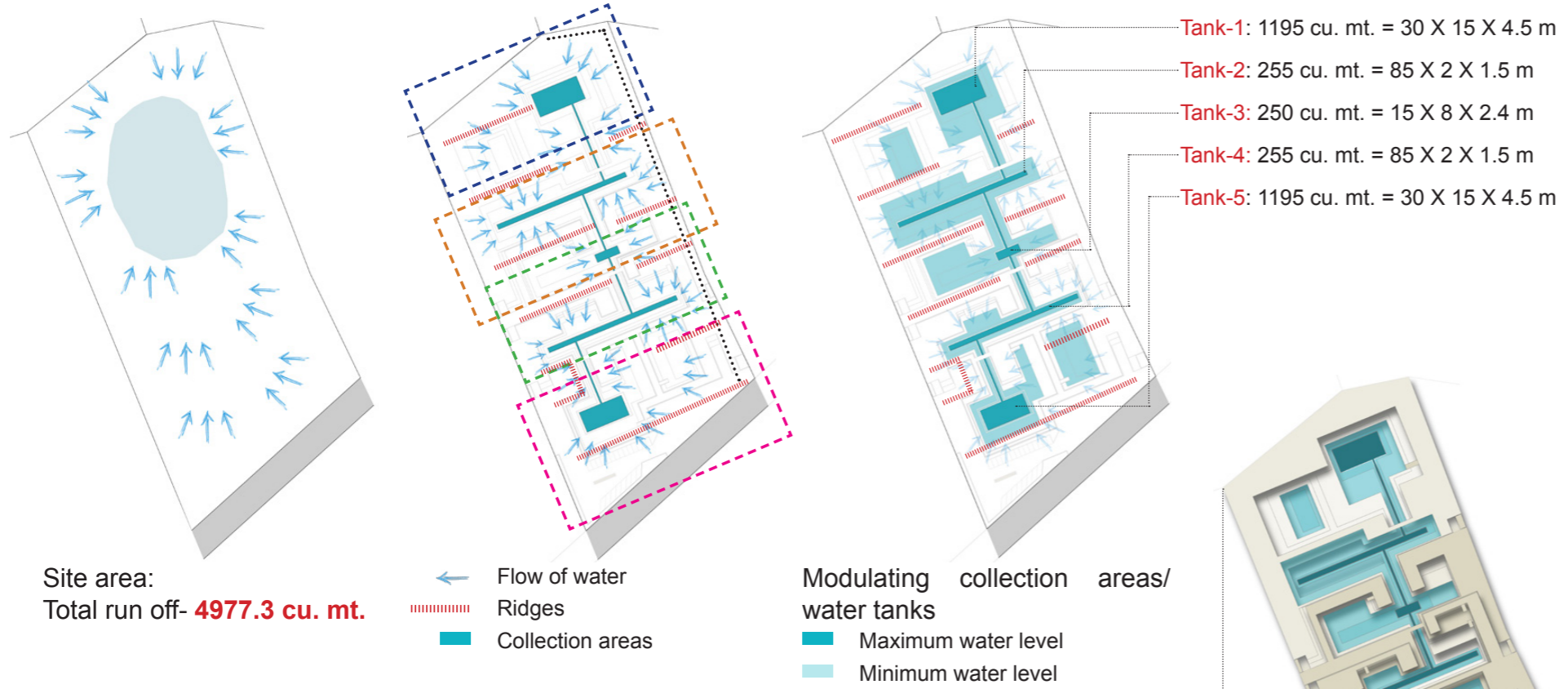
Máster d'Arquitectura del Paisatge -DUOT - UPC

T: + 34 93 401 64 11 / +34 93 552 0842

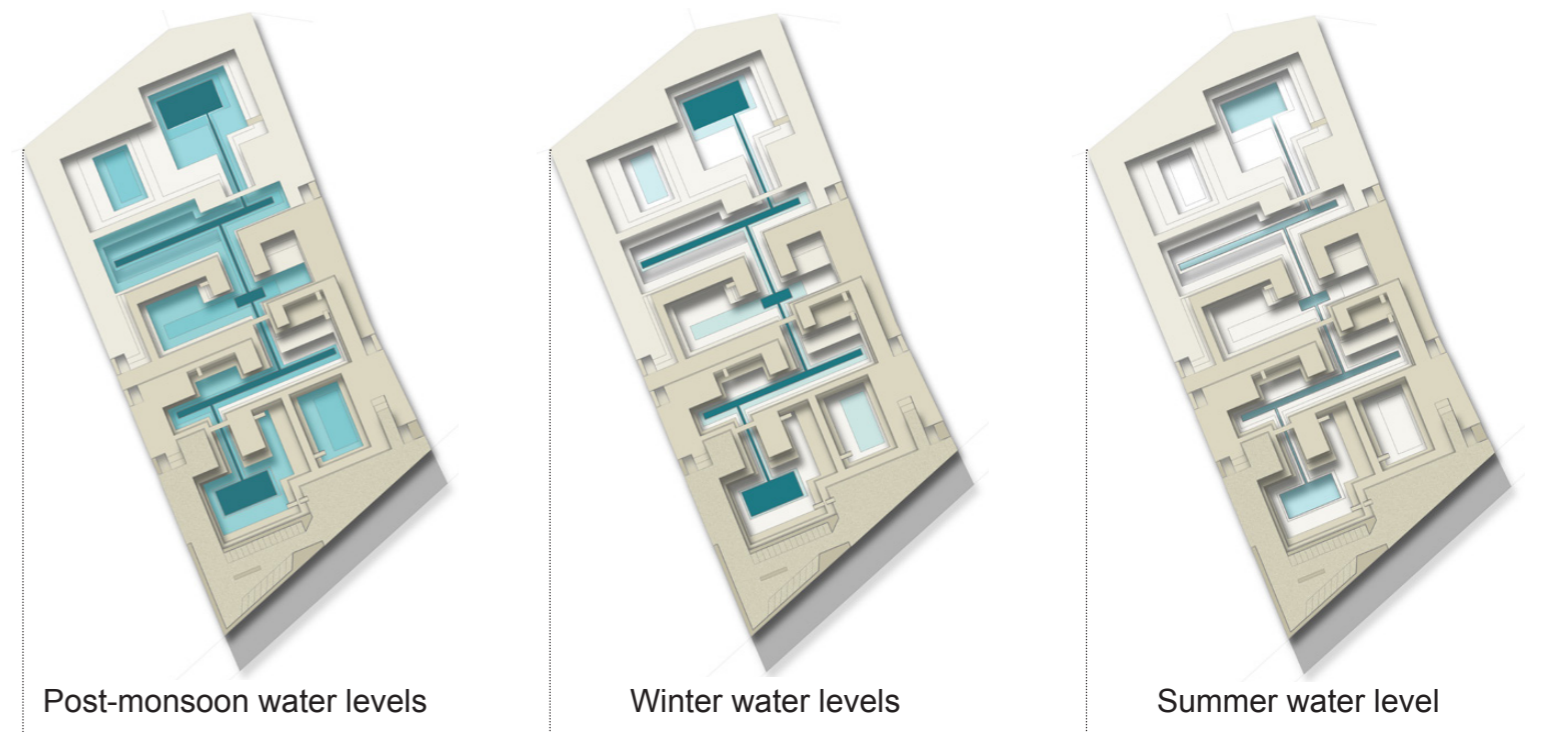
Contact via email at: biennial.paisatge@upc.edu

Consult the web page <http://landscape.coac.net/>

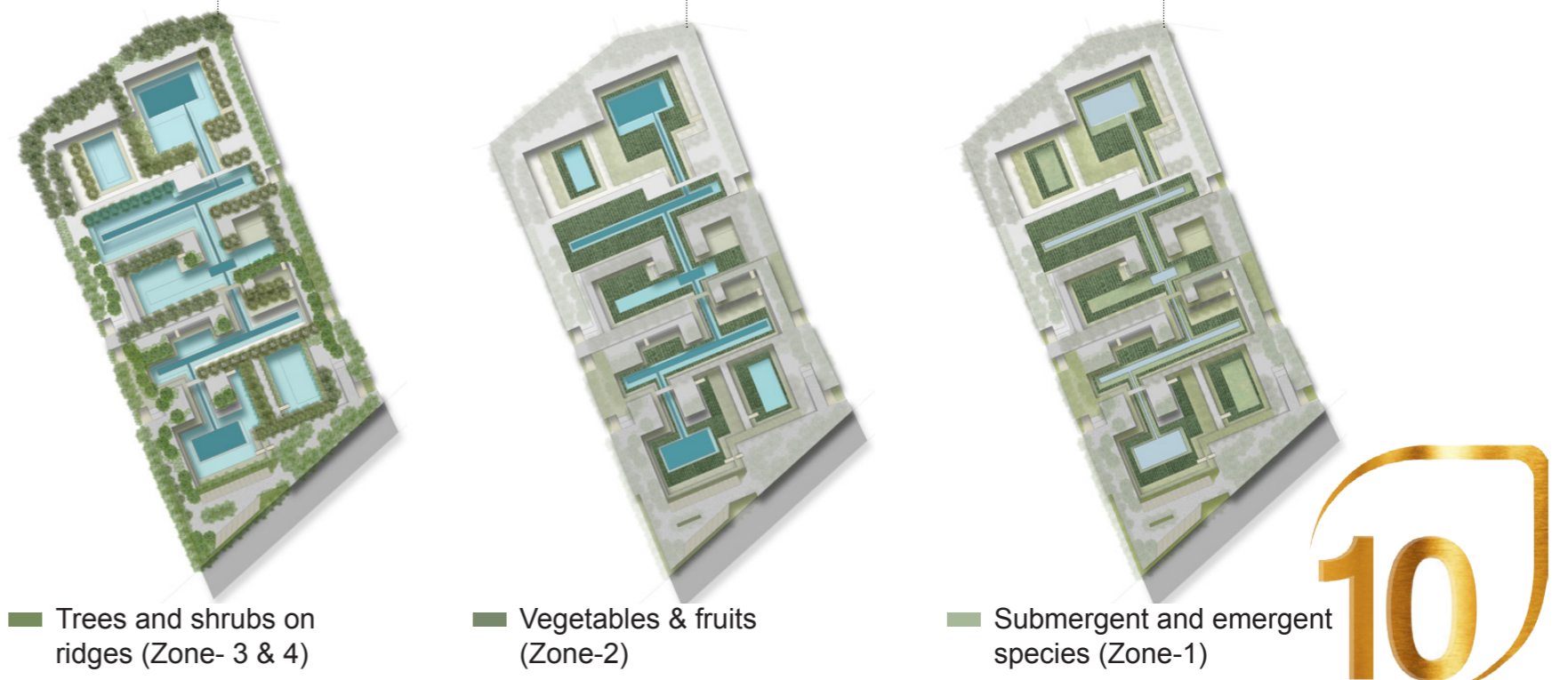
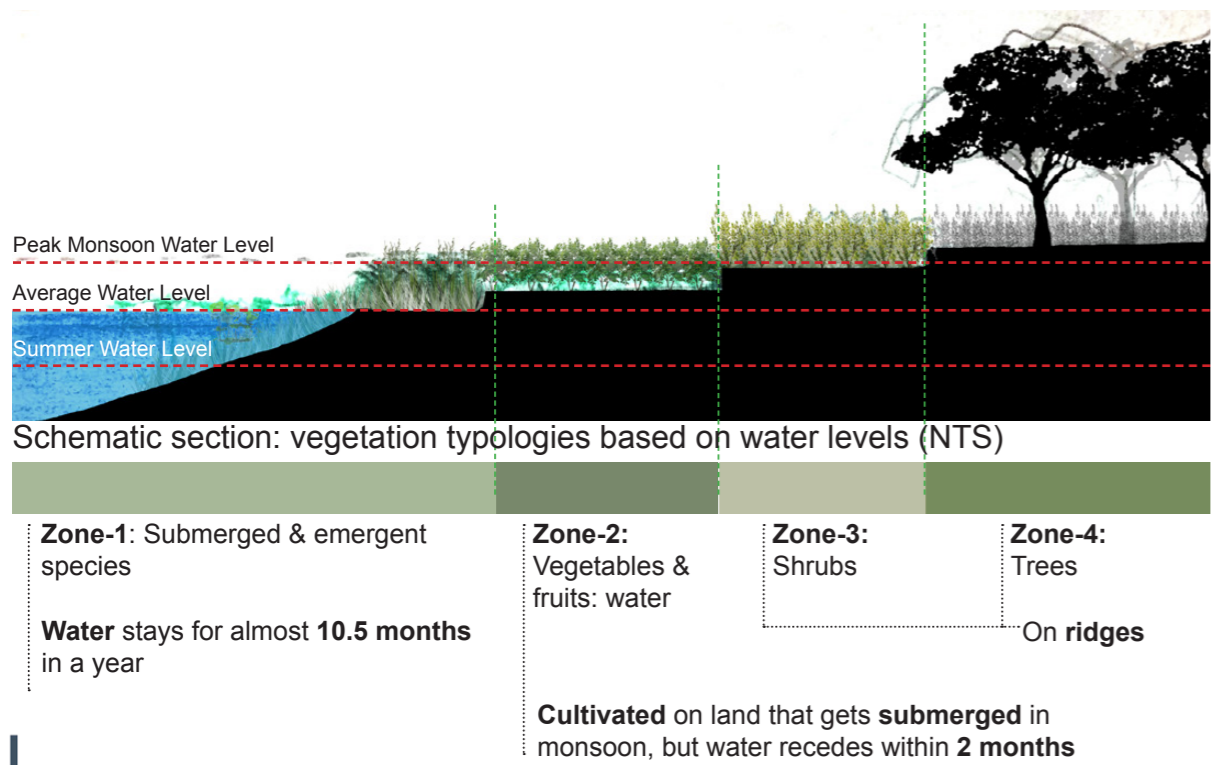
1. Strategy: water distribution

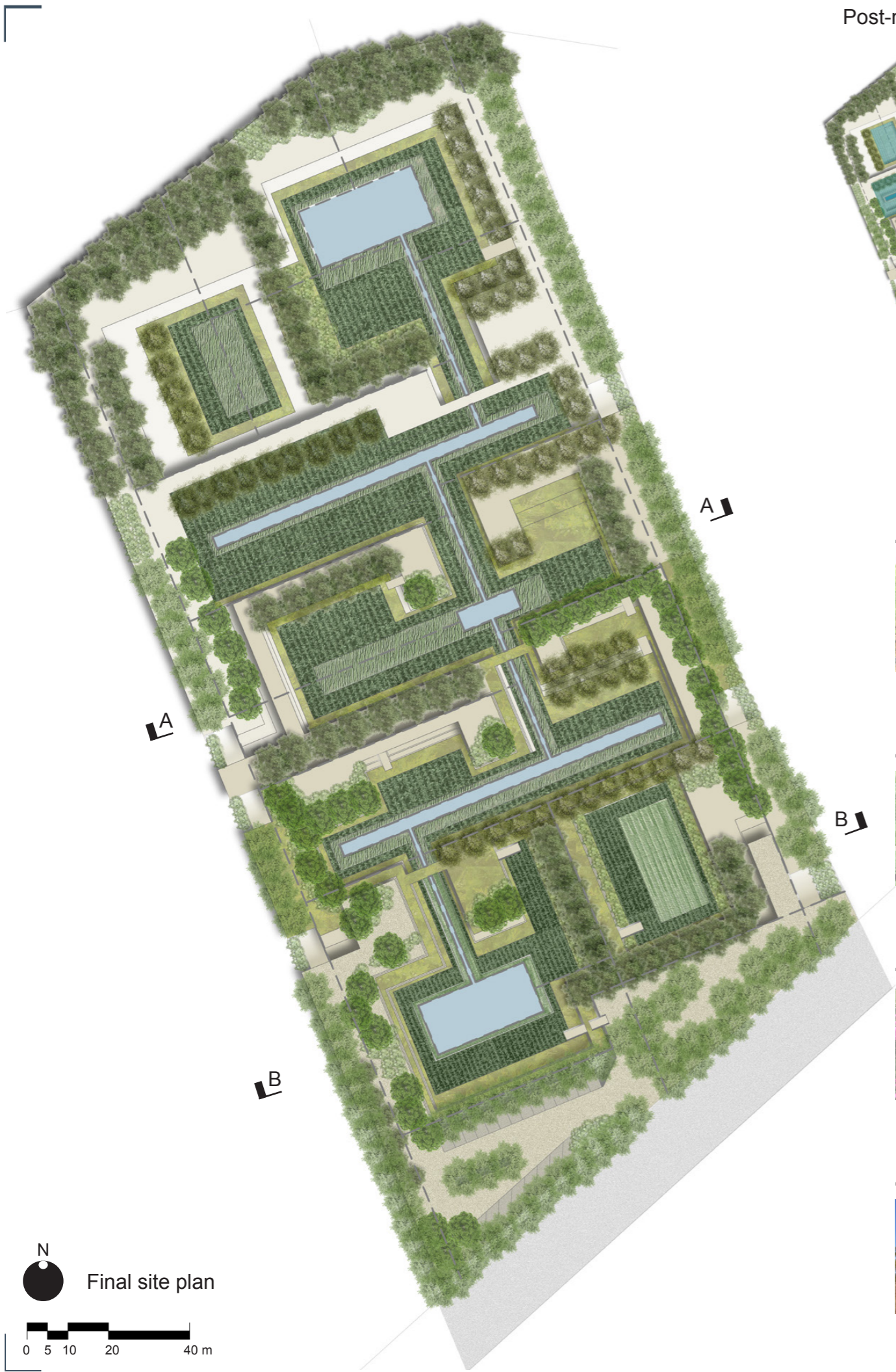


2. Strategy: Ground modulation and water levels

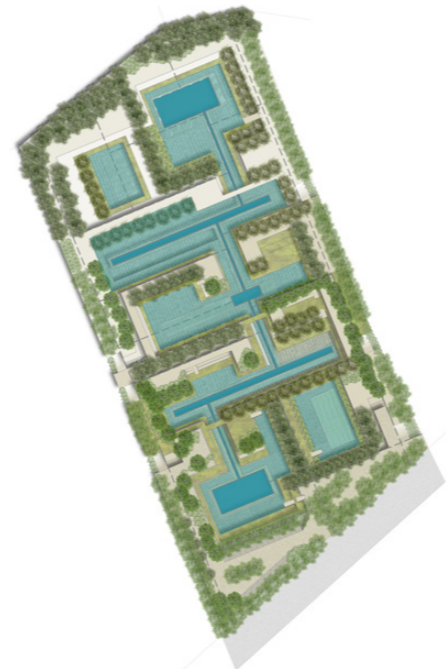


3. Strategy: Water levels and vegetation

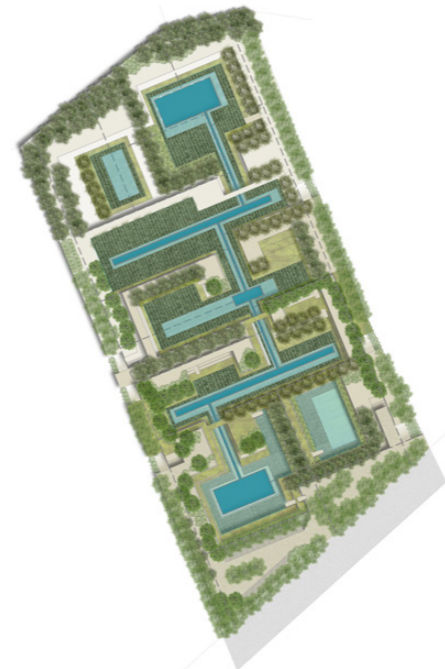




Post-monsoon vegetation



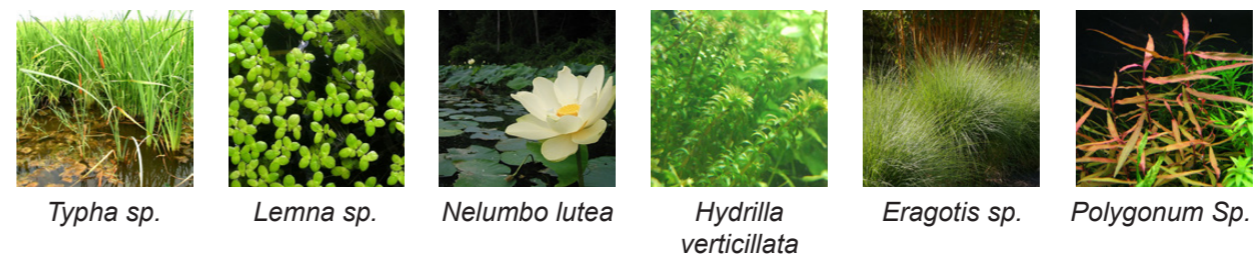
Winter vegetation



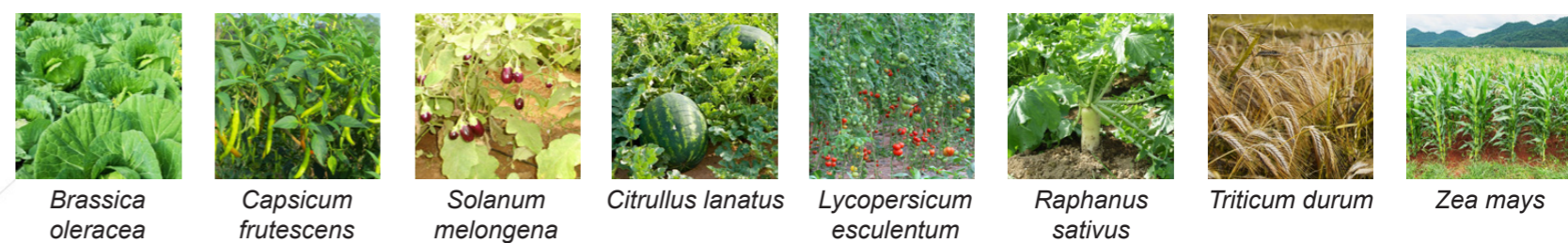
Summer vegetation



Zone-1: Emergent or submerged species



Zone-2: Vegetables & fruit

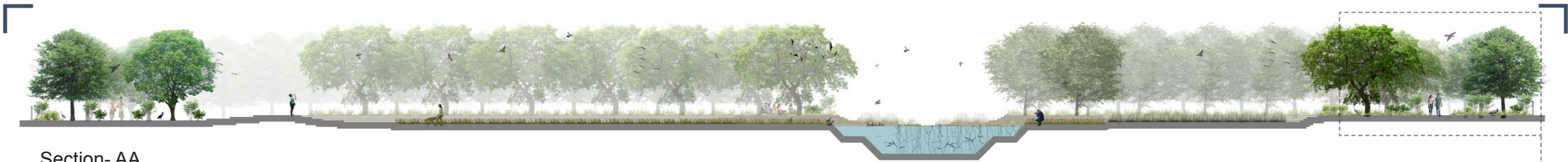


Zone-3: Shrubs



Zone-4: Trees





Section- AA

The water collects in the tanks during the rains and gradually recedes - slowly in the winter and then really fast in the summer - revealing new layers of landscape creating an ever changing experience of the setting



Section- BB

