

Country / City .....

University / School .....

Academic year .....

Title of the project .....

Authors .....

Spain .....

San Pablo CEU University .....

2016-2017 .....

Myuush Cosmos University\_ Architecture and Landscaping School .....

Carmen Ramos González .....





# PERFORMATIVE NATURE

Barcelona International Landscape Architecture Biennial

September 2018 **Barcelona**

SCHOOL PRIZE

X International Landscape Architecture Biennial

Máster d'Arquitectura del Paisatge -DUOT - UPC

ETSAB- Escola Tècnica Superior

d'Arquitectura de Barcelona

Avenida Diagonal, 649 piso 5

08028 Barcelona-Spain

## TECHNICAL DOSSIER

Title of the project Myuush University\_ Architecture and Lanscaping School in Makeni, Sierra Leone, Africa.  
Authors Carmen Ramos González  
Title of the course PFC (Final Project Tesis)  
Academic year 2016-2017  
Teaching Staff M<sup>a</sup> Auxiliadora Pérez Gálvez \_Mariano Molina Iniesta\_ Ivan González Truco  
Department/Section/Program of belonging PFC.(Final Project Tesis)  
University/School San Pablo CEU University

Written statement, short description of the project in English, no more than 250 words

Africa, distant strokes of the Cosmos find their place on the vernacular land . The unifying trajectories of the human and the divine design its life, architecture and landscape.

However, the art of aforetime fades away, between corruption and poverty.

Hence, the project seeks to: Recover the original sense of architecture and to live the daily routine in the landscape experience, solving the problems of the land (salubrity, habitability and a humid tropical climate); Modernize their traditional methods, utilising local materials, and gaining their acceptance from constructive and structural technification; Involve the population in the whole process.

The landscape is designed according to the force lines generated by the land's drainage network, which channels water for consumption and energy supply, the heartlands (buildings and squares) and the pathways. All these lines create natural banks of autochthonous and productive vegetation, which serve the constructive, aromatic (insect repellent), medicinal and food needs. All, following a game of sensations and perspectives, of lights and shadows, of colours and scents.

Meanwhile, high solar chimneys ventilation, appreciated and diffused between the trees, produce air flows that avoid the heat. They are, at the same time, social gathering yards and viewpoints to observe the heavens and the earth. From them descends a huge mantle, under which the sacred laws of nature shape a form-finding structure, making human construction natural, rather than artificial. The city as an ecological system that welcomes the whole community, where air, light and inhabitants flow through the twisting spine of slopes sculpted in the muddy topography.

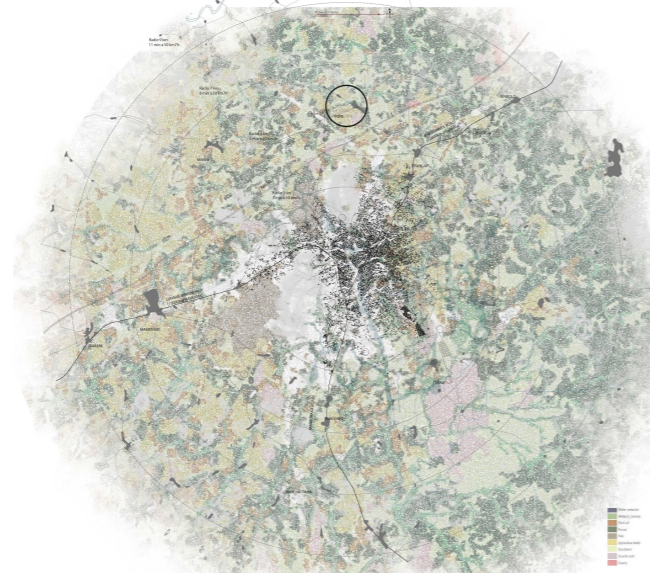
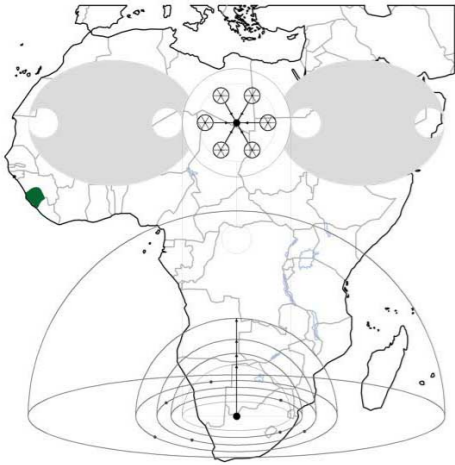
For further information

**Máster d'Arquitectura del Paisatge -DUOT - UPC**

T: + 34 93 401 64 11 / +34 93 552 0842

Contact via email at: [biennial.paisatge@upc.edu](mailto:biennial.paisatge@upc.edu)

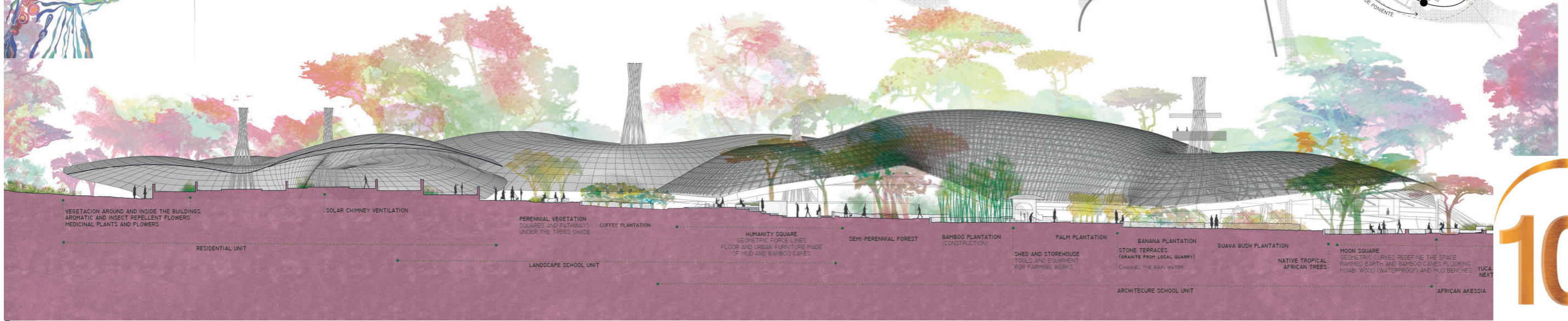
Consult the web page <http://landscape.coac.net/>



COSMOLOGY AND RITUALS DIAGRAM SQUARES AND ARCHITECTURE



LIVING IN THE RITUALS OF THE DAILY ROUTINE, IN THE CYCLE OF EVERYDAY LIFE: IN THE DETAILS, THE WORDS, THE NOODS  
 LEAVING BEHIND THE ABUSIVE PRACTICES AND INEQUALITY.  
 LETTING GO OF THE PAST, PUTTING ASIDE THE CARNAGE OF THE PRIMITIVE TO MOVE TOWARDS THE FUTURE  
 HAND IN HAND WITH SYMBOLIC TRADITION AND ROOTS IMPRINTED IN THE ARCHITECTURE AND THE LANDSCAPE.



- VEGETATION AROUND AND INSIDE THE BUILDINGS  
AROMATIC AND INSECT REPELLENT FLOWERS  
MEDICINAL PLANTS AND FLOWERS
- SOLAR CHIMNEY VENTILATION
- PERENNIAL VEGETATION  
SOURCES AND PATHWAYS  
UNDER THE TREES SHADE
- COFFEE PLANTATION
- HUMANITY SQUARE  
GEOMETRIC FORCE LINES  
FLOOR AND URBAN FURNITURE MADE  
OF MUD AND BAMBOO CANES
- SEMI-PERENNIAL FOREST
- BAMBOO PLANTATION  
(CONSTRUCTION)
- PALM PLANTATION
- SHED AND STOREHOUSE  
TOOLS AND EQUIPMENT  
FOR FARMING WORKS
- BANANA PLANTATION  
STONE TERRACES  
(GRANITE FROM LOCAL QUARRY)  
CHANNEL THE RAIN WATER
- GUAVA BUSH PLANTATION
- NATIVE TROPICAL  
AFRICAN TREES
- MOON SQUARE  
GEOMETRIC CURVES REDEFINE THE SPACE  
RAMMED EARTH AND BAMBOO CANES FLOORING  
HONEY WOOD (WATERPROOF) AND MUD BENCHES
- YUCA  
NEXT
- AFRICAN AKESSIA

ANANSI'S NET  
WOVEN LANDSCAPES

SIMBOLOGY AND NATURE

SELECTION OF NATIVE SPECIES FOR THE LANDSCAPE DESIGN  
- CONSTRUCTIVE, AROMATIC, MEDICINAL AND FOOD NEEDS  
- RESIDENTS MAINTENANCE  
- SELLING FOR SELF-FINANCING

FLOWER PLANTS

- Adenium Obesum
- Asclepias Curassavica
- Aspilia africana
- Bidens Steppia
- Dichorisandra Thyrsiflora
- Eichhornia Crassipes
- Hibiscus Sabdariffa
- Senecio Purpureus
- Trichodesma Ambacense
- Eichhornia Crassipes

AROMATIC FLOWERS  
INSECTS REPELLENT

FLOWER BUSHES

- Abutilon Angulatum
- Allamanda Cathartica
- Clitorea Ternatea
- Encephalartos Barteri
- Erythrina Senegalensis
- Ixora Coccinea
- Thunbergia Erecta

MEDICINAL PLANTS  
AROMATIC FLOWERS  
INSECTS REPELLENT

DRY FARMING

- MUJO - Pennisetum Glaucum
- CACAHUETE - Arachis Hypogaea
- MAIZ - Zea mays
- ALGODON - Gossypium hirsutum

IRRIGATION CROPS

- ARROZ - Oryza Sativa
- MANDIOCA - Manihot Esculenta
- PIÑA - Ananas Comosus

FRUIT TREES

- CACAO - Theobroma cacao
- CAFE - Coffea canephora
- PLATANO - Musa balbisiana
- PALMA AFRICANA - Elaeis guineensis
- GUANABANO - Annona muricata
- PROTA - Bersama abyssinica
- MANGO - Mangifera indica
- AKESIA AFRICANA - Blighia sapida

PLANTS (CONSTRUCTION+CLOTHES)

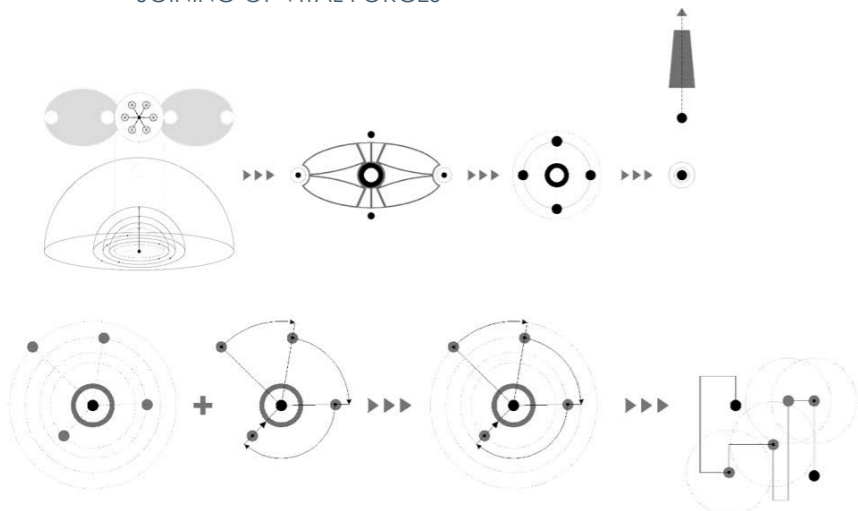
- PALMA - Raphia taedigera
- COCOTERO - Cocos nucifera
- LINO - Linum usitatissimum
- ALGODON - Gossypium hirsutum
- BAMBU - Guadua Agustifolia Kunth

NATIVE TROPICAL FOREST

- CAOBA - Khaya
- TECA - Tectona grandis
- IROKO - Milicia excelsa
- ACACIA - Acacia nigrescen
- ACACIA - Cassia sieberiana
- CEURO - Cedrus atlantica
- BRIDELIA - Bridelia bridelifolia
- GNETO - Gnetum africanum
- ABEDUL - Anogeissus leiocarpa
- BRIDELIA - Bridelia bromelifolia
- FLAMBOYAN - Delonix regia
- MADRIAGO - Gliciridia sepium
- HIGUERA AFRICANA - Ficus cyathistipula

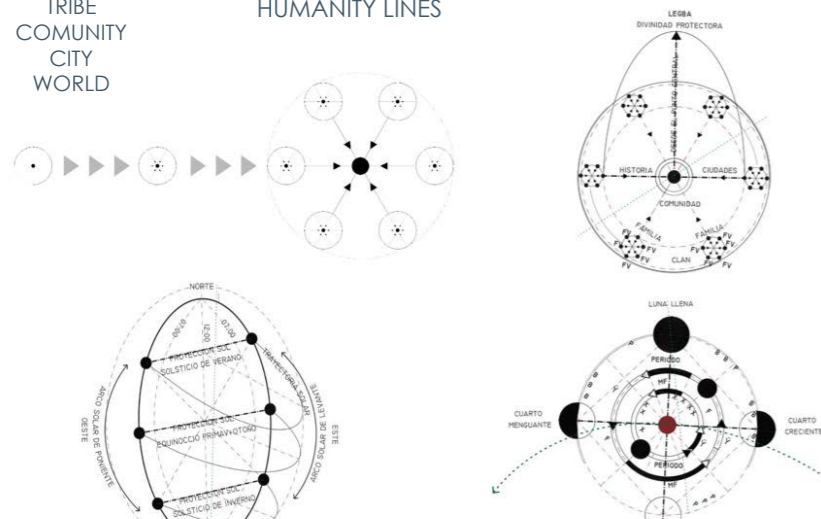


JOINING OF VITAL FORCES

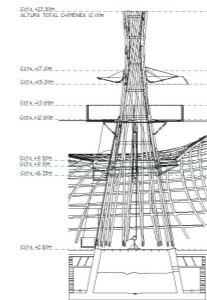
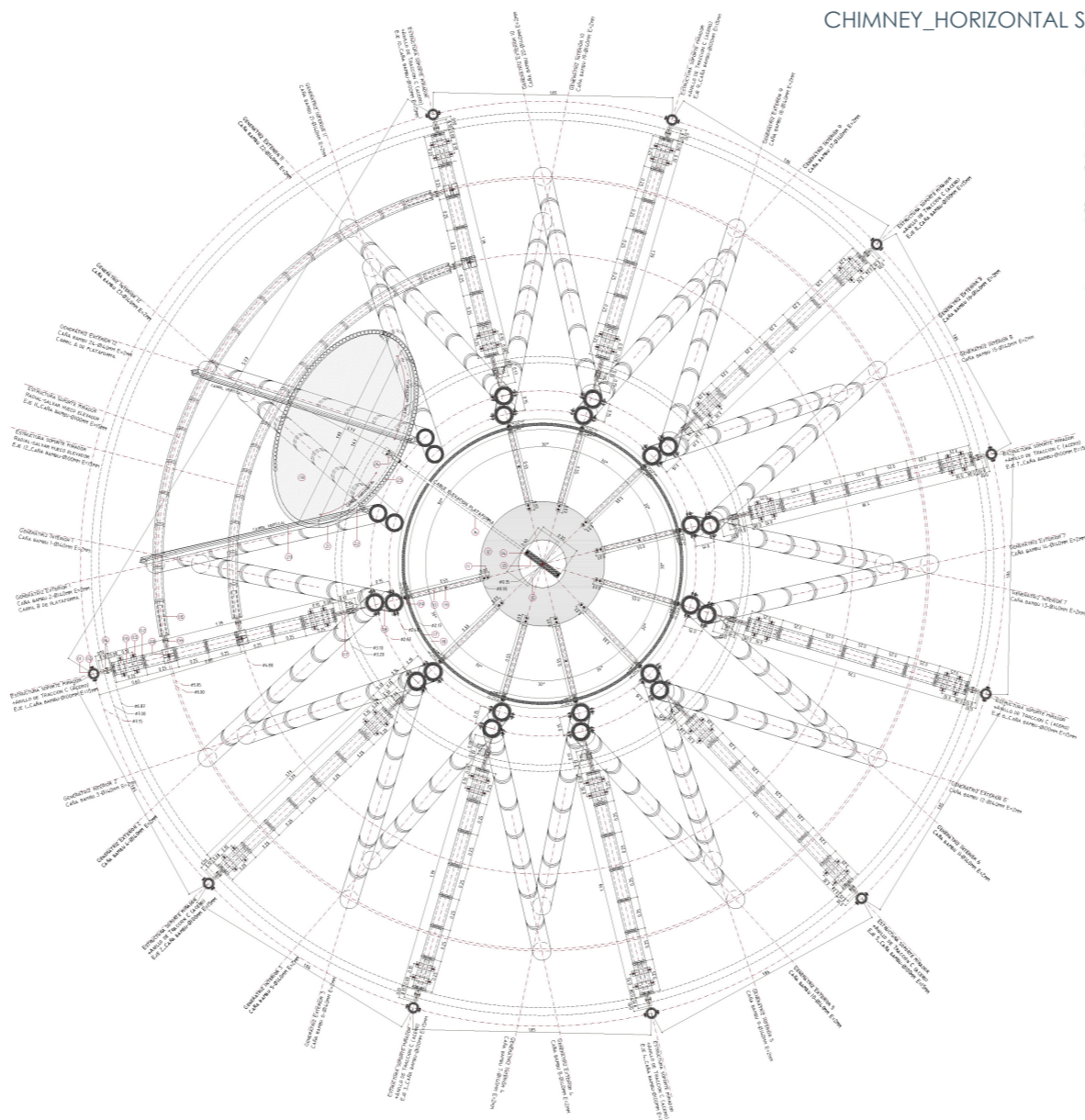


VITAL FORCE  
FAMILY  
TRIBE  
COMMUNITY  
CITY  
WORLD

COSMOS DESIGN  
HUMANITY LINES



CHIMNEY\_HORIZONTAL SECTION



LOCAL MATERIALS

- BAMBOO CANES AND RAMMED EARTH FLOORING
- MUD WALLS
- BAMBOO PILLARS AND BEAMS
- BAMBOO CHIMNEY STRUCTURE
- WOOD ROOF STRUCTURE
- BAMBOO LATICEWORKE ROOF
- PALM WEAVES FOR WALL'S SURFACES FINISH
- COCONUT FIBRE PANEL FOR ISOLATION
- TRADITIONAL COAL PAINTING WALLS

BAMBOO STRUTURE DETAILS

