



CHILE, SANTIAGO
UNIVERSIDAD CENTRAL, LANDSCAPE ARCHITECTURE
2017-2018
LANDSCAPE TERRITORIAL PLANNING, CHAÑARAL DE ACEITUNO
ESTEFANÍA CARRERA





PERFORMATIVE NATURE

Barcelona International Landscape Architecture Biennial

September 2018 **Barcelona**

SCHOOL PRIZE

X International Landscape Architecture Biennial

Máster d'Arquitectura del Paisatge -DUOT - UPC
ETSAB- Escola Tècnica Superior
d'Arquitectura de Barcelona
Avenida Diagonal, 649 piso 5
08028 Barcelona-Spain

TECHNICAL DOSSIER

Title of the project *Landscape territorial planning of Chañaral de Aceituno*

Authors *Estefanía Carrera*

Title of the course *Final project to obtain the title of Landscape Architect*

Academic year *2017-2018*

Teaching Staff *Miguel García Corrales*

Department/Section/Program of belonging *Landscape Architecture School*

University/School *Universidad Central de Chile*

Written statement, short description of the project in English, no more than 250 words

The case of study is a little southern coastal village in the Atacama Region, in Chile, called Chañaral de Aceituno. Here elements that contribute to the uniqueness of its landscape are gathered, which are the high diversity of native flora of the Atacama Desert, its location in front of an island inhabited by a large colony of humboldt penguins, and the summer sighting of large marine mammals. Its important to highlight the simplicity of the village, with fishing productivity as the main economic income. The last decade there has been an increase in national and international interest related to the whale watching in the place, which has caused an exponential growth of the tourist offer of the village. The foregoing, without previous planning, negatively impacts the territory, which is why a baseline analysis is needed to zonify the human uses of the landscape.

For further information

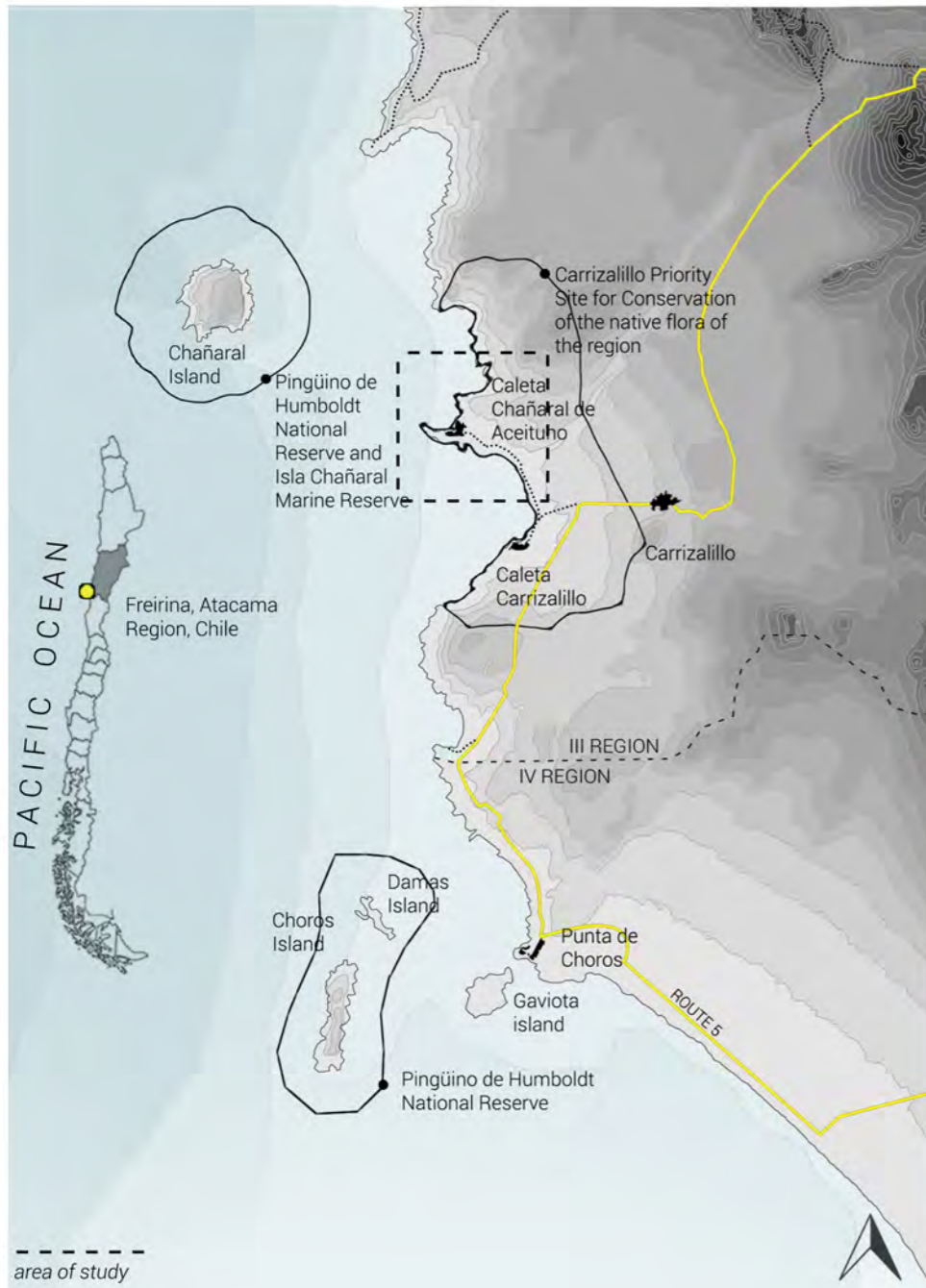
Máster d'Arquitectura del Paisatge -DUOT - UPC

T: + 34 93 401 64 11 / +34 93 552 0842

Contact via email at: biennal.paisatge@upc.edu

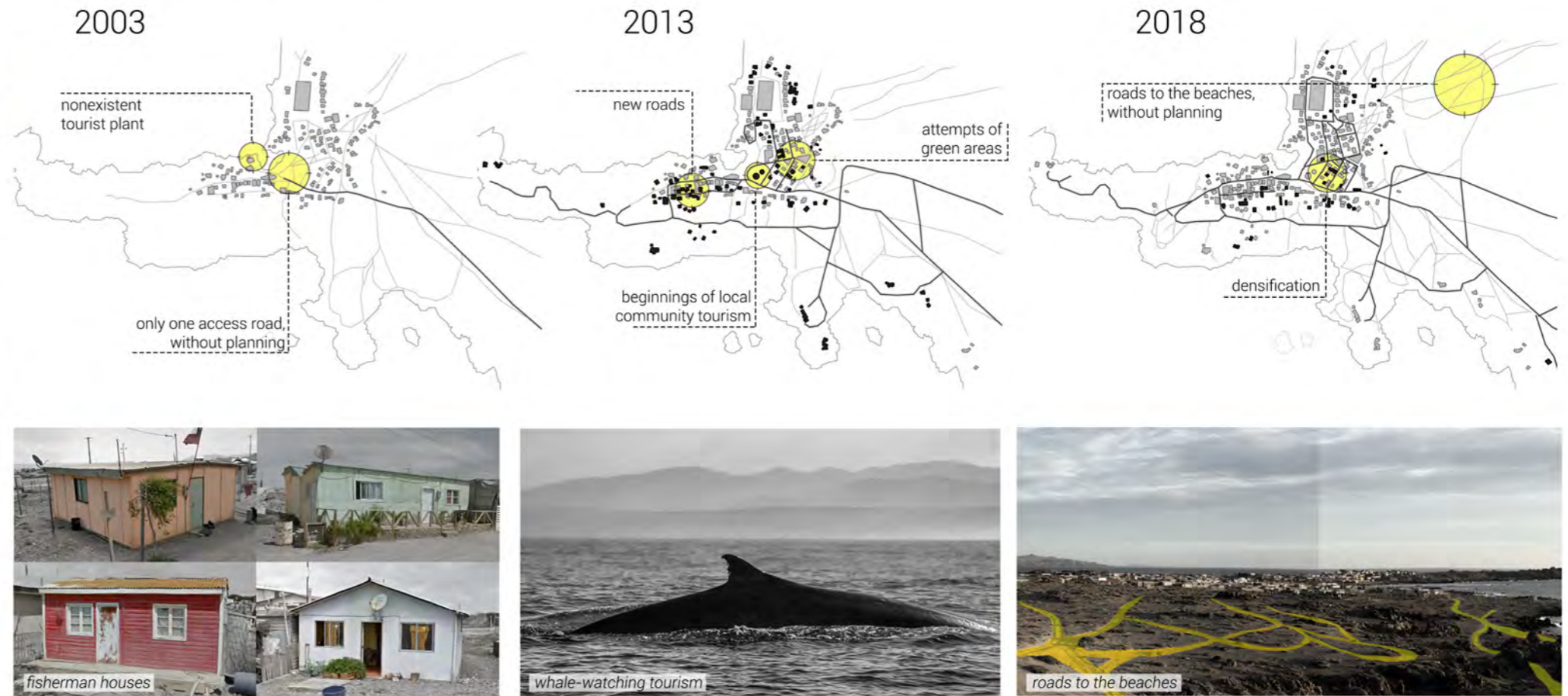
Consult the web page <http://landscape.coac.net/>

CONTEXT OF CHAÑARAL DE ACEITUNO AND ITS RELATIONSHIP WITH THE NEARBY VILLAGES



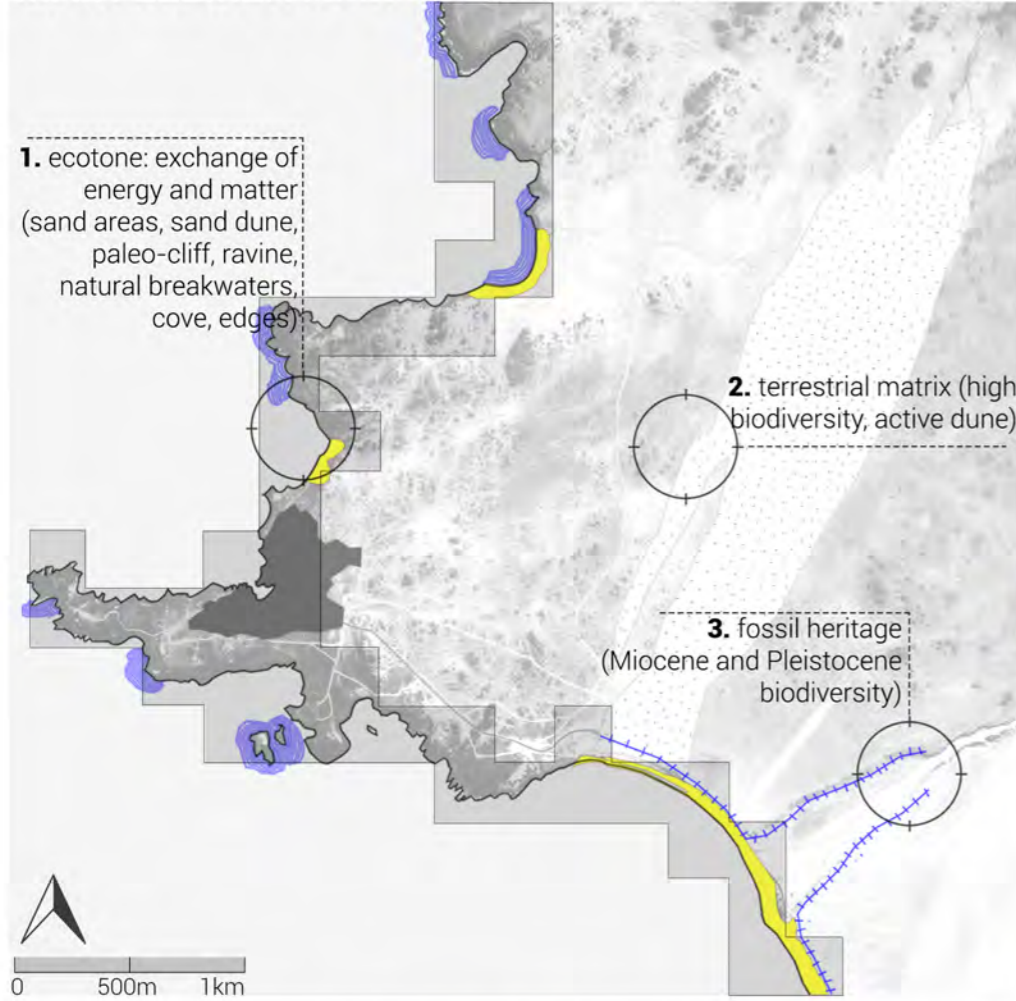
The case of study is a little southern coastal village in the Atacama Region, in Chile, called Chañaral de Aceituno. Here elements that contribute to the uniqueness of its landscape are gathered, which are the high diversity of native flora of the Atacama Desert, its location in front of an island inhabited by a large colony of humboldt penguins, and the summer sighting of large marine mammals.

EVOLUTION OF THE VILLAGE

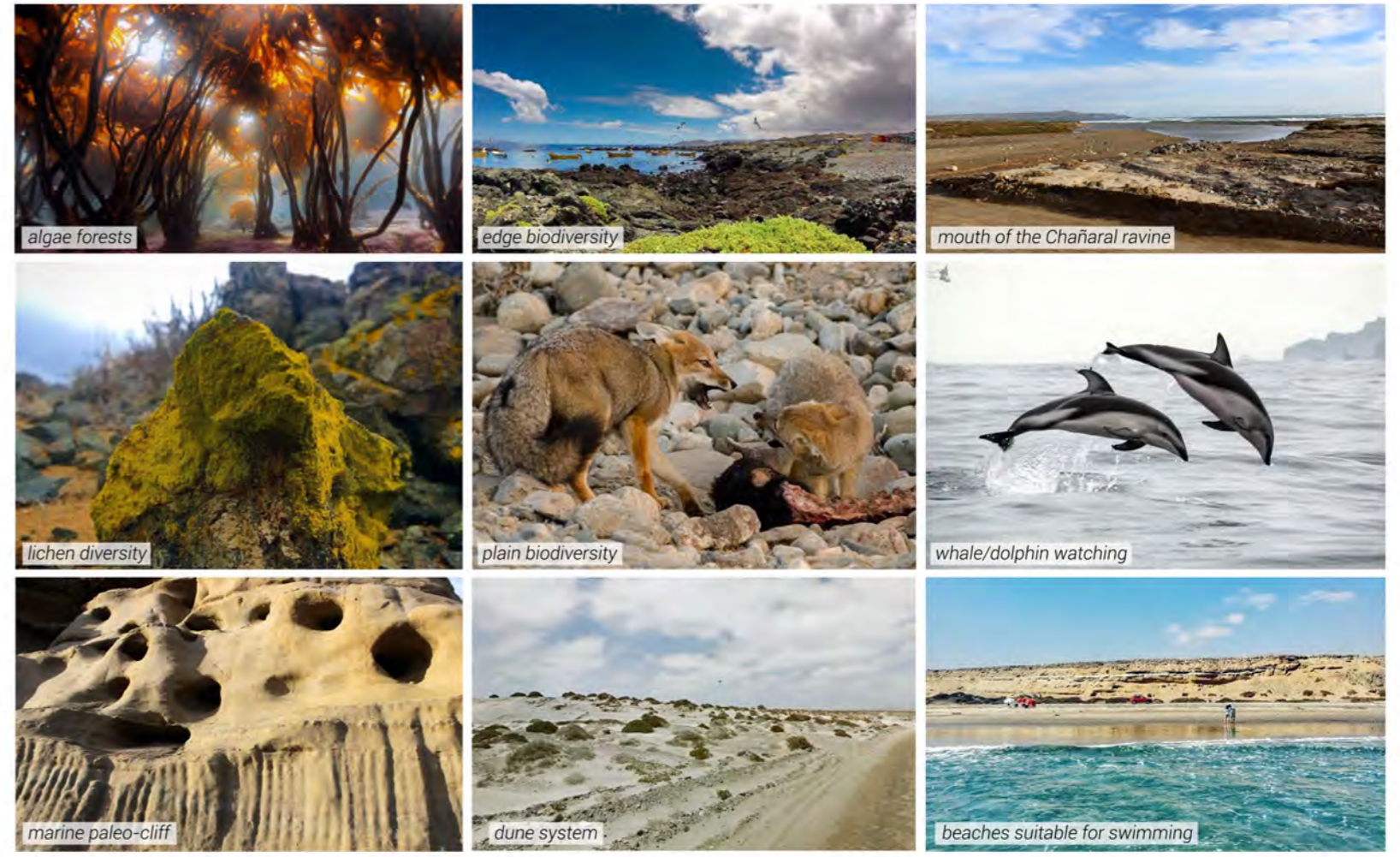


fishing cove "Chañaral de Aceituno"

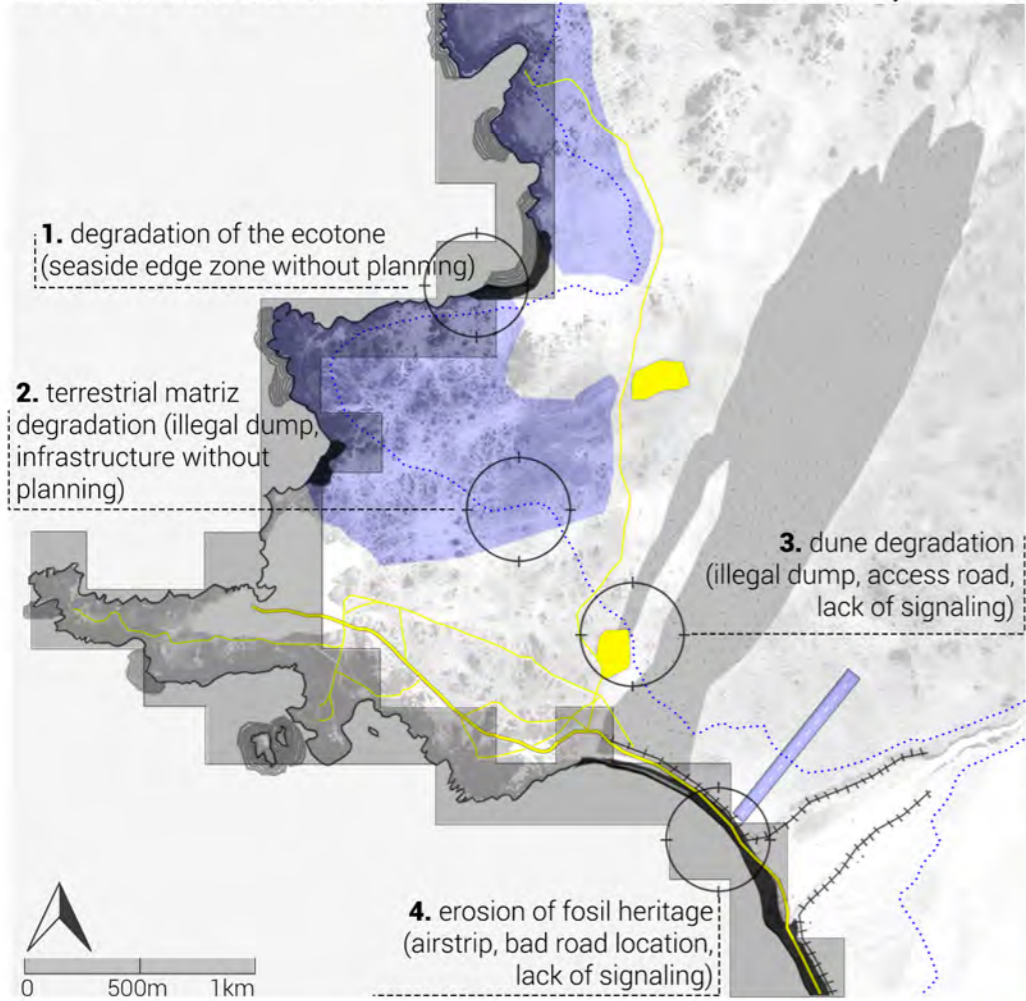
MAIN ELEMENTS OF THE NATURAL HERITAGE IN THE AREA



- NATURAL HERITAGE**
- EDGES DYNAMICS**
- edges diversity
 - ecotone (coast)
 - beach sand areas
 - natural breakwaters
- TERRESTRIAL MATRIX**
- vegetation cover
 - active dune
- FOSSIL HERITAGE**
- marine paleo-cliff



DETERIORATION OF THE NATURAL HERITAGE, DUE TO HUMAN IMPACT ON THE LANDSCAPE

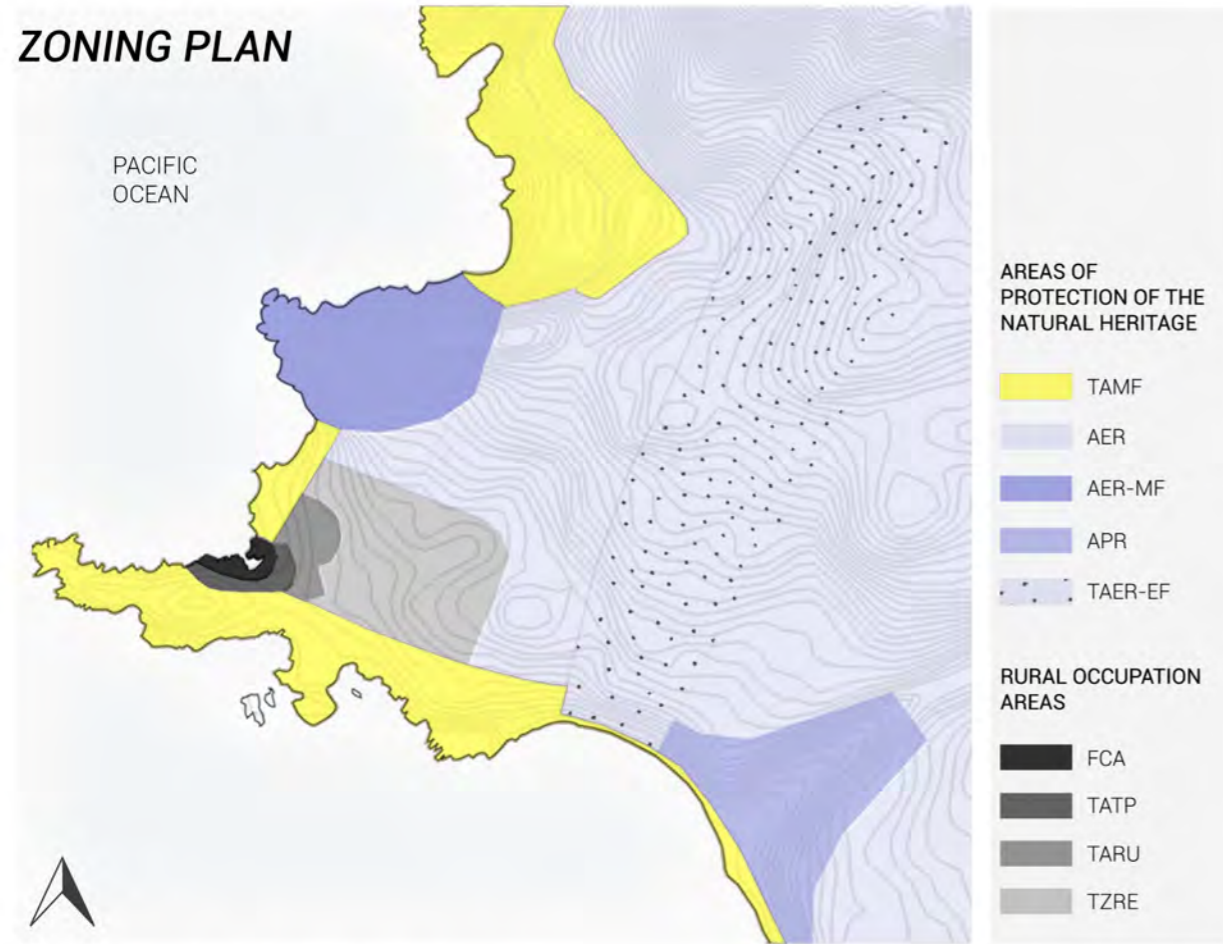


- NATURAL HERITAGE**
- EDGE DYNAMICS**
- edges diversity
 - ecotone (coast)
 - beach sand areas
 - natural breakwaters
- TERRESTRIAL MATRIX**
- vegetation cover
 - active dune
- FOSSIL HERITAGE**
- marine paleo-cliff
- IMPACTS ON THE NATURAL HERITAGE**
- INFRASTRUCTURE**
- airstrip
 - access road
 - soil tracks
- DIRECT IMPACTS**
- patches (multiple soil tracks)
 - tsunami extension
 - illegal dump



LANDSCAPE TERRITORIAL PLANNING OF CHAÑARAL DE ACEITUNO

ZONING PLAN



GENERAL PURPOSE

Minimize the deterioration of the natural heritage of the Chañaral de Aceituno village, caused by human actions; through the territorial planning of the landscape, in order to improve the quality of life of the inhabitants, and encourage local tourism development.

AREAS OF PROTECTION OF THE NATURAL HERITAGE

TERRESTRIAL AREA OF MULTIPLE FUNCTIONS (TAMF)

TOURISM DEVELOPMENT ZONES AND AREAS OF PROTECTION

- Interventions allowed
- Formalization of the coastal edge
 - Landscape contemplation infrastructure

AREA OF ENVIRONMENTAL RELEVANCE (AER)

AREA OF PROTECTION OF THE COASTAL ARID LANDSCAPE (educational and recreational approach)

- Interventions allowed
- Formalization of walking trails
 - Recreation infrastructure

AREA OF ENVIRONMENTAL RELEVANCE OF MULTIPLE FUNCTIONS (AER-MF)

EXCLUSIVE TOURIST AREA ASSOCIATED WITH LIQUINS, AND AREA OF PROTECTION

- Interventions allowed
- Infrastructure of support for recreational and tourist activities
 - Formalization of walking trails

AREA OF PALEONTOLOGICAL RELEVANCE (APR)

AREA OF CONSERVATION AND EXCLUSIVE TOURISM OF THE FOSSIL HERITAGE (EDUCATIONAL AND SCIENTIFIC APPROACH)

- Interventions allowed
- Circulation of appreciation of the fossil heritage, with special care in zones susceptible to the alteration or extraction of fossils.

TERRESTRIAL AREA OF ECOLOGICAL RELEVANCE, OF EXCLUSIVE FUNCTIONS (TAER-EF)

DUNAR SYSTEM CONSERVATION AREA

- Interventions allowed
- Specific circulations or installations, compatible with the ecological process present

RURAL OCCUPATION AREAS

FISHING COVE AREA (FCA)

LOCAL FISHERY PRODUCTIVITY AREA, AND DEVELOPMENT OF TOURISM ASSOCIATED WITH WHALE-WATCHING AND EXPLORATION OF MARINE BIODIVERSITY

- Interventions allowed
- Infrastructure to support fishing and tourism activities

TERRESTRIAL AREA OF THE TOURIST PLANT (TATP)

AREA DESIGNATED TO THE DEVELOPMENT OF THE TOURIST PLANT

- Interventions allowed
- Improvement of structuring routes
 - Ordering of the tourist offer

TERRESTRIAL AREA OF RESIDENTIAL USE (TARU)

RESIDENTIAL AREA, PUBLIC SPACE AND GREEN AREAS

- Interventions allowed
- Improvement of structuring routes and public space infrastructure
 - Creation of public green areas

TERRESTRIAL ZONE OF RURAL EXPANSION (TZRE)

AREA INTENDED FOR THE PROJECTION OF THE EXISTING RURAL AREA

- Interventions allowed
- Interventions or structuring routes of the future extension of the rural area

AREAS OF PROTECTION OF THE NATURAL HERITAGE



RURAL OCCUPATION AREAS

