

Country / City

University / School

Academic year

Title of the project

Authors

SPAIN

LAS PALMAS DE GRAN CANARIA - SCHOOL OF ARCHITECTURE

2016 - 2017

WATER PATH IN THE HUERTA GRANDE

JOSÉ ANTONIO MELO BELLO





PERFORMATIVE NATURE

Barcelona International Landscape Architecture Biennial

September 2018 **Barcelona**

SCHOOL PRIZE

X International Landscape Architecture Biennial

Máster d'Arquitectura del Paisatge -DUOT - UPC

ETSAB- Escola Tècnica Superior

d'Arquitectura de Barcelona

Avenida Diagonal, 649 piso 5

08028 Barcelona-Spain

TECHNICAL DOSSIER

Title of the project WATER PATH IN THE HUERTA GRANDE
Authors JOSÉ ANTONIO MELO BELLO
Title of the course FINAL CAREER PROJECT
Academic year 2016 - 2017
Teaching Staff JUAN ANTONIO GONZÁLEZ PÉREZ
Department/Section/Program of belonging

University/School LAS PALMAS DE GRAN CANARIA - SCHOOL OF ARCHITECTURE

Written statement, short description of the project in English, no more than 250 words

Vilaflor, agrarian nucleus of the south of Tenerife and of scarce population, it is located on a plateau facing south and at an altitude of 1400 meters above sea level. It is surrounded like a half moon by the slopes that descends from the Cañadas del Teide.

Being an inevitable point of passage for many visitors of the Teide, Vilaflor stands out for maintaining a rural environment with a natural landscape populated by Canarian pines, with an artificial landscape formed by abundant white terraces (covered with white sand "jable") linked to the existence of water extracted mostly from the subsoil, and its traditional architecture that was made shortly after the Castilian conquest.

We will be located in the Huerta Grande, a set of terraces internal to the historic center of Vilaflor and in the northern vertex of this and the region of Abona, with the intervention as a preamble to access protected natural areas.

It is proposed in the first place an operation to recover certain elements that have disappeared from the landscape; and then carry out minimal interventions where it is intended to highlight the place, according to the needs of the people. A Multifunctional Center oriented mainly to the neighbours and as an agglutinate of activities and an Interpretation Center in which the visitor will be able to know the characteristics of the place and especially the importance that the water had in the formation of the town.

For further information

Máster d'Arquitectura del Paisatge -DUOT - UPC

T: + 34 93 401 64 11 / +34 93 552 0842

Contact via email at: biennial.paisatge@upc.edu

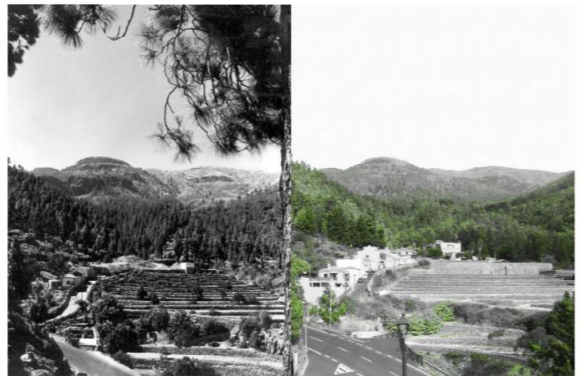
Consult the web page <http://landscape.coac.net/>

CHASNA, por otro nombre Vilaflor, dista 2 leguas de Adeje y 13 de La Laguna. Es lugar arruado en una calle larga, aunque desigual y pendiente, por ser aquí un vallecito poblado de árboles frutales; pero, como es grande la altura, lo es también el frío. Allí nieva todos los inviernos. Por uno y otro lado empiezan las cumbres y los pinos. Las aguas son las mas celebradas de las Canarias. Haylas agrías y medicinales. Es país feracísimo en trigo, si llueve a tiempo. Tiene buena iglesia parroquial, con cura beneficiado provisión del rey, y un convento de agustinos de 10 frailes. Su feligresía es de 2.586 personas, algunas en los pagos de San Miguel, Arona, Escalona, el Valle, Chinama, Jama, Fonche, Aldea y Cabo-blanco. Hay 4 ermitas. Está aquí el término de Abona, que fue también corte del rey guanche; y es patria del venerable Pedro de San José Bethencourt, Fundador de los betlemitas en Indias"

Viera y Clavijo, José de (1950) [1772-1773]. << Volume III, book XV >>. Noticias de la historia general de las Islas Canarias. Santa Cruz de Tenerife: Goya Ediciones.



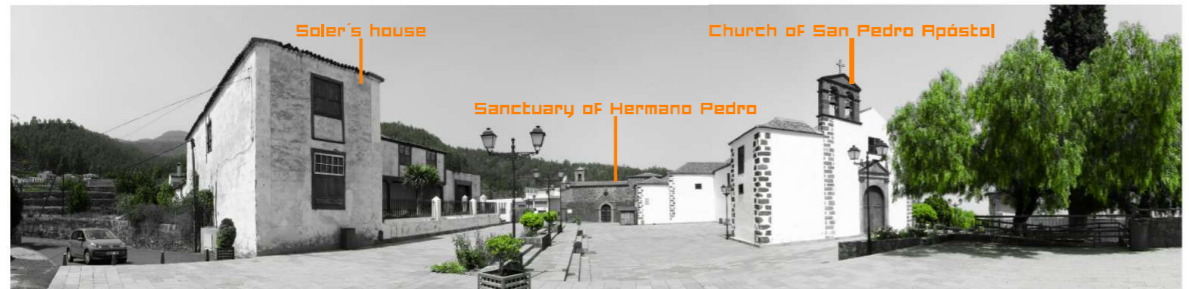
VUE DU VILLAGE DE CHASNA et du morne de Sombrenito J.J. Williams



Huerta Grande in the middle of the twentieth century



Panoramic view of the Huerta Grande. View From West to East



Historical Set



Fountain



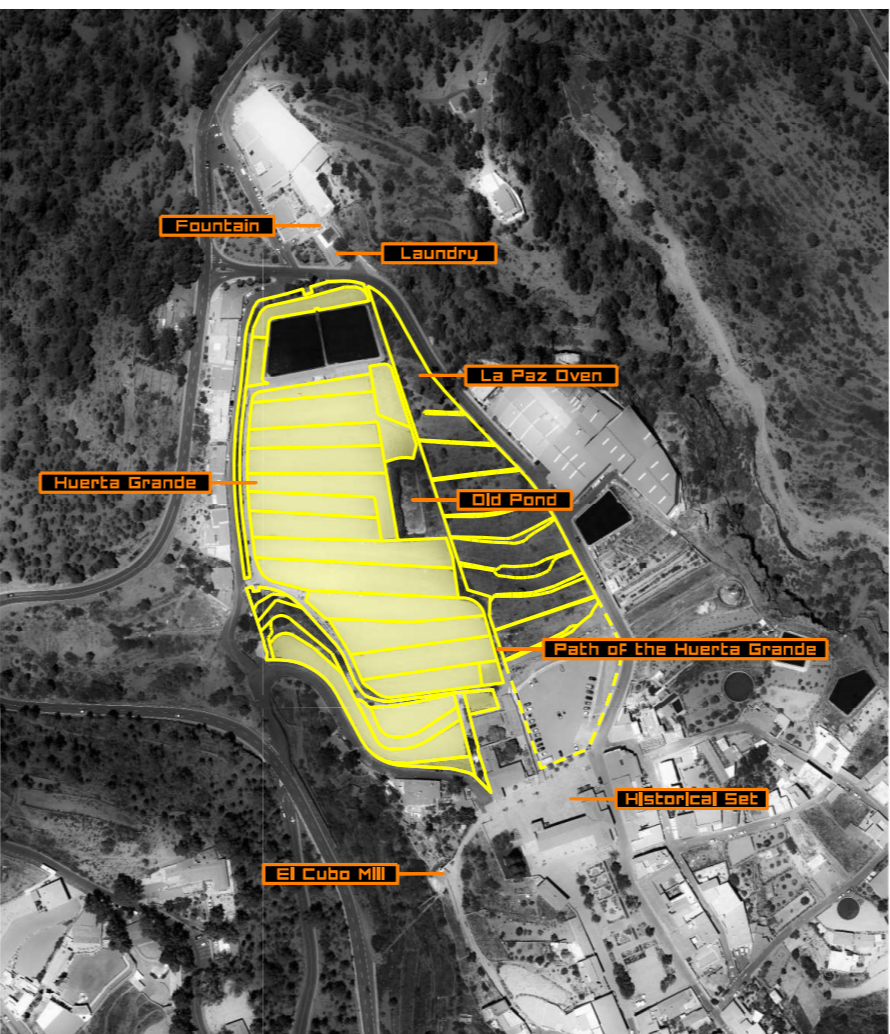
Laundry



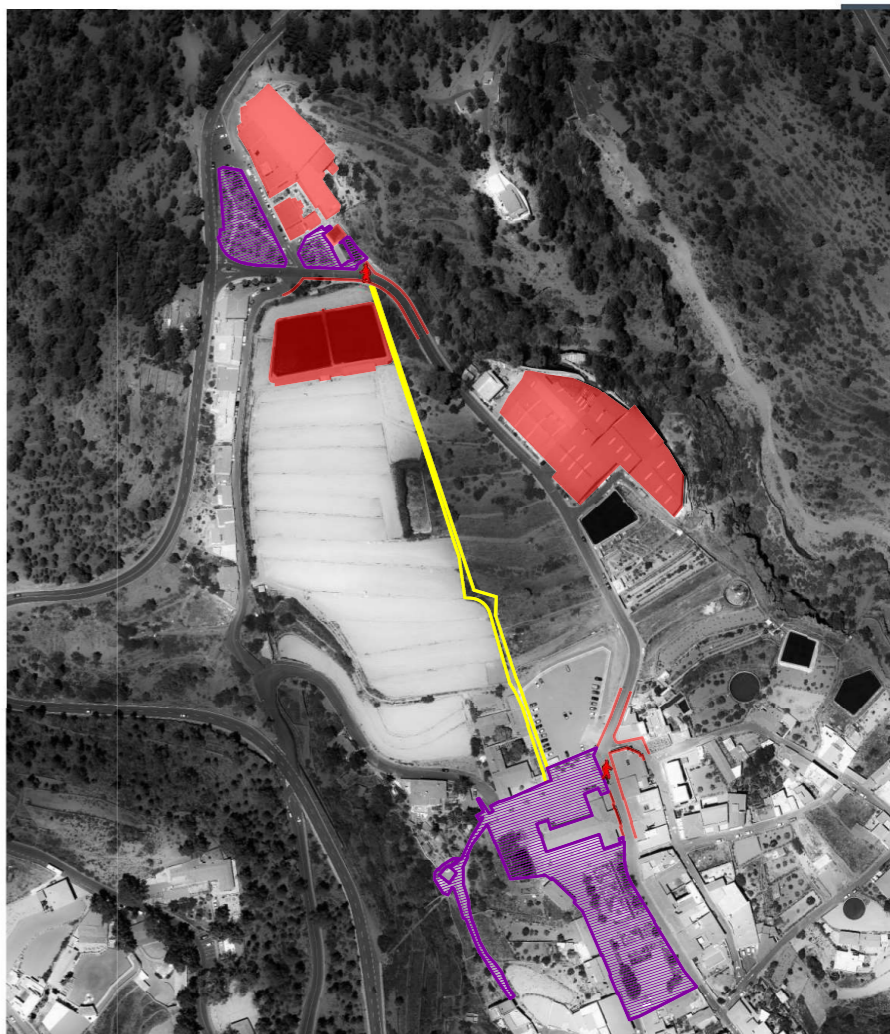
La Paz Oven and small pond



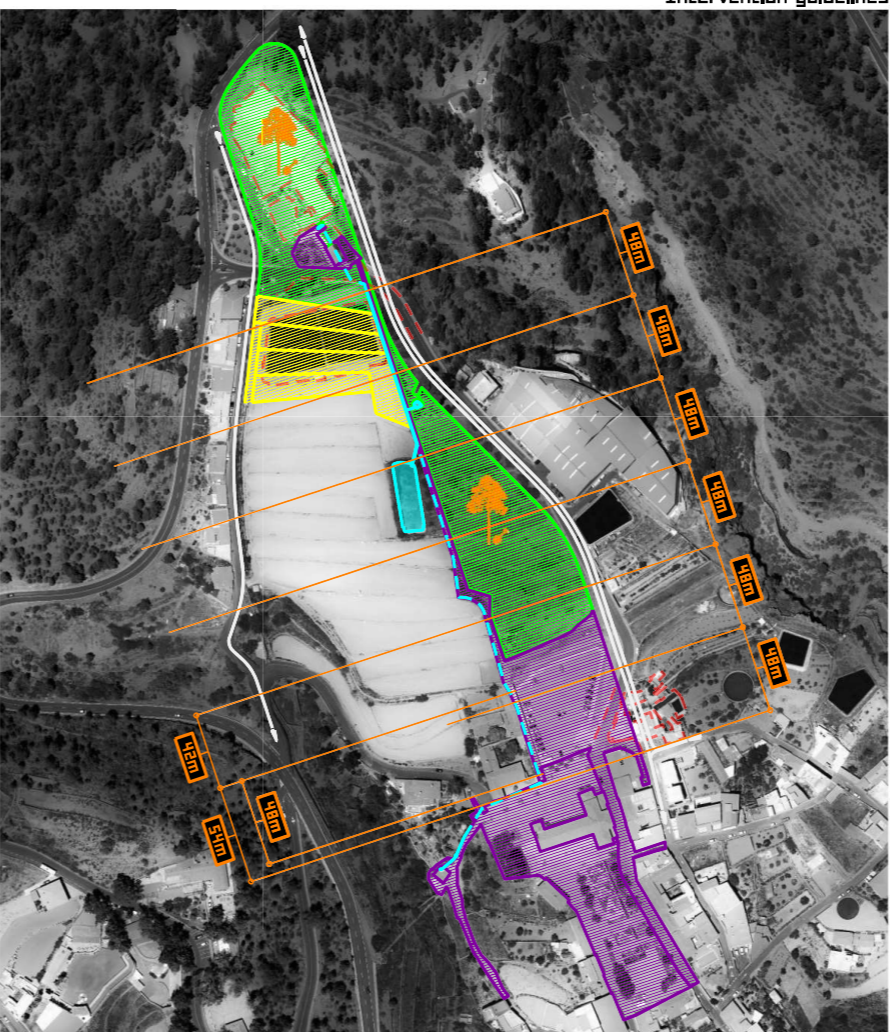
El Cubo Mill



Huerta Grande



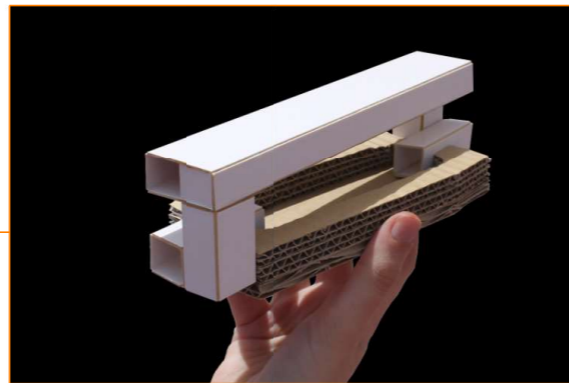
Conflicts Building proposal, Interpretation Center (InCe) and Multifunctional Center (MuCe)



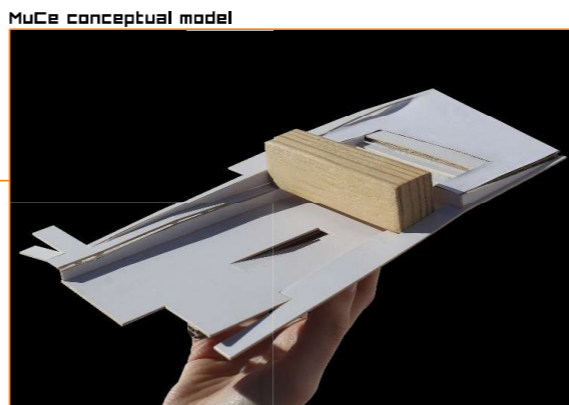


Vergara gallery

The Interpretation Center aims to promote an environment of understanding and dissemination, seeking to reveal to the visitor the importance that water had in the development of VilaFlor. Topics related to the collection of groundwater by means of galleries and wells will be discussed, as well as the transportation of pipelines from the outcrops to the ponds where they are stored and their subsequent use in local agriculture. It will be located in the center of the Huerta Grande, on the old pond and parallel to the path of the Huerta Grande. With this we managed to position it in an isolated way, standing out in a space of terraces and remaining perceptible from the entire perimeter of the Huerta Grande. The building is developed in an operation of hollow container tubes, like galleries and wells, interlaced, that go through the old pond making it part of it. Highlight a single volume [lintel] suspended in height that is shown as a strange isolated high element with a background formed by a mass of pines. Inside, its connection with the outside is produced only by its extremes, which, like a spyglass, capture the north and south views of the landscape.

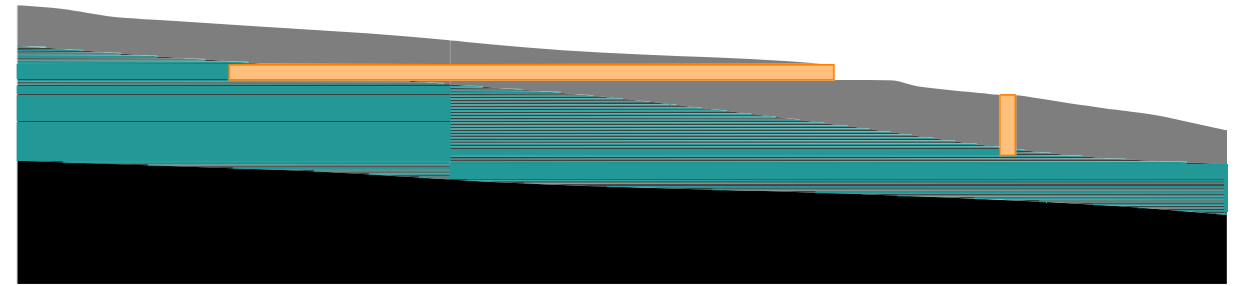


InCe conceptual model



MuCe conceptual model

The Multifunctional Center aims to respond mainly to the various local activities demanded by the residents of VilaFlor and those activities that potential visitors may generate, thus becoming a meeting point and interaction of its users. It will be located tangentially and perpendicular to the path of the Huerta Grande, at the north end of the. With this we managed to regularize its limits and create a scope together with the Hermano Pedro's sanctuary, the San Pedro Apostol's church and the Soler's house. With respect to the latter, which we turned into a cultural house, it will have a more direct relationship when it is complemented. Highlight a single volume [lintel] suspended in height, where most of the activities will be carried out, which allows us the direct pedestrian connection between San Pedro Apostol's square and the forested area of pine trees. Its North and South facades are glazed, seeking to express its open function and allowing both the natural and architectural landscape of its environment to flow through its interior.



Gallery [horizontal] and well [vertical]. Representation in section schema



Montage. View From South to North



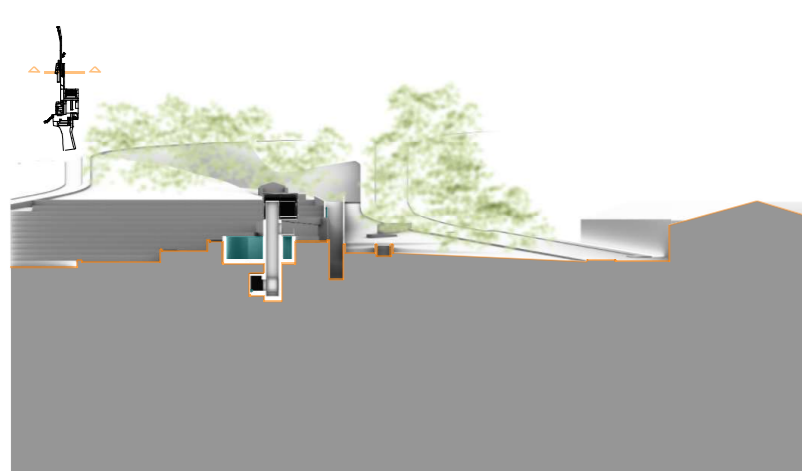
Montage. View From North to South



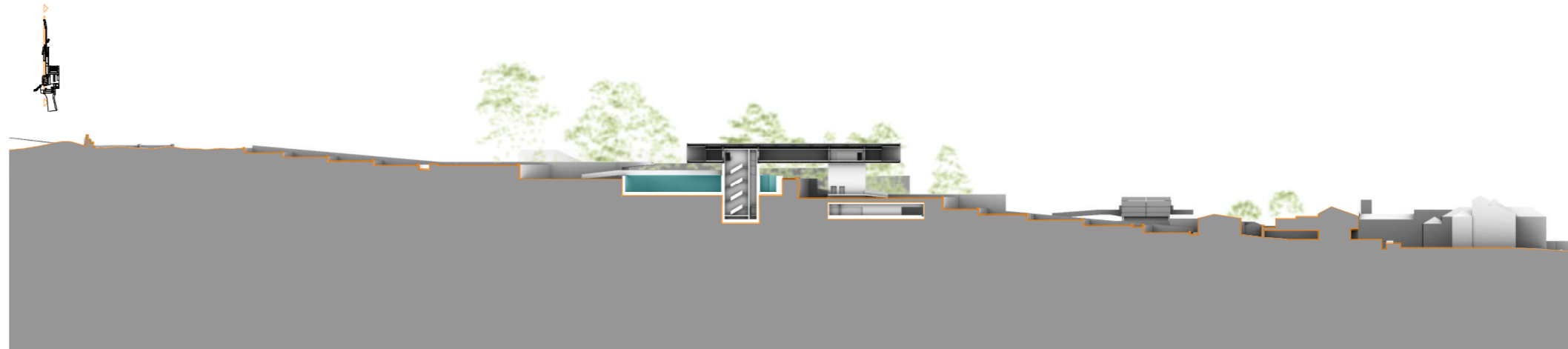
Montage. View From South to North



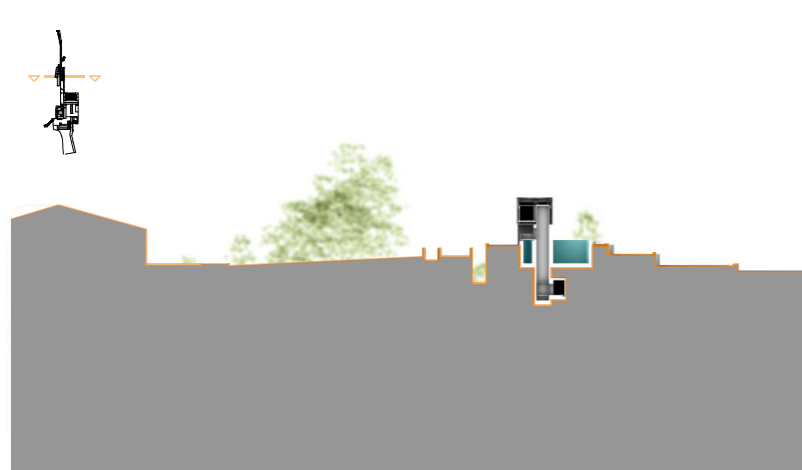
Montage. View From North to South



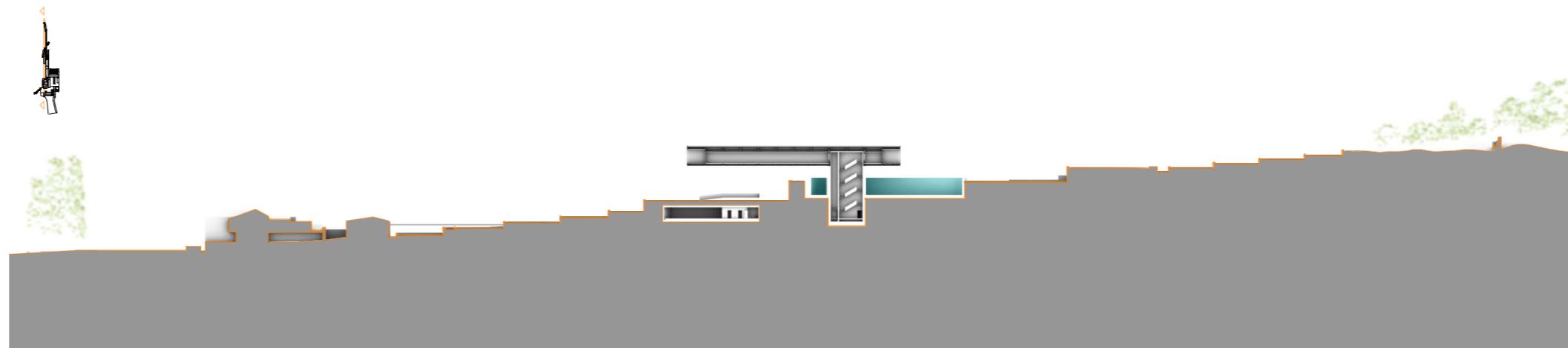
Cross section. View From South to North



Longitudinal section. View From West to East



Cross section. View From North to South



Longitudinal section. View From East to West



Longitudinal view From West to East