



---

Country / City ..... Italy / Bari.....  
University / School ..... Polytechnic University of Bari.....  
Academic year ..... 2017/2018.....  
Title of the project ..... Lighthouses of the Tirrenian Sea.....  
Authors ..... Roberta Valentina De Giglio, Davide De Luca, Annamaria Dicarlo, Nicola La Vitola, Silvia Mannarelli, Luigi Santamaria.....





# PERFORMATIVE NATURE

Barcelona International Landscape Architecture Biennial

September 2018 **Barcelona**

SCHOOL PRIZE

X International Landscape Architecture Biennial

Máster d'Arquitectura del Paisatge -DUOT - UPC

ETSAB- Escola Tècnica Superior

d'Arquitectura de Barcelona

Avenida Diagonal, 649 piso 5

08028 Barcelona-Spain

## TECHNICAL DOSSIER

Title of the project	Sardinia lighthouses path: Porto Ponte Romano and Capo d'Orso as examples of coastal landscapes
Authors	Roberta Valentina De Giglio, Davide De Luca, Annamaria Dicarolo, Nicola La Vitola, Silvia Mannarelli, Luigi Santamaria
Title of the course	Master Degree in Architecture
Academic year	2017/2018
Teaching Staff	Michele Montemurro, Nicola Martinelli, Gabriele Rossi
Department	DICAR - Architecture
University/School	Polytechnic University of Bari

### Written statement, short description of the project in English, no more than 250 words

The experimentation planning bases on the identification of founding features of places to rebuild their new identity starts from the recognition of the relationship between lighthouse and site, considering the places of disuse and abandonment as the opportunity to rebuild a new syntactic unity whom the lighthouse represents the polarity. The two case studies analysed, Porto Ponte Romano at Sant'Antioco (in the South) and Capo d'Orso at Palau (in the North) are located near industrial and military unused areas.

They represent symbolically the beginning/ending doorway of Sardinia lighthouses. Also they have a different architectural form and relationship with the shape of land which imposes to take on a different approach towards their reuse, recycling and integration. The goal of the experimentation planning is to define an intervention method trying to identify the right categories and the corresponding compositional grammar to build and rebuild the identity of these places and the landscape shape. All this balancing the traditional settlement of the region with its geographic complexity and topographic articulation of the sites. In the study area of Porto Ponte Romano the project takes on the pond of the canal as a defined field of intervention and it rebuilds the relationship of the lighthouse with the water location and salt landscape. It always considers the infrastructure trying to increase nature elements of usage and experience as gangways, jetties and panoramic viewpoints to allow watching, bathing and walking in the water and location saltworks. In the second study case at Capo d'Orso the project provides for interventions focused on the improvement of the tourism infrastructure, the port, the usability of the island places with the construction of a system of physical and visual relationships through the path, the connection elements (stairs, ramps, bridges, embankment) and the watching places (panoramic viewpoints, views, towers) to build a 'narrative continuity' through a 'promenade architecturale' which gets in from the sea to the top of plateau and describing the sense of place as a series of different and identity-making places.

For further information

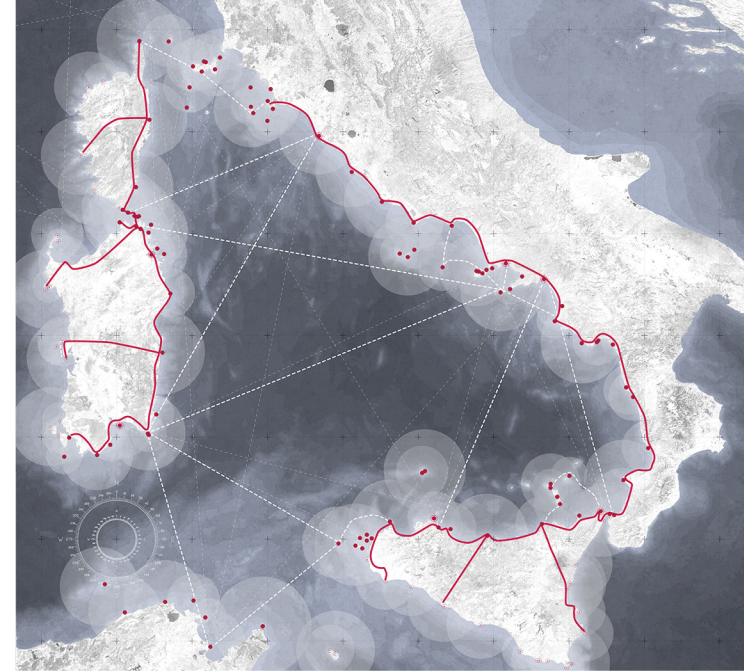
**Máster d'Arquitectura del Paisatge -DUOT - UPC**

T: + 34 93 401 64 11 / +34 93 552 0842

Contact via email at: [biennial.paisatge@upc.edu](mailto:biennial.paisatge@upc.edu)

Consult the web page <http://landscape.coac.net/>





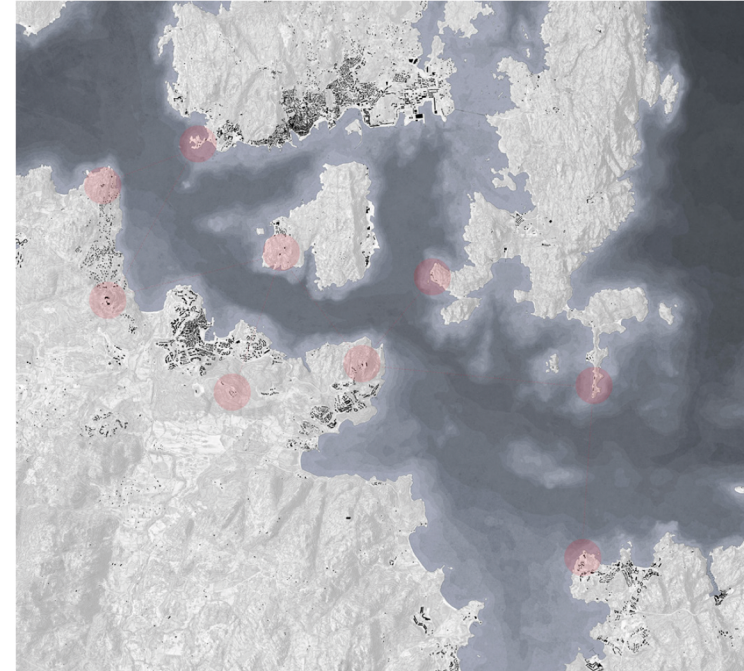
Tyrrhenians lighthouses



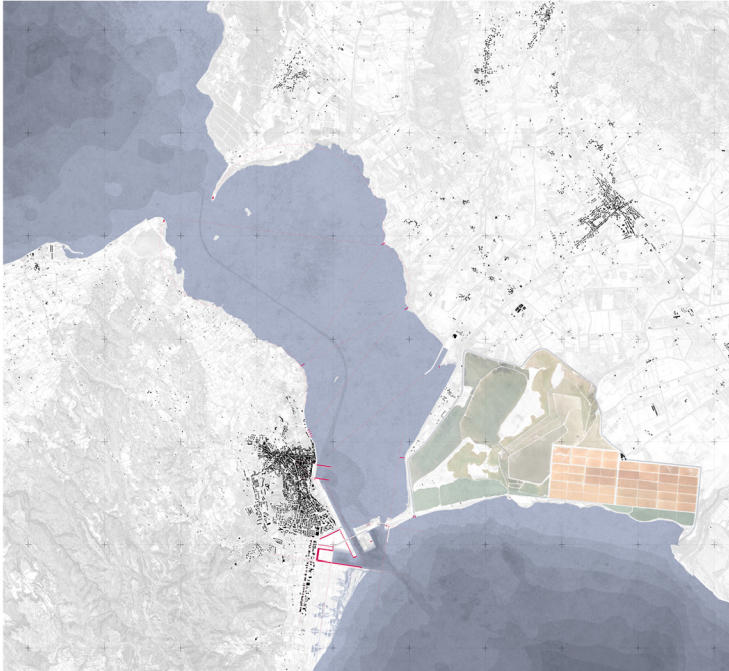
Naturalistic system of Sardinia



Sardinia lighthouses path



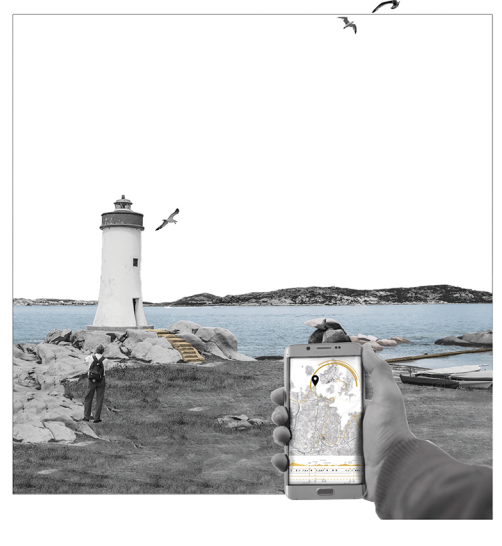
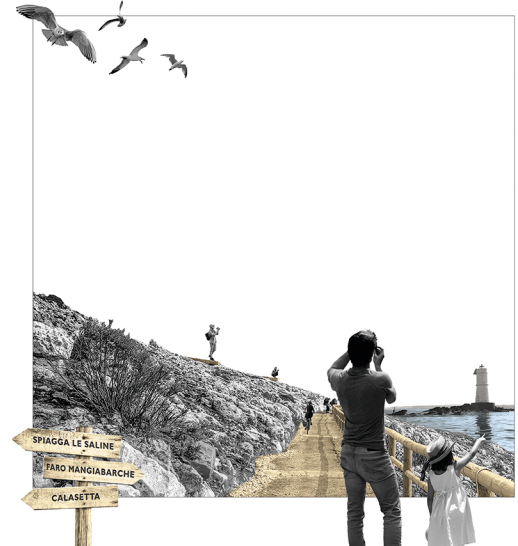
Position and geographic system framework - Capo d'Orso



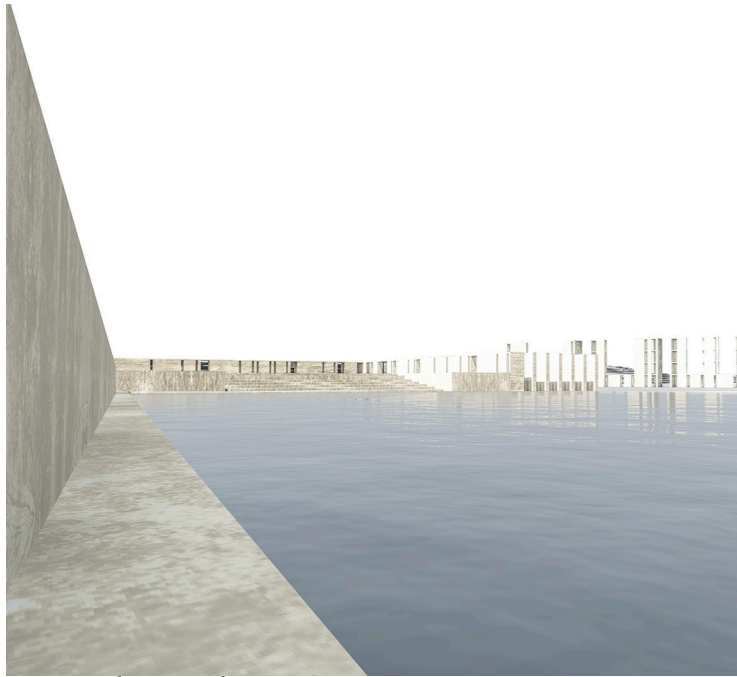
Position and geographic system framework - Porto Ponte Romano



View of path steps







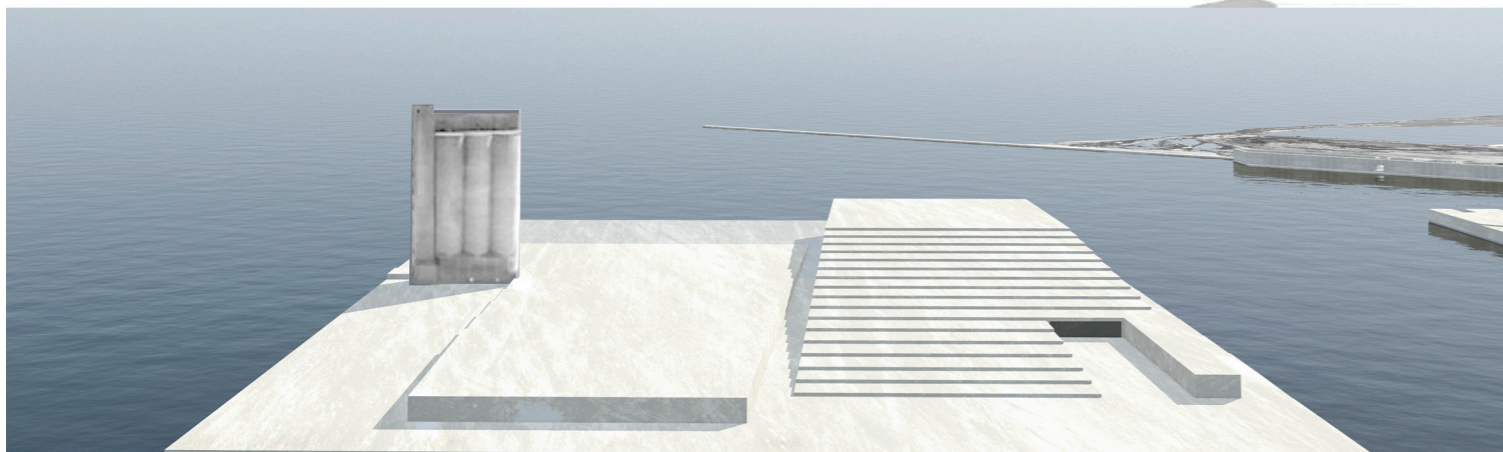
View number 1, trading port



View of Porto Ponte Romano lighthouse



Plan



View number 2, trading port



View of Palmas Gulf





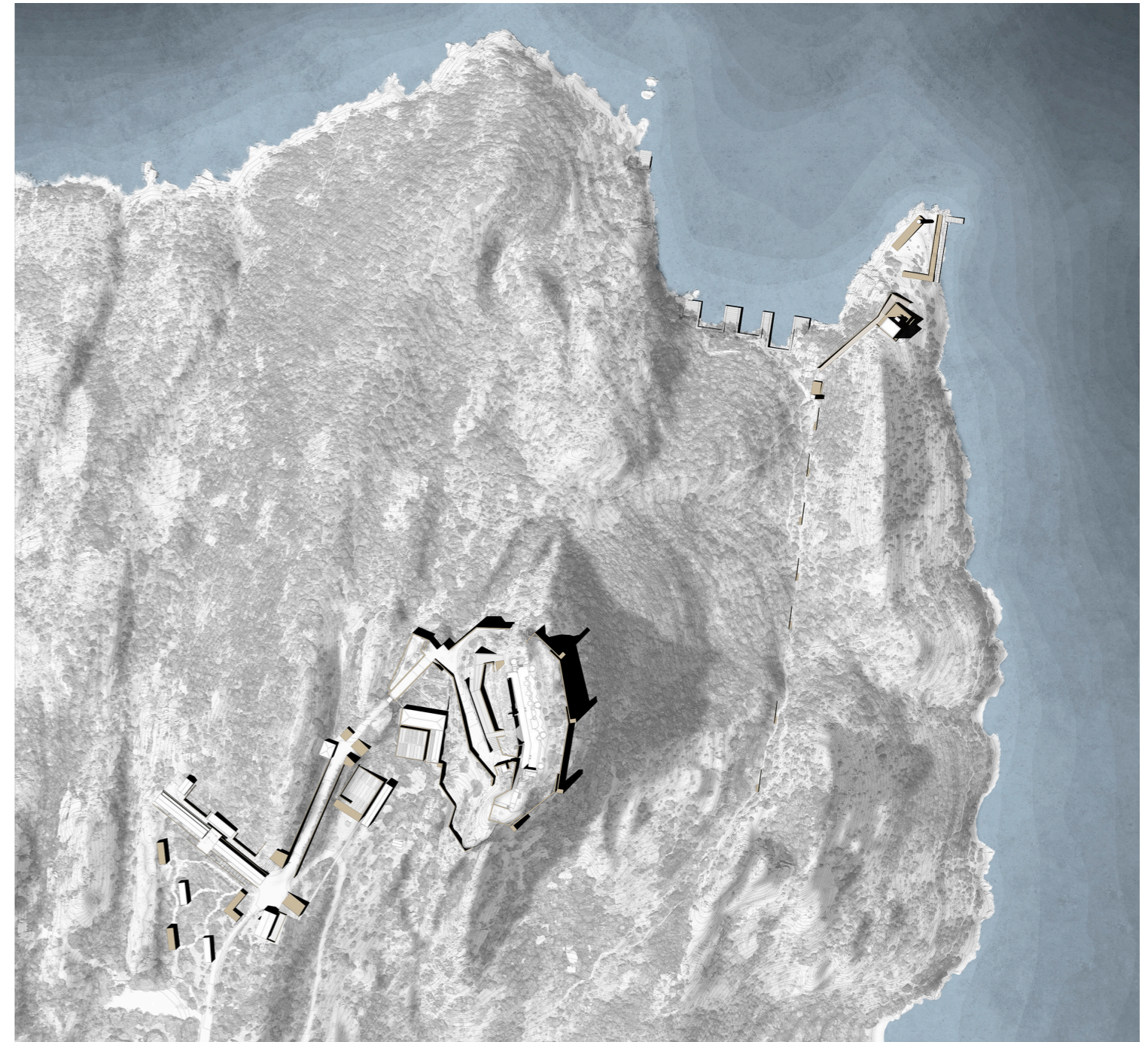
View from the Lighthouse



View of Capo d'Orso lighthouse



View of the military battery and La Maddalena archipelago



Plan



Profile from the sea