



Country / City
University / School
Academic year
Title of the project
Authors

Argentina / Rosario
National University of Rosario / Facultad de Arquitectura, Planeamiento y Diseño
2017/2018
Hybrid Urban Spaces
Manuel Bianchi Yasci / Ignacio Cuenca





PERFORMATIVE NATURE

Barcelona International Landscape Architecture Biennial

September 2018 **Barcelona**

SCHOOL PRIZE

X International Landscape Architecture Biennial

Máster d'Arquitectura del Paisatge -DUOT - UPC
ETSAB- Escola Tècnica Superior
d'Arquitectura de Barcelona
Avenida Diagonal, 649 piso 5
08028 Barcelona-Spain

TECHNICAL DOSSIER

Title of the project	Hybrid Urban Spaces
Authors	Manuel Bianchi Yasci / Ignacio Cuenca
Title of the course	Final Career Project
Academic year	2017/2018
Teaching Staff	Tutor: Arq. Alejandro Beltramone
Department/Section/Program of belonging	
University/School	National University of Rosario / Facultad de Arquitectura, Planeamiento y Diseño

Written statement, short description of the project in English, no more than 250 words

To contextualize the project conceptually, we first want to share our thoughts on the contemporary city.

We understand it as a complex network of interactions juxtaposed with each other in the same space. These interactions are defined by the elements that make up the different layers of the urban space and the activities and programs that are carried out in them. This spatial framework is inhabited by people who in turn propose variables of spontaneous appropriation and new uses. We quote Dr. Edgar Morin in his conference on complexities: "To understand the sense of complexity, two complementary and antagonistic notions must be united, the importance of not conceiving separate objects but the relations between them."

From this idea of relations and interactions between opposites arises the concept on which the project is developed.

The potential to exploit these complex urban interrelations for the elaboration of project strategies, translated into architectural proposals, allow new building events articulated in order to compose a new natural and artificial landscape, define new spaces that generate civic life and urban regeneration.

Our Final Career Project aims to reflect and ask from the academic how to operate in complex areas crossed by obsolence. Rethink the operation between the urban and the landscape to reimagine the future of certain areas of the city.

As a result, a conjunction between Architecture and Landscape is obtained, the symbiosis between the seemingly opposing notions that make up a single totality and are balanced against each other, organized through a design that allows for adaptability and re-functionalization.

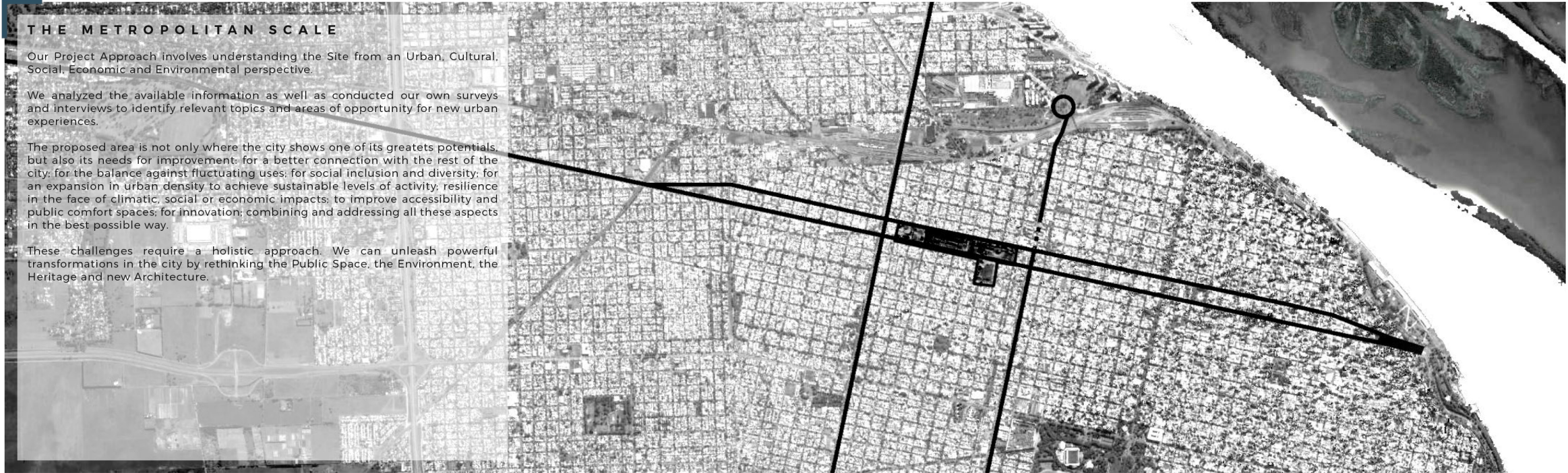
For further information

Máster d'Arquitectura del Paisatge -DUOT - UPC

T: + 34 93 401 64 11 / +34 93 552 0842

Contact via email at: biennial.paisatge@upc.edu

Consult the web page <http://landscape.coac.net/>



THE METROPOLITAN SCALE

Our Project Approach involves understanding the Site from an Urban, Cultural, Social, Economic and Environmental perspective.

We analyzed the available information as well as conducted our own surveys and interviews to identify relevant topics and areas of opportunity for new urban experiences.

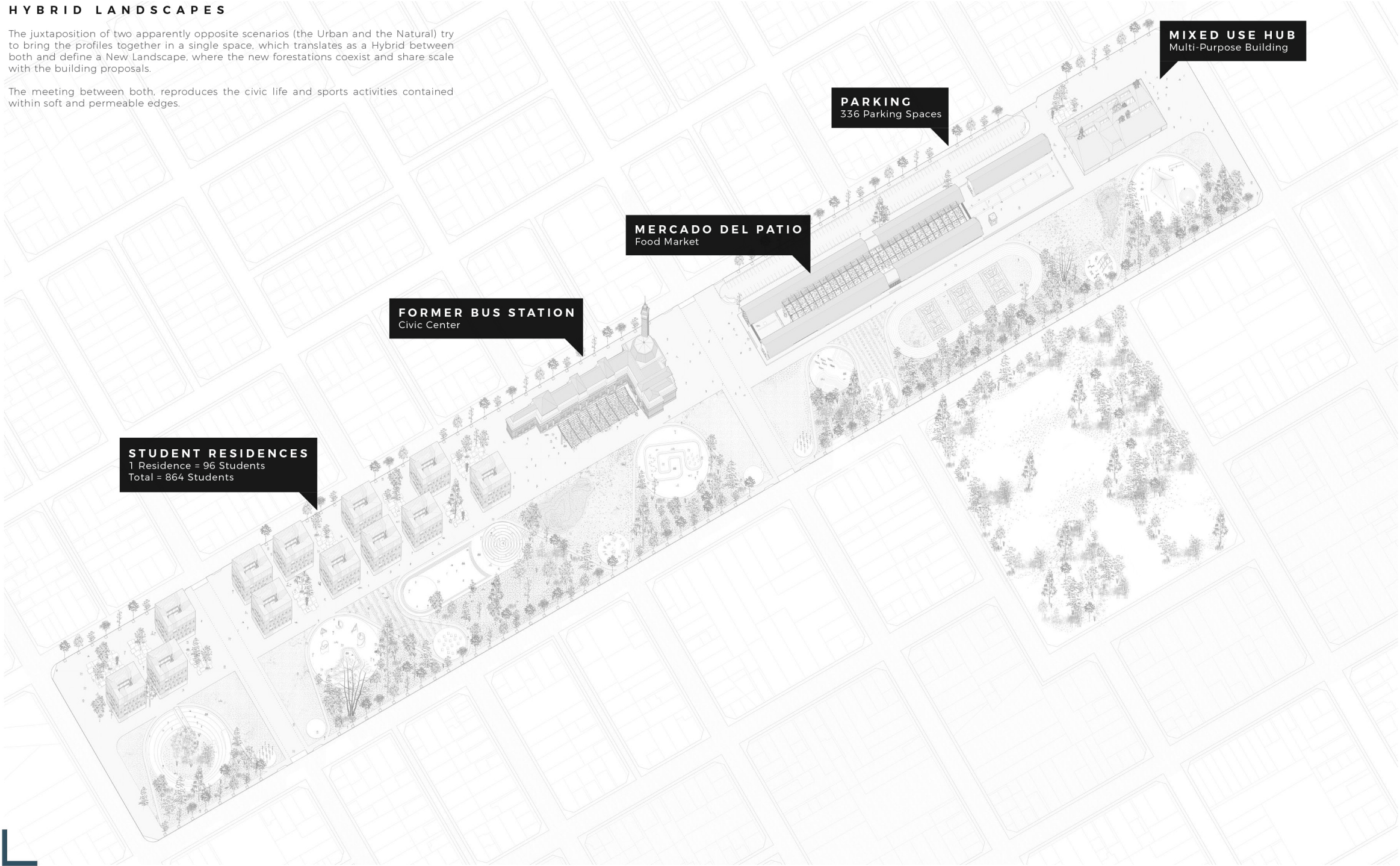
The proposed area is not only where the city shows one of its greatets potentials, but also its needs for improvement: for a better connection with the rest of the city; for the balance against fluctuating uses; for social inclusion and diversity; for an expansion in urban density to achieve sustainable levels of activity; resilience in the face of climatic, social or economic impacts; to improve accessibility and public comfort spaces; for innovation; combining and addressing all these aspects in the best possible way.

These challenges require a holistic approach. We can unleash powerful transformations in the city by rethinking the Public Space, the Environment, the Heritage and new Architecture.

HYBRID LANDSCAPES

The juxtaposition of two apparently opposite scenarios (the Urban and the Natural) try to bring the profiles together in a single space, which translates as a Hybrid between both and define a New Landscape, where the new forestations coexist and share scale with the building proposals.

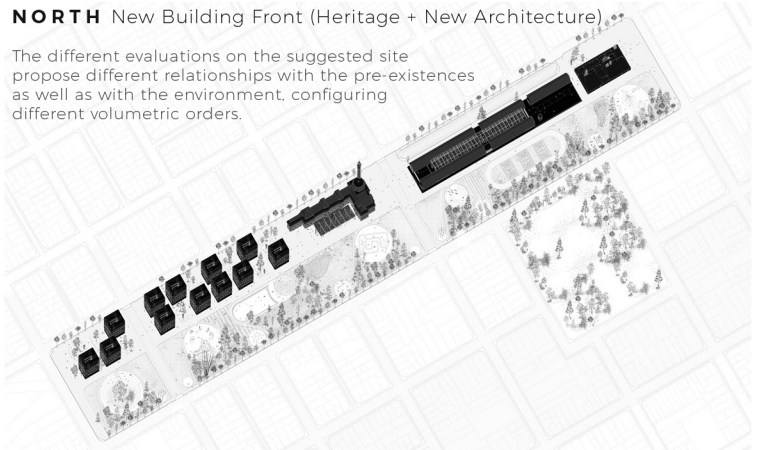
The meeting between both, reproduces the civic life and sports activities contained within soft and permeable edges.



THE SITE

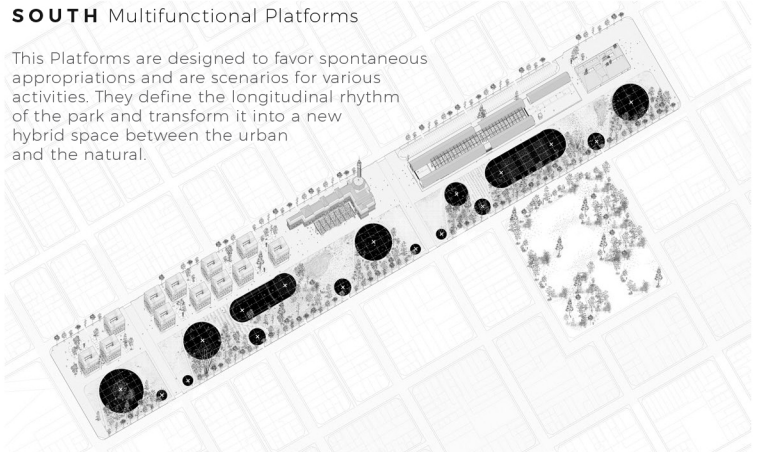
NORTH New Building Front (Heritage + New Architecture)

The different evaluations on the suggested site propose different relationships with the pre-existences as well as with the environment, configuring different volumetric orders.



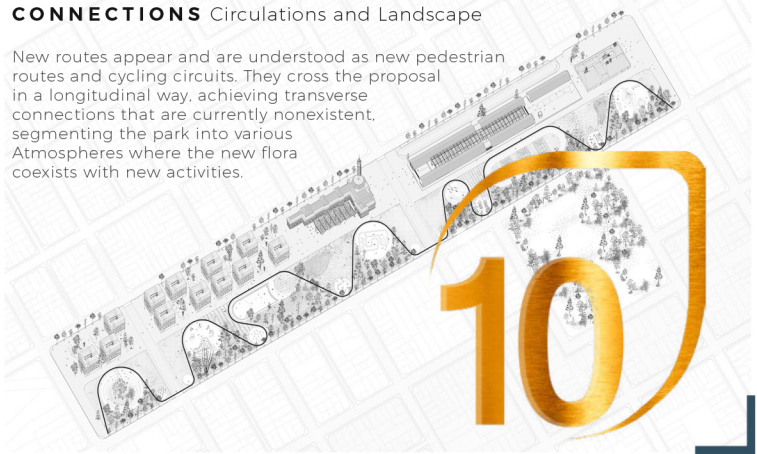
SOUTH Multifunctional Platforms

This Platforms are designed to favor spontaneous appropriations and are scenarios for various activities. They define the longitudinal rhythm of the park and transform it into a new hybrid space between the urban and the natural.



CONNECTIONS Circulations and Landscape

New routes appear and are understood as new pedestrian routes and cycling circuits. They cross the proposal in a longitudinal way, achieving transverse connections that are currently nonexistent, segmenting the park into various Atmospheres where the new flora coexists with new activities.





STUDENT RESIDENCES

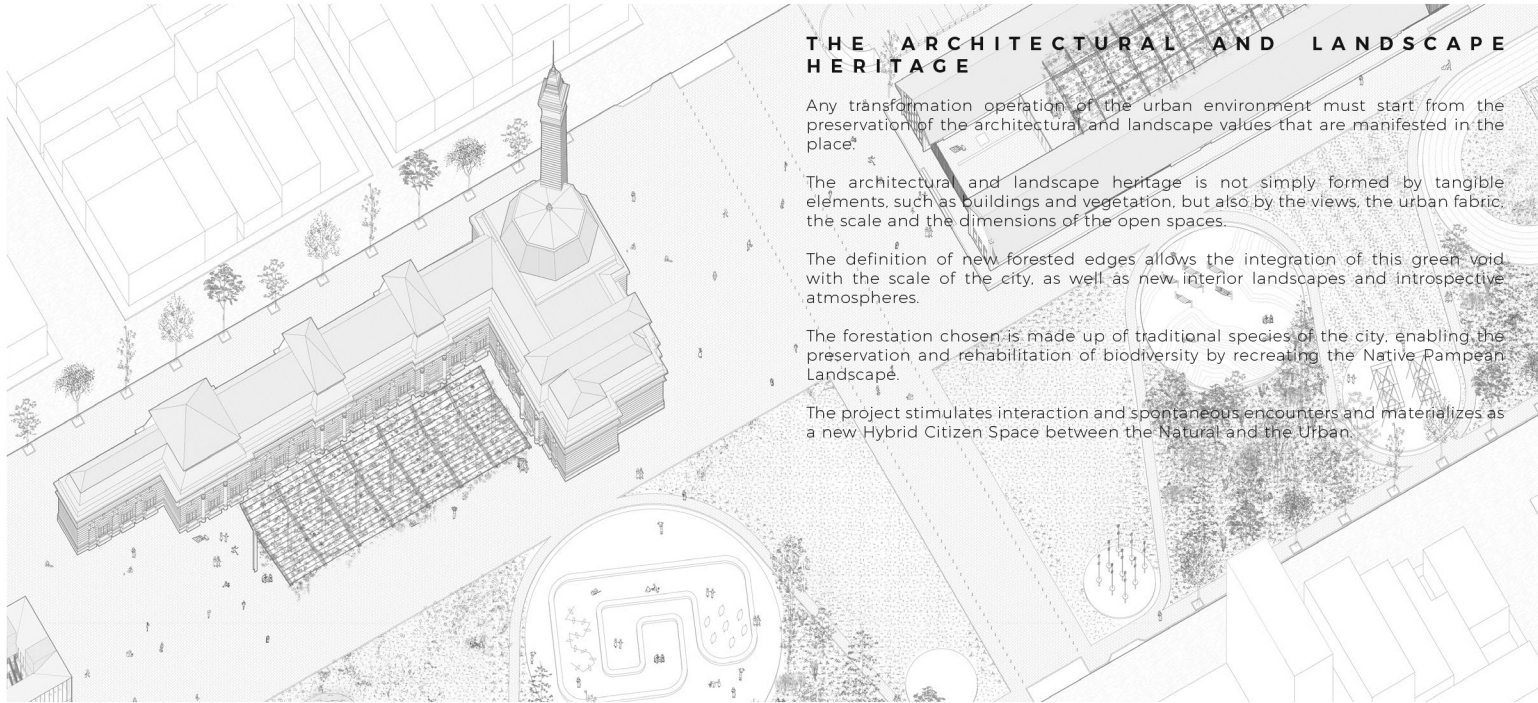
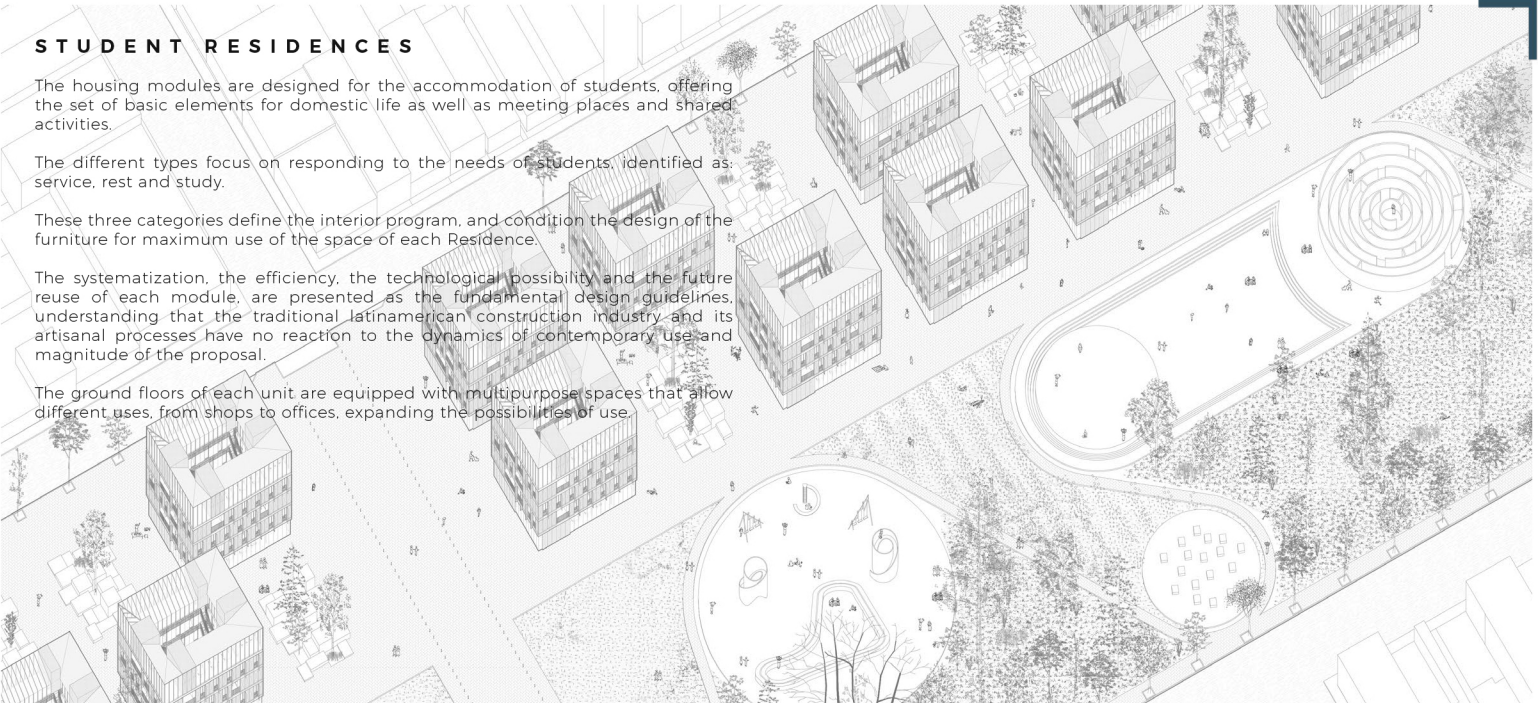
The housing modules are designed for the accommodation of students, offering the set of basic elements for domestic life as well as meeting places and shared activities.

The different types focus on responding to the needs of students, identified as: service, rest and study.

These three categories define the interior program, and condition the design of the furniture for maximum use of the space of each Residence.

The systematization, the efficiency, the technological possibility and the future reuse of each module, are presented as the fundamental design guidelines, understanding that the traditional latinamerican construction industry and its artisanal processes have no reaction to the dynamics of contemporary use and magnitude of the proposal.

The ground floors of each unit are equipped with multipurpose spaces that allow different uses, from shops to offices, expanding the possibilities of use.



THE ARCHITECTURAL AND LANDSCAPE HERITAGE

Any transformation operation of the urban environment must start from the preservation of the architectural and landscape values that are manifested in the place.

The architectural and landscape heritage is not simply formed by tangible elements, such as buildings and vegetation, but also by the views, the urban fabric, the scale and the dimensions of the open spaces.

The definition of new forested edges allows the integration of this green void with the scale of the city, as well as new interior landscapes and introspective atmospheres.

The forestation chosen is made up of traditional species of the city, enabling the preservation and rehabilitation of biodiversity by recreating the Native Pampean Landscape.

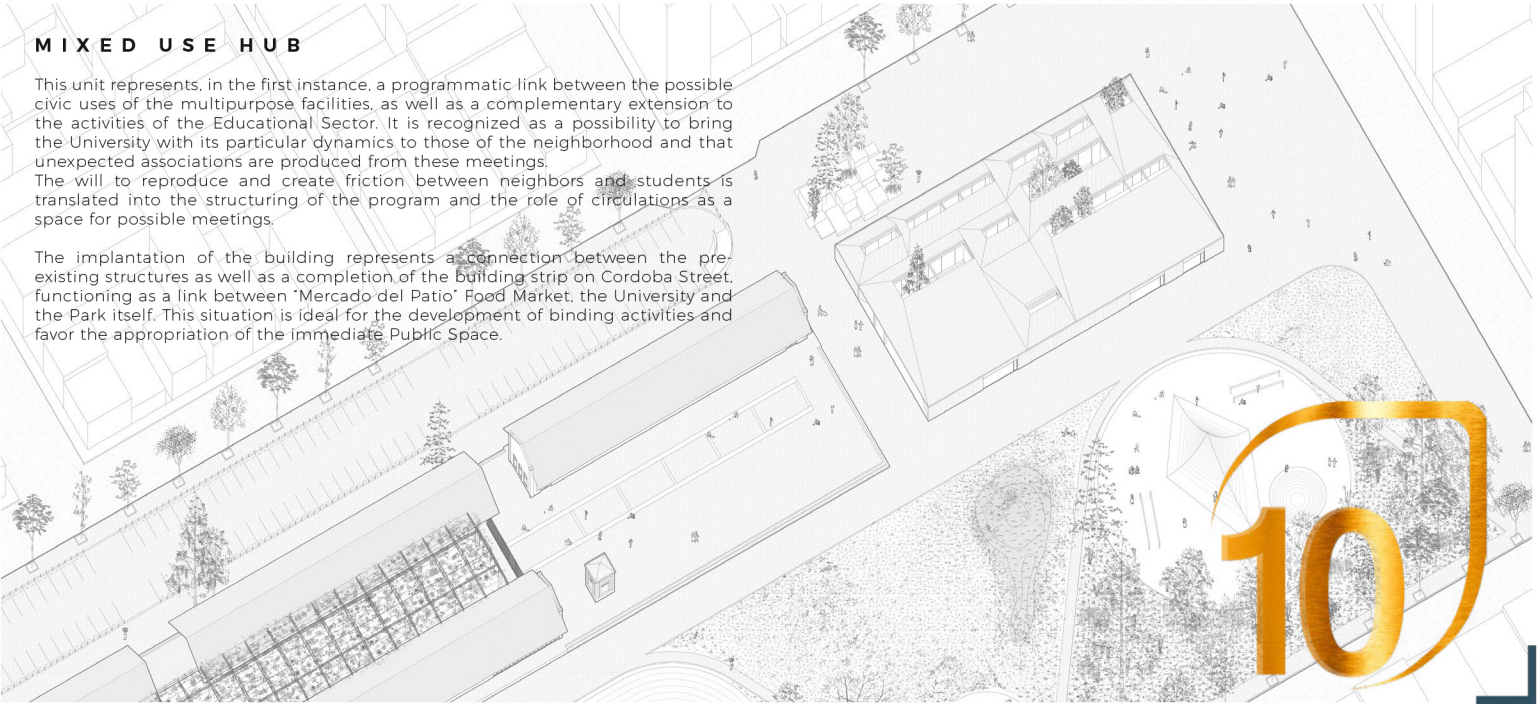
The project stimulates interaction and spontaneous encounters and materializes as a new Hybrid Citizen Space between the Natural and the Urban.

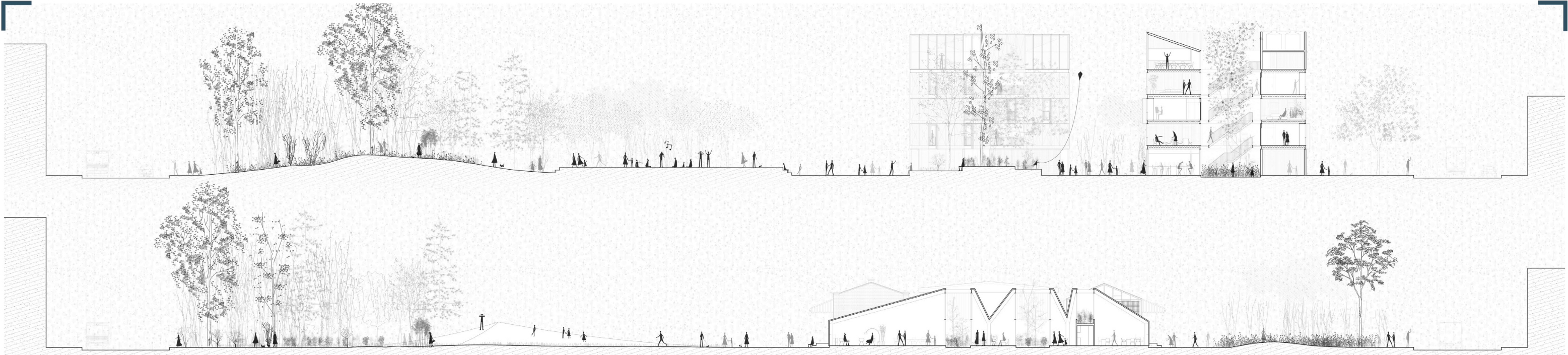


MIXED USE HUB

This unit represents, in the first instance, a programmatic link between the possible civic uses of the multipurpose facilities, as well as a complementary extension to the activities of the Educational Sector. It is recognized as a possibility to bring the University with its particular dynamics to those of the neighborhood and that unexpected associations are produced from these meetings. The will to reproduce and create friction between neighbors and students is translated into the structuring of the program and the role of circulations as a space for possible meetings.

The implantation of the building represents a connection between the pre-existing structures as well as a completion of the building strip on Cordoba Street, functioning as a link between 'Mercado del Patio' Food Market, the University and the Park itself. This situation is ideal for the development of binding activities and favor the appropriation of the immediate Public Space.





FRAGMENTATION AS AN ARCHITECTURAL AND TECHNICAL STRATEGY

Just as software tools require periodic updates to improve services, the system can also assume that condition. Through new accessories and modules, the system can be updated to future ways of living. The open and modular system allows the creation and application of new pieces that give answers to the new and ever changing demands of the contemporary world. But it will not be just technical qualifications.

The project may assume new conditions of habitability and new programmatic developments, it may be revised from the strictly Architectural as from the Landscape and the Urban, giving rise to new spatialities, adapting to new organizational forms of collective coexistence as well as new interfaces of approximation with its surroundings, you could potentially modify its scale and its tectonics.

