

Country / City [New Zealand](#)
University / School [Lincoln University / School of Landscape Architecture](#)
Academic year [2017](#)
Title of the project [Dunedin: A Natural System of Change](#)
Authors [Hayley Swan](#)



100+ years

Key

- 1 Vulnerable coastal edge where rock defences are implemented
- 2 Diverse Marshland edge treatment
- 3 Estuarine environment
- 4 Urban coastline

— — 10 meter contour intervals

- High tide occurs on the Harbour side 1.5 hours earlier than the St Clair coastal side
- Low tide on the Harbour and St Clair sides are approximately the same AMSL
- High tide is approximately 10 meters lower on the Harbour side than St Clair
- New AMSL is at 4.7M



Harbour

IN

OUT

Eel shaped constructed wetlands

Estuarine environment

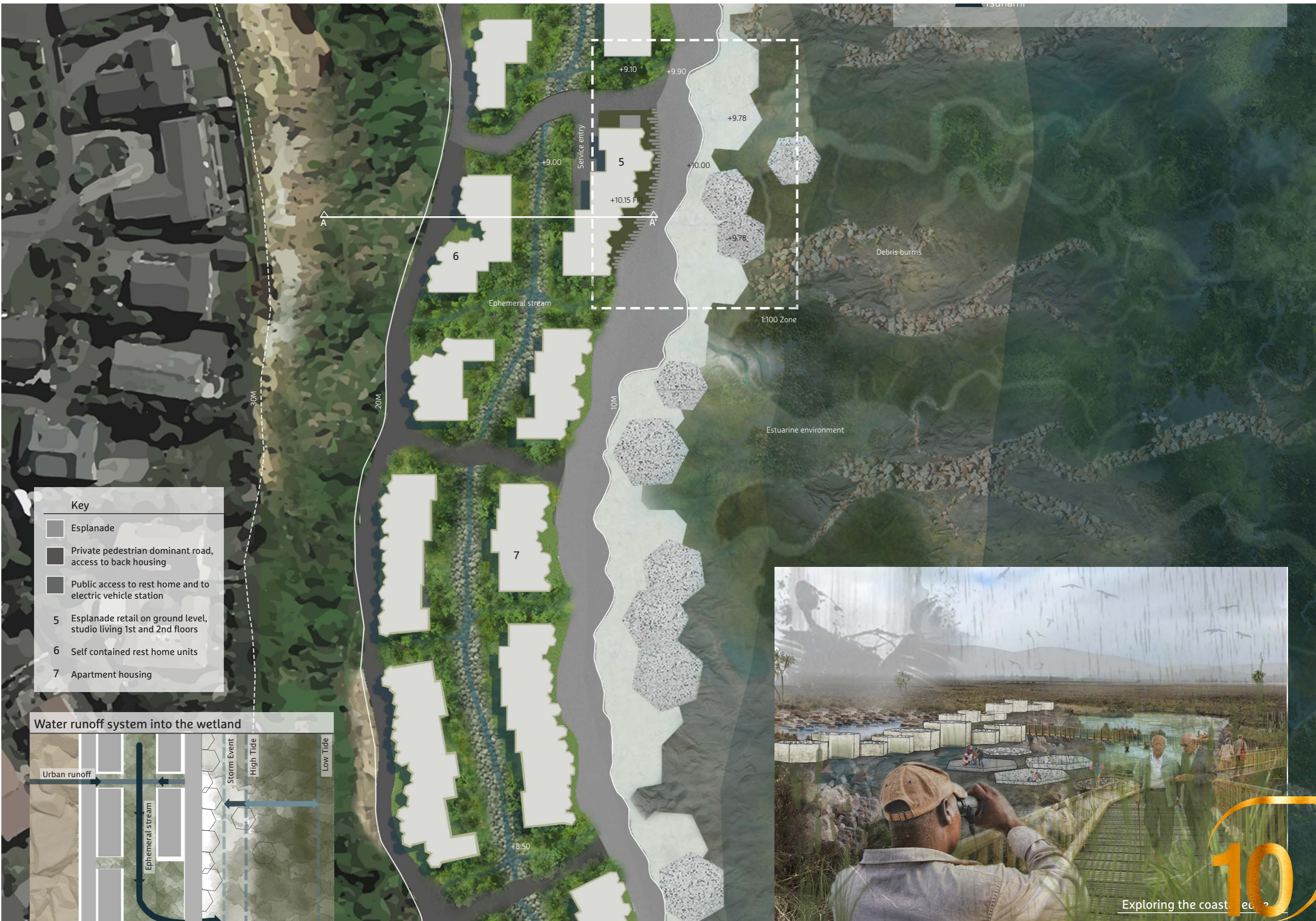
Dunescape

Estuarine environment

Eel shaped constructed wetlands

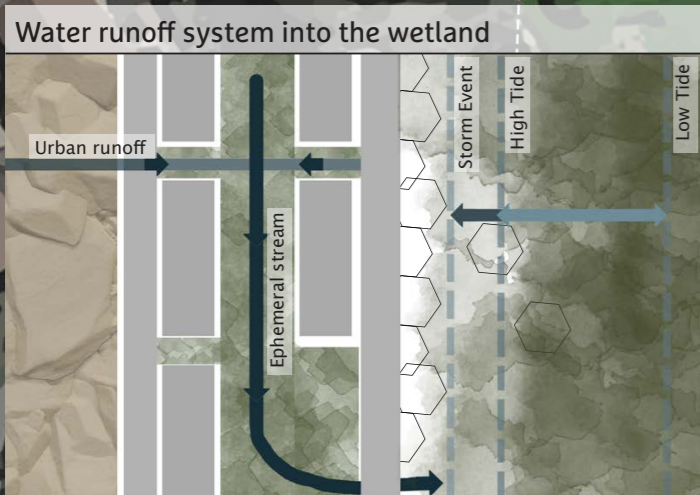
30M 20M 10M

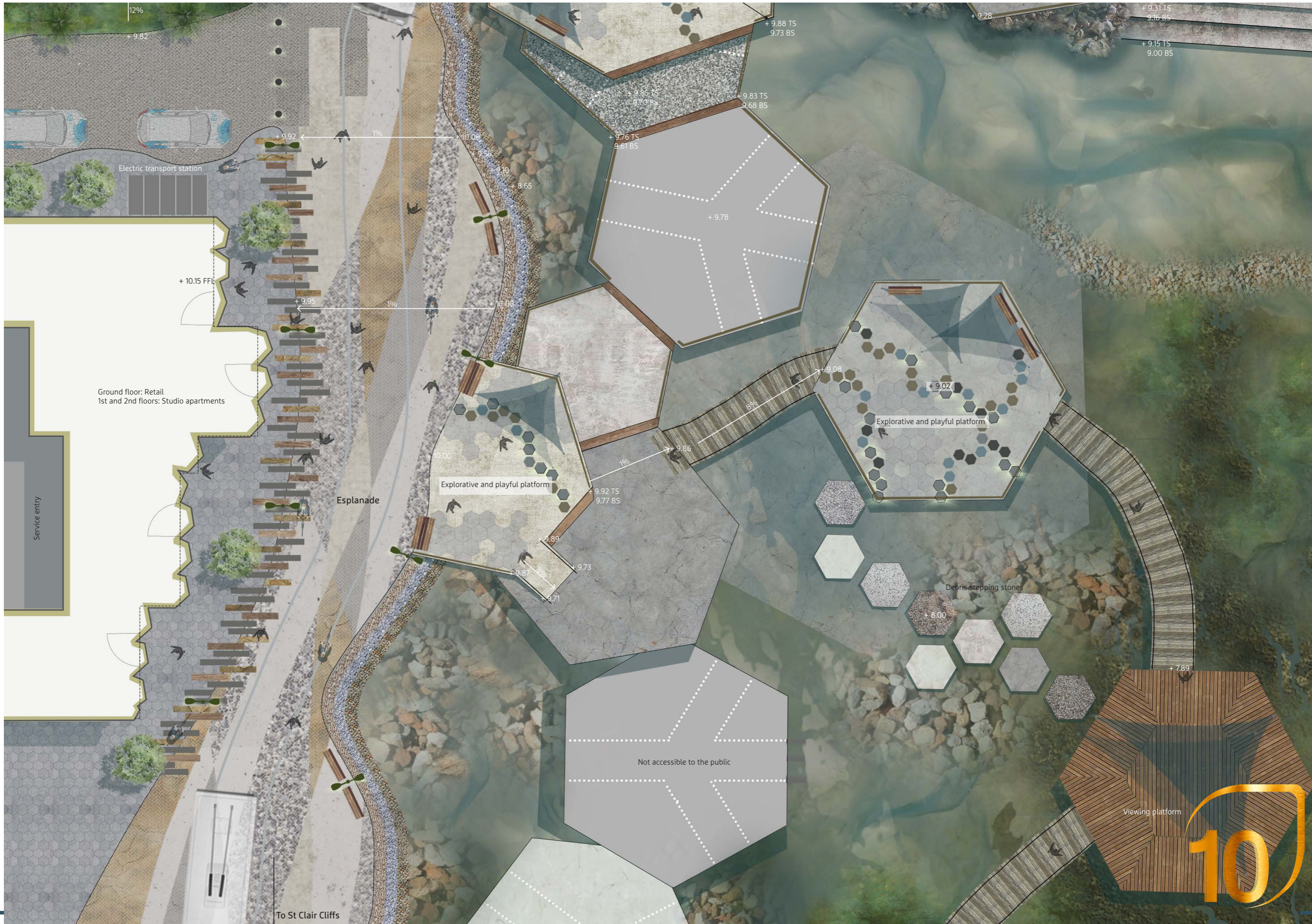




Key

	Esplanade
	Private pedestrian dominant road, access to back housing
	Public access to rest home and to electric vehicle station
5	Esplanade retail on ground level, studio living 1st and 2nd floors
6	Self contained rest home units
7	Apartment housing





12%

+ 9.82

Electric transport station

+ 10.15 FFL

Ground floor: Retail
1st and 2nd floors: Studio apartments

Service entry

Esplanade

Explorative and playful platform

Explorative and playful platform

Debris stepping stones

Viewing platform

Not accessible to the public

To St Clair Cliffs

10



PERFORMATIVE NATURE

Barcelona International Landscape Architecture Biennial

September 2018 **Barcelona**

SCHOOL PRIZE

X International Landscape Architecture Biennial

Máster d'Arquitectura del Paisatge -DUOT - UPC

ETSAB- Escola Tècnica Superior

d'Arquitectura de Barcelona

Avenida Diagonal, 649 piso 5

08028 Barcelona-Spain

TECHNICAL DOSSIER

Title of the project Dunedin: A Natural System of Change
Authors Hayley Swan
Title of the course LASC 409: Major Design
Academic year 2017
Teaching Staff Mick Abbott
Department/Section/Program of belonging School of Landscape Architecture
University/School Lincoln University, New Zealand

An evolving dynamic landscape adapting to environmental changes in response to sea level rise, maintaining a network of ecosystems, thickening Otago's coastlines for future generations managing sustainable coastlines. The communities' resilience post-tsunami will open up an opportunity for an integrated coastline development where both soft and hard strategies play an important role, buffering tidal fluctuations affecting the developed urban coastlines. Unique wildlife and natural spaces are a large part of Dunedin's charm to residents and visitors. It takes a natural disaster for a large community to respond positively to future disaster prone landscapes. Through innovative environmental design, wetland ecosystems will thicken the coastline and buffer the impacts of flooding waters and sea level rise. Also, through looking at nature to reduce erosion along coastal urban developments, the South Dunedin community will embody resilience adapting to coastal change, creating ecologically diverse coastlines, rich in both species and functionality.

For further information

Máster d'Arquitectura del Paisatge -DUOT - UPC

T: + 34 93 401 64 11 / +34 93 552 0842

Contact via email at: biennial.paisatge@upc.edu

Consult the web page <http://landscape.coac.net/>