

Country / City Zhengzhou, Henan province, China  
 University / School Henan Agriculture University  
 Academic year 2017-2018  
 Title of the project Return to nature: outdoor domesticity  
 Authors Hongbo Qiao, Kai Jiao, Zhihao Ma, Ruxia Zhang



# PERFORMATIVE NATURE

Barcelona International Landscape Architecture Biennial

September 2018 **Barcelona**

SCHOOL PRIZE

X International Landscape Architecture Biennial

Máster d'Arquitectura del Paisatge -DUOT - UPC

ETSAB- Escola Tècnica Superior

d'Arquitectura de Barcelona

Avenida Diagonal, 649 piso 5

08028 Barcelona-Spain

## TECHNICAL DOSSIER

Title of the project	Return to nature: outdoor domesticity
Authors	Hongbo Qiao , Kai Jiao , Zhihao Ma, Ruxia Zhang
Title of the course	Introduction to landscape design
Academic year	2017-2018
Teaching Staff	He Jiang , Kun Wang , Zhijun Liu
Department/Section/Program of belonging	Undergraduate of Architecture
University/School	Henan Agriculture University

Written statement, short description of the project in English, no more than 250 words

The Big-small homes is a journey back to nature, which will leave hustle and fast-paced life behind you. Of course you can choose to stay in the house, because different scenery can be seen in the house. You can also walk into the courtyards and experience local characteristics. You can also choose to dive deeper into the mountains and explore more about True nature, to be a "field invisible person."

For further information

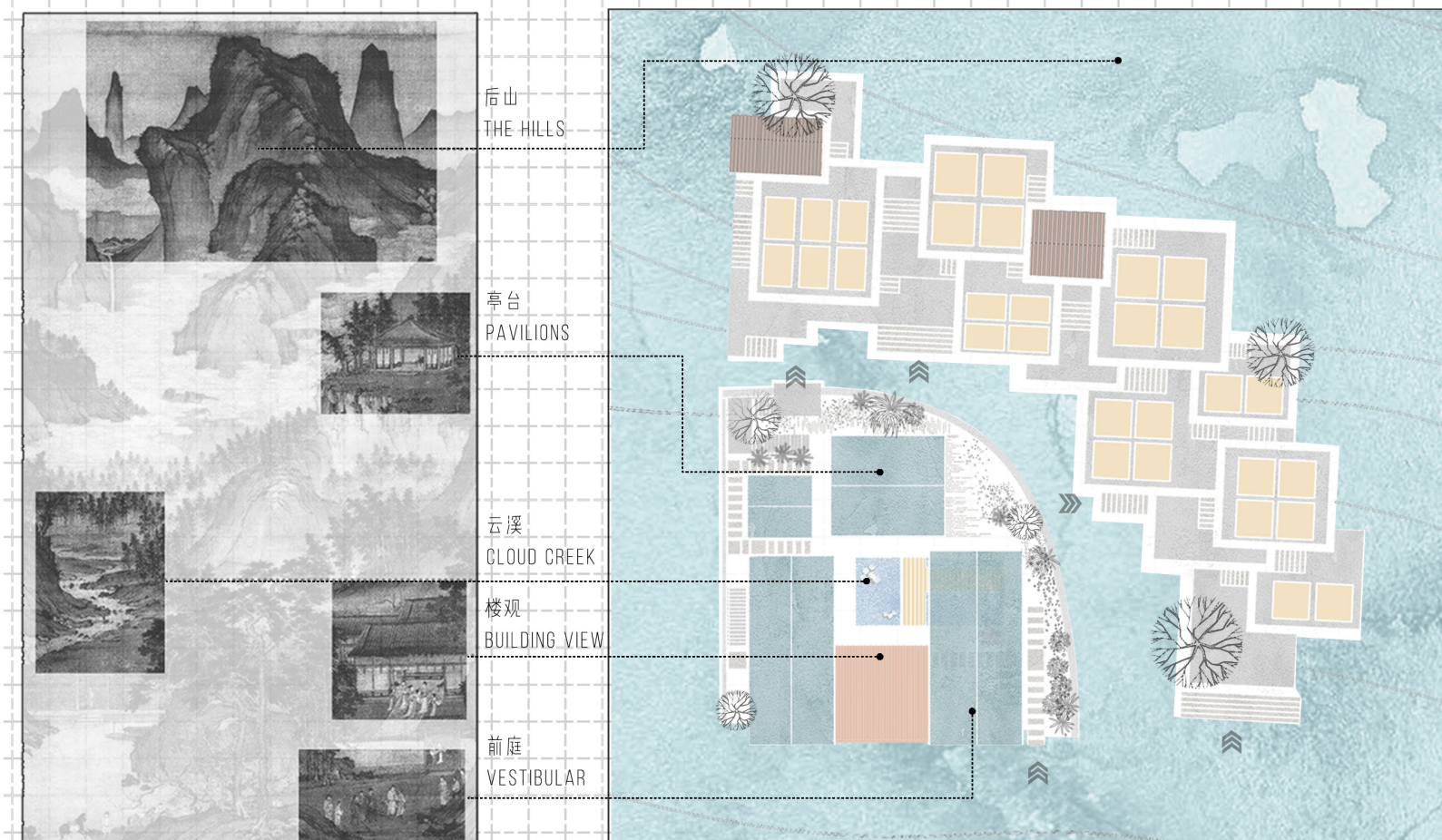
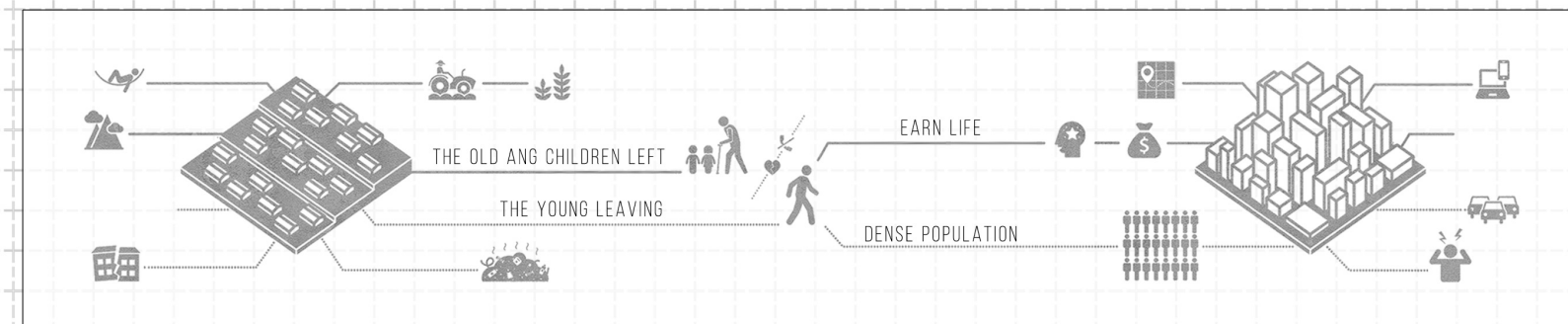
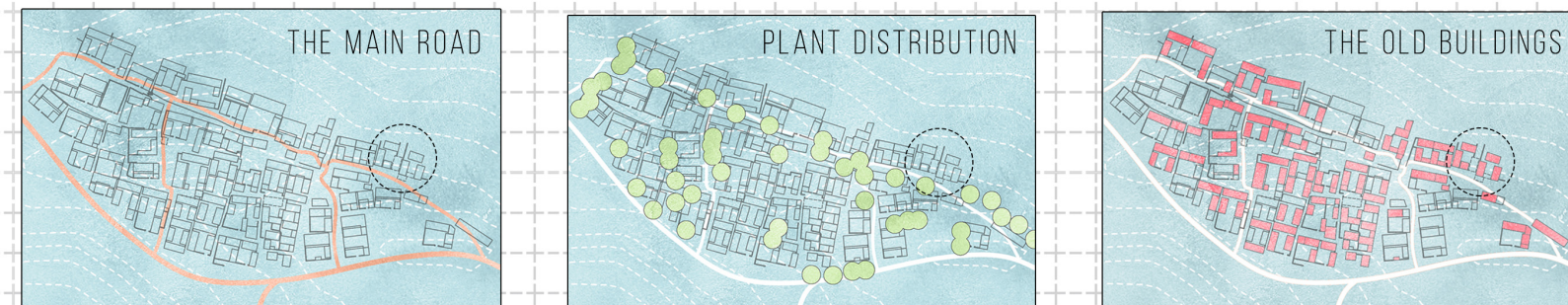
Máster d'Arquitectura del Paisatge -DUOT - UPC

T: + 34 93 401 64 11 / +34 93 552 0842

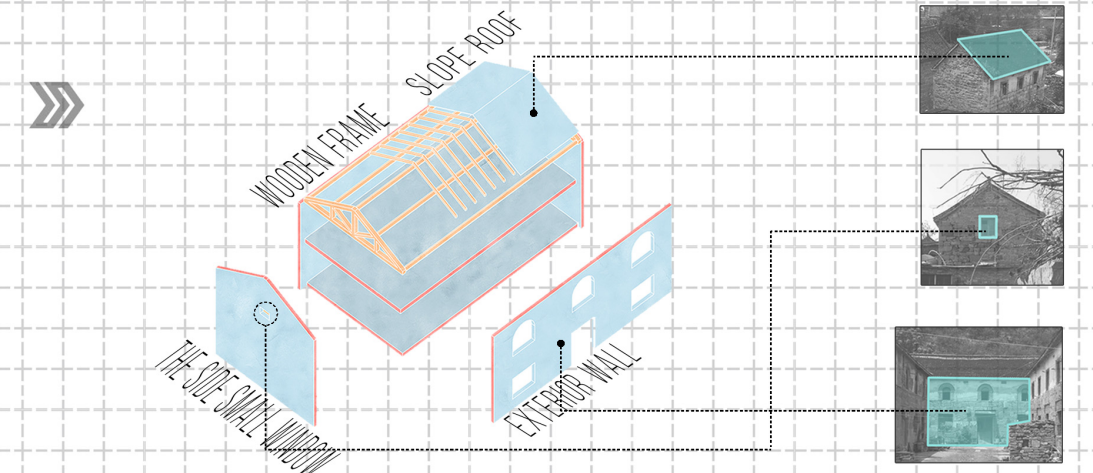
Contact via email at: [biennial.paisatge@upc.edu](mailto:biennial.paisatge@upc.edu)

Consult the web page <http://landscape.coac.net/>

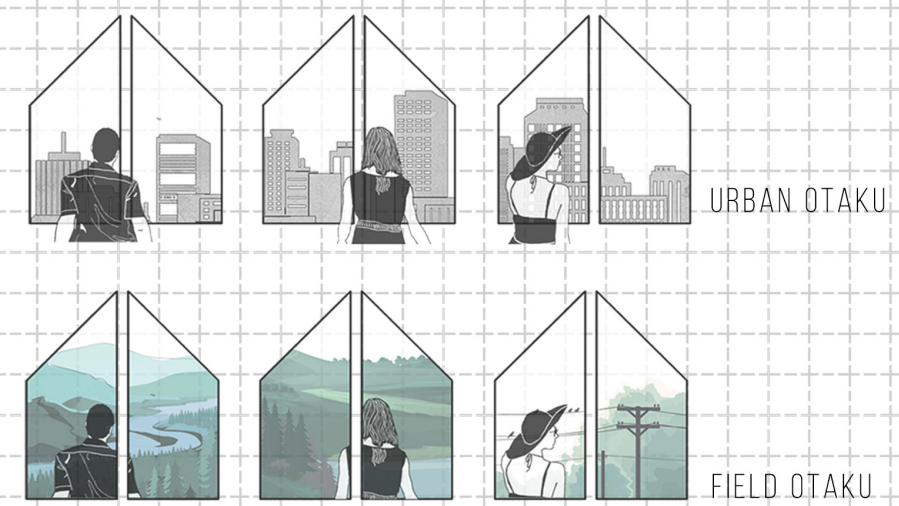




QI COUNTY IS LOCATED IN THE SOUTHWESTERN PART OF HEBI, HENAN PROVINCE, CHINA. ZHAOZHUANG VILLAGE IS LOCATED IN THE WESTERN PART OF QI COUNTY.



WITH THE PROCESS OF URBANIZATION, MORE AND MORE YOUNG PEOPLE ARE CROWDING INTO THE CITY. THE NOISE OF THE CITY AND THE PRESSURE OF THE CITY LIFE FORCE THEM TO STAY AT HOME. THEY ARE OBSESSED WITH ACG, LIKE CHASE DRAMA, AND LOVE BLACK TECHNOLOGY. THEY ARE CALLED "INVISIBLE CITY".



THE "BIG-SMALL HOMES" IS A JOURNEY BACK TO NATURE, WHICH WILL LEAVE HUSTLE AND FAST-PACED LIFE BEHIND YOU. OF COURSE YOU CAN CHOOSE TO STAY IN THE HOUSE, BECAUSE DIFFERENT SCENERY CAN BE SEEN IN THE HOUSE. YOU CAN ALSO WALK INTO THE COURTYARDS AND EXPERIENCE LOCAL CHARACTERISTICS. YOU CAN ALSO CHOOSE TO DIVE DEEPER INTO THE MOUNTAINS AND EXPLORE MORE ABOUT TRUE NATURE, TO BE A "FIELD INVISIBLE PERSON."

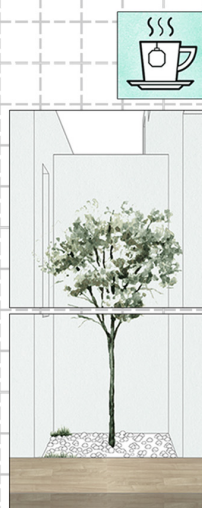
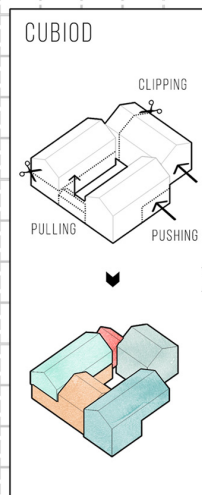




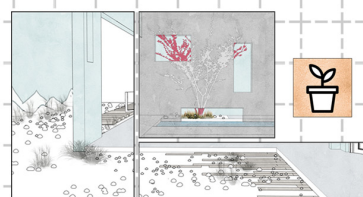
小宅宅于屋，大宅宅于野

## BIG SMALL HOUSE RETURN TO NATURE: OUTDOOR DOMESTICITY

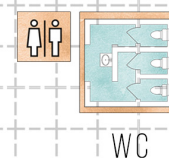
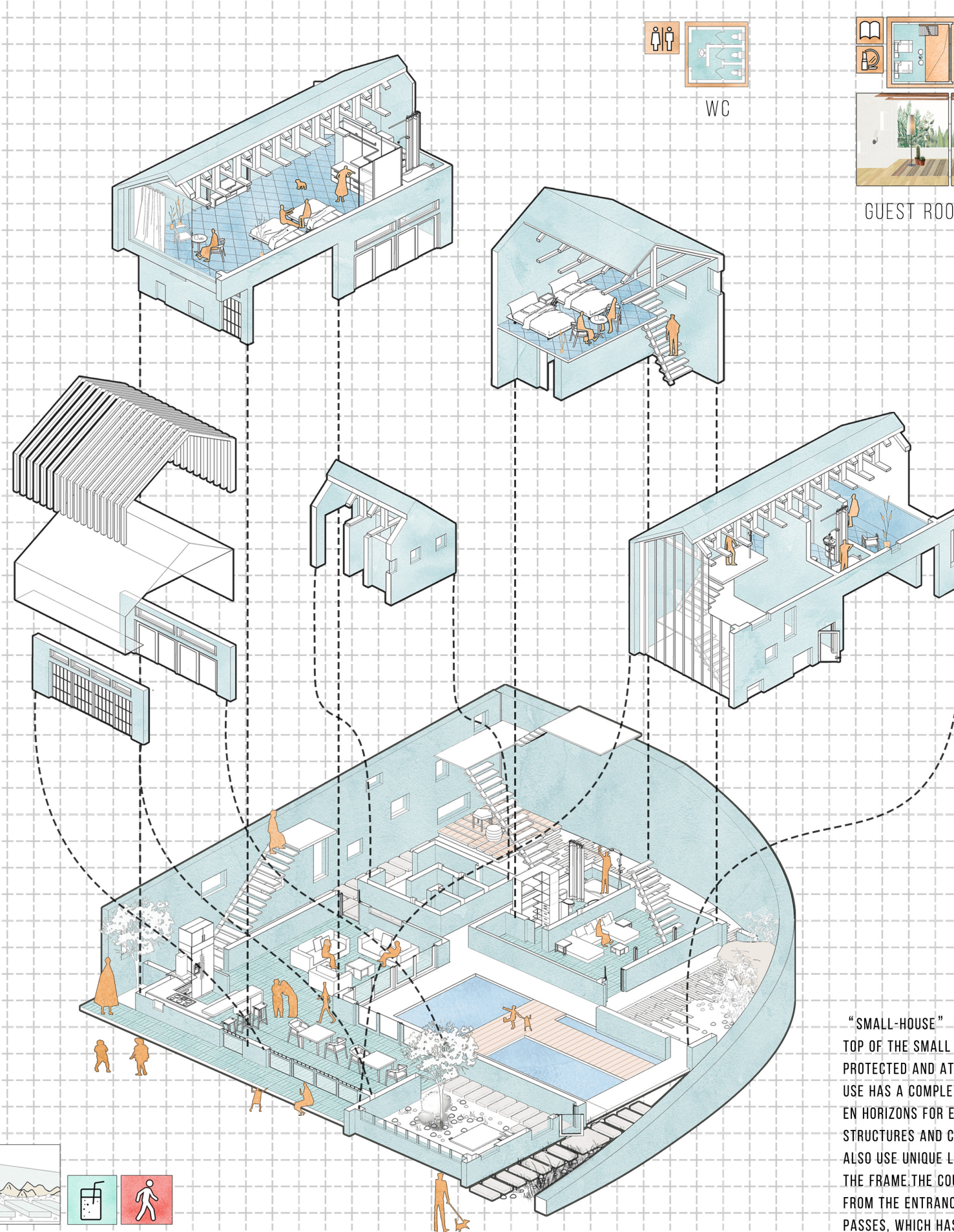
THE "BIG-HOUSE" INDICATES COURTYARD AND SURROUNDINGS. THE "BIG-SMALL HOME" USE GLASS WINDOWS DESIGN AND CREATED A SPACE FOR THE CMUNICATION BETWEEN THE STREETS AND THE COURTYARD. AT THE SAME TIME, A PLATFORM FOR PEOPLE TO REST AND DO ACTIVITIES WAS DESIGNED TO STRENGTHEN THE LINKS BETWEEN THE STREETS AND THE COURTYARD. THE EXTERIOR WALLS OF THE BUILDING USE LOCAL CHARACTERISTIC ELEMENTS AND OPEN SMALL WINDOWS ON IT. THE HEIGHT OF THE BUILDING WAS KEPT TO INTEGRATE BETTER INTO THE LOCAL ENVIRONMENT. THE TWO SIDES OF THE BUILDING ARE BACKED BY MOUNTAINS. THERE ARE TERRACES AND FRUIT TREES ON THE MOUNTAINS. THEY CAN BE ACCESSED DIRECTLY FROM THE INSIDE OF THE INNER SPACE. THE INTEGRATED BUILDINGS ARE IN THE NATURE, THAT IS, THE BIG HOUSE BUILDING IN THE WILD.



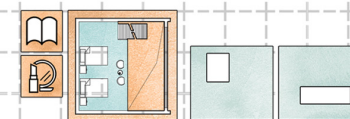
YARDSIDE



FRONT YARD



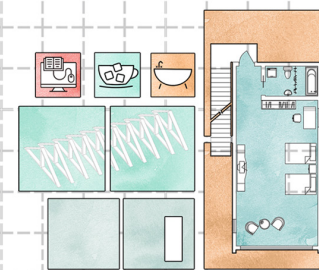
WC



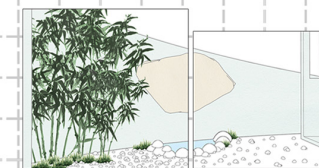
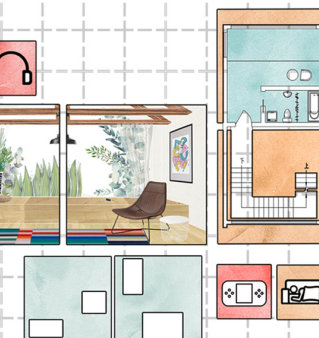
GUEST ROOM



GUEST ROOM

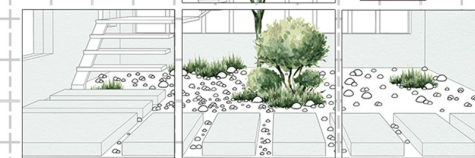


GUEST ROOM



QUIET YARD

IN YARD

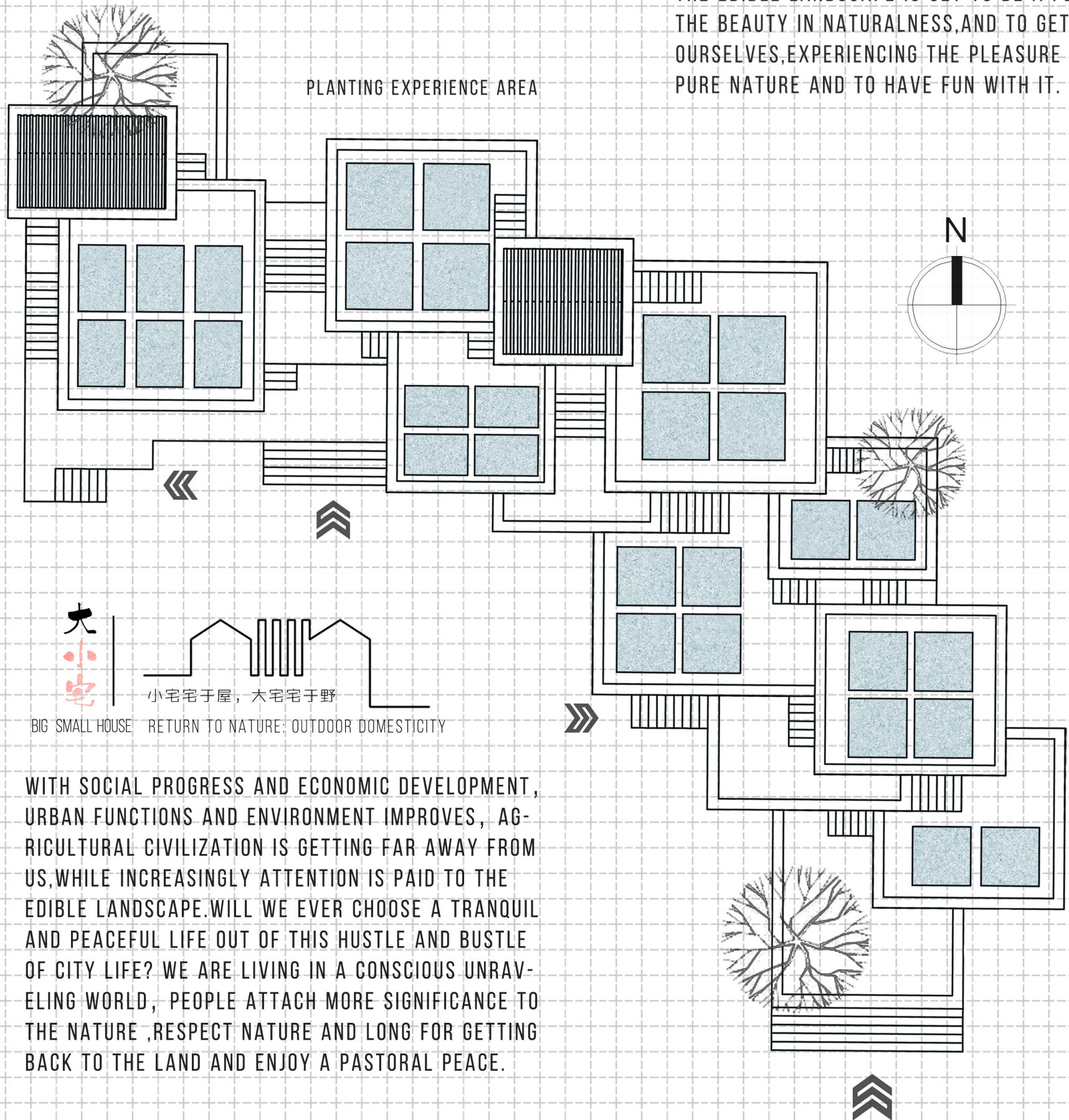
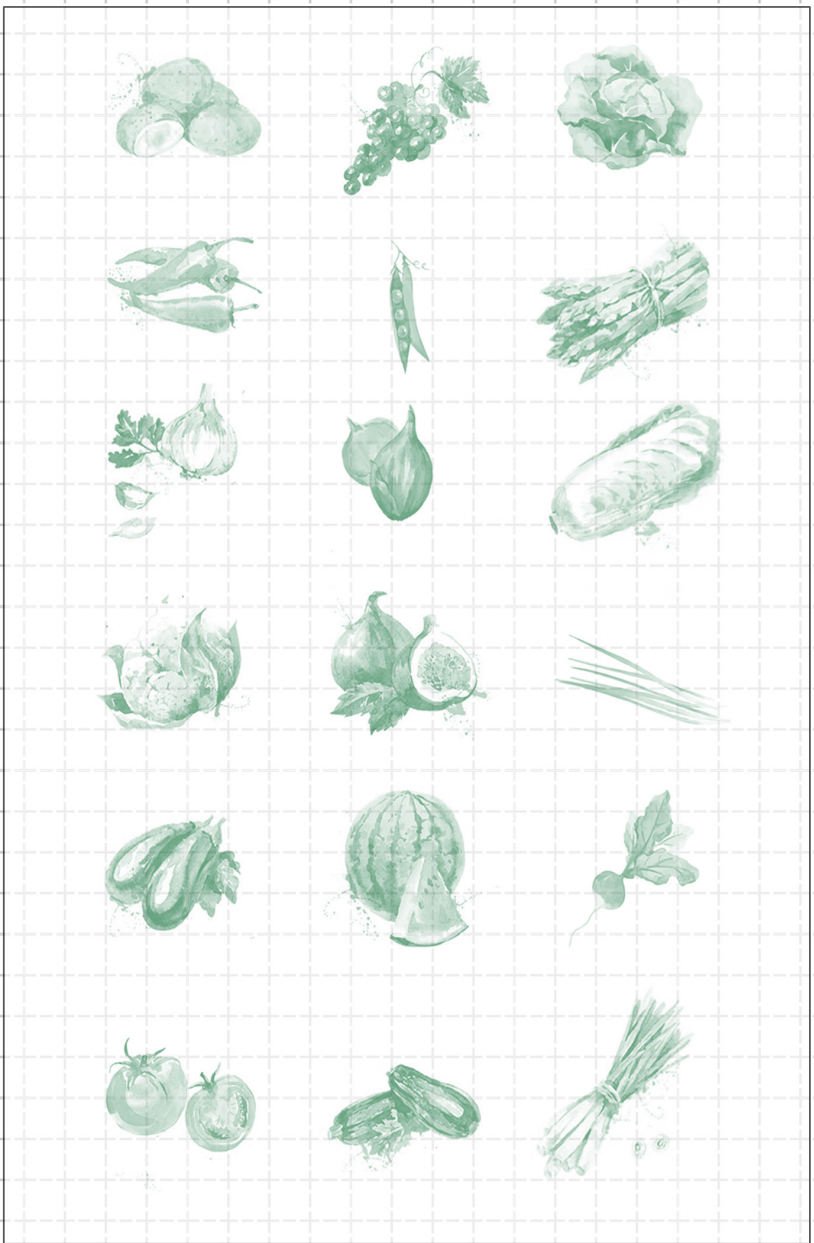


"SMALL-HOUSE" INDICATES HOUSES AND COURTYARDS. THE THREE SMALL HOUSES ON THE TOP OF THE SMALL HOUSE ARE SLOPING ROOF STRUCTURES. THE OLD ROOF STRUCTURE WERE PROTECTED AND AT THE SAME TIME, NEW MATERIALS ARE USED TO IMPROVE THEM. EACH HOUSE HAS A COMPLETE FLOOR-TO-CEILING WINDOW TO INCREASE INDOOR LIGHTING AND BROADEN HORIZONS FOR ENHANCING THE LIVING EXPERIENCE. AND ALL THREE HOUSES HAVE UNIQUE STRUCTURES AND COURTYARDS, WHICH PROVIDE ALTERNATIVE LIVING EXPERIENCE. THE HOUSE ALSO USE UNIQUE LOCAL WINDOWS TO ASSIST IN THE LIGHTING AND ALSO PLAY THE ROLE OF THE FRAME. THE COURTYARD IS LANDSCAPED IN CCORDANCE WITH THE LANDSCAPE PAINTINGS. FROM THE ENTRANCE TO THE COURTYARD, THERE ARE COURTYARDS IN THE PLACE WHERE IT PASSES, WHICH HAS A CERTAIN SENSE OF DEPTH. THE HOUSE IS SURROUNDED BY COURTYARDS, WHERE ONE CAN SEE DIFFERENT COURTYARDS AND ENJOY DIFFERENT PERSPECTIVES, THAT IS, SMALL HOMES AND HOUSES.



THE EDIBLE LANDSCAPE IS SET TO BE A PERFECT PLACE TO INTEGRATE OURSELVES WITH NATURE, EMBRACE THE BEAUTY IN NATURALNESS, AND TO GET CITIZENS OUT OF THE FAST-MOVING LIFE. BY DOING PLANTINGS OURSELVES, EXPERIENCING THE PLEASURE OF GROWING, AND HARVEST OF JOY TO GET A GLIMPSE OF THE PURE NATURE AND TO HAVE FUN WITH IT.

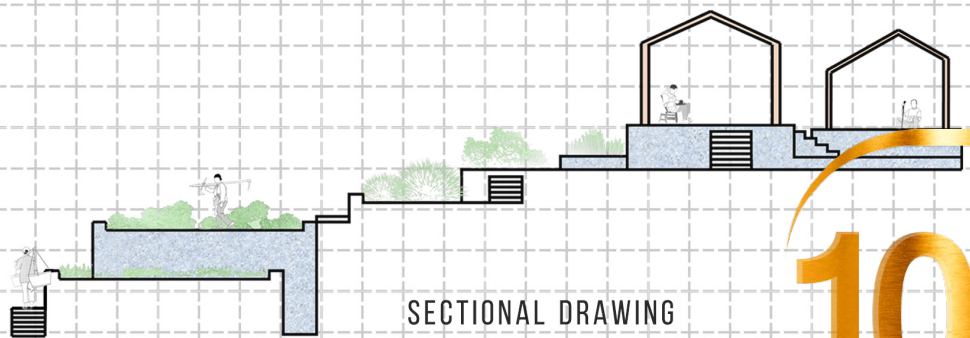
FRUITS AND VEGETABLES



小宅宅于屋，大宅宅于野

BIG SMALL HOUSE RETURN TO NATURE: OUTDOOR DOMESTICITY

WITH SOCIAL PROGRESS AND ECONOMIC DEVELOPMENT, URBAN FUNCTIONS AND ENVIRONMENT IMPROVES, AGRICULTURAL CIVILIZATION IS GETTING FAR AWAY FROM US, WHILE INCREASINGLY ATTENTION IS PAID TO THE EDIBLE LANDSCAPE. WILL WE EVER CHOOSE A TRANQUIL AND PEACEFUL LIFE OUT OF THIS HUSTLE AND BUSTLE OF CITY LIFE? WE ARE LIVING IN A CONSCIOUS UNRAVELING WORLD, PEOPLE ATTACH MORE SIGNIFICANCE TO THE NATURE, RESPECT NATURE AND LONG FOR GETTING BACK TO THE LAND AND ENJOY A PASTORAL PEACE.



SECTIONAL DRAWING





Mentioned gardens, people may think of are the arrangement of colorful plants, =a variety of plant shapes.  
However, such landscaping will inevitably lead to visual fatigue. The purpose of this design is to return to the most primitive pastoral scenery.  
The transformation is divided into two parts, one is the landscape treatment at the architectural level and the other is the treatment of the surrounding environment.  
The use of crops instead of ornamental plants gives people a refreshing feeling.

Country / City Zhengzhou , Henan province , China

University / School Henan Agriculture University

Academic year 2017-2018

Title of the project Return to the rural

Authors Xiaochen Zhao , Jiapeng Wang , Xiaoyu Guo , Heng Song , Shuxian Li





# PERFORMATIVE NATURE

Barcelona International Landscape Architecture Biennial

September 2018 **Barcelona**

SCHOOL PRIZE

X International Landscape Architecture Biennial

Máster d'Arquitectura del Paisatge -DUOT - UPC

ETSAB- Escola Tècnica Superior

d'Arquitectura de Barcelona

Avenida Diagonal, 649 piso 5

08028 Barcelona-Spain

## TECHNICAL DOSSIER

Title of the project ..... Return to the rural  
Authors ..... Xiaochen Zhao , Jiapeng Wang , Xiaoyu Guo , Heng Song , Shuxian Li  
Title of the course ..... Introduction to landscape design  
Academic year ..... 2017-2018  
Teaching Staff ..... Zhijun Liu , He Jiang , Kun Wang  
Department/Section/Program of belonging ..... Undergraduate of Architecture  
University/School ..... Henan Agriculture University

Written statement, short description of the project in English, no more than 250 words

.....The purpose of this design is to return to the most primitive pastoral scenery. The transformation is  
.....divided into two parts, one is the landscape treatment at the architectural level and the other is the  
.....treatment of the surrounding environment. The use of crops instead of ornamental plants gives people  
.....a refreshing feeling.

For further information

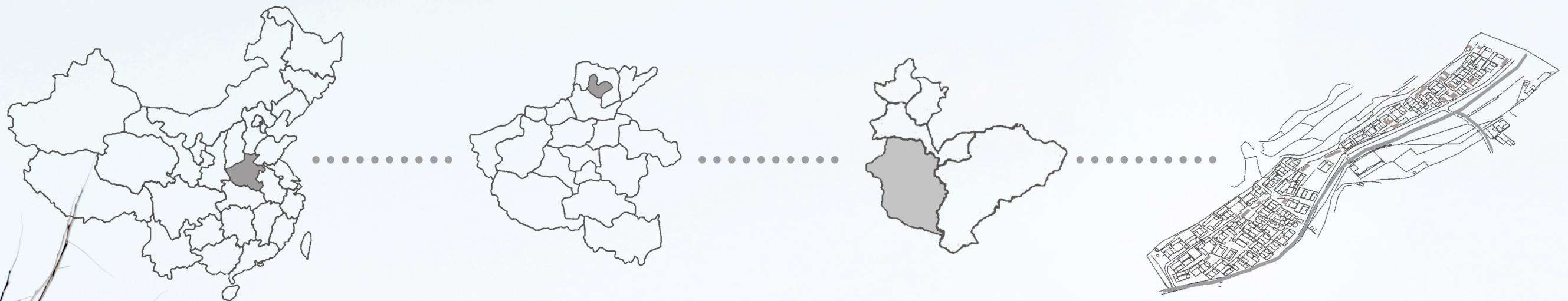
**Máster d'Arquitectura del Paisatge -DUOT - UPC**

T: + 34 93 401 64 11 / +34 93 552 0842

Contact via email at: [biennial.paisatge@upc.edu](mailto:biennial.paisatge@upc.edu)

Consult the web page <http://landscape.coac.net/>





Mentioned gardens, people may think of are the arrangement of colorful plants, =a variety of plant shapes.  
However, such landscaping will inevitably lead to visual fatigue. The purpose of this design is to return to the most primitive pastoral scenery.

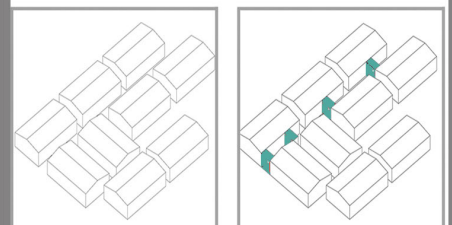
The transformation is divided into two parts, one is the landscape treatment at the architectural level and the other is the treatment of the surrounding environment.  
The use of crops instead of ornamental plants gives people a refreshing feeling.



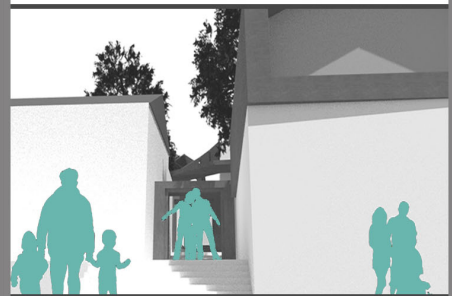




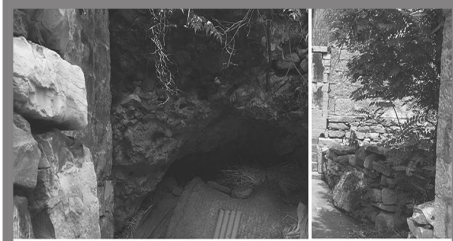
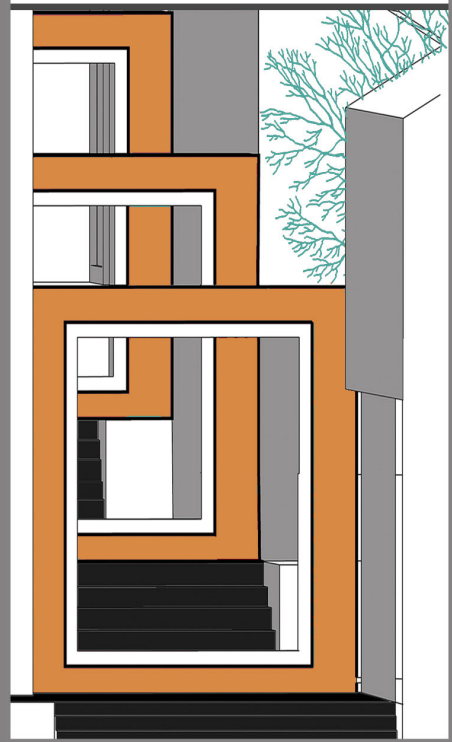
## Mixed and Disorderly



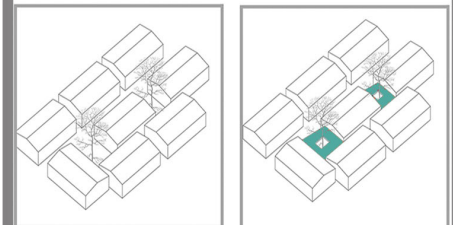
doorframe of the same shape  
increase the sense of sequence and guide people to enter



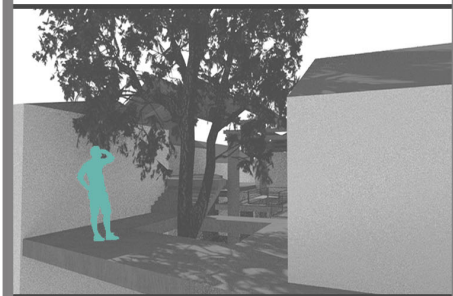
framed landscape



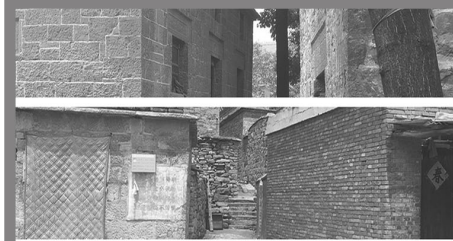
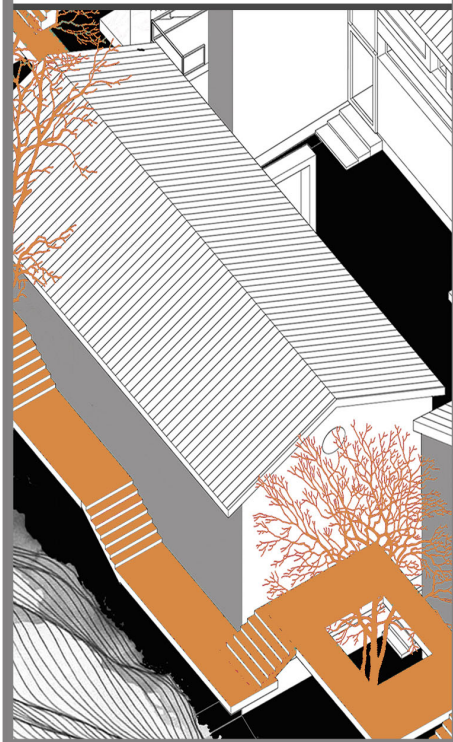
## Absence and Landscape



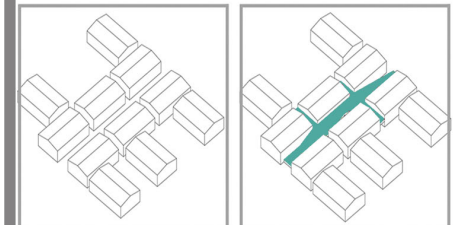
delamination of the garden  
the lower layer landscape  
the upper layer communication space



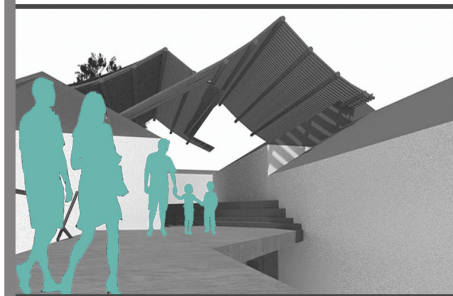
make tree cross the corridor



## No interest in space



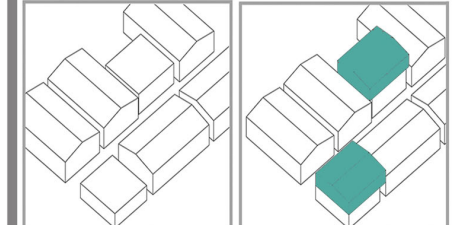
turn two dimensions into 3D  
it increases both the area  
and the interest



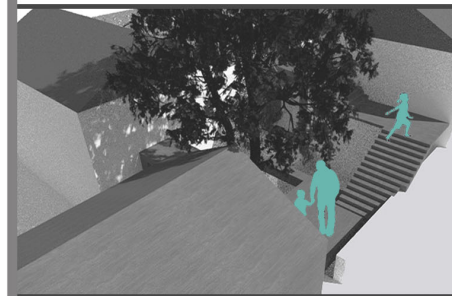
building an air corridor



## No in local feature



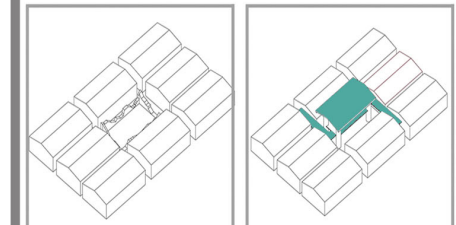
reconstruction of the building  
the use of modern techniques added to  
increase the area of use



construct



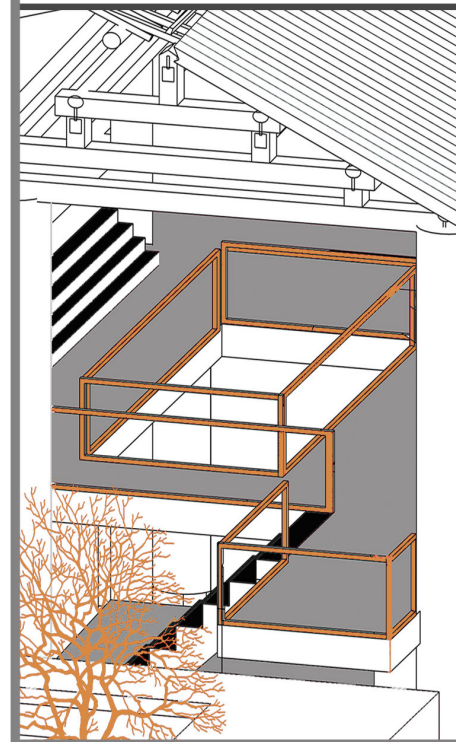
## Lack of communication



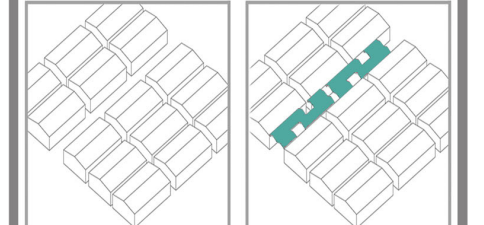
consturction of air space  
it does not affect the  
area of use and it is beautiful and practical



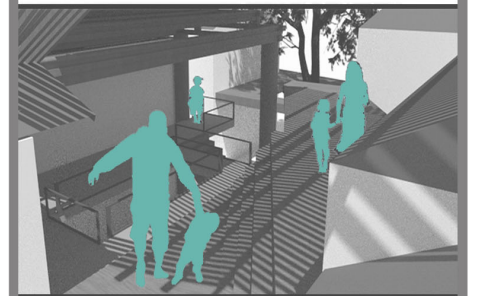
building interlayer



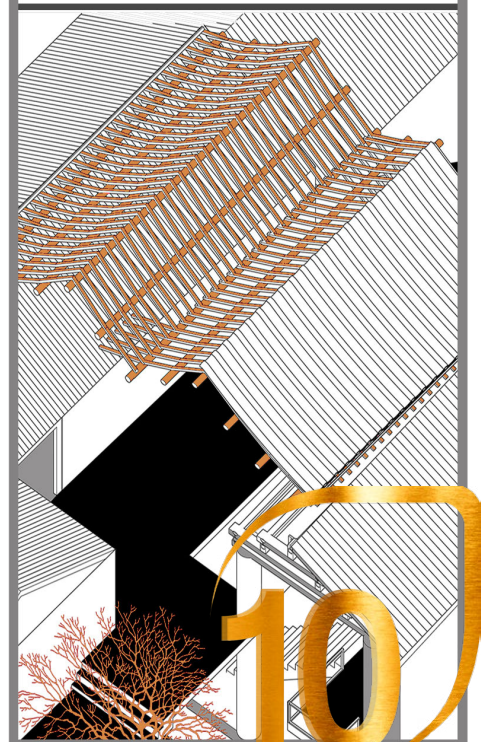
## Destruction of house



rebuild the destroyed building  
connect the independent courtyard, increase  
the communication



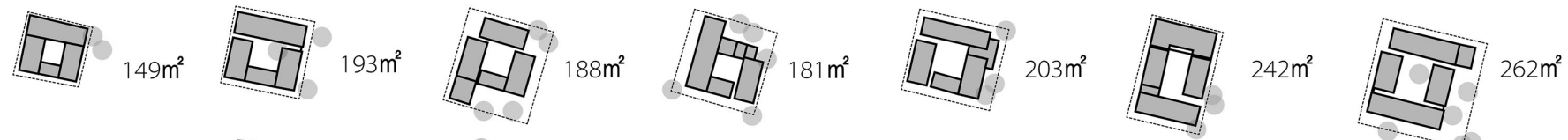
put up a shed





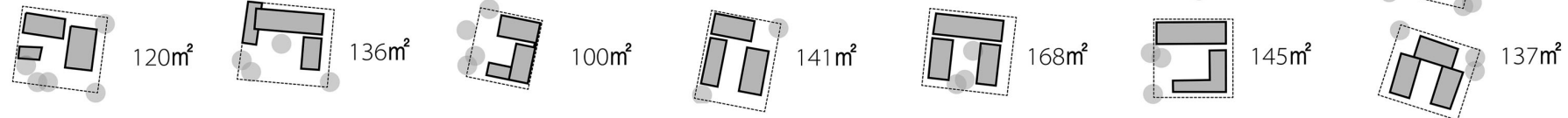
## Si he yuan

Courtyard surrounded by four houses.



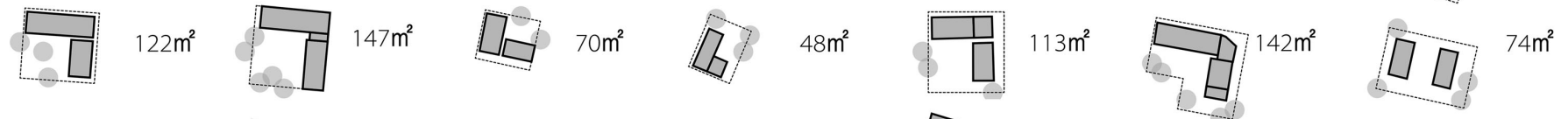
## San he yuan

A yard enclosed by three houses.



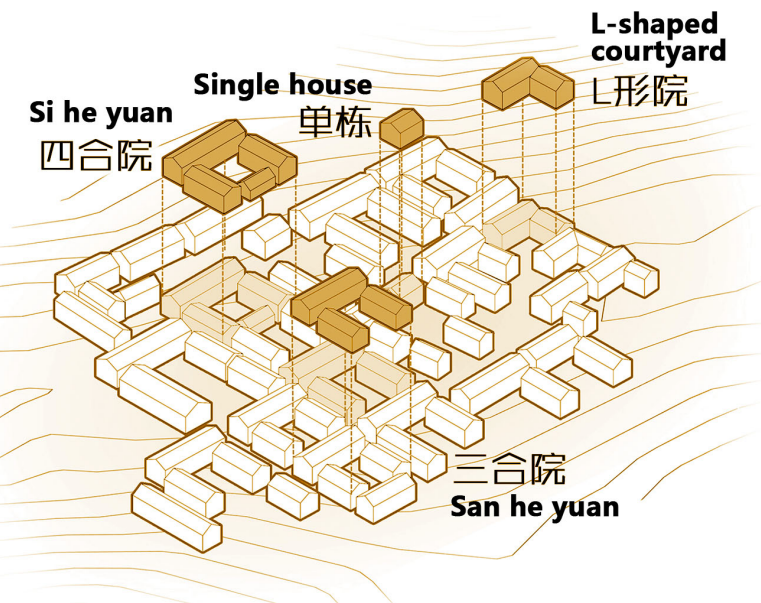
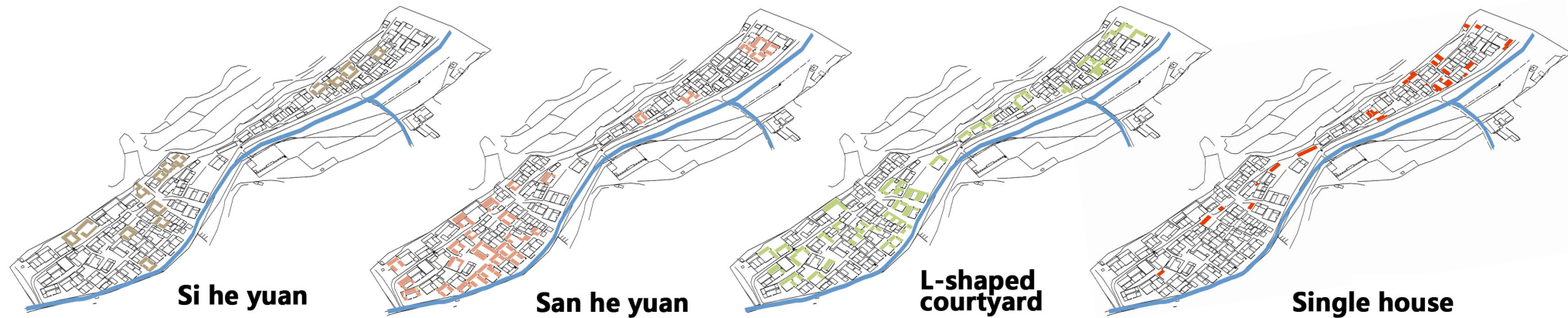
## L-shaped

A yard enclosed by two houses.



## Single house

A house is set alone in the yard



- We divided the entire village's courtyard into four parts: **Si he yuan**, **San he yuan**, **L-shaped courtyard**, and **the Single house**, which are divided into landscape planning for these four types of courtyards.
- Plants use four crops, **wheat**, **rape**, **pepper** and **pomegranate**. These four crops are **unique to the local area** and are full of scenery throughout the four seasons. Such treatment will not cause landscape faults in the entire village during the **four seasons**.

## Single house

This space is an open space and requires a large area of landscape crops.

Therefore, wheat is used. When the wheat matures in summer, all of them are yellow, and there will be wind and wheat waves.



## L-shaped courtyard

This type of courtyard is more closed to the space than a single house.

Therefore, the use of rapeseed, rapeseed bloom in the spring, in the spring when the residents open the door is a sea of flowers.



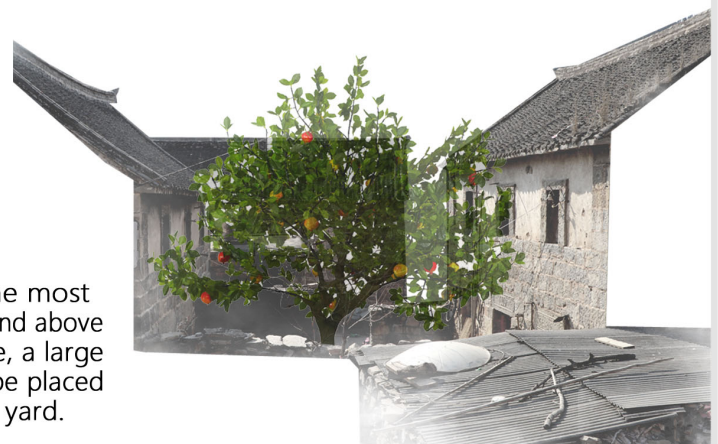
## San he yuan

The courtyard is relatively closed in space, so it is not suitable for making large-scale land crops. With Chaotian peppers, the crop matures in the autumn with a red fire.



## Si he yuan

The courtyard is the most closed crops above and above the space. Therefore, a large tree was chosen to be placed in the middle of the yard.



**Brassikakapestris**: annual herb, 60~80cm high, flowering period from January to March. At the time of flowering, a golden, nectar in the pollen attracted the butterflies and bees to dance between the flowers, and the rich floral fragrance was intoxicating.



**Triticum aestivum L.**: Monocotyledonous plants, grasses, which can be landscaped when planted. Its caryopsis is one of the staplefoods of human beings. After grinding into flour, it can make bread, bread, biscuits, noodles and other foods.



**Capsicum annum var. conoides**: Leaves 4-7 cm long, ovate. Pedicel erect, flowers slightly divergent, corolla white or purple. Fruit stems and fruits are erect, fruit is small, conical, red or purple after ripening, extremely spicy.



**Punica granatum**: deciduous shrub or small tree, 2 to 7 meters high, beautiful trees, flowering from June to July, fruiting period from September to October, considerable flowers, fruit, view of the tree. When the flowers are bright, the flowers are red and the flowers are bright.



## ● DESIGN ANALYSIS DIAGRAM



Infiltration of vegetation

By means of "infiltration", the vegetation on the north side of the mountain is introduced into the village to solve the problem of building and plant confrontation caused by the less green area in the village.



Communication space

By dismantling severely damaged and uncoordinated buildings, we can make room for public communication activities. Public space serves around the surrounding even the whole village.



Road generation

We will improve the village road network system and divide the roads into carriageways, pedestrian walkways and landscape corridors along the foot of the mountain.

## ● VIEW EFFECT DIAGRAM



Active field



Greenland along the river

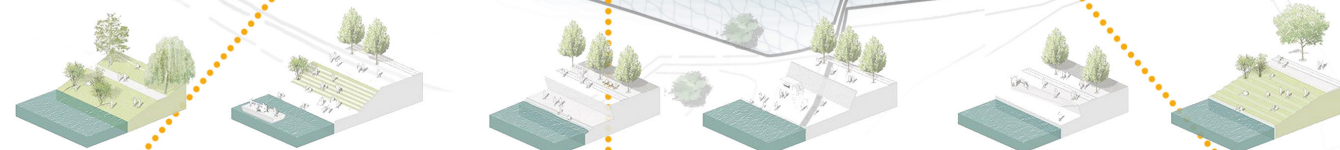


Street green space



Concentrated green space

## ● LANDSCAPE CONSTRUCTION ALONG THE RIVER



## ● TOTAL PLANE



Country / City Zhengzhou , Henan province , China

University / School Henan Agriculture University

Academic year 2017-2018

Title of the project Communication in nature

Authors Tian Yuan , Chuya Wei





# PERFORMATIVE NATURE

Barcelona International Landscape Architecture Biennial

September 2018 **Barcelona**

SCHOOL PRIZE

X International Landscape Architecture Biennial

Máster d'Arquitectura del Paisatge -DUOT - UPC

ETSAB- Escola Tècnica Superior

d'Arquitectura de Barcelona

Avenida Diagonal, 649 piso 5

08028 Barcelona-Spain

## TECHNICAL DOSSIER

Title of the project	Communication in nature
Authors	Tian Yuan , Chuya Wei
Title of the course	Introduction to landscape design
Academic year	2017-2018
Teaching Staff	Kun Wang , Zhijun Liu , He Jiang
Department/Section/Program of belonging	Undergraduate of Architecture
University/School	Henan Agriculture University

Written statement, short description of the project in English, no more than 250 words

The technology of the information age has brought us the convenience of life. Unconsciously, everyone seems to be trapped in their own small space by technology products. We communicate less with others and less with our natural environment. Technology is becoming more and more incredible. What we need is not just a reliance on technology, but a return to the community, to nature...

For further information

**Máster d'Arquitectura del Paisatge -DUOT - UPC**

T: + 34 93 401 64 11 / +34 93 552 0842

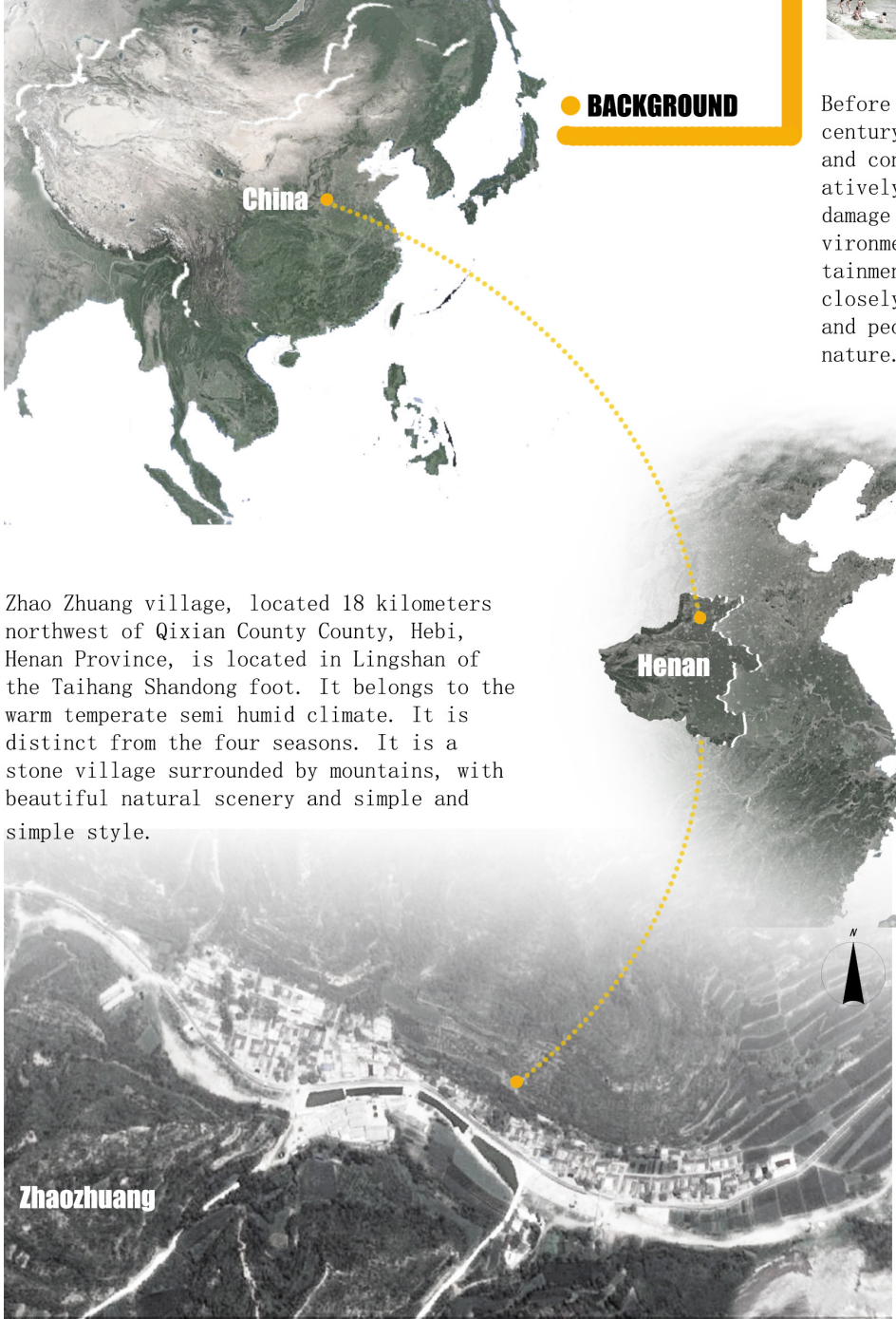
Contact via email at: [biennial.paisatge@upc.edu](mailto:biennial.paisatge@upc.edu)

Consult the web page <http://landscape.coac.net/>



# COMMUNICATION IN NATURE 1

## location



Zhao Zhuang village, located 18 kilometers northwest of Qixian County County, Hebi, Henan Province, is located in Lingshan of the Taihang Shandong foot. It belongs to the warm temperate semi humid climate. It is distinct from the four seasons. It is a stone village surrounded by mountains, with beautiful natural scenery and simple and simple style.

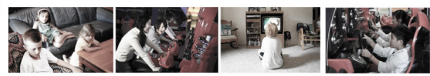
## BACKGROUND



Before the 80s of last century, China's economy and construction were relatively backward, and less damage to the natural environment. People's entertainment activities are closely related to nature, and people interact with nature.



Between 80s and twenty-first Century, China is still in a backward state. People are more interested in entertainment by means of tools.



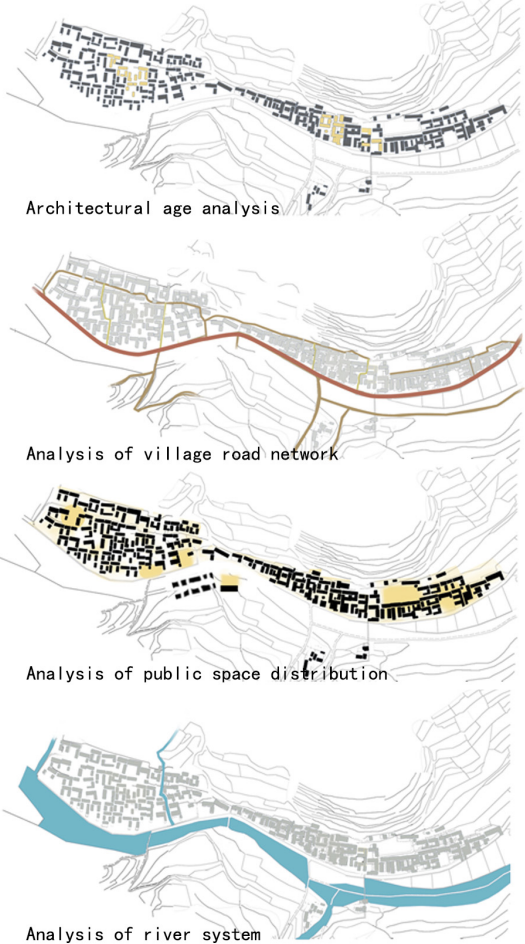
After entering the twenty-first Century, people's entertainment depended on electronic equipment, and they were separated from the outside world. Communication between people gradually decreased.

Now we rely on technology, life and entertainment, lack of communication with people and nature.



What should we do in the future?

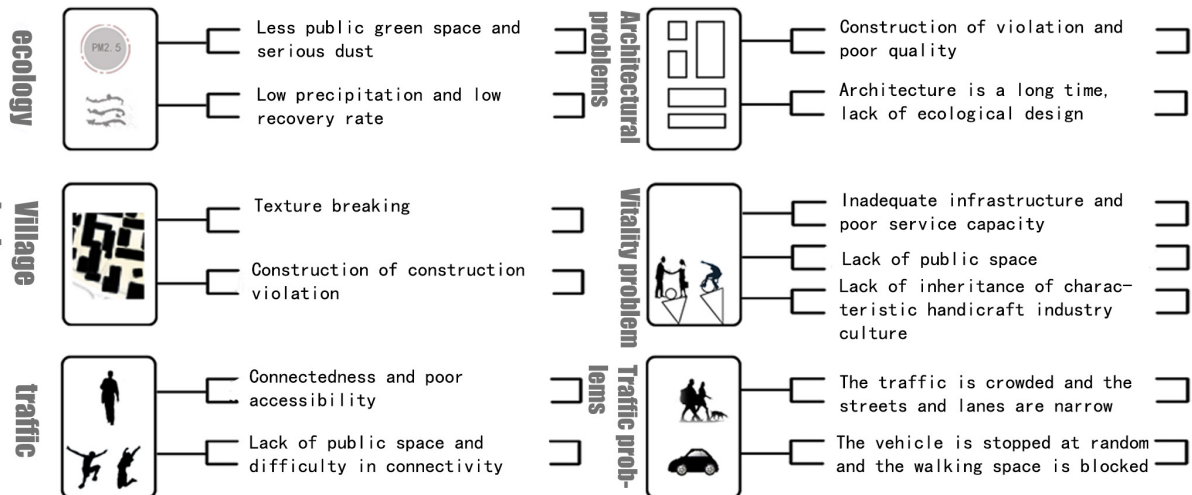
## PRESENT SITUATION ANALYSIS



## ANALYSIS OF RURAL ACTIVITIES



Juveniles	0-18 years	Aged	65+ years	Family	3-5 person	Group	3+ person	Farmer
Juveniles are active and active, with great demand for sports venues.		There are many elderly people in rural areas, and lack of communication with people.		The family needs a good venue for collective activity.		The group needs more space for interaction.		More vegetables and crops are planted in the countryside.



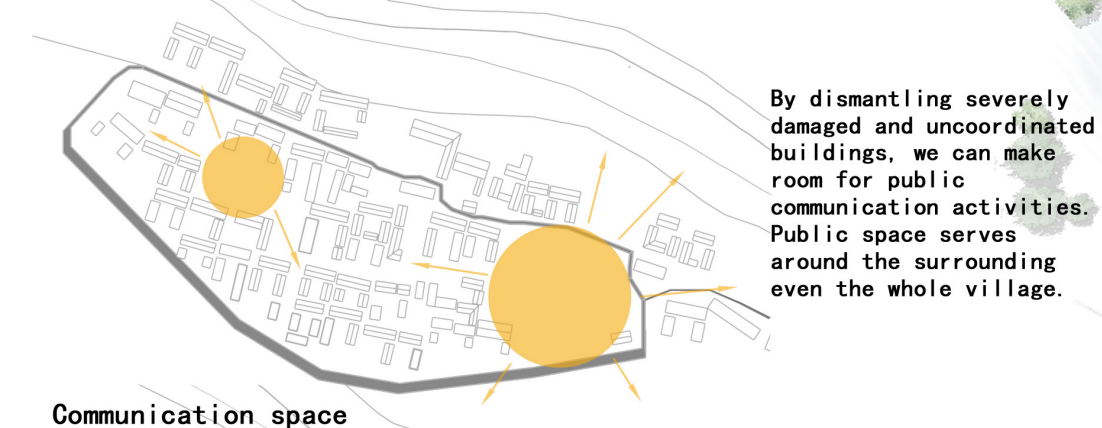
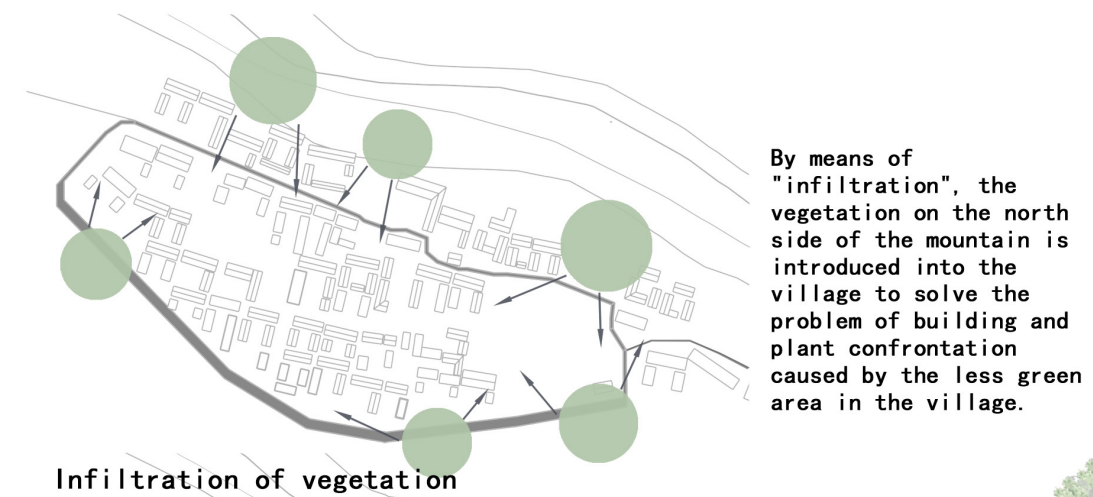
## SUMMARY OF THE PROBLEMS

## DESIGN IDEAS

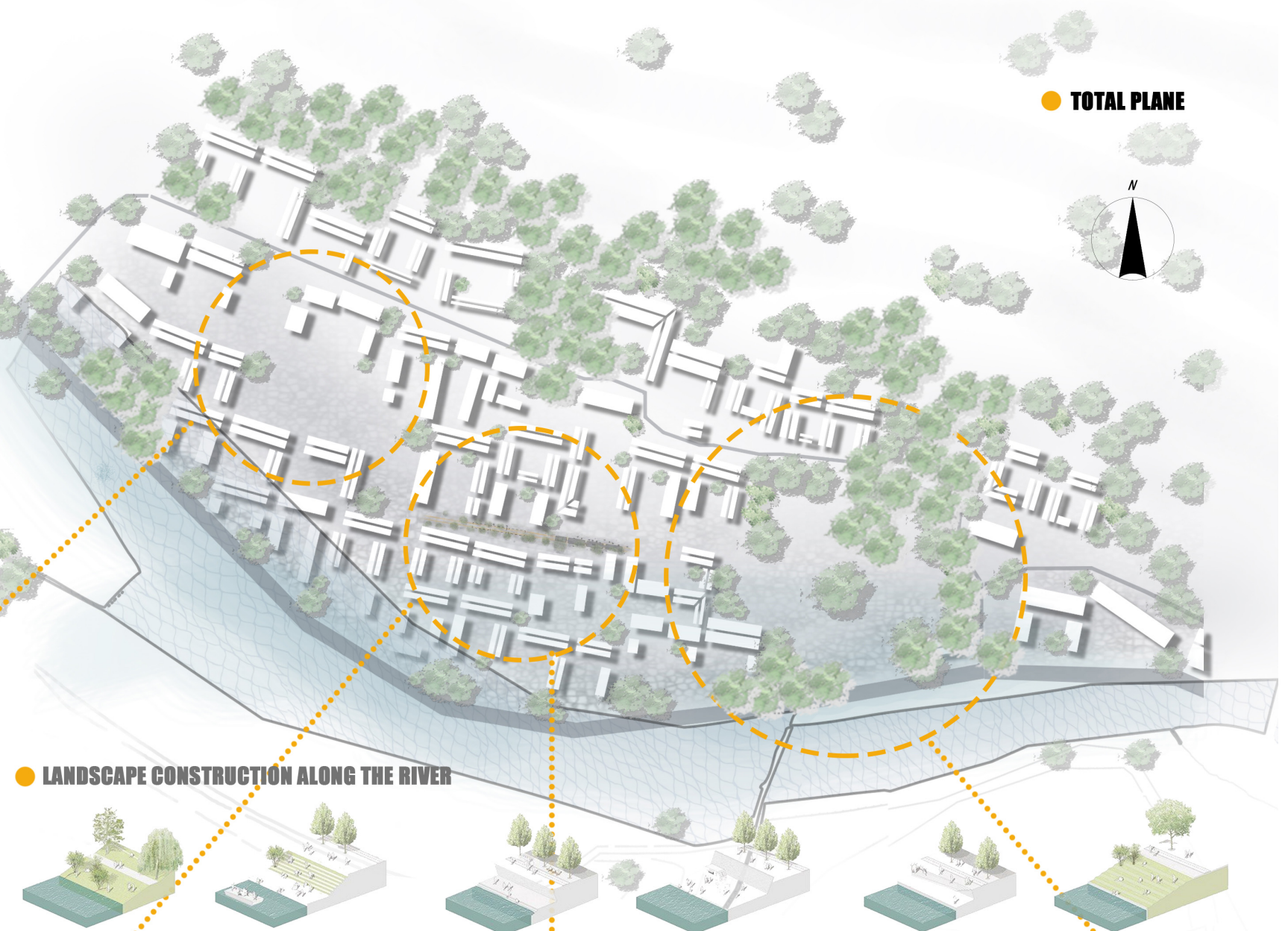




## ● DESIGN ANALYSIS DIAGRAM

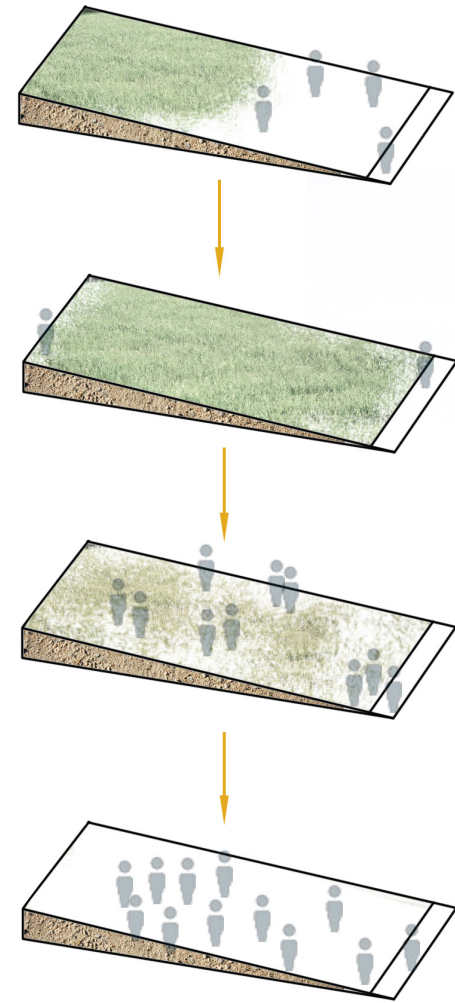


## ● VIEW EFFECT DIAGRAM





## ● A SEASON CHANGING SITE



- In spring, ice and snow melt, Green space is mainly used to enjoy snow scenery and outing activities.
- Summer vegetation can be used for soil consolidation and water conservation as well as recreational activities such as grass sliding
- Autumn fruit ripening, people can collect activities, in order to increase the level of communication between people.
- In winter, grasslands are covered with ice and snow, and natural slopes along the foot of the mountain can be used for skiing activities.

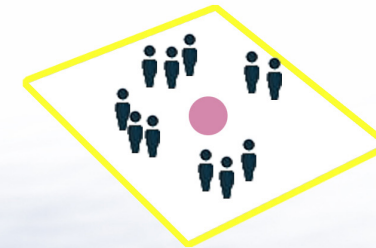
Spring



Summer



Autumn



Winter



## COMMUNICATION IN NATURE 3



10