

LANDSCAPE WEAVING

IN THE VALLEY OF THE TEMPLES OF AGRIGENTO

Country / City ITALY
 University / School DEPARTEMENT OF ARCHITECTURE "KORE" UNIVERSITY OF ENNA
 Academic year 2016/2017
 Title of the project LANDASCAPE WEAVING IN THE VALLEY OF THE TEMPLES OF AGRIGENTO
 Authors ROBERTA NAPOLI





PERFORMATIVE NATURE

Barcelona International Landscape Architecture Biennial

September 2018 **Barcelona**

SCHOOL PRIZE

X International Landscape Architecture Biennial

Máster d'Arquitectura del Paisatge -DUOT - UPC
ETSAB- Escola Tècnica Superior
d'Arquitectura de Barcelona
Avenida Diagonal, 649 piso 5
08028 Barcelona-Spain

TECHNICAL DOSSIER

Title of the project LANDSCAPE WEAVING IN THE VALLEY OF THE TEMPLES OF AGRIGENTO
Authors Roberta Napoli
Title of the course Graduation project
Academic year 2016/2017
Teaching Staff Prof.ssa Arch. Carmela Canzonieri
Department/Section/Program of belonging Department of Architecture and Engineering
University/School "KORE" University of Enna

Written statement, short description of the project in English, no more than 250 words

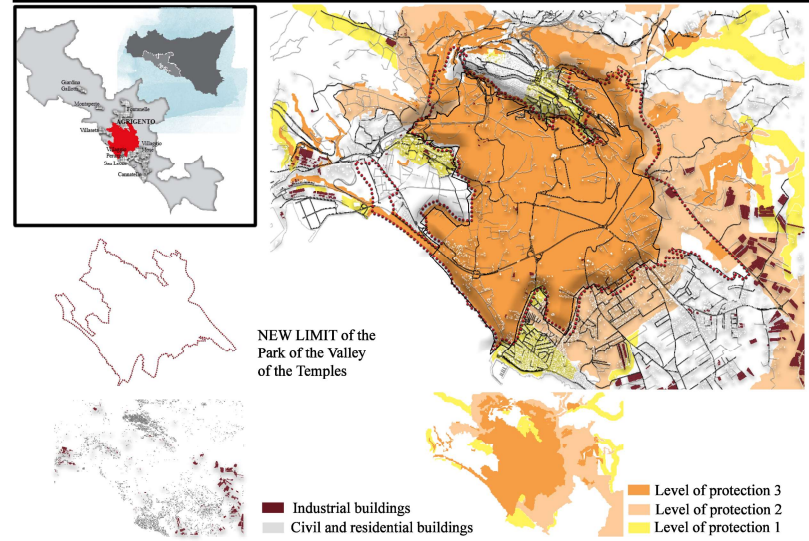
Building on the Plan of the Archeological and Landscape Park of the Valley of Temples of Agrigento, the proposed design aims to weave the whole surrounding landscape through actions that identify elements of the landscape, now in state of abandon, through the enlightenment of memory and the rediscover of territorial identity. The multidisciplinary analysis required the gathering of data of varied nature, capable to define critical issues, fundamental characteristics and history of the sites. The study of the alignments, of the signs in the landscape, works towards a concept of landscape layering, of enhancement of the territory, for a vision of a landscape continuum, rooted in an environmental system typical of the place. A new reading which we define "weaving", has seen the gradual shift from a punctual view, linked only to the monument, to one of context which finds in the design new possibilities, through a new concept of rural landscape within which the agricultural organization recovers a conscious use of the singularities of agricultural biotopes; agriculture interacts with hydro resources, with natural residual areas and ecosystem conservation in an archeological and agricultural Park in relation with the river also in a historical perspective. As waterways had a fundamental role in the history of the territory, the design finds in them the main connection in the weaving of the landscape. In this way the rural landscape in its new structure is able to accomplish the function of connecting zone between the Temples and the coast.

For further information
Máster d'Arquitectura del Paisatge -DUOT - UPC

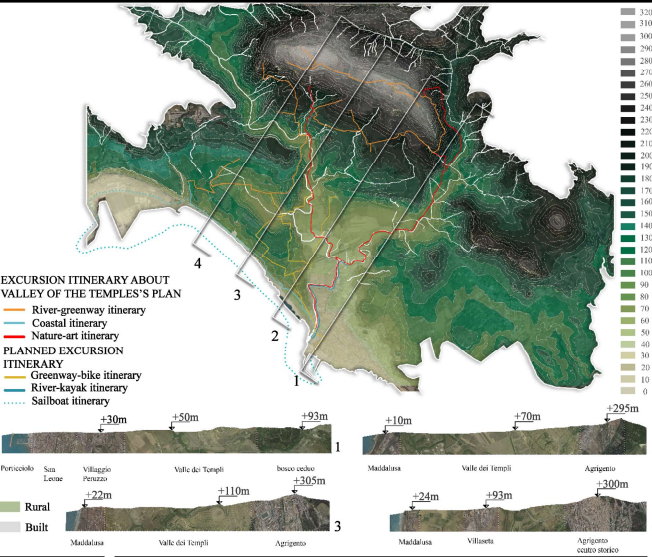
T: + 34 93 401 64 11 / +34 93 552 0842
Contact via email at: biennial.paisatge@upc.edu
Consult the web page <http://landscape.coac.net/>

LANDSCAPE WEAVING

INDUSTRIAL AND HUMAN ACTIVITIES

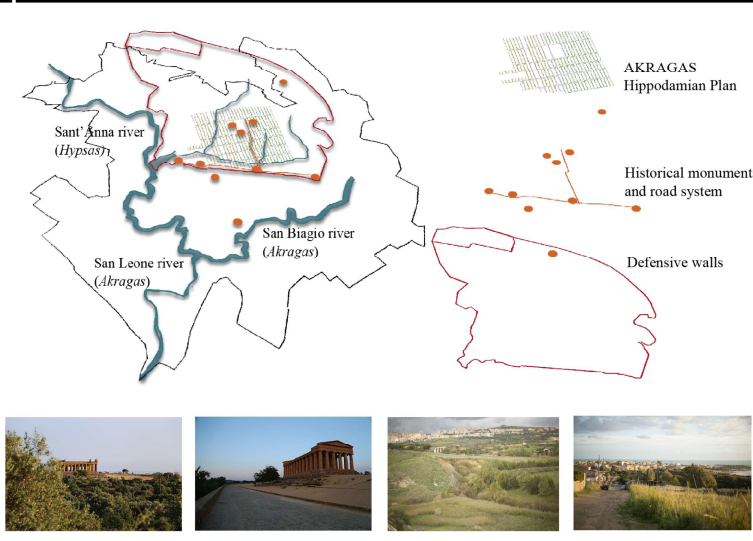


PLAN OF DIFFERENT ALTIMETRIES AND ITINERARIES



TERRITORIAL ANALYSIS

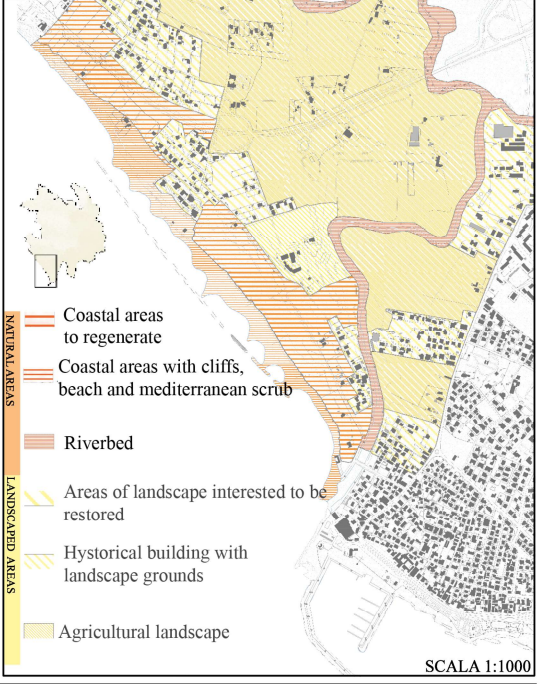
PRINCIPLE OF SETTLEMENT



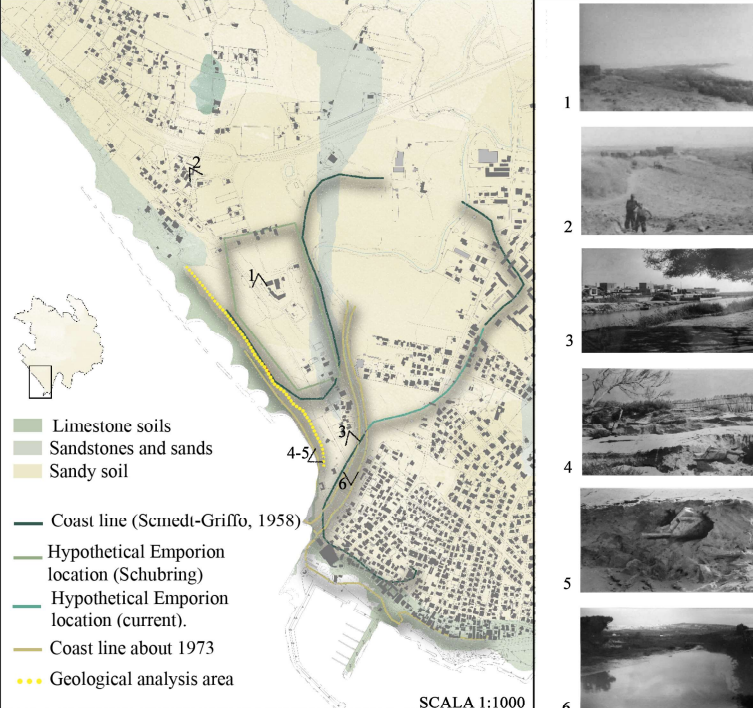
LAND USE PLAN



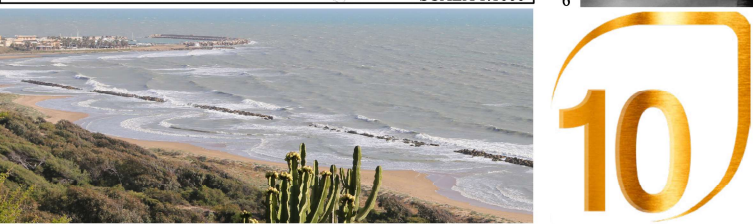
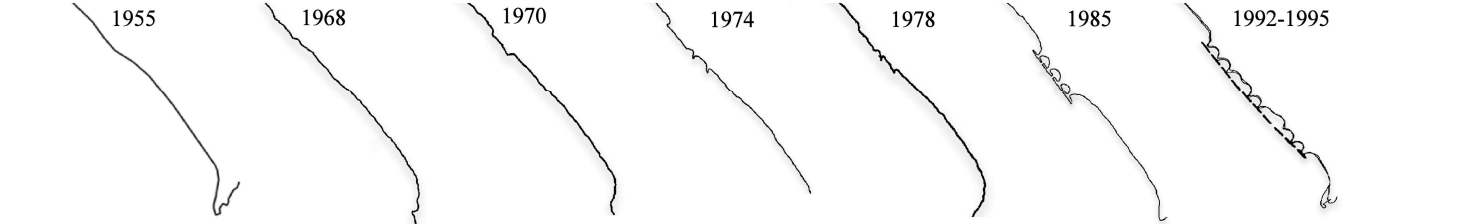
ARCHEOLOGICAL PARK AGENCY PLAN



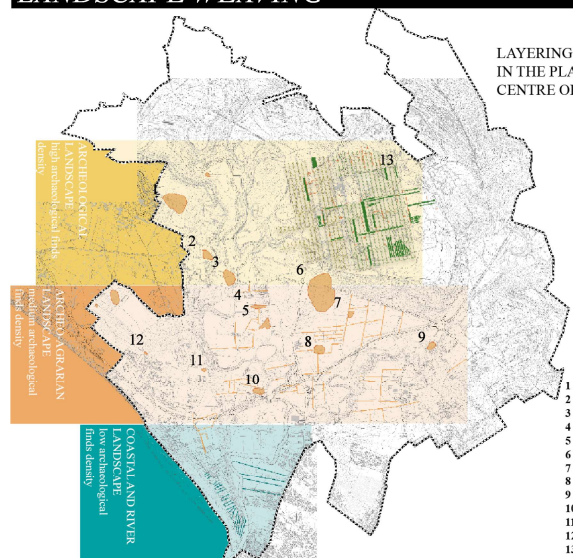
ARCHEOLOGICAL AND GEOLOGICAL ANALYSIS OF THE ANCIENT EMPORIUM



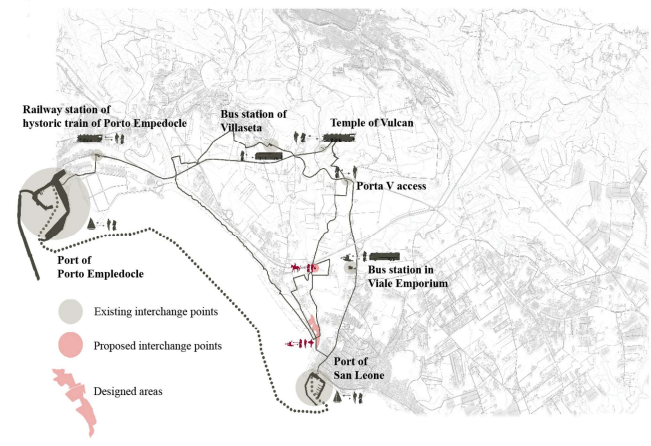
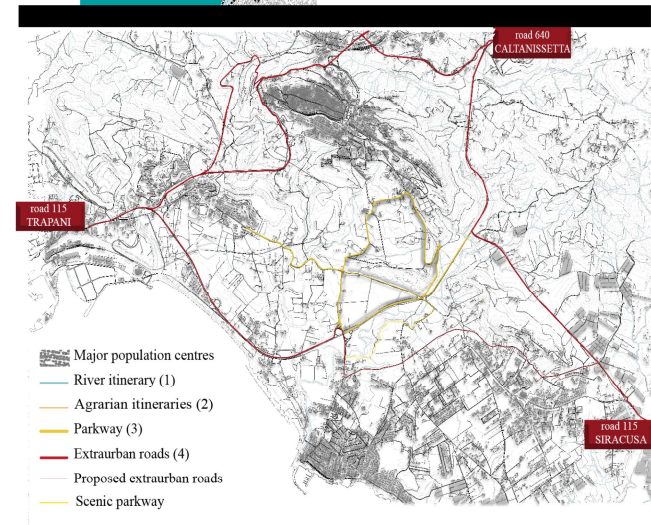
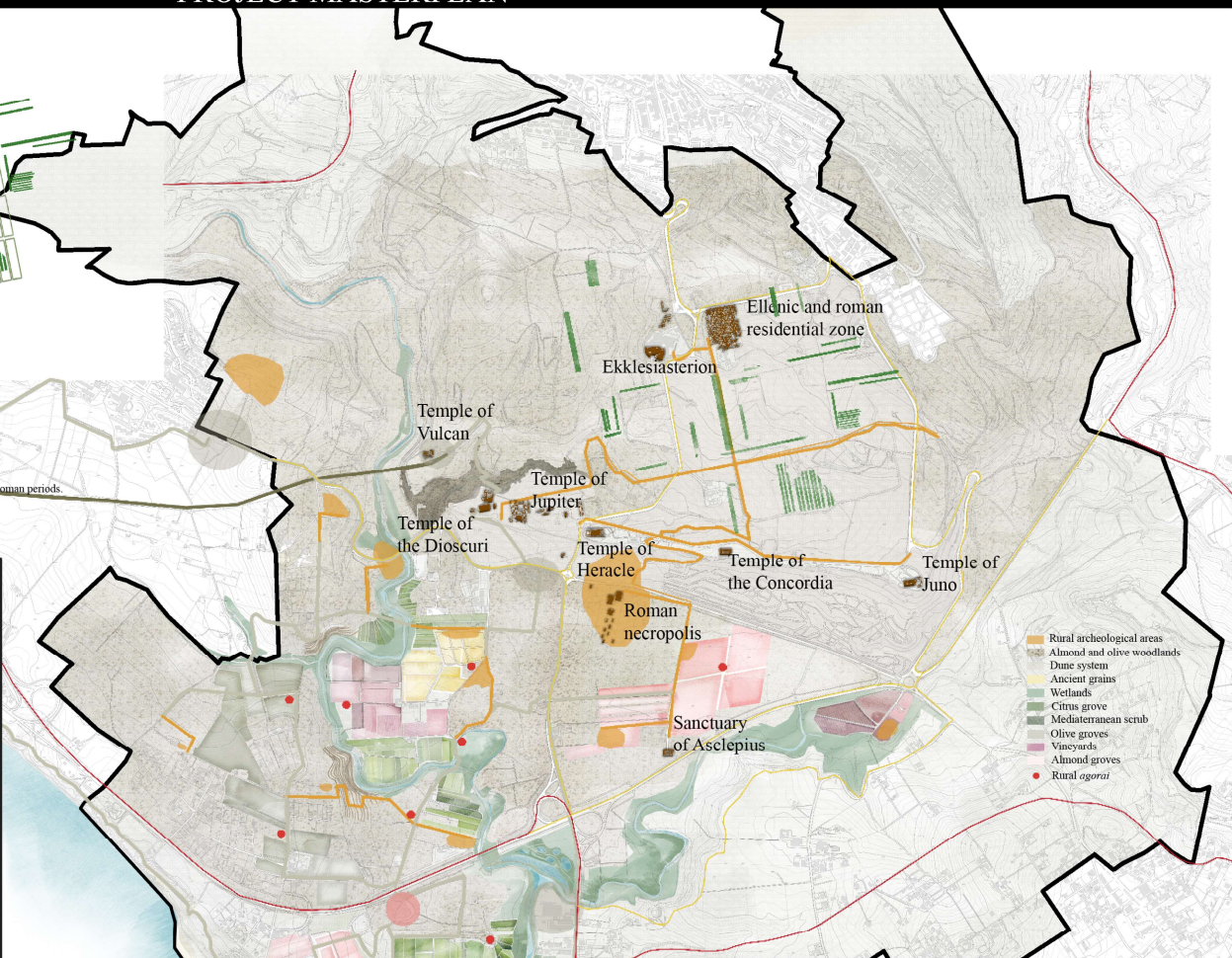
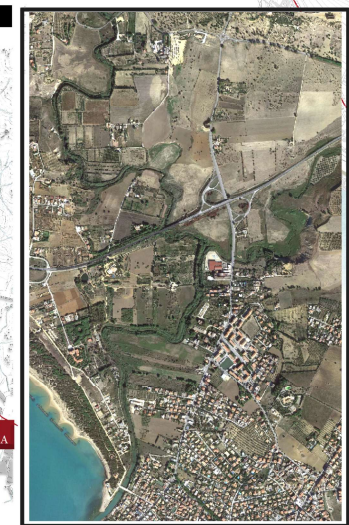
COASTAL STATE AND EVOLUTION



LAYERING OF LANDSCAPE SIGNS IN THE PLAN OF THE ANCIENT CENTRE OF AKRAGAS (13)



- 1 Poggio Giache. Rural settlement from the Arcaic and Classic periods.
- 2 Contrada S. Anna. Extrurban sanctuary.
- 3 Contrada S. Anna. Rural settlement from the Elicnic and Imperial roman periods.
- 4 Contrada S. Anna. Archaeological finds from Elicnic and roman period.
- 5 Contrada Sant'Anna. Rural settlement from the Elicnic period.
- 6 Piana di San Gregorio. Necropolis from roman period.
- 7 Piana di San Gregorio. Production area from the Classic and Elicnic periods.
- 8 Piana di San Gregorio. Rural settlement from the Roman Imperial period.
- 9 Piano di S. Gregorio. Rural settlement from the Classic, Elicnic, Republican and Imperial Roman periods.
- 10 Contrada Maddalusa. Rural settlement from the Elicnic and Imperial roman periods.
- 11 Contrada Maddalusa. Rural settlement from the Arcaic and Classic periods.
- 12 Contrada Maddalusa. Necropolis from Arcaic and Classic periods.
- 13 Plan of Akragas (Brienza, 2016).

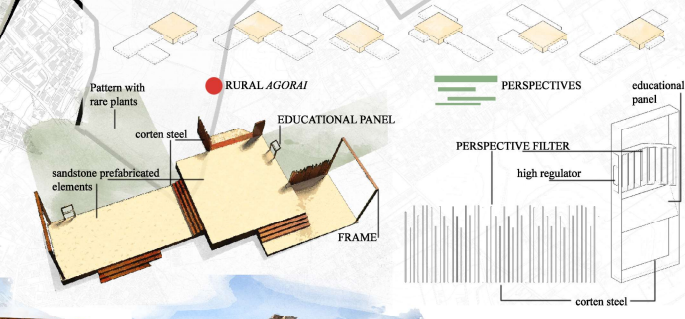


RIVER ITINERARY 1:1000



AGRARIAN ITINERARY 1:200

IN QUADRA

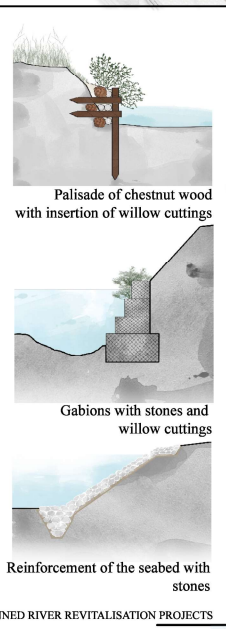
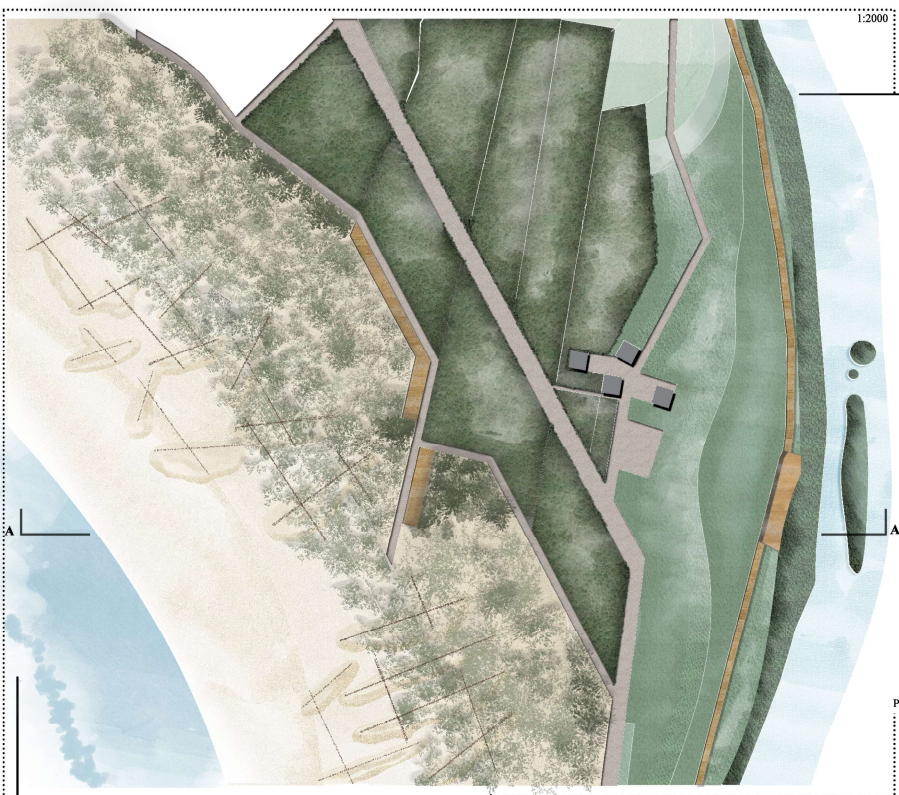


Areas with medium archaeological ruins density



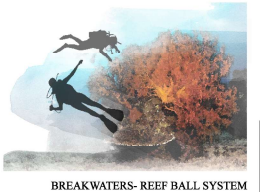
Areas with high archaeological ruins density



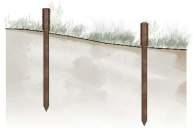


West wind significant wave height and displacement of sand

Sirocco winds silting up of the beach



BREAKWATERS- REEF BALL SYSTEM



WINDBREAKS - CHESTNUT WOOD POLES

- Beach
- Dune
- Mediterranean scrub
- Wetland
- Canna Indica
- Lavandula
- Iris
- Hotel
- Parking
- Horse-riding
- Infopoint



SECTIONS OF THE ECOSYSTEMIC REDEVELOPMENT

