

Country / City .....

University / School .....

Academic year .....

Title of the project .....

Authors .....

Italy/Rome

Università degli Studi Roma Tre

2016

The Petite Ceinture\_A new linear garden for Paris

Maria Virginia Bittini







# PERFORMATIVE NATURE

Barcelona International Landscape Architecture Biennial

September 2018 **Barcelona**

SCHOOL PRIZE

X International Landscape Architecture Biennial

Máster d'Arquitectura del Paisatge -DUOT - UPC

ETSAB- Escola Tècnica Superior

d'Arquitectura de Barcelona

Avenida Diagonal, 649 piso 5

08028 Barcelona-Spain

## TECHNICAL DOSSIER

Title of the project	THE PETITE CEINTURE _ A NEW LINEAR GARDEN FOR PARIS
Authors	Maria Virginia Bittini
Title of the course	Masterthesis in Architecture
Academic year	2016
Teaching Staff	Annalisa Metta
Department/Section/Programofbelonging	Department of Architecture
University/School	Università degli Studi di Roma Tre

La Petite Ceinture ; the small belt, is the 33 km long ring railway in Paris, built in 1851 and decommissioned in 1934. In the decades after being decommissioned, it has profoundly changed: from the city's development infrastructure, into a rigid line of fracture of urban continuity, obstacle to the porosity of the many complex spatial, environmental and social relationships that are broken up, often generating situations of degradation. At the same time, isolation and abandonment allowed the uncontrolled and spontaneous development oclandestine experimental activities and uses of pioneer vegetation, the mixture of which overtime gave the route an important potential endowment of new urban values.

Today, the disused railway heritage has become the object of new attention. Hence the idea of transforming the Petite Ceinture into an unprecedented linear public space at the scale of the entire city, hybridizing the characteristics of a large urban garden with the restoration of the original function, using well-tested forms of soft mobility. The result is an infrastructure - railway and landscape - that connects all the major parks already existing in the eastern quadrant of Paris, ringing a succession of public spaces among the most important of the city, of which it constitutes a new backbone.

For further information

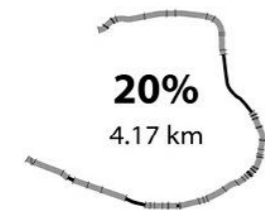
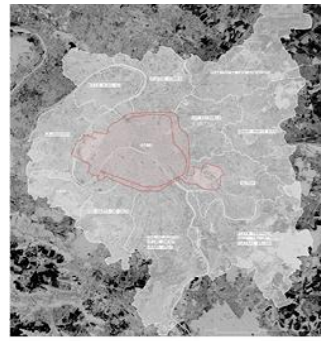
**Máster d'Arquitectura del Paisatge -DUOT - UPC**

T: + 34 93 401 64 11 / +34 93 552 0842

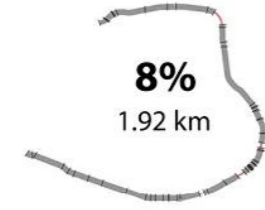
Contact via email at: [biennial.paisatge@upc.edu](mailto:biennial.paisatge@upc.edu)

Consult the web page <http://landscape.coac.net/>

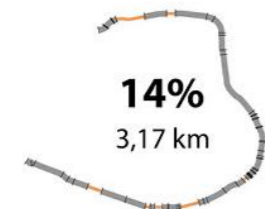




Tunnel



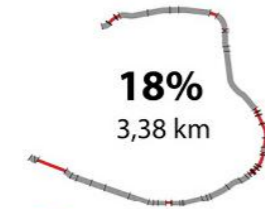
Viaduct



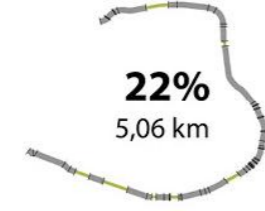
Covered cuts



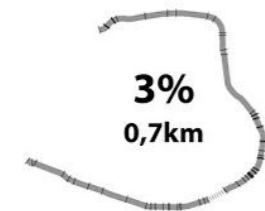
Opened cuts



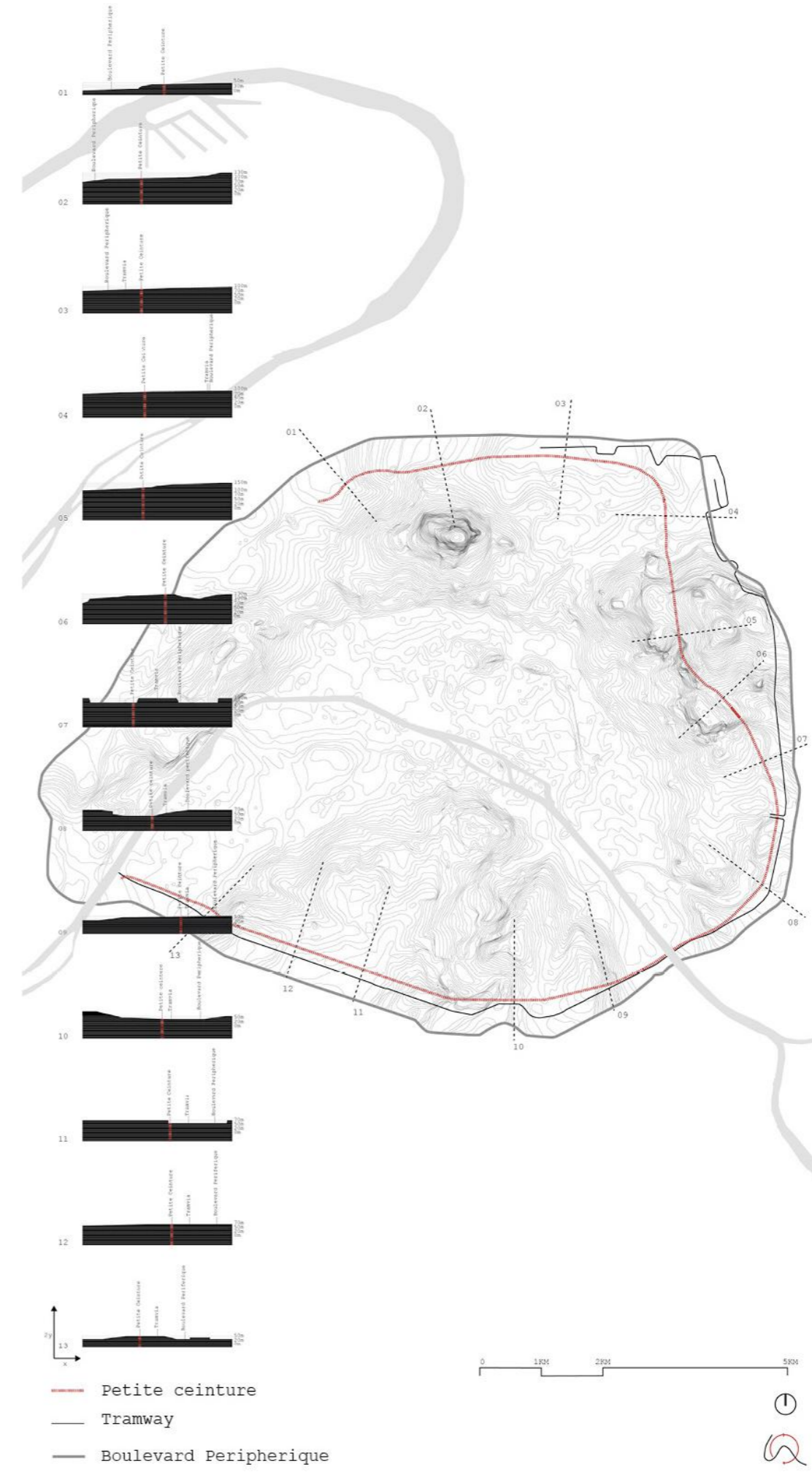
Embankment



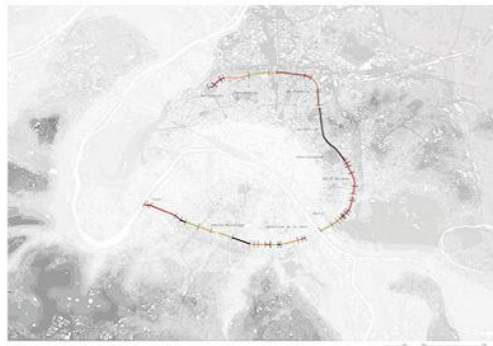
At level



Interrupted



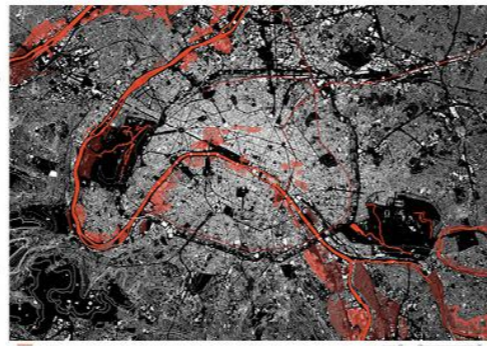




Orography



Vegetation



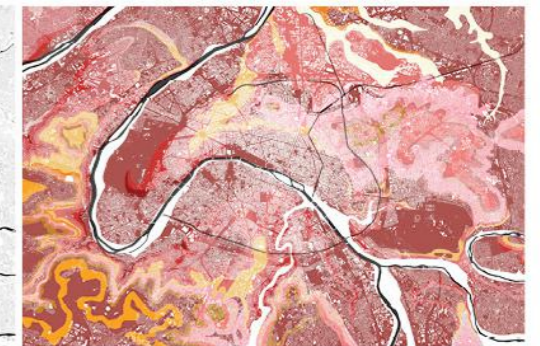
Vegetation



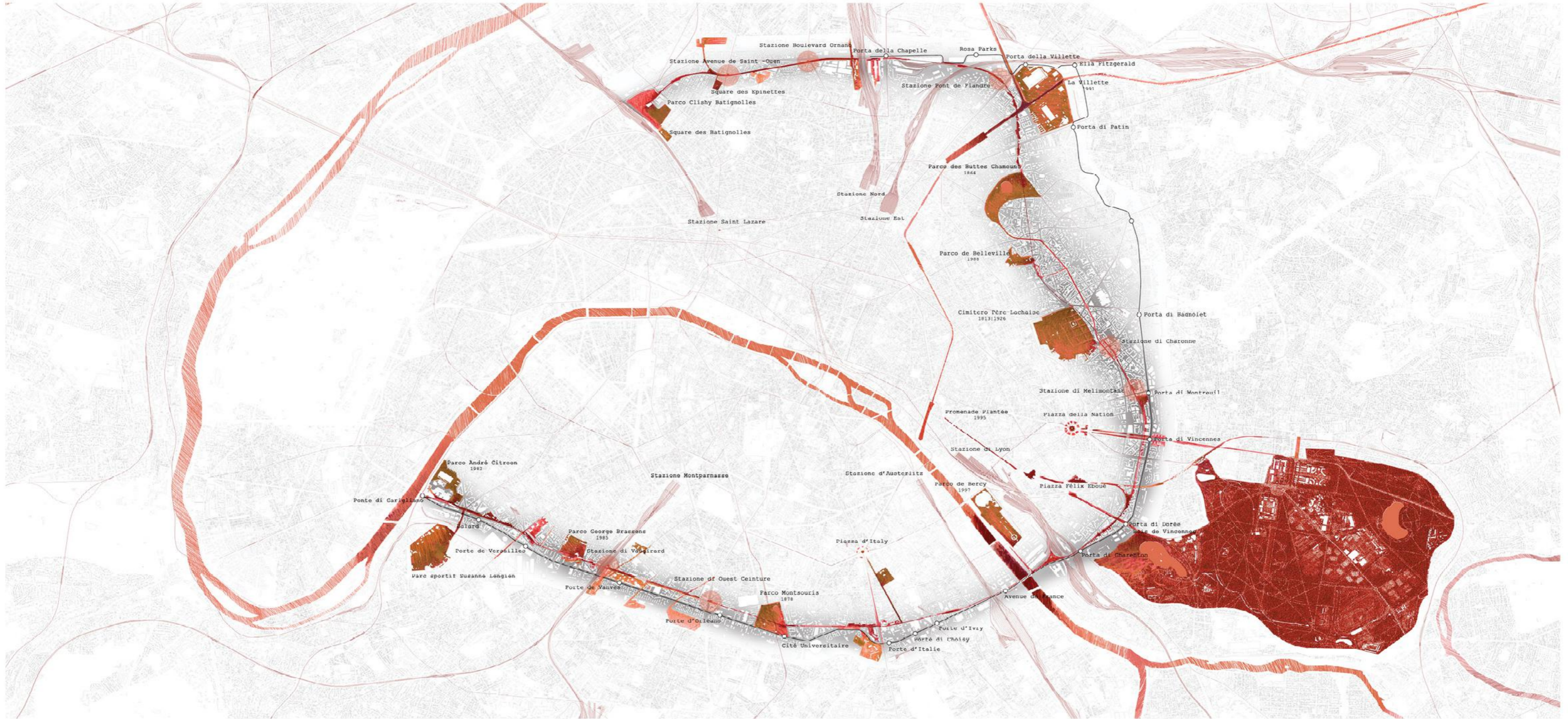
Infrastruttura



System of buildings



Geology



Masterplan







Compatibility between transport and linear park



— Petite Ceinture — Traimtrain — Tramvia ● Nuove fermate

- Park of la Villette
- Park of Boutes Chamount
- Park of Belleville
- Cemetery of Perè Lachaise
- Promenade plantée
- Bois de Vincennes
- Park of Bercy

Tract 1:3,6 Km



Tract 2:2,6,9 Km

