

Country / City Italy, Milan

University / School MSc Landscape Architecture \_ Land Landscape Heritage, AUIC School

Academic year 2017-18

Title of the project Redline

Authors Oguz Kemal Bařar





# PERFORMATIVE NATURE

Barcelona International Landscape Architecture Biennial

September 2018 **Barcelona**

SCHOOL PRIZE

X International Landscape Architecture Biennial

Máster d'Arquitectura del Paisatge -DUOT - UPC

ETSAB- Escola Tècnica Superior

d'Arquitectura de Barcelona

Avenida Diagonal, 649 piso 5

08028 Barcelona-Spain

## TECHNICAL DOSSIER

Title of the project Redline  
Authors Oguz Kemal Başar  
Title of the course Urban and rural open spaces network and parks design studio  
Academic year 2017-18  
Teaching Staff Paolo Bürgi, Antonio Longo  
Department/Section/Program of belonging MSc Landscape Architecture \_ Land Landscape Heritage, AUIC School  
University/School Politecnico di Milano

Written statement, short description of the project in English, no more than 250 words

Red Line is a new meeting point in the Southwest of Milan. The area is located between the center of Milan and the suburb, near the Naviglio Pavese. It is a filter for many things: people, places, districts, transportations, behaviour. Creating a new attraction point and requalifying a place for everyone is one of the main aims of the Red Line. The project site is located in an historical place, next to the San Cristoforo Chapel, the design is inspired by one of the main symbols of Milan, the big drake of the Visconti family in the middleage. This new snake is a landscape infrastructure which connects with a high passage two districts well known for art and design. The project was designed taking into consideration the context and all the recent functions in the surrounding area. Red is a very strong colour meaning love, anger, power, fire, blood, energy, passion, desire and many other emotions. The project is one of the first outcomes of the new international Master in Science in Landscape Architecture \_ Land Landscape Heritage by the AUIC School of the Politecnico di Milano. Land Landscape and Heritage puts in a nutshell an original combination of disciplines that are strictly related to the specificity of the Italian and European contexts and contemporary landscape challenges.

For further information

**Máster d'Arquitectura del Paisatge -DUOT - UPC**

T: + 34 93 401 64 11 / +34 93 552 0842

Contact via email at: [biennial.paisatge@upc.edu](mailto:biennial.paisatge@upc.edu)

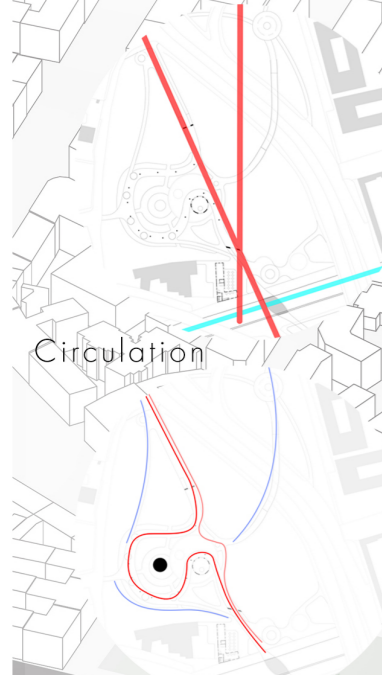
Consult the web page <http://landscape.coac.net/>

# REDLINE

Your experiences will let you in

Area is located between two important design and art districts. It is a filter which connects center Milan and suburb Milan. Also it is very close to San Cristoforo Church which is very historical church located next to Naviglio Pavese. There are many separated green areas between two sides of Naviglio but there is not well connected. Another keypoint is people who lives there. This place is very rich of different cultures and societies. Requalifying space should connect people very well.

Main Axes

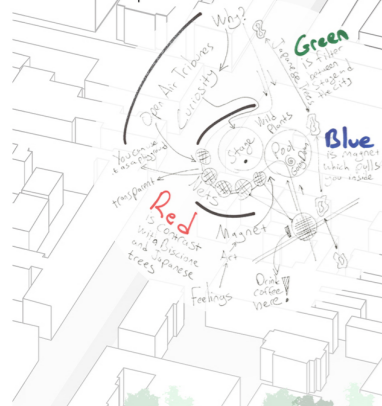


Circulation

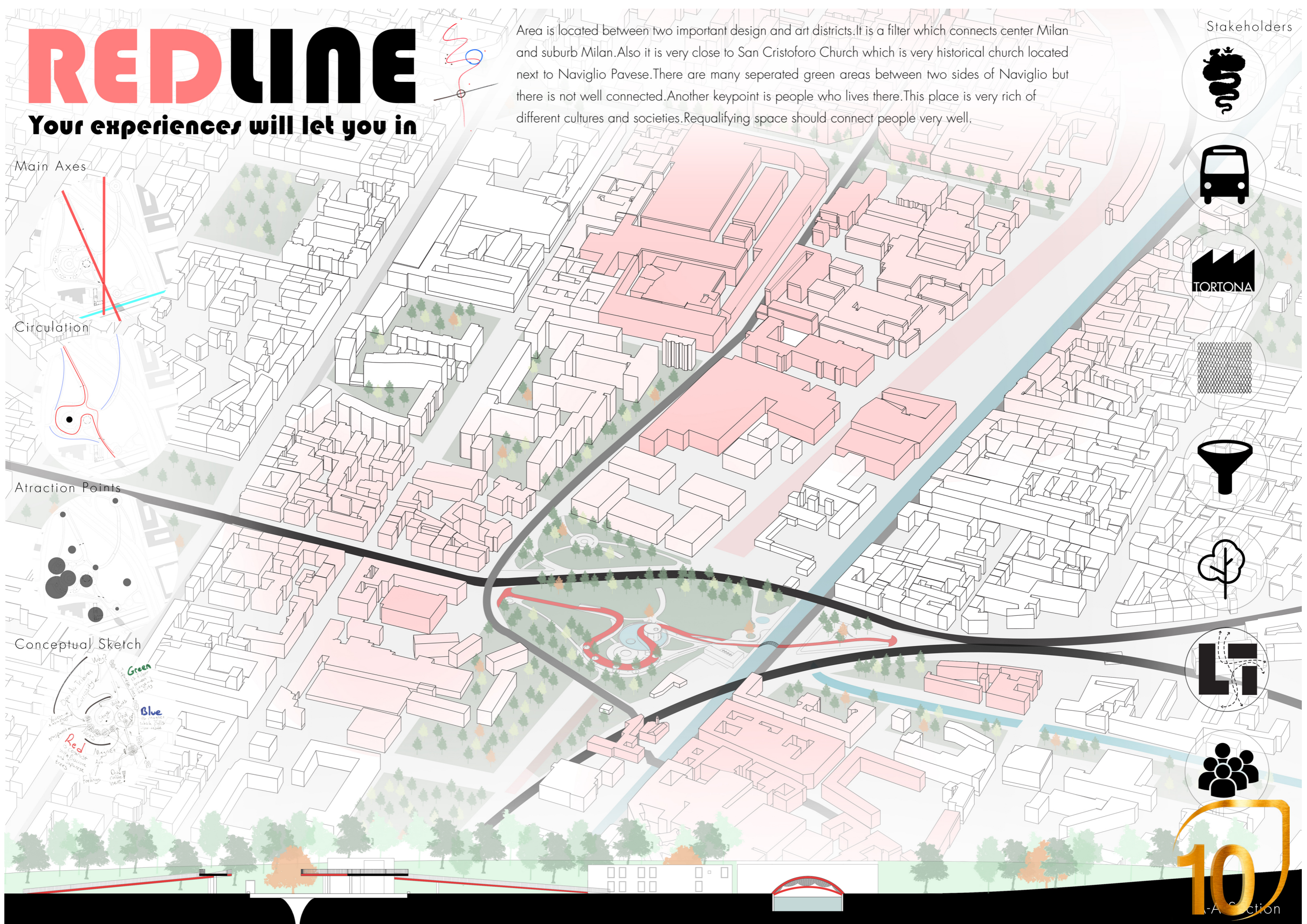
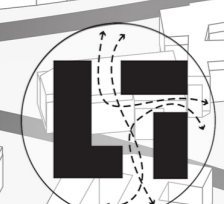
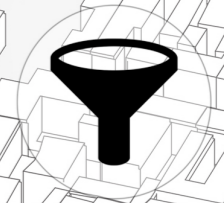
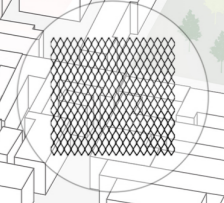
Attraction Points



Conceptual Sketch



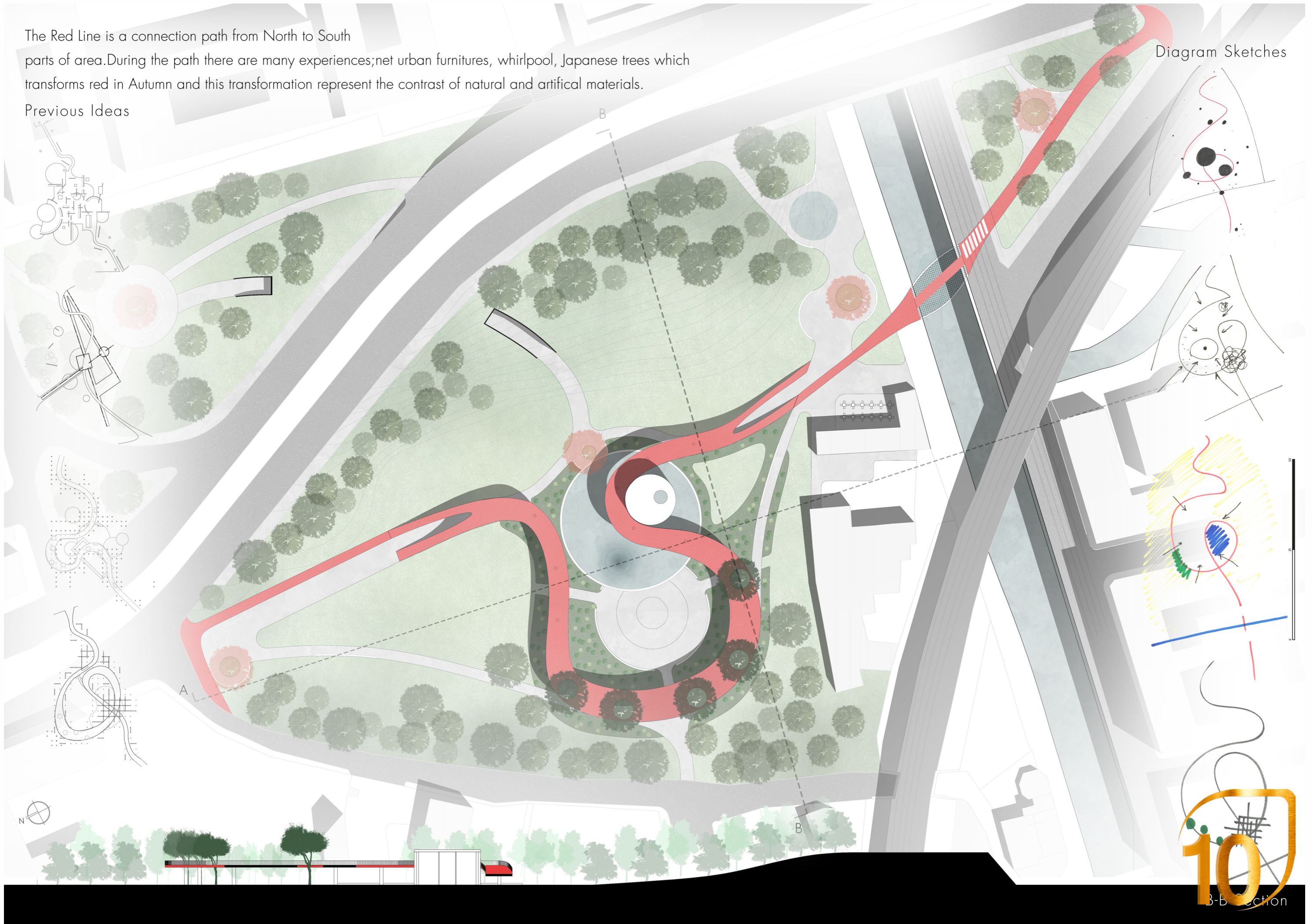
Stakeholders



The Red Line is a connection path from North to South parts of area. During the path there are many experiences; net urban furnitures, whirlpool, Japanese trees which transforms red in Autumn and this transformation represent the contrast of natural and artificial materials.

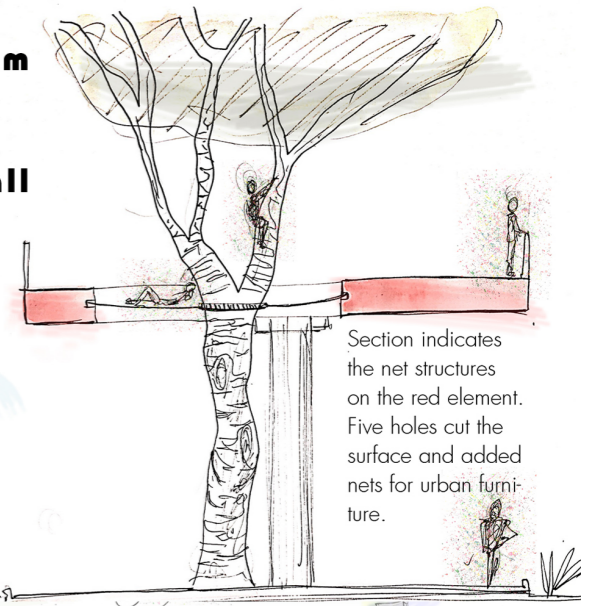
Previous Ideas

Diagram Sketches



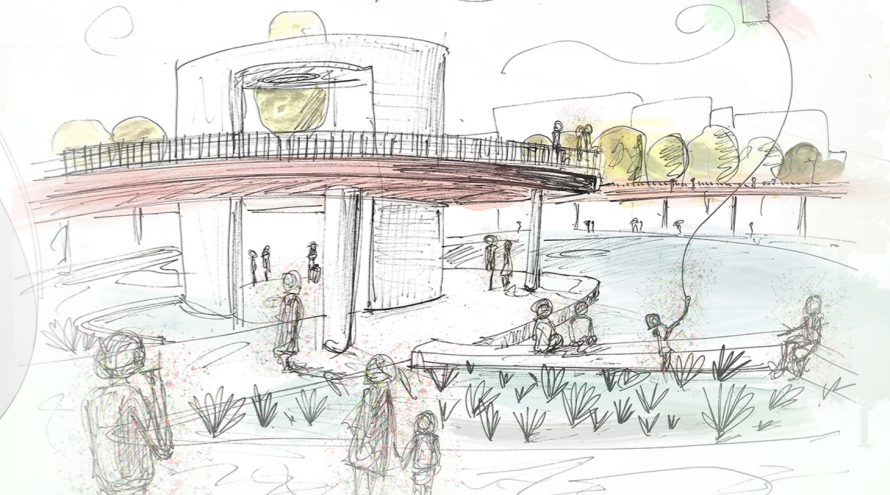
**"Color is all. When color is right, form is right. Color is everything, color is vibration like music: everything is vibration."**

**Marc Chagall**



Section indicates the net structures on the red element. Five holes cut the surface and added nets for urban furniture.

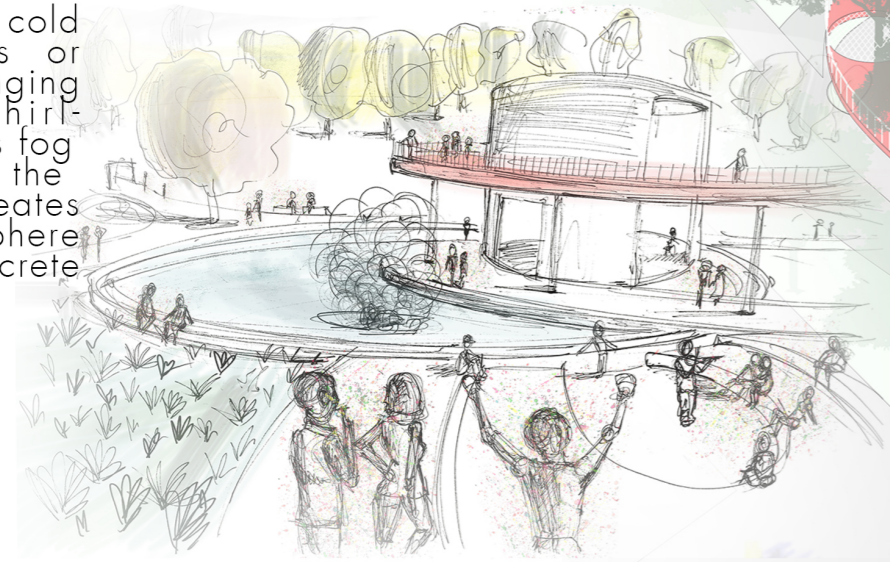
Trees in the red elements surrounded by net structure and created urban furniture for people. People can lay down or climb tree more safely. This semi public structures provides transparency between public and people.



Different layers link people with vegetations and colours. Different contrast creates different micro heterotopias with different experiences.

Net structure bridge with slope accessibility make connection with two sides and create an amusement park for everyone

During the cold winter days or fast changing weather, whirlpool creates fog in middle of the pool and creates an atmosphere with concrete urban stage



Double passage creates an illusion and visual connections with other elements in the Red Line. On way goes up and other goes down, people can decide to their experiences.

