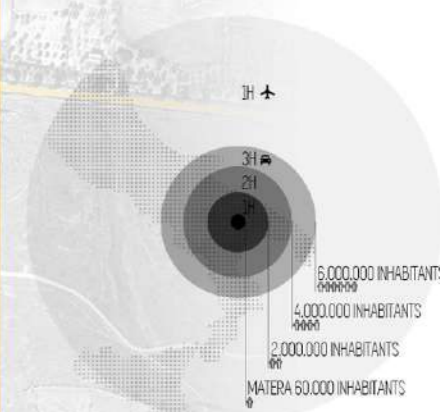


MATERA  
capital of culture  
2019



HOW MANY USERS INVOLVES?

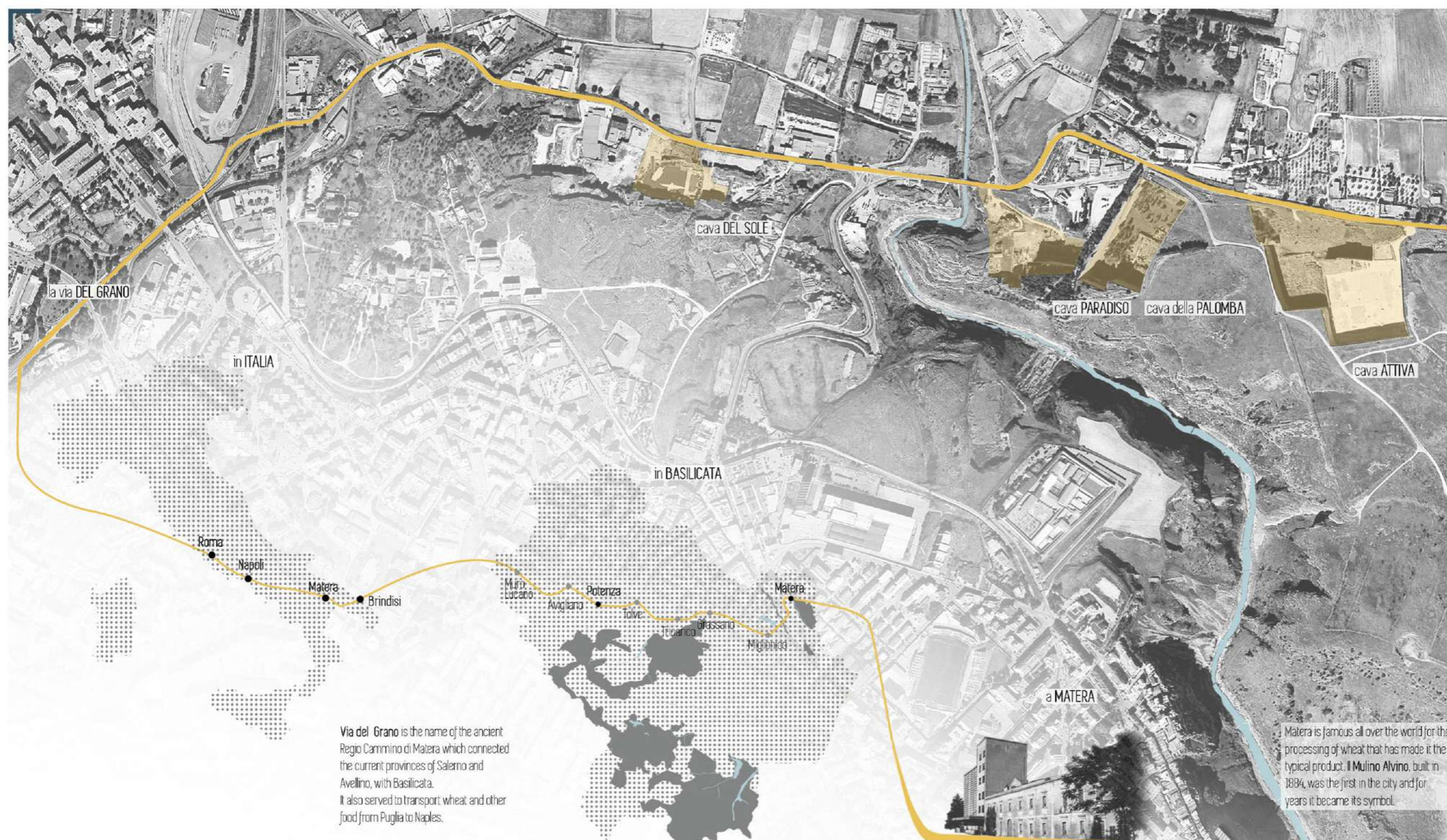


The area of the application reaches a basin of two million inhabitants, including a territory composed of medium-large urban centers

CONCEPT



MORFOLOGY



la via DEL GRANO

in ITALIA

in BASILICATA

a MATERA

Via del Grano is the name of the ancient Regio Cammino di Matera which connected the current provinces of Salerno and Avellino, with Basilicata. It also served to transport wheat and other food from Puglia to Naples.

Matera is famous all over the world for the processing of wheat that has made it the typical product. Il Mulino Alvino, built in 1884, was the first in the city and for years it became its symbol.

TERRITORIAL SECTION



Country / City  
University / School  
Academic year  
Title of the project  
Authors

Italy  
University of Rome "La Sapienza"  
2016 / 2017  
Matera, Capital of culture 2019: New Landscapes for Via del Grano and Park of Quarries  
Rossana Zariello





# PERFORMATIVE NATURE

Barcelona International Landscape Architecture Biennial

September 2018 **Barcelona**

SCHOOL PRIZE

X International Landscape Architecture Biennial

Máster d'Arquitectura del Paisatge -DUOT - UPC  
ETSAB- Escola Tècnica Superior  
d'Arquitectura de Barcelona  
Avenida Diagonal, 649 piso 5  
08028 Barcelona-Spain

## TECHNICAL DOSSIER

Title of the project ..... Matera, Capital of culture 2019: New Landscapes for Via del Grano and Park of Quarries  
Authors ..... Rossana Zariello  
Title of the course ..... Master thesis  
Academic year ..... 2016 / 2017  
Teaching Staff ..... supervisor: Fabio DiCarlo  
Department/Section/Program of belonging ..... DIAP: dipartimento di architettura e progetto  
University/School ..... University of Rome "La Sapienza"

Written statement, short description of the project in English, no more than 250 words

The thesis develops in Matera: place in continuous ferment for the candidacy to capital of culture 2019.

The project consists in the redevelopment of a part of the Via Appia, commonly called Via del Grano because it assured the transport of the same from Puglia to Campania. The route lies along four tuff quarries, of different morphology and age, inviting the traveler to follow a path of discovery according to a progression of activity. The project objectives are to: create spaces to increase connections and exchanges, inform and make the user aware of the peculiarities of the place, exploiting the resources of the territory. The first was achieved through the creation of a caravanserai containing hotels, congress centers, offices.

The second through the insertion of a teaching area, a museum area, temporary exhibitions and an open theater. The third thanks to the setting up of a km 0 market .

Great attention was paid to the landscape intervention, not invasive and mitigating, taking advantage of the ancient tracks of workers for cycle paths, and the existing morphologies for the creation of gardens and fountains .

For further information

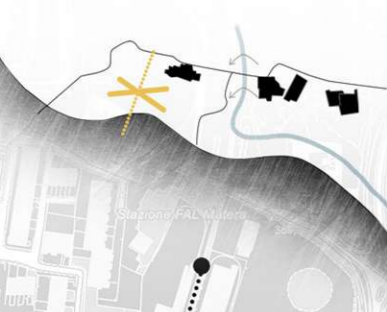
**Máster d'Arquitectura del Paisatge -DUOT - UPC**

T: + 34 93 401 64 11 / +34 93 552 0842

Contact via email at: [biennial.paisatge@upc.edu](mailto:biennial.paisatge@upc.edu)

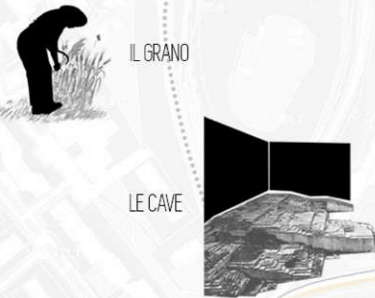
Consult the web page <http://landscape.coac.net/>

CRITICAL ISSUES

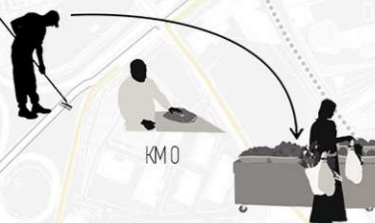


KEY WORDS

INFORM VISITOR ABOUT LOCAL CHARACTERISTICS



TAKE ADVANTAGE OF THE RESOURCES OF THE AREA



CREATE SPACES TO INCREASE CONNECTIONS AND EXCHANGES



VEGETATION system

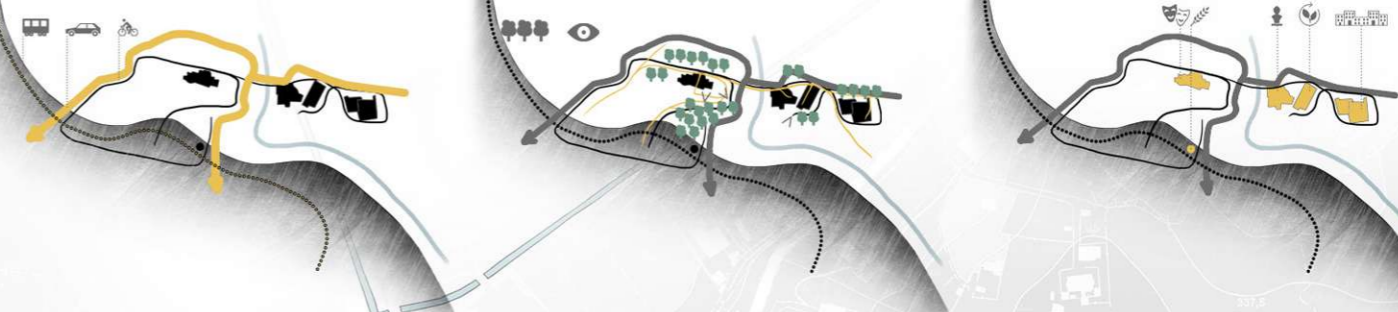


- existing
- regular forest
- rows
- sparse forest
- dense forest
- mitigation

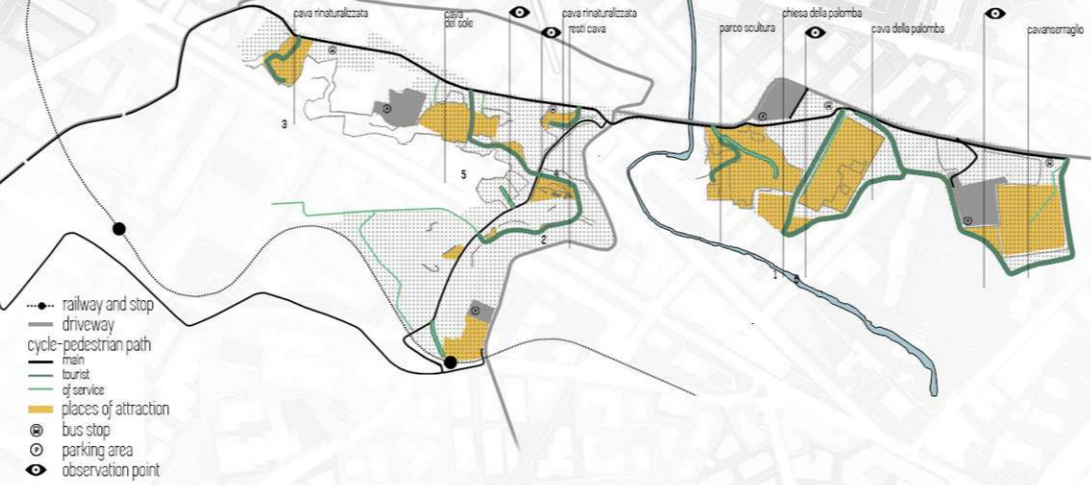
MASTERPLAN



STRATEGIES



INFRASTRUCTURE system



- railway and stop
- driveway
- cycle-pedestrian path
- main
- tourist
- of service
- places of attraction
- bus stop
- parking area
- observation point

SERVICES system



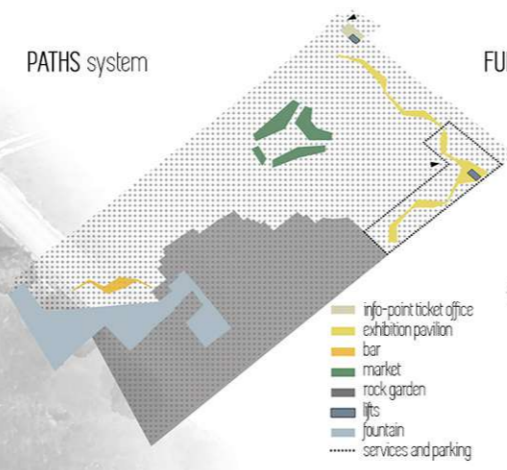
- 1 campi sportivi
- 2 ristorante
- 3 biglietteria
- 4 Cava del Sole: teatro all'aperto
- 5 oasi
- 6 bar
- 7 Mulino Alvine: museo
- 8 stazione ferroviaria metropolitana
- 9 Cava Paradiso: parco scultura
- 10 area didattica
- 11 info point / biglietteria
- 12 info point / biglietteria
- 13 Chiesa della Palomba
- 14 Cava della Palomba: mercato, esposizioni, ristoro
- Caravanserraglio: centro congressi, hotel, uffici, servizi

The Park of the Quarries wants to re-propose the route of the travelers along the Via del Grano as a path of discovery, a place of meeting and passage according to a progression of activity up to the entrance of the city. Along the Via del Grano, as along all the commercial routes, not only the goods were traveling, but above all the ideas, the thoughts, the philosophy.

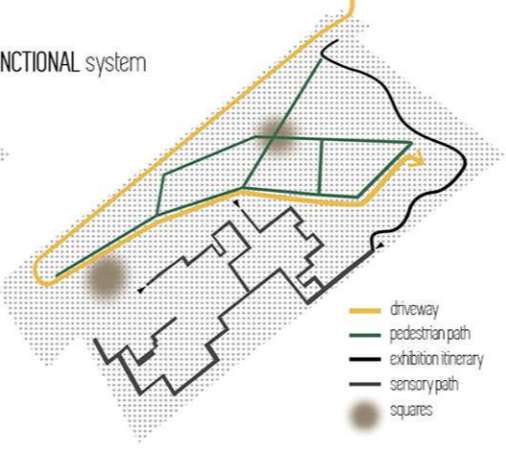




PATHS system



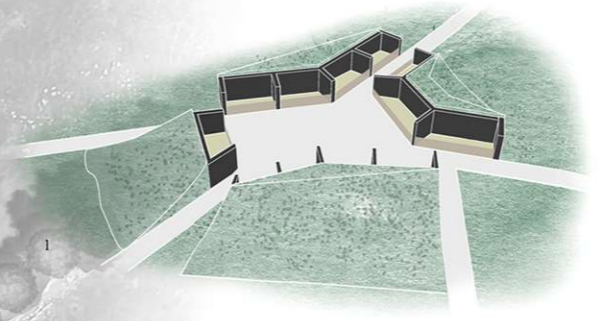
FUNCTIONAL system



- info-point ticket office
- exhibition pavilion
- bar
- market
- rock garden
- lifts
- fountain
- services and parking

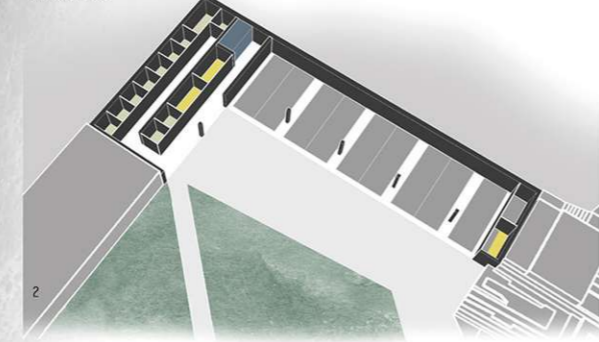
- driveway
- pedestrian path
- exhibition itinerary
- sensory path
- squares

MARKET



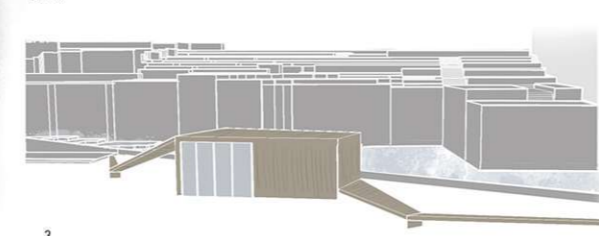
The concept of the park is to camouflage the structures, to discover it when you pass through it. To achieve this, I used green roof for market coverage.

SERCIVES

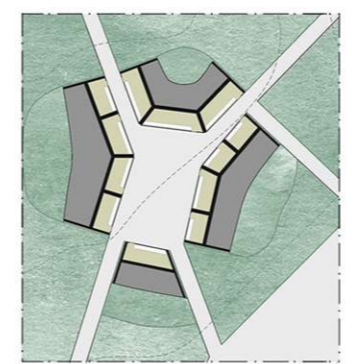


The tuff bench hides a part reserved for the parking of the trucks, which load and unload goods. Another part contains warehouses, toilets and vertical connections to reach the exhibition path.

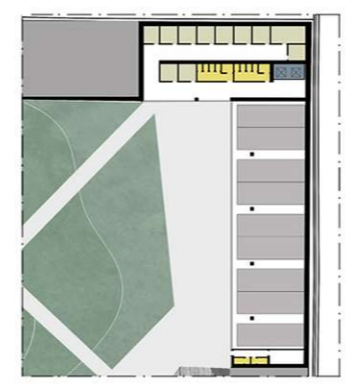
BAR



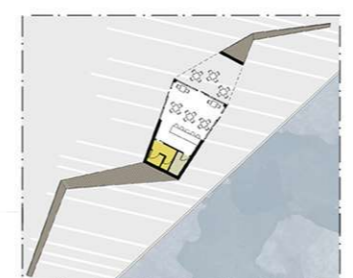
The bar also follows the principle of mimesis of the other elements. It is composed of a continuous wood structure that creates a cover for visitors and seats



- market area

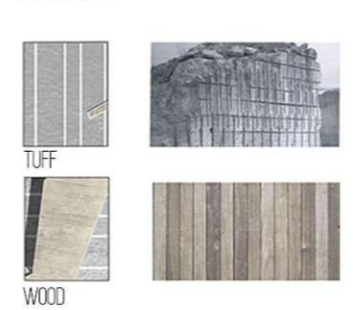


- warehouses
- toilet
- vertical connections
- parking

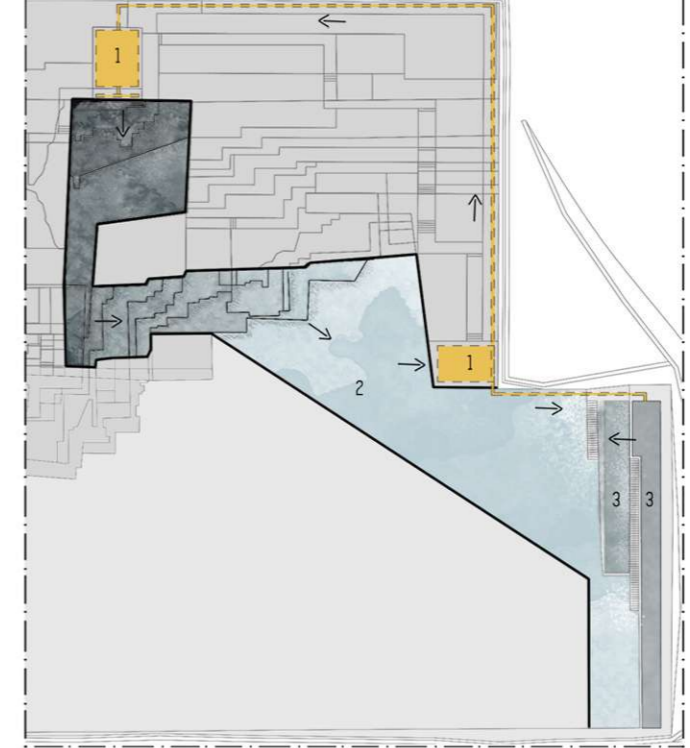


- kitchen
- toilet

MATERIALS



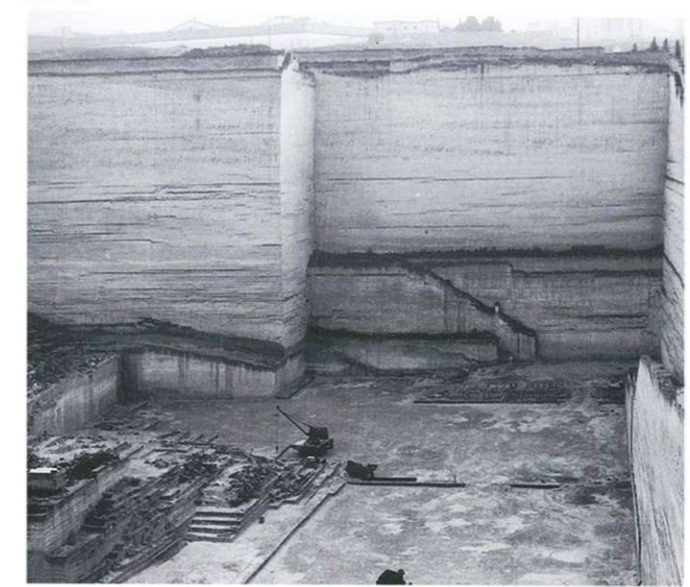
FOUNTAIN



The presence of water within the project, in addition to transmitting peace and tranquility, lowers the temperature inside of the quarry.

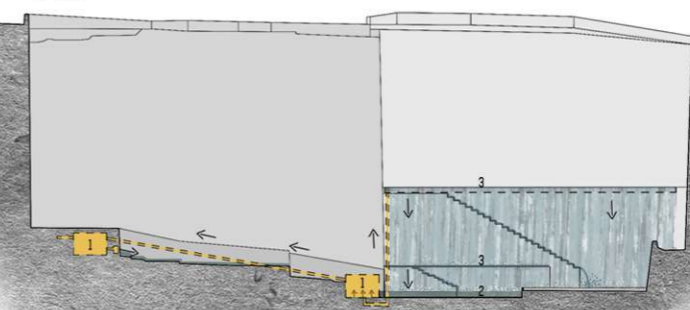
- 1 pumping station
- 2 hip bone
- 3 calm bath
- water path

BEFORE

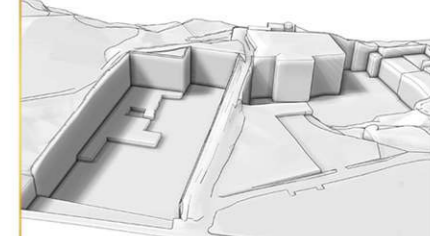


Take advantage of the potential of the place and the signs left over time as memory of the work of many men, distorting the pre-existing for give them new life.

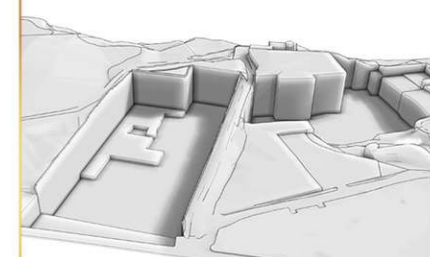
AFTER



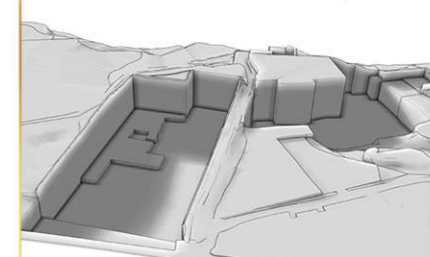
SUNLIGHT analysis



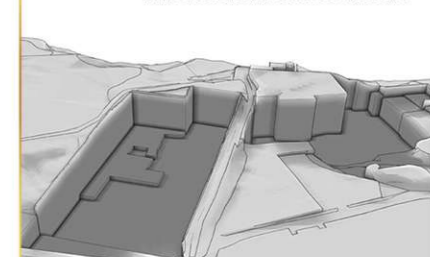
SUMMER SOLSTICE 21 June 11.00 am.



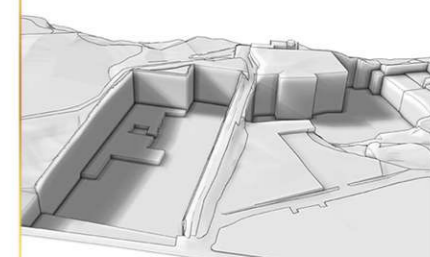
SUMMER SOLSTICE 21 June 4.00 pm.



WINTER SOLSTICE 21 December 11.00 am.



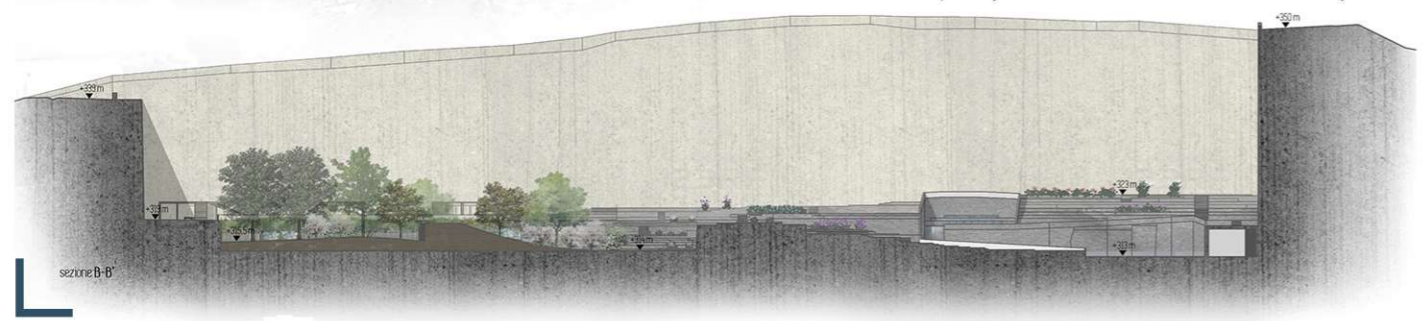
WINTER SOLSTICE 21 December 4.00 pm.



VERNAL EQUINOX 21 March 11.00 am.



AUTUMNAL EQUINOX 23 September 11.00 am.





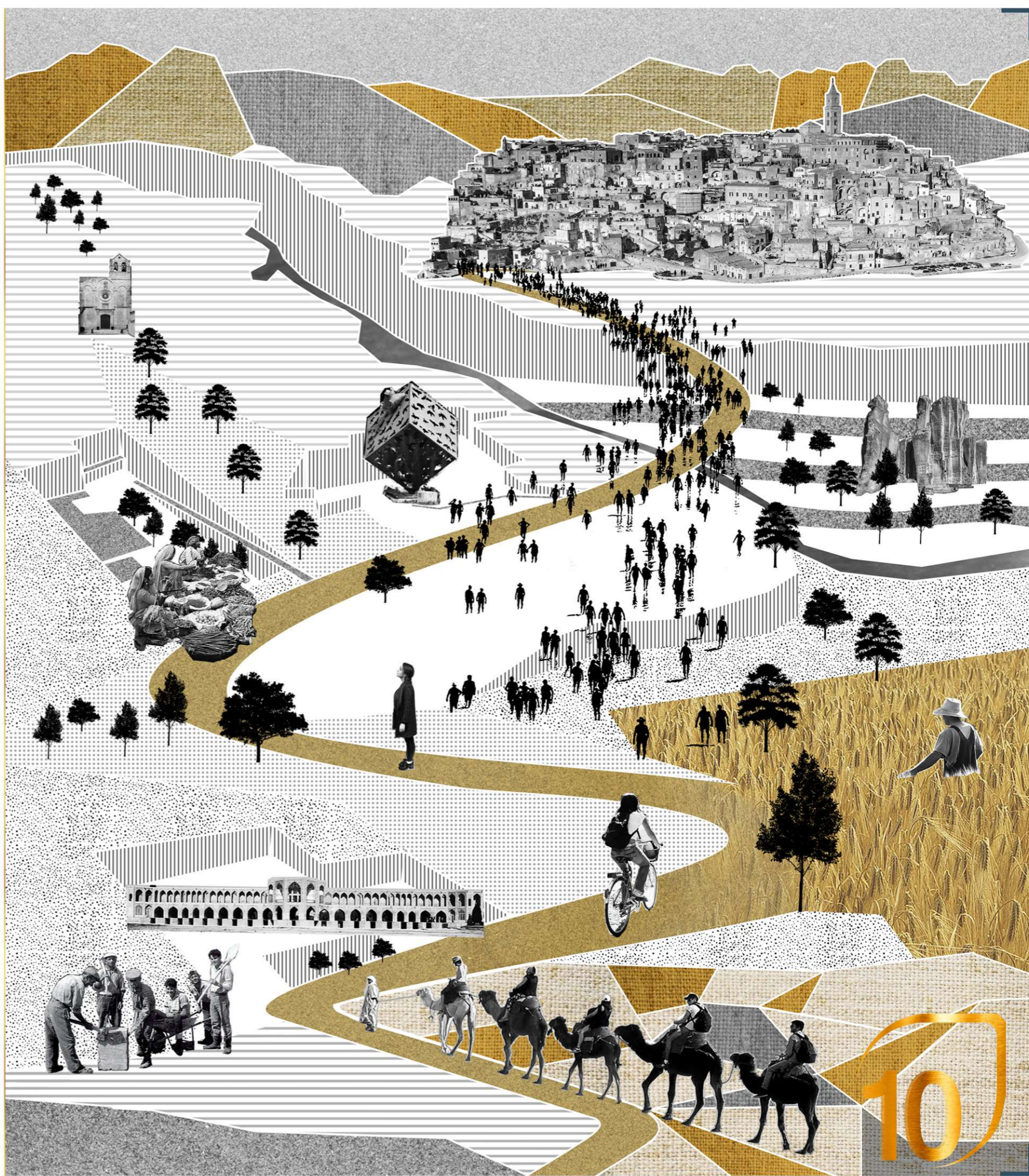
"I never use water like a barrier. I use water as a vital force. It moves, spark, has a nice sound, we can touch, we can play."

L.H.



"There is a difference between architects and landscape architects, they make objects, we do not, we make experiences"

L.H.



10