

+

Historical, present, and future Tokyo through  
the lens of assimilation.



+

2050 Comprehensive Plan of Tokyo  
enclave territory.

Country / City .....

University / School .....

Academic year .....

Title of the project .....

Authors .....

Tokyo Metropolitan Region, Japan

University of Pennsylvania / School of Design

2017-2018

Imin: Assimilation in a new era of immigration

Naeem Shahrestani







# PERFORMATIVE NATURE

Barcelona International Landscape Architecture Biennial

September 2018 **Barcelona**

SCHOOL PRIZE

X International Landscape Architecture Biennial

Máster d'Arquitectura del Paisatge -DUOT - UPC

ETSAB- Escola Tècnica Superior

d'Arquitectura de Barcelona

Avenida Diagonal, 649 piso 5

08028 Barcelona-Spain

## TECHNICAL DOSSIER

Title of the project Imin: Assimilation in a new era of immigration  
Authors Naeem Shahrestani  
Title of the course Tokyo Landscape Futures  
Academic year 2017-2018  
Teaching Staff Chrisopher Marcinkoski  
Department/Section/Program of belonging Landscape Architecture and Regional Planning  
University/School University of Pennsylvania School of Design

Written statement, short description of the project in English, no more than 250 words

"Send us your construction workers, your care givers, your store clerks."

The aging population is having a major impact on Japanese society today. From changes in housing, to declining birth rates, and to the disappearance of entire towns and villages, the demographics challenge is reshaping Japan like never before. Thus, Japan looks to immigration as a solution. If an increased influx to Japan is an inevitably necessary future, however, the government will need to make its case to the Japanese public.

In Japan, immigration (imin in Japanese) is absent in legal, media, and popular discourse, where it is replaced by euphemisms such as "entrants" and "foreign workers." This means that it is necessary to do as much as possible to prevent foreigners in general from staying long or settling down. With vacancy on the rise however, an aging population, and the GDP plummeting, Japan is quietly turning to immigration.

This collection of speculative work is not a proposal, rather, a lens into a possible future. Currently, the unprecedented volume of foreigners living in Japan are too readily seen as a threat by many of Japan's nationalists, thus, this fiction begs a simple question: can there be a degree of cultural acceptance and assimilation for multiethnic residents through performative landscape and urban interventions?

For further information

**Máster d'Arquitectura del Paisatge -DUOT - UPC**

T: + 34 93 401 64 11 / +34 93 552 0842

Contact via email at: [biennial.paisatge@upc.edu](mailto:biennial.paisatge@upc.edu)

Consult the web page <http://landscape.coac.net/>





The fear of dying alone.



The inevitable immigration.



The commodification of children.



The existence of vacancy.

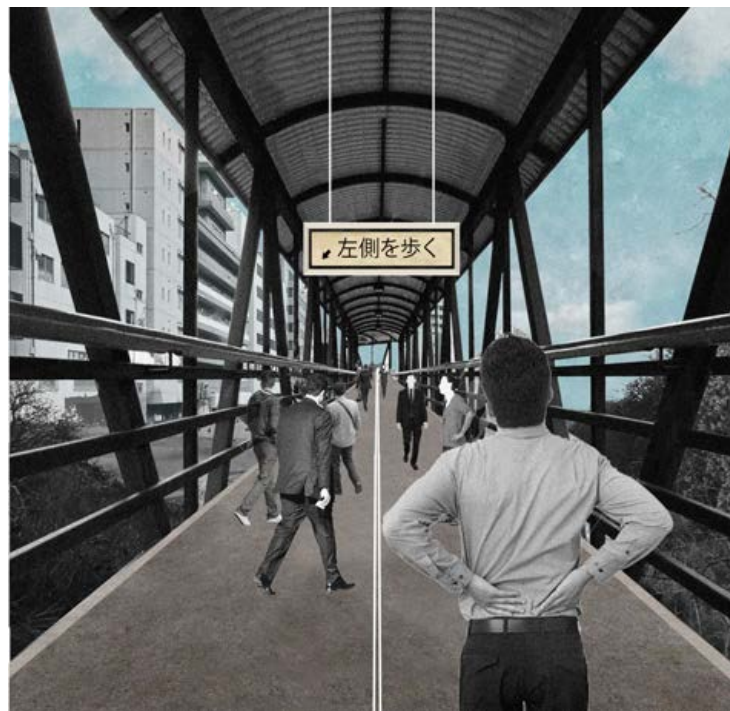


The reality of suicide.

+

The exaggeration of existing conditions in Tokyo.





Please walk with traffic.



Please keep it private.



Please come back again.



Please give them time.

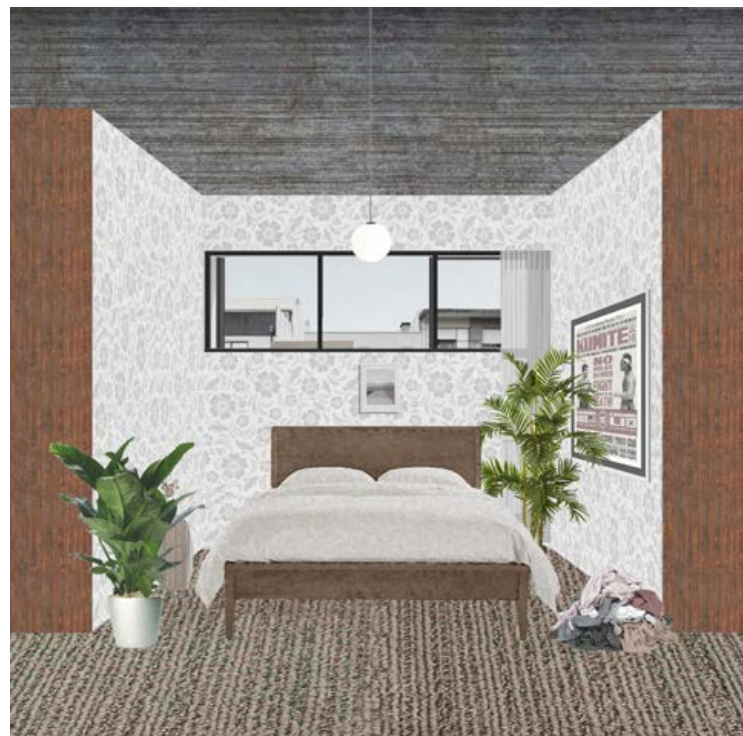


Please do it at home.

+

The perceived limitations of public space  
in local Tokyo.

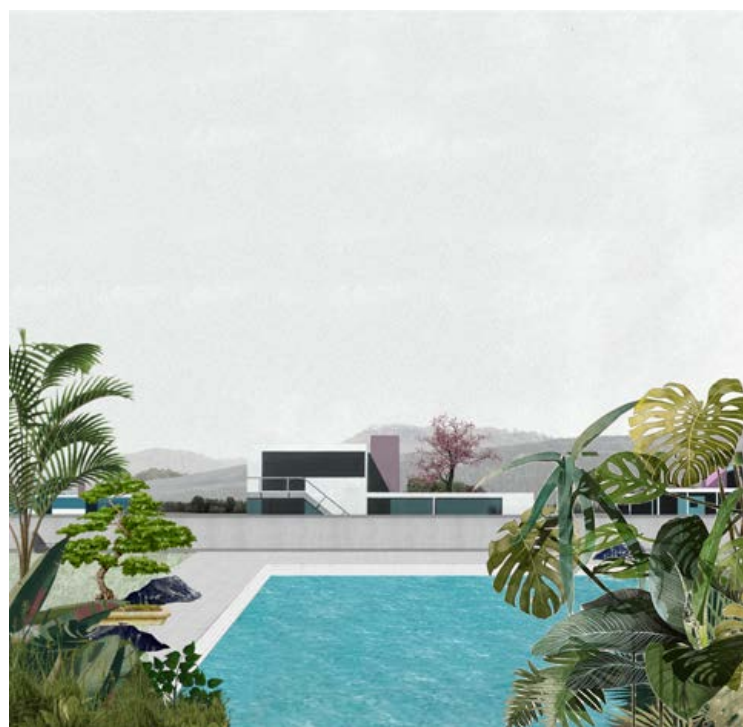




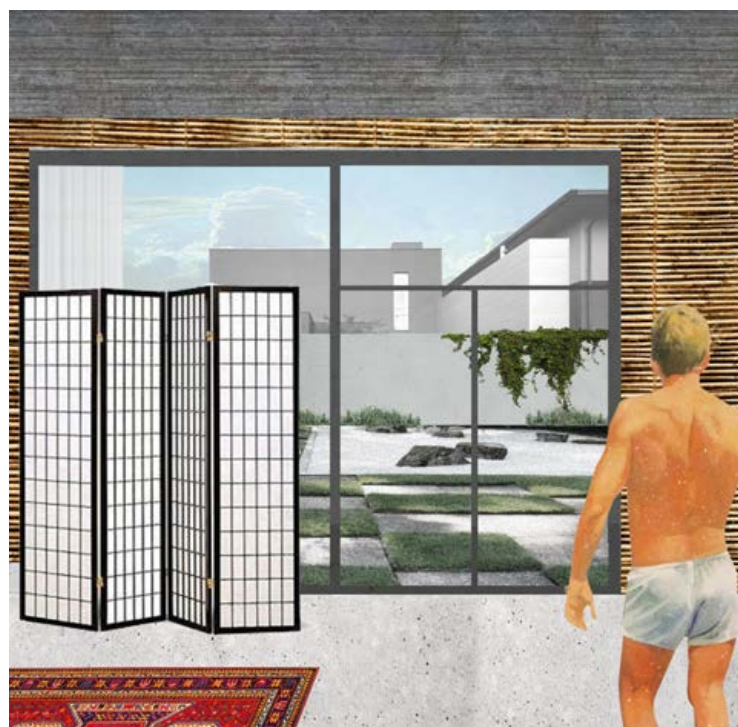
The enjoyment of unwinding.



The joy of staying in.



The delight in recreation.



The perks of relaxation.



The satisfaction of privacy.

+

The freedom of domestic space  
in enclave Tokyo.