

# REGRESSION

## STILL IN THE RIVER


As the global warming situation becomes more and more serious, water will invade our life in the most gentle and cruel way all the time.

People's Village

Chemical Village

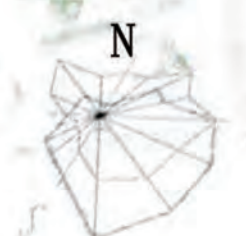
Nan Qiao Secondary School



 Light rain period

 Moderate rain period

 Torrential rain period



Country / City

University / School

Academic year

Title of the project

Authors

China Inner Mongolia Autonomous Region

Inner Mongolia Normal University

2017-2018

Still in the river

Zhang Sicong





# PERFORMATIVE NATURE

Barcelona International Landscape Architecture Biennial

September 2018 **Barcelona**

SCHOOL PRIZE

**X International Landscape Architecture Biennial**

Máster d'Arquitectura del Paisatge -DUOT - UPC  
ETSAB- Escola Tècnica Superior  
d'Arquitectura de Barcelona  
Avenida Diagonal, 649 piso 5  
08028 Barcelona-Spain

## TECHNICAL DOSSIER

Title of the project Also in the river Shanghai Fengxian Bridge Middle School Pocket Park renovation  
Authors Zhang Sicong  
Title of the course Graduation design of landscape design in four-year college  
Academic year 2017--2018  
Teaching Staff Li Me  
Department/Section/Program of belonging Landscape Design class/International  
University/School Institute of Modern Design art/Inner Mongolia Normal University

Written statement, short description of the project in English, no more than 250 words

As the global warming situation becomes more and more serious, water will invade our life in the most gentle and cruel way all the time. The project is located in Fengxian, Shanghai city, in order to achieve the goal of harmonious coexistence between sea and human beings, human beings, ecology, biology and the sea by the park renovation on the issue of climate warming and sea level rise.

For further information

Máster d'Arquitectura del Paisatge -DUOT - UPC

T: +34 93 401 64 11 / +34 93 552 0842

Contact via email at: [biennial.paisatge@upc.edu](mailto:biennial.paisatge@upc.edu)

Consult the web page <http://landscape.coac.net/>

# REGRESSION

## STILL IN THE RIVER

As the global warming situation becomes more and more serious, water will invade our life in the most gentle and cruel way all the time.

### HISTORY



### LOCATION



### [Prophase analysis]



### Hydrology Analysis

People's Village

Chemical Village

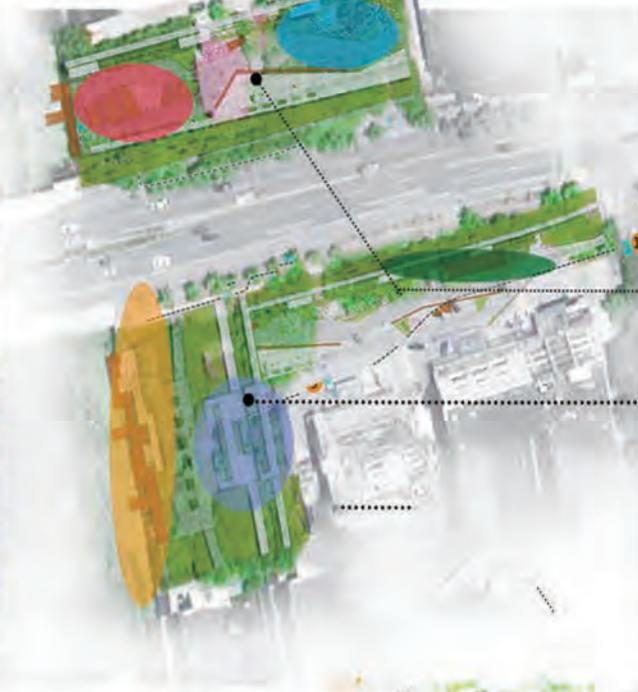
Nan Qiao Secondary School

### Hydrology Analysis

As one of the most developed areas of China's economy, the Yangtze river delta and the pearl river delta region have been plagued by typhoons for years. With the global climate change, the threat of rising sea level is more serious. Each year, 450 million people are affected by climate change.



### Comprehensive analysis



### Current situation Analysis



### Project site selection

Fongxian district is one of the People's Republic of China in Shanghai municipal district, the district is located in the southeast end of the Yangtze river delta. It is located in the south of Shanghai, Hangzhou Bay in the south, north of the Huangpu River, and Minhang District, eastern border with Pudong New Area, West and Jinshan and Songjiang Districts adjacent. Fongxian has 31.6 kilometers of Hangzhou Bay coastline, 13 kilometers along the Huangpu River coastline. Land area of 687.39 square kilometers and a population of 531,900 people (2016). It has two streets, eight towns, western ferry street, Fenapu street, the occurrence of the, in the city, Zhongliang, Jin hui, green village, zhe Lin, four group, bay town, jurisdiction and five development zone such as Shanghai comprehensive industrial development zone, [3] for the occurrence of the town government is located. The "nanqiao new town", one of the three new cities built during the 12th five-year plan period in Shanghai, is located in the south bridge, jinhui and qingcun area of fongxian.



Light rain period

- February, march, April  $\leq 30\text{mm/hour}$
- The water on the low road near the river bank is serious.



Moderate rain period

- May, July, July  $\leq 32\text{mm/hours}$
- When the rain is large, the influence will be extended to residential areas.



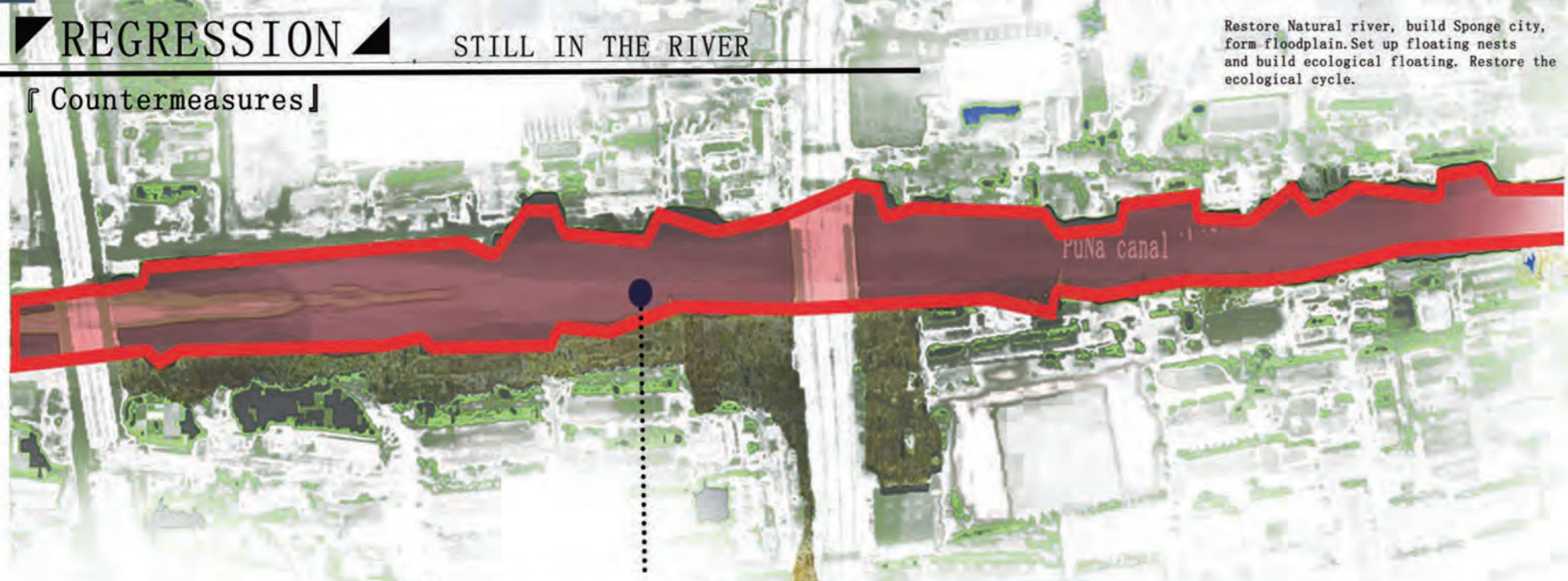
Torrential rain period

- January, June, August.  $\leq 36\text{mm/hours}$
- There is too much rain, the drainage system cannot bear, and the road vehicles may break down.

# REGRESSION

## STILL IN THE RIVER

### Countermeasures



Restore Natural river, build Sponge city, form floodplain. Set up floating nests and build ecological floating. Restore the ecological cycle.

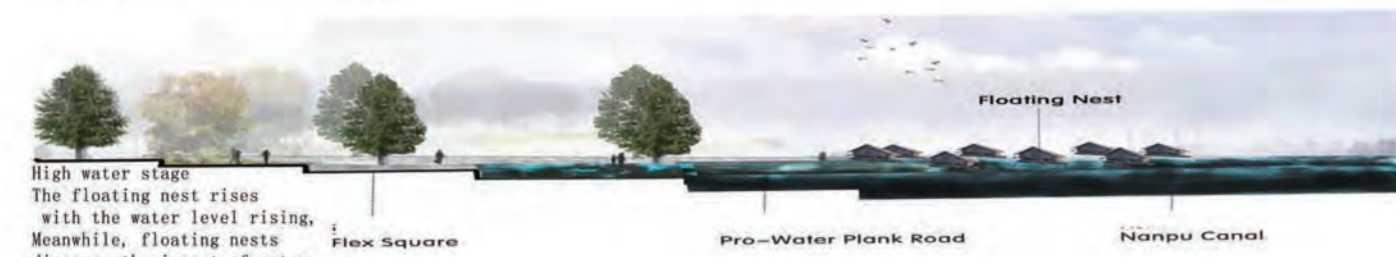
Planar thousand layer Cake type Multilayer Analysis chart



The normal water level  
This method satisfies the requirements of the resident poultry breeding



Two-stage water level  
Vegetation in such places as the ecological floating island provides nutrients



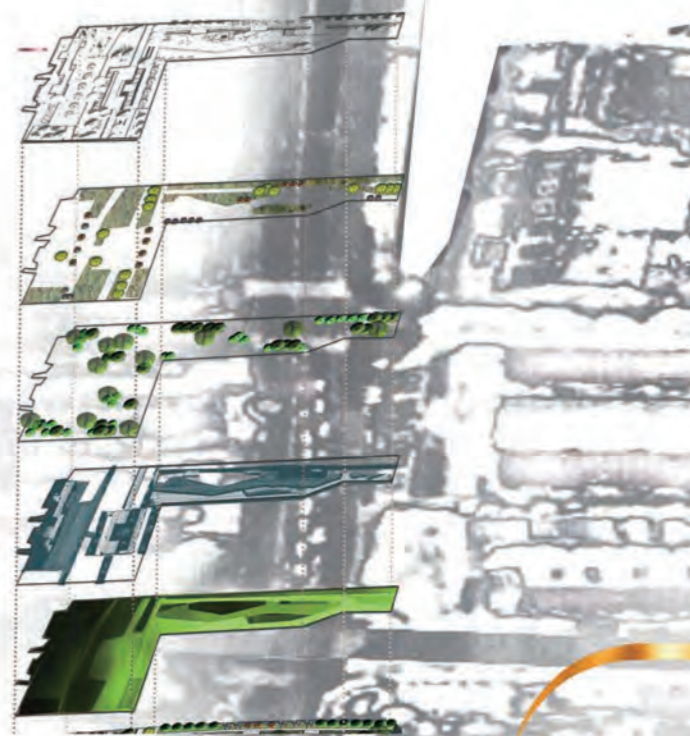
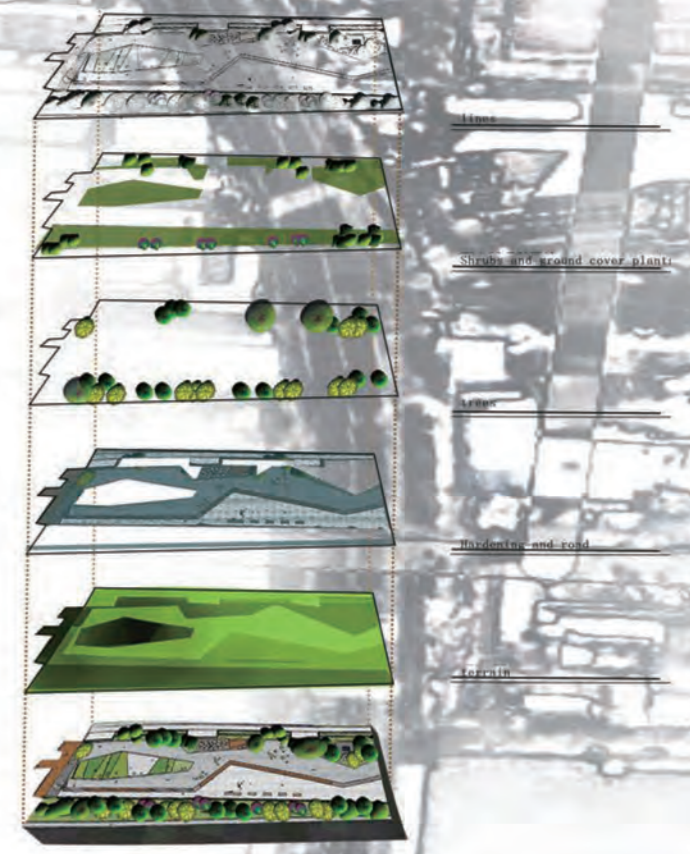
High water stage  
The floating nest rises with the water level rising. Meanwhile, floating nests disperse the impact of water. To protect the plants near shore, it also plays a role in preventing soil erosion.



Peak water stage



Floatwood is the base, straw: sediment 1:3



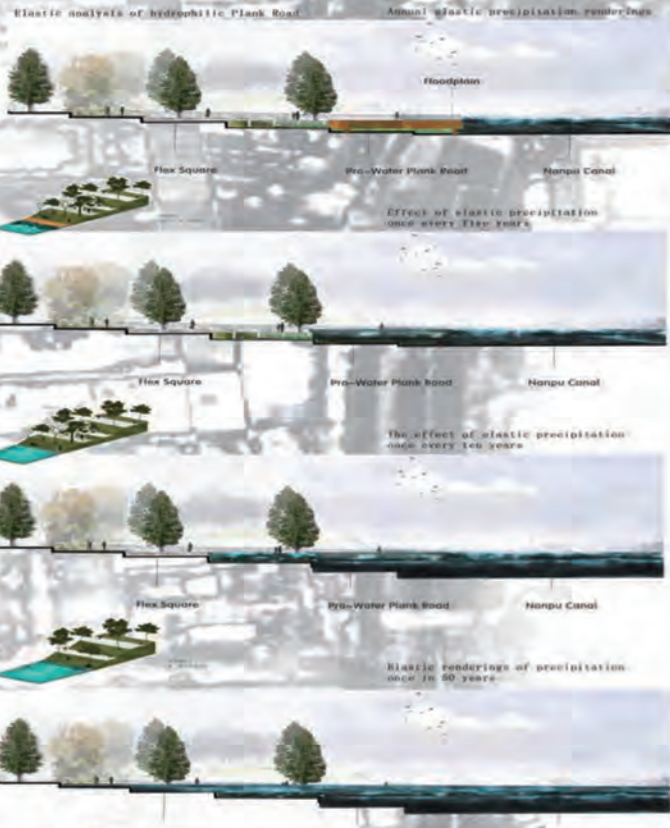
Analysis and Plant configuration



# REGRESSION STILL IN THE RIVER

## 『Elastic analysis of Square Plank Road』

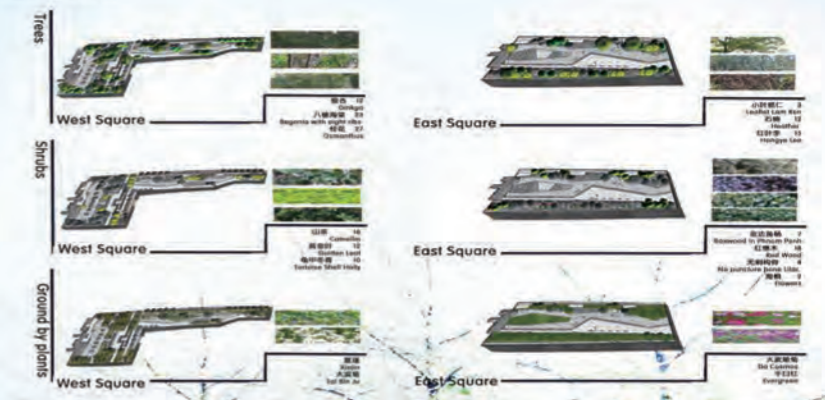
### Elastic analysis



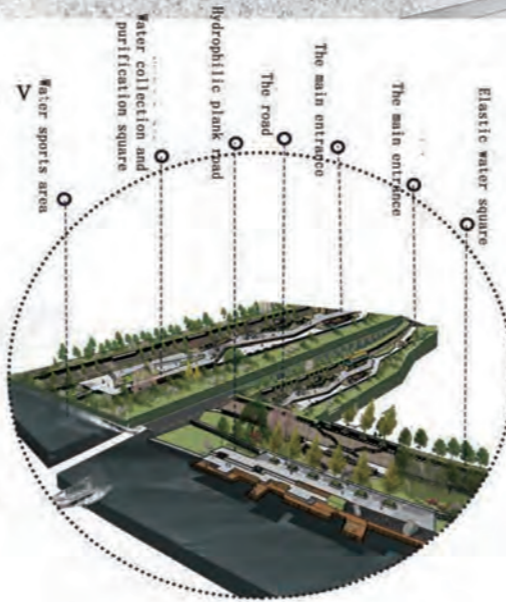
## 『Aerial view and Effect chart』



### Plant configuration



### Aerial view



### Construction principle of rainwater garden



### Functional partitions



### Effect chart

