



Country / City Norway/Oslo
University / School Oslo School of Architecture and Design
Academic year 2017
Title of the project Reindeer
Authors Akie Kono



PERFORMATIVE NATURE

Barcelona International Landscape Architecture Biennial

September 2018 **Barcelona**

SCHOOL PRIZE

X International Landscape Architecture Biennial

Máster d'Arquitectura del Paisatge -DUOT - UPC

ETSAB- Escola Tècnica Superior

d'Arquitectura de Barcelona

Avenida Diagonal, 649 piso 5

08028 Barcelona-Spain

TECHNICAL DOSSIER

Title of the project	Reindeer
Authors	Akie Kono
Title of the course	Master Diploma Project
Academic year	2017
Teaching Staff	Luis Callejas and Peter Hemmersam
Department/Section/Program of belonging	Institute for Urbanism and Landscape
University/School	Oslo School of Architecture and Design

Written statement, short description of the project in English, no more than 250 words

Designing landscape driven exhibition by Reindeer. Building knowledge of cultural landscapes by Reindeer.

How can we perceive cultural landscapes? Reindeer represents 'landscape', and this project spreads facts about reindeer through images, words, and a space.

Reindeer in the North are herded by minority groups. The reindeer in the South is known as Rudolph by many.

They are vulnerable for economic interests for the area such as resources or road construction, climate change hugely effecting on the North, social or political pressure, etc. These have been mostly caused by a majority of people from the outside of the pasture area, who do not have enough knowledge of reindeer herding.

'Reindeer' is not about spatial issues at a specific site, but about the perception of the landscape by the public.

This happens through documentation of the objects of Sami reindeer herders, also objects found in everyday life in Oslo, etc.

An exhibition design at DogA in Oslo, Norway, makes up this project. The words have been inspired by my stay with the herders.

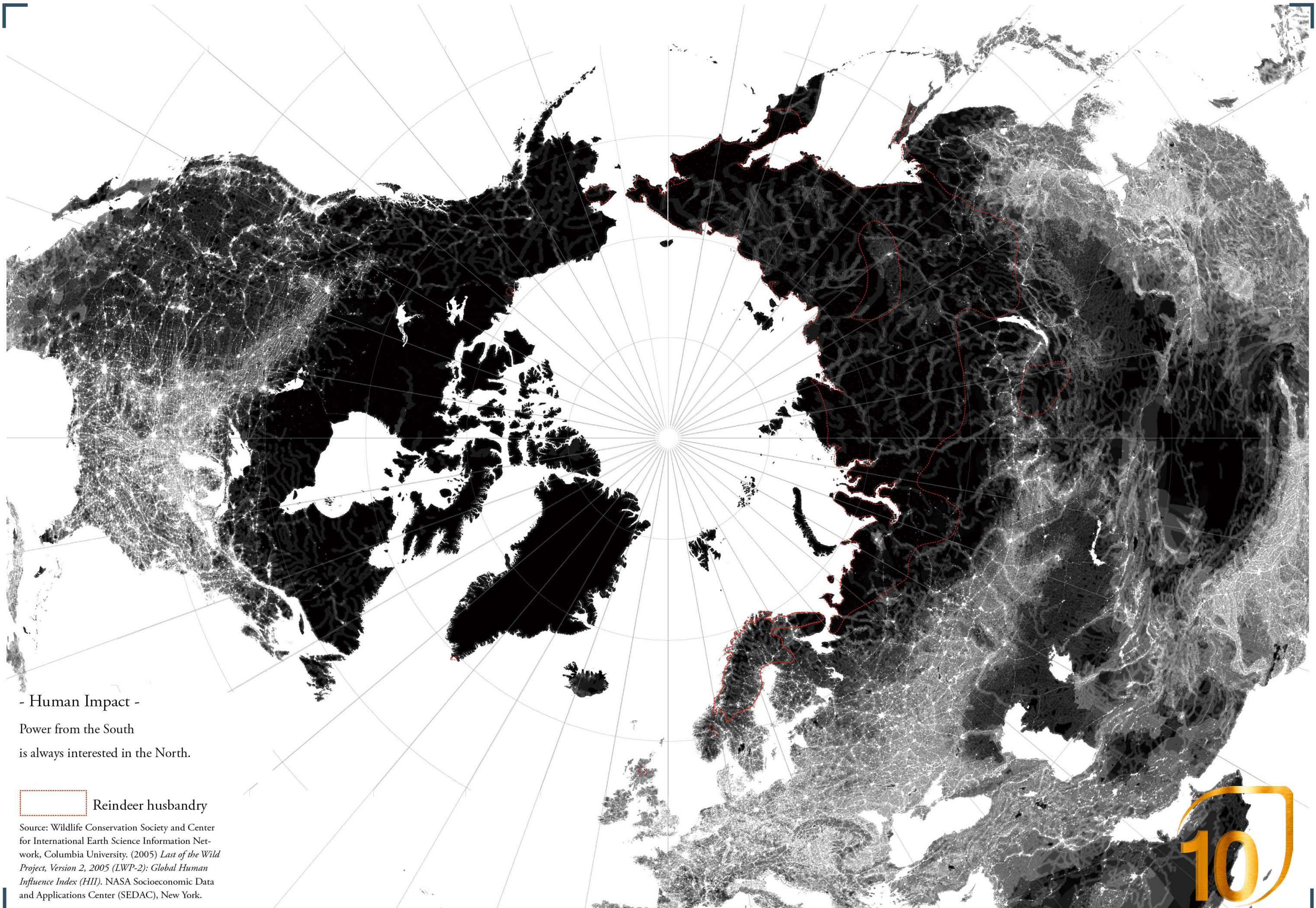
For further information

Máster d'Arquitectura del Paisatge -DUOT - UPC

T: + 34 93 401 64 11 / +34 93 552 0842

Contact via email at: biennial.paisatge@upc.edu

Consult the web page <http://landscape.coac.net/>

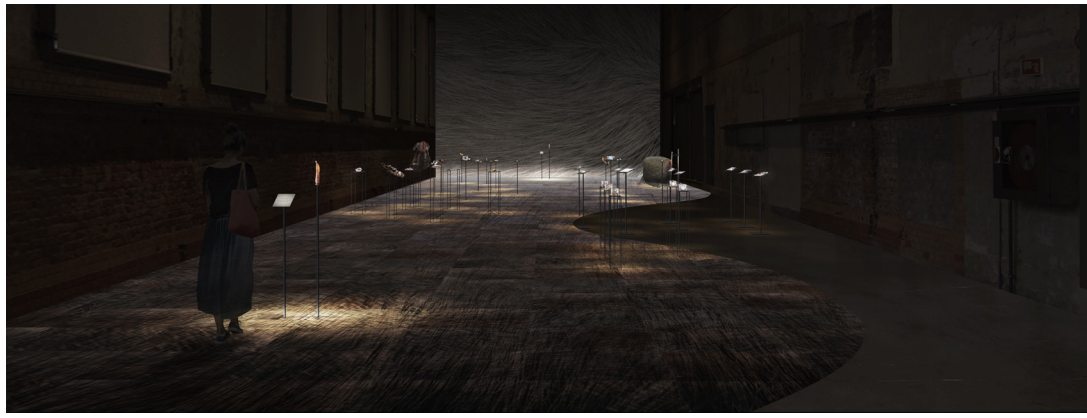


- Human Impact -

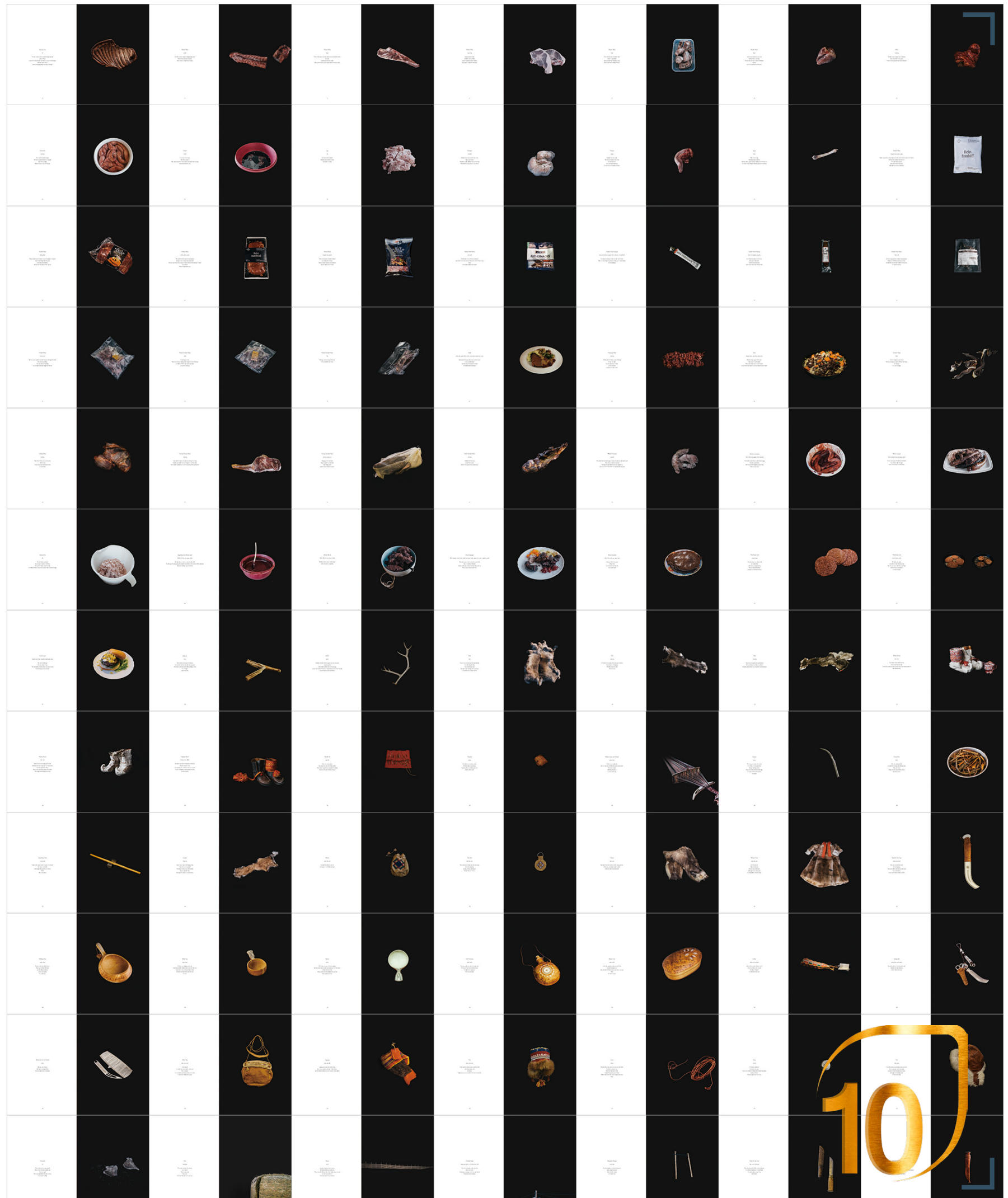
Power from the South
is always interested in the North.

 Reindeer husbandry

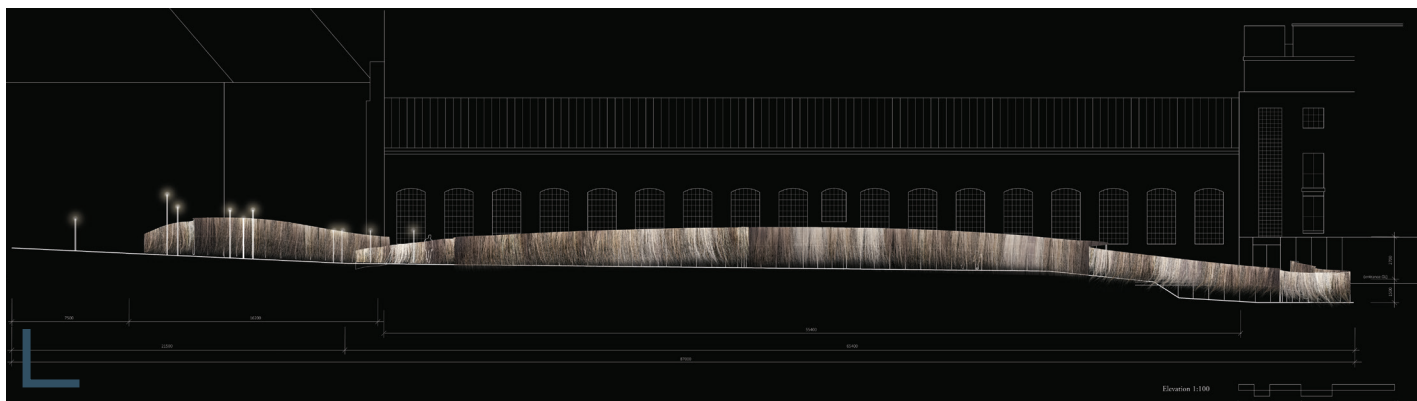
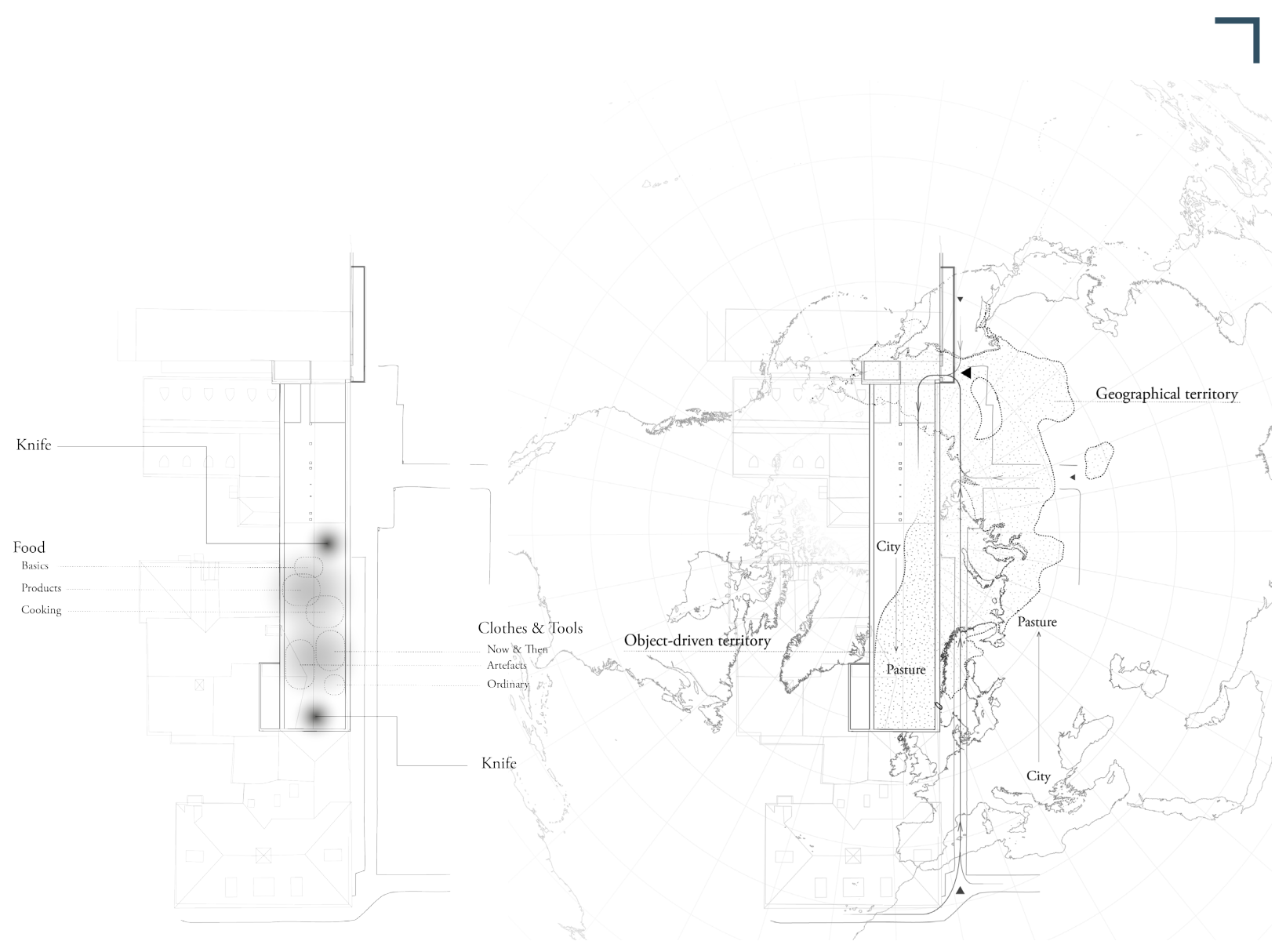
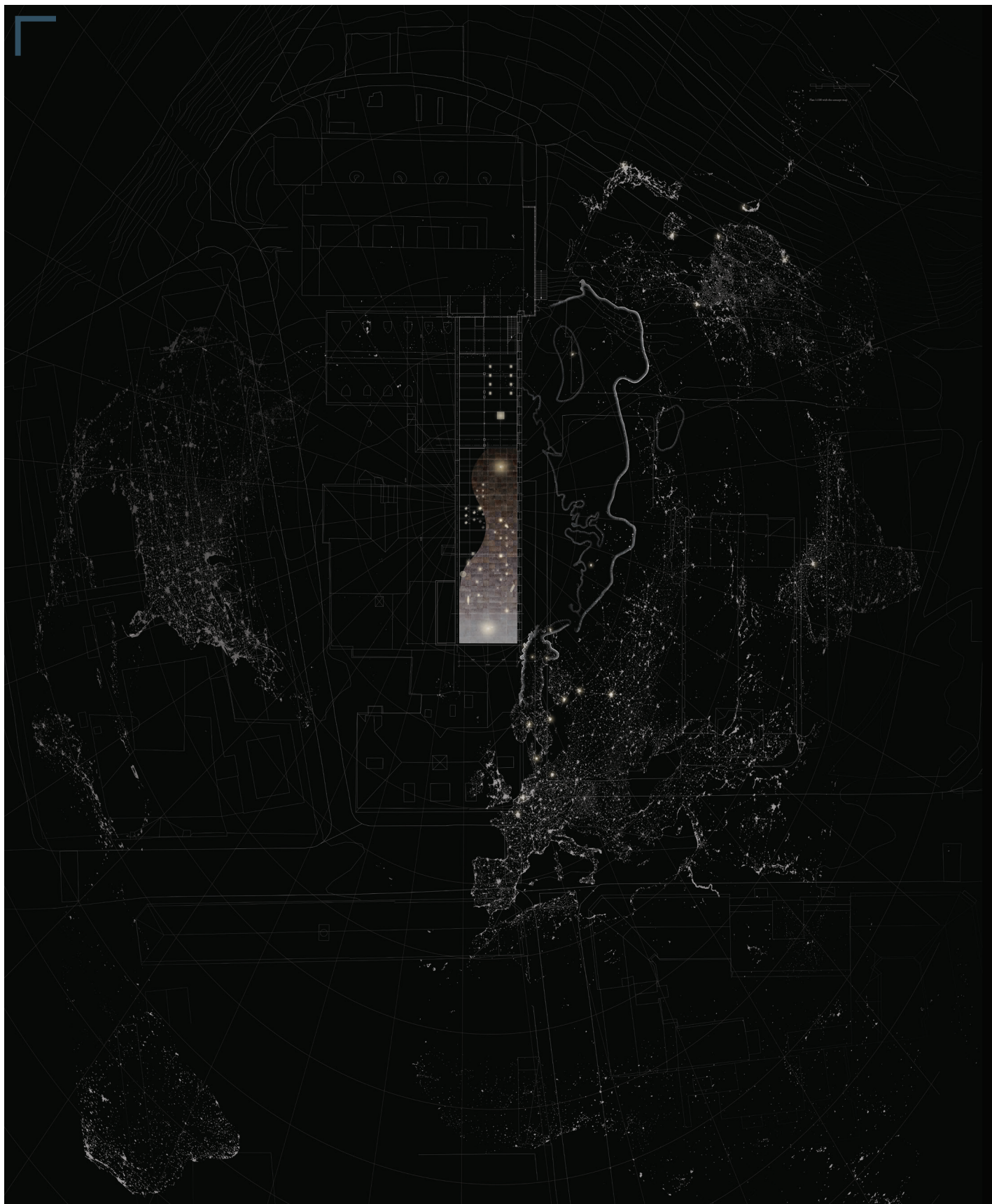
Source: Wildlife Conservation Society and Center for International Earth Science Information Network, Columbia University. (2005) *Last of the Wild Project, Version 2, 2005 (LWP-2): Global Human Influence Index (HII)*. NASA Socioeconomic Data and Applications Center (SEDAC), New York.



The words are designed
for generating new perspectives,
which were inspired by the stay with herders,
so it's the truth.



10



- Colour -

The colour vary from white to brown.
The retailers believe that it depends on seasons, while the herders say that it is their nature.
It is still mystery.
The clear thing here is a gradation of skin floor can lead visitors from brown to white,
like the migration of reindeer, travelling various situations of pastures,
enhancing a vista of the exhibition, from the knife to the knife

Knife and the Case

skin, yarn, birch, steel

Every herder has their own knife, hanging on their belt.
Knife is still their necessity although it is not only used for slaughtering reindeer.
The use is for cutting anything except a tie between reindeer and herders.