

ETNA

THE ERRATIC SICILIAN GARDEN

Etna, Italy

The Versailles/Marseille landscape architect school (ENSP)

2017

Etna, the erratic sicilian garden.

Clément Lecuru





PERFORMATIVE NATURE

Barcelona International Landscape Architecture Biennial

September 2018 **Barcelona**

SCHOOL PRIZE

X International Landscape Architecture Biennial

Máster d'Arquitectura del Paisatge -DUOT - UPC

ETSAB- Escola Tècnica Superior

d'Arquitectura de Barcelona

Avenida Diagonal, 649 piso 5

08028 Barcelona-Spain

TECHNICAL DOSSIER

Etna, the erratic Sicilian garden

Clément Lecuru

DPLG (master degree)

2017

Mongi Hammami, Bruno Tanant

The Versailles/Marseille landscape architect school (ENSP)

What is the Sicilian volcanic landscape? when was the eruption that created the soil that the trees colonized, the bushes invaded, the lichen covered, and that the travelers tread?

´Etna, the erratic Sicilian garden tells the volcanic gigantic landscape by the deep harmony between the microcosm and the macrocosm. An atypical garden crossed by the lava streams from different times which provoke the travellers imagination.

The grounds are moulting, to become a new substrate, a new garden. The place reflect the complexity of geological time as fragments of time in their own path slicing the Etna slopes in successive horizons. These times of the volcano collide with the precipitation of mass tourism and urban expansion. Forms of erosion appear on unlocated places : We must invent new logics of travelling to the top that follow those of the landscape; Sensitize inhabitants to their habitat through a landscape enhancement project. There is a devious way of going to Etna; by meeting and resonating the elements of the travel (obstacles, potential of destruction, potential of a birth of the landscape, inhabitants and tourists ...). The slope here is the chronological escalation of the strata and gardens of the volcano. It is the landscape fragmented by the metabolism of Etna, its phenomenology. We must go back to a pleasure of the long time, the human pace, restore the appetite of landscapes that teach us something about their story.

From the top to the base, how to make the ´longitudinal, ´transversal. In the following project, the garden must trigger the journey to the landscape ...

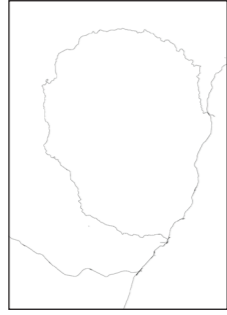
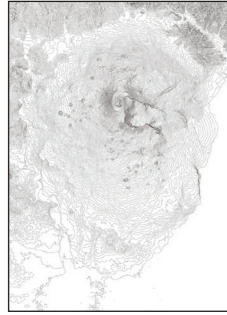
For further information

Máster d'Arquitectura del Paisatge -DUOT - UPC

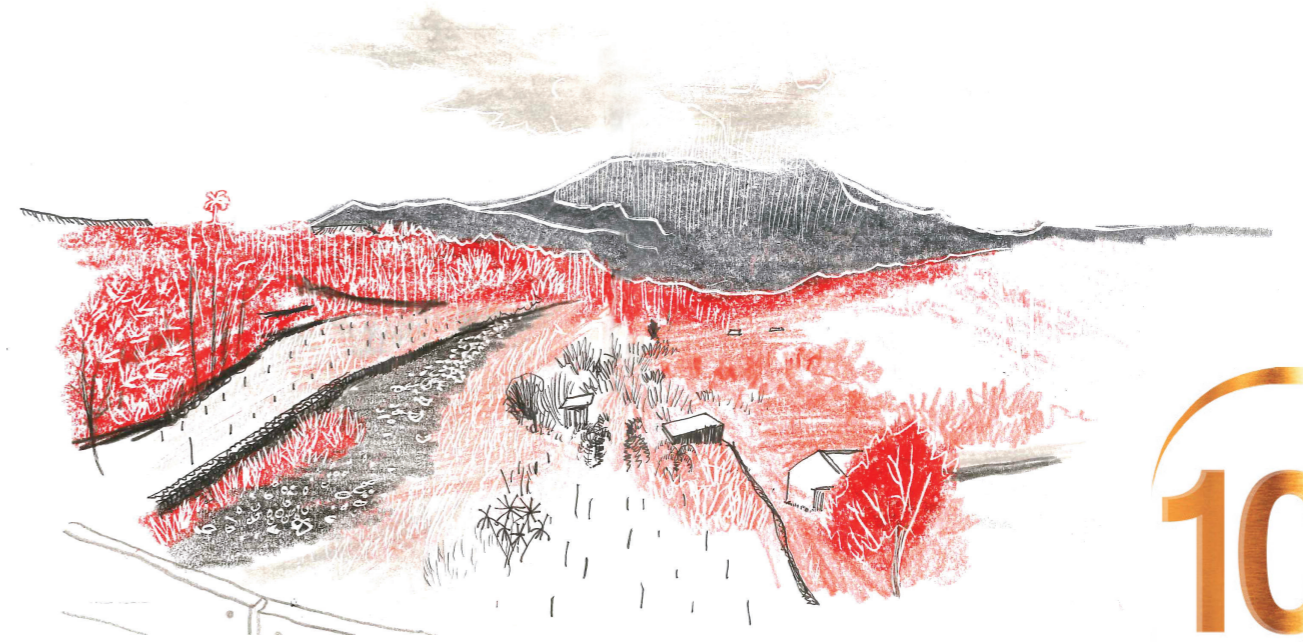
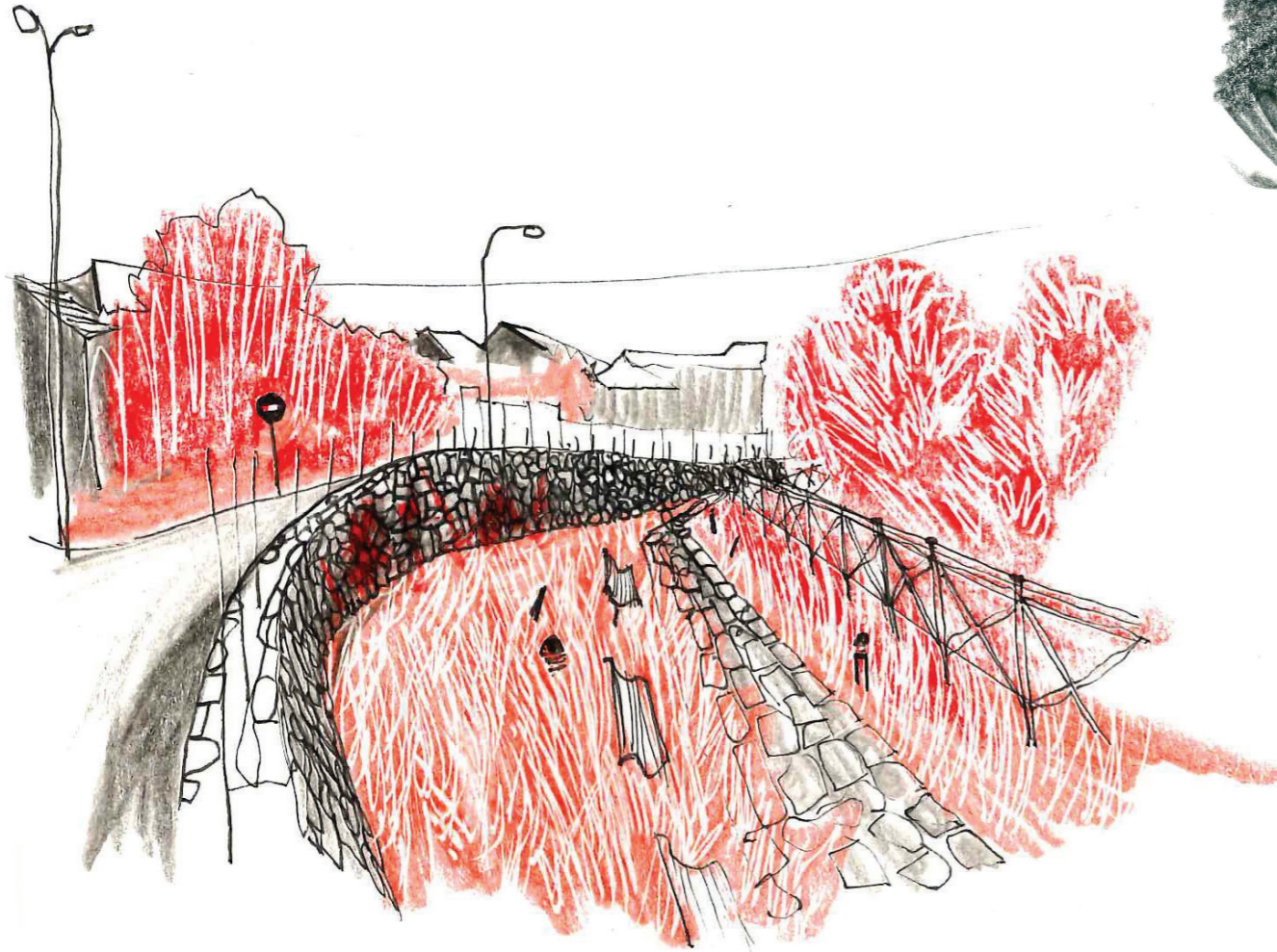
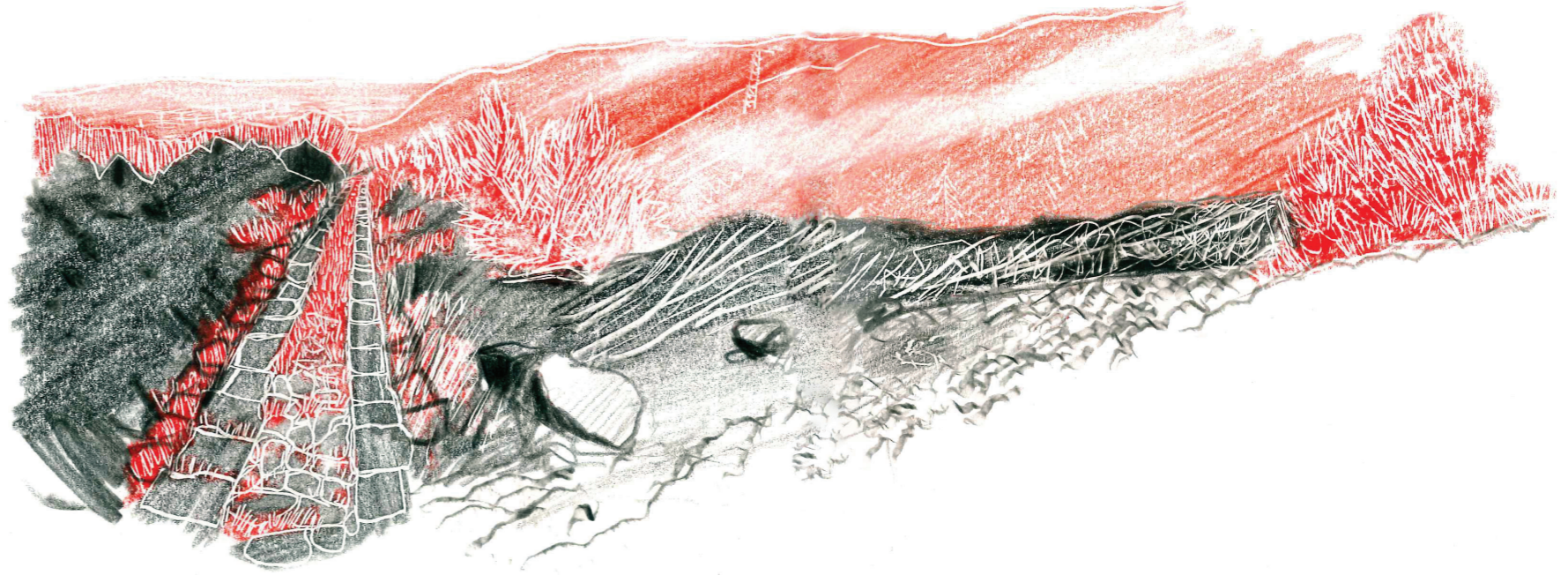
T: + 34 93 401 64 11 / +34 93 552 0842

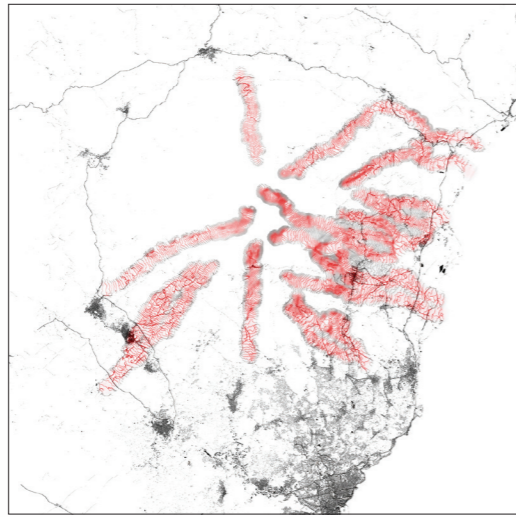
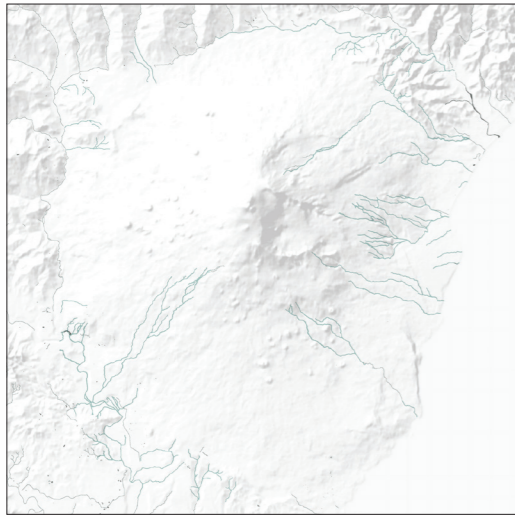
Contact via email at: biennial.paisatge@upc.edu

Consult the web page <http://landscape.coac.net/>

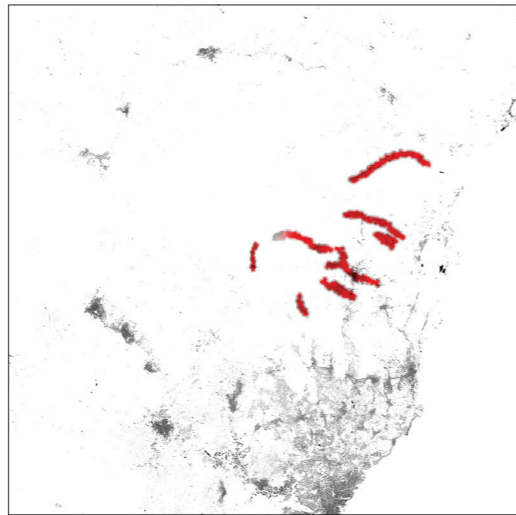
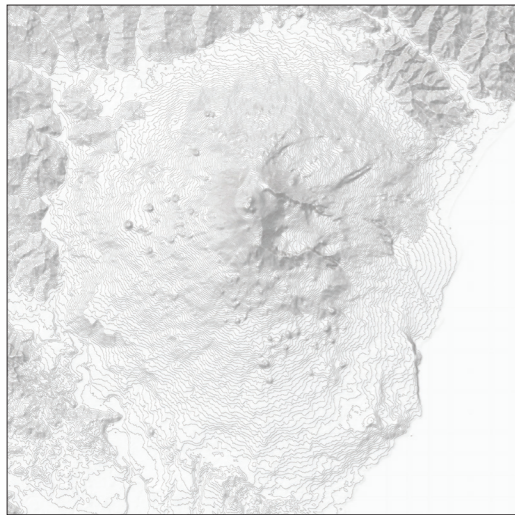


Left to right :
Topography
1 railways
2 highways and
primary roads
3 connections
between villages
4 secondary roads
5 residential areas
6 pedestrian ways

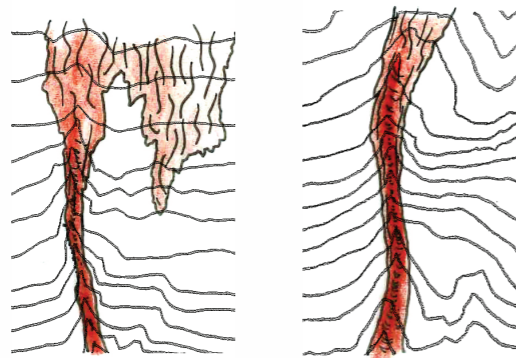
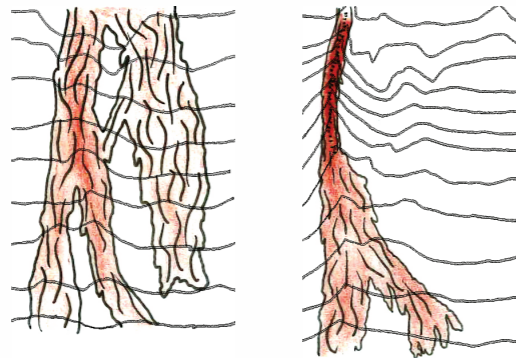
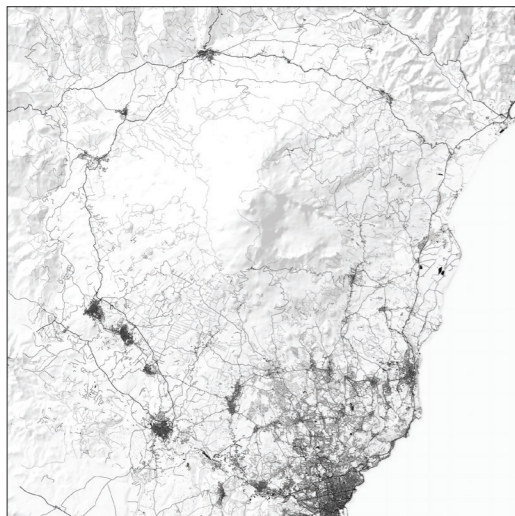




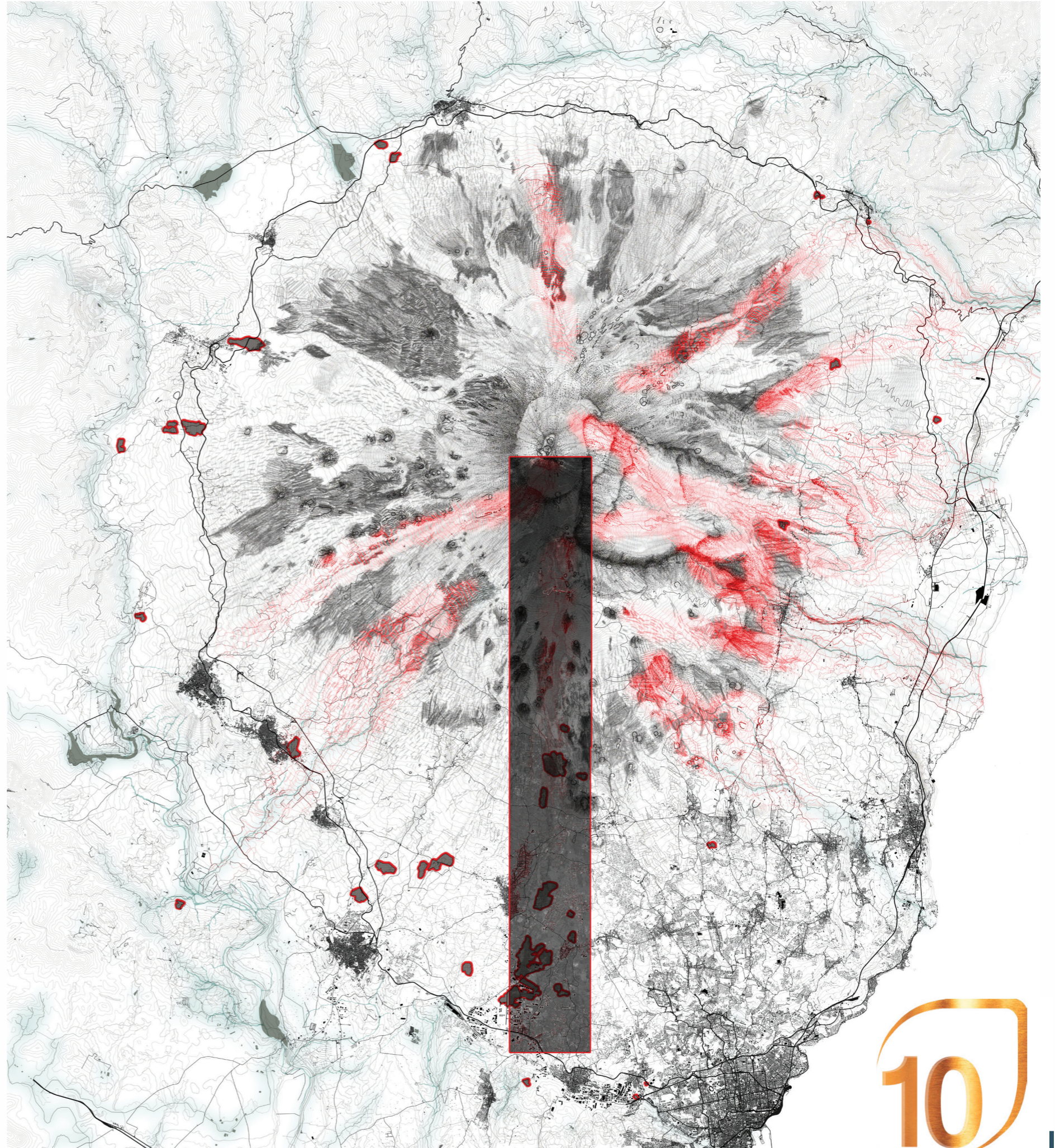
4

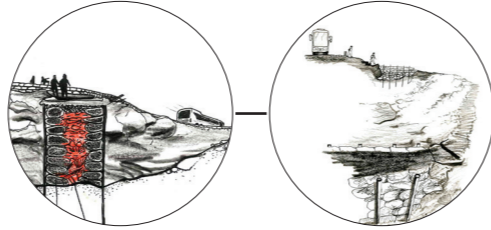
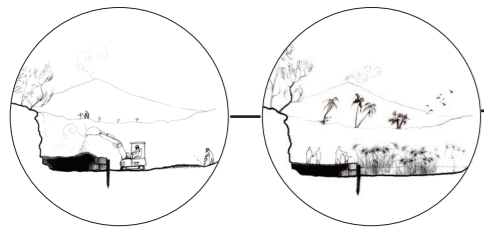
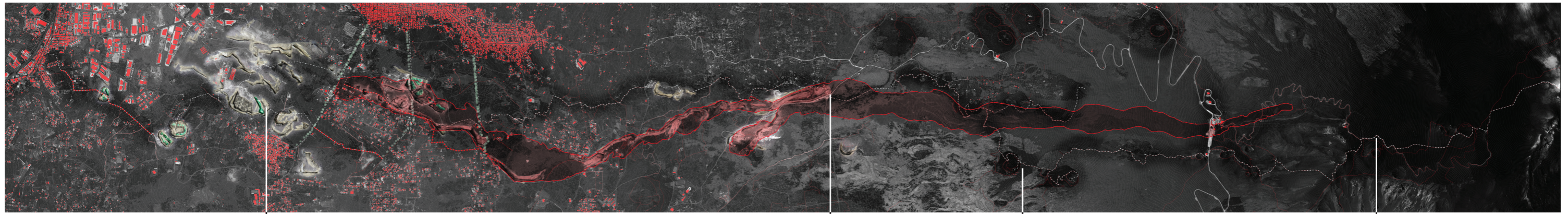


5



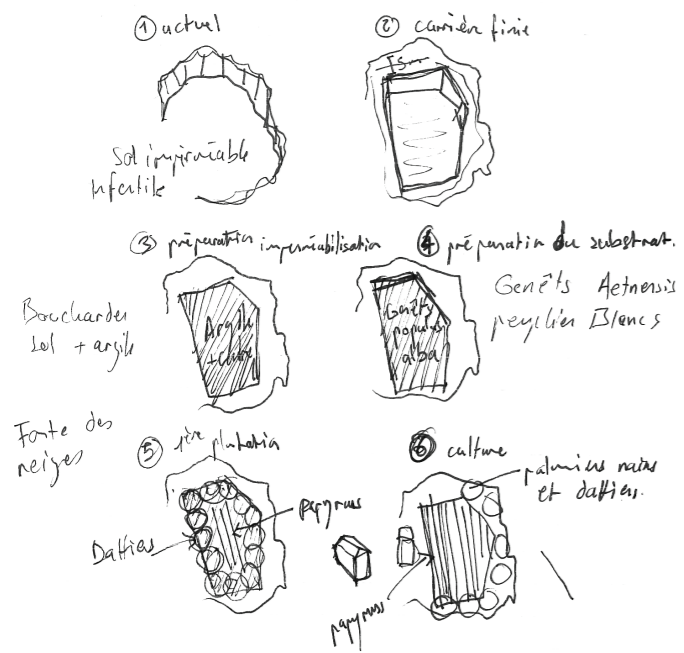
▲The lava parc : -1 valley and stream
 -2 topography -3 constructions -4 large valley -5 canyons.
 Right : Map of the potential lava parcs on Etna and chosen site.



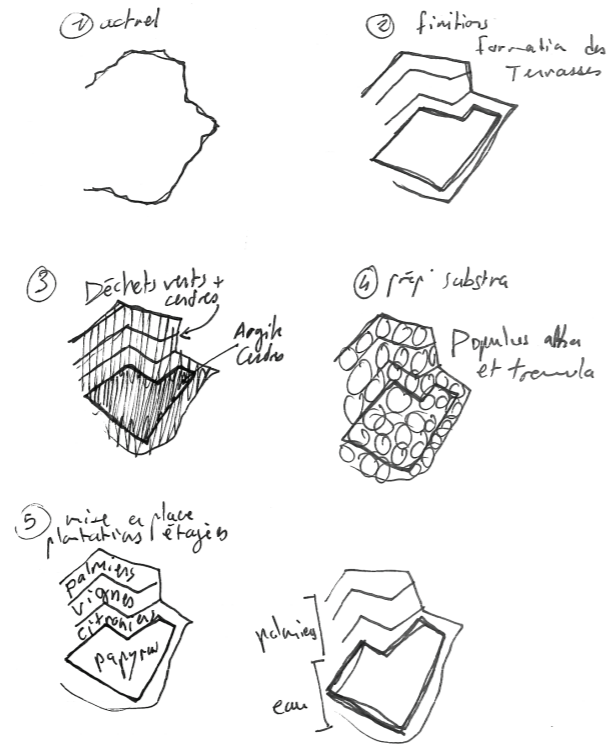


Passage des biotopes :

I. Thermo-méditerranéen Bas.



II. Thermo-méditerranéen Haut.



View of the evolution of an ancient quarry into a watered parc : 1-Excavating in order to create a river bed for the future eruption and shade spots before the eruption 2-Crushing the soil and blending with clay and poor substrate for native plants 4-Installation of the native plants(Populus alba, Genista aetnensis, ...), 5-After the first 5 winters the snow has melt and the rain water is retained 6-Plantation of the palms and papyrus, connexions between quarrys make the «Sapienza Lava Parc».

