



## A park at the confluences of Brest Metropolis

Interrogate urban afforestation in  
the city of XXI<sup>eme</sup> century

Country / City France  
University / School The Versailles/Marseille landscape architect school (ENSP)  
Academic year 2017  
Title of the project A park at the confluences of Brest Metropolis  
Authors Tristan Geffray



# PERFORMATIVE NATURE

Barcelona International Landscape Architecture Biennial

September 2018 **Barcelona**

SCHOOL PRIZE

X International Landscape Architecture Biennial

Máster d'Arquitectura del Paisatge -DUOT - UPC  
ETSAB- Escola Tècnica Superior  
d'Arquitectura de Barcelona  
Avenida Diagonal, 649 piso 5  
08028 Barcelona-Spain

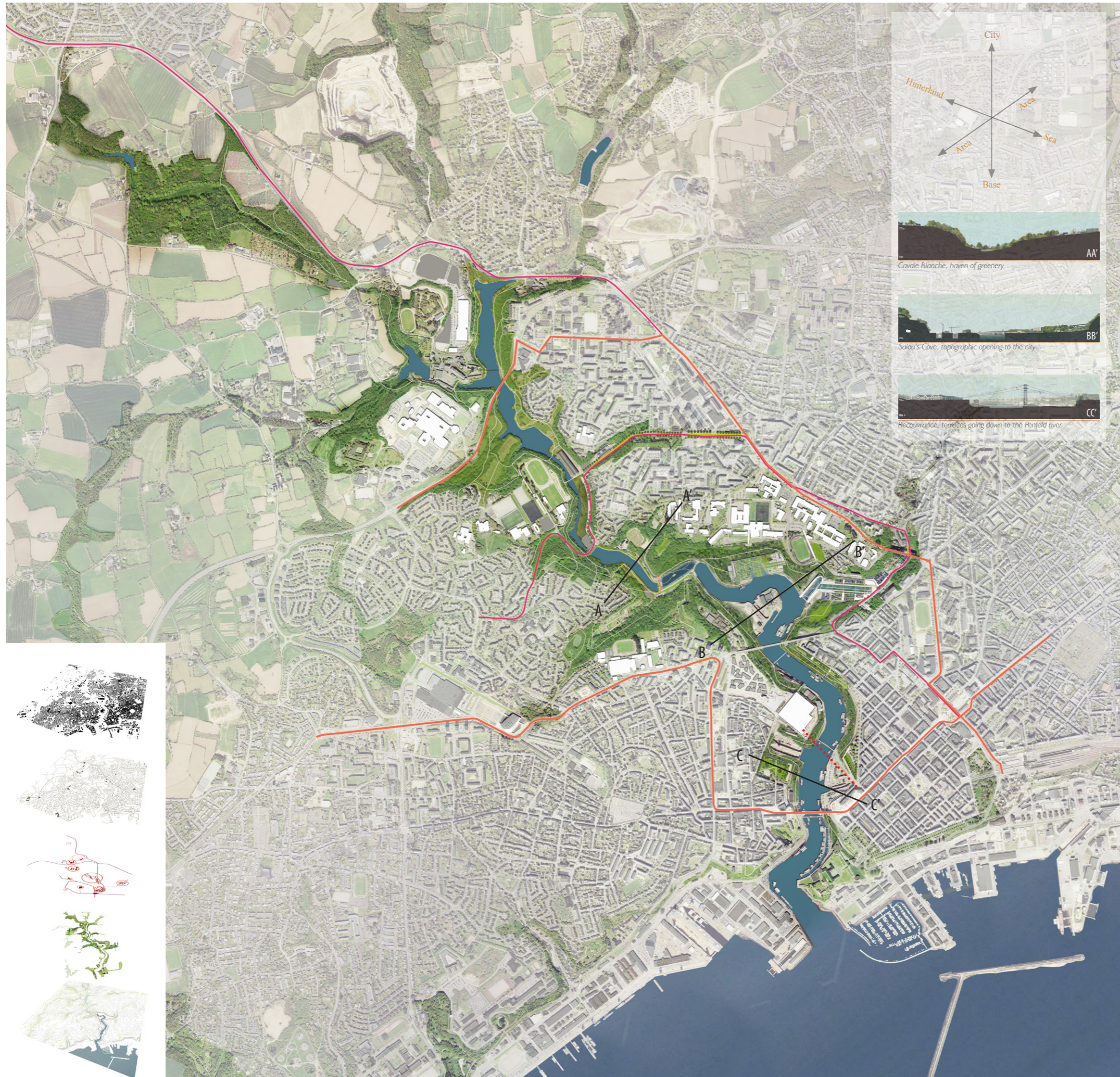
## TECHNICAL DOSSIER

Title of the project	A park at the confluences of Brest Metropolis
Authors	Tristan Geffray
Title of the course	Personnal end of studies work - DPLG (master degree)
Academic year	2016/2017
Teaching Staff	Henri Bava
Department/Section/Program of belonging	
University/School	ENSP Versailles/Marseille

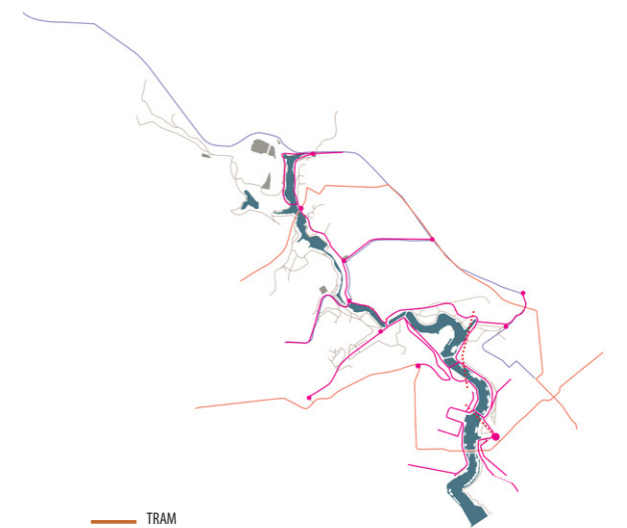
Written statement, short description of the project in English, no more than 250 words

How can the city of Brest resume possession of Penfeld river today? And how to take into account not only the military background of the place but also its historical and public life and the expression of its vegetation? How to reveal and create a new landscape in the heart of a seaside metropolis? All these questions are incentives to build up a new reflection based on different points. Reinvesting the various spaces dedicated to the military, concealed, sterilized places but also places of nature preserved from confinement. Spaces of the sublime by the confrontation of our gaze upon the history and the mighty infrastructure. How to reveal and reinterpret the wealth and diversity of the scenery already there to bring them into dialogue with contemporary concerns and uses? Brest seems to be losing momentum despite its communication and economy linked with the sea. In the future it will be necessary to look back towards the hinterland left behind our back. The river represents a three-dimensional space which is both a surface and a transition between fresh and salt water, between an inside and an outside, between a split city and the cocoon of its green growth. Can its exuberant vegetation linked to the soil but especially to the climate be a possible even if neglected identity for the city? The botanical inspiration mixed with a historical, urbanistic but also pragmatic vision, can all these elements lead to a new attractive landscape fo the public life? How can the poetical atmosphere of La Penfeld be at the root of a new composition of Brest and its metropolis?

For further information  
**Máster d'Arquitectura del Paisatge -DUOT - UPC**  
  
T: + 34 93 401 64 11 / +34 93 552 0842  
Contact via email at: [biennal.paisatge@upc.edu](mailto:biennal.paisatge@upc.edu)  
Consult the web page <http://landscape.coac.net/>

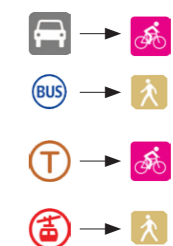


## Transport / Mobility

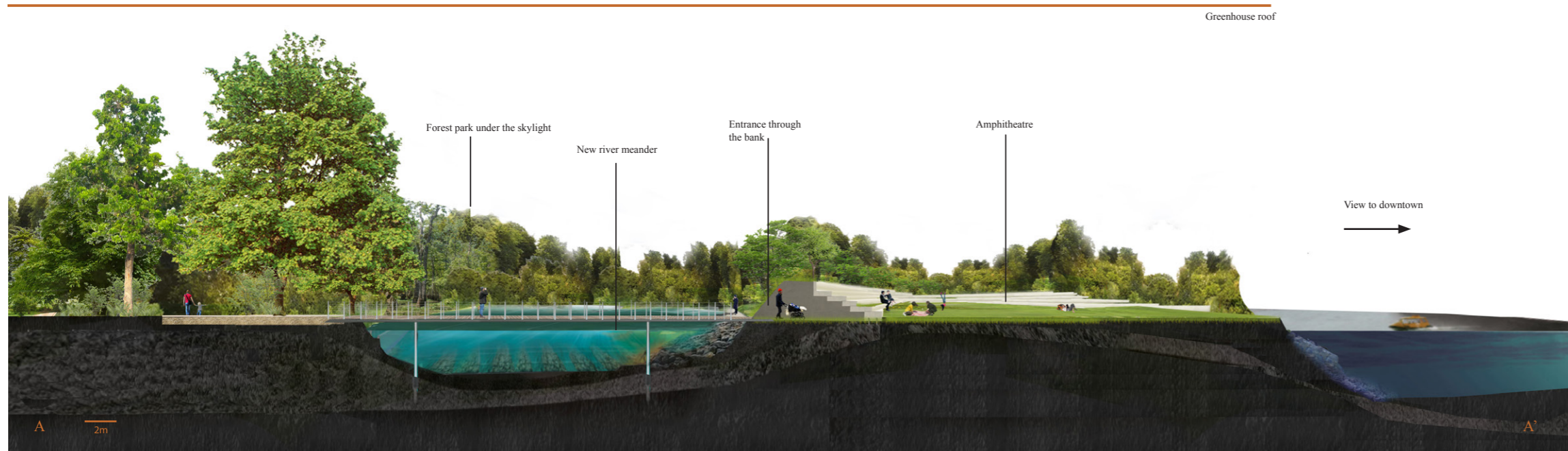
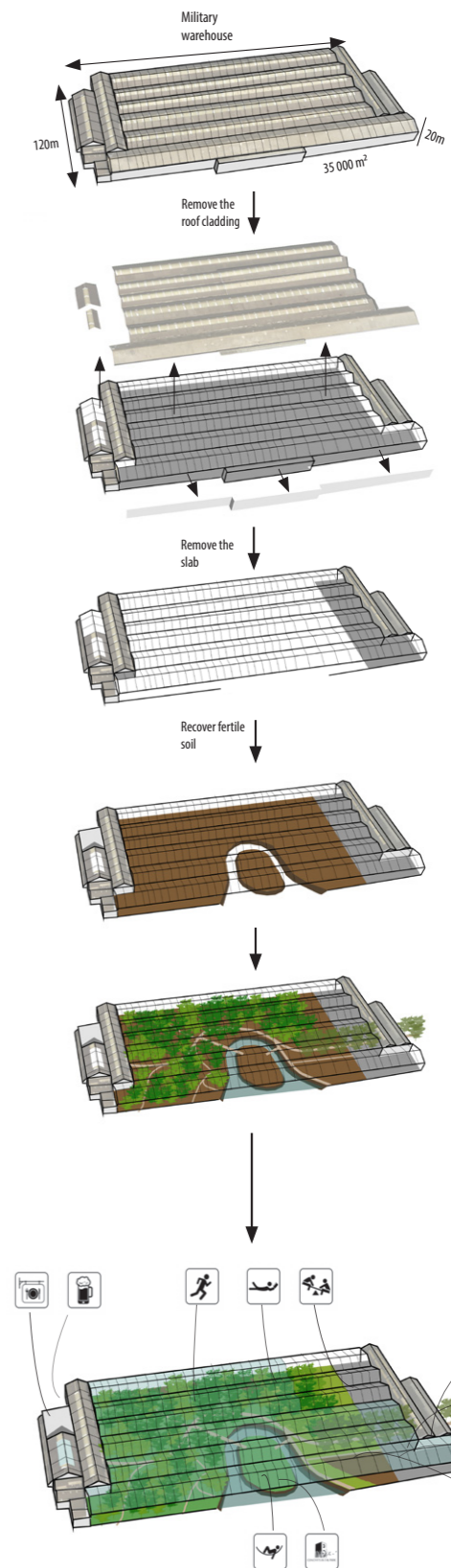


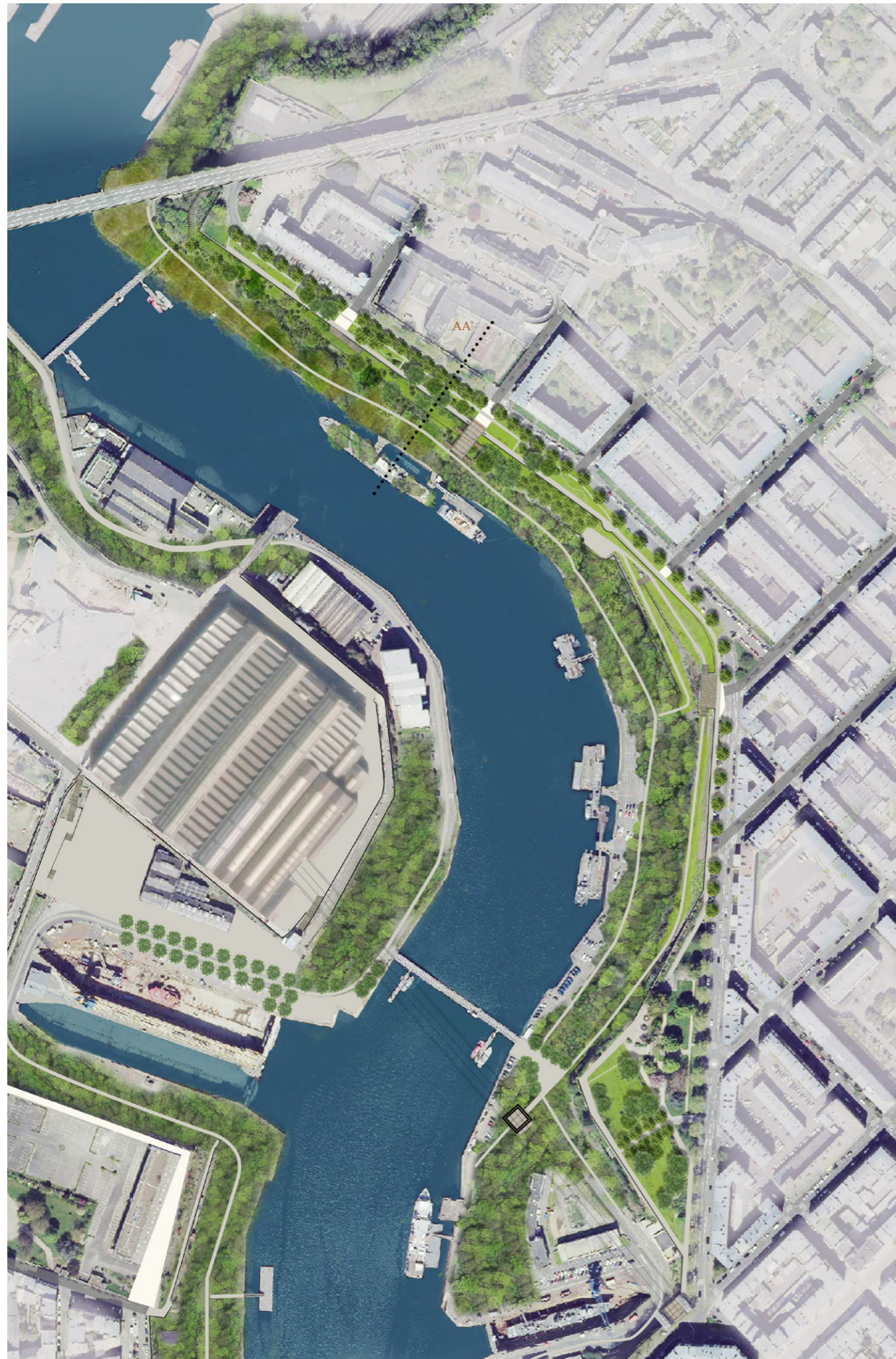
- TRAM
- BUS
- Cable car
- Pedestrian/Bicycle
- Pathway

● Park entrances = possibility to change travel modes



10





**315** hectares of park

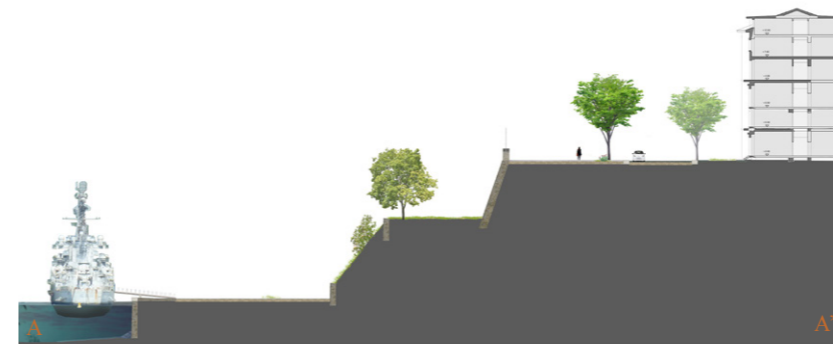
**86** hectares of park generated in the downtown

**35** hectares turned into permeable soil

**2,5** hectares of filtering gardens created

**10** km of reappropriated walls

**3** km of renaturalized river banks

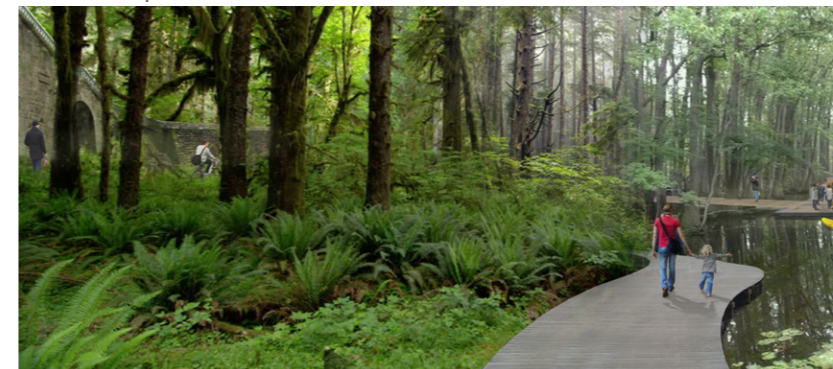


Today



Project

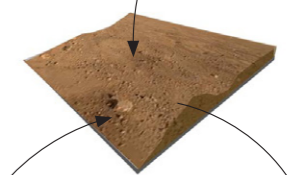
The new river banks park in the downtown



Remove the slab



Green wastes



Shape - recreate the soil

Excavated materials from the metropolis

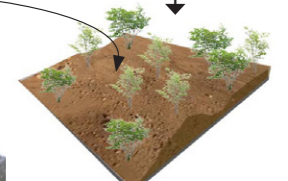
Decontamination



FOREST PLANTS

Pioneer then climax vegetals species

Undergrowth seeds



Plant

Forest management 10 -20 years

