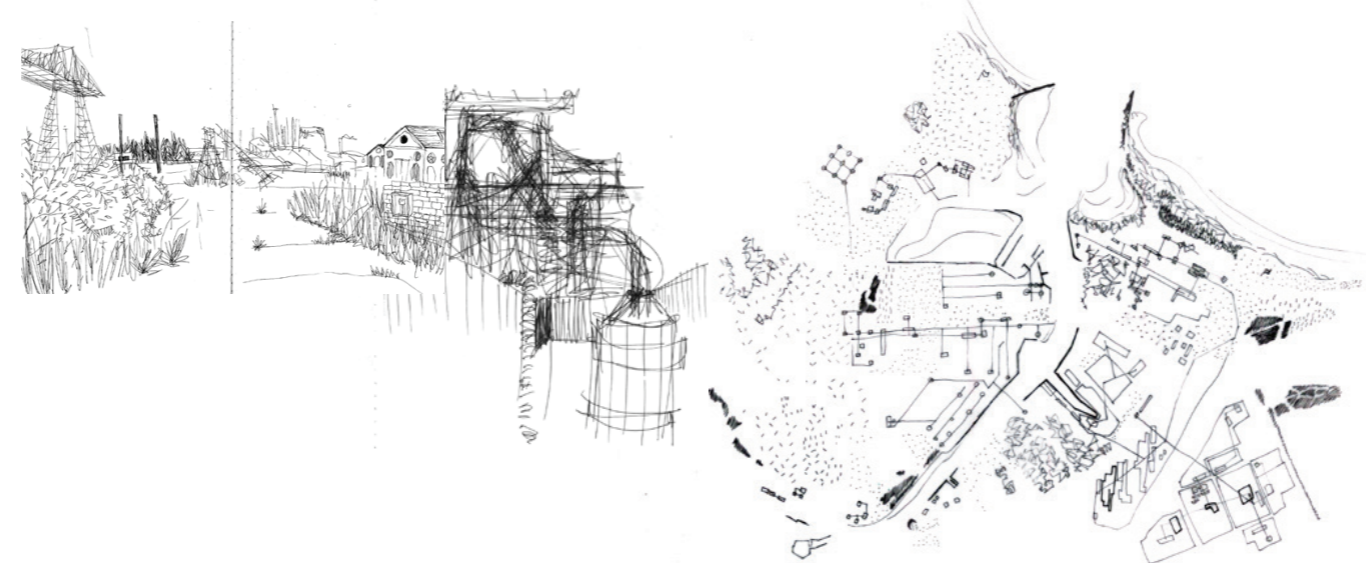


# THE TEES ESTUARY INDUSTRIAL DELTA

Redcar, England  
The Versailles/Marseille landscape architect school (ENSP)  
2017  
The Tees estuary, an industrial delta  
Charlotte Beau Yon de Jonage





# PERFORMATIVE NATURE

Barcelona International Landscape Architecture Biennial

September 2018 **Barcelona**

SCHOOL PRIZE

X International Landscape Architecture Biennial

Máster d'Arquitectura del Paisatge -DUOT - UPC

ETSAB- Escola Tècnica Superior

d'Arquitectura de Barcelona

Avenida Diagonal, 649 piso 5

08028 Barcelona-Spain

## TECHNICAL DOSSIER

The Tees estuary, an industrial delta

Charlotte Beau Yon de Jonage

2017

Tutor, François Xavier Mousquet

Graduate, Charlotte Beau Yon de Jonage

Paysagiste concepteur, diplômé par le gouvernement DPLG, (master degree)

The Versailles/Marseille landscape architect school (ENSP)

The ambition of the project is to affirm the natural dynamics on site, making them the leading tool in the transformation of the Tees Estuary. Acting in the depth of time, from memory to current issues and future expectations. Weaving a new landscape matrix for these deserted spaces, creating bonds between the people who work and inhabit it. Realizing a project for a sustainable future anchored on the present horizon. Manipulating time and landscape processes to give them the forms and scales of a human experience.

The recent rate of change in the Tees Estuary landscape corresponds to the rhythm of the industrial revolutions. Any project on the estuary should take into account the mobility of industrial needs and their impact on the lands they colonize. The recent decommissioning of spaces and the energy transition initiate a new spatial revolution on site. Today, an industrial ecosystem is implanted on site, taking advantage of the strategic dimension of the estuary as a vector. The challenge of the project is to integrate to this powerful system for industry, natural dynamics and the adjacent urban entity. This project wishes to explore the complexity of the territory, and restore the population, and nature as co-habitants of the dynamics in action.

Revealing spaces, engaging dynamics. A landscape project guides the living and models materials in order to create symphonies of life, in accordance with the juxtaposed realities which form our environments.

For further information

**Máster d'Arquitectura del Paisatge -DUOT - UPC**

T: + 34 93 401 64 11 / +34 93 552 0842

Contact via email at: [biennial.paisatge@upc.edu](mailto:biennial.paisatge@upc.edu)

Consult the web page <http://landscape.coac.net/>

T3 / CREATE

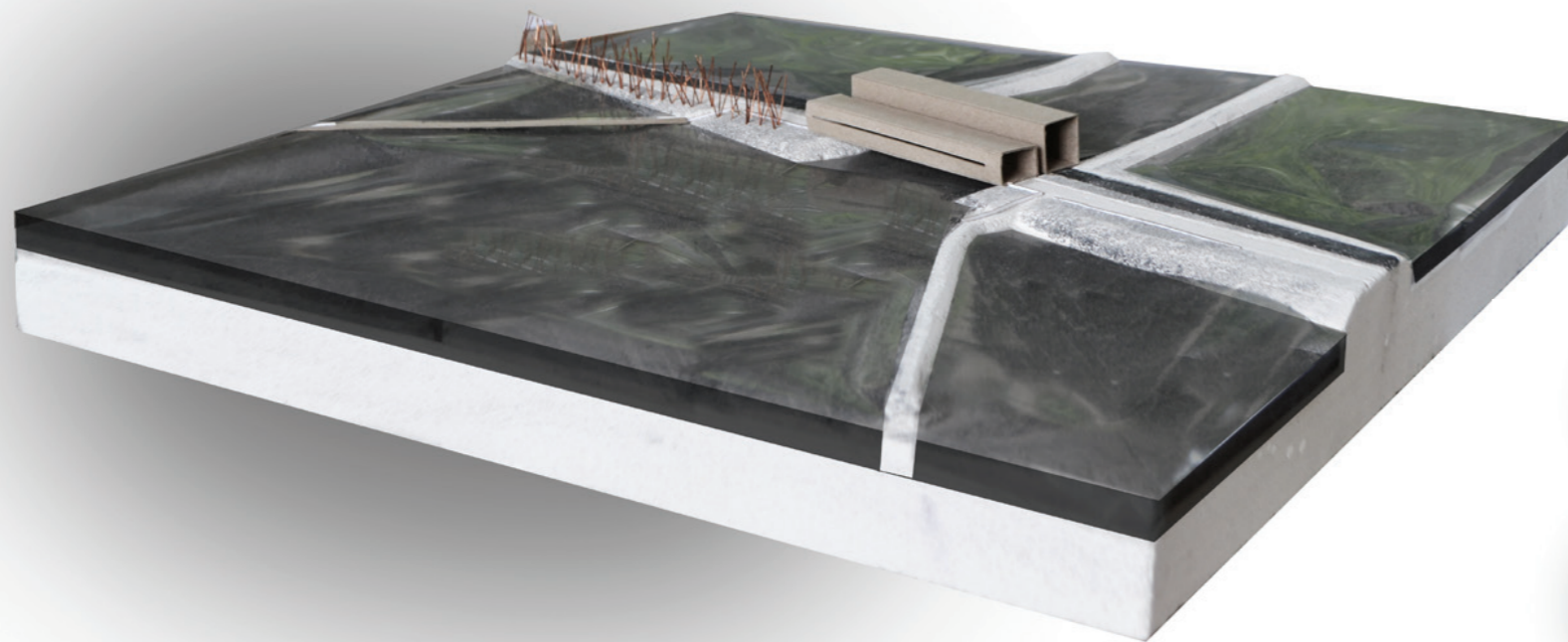


CREATING ENERGY VIA TIDE

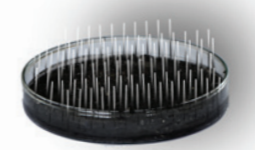


AND RESTORING THE FORESHORE LANDSCAPES OF THE ESTUARY

CREATING OPPORTUNITIES TO DISCOVER THE LANDSCAPE  
LINKING INFRASTRUCTURE AND PROMENADE



LABORATORY OF NATURAL DYNAMICS

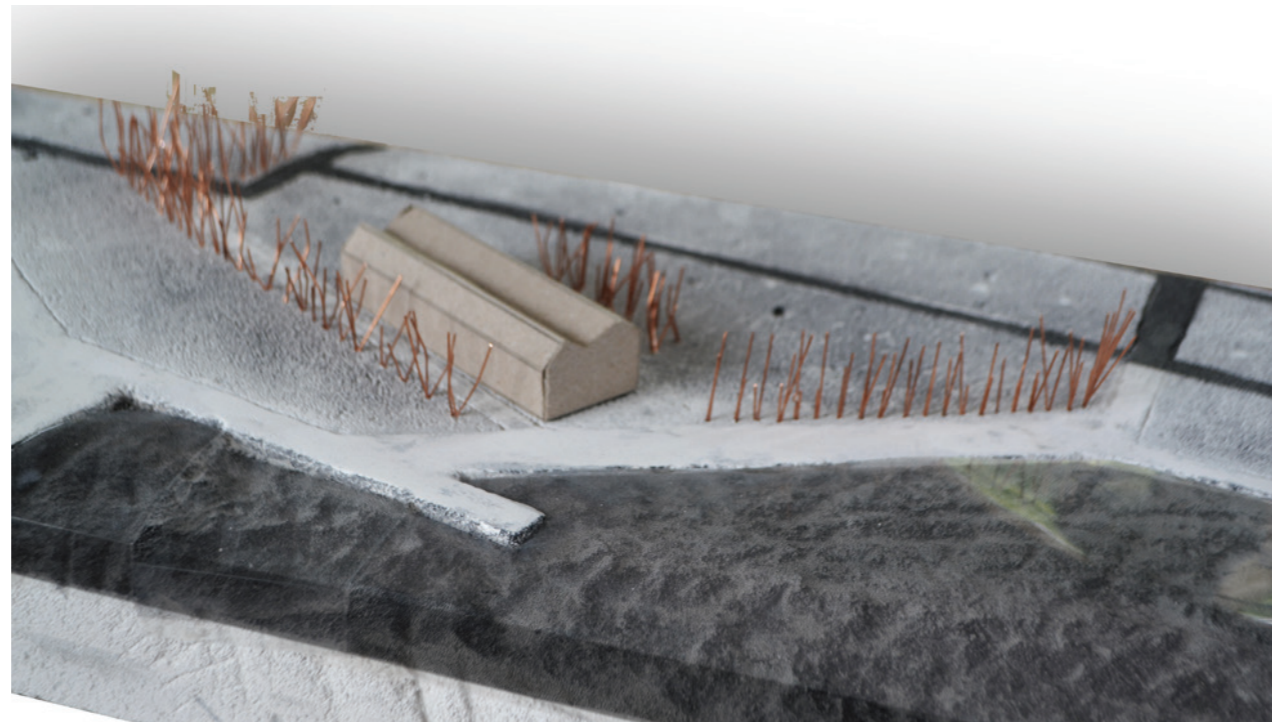
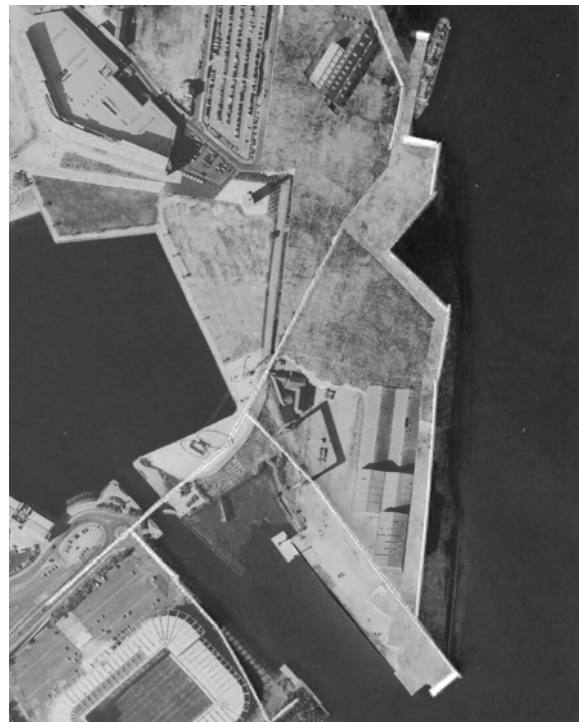


T2 / EMBODY



INHABITING THE EVOLVING

AUGMENTING LANDSCAPES, CHANGING SENSITIVITIES



T1 / DISCOVER



GIVING ACCESS

AND DIRECTIONS TO MANAGE THE HABITATS AND HERITAGE



10