

Cornell University

Country / City USA, ITHACA (NYS)
University / School CORNELL UNIVERSITY
Academic year 2017-2018
Title of the project THE PARADOXICAL VISUALIZATION. A response to industrial waste landscapes
Authors ISABELLA WELCH, FANGGE WANG AND XIANZI LI





PERFORMATIVE NATURE

Barcelona International Landscape Architecture Biennial

September 2018 **Barcelona**

SCHOOL PRIZE

X International Landscape Architecture Biennial

Máster d'Arquitectura del Paisatge -DUOT - UPC

ETSAB- Escola Tècnica Superior

d'Arquitectura de Barcelona

Avenida Diagonal, 649 piso 5

08028 Barcelona-Spain

TECHNICAL DOSSIER

Title of the project THE PARADOXAL VISUALIZATION. A response to industrial waste landscapes
Authors ISABELLA WELCH, FANGGE WANG AND XIANZI LI
Title of the course 6020 Landscape Design Studio
Academic year 2017-2018
Teaching Staff Tim Baird, Professor, Department Chair
Department/Section/Program of belonging
Landscape Architecture Department, College of Agriculture and Life Sciences
University/School Cornell University

Written statement, short description of the project in English, no more than 250 words

The Paradoxical Visualization takes place on a 132-acre site on the Outer Harbor of Buffalo, New York. Historically, the site did not exist; it is largely constructed of contaminated dredged material from the adjacent shipping channel.

The paradox of this project lies between the geometric forms and its naturalization. It can be understood as a highly dynamic interplay axes of visual access, areas of exposure and shelter, and dynamic and static elements.

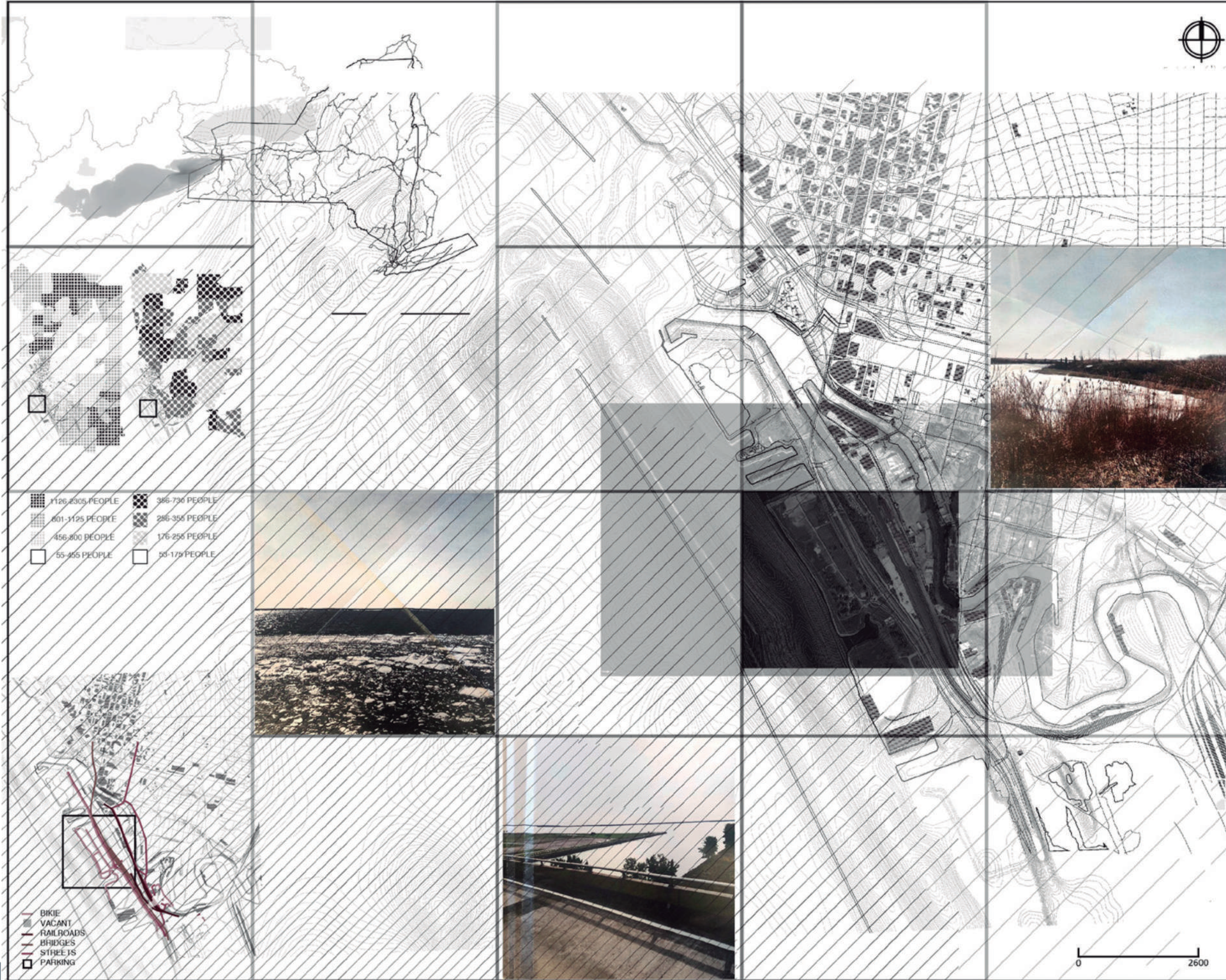
Based on the viewshed projections from the highway and on the site, we used both digital and physical modeling techniques to create landforms that emphasize the viewsheds, which are aligned with nodes such as important buildings, turning points, high points, and critical entrances and exits to the site. The landform is changed to obtain optimal visual connectivity with the traffic and forms interactive moments for people both within and leading to the site.

For further information
Máster d'Arquitectura del Paisatge -DUOT - UPC

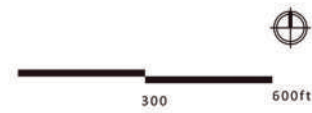
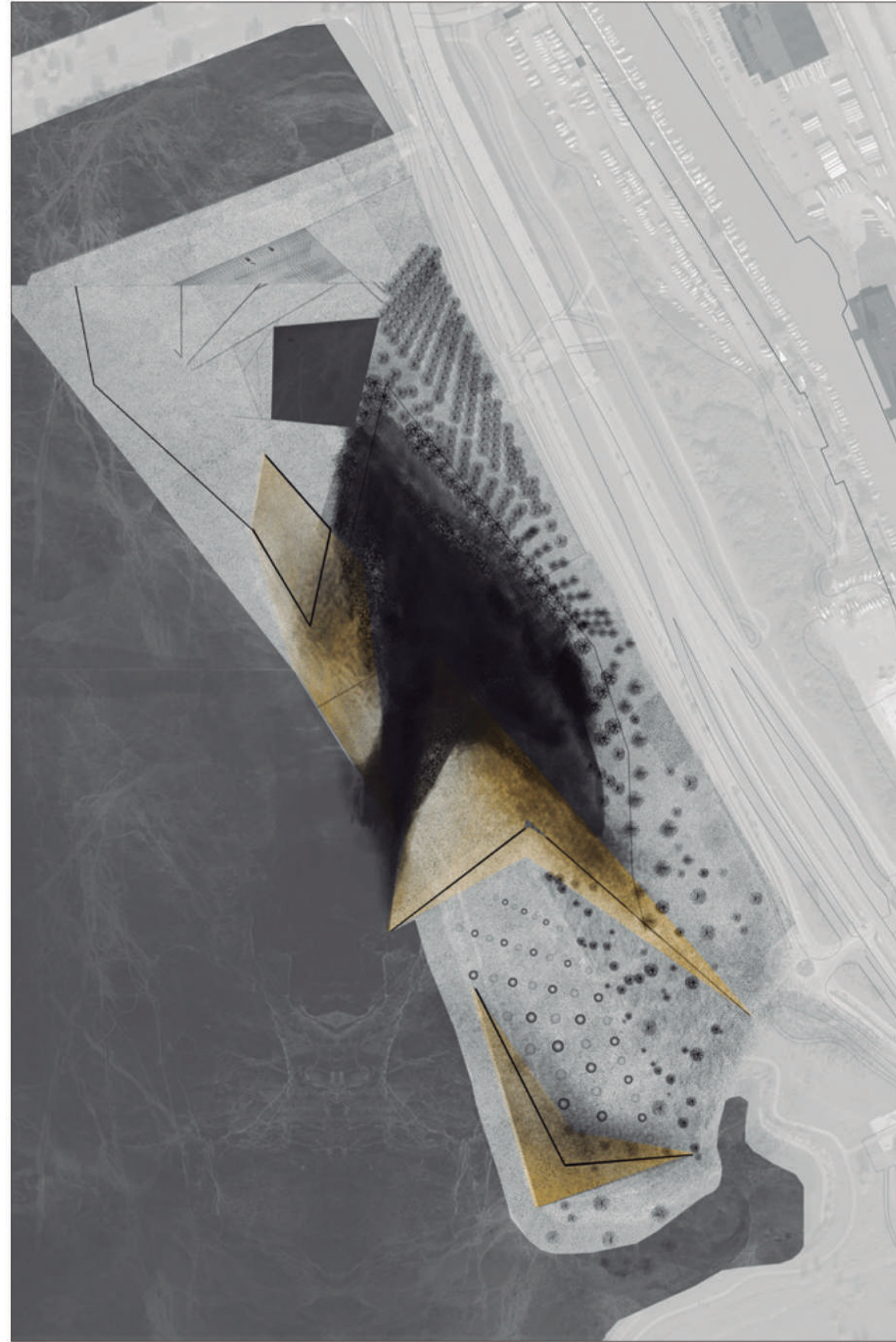
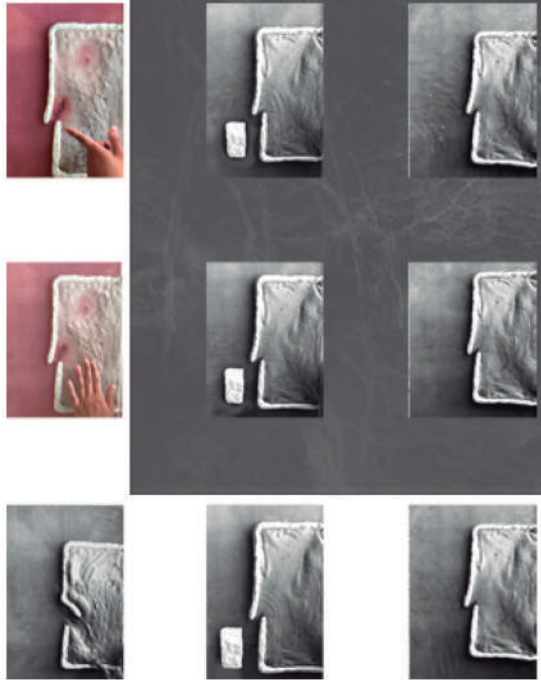
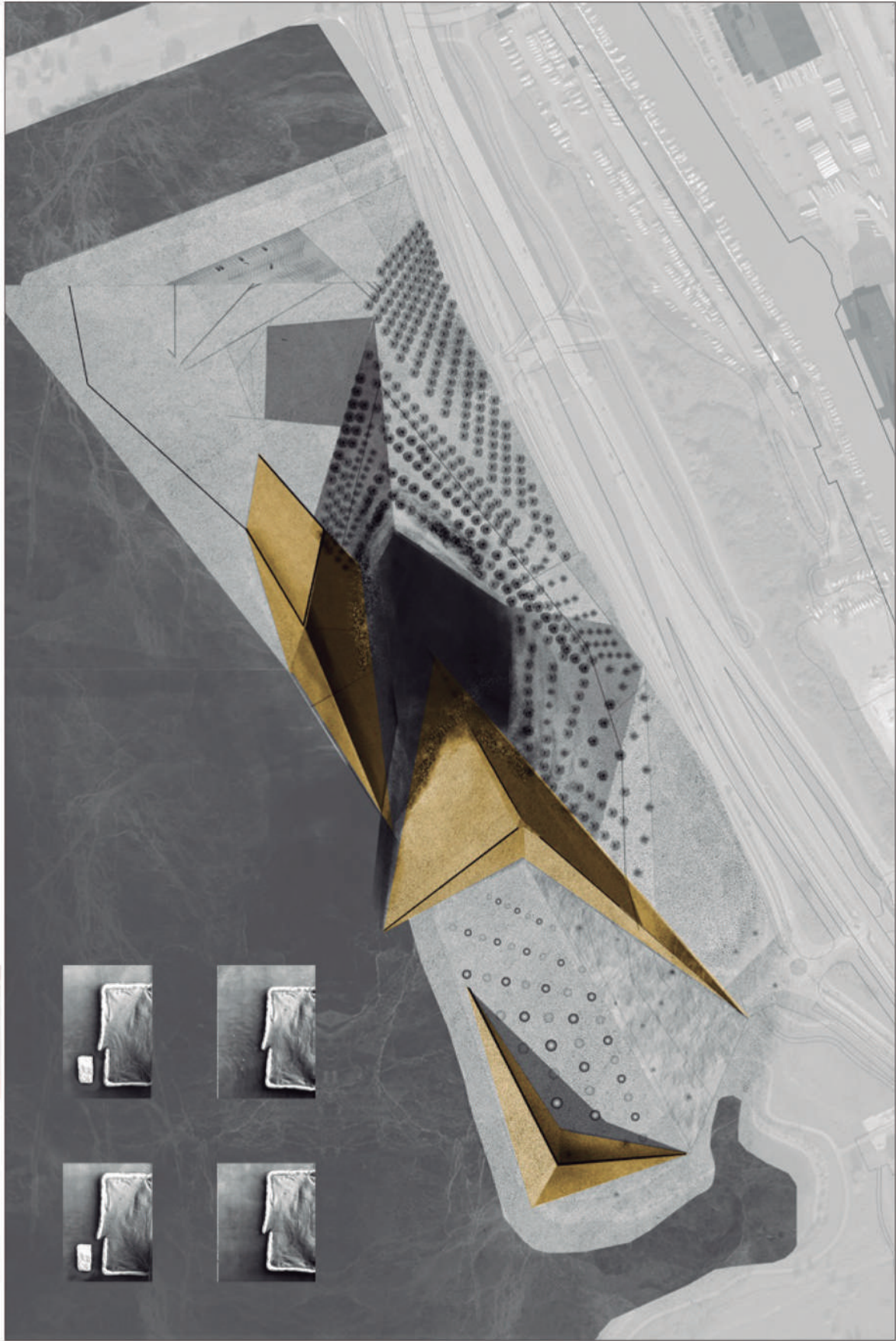
T: + 34 93 401 64 11 / +34 93 552 0842
Contact via email at: biennial.paisatge@upc.edu
Consult the web page <http://landscape.coac.net/>

EXISTING SITE CONDITION ANALYSIS

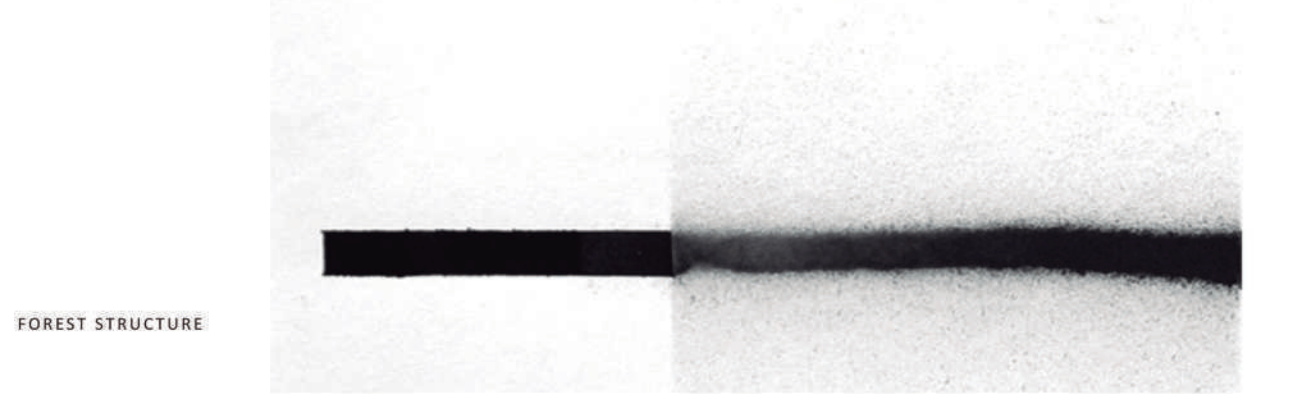
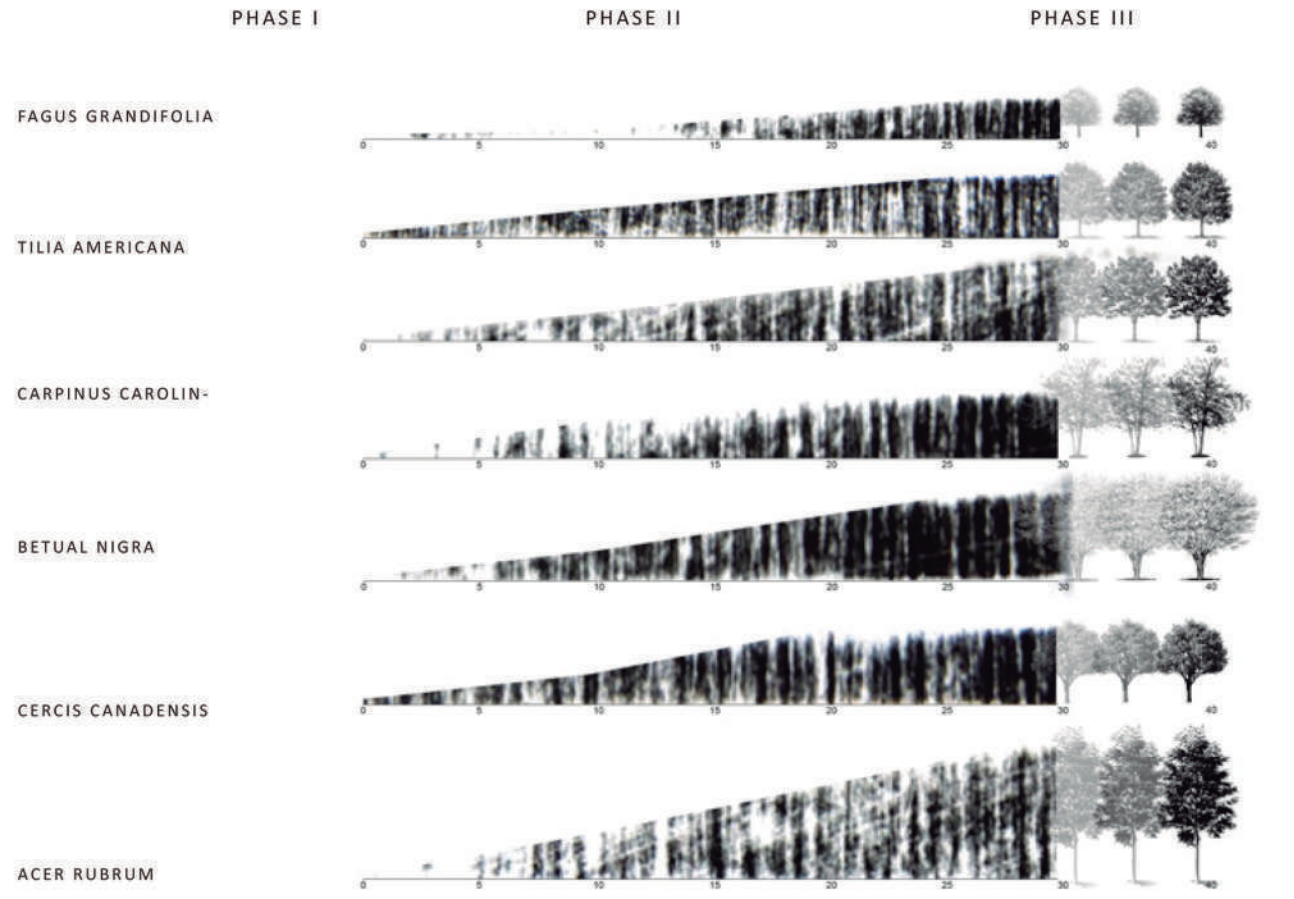
POPULATION | VIEWSHED | OPPORTUNITY



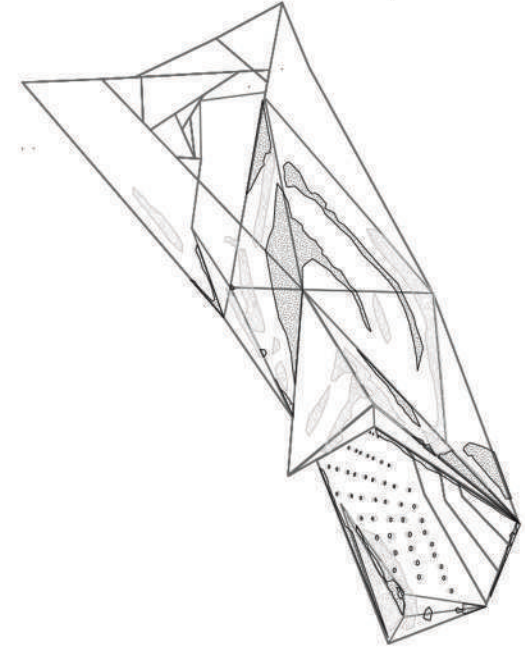
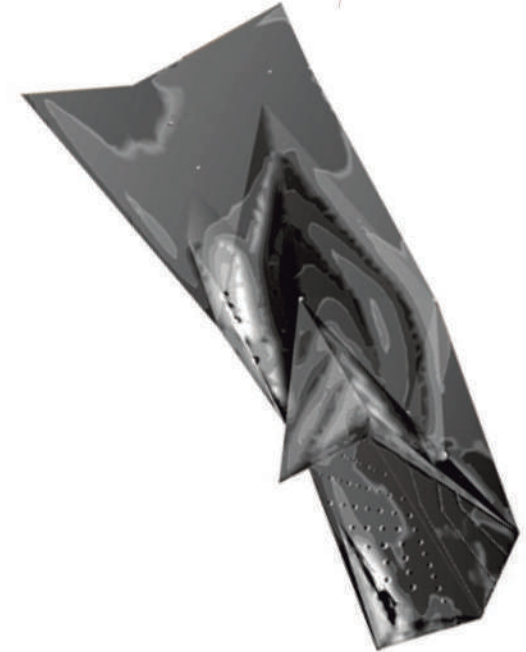
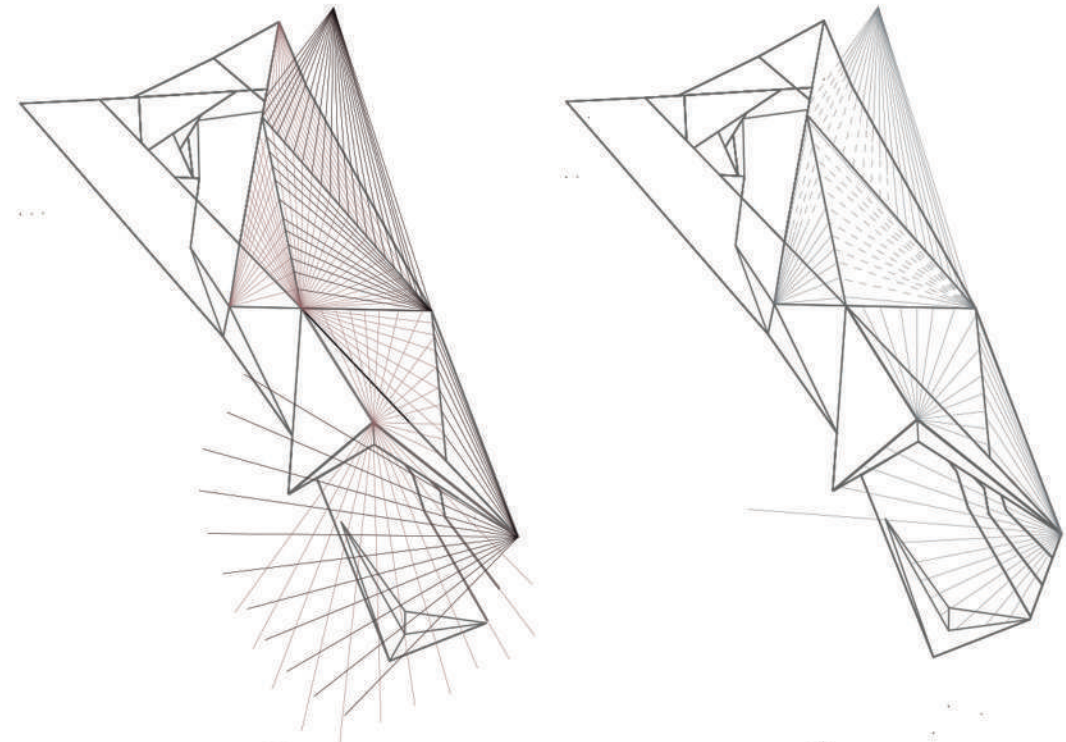
FRAMED VIEWSHED
master plan



OPERATIONAL STRATEGIES II



FOREST STRUCTURE



- Pinus strobus . Acer rubrum . Betula nigra
- Acer rubrum . Tilia americana . Populus deltoides . Betula nigra
- Populus deltoides . Fagus grandifolia . Liriodendron tulipifera
- Cephalanthus occidentalis . Asclepias syriaca . Rubus odoratus
- Cornus alba . Carex pensylvanica . Elymus hystrix . Vaccinium sp.

